

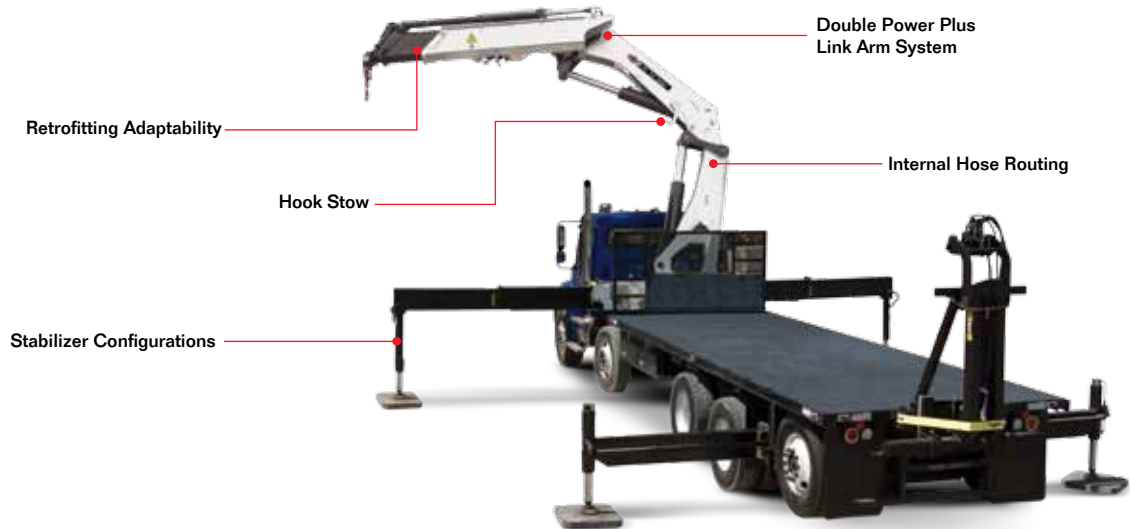
80/565

Articulating Crane



► 80/565 Articulating Crane

Choose IMT® 80/565 articulating cranes for exceptional performance in extreme conditions. With a maximum horizontal boom reach of 67 ft (20.5 m) and a max lifting capacity of 38,185 lb (17,320 kg), 80/565 cranes offer a superior lift-to-weight ratio, long-reach capabilities, and maximum control. Plus, they're available with a variety of options — making them the perfect articulating cranes for a wide a range of heavy-duty applications.



80/565 Specifications

	2 - Hydraulic	3 - Hydraulic	4 - Hydraulic	5 - Hydraulic
Crane Rating*	516,440 ft-lb (71.4 tm)	500,525 ft-lb (69.2 tm)	491,845 ft-lb (68 tm)	486,060 ft-lb (67.2 tm)
Max Horizontal Reach	27' 3" (8.3 m)	33' 9" (10.3 m)	40' 8" (12.4 m)	47' 11" (14.6 m)
Max Vertical Reach	36' 5" (11.1 m)	43' (13.1 m)	49' 6" (15.1 m)	57' 5" (17.5 m)
Max Capacity	35,410 lb (16,060 kg)	34,590 lb (15,690 kg)	34,280 lb (15,550 kg)	33,355 lb (15,130 kg)
Max Cap @ Max Reach	19,380 lb (8790 kg)	14,990 lb (6800 kg)	11,885 lb (5390 kg)	9500 lb (4310 kg)
Crane Weight **	12,345 lb (5600 kg)	13,120 lb (5950 kg)	13,865 lb (6290 kg)	14,540 lb (6595 kg)
Hook Approach				
Vertical	10' 6" (3.2 m)	10' 3" (3.1 m)	10' 3" (3.1 m)	9' 10" (3 m)
Horizontal	2' 11" (0.9 m)	3' 3" (1 m)	3' 3" (1 m)	4' (1.2 m)

Center of Gravity - Stored

Vertical	37.8" (961 mm)	38.3" (972 mm)	38.5" (977 mm)	39" (990 mm)
Horizontal (C/L Rotation to Bridge)	0.7" (18 mm)	1.7" (43 mm)	2.6" (66 mm)	3" (75 mm)

	6 - Hydraulic***	7 - Hydraulic	8 - Hydraulic
Crane Rating*	483,890 ft-lb (66.9 tm)	477,380 ft-lb (66 tm)	471,595 ft-lb (65.2 tm)
Max Horizontal Reach	51' 10" (15.8 m)	59' 5" (18.1 m)	66' 11" (20.4 m)
Max Vertical Reach	64' 8" (19.7 m)	68' 11" (21 m)	76' 9" (23.4 m)
Max Capacity	33,600 lb (15,240 kg)	32,870 lb (14,910 kg)	32,210 lb (14,610 kg)
Max Cap @ Max Reach	8530 lb (3870 kg)	6900 lb (3130 kg)	5645 lb (2560 kg)
Crane Weight **	14,990 lb (6800 kg)	15,565 lb (7060 kg)	16,025 lb (7270 kg)
Hook Approach			
Vertical	9' 6" (2.9 m)	9' 10" (3 m)	9' 6" (2.9 m)
Horizontal	4' 3" (1.3 m)	4' 7" (1.4 m)	4' 11" (1.5 m)

Center of Gravity - Stored

Vertical	38.7" (983 mm)	39.1" (992 mm)	39.3" (1000 mm)
Horizontal (C/L Rotation to Bridge)	3.9" (100 mm)	4.6" (117 mm)	5.1" (130 mm)

* Crane rating (ft-lb) is the rated load (lb) multiplied by the respective distance (ft) from centerline of rotation with all extensions retracted and the inner and outer booms in a horizontal position, per ANSI B30.22. ** Crane weight is for standard crane with tank & 8-bolt long mounting kit. Does not include stabilizers, tank or oil. ***Longer reach version also available.

Standard Features

- Radio remote control
- Double link arm system
- Application-specific product offering
- Superior lift-to-weight ratio
- Long-reach capabilities
- Hexagonal booms for superior reach and maximum control
- Internal hose routing
- 15° overbending on outer boom
- Oil cooler
- Continuous rotation

Options

- Various stabilizer configurations
- Boom mounted winch
- Floodlight on outer boom
- Boom tip functions for hydraulic attachments

Specifications

Stabilizer Pad Diameter	7.9" (200 mm)
Crane Storage Height	8' 2" (2495 mm)
Mounting Space*** (K2 - K5)	4' 8" (1430 mm)
(K6 - K8)	5' 2" (1565 mm)
(K6 with K6 FJ1200)	5' 6" (1680 mm)
Rotational Torque	57,865 ft-lb (8 tm)
Rotation	Continuous
Optimum Pump Performance	Fixed 21 gpm (79.5 L/min) Variable 29 gpm (109.8 L/min)
System Pressure	5075 psi (350 bar)
Oil Reservoir Capacity	Standard 66 gal (250 L) Optional 85 gal (320 L)
Stabilizer Extension Span Standard (hydraulic out/hydraulic down) Weight	27' 7" (8420 mm) 2260 lb (1025 kg)

*** Maximum swing clearance radius required is 3' 4" (1025 mm) at 9' 1" (2765 mm) from top of chassis frame

Minimum Chassis Specifications

Front Axle Rating (GAWR)	20,000 lb (9070 kg)
Rear Axle Rating (GAWR)	46,000 lb (20,865 kg)
Resistance to Bending Moment Minimum	7,740,000 in-lb (891,745 kg-m)

Hexagonal Boom Design

A wide hexagonal profile with large bearing surfaces ensures greater strength and stability for horizontal and vertical spans — even when working in extreme positions with long reaches. Plus, it's protected by powdercoat paint that never fades, flakes, or corrodes.



Internal Hose Routing

Fed internally through protective nylon drag chains or roller guides, all hoses are equipped with sturdy, high-pressure swivel couplings to prevent them from twisting.



Overbending

Overbending between the main boom and jib provides greater flexibility when working under power wires and more potential for high lifting in narrow passages. It also lowers the total height when the loader is stowed over the truck body.

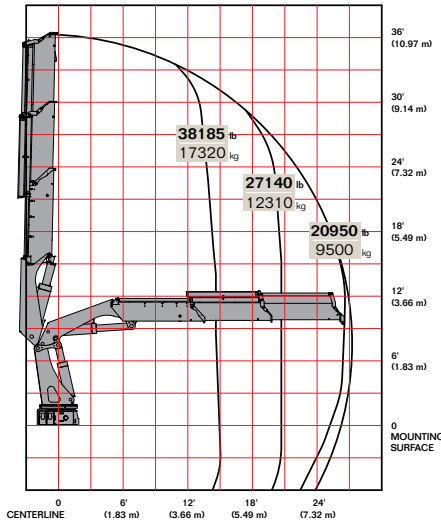


Stow Bracket Innovation

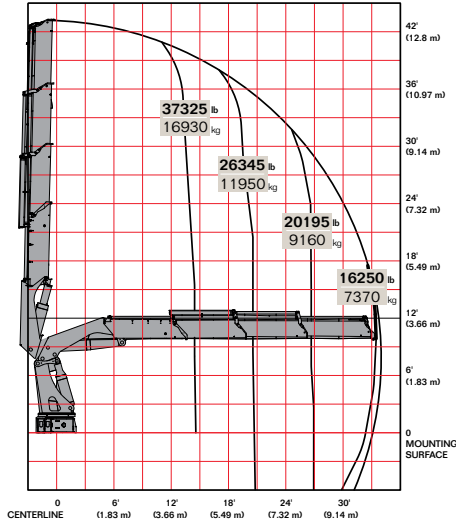
The stow bracket is designed to secure the boom for transport position but not allow for bracket damage. Unlike systems with rigid fixed brackets, the "J" hook will pivot if an incorrect movement is attempted.

▶ 80/565 Capacity Charts

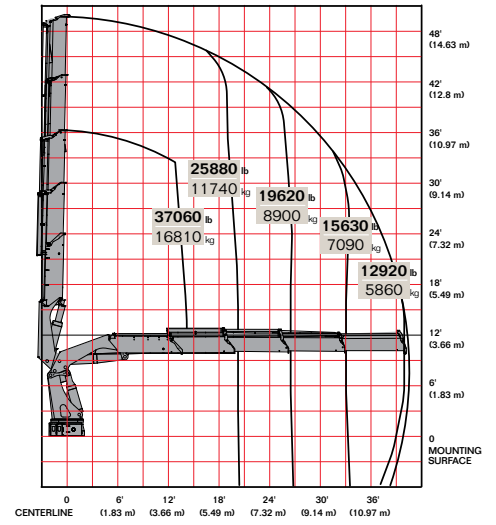
80/565 K2



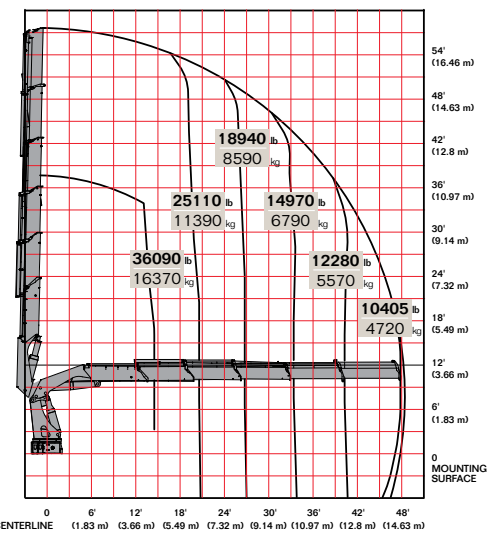
80/565 K3



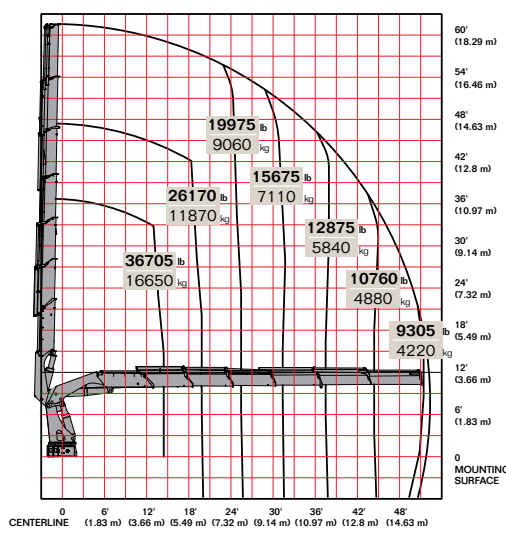
80/565 K4



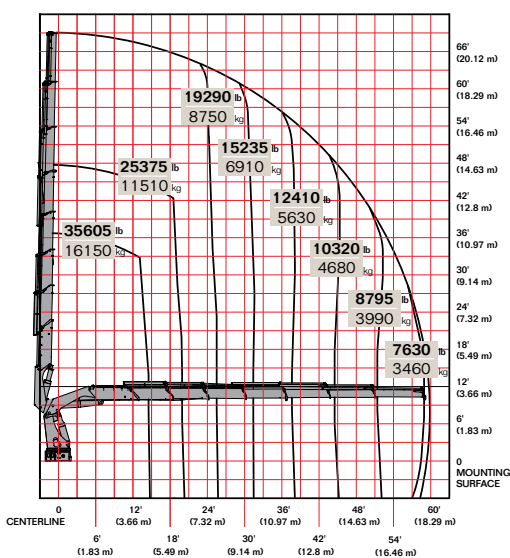
80/565 K5



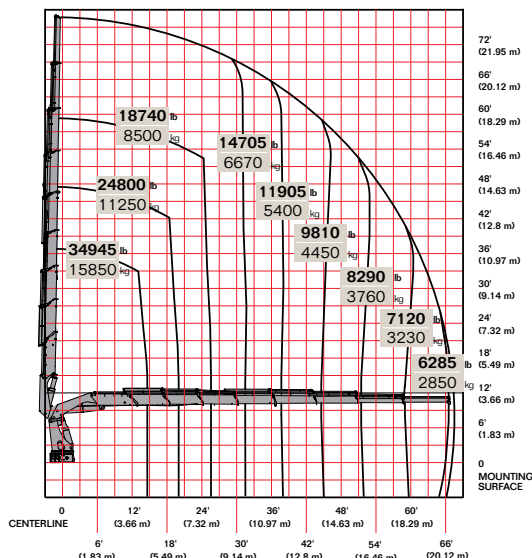
80/565 K6



80/565 K7



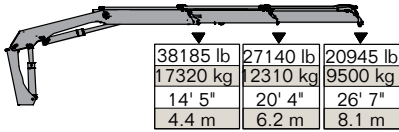
80/565 K8



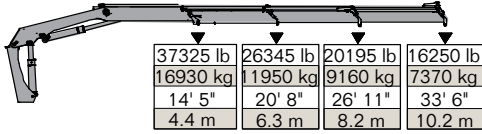
Limit working loads to those shown. Deduct the weight of load-handling devices.

► 80/565 Lifting Capacity

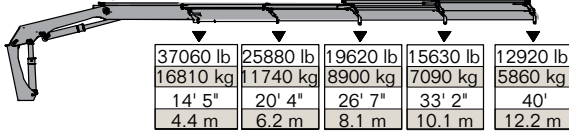
80/565 - 2 Hydraulic



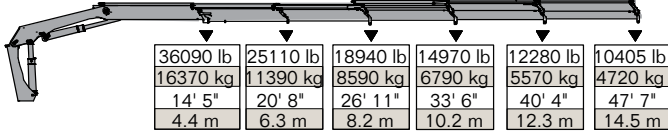
80/565 - 3 Hydraulic



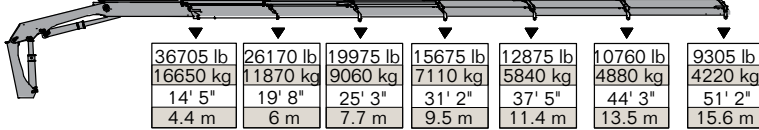
80/565 - 4 Hydraulic



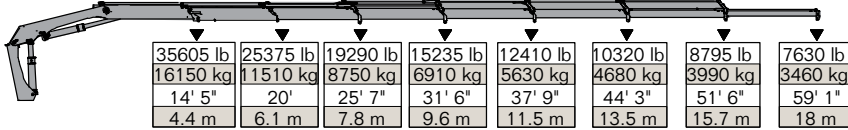
80/565 - 5 Hydraulic



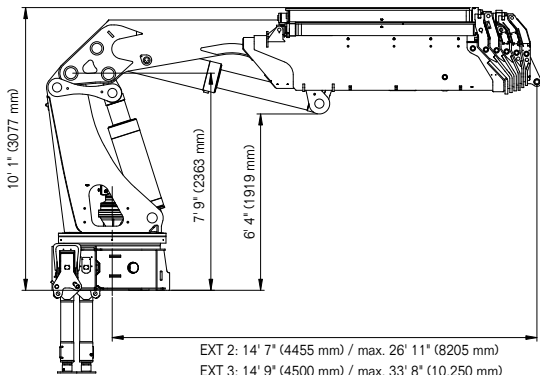
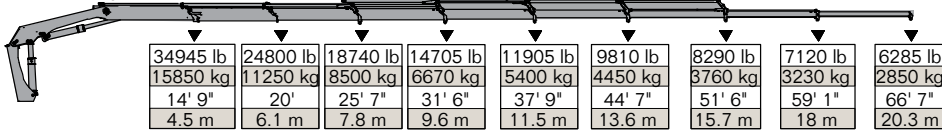
80/565 - 6 Hydraulic



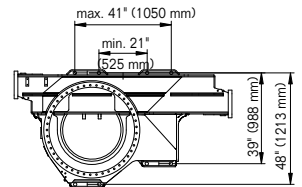
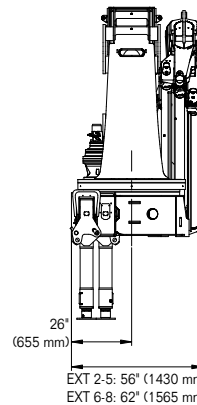
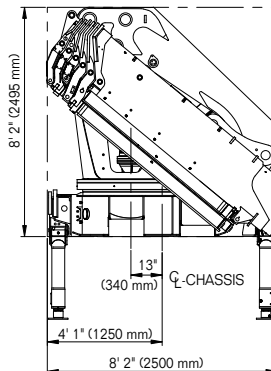
80/565 - 7 Hydraulic



80/565 - 8 Hydraulic



EXT 2: 14' 7" (4455 mm) / max. 26' 11" (8205 mm)
 EXT 3: 14' 9" (4500 mm) / max. 33' 8" (10,250 mm)
 EXT 4: 14' 11" (4555 mm) / max. 40' 8" (12,405 mm)
 EXT 5: 15' 2" (4620 mm) / max. 48' 1" (14,645 mm)
 EXT 6: 15' (4565 mm) / max. 51' 11" (15,815 mm)
 EXT 7: 15' 1" (4605 mm) / max. 59' 7" (18,080 mm)
 EXT 8: 15' (4640 mm) / max. 67' 3" (20,340 mm)



Power Source

- Standard integral-mounted piston hydraulic pump and PTO application

Cylinder Holding Valves

- Integral-mounted counterbalance valves or load-holding check valves
- Prevention of sudden cylinder collapse in case of hose failure

Rotation System

- 360 degree continuous rotation through planetary gear box
- 57,865 ft-lb (8 tm) rotational high-torque hydraulic motor
- Hydraulic brake included

Hydraulic System

- Open-centered system — closed optional
- Regeneration system available on all cylinders to ensure quick deployment
- Hydraulic oil reservoir, air breather, replaceable return-line filter and control valve

Overload System

- Load-limiting capability for boom functions
- Rated capacity limitation (RCL) 5300 blocks load-increasing functions when full capacity is attained



Nothing Says Commitment Like The Diamond.™

IMT has been meeting the needs of our customers for over 50 years and none of it would have been possible without a distributor network that's second to none. IMT distributors offer fast, knowledgeable service and the ability to help customers find the right product for every application. When you're looking for reliable equipment and dependable service, remember IMT.



An Oshkosh Corporation Company

Iowa Mold Tooling Co., Inc.
500 Highway 18 West
Garner, Iowa 50438
800-247-5958 • www.imt.com