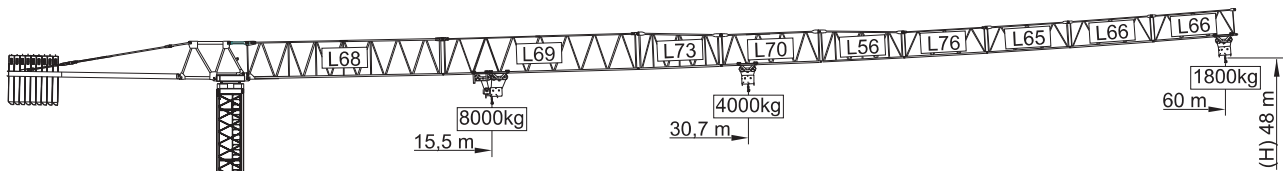
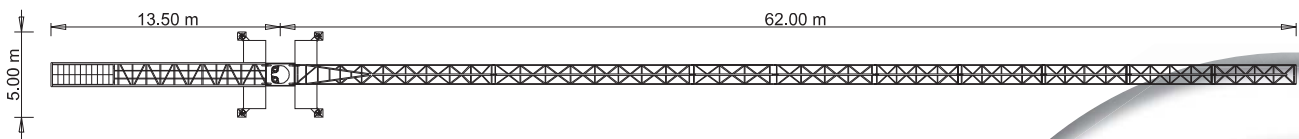
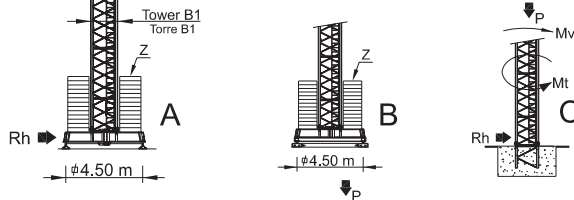


SGT 6018TL



LOADS CARGAS

Counterweight Contrapeso	Jib Length Comprimento da lança	Kg / m		m	18	23	28	33	38	40	45	50	55	60
		8000	4000											
18000kg 8x2000kg+2x1000kg	60 m L68+L69+L73+L70+L56+ L76+L65+L66	15,5 m	30,7 m	4000	4000	4000	3650	3100	2920	2540	2240	1990	1800	
18000kg 8x2000kg+2x1000kg	55 m L68+L69+L73+L70+L56+ L76+L65+L66	17,3 m	34,2 m	4000	4000	4000	4000	3510	3310	2890	2550	2300		
17000kg 8x2000kg+1x1000kg	50 m L68+L69+L73+L70+L56+ L76+L65	18,5 m	36,7 m	4000	4000	4000	4000	3800	3580	3130	2800			
16000kg 8x2000kg	45 m L68+L69+L73+L70+L56+L76	19,2 m	37,6 m	4000	4000	4000	4000	3950	3730	3300	2900			
15000kg 7x2000kg+1x1000kg	40 m L68+L69+L73+L70+L56	19,3 m	37,8 m	4000	4000	4000	4000	3970	3800					
13000kg 6x2000kg+1x1000kg	38 m L68+L73+L70+L56+L76+L65	19,2 m	38 m	4000	4000	4000	4000	4000						
11000kg 5x2000kg+1x1000kg	33 m L68+L73+L70+L56+L76	18,5 m	33 m	4000	4000	4000	4000							
10000kg 5x2000kg	28 m L68+L73+L70+L56	17,3 m	28 m	4000	4000	4000								



REACTIONS REAÇÕES

BALLAST TABLE AND MAXIMUM REACTIONS FOR ALL JIB VERSIONS TABELA DE LASTRO E REAÇÕES MÁXIMAS PARA TODAS AS VERSÕES DE LANÇA						
H m	A / B		C			
	Z kN	P kN	Mv kNm	P kN	Rh kN	Mt kNm
24	600	495	1490	392	30	135
27	700	529	1534	400	34	135
30	700	539	1582	408	38	135
33	700	549	1634	415	42	135
36	700	560	1691	423	45	135
39	800	596	1750	431	49	135
42	800	608	1815	439	53	135
45	900	646	1884	449	57	135
48	1000	685	1957	457	61	135

CHARACTERISTICS CARACTERÍSTICAS

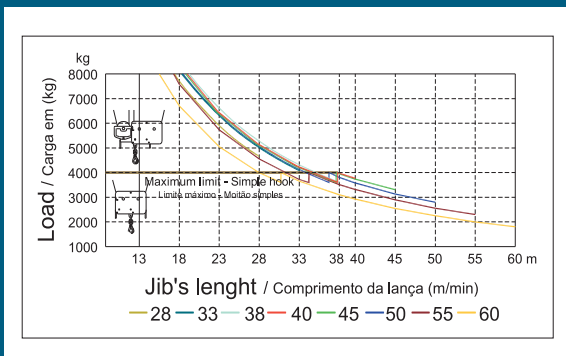
Motions Movimento		Speed Velocidade	Motor's power Pot. dos motores
↑↓ Hoisting Elevação	↑	0 a 85 m/min.	22 kW
	↓	0 a 42,5 m/min.	
○ Slewing Orientação		0 a 1 r.p.m.	3x5 daN.m
↔ Trolleying Distribuição		0 a 60 m/min.	5,5 kW
↔ Travelling Translação	*	0 a 10 m/min.	2x4 kW
⚡ Electric power Tension / Tensão		/ Potência total 400 v ±5% (50 Hz)	40 kVA

* Option / Opção

PARTS ELEMENTOS

		A (mm)	B (mm)	C (mm)	Peso (kg)
Jib section Lana L68		11970	1900	2900	5050
Jib section Lana L69		11960	1160	2260	1650
Jib section Lana L73		5230	1160	2260	750
Jib section Lana L70		6200	1160	1950	680
Jib section Lana L56		5200	1160	1930	590
Jib section Lana L76		5180	1160	1610	370
Jib section Lana L65		5110	1160	1610	330
Jib section Lana L66		5110	1160	1610	300
Tower section 12m Tramo torre 12m B1		12000	1620	1620	3450
Tower section 6m Tramo torre 6m B1		6130	1620	1620	1800
Tower section 3m Tramo torre 3m B1		3195	1620	1620	980
Telescopic section Tramo telescopagem B1		3195	1830	1830	920
Head section Cabecote		2620	2180	2150	4860
Pyramid Piramide		3860	1220	2280	1840
Counter-jib Contra-lana		10550	1500	500	4000
Cross shaped base Chassis B1		6620	500	1040	1850
Cross shaped base Chassis B1		3210	340	1040	950
Ballast Contra-peso		1160	165	2950	1000
Ballast Contra-peso		1160	330	2950	2000
Foundation tower Tramo de encastrar B1		1775	1600	1600	650

LOAD DIAGRAM DIAGRAMA DE CARGAS



SPEED DIAGRAM DIAGRAMA DE VELOCIDADE

