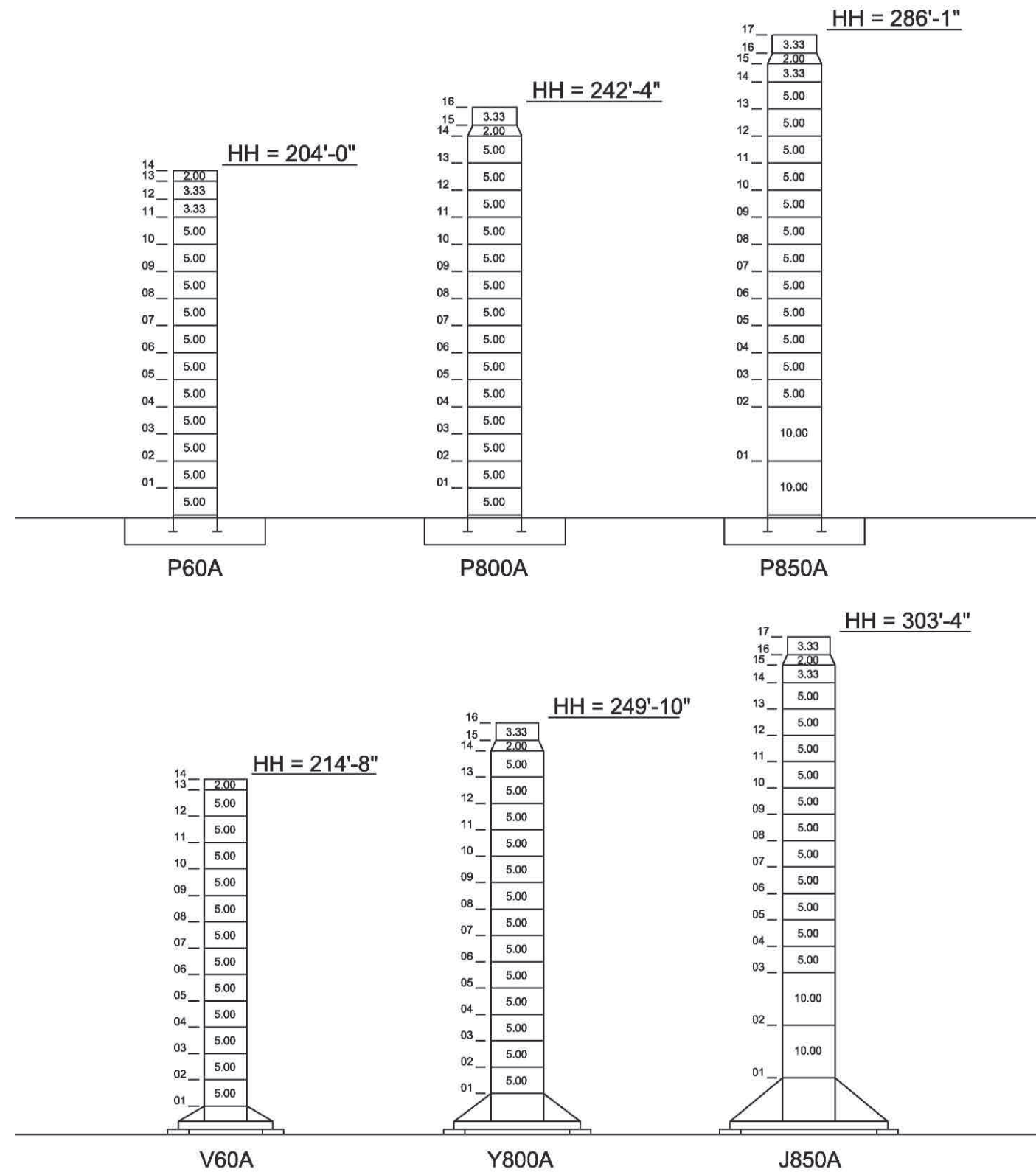


Maximum Free-Standing Hook Heights

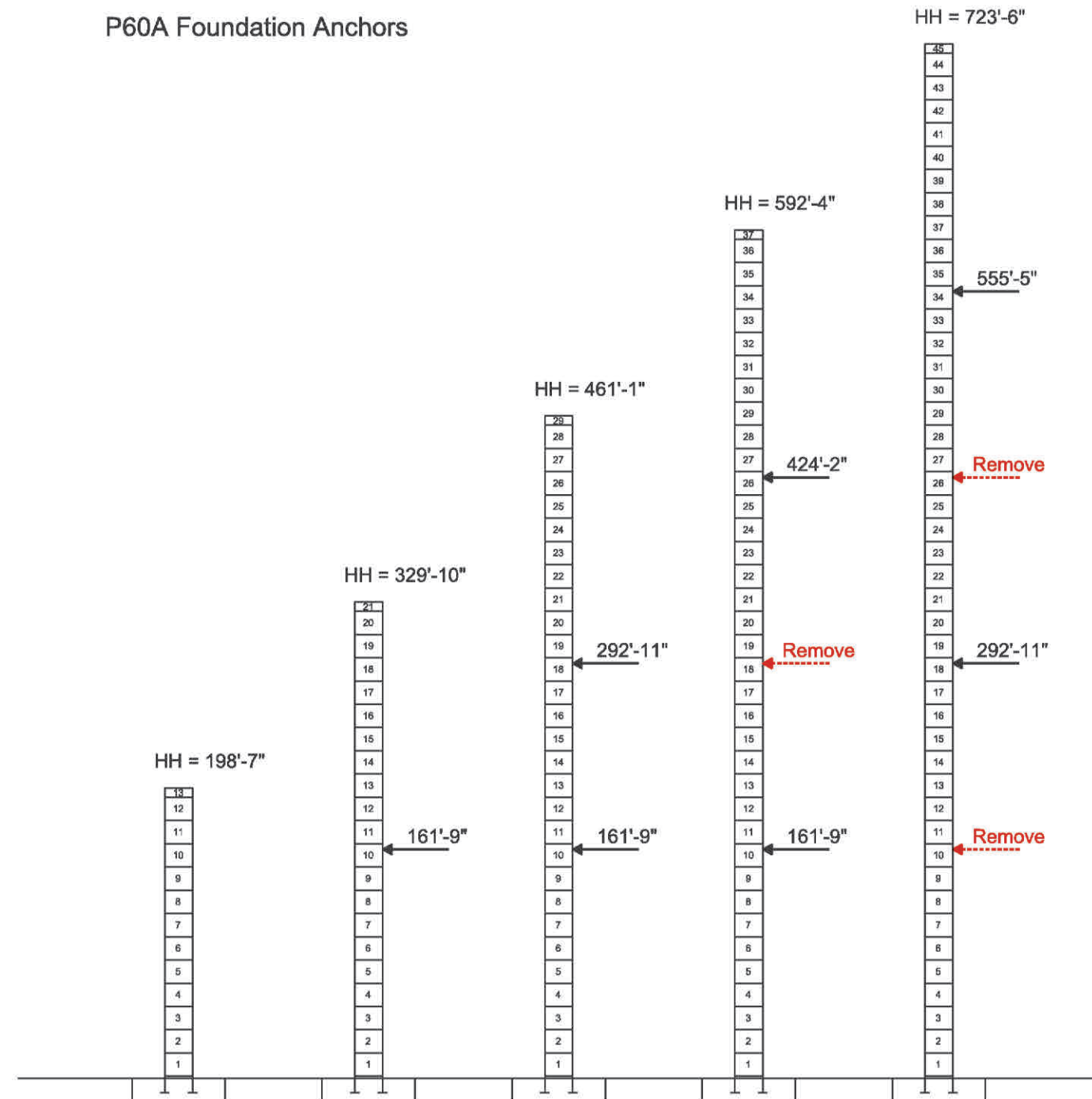
External Climbing

Rated Load Chart



Jib Configurations: L40 thru L75 (131'-3" thru 246'-1")

P60A Foundation Anchors



Hook Radius	Capacity (lbs)							
	Jib Lengths							
	246'-1"	229'-8"	213'-3"	196'-10"	180'-5"	164'-1"	147'-8"	131'-3"
20'-0"	35,274	35,274	35,274	35,274	35,274	35,274	35,274	35,274
30'-0"	35,274	35,274	35,274	35,274	35,274	35,274	35,274	35,274
40'-0"	35,274	35,274	35,274	35,274	35,274	35,274	35,274	35,274
50'-0"	34,364	35,274	35,274	35,274	35,274	35,274	35,274	35,274
60'-0"	27,829	31,983	33,594	35,274	35,274	35,274	35,274	35,274
70'-0"	23,267	26,794	28,162	29,627	31,024	32,191	33,441	34,024
80'-0"	19,903	22,967	24,155	25,428	26,642	27,655	28,742	29,248
90'-0"	17,318	20,027	21,078	22,203	23,276	24,172	25,132	25,580
100'-0"	15,271	17,699	18,640	19,648	20,610	21,412	22,273	22,674
110'-0"	13,609	15,808	16,661	17,574	18,445	19,173	19,952	20,315
120'-0"	12,234	14,243	15,023	15,857	16,654	17,318	18,031	18,363
130'-0"	11,076	12,926	13,644	14,412	15,146	15,758	16,414	16,719
131'-3"	10,946	12,778	13,489	14,250	14,976	15,582	16,232	16,534
140'-0"	10,088	11,803	12,468	13,180	13,859	14,426	15,034	
147'-8"	9,426	11,050	11,679	12,354	12,997	13,534	14,109	
150'-0"	9,235	10,833	11,452	12,116	12,748	13,277		
160'-0"	8,492	9,987	10,567	11,188	11,780	12,274		
164'-1"	8,217	9,675	10,240	10,845	11,423	11,905		
170'-0"	7,838	9,243	9,788	10,371	10,928			
180'-0"	7,258	8,583	9,097	9,648	10,173			
180'-5"	7,233	8,556	9,068	9,617	10,141			
190'-0"	6,740	7,995	8,481	9,002				
196'-10"	6,417	7,626	8,096	8,598				
200'-0"	6,275	7,486	7,927					
210'-0"	5,856	6,988	7,428					
213'-3"	5,728	6,843	7,275					
220'-0"	5,475	6,555						
229'-8"	5,139	6,173						
230'-0"	5,127							
240'-0"	4,810							
246'-1"	4,630							

Max. Load Radius								
From	9'-6"	9'-6"	9'-6"	9'-6"	9'-6"	9'-6"	9'-6"	9'-6"
To	48'-11"	55'-1"	57'-6"	60'-1"	62'-6"	64'-7"	66'-9"	67'-10"

- Notes:
- The above load chart was calculated using the SM-DM trolley system.
 - Values above the red line can be achieved with 4-part line configuration only.

Mechanical Data

Function	Hoist Type	Speed vs Weight	2-part (lifting)						4-part (lifting)						Motor (hp)	Motor (kW)	Rope Length (ft)
			1st Gear	2nd Gear	3rd Gear	4th Gear	5th Gear	6th Gear	1st Gear	2nd Gear	3rd Gear	4th Gear	5th Gear	6th Gear			
Hoist	75 LVF 40 Optima	ft/min lbs	9 17,637	37 17,637	112 17,637	145 13,228	201 8,818	296 4,409	5 35,274	19 35,274	56 35,274	73 26,455	102 17,637	148 8,818	75	55	2,001
	108 LBR 40	ft/min lbs	125 17,637	198 12,128	318 7,607	505 4,410			63 35,274	100 24,255	159 15,215	253 8,820			108	79	2,854
Trolley	6 DVF 4	ft/min	138 (35,274 lbs) / 276 (17,637 lbs) / 329 (8,818 lbs)												5.5	4.0	
	DV - 9.0	ft/min													12	9.0	
Swing	RVF 163 Optima +	rpm	0.70												3 x 7.5	3 x 5.5	
	R - 13	rpm	0.76												Jibs L40 - L50 2 x 7.1	Jibs L55 - L75 3 x 5.3	

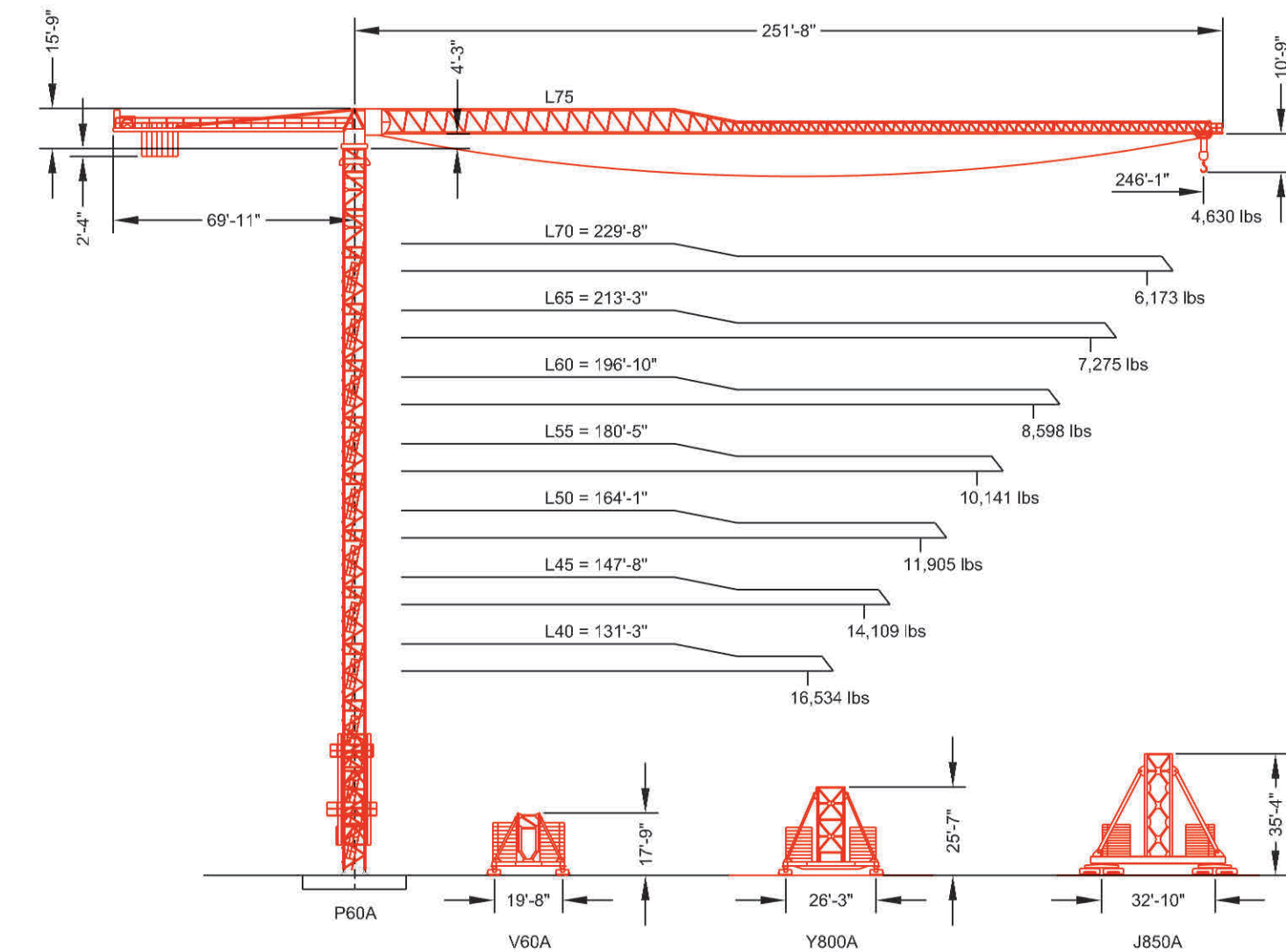
Power Requirements: 480 V (+6% or -10%) 60 Hz measured at turn table.
 Amperage: 75 LVF 40: 127 Amp (3 phase service with ground)
 Amperage: 108 LBR 40: 167 Amp (3 phase service with ground)

- Notes:
 1. Hoist speeds with "Optima" hoist units are 25% faster than the speeds listed above when lowering the hook.
 2. Values given under "Rope Length" are for drum spooling capacity only.



MDT302-L16

Maximum Capacity = 35,274 lbs



Constant improvement and engineering progress make it necessary that we reserve the right to make specification, equipment, and price changes without notice. Illustrations shown may include optional equipment and accessories, and may not include all standard equipment. Product brochures are for illustration purposes only. Contact the manufacturer or consult the operation manual for specific details concerning this product.

Shady Grove, Pennsylvania Facility
 1565 Buchanan Trail East
 Shady Grove, PA 17256-0021, USA
 Tel: [Int + 001] 717 597 8121
 Fax: [Int + 001] 717 597 4062

Note: Tip capacities are dependent on certain trolley types.

F.E.M. 1.001

MDT302-L16



MDT302-L16



Form No. MDT302-L16 Part No. 05-005 .5M-0508



www.manitowoc.com

