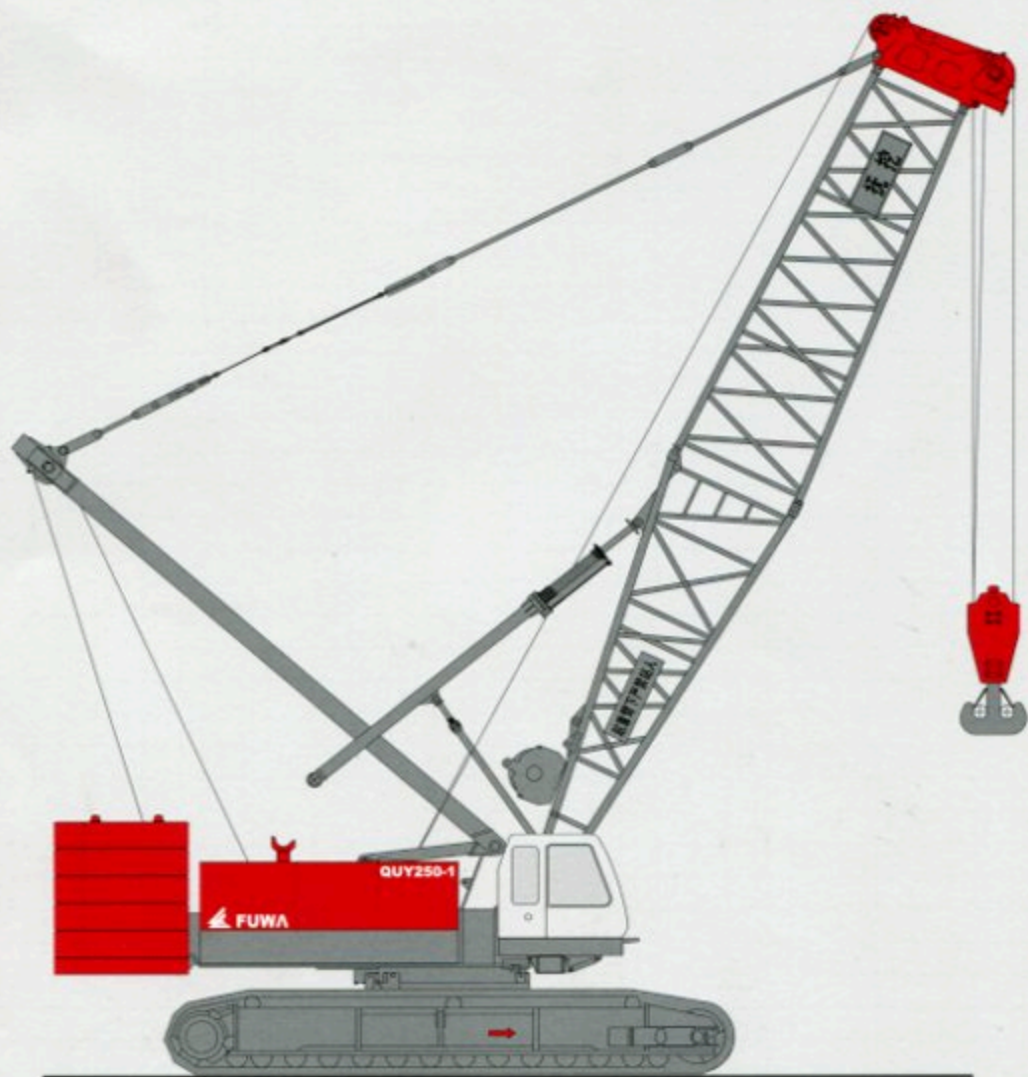


液压式履带起重机

HYDRAULIC CRAWLER CRANE

QUY250-1



目录 Content

安全装置	Safety device	01-02 >>
详细说明	Specifications	03-04 >>
臂杆组合	Boom combination	05-06 >>
主要技术参数	Technical data	07 >>
总体尺寸	Overall dimension	07-09 >>
主臂和副臂结合	Boom and jib combination	10-13 >>
重主臂工况额定起重能力表	Rated lifting capacity load chart (Heavy boom duty)	14 >>
重主臂工况作业范围	Working range (heavy boom duty)	15 >>
辅助臂工况额定起重能力表	Rated lifting capacity load chart (runner duty)	16 >>
带辅助臂时主臂工况额定起重能力表	Rated lifting capacity load chart (boom duty with runner)	17-18 >>
辅助臂工况作业范围	Working range (runner duty)	19 >>
重型加长主臂工况额定起重能力表	Rated lifting capacity load chart (heavy lengthening boom duty)	20 >>
重型加长主臂工况作业范围	Working range (heavy lengthening boom duty)	21 >>
轻重混合主臂工况额定起重能力表	Rated lifting capacity load chart (heavy-light boom combination duty)	22 >>
轻重混合主臂工况作业范围	Working range (heavy-light boom combination duty)	23 >>
固定副臂工况额定起重能力表	Rated lifting capacity load chart (fixed jib duty)	24-28 >>
带固定副臂时主臂工况额定起重能力表	Rated lifting capacity load chart (fixed jib duty)	29-32 >>
固定副臂工况作业范围	Working range (fixed jib duty)	33 >>
塔式工况额定起重能力表	Rated lifting capacity load chart (luffing jib duty)	34-42 >>
额定起重能力表说明	Note for rated lifting capacity load chart	43 >>
塔式工况作业范围	Working range (luffing jib duty)	44 >>
主要零部件运输尺寸	Dimensions of main components for transport	45-49 >>



安全装置

吊钩过卷装置

吊钩和臂架防过卷装置是用于防止因过卷导致的机器损坏或后翻事故。当起重钩提升到一定高度时，将重锤托起，则微动开关由弹簧复位，开关触点断开，控制继电器动作使蜂鸣器报警，报警指示灯闪亮，同时，控制器锁定起重钩的提升，起重钩提升动作自动停止。

臂架防倾装置

臂上限角度由力矩限制器和主臂上位开关检测控制。

a. 起重工况时

当主臂 \geq 上位角度 80° 时，力矩限制器声光连续报警，并输出信号，主臂停止升臂。同时，主臂上位开关动作，主臂上位开关回路被切断，主臂停止升臂。

b. 塔式工况时

当塔式主臂 \geq 上位角度 85° 时，力矩限制器声光连续报警，并输出信号，塔式主臂停止升臂。同时，塔式主臂上位开关动作，塔式主臂上位开关回路被切断。塔式主臂停止升臂。当塔臂 \geq 上位角度 70° 时，力矩限制器声光连续报警，并输出信号，塔臂停止升臂。同时，塔臂上位开关动作，塔臂上位开关回路被切断，塔臂停止升臂。

力矩限制器

限制器对起重机作业进行实时监控，在各种工况下，通过按键设置工况参数。

当额定起重力矩的 $0\% \leq$ 起重力矩 $<$ 额定起重力矩的 90% 时，力矩限制器显示屏上，力矩百分比条形码绿色点亮，限制器无声音报警。

当额定起重力矩的 $90\% \leq$ 起重力矩 $<$ 额定起重力矩的 100% 时，力矩限制器显示屏上，力矩百分比条形码黄色预警，同时限制器发出声音断续报警。

当额定起重力矩的 $100\% \leq$ 起重力矩 $<$ 额定起重力矩的 105% 时，力矩限制器显示屏上，力矩百分比条形码红色报警，同时限制器发出声音连续报警。

当起重力矩 \geq 额定起重力矩的 105% 时，力矩限制器显示屏上，力矩百分比条形码红色报警，限制器发出声音连续报警，同时输出信号。主、副钩停止提升，臂停止增幅动作。

制动器及其锁定装置

制动器 本起重机设有主、副卷筒制动器，主、副变幅卷筒制动器，回转制动器。

锁定装置 本起重机设有主、副卷筒棘爪锁定装置、主变幅卷筒棘爪锁定装置、回转锁定装置。

风速仪

臂架顶部的风速传感器装置用于检测风速，力矩限制器显示风速。

水平仪

该装置用于检测机体与水平地面的角度，用来保证机器工作地面符合要求。

角度盘

主臂架根处设有机械式角度盘，用来显示臂架当前角度。

卷筒过放保护(三圈半保护)

主卷、副卷筒分别安装有三圈半保护装置，用来避免卷筒放绳时产生过放现象。

油缸伸缩带弹簧防倾杆

主要用于防倾杆碰撞。

防倾杆限位保护

设有防倾杆限位开关。

行走报警

行走时，机器发出蜂鸣器报警。

回转报警

回转时，机器发出蜂鸣器报警。

吊钩防脱绳装置

防止吊重钢绳从吊钩中脱落。

臂架变幅接近极限位置减速控制

臂架变幅接近极限位置时进行减速控制，从而使臂架避免突然急停，造成大的冲击。

扬声器(司机用)

司机和作业指挥者相互提示、同时也提醒周围作业者。

显示屏显示柴油机的各种参数

1. 柴油机工作累记小时
2. 风速
3. 柴油机转速
4. 机油油温
6. 机油压力
7. 冷却水温
8. 燃油液位
9. 水平倾角
10. 液压油温

卷扬监视器

时时掌握主、副卷筒及变幅卷筒钢丝绳运行状态。

后视镜

司机室的前右侧装有反射镜，观察机器后面是否存在障碍物及安全隐患。

雨刷器

用于清除司机室前窗的雨滴、尘埃，以保证操作者具有良好的视野。

高空太阳能警示灯

该灯为航空警示灯，太阳能式无须其它能源。

负载率指示灯

为了便于现场人员了解机械载荷情况，采用了与交通信号相同的3色负载率指示灯。

Safety Device

Hook overwinch device	Hook and boom over-hoist prevention devices are used for preventing the crane from the accidents because of over-hoist. When the hook lifts up to certain height and touches the plumb, the limit switch shall be disengaged by the reposition spring, and then the switch cuts off the control circuit. The control relay makes the buzzer alarm and the indicator lights up. At the same time, the rise of the hook will stop automatically.
Boom backstop device	The boom upper limit angle is controlled by moment limiter and boom upper limit switch. a. Working condition with boom When the boom upper limit angle is more than 80° , the moment limiter will continuously alarm and send out the signal. The rise of boom will stop. At the same time, the limit switch is cut off. The boom stops rising. b. Working condition with luffing jib When luffing boom upper limit angle is more than 85° , the moment limiter will continuously alarm and send out the signal of danger. The rise of luffing boom will stop. At the same time, the limit switch is cut off. The luffing boom stops rising. When luffing jib upper limit angle is more than 70° , the moment limiter will alarm continuously and send out the signal of danger. The rise of the luffing jib stops. At the same time, the limit switch on the luffing jib is cut off. The luffing jib stops rising.
Moment limiter	The device monitors the work of the crane. You can press the key to set the values of all working conditions. When the actual load is less than 90% of rated load, the screen shows load proportional bar in green color, and no warning alarm from the Safe Load Indicator. When the actual load exceeds 90% of rated load while is less than 100% of rated load, the screen shows yellow color and an intermittent warning alarm sounds. When the actual load exceeds 100% of rated load while less than 105% of rated load, the monitor screen shows red color and the Safe Load Indicator gives continuous warning alarm, and output control signal. When the actual load exceeds 105% of rated load, the monitor screen shows red color and gives out a continuous warning alarm, at the same time the Safe Load Indicator put out control signal (CANOPEN2.0B) to stop the hoisting action of main and auxiliary hooks and boom.
Brake and locking device	Brakes: main and auxiliary winch brakes, main and auxiliary derricking drum brakes and slew brake. Locking devices: main and auxiliary winch pawls, main derricking drum pawls and slew locking device.
Anemometer	Anemometer- the wind speed sensor is installed on the top of boom to test the wind speed. The moment limiter displays wind speed.
Level gauge	The device is used for testing the angle between the machine and the ground.
Angle Scale	The angle scale on the boom foot shows the current angle of the boom.
Rope retainer (three and a half circles retained on the drum)	This device is installed on the main and auxiliary hoisting winches to ensure at least three and a half circles of wire ropes be kept on the winch to guarantee safe operation of the machine.
Telescopic cylinder with spring backstop	To mainly use for backstop collision
Backstop limit protection	Backstop limit switch attached
Traveling alarm	Buzzer alarms when when traveling
Slewing alarm	Buzzer alarms when slewing
Hook anti-off rope device	To prevent wire rope from disengaging from hook
Boom derricking slowdown control approaching high-point position	Carry through slowdown control when boom derricking approaches to high-point position, which avoid tremendous impact and make boom have an abrupt emergency stop.
Loudspeaker (driver use)	Clue-on should be done for driver and operator including the people nearby as well.
Display various parameter on diesel engine	1.Diesel engine working cumulation hours 2.Windspeed 3.Diesel engine rev 4.Engine oil temperature 5.Engine oil pressure 6.Cooling water temperature 7.Fuel liquid level 8.Horizontal obliquity 9.Hydraulic oil temperature
Winch monitor	To monitor and master main/aux.drums and derricking drum wire rope
Rearview mirror	Reflector is installed at front-right side of cab to view obstacle or unsafe hidden trouble at the back of crane.
Window wiper	To use for cleaning raindrop, dust on the front window to ensure operator have a good view.
Aerial solar caution light	It belongs to aviation caution light and don't need other energy sources except solar energy.
Load rate indicator light	To facilitate in understanding machi load condition for the personnel on the spot, three-colour load rate indicator light similar to traffic signal



详细说明

QUY250-1 液压式履带起重机是在 QUY250 基础上进行升级换代产品。该产品吸收了国内外的先进技术并集我公司多年制造技术和经验,是在国内率先采用最先进的电子控制技术和全新的结构的产品。其主要液压元件采用全球化采购,关键技术指标达到和超过进口同类机型水平,其该机具有如下特点:

上车

动力装置

主要特点:

(1) 原装进口康明斯柴油机,动力强劲,噪音小,振动小。

(2) 大容量油箱,保证长时间的连续工作时间。

型号 QSL-9 进口康明斯电控柴油机
类型 水冷式,直喷,带涡轮增压器。

排量 8.9L

额定功率 246kw/2100rpm

最大扭矩 1424N.m/1500rpm

燃油油箱容量 400L

液压油箱容积 500L

液压系统

主要特点:

(1) 全球采购的先进配置。

(2) 进口主泵,各种控制主阀,阀组均采用进口元件。

(3) 发动机在采用变量双泵+回转泵+油缸泵+冷却泵+补油泵,一组 M7-LUDV 多路阀,该系统具有泵控系统的永远全工作范围控制的精密控制(优于阀控),同时能实现行走、变幅、回转和卷扬复合动作时的组合。油冷却器独立温控散热,回转独立闭式控制,各卷扬独立系统控制。

控制系统

主要特点:

(1) 采用国际先进的泵控系统,控制系统简单可靠,避免了常规阀控系统节流发热,能源损耗,各工作机构平稳,可靠,速度调节范围广,具有精确的机动性能。全程功率匹配,工作效率高。

(2) 电比例先导控制,采用极限负荷调节电子控制系统和微速控制系统。起重作业时,液压系统功率根据发动机的功率变化而变化。负荷调节电子控制系统使其工作范围内均能输出最大功率而不熄火。

电子监控系统

主要特点:

(1) PLC 计算机集成控制系统,使整车控制优化,使各机构动作更加协调,达到节能,可靠的目的。

(2) 电子监控器适时显示并具有故障查询功能, CAN-BUS 总线控制, BODAS 软件和底程序,采用力士乐 RC 控制器由四个电脑(发动机电脑、主控制电脑、力矩限制器电脑,电子监控器电脑)相互通讯并能协调控制和显示。主要动作的逻辑控制可以由电脑和液压完成。

主、副提升卷扬装置

主要特点:

(1) 进口提升减速机,提升马达及平衡阀。

(2) 主、副提升卷扬装置,由变量柱塞马达通过行星减速机驱动。

(3) 采用湿式片式常闭式制动器。

主提升卷扬装置

主要特点:

采用进口抗扭特种钢丝绳,使用过程中抗扭能力强。

卷筒节圆直径 $\phi 660\text{mm}$

钢丝绳直径 $\phi 28\text{mm}$

钢丝绳长度 415m

最大绳速 136m/min

副提升卷扬装置

主要特点:

采用进口抗扭特种钢丝绳,使用过程中抗扭能力强。

卷筒节圆直径 $\phi 660\text{mm}$

钢丝绳直径 $\phi 28\text{mm}$

钢丝绳长度 320m

最大绳速 136m/min

主臂变幅系统

主要特点:

(1) 进口提升减速机,提升马达及平衡阀。

(2) 采用湿式片式常闭制动器。

(3) 采用进口钢丝绳。

卷筒节圆直径 $\phi 526\text{mm}$

钢丝绳直径 $\phi 22\text{mm}$

钢丝绳长度 350m

副臂变幅系统

主要特点:

(1) 进口提升减速机,提升马达及平衡阀。

(2) 采用湿式片式常闭制动器。

(3) 采用进口钢丝绳。

卷筒节圆直径 $\phi 526\text{mm}$

钢丝绳直径 $\phi 22\text{mm}$

钢丝绳长度 250m

托绳卷扬机

钢丝绳直径 $\phi 8.7\text{mm}$

钢丝绳长度 240m

回转系统

主要特点:

(1) 进口回转减速机及回转马达。

(2) 由马达通过行星减速机带动齿轮驱动,可旋转 360° 。

速度 1.7 转/分钟

四个位置止动锁锁定。

驾驶室

主要特点:

(1) 造型美观,人性化设计。

(2) 舒适的驾驶室,现代流线型风格。宽度 1200mm 整个驾驶室可回转可俯仰 20° 角度,方便运输。

(3) 前窗可以不再采用大弧面,以斜面前窗为主,立柱为加强型截面设计。带有空调和暖风机,带后视镜和雨刷器、立体音响等。大屏幕电子监控器和力矩限制器。

(4) 座椅采用德国格拉默可调座椅,司机室内配有干粉灭火器等。

集中润滑系统

主要特点:

对上车的各活动铰点和轴承、回转支承进行定时自动手动润滑。

平衡重

主要特点:

平衡重总重约 88.5 吨。包括一个 16.4 吨的配重底座; 5 个左配重体,各重为 6.9 吨; 5 个右配重体,各重为 7 吨; 2 个辅助配重,各重为 0.92 吨等。

下车结构

主要特点:

底座用高强度板焊接 X 型框架结构,与履带架采用动力销连接,便于快速安装和拆卸。

下车配重

主要特点:

两块焊接压重,重约 24 吨。每块约重 12 吨,安装在下车架的前面和后面。

支重轮装置

主要特点:

每侧各有 14 个,所有的支重轮均装有铜套和浮动式密封以及耐磨润滑油。

下机架支撑油缸装置

主要特点:

四个液压顶升油缸连接在下机架的支撑梁上进行伸缩动作

履带板

主要特点:

左、右履带行走装置共有 120 块履带板,每块履带板的宽度为 1200mm。履带板的张紧程度可以通过液压千斤顶进行调节,调节垫片的位置达到理想的张紧度。

履带动力

主要特点:

独立的液压驱动系统嵌入履带架内。每个液压驱动系统包含了一个液压马达并通过行星减速机带动驱动轮。液压马达和减速机嵌入履带结构内,不超出履带宽度。

行走速度 0.8/1.2 千米/小时。

爬坡能力: 30% (17°)

作业装置

主要特点:

(1) 桁架式臂节材料采用进口高强度焊接结构管材,具有很好的强度和刚度,承载能力高。

(2) 变幅装置采用进口高强度筋板拉板板材。

(3) 重型主臂吊载能力大。

(4) 增加了重型加长主臂工况。

重主臂

主要特点:

臂架为中等截面,两端变截面的空间桁架式结构,钢管焊接。臂长从 15.2 米 ~ 72.2 米。

重型加长主臂

主要特点:

臂长从 73.4 米 ~ 91.4 米。由 7.6 米下臂节, 8.8 米上臂节, 3 米、6 米、9 米、12 米中间臂节组成。

主要特点:

重轻混合主臂。臂长从 75.8 米 ~ 90.8 米, 58.6 米重主臂不变时,接 6.7 米变径臂节,接塔臂臂节至 90.8 米。

固定副臂的组成

主要特点:

固定副臂与主臂有两种角度: 10° 和 30° 主臂和副臂组成。主臂为 45.2 米 ~ 69.2 米的标准臂,副臂为 18 米 ~ 36 米。

主要特点:

塔臂的组成

塔式主臂为 36.2 米 ~ 60.2 米的标准臂。

塔臂为 22 米 ~ 61 米组成。

吊钩

250 吨吊钩 (选用件)

200 吨吊钩

150 吨吊钩

80 吨吊钩

35 吨吊钩

13.5 吨吊钩

Specifications

QJY250-1 hydraulic crawler crane is a new innovation and replacement based on QJY250; this product absorbs advanced technology abroad and inland with the integration of our company's manufacture skill and experience for many years, also QJY250-1 is a brand-new structure product which adopts most advanced electronic-control technology. Its main hydraulic elements are stocked all over the world and sticking point technology guideline has exceeded same-type products imported, several characteristics are specified as follow:

Superstructure

The driving device

Main characteristics:

(1)Original imported diesel engine from Cummins with strong momentum, small noise and little vibration
(2)Large-capacity oil tank to ensure long and continuous working time.

Model: QSL-9 engine from electronic control Cummins
Types: water-cooling, vertical spur, with turbocharger actuator

Drainage Capacity: 8.5L

Rated power output: 245kw/2100rpm

Maximum Torque: 1424N.m/1500rpm

Fuel tank capacity: 400L

Hydraulic oil tank capacity: 500L

Hydraulic System:

(1)Advanced configuration stocked all over the world
(2)Imported main pump, various control main valve and valve group adopt imported elements.
(3)Engine adopts variable double-main pump + slewing pump + oil cylinder pump + cooling pump + oil supply pump and a group of MT-LUDV valves. The function of the pump system is better than that of the valve system with full working range precise control. The travel, derricking, slew and winch can work at the same time. The oil cooler independently controls the temperature. The slew system works closely and independently. The winches work independently.

Control System

Main characteristics:

(1)To adopt international advanced pump-control system, control system is easy and reliable, this system avoids throttle radiation and energy wastage in general valve-control system. Stable and reliable working institution and wide speed adjustment range with precise joggle capability. Full power matching and high working efficiency.
(2)The electrical control system and the low speed control system are adjusted by the extreme load. The power output of the hydraulic system may vary with the power output of the engine when lifting the load. The electrical control system of load adjusting makes the engine have the maximum power output and the engine will not switch off within the working range.

Electric monitoring system

Main characteristics:

(1)PLC computer integration control system optimizes whole crane control and harmonizes every system movement to reach saving energy and reliability.
(2)The electric monitor has the function of troubleshooting, CAN-BUS, the software of BODAS. The system adopts RC controller from Rexroth with four computers (the engine computer, the computer of main control, the computer of moment limiter and the computer of electric monitor). The logic control of main actions is completed by the computers and hydraulic system.

Main and auxiliary hoist winches

Main characteristics:

(1)Imported hoist gearbox, hoist motor and balance valve.
(2)Main/aux hoist winch device, driven by variable displacement motor through planetary reduction gear
(3)Adopt wet-disc and normal closed brake.

Main hoist winch device

Main characteristic:

Adopt imported anti-torsion special and strong wire rope.
The drum diameter of pitch circle $\phi 660\text{mm}$

The diameter of wire rope: $\phi 28\text{mm}$

The length of wire rope: 415m

Maximum speed: 136m/min

Auxiliary hoist winch device

Main characteristics:

Adopt imported anti-torsion special and strong wire rope.

The drum diameter of pitch circle $\phi 660\text{mm}$

The diameter of wire rope: $\phi 28\text{mm}$

The length of wire rope: 320m

Maximum speed: 136m

Boom derricking system

Main characteristics:

(1)Imported hoist reduction gear, hoist motor and balance valve.

(2)Wet-disc and normally closed brake

(3)Imported wire rope

The drum diameter of pitch circle $\phi 526\text{mm}$

The diameter of wire rope: $\phi 22\text{mm}$

The length of wire rope: 350m

Jib derricking system

Main characteristics:

(1)Imported hoist reduction gear, hoist motor and balance valve.

(2)Wet-disc and normally closed brake

(3)Imported wire rope

The drum diameter of pitch circle $\phi 526\text{mm}$

The diameter of wire rope: $\phi 22\text{mm}$

The length of wire rope: 250m

Dragrope winch

The diameter of wire rope: $\phi 8.7\text{mm}$

The length of wire rope: 240m

Slewing system

Main characteristics:

(1)Imported slewing reduction gear and slewing motor

(2)The slewing system can be turned by 360°. The reduction gear drives the teeth.

Speed: 1.7r/m

Four pins are locked.

The cabin

Main characteristics:

(1)Gorgeous structure, humanity design

(2)Comfortable cab, streamline style. The width of the cabin is 1200mm, the cabin can swing and pitch by 20° convenient for transportation

(3)The front window is inclined and the posts are designed with the cross section with high strength. There are air-conditioner, heater, rear view mirror, wiper, stereos and fire extinguisher in the cabin. The electric monitor and moment limiter with large screen are in the cabin.

(4)The seat can be adjusted

Lubricating system

Main characteristics:

Apply grease on the movable points, bearings and slewing chassis at intervals, manual lubrication

Counterweight

Main characteristics:

General weight is 88.5t, which is composed of counterweight chassis 16.4t, five left counterweight bodies, each is 6.9t, the right counterweight has five blocks and each is 7t, two auxiliary counterweight and each is 0.92t.

Undercarriage

Main characteristics:

Low frame

Weld the steel plate with high strength into X-structure.

The crawler frame is connected with low frame by the driving pin for the convenience of installation and disassembly.

Central ballast

Main characteristics:

Two welded blocks installed in front and back of the understructure. The total weight is 24t. Each block is 12t.

Track roller

Main characteristics:

Every side has 14 track rollers. All track rollers are equipped with bushings, seals and lubricating oil.

Undercarriage frame support cylinder

Main characteristics:

The four hydraulic jack-up cylinders are connected with the boom.

Track shoe

Main characteristics:

The left and right crawlers have 120 track shoes. The width of the track shoe is 1200mm. The tension state of track shoe can be adjusted by the hydraulic jack until the adjusting plate has the ideal position.

Pedrail drive

Main characteristics:

The independent hydraulic driving system is within the crawler frame. Every hydraulic driving system has a hydraulic motor. The hydraulic motor and reduction gear in the crawler frame can not exceed the width of the track shoe.
Travel speed: 0.8/1.2 km/h
Grade ability: 30% (17°)

Working equipments

Main characteristics:

(1)Imported beam boom section material, with high strength welding structure tube, with good strength and steel and high carrying capacity.

(2)The derricking device adopts the structure of pendant bar with high strength.

(3)'Heavy boom's lifting capacity is big

(4)Increase heavy runner duty.

Boom

Main characteristics:

The insert section has the equal cross section. The top and the foot have the variable cross sections. The boom is the lattice structure. The steel pipes are welded together. The standard boom is 15.2~22m.

Heavy lengthening boom

Main characteristics:

Boom length from 73.4m ~ 91.4m, which to be composed of lower section 7.6m, upper section 8.8m, 3m, 6m, 9m and 12m intermediate section.

Heavy-light boom combination

Main characteristics:

Boom length from 75.8m ~ 90.8m, connecting tapered section 6.7m and connect luffing jib section until 90.8m when heavy boom 58.6m don't change.

Fixed jib composing

Main characteristics:

Two kinds of angle between boom and fixed jib: 10° and 30°. Boom and fixed jib combination: the boom is 45.2~69.2m. The fixed jib is 18m~36m.

Luffing jib composing

Main characteristics:

The luffing boom is 36.2~60.2m

The luffing jib is 22m~61m.

Hook Blocks

250t hook (optional)

200t hook

150t hook

80t hook

35t hook

13.5t hook

工况符号 The symbols of working conditions



重主臂工况
Heavy boom duty



重型加长主臂工况
Heavy lengthening boom duty



辅助臂工况
Runner duty



重轻混合主臂工况
Heavy-light boom combination duty



固定副臂工况
Fixed jib duty



塔式工况
Luffing jib duty



臂杆组合

Boom combination

重主臂工况

最大起重量: 260吨 × 5米

最大臂杆长度: 72.2米

Heavy boom

Max. lifting capacity: 260t × 5m

Max. boom length: 72.2m



主臂 Boom
15.2m-72.2m



辅助臂工况

最大起重量: 25吨 × 30米

最大臂杆长度: 72.2米

Runner

Max. lifting capacity: 25t × 30m

Max. boom length: 72.2m



主臂 Boom
15.2m-72.2m



重轻混合主臂工况

最大起重量: 31.5吨 × 15米

最大组合: 90.8米

Heavy-light boom combination

Max. lifting capacity: 31.5t × 15m

Max. boom and jib combination:
90.8m



主臂 Boom
75.8m-90.8m



臂杆组合

Boom combination

重型加长主臂工况

最大起重量: 54.9吨 × 14.5米
最大臂杆长度: 91.4米

Heavy lengthening boom

Max. lifting capacity: 54.9t × 14.5m
Max. boom length: 91.4m



主臂 Boom
73.4m-91.4m



固定副臂工况

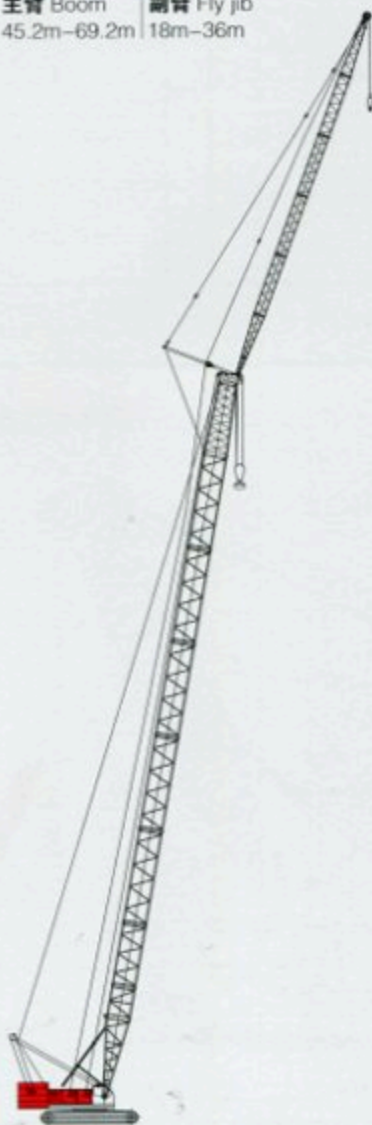
最大起重量: 18.6吨 × 18米
最大臂杆长度: 66.2米 + 36米

Fixed jib

Max. lifting capacity: 18.6t × 18m
Max. boom length: 66.2m + 36m



主臂 Boom | 副臂 Fly jib
45.2m-69.2m | 18m-36m



塔式工况

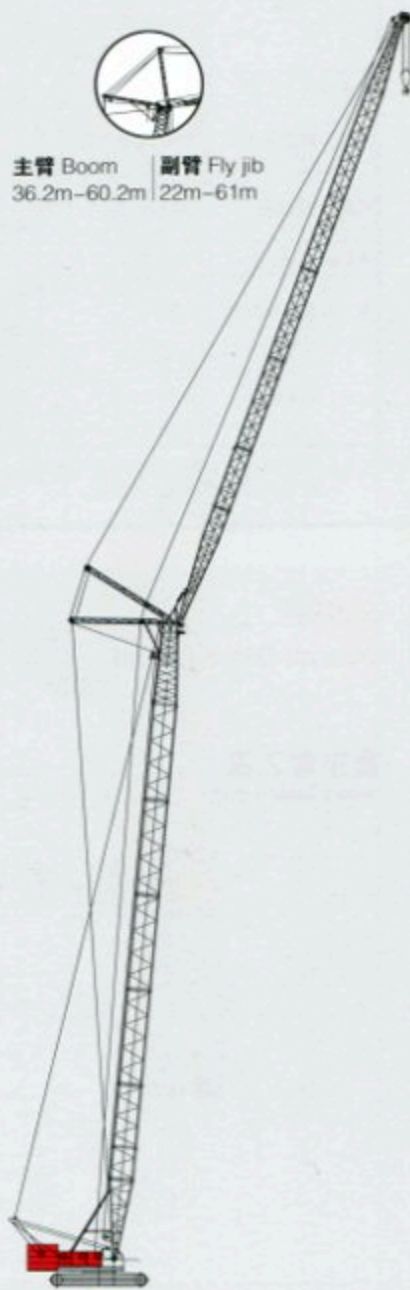
最大起重量: 57.8吨 × 14米
最大组合: 60.2米 + 61米

Luffing jib

Max. lifting capacity: 57.8t × 14m
Max. boom and jib combination:
60.2m + 61m



主臂 Boom | 副臂 Fly jib
36.2m-60.2m | 22m-61m





主要技术参数

Technical Data

项目名称		技术参数	
主臂长度 (m)		重主臂: 72.2 重型加长主臂: 91.4 重轻混合主臂: 90.8	
主臂最大额定起重量 (t)		260	
塔臂长度 (m)		22~61	
塔臂起重量 (t)		最大起重量: 57.8 (2~5倍率)	
吊钩配置 (t)		250/200/150/80/35/13.5	
速度	提升 (m/min)	0~136	
	变幅 (m/min)	56	
	回转速度 (r/min)	0~1.7	
	行走速度 (km/h)	(0.8/1.2)	
爬坡能力 (°)	30%	17	
带基本臂自重 (t)	215 (塔式230)	接地比压 (Kg/cm ²)	1.14~1.36
起重臂变幅角度 (°)	30~80	塔式主臂变幅角度 (°)	65~85
塔式副臂变幅角度 (°)	15~70		
最大起重力矩 (t·m)	1300	运输尺寸 (mm) (长 × 宽 × 高) 12618 × 3280 × 3513	
发动机	型号	QSL9 进口康明斯电控柴油机	
	功率 (KW)	246	
	转速 (rpm)	2100	

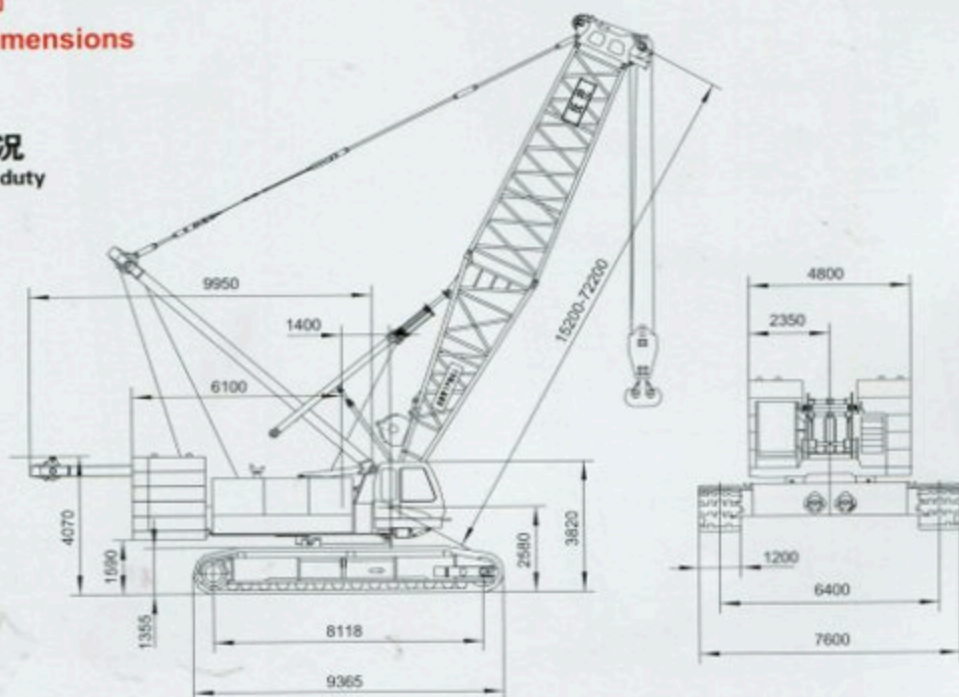
Descriptions		Data	
Boom Length (m)		Heavy boom: 72.2 Heavy duty boom: 91.4 Heavy and light boom: 90.8	
Boom max. Rated Load Capacity (t)		260	
Length of Luffing Jib (m)		22~61	
Lifting Capacity of Luffing Jib (t)		Max. load 57.8 (with parts of line 2~5)	
Hook Blocks (t)		13.5/35/80/150/200/250	
Speed	Hoist (m/m)	0~136	
	Derricking (m/m)	56	
	Slew (r/m)	0~1.7	
	Travel (km/h)	(0.8/1.2)	
Grade ability (°)	30%	17	
Machine Mass with basic boom (t)	215 (Tower crane: 230)	Ground pressure (Kg/cm ²)	1.14~1.36
Boom Angle (°)	30~80	Boom Angle (with Luffing jib) (°)	65~85
Luffing Jib (°)	15~70		
Max. Load Torque (t/m)	1300	Main body dimensions (Length × Width × Height) 12618 × 3280 × 3513	
The Engine	Model	QSL9 the engine from Cummins	
	Power Output (KW)	246	
	Rotary Speed (rpm)	2100	

注: (1) 带※速度是随载荷的不同而变化。
(2) 此机可有多种功能供选择。

Notes: 1. The speed with ※ may vary with the different load.
2. Multi-functions can be optional for this crane.

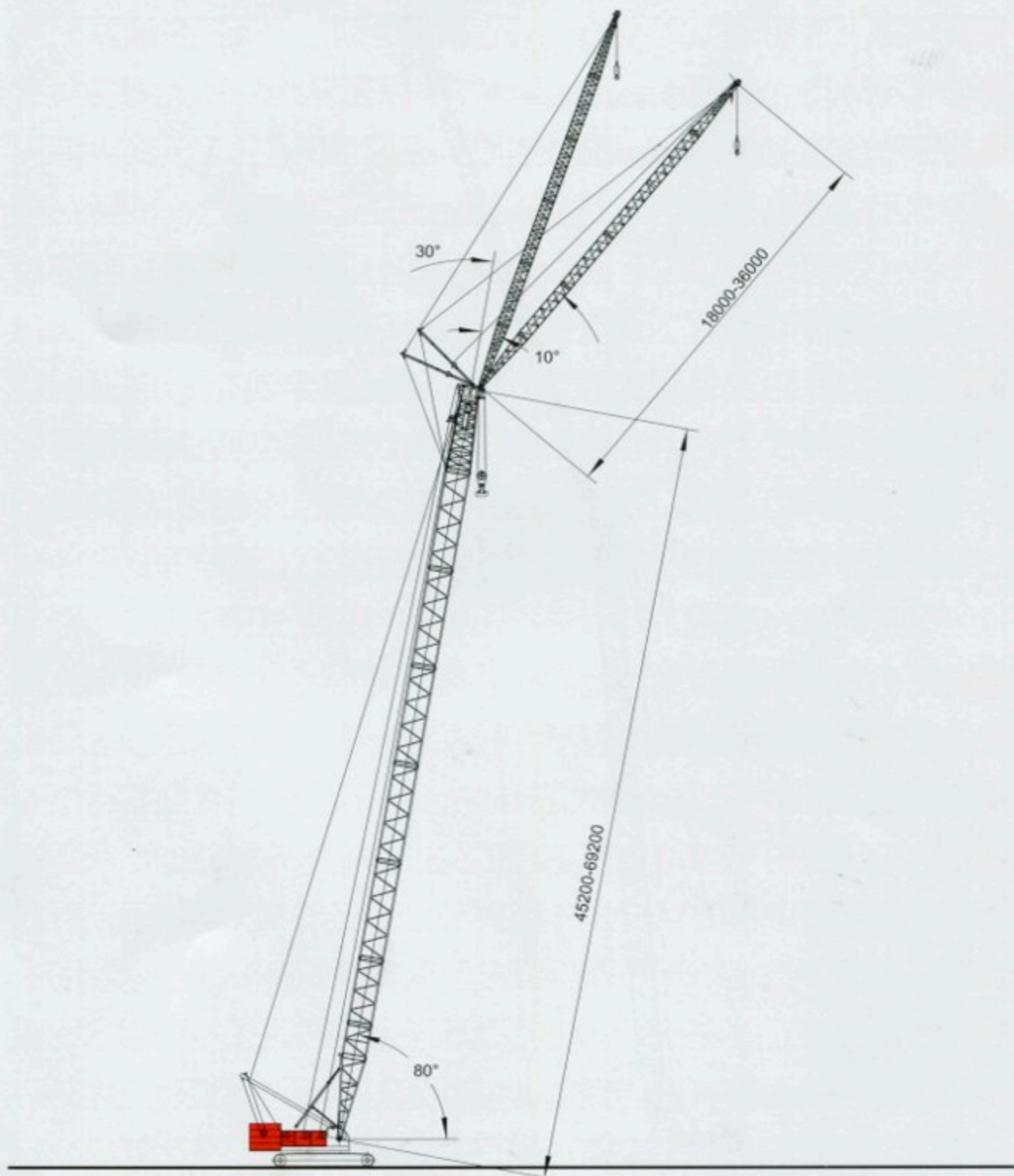
总体尺寸
Overall Dimensions

重主臂工况
Heavy boom duty



总体尺寸

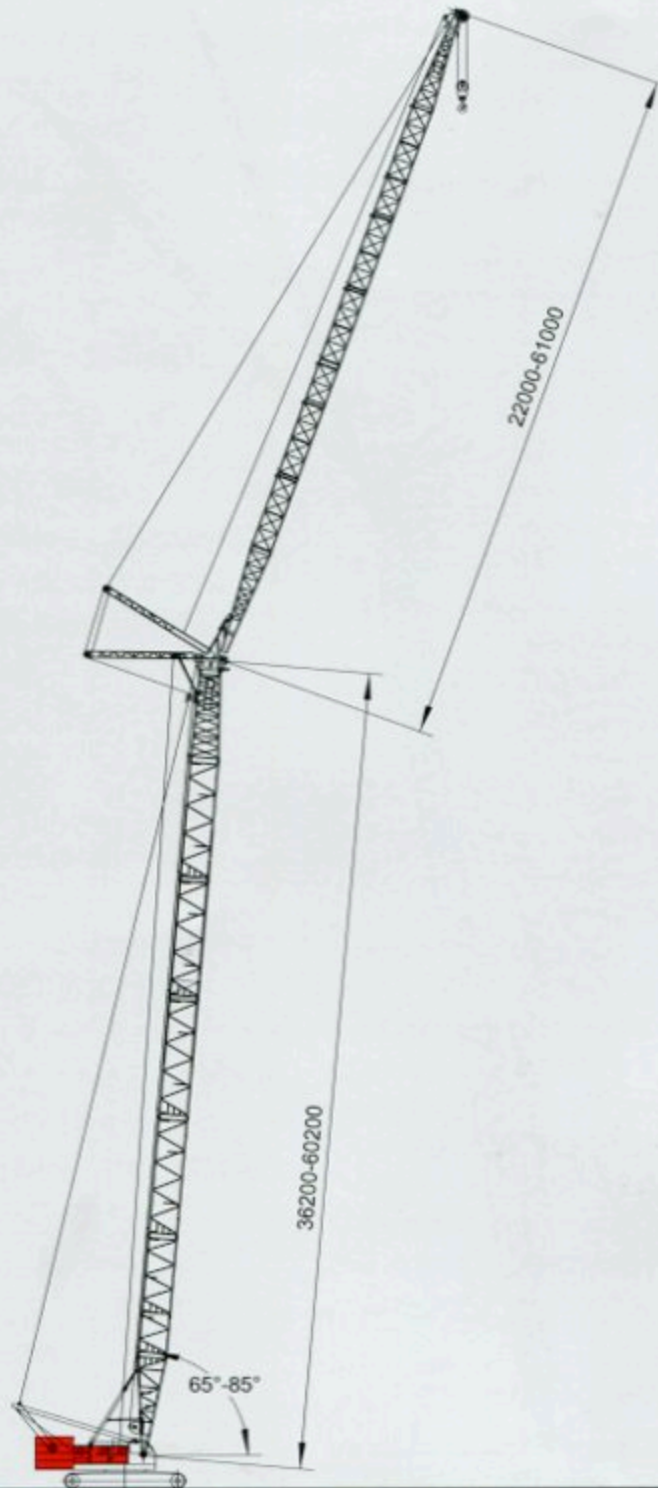
Overall Dimensions





总体尺寸

Overall Dimensions

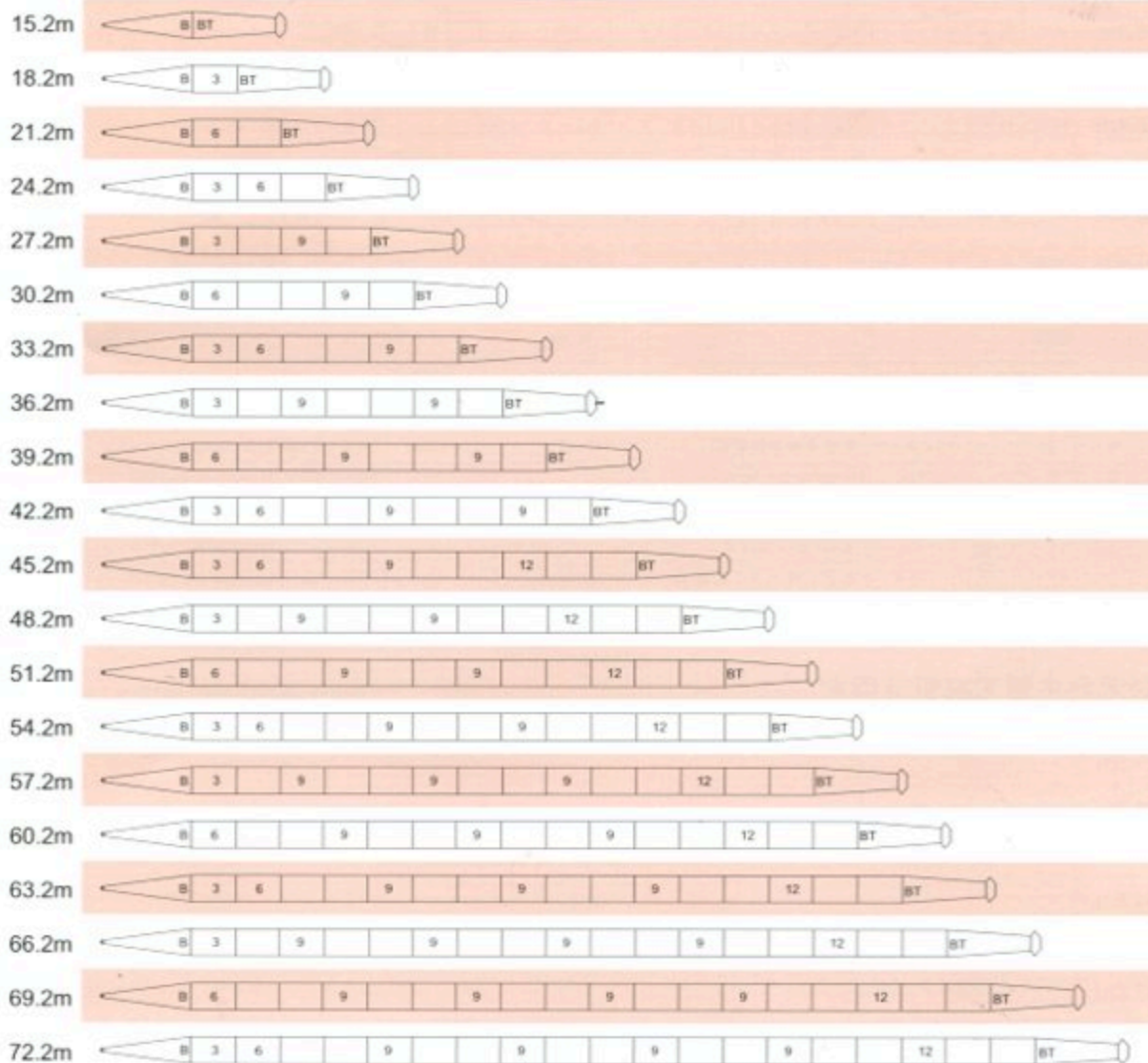


主臂和副臂组合

Boom and Jib Combinations

重主臂工况臂节组合

Heavy boom section combination



注解

符号	臂杆长度	备注
	7.6米	主臂基础臂节
	7.6米	主臂顶部臂节
	3米	主臂3米中间臂节
	6米	主臂6米中间臂节
	9米	主臂9米中间臂节
	12米	主臂12米中间臂节

Note

Symbol	Boom length	Remarks
	7.6m	Boom foot section
	7.6m	Boom top section
	3m	Boom 3m intermediate section
	6m	Boom 6m intermediate section
	9m	Boom 9m intermediate section
	12m	Boom 12m intermediate section

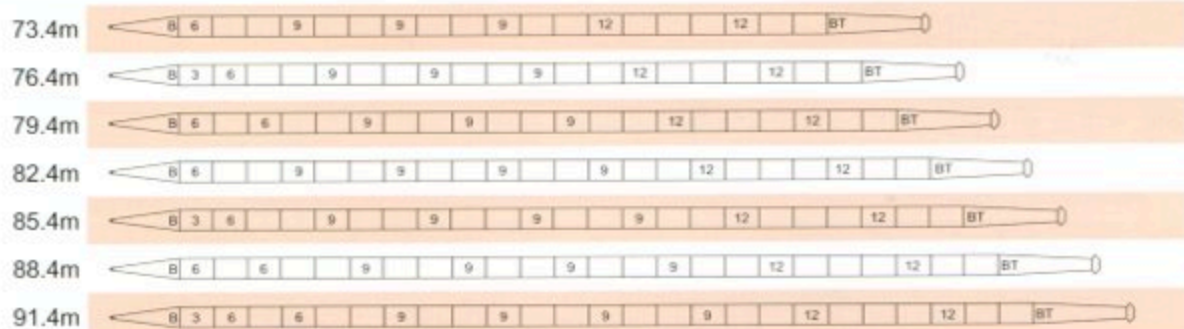


主臂和副臂组合

Boom and Jib Combinations

重型加长主臂工况臂节合

Heavy lengthening boom section combination



注解

符号	臂杆长度	备注
	7.6米	主臂基础臂节
	8.8米	重型主臂顶部臂节
	3米	主臂3米中间臂节
	6米	主臂6米中间臂节
	9米	主臂9米中间臂节
	12米	重型主臂12米中间臂节

Note

Symbol	Boom length	Remarks
	7.6m	Boom foot section
	8.8m	Heavy boom top section
	3m	Boom 3m intermediate section
	6m	Boom 6m intermediate section
	9m	Boom 9m intermediate section
	12m	Boom 12m intermediate section

重轻混合主臂工况臂节组合

Heavy-light boom section combination



注解

符号	臂杆长度	备注
	7.6米	主臂基础臂节
	7.5米	塔臂顶部臂节
	6米	主臂6米中间臂节
	9米	主臂9米中间臂节
	6.7米	6.7米变径臂节
	3米	塔臂3米中间臂节
	6米	塔臂6米中间臂节
	9米	塔臂9米中间臂节

Note

Symbol	Boom length	Remarks
	7.6m	Boom foot section
	7.5m	Luffing jib top section
	6m	Boom 6m intermediate section
	9m	Boom 9m intermediate section
	6.7m	6.7m tapered section
	3m	Luffing jib 3m intermediate section
	6m	Luffing jib 6m intermediate section
	9m	Luffing jib 9m intermediate section

主臂和副臂组合

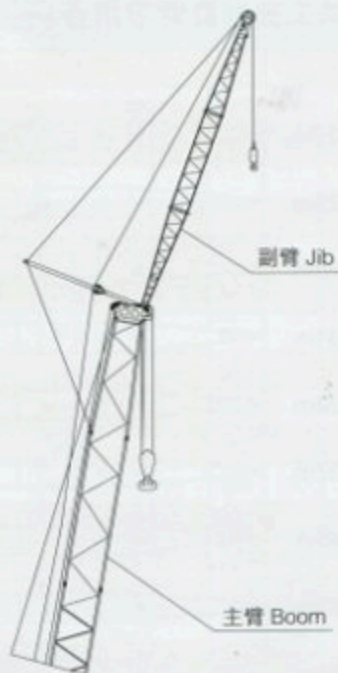
Boom and Jib Combinations

固定副臂工况臂节组合

Fixed jib section combination

主臂长度 副臂长度 副臂组合
Boom length Fly jib length Fly jib combination

45.2m ↓ 69.2m	18m	
	24m	
	30m	
	36m	



注解

符号	臂杆长度	备注
	6米	固定副臂基础臂节
	6米	固定副臂顶部臂节
	6米	固定副臂6米中间臂节

Note

Symbol	Length	Remarks
	6m	Fly jib basic section
	6m	Fly jib top section
	6m	Fly jib 6m intermediate section

塔式工况主臂臂节组合

Luffing jib boom section combination

36.2m	
39.2m	
42.2m	
45.2m	
48.2m	
51.2m	
54.2m	
57.2m	
60.2m	

注解

符号	臂杆长度	备注
	7.6米	主臂基础臂节
	7.6米	主臂顶部臂节
	3米	主臂3米中间臂节
	6米	主臂6米中间臂节
	9米	主臂9米中间臂节
	12米	主臂12米中间臂节

Note

Symbol	Boom length	Remarks
	7.6m	Boom foot section
	7.6m	Boom top section
	3m	Boom 3m intermediate section
	6m	Boom 6m intermediate section
	9m	Boom 9m intermediate section
	12m	Boom 12m intermediate section

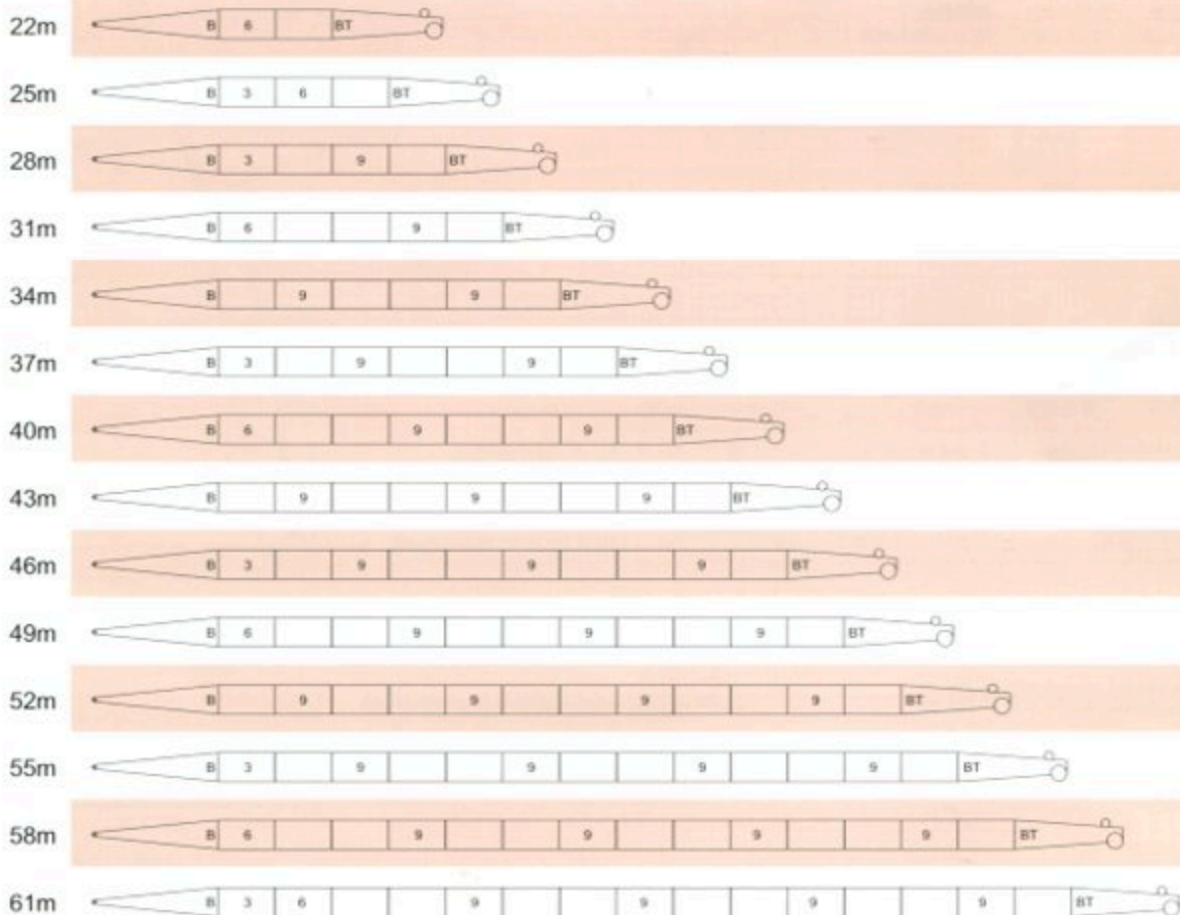


主臂和副臂组合

Boom and Jib Combinations

塔式工况塔臂臂节组合

Luffing jib section combination



注解

符号	臂杆长度	备注
	8.5米	塔臂基础臂节
	7.5米	塔臂顶部臂节
	3米	塔臂3米中间臂节
	6米	塔臂6米中间臂节
	9米	塔臂9米中间臂节

Note

Symbol	Boom length	Remarks
	8.5m	Luffing jib foot section
	7.5m	Luffing jib top section
	3m	Luffing jib 3m intermediate section
	6m	Luffing jib 6m intermediate section
	9m	Luffing jib 9m intermediate section

重主臂工况额定起重能力表

Rated Lifting Capacity Load Chart(Heavy Boom Duty)



15.2m-72.2m



360°



88.5t



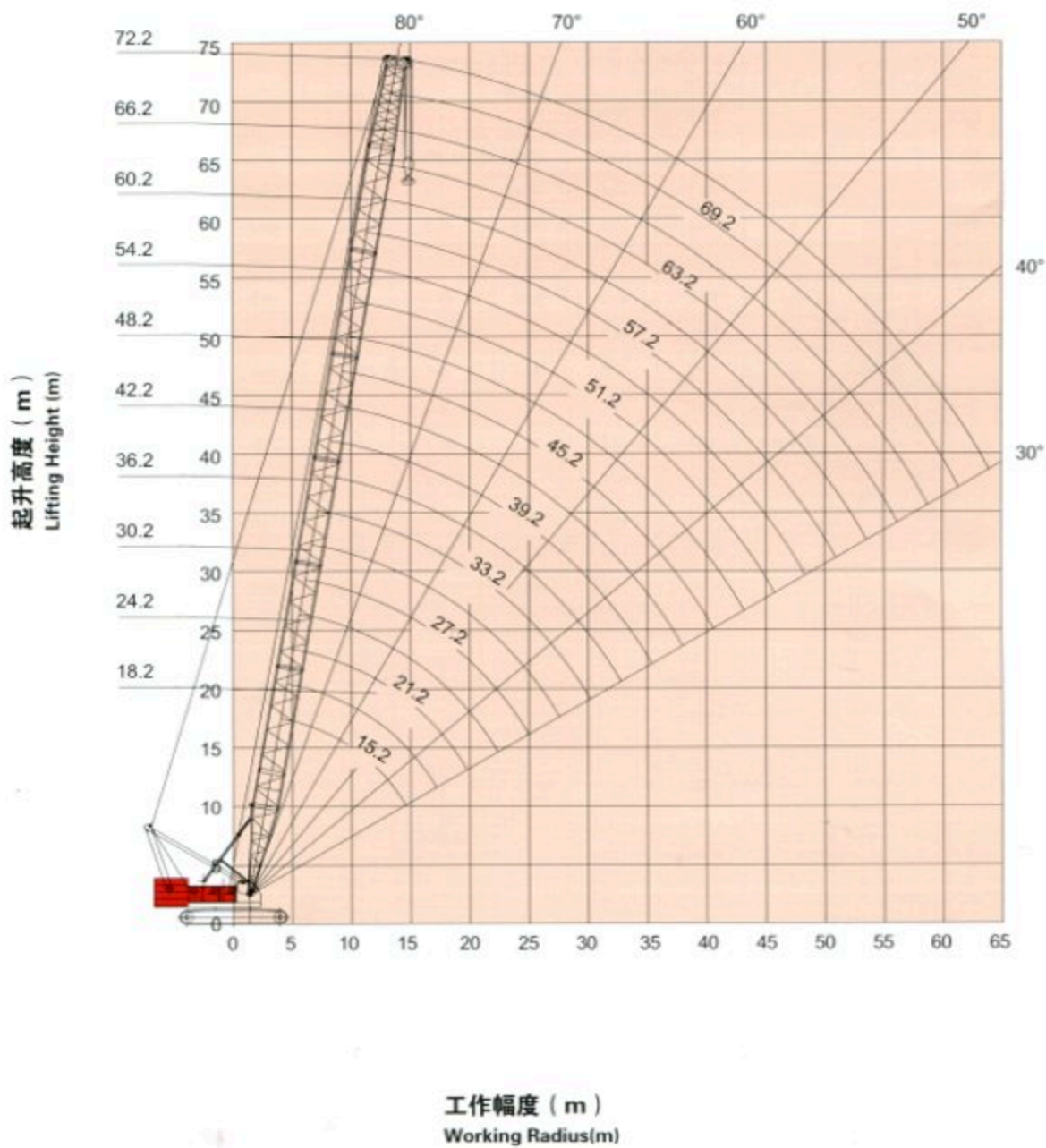
24t

	15.2	21.2	27.2	33.2	39.2	45.2	51.2	57.2	63.2	69.2	72.2	
4.8	260.0											4.8
5.0	260.0											5.0
6.0	210.0	6.1/196										6.0
7.0	180.2	165.5	7.1/164.1									7.0
8.0	159.0	150.5	142.9	133.9								8.0
9.0	135.1	128.6	122.7	117.5	112.2							9.0
10.0	121.8	118.5	115.0	109.1	103.6	10.2/96	11.3/82.6					10.0
12.0	96.3	95.4	92.8	88.6	84.6	80.8	77.4	12.3/72	13.4/63.3			12.0
14.0	77.8	76.9	76.5	74.3	71.2	68.3	65.5	62.8	60.2	14.4/56.4	14.9/53	14.0
16.0	15.1/70.5	64.2	63.8	63.4	61.3	58.9	56.6	54.4	52.2	50.4	49.3	16.0
18.0		54.8	54.4	54.1	53.6	51.6	49.7	47.7	45.8	44.4	43.4	18.0
20.0		47.7	47.3	47.0	46.5	45.8	44.1	42.3	40.7	39.4	38.6	20.0
22.0		20.3/46.9	41.7	41.3	40.9	40.4	39.5	37.9	36.4	35.3	34.6	22.0
24.0			37.2	36.8	36.4	35.9	35.5	34.2	32.8	31.9	31.2	24.0
26.0			25.5/34.4	33.1	32.6	32.1	31.7	31.1	29.8	29.0	28.3	26.0
28.0				30.0	29.5	29.0	28.6	28.0	27.2	26.4	25.8	28.0
30.0				27.3	26.8	26.3	25.9	25.4	24.8	24.2	23.6	30.0
32.0				30.7/26.5	24.5	24.0	23.6	23.1	22.5	22.0	21.7	32.0
34.0					22.5	22.0	21.6	21.0	20.5	20.1	20.0	34.0
36.0					35.8/20.9	20.2	19.8	19.3	18.8	18.4	18.2	36.0
38.0						18.7	18.3	17.7	17.2	16.9	16.7	38.0
40.0						17.3	16.9	16.3	15.8	15.4	15.2	40.0
42.0						41/16.6	15.6	15.1	14.5	14.1	14.0	42.0
44.0							14.5	13.9	13.4	13.0	12.8	44.0
46.0							13.5	12.9	12.4	12.0	11.8	46.0
48.0							46.2/13.4	12.0	11.5	11.0	10.9	48.0
50.0								11.1	10.6	10.2	10.0	50.0
52.0								51.4/10.6	9.8	9.4	9.2	52.0
54.0									9.1	8.7	8.5	54.0
56.0									8.4	8.0	7.8	56.0
58.0									56.6/8.2	7.4	7.2	58.0
60.0										7.0	6.8	60.0
62.0										61.8/6.7	6.3	62.0
64.0											5.8	64.0
66.0											5.7	66.0



重主臂工况作业范围

Working Range (Heavy Boom Duty)



起升高度 (m)
Lifting Height (m)

工作幅度 (m)
Working Radius(m)

辅助臂工况额定起重能力表

Rated Lifting Capacity Load Chart(Runner Duty)



15.2m-72.2m



360°



88.5t



24t

	15.2	21.2	27.2	33.2	39.2	45.2	51.2	57.2	63.2	69.2	72.2	
6.0	25.0/6.2											6.0
7.0	25.04	25.0/7.3										7.0
8.0	25.04	25.04	25.0/8.3									8.0
9.0	25.04	25.04	25.04	25.0/9.4								9.0
10.0	25.04	25.04	25.04	25.04	25.0/10.4	25.0/11.4						10.0
12.0	25.04	25.04	25.04	25.04	25.04	25.04	25.0/12.5	25.0/13.5				12.0
14.0	25.04	25.04	25.04	25.04	25.04	25.04	25.00	25.00	25.0/14.6			14.0
15.0	25.04	25.04	25.04	25.04	25.04	25.04	25.00	25.00	25.00	25.0/15.6		15.0
16.0	25.0/16.9	25.04	25.04	25.04	25.04	25.04	25.00	25.00	25.00	25.00	25.0/16.1	16.0
18.0		25.04	25.04	25.04	25.04	25.04	25.00	25.00	25.00	25.00	25.00	18.0
20.0		25.04	25.04	25.04	25.04	25.04	25.00	25.00	25.00	25.00	25.00	20.0
22.0		25.04	25.04	25.04	25.04	25.04	25.00	25.00	25.00	25.00	25.00	22.0
24.0			25.04	25.04	25.04	25.04	25.00	25.00	25.00	25.00	25.00	24.0
26.0			25.04	25.04	25.04	25.04	25.00	25.00	25.00	25.00	25.00	26.0
28.0			25.0/27.3	25.04	25.04	25.04	25.00	25.00	25.00	25.00	24.58	28.0
30.0				25.04	25.04	25.04	24.75	24.17	23.59	22.82	22.44	30.0
32.0				24.40	23.76	23.18	22.60	21.93	21.35	20.77	20.48	32.0
34.0				24.0/32.5	21.90	21.22	20.64	20.06	19.48	18.80	18.51	34.0
36.0					20.20	19.63	18.95	18.37	17.79	17.20	16.82	36.0
38.0					18.9/37.7	18.14	17.45	16.87	16.28	15.70	15.31	38.0
40.0						16.82	16.14	15.55	14.96	14.28	13.99	40.0
42.0						15.60	15.01	14.32	13.73	13.15	12.85	42.0
44.0							13.87	13.28	12.69	12.00	11.71	44.0
46.0							12.93	12.34	11.65	11.05	10.76	46.0
48.0							12.00	11.39	10.79	10.10	9.80	48.0
50.0								10.63	9.93	9.33	9.04	50.0
52.0								9.80	9.16	8.57	8.27	52.0
54.0									8.49	7.89	7.49	54.0
56.0									7.80	7.20	6.80	56.0
58.0									7.20	6.50	6.20	58.0
60.0										6.00	5.60	60.0
62.0										5.40	5.10	62.0
64.0											4.60	64.0



带辅助臂时主臂工况额定起重能力表

Rated Lifting Capacity Load Chart
(Boom Duty With Runner)



15.2m-72.2m



360°



88.5t



24t

高度 (m)	15.2	18.2	21.2	24.2	27.2	30.2	33.2	36.2	39.2	42.2	高度 (m)
5.0	247.6	227.0/5.4	198.0/5.9								5.0
6.0	208.0	201.0	193.0	178.7/6.4	160.6/6.9						6.0
7.0	173.2	168.7	164.3	161.1	158.3	146.3/7.4					7.0
8.0	157.5	153.0	148.9	145.0	141.2	137.7	132.3	121.5/8.5			8.0
9.0	133.6	130.1	127.0	124.0	121.1	118.5	115.9	113.3	110.7	100.9/9.5	9.0
10.0	116.0	113.2	110.7	108.3	106.1	103.8	101.7	99.6	97.7	95.7	10.0
12.0	89.9	89.5	87.7	86.0	84.4	82.9	81.3	79.9	78.4	77.0	12.0
14.0	72.5	72.2	72.0	71.1	69.9	68.7	67.5	66.3	65.2	64.1	14.0
15.0	66.2/14.9	65.9	65.6	65.4	64.4	63.3	62.3	61.2	60.2	59.2	15.0
16.0		60.6	60.3	60.0	59.6	58.7	57.7	56.7	55.8	54.9	16.0
18.0		54.3/17.5	51.5	51.3	51.0	50.7	50.1	49.3	48.5	47.7	18.0
20.0			44.9	44.6	44.3	44.0	43.8	43.4	42.7	42.0	20.0
22.0			44.5/20.1	39.4	39.1	38.8	38.5	38.2	37.9	37.5	22.0
24.0				38.0/22.7	34.8	34.5	34.2	33.9	33.6	33.3	24.0
26.0					32.9/25.3	31.0	30.7	30.3	30.1	29.8	26.0
28.0						28.2/27.9	27.8	27.5	27.2	26.8	28.0
30.0							25.3	25.0	24.6	24.3	30.0
32.0							25.0/30.3	22.7	22.5	22.2	32.0
34.0								21.8/33.1	20.6	20.3	34.0
36.0									21.1/35.7	18.6	36.0
38.0										17.1	38.0
倍率	19	17	15	14	12	11	10	10	9	8	倍率

带辅助臂时主臂工况额定起重能力表

Rated Lifting Capacity Load Chart (Boom Duty With Runner)



15.2m-72.2m



360°



88.5t



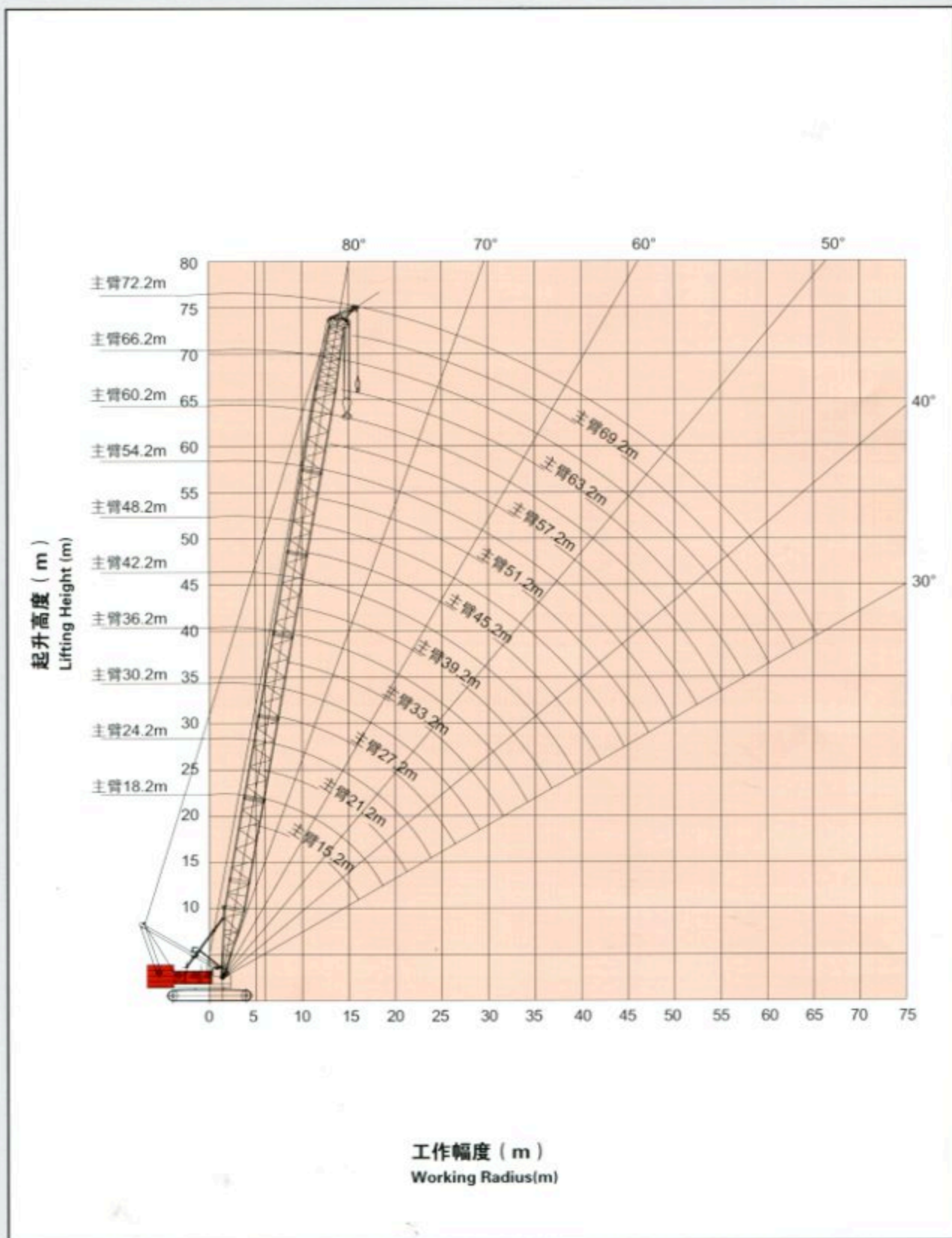
24t

10.0	12.0	14.0	15.0	16.0	18.0	20.0	22.0	24.0	26.0	28.0	30.0	32.0	34.0	36.0	38.0	40.0	42.0	44.0	46.0	48.0	50.0	52.0	54.0	56.0	58.0	60.0	62.0	64.0	倍率		
45.2	48.2	51.2	54.2	57.2	60.2	63.2	66.2	39.2	72.2																						
91.8	84.4/10.6	79.3/11.1	74.7/11.6																												
75.7	74.3	73.0	71.8	70.3/12.1	65.9/12.6	61.5/13.2	56.9/13.7																								
63.1	62.0	61.1	60.0	58.9	57.9	56.8	55.7	52.6/14.2	48.1/14.7	44.0	40.0	36.0	32.0	28.0	24.0	20.0	16.0	12.0	8.0	4.0											
58.2	57.3	56.3	55.4	54.4	53.5	52.6	50.6	49.5	47.6	45.5	43.5	41.5	39.5	37.5	35.5	33.5	31.5	29.5	27.5	25.5	23.5	21.5	19.5	17.5	15.5	13.5	11.5	9.5	7.5	5.5	
54.0	53.1	52.7	52.0	51.3	50.4	49.7	48.3	46.8	45.3	43.8	42.3	40.8	39.3	37.8	36.3	34.8	33.3	31.8	30.3	28.8	27.3	25.8	24.3	22.8	21.3	19.8	18.3	16.8	15.3	13.8	
46.9	46.2	45.7	45.2	44.5	43.8	43.1	42.6	41.9	40.5	39.0	37.5	36.0	34.5	33.0	31.5	30.0	28.5	27.0	25.5	24.0	22.5	21.0	19.5	18.0	16.5	15.0	13.5	12.0	10.5	9.0	
41.3	40.6	40.2	39.8	39.1	38.5	38.0	37.4	36.8	36.3	35.7	35.1	34.5	33.9	33.3	32.7	32.1	31.5	30.9	30.3	29.7	29.1	28.5	27.9	27.3	26.7	26.1	25.5	24.9	24.3	23.7	23.1
36.8	36.1	35.8	35.4	34.8	34.2	33.7	33.2	32.7	32.1	31.5	31.0	30.4	29.8	29.2	28.6	28.0	27.4	26.8	26.2	25.6	25.0	24.4	23.8	23.2	22.6	22.0	21.4	20.8	20.2	19.6	19.0
33.0	32.4	32.1	31.7	31.2	30.7	30.1	29.7	29.2	28.7	28.1	27.6	27.0	26.4	25.8	25.2	24.6	24.0	23.4	22.8	22.2	21.6	21.0	20.4	19.8	19.2	18.6	18.0	17.4	16.8	16.2	15.6
29.5	29.2	28.9	28.6	28.1	27.7	27.2	26.7	26.2	25.8	25.3	24.8	24.3	23.8	23.3	22.8	22.3	21.8	21.3	20.8	20.3	19.8	19.3	18.8	18.3	17.8	17.3	16.8	16.3	15.8	15.3	14.8
26.5	26.2	25.9	25.7	25.4	25.1	24.6	24.1	23.7	23.3	22.8	22.3	21.8	21.3	20.8	20.3	19.8	19.3	18.8	18.3	17.8	17.3	16.8	16.3	15.8	15.3	14.8	14.3	13.8	13.3	12.8	12.3
24.0	23.7	23.4	23.1	22.9	22.6	22.3	22.0	21.5	21.1	20.6	20.1	19.6	19.1	18.6	18.1	17.6	17.1	16.6	16.1	15.6	15.1	14.6	14.1	13.6	13.1	12.6	12.1	11.6	11.1	10.6	10.1
21.9	21.6	21.3	20.9	20.6	20.3	20.0	19.7	19.5	19.2	18.9	18.6	18.3	18.0	17.7	17.4	17.1	16.8	16.5	16.2	15.9	15.6	15.3	15.0	14.7	14.4	14.1	13.8	13.5	13.2	12.9	12.6
19.9	19.6	19.3	19.0	18.8	18.5	18.2	17.9	17.5	17.2	16.9	16.6	16.3	16.0	15.7	15.4	15.1	14.8	14.5	14.2	13.9	13.6	13.3	13.0	12.7	12.4	12.1	11.8	11.5	11.2	10.9	10.6
18.3	17.9	17.7	17.4	17.1	16.8	16.5	16.2	15.9	15.5	15.2	14.9	14.6	14.3	14.0	13.7	13.4	13.1	12.8	12.5	12.2	11.9	11.6	11.3	11.0	10.7	10.4	10.1	9.8	9.5	9.2	8.9
16.8	16.5	16.2	15.9	15.6	15.3	15.0	14.7	14.4	14.0	13.7	13.4	13.1	12.8	12.5	12.2	11.9	11.6	11.3	11.0	10.7	10.4	10.1	9.8	9.5	9.2	8.9	8.6	8.3	8.0	7.7	7.4
15.5	15.2	14.8	14.5	14.3	14.0	13.7	13.4	13.0	12.7	12.4	12.1	11.8	11.5	11.2	10.9	10.6	10.3	10.0	9.7	9.4	9.1	8.8	8.5	8.2	7.9	7.6	7.3	7.0	6.7	6.4	6.1
	14.0	13.7	13.4	13.0	12.7	12.4	12.1	11.9	11.6	11.3	11.0	10.7	10.4	10.1	9.8	9.5	9.2	8.9	8.6	8.3	8.0	7.7	7.4	7.1	6.8	6.5	6.2	5.9	5.6	5.3	5.0
		12.6	12.3	12.0	11.7	11.4	11.0	10.7	10.4	10.1	9.8	9.5	9.2	8.9	8.6	8.3	8.0	7.7	7.4	7.1	6.8	6.5	6.2	5.9	5.6	5.3	5.0	4.7	4.4	4.1	3.8
			11.6	11.3	11.0	10.7	10.4	10.1	9.8	9.5	9.2	8.9	8.6	8.3	8.0	7.7	7.4	7.1	6.8	6.5	6.2	5.9	5.6	5.3	5.0	4.7	4.4	4.1	3.8	3.5	3.2
				10.4	10.1	9.8	9.5	9.2	8.8	8.5	8.2	7.9	7.6	7.3	7.0	6.7	6.4	6.1	5.8	5.5	5.2	4.9	4.6	4.3	4.0	3.7	3.4	3.1	2.8	2.5	2.2
					9.3	8.9	8.6	8.3	8.0	7.8	7.5	7.2	6.9	6.6	6.3	6.0	5.7	5.4	5.1	4.8	4.5	4.2	3.9	3.6	3.3	3.0	2.7	2.4	2.1	1.8	1.5
						8.2	7.9	7.6	7.3	7.0	6.7	6.4	6.1	5.8	5.5	5.2	4.9	4.6	4.3	4.0	3.7	3.4	3.1	2.8	2.5	2.2	1.9	1.6	1.3	1.0	0.7
							7.5	7.2	6.9	6.6	6.3	6.0	5.7	5.4	5.1	4.8	4.5	4.2	3.9	3.6	3.3	3.0	2.7	2.4	2.1	1.8	1.5	1.2	0.9	0.6	0.3
								6.5	6.2	5.9	5.6	5.3	5.0	4.7	4.4	4.1	3.8	3.5	3.2	2.9	2.6	2.3	2.0	1.7	1.4	1.1	0.8	0.5	0.2	0.0	0.0
									5.6	5.2	4.9	4.6	4.3	4.0	3.7	3.4	3.1	2.8	2.5	2.2	1.9	1.6	1.3	1.0	0.7	0.4	0.1	0.0	0.0	0.0	0.0
										4.7	4.3	4.0	3.7	3.4	3.1	2.8	2.5	2.2	1.9	1.6	1.3	1.0	0.7	0.4	0.1	0.0	0.0	0.0	0.0	0.0	0.0
											4.1	3.8	3.5	3.2	2.9	2.6	2.3	2.0	1.7	1.4	1.1	0.8	0.5	0.2	0.0	0.0	0.0	0.0	0.0	0.0	0.0
												3.3	3.0	2.7	2.4	2.1	1.8	1.5	1.2	0.9	0.6	0.3	0.0	0.0	0.0	0.0	0.0	0.0	0.0	0.0	0.0



辅助臂工况作业范围

Working Range (Runner Duty)



工作幅度 (m)
Working Radius(m)

重型加长主臂工况额定起重能力表

Rated Lifting Capacity Load Chart (Heavy Lengthening Boom Duty)



73.4m-91.4m



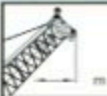

360°



88.5t



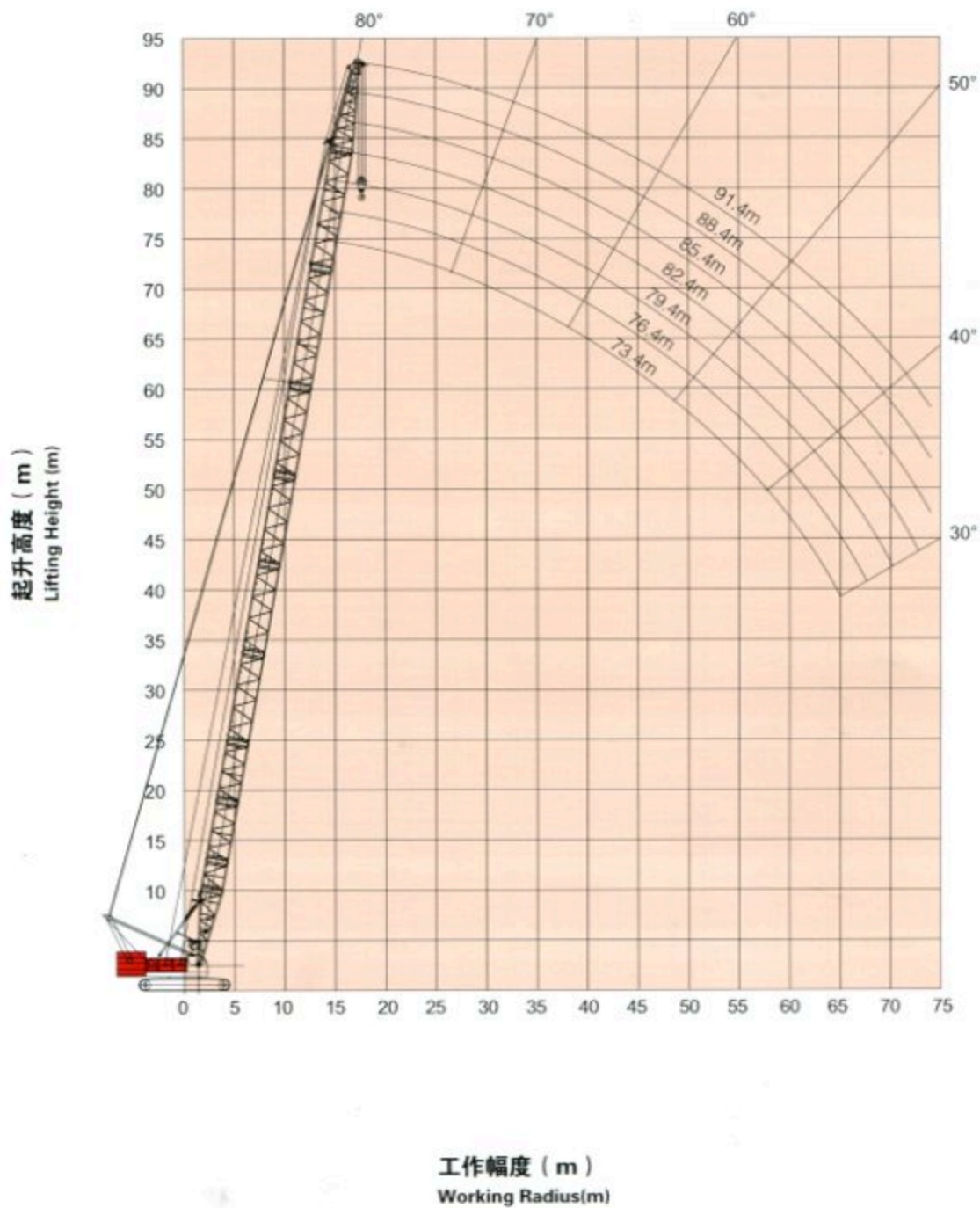
24t

 m	73.4	76.4	79.4	82.4	85.4	88.4	91.4	 m
14.0	14.5/54.9	15.1/50.5	15.6/44.8					14.0
16.0	49.30	48.30	44.30	16.1/40.9	16.1/40.9	17.2/33.9	17.7/30.7	16.0
18.0	43.80	42.40	41.40	38.80	38.80	33.10	30.40	18.0
20.0	38.60	37.70	36.80	36.10	36.10	31.10	28.50	20.0
22.0	34.70	33.80	33.00	32.40	32.40	29.30	26.80	22.0
24.0	31.30	30.50	29.80	29.20	29.20	27.50	25.00	24.0
26.0	28.80	27.70	27.00	26.50	26.50	25.20	23.40	26.0
28.0	25.90	25.30	24.70	24.10	24.10	22.90	21.80	28.0
30.0	23.80	23.20	22.60	22.00	22.00	20.90	20.30	30.0
32.0	21.90	21.30	20.70	20.20	20.20	19.10	18.50	32.0
34.0	20.30	19.70	19.10	18.60	18.60	17.50	17.00	34.0
36.0	18.80	18.20	17.60	17.10	17.10	16.10	15.60	36.0
38.0	17.10	16.80	16.30	15.80	15.80	14.90	14.30	38.0
40.0	15.90	15.50	15.10	14.70	14.70	13.70	13.20	40.0
42.0	14.50	14.20	13.90	13.60	13.60	12.70	12.10	42.0
44.0	13.40	13.10	12.80	12.60	12.60	11.70	11.20	44.0
46.0	12.40	12.10	11.80	11.50	11.50	10.80	10.30	46.0
48.0	11.60	11.20	10.80	10.60	10.60	10.00	9.50	48.0
50.0	10.50	10.30	10.00	9.80	9.80	9.20	8.50	50.0
52.0	9.80	9.60	9.20	9.00	9.00	8.40	7.60	52.0
54.0	9.10	8.80	8.50	8.30	8.30	7.70	6.70	54.0
56.0	8.60	8.20	7.80	7.60	7.60	7.10	5.90	56.0
58.0	7.80	7.60	7.20	7.00	7.00	6.40	5.10	58.0
60.0	7.30	7.00	6.70	6.40	6.40	5.90	4.40	60.0
62.0	6.70	6.50	6.10	5.90	5.90	5.20	3.70	62.0
64.0	6.20	6.00	5.60	5.40	5.40	4.50	3.00	64.0
66.0	65.3/5.8	5.50	5.20	4.90	4.90	3.80	2.30	66.0
68.0		67.8/5.1	4.70	4.50	4.50	3.10	1.70	68.0
70.0			4.30	4.10	4.10	2.50		70.0
72.0			70.4/4.2	3.70	3.70	1.90		72.0
74.0				3.50	3.50			74.0



重型加长主臂工况作业范围

Working Range (Heavy Lengthening Boom Duty)



重轻混合主臂工况额定起重能力表

Rated Lifting Capacity Load Chart (Heavy-light Boom Combination Duty)



75.8m-90.8m





360°



88.5t



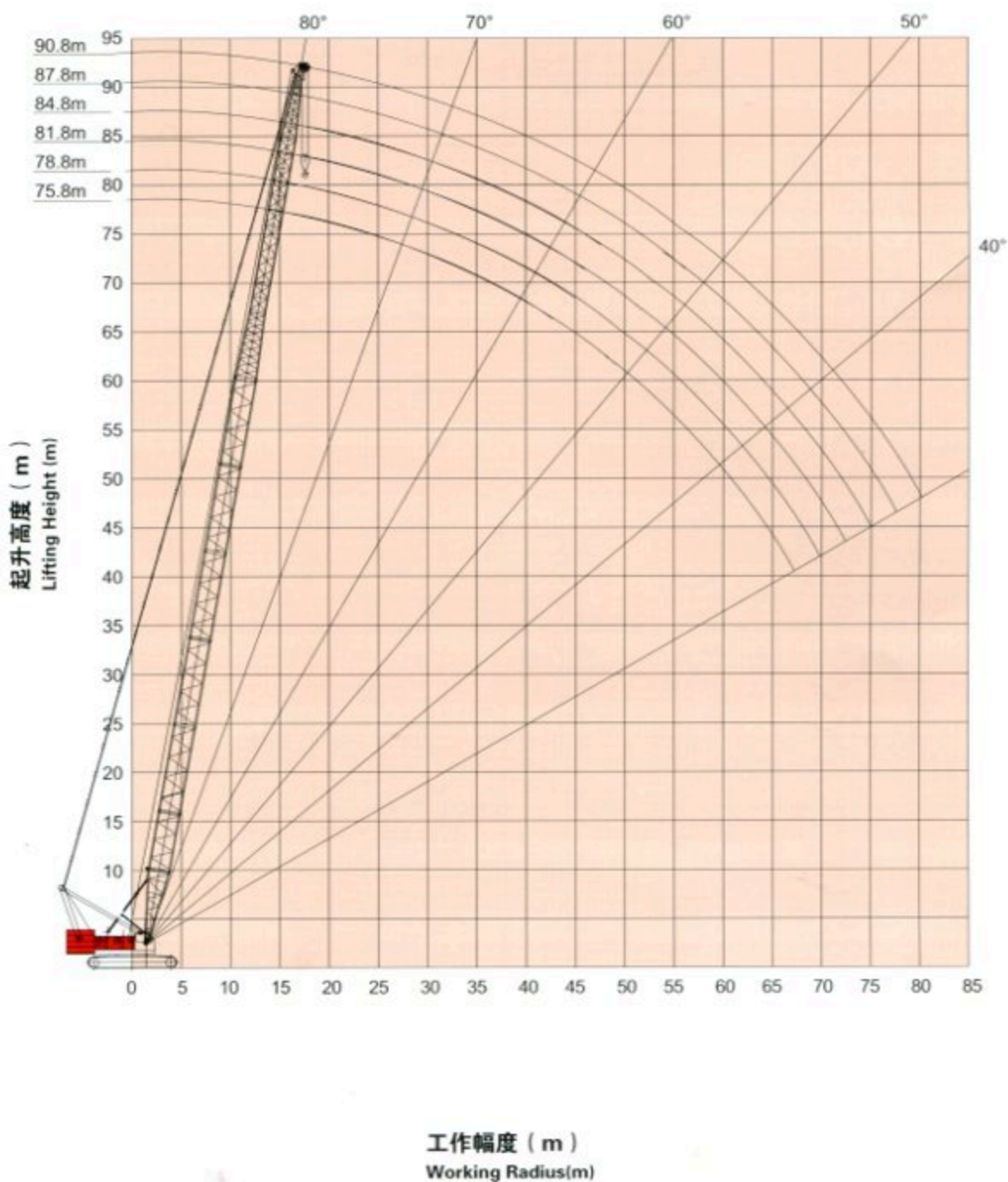
24t

 m	75.8	78.8	81.8	84.8	87.7	90.8	 m
14.0	31.5/15.0	29.1/15.5					14.0
16.0	31.1	28.9	25.8	22.9/16.6	20.0/17.1	17.6/17.6	16.0
18.0	30.4	28.3	25.4	22.5	19.7	17.4	18.0
20.0	29.7	27.7	24.6	21.9	19.0	16.7	20.0
22.0	27.7	27.0	24.0	21.3	18.2	15.8	22.0
24.0	25.2	24.6	23.4	20.6	17.4	15.2	24.0
26.0	23.0	22.5	22.0	20.0	16.7	14.8	26.0
28.0	21.1	20.6	20.2	19.4	15.9	14.3	28.0
30.0	19.4	19.0	18.6	18.1	15.2	13.7	30.0
32.0	17.9	17.5	17.1	16.7	14.6	13.1	32.0
34.0	16.6	16.2	15.9	15.4	13.9	12.5	34.0
36.0	15.4	15.1	14.7	14.3	13.3	12.0	36.0
38.0	14.3	14.0	13.7	13.3	12.7	11.5	38.0
40.0	13.3	13.0	12.7	12.4	12.1	10.9	40.0
42.0	12.4	12.2	11.9	11.5	11.2	10.4	42.0
44.0	11.6	11.4	11.1	10.7	10.5	9.9	44.0
46.0	10.9	10.6	10.4	10.0	9.8	9.4	46.0
48.0	10.2	10.0	9.7	9.4	9.1	8.8	48.0
50.0	9.6	9.3	9.1	8.8	8.5	8.2	50.0
52.0	9.0	8.8	8.5	8.2	8.0	7.6	52.0
54.0	8.5	8.2	8.0	7.7	7.5	7.1	54.0
56.0	8.0	7.7	7.5	7.2	7.0	6.7	56.0
58.0	7.5	7.3	7.1	6.8	6.5	6.2	58.0
60.0	7.1	6.9	6.6	6.3	6.1	5.8	60.0
62.0	6.7	6.5	6.2	5.9	5.7	5.4	62.0
64.0	6.3	6.1	5.9	5.6	5.4	5.1	64.0
66.0	5.8	5.7	5.5	5.2	5.0	4.7	66.0
68.0	5.5	5.3	5.2	4.9	4.7	4.4	68.0
70.0		4.9	4.8	4.6	4.4	4.1	70.0
72.0			4.5	4.2	4.1	3.8	72.0
74.0			4.4	3.9	3.8	3.5	74.0
76.0				3.7	3.5	3.3	76.0
78.0					3.2	3.0	78.0
80.0						2.6	80.0



重轻混合主臂工况作业范围

Working Range (Heavy-light Boom Combination Duty)



固定副臂工况额定起重能力表

Rated Lifting Capacity Load Chart (Fixed Jib Duty)



45.2m-69.2m



10°, 30°
18m-36



360°



68.5t



24t

m	45.2								m
	18.0		24.0		30.0		36.0		
	10°	30°	10°	30°	10°	30°	10°	30°	
14.0									14.0
18.0	18.60		14.1/19.2						18.0
22.0	18.00	16.40	13.80		10.50		7.5/22.4		22.0
26.0	17.50	16.10	13.30	12.10	10.20		7.30		26.0
30.0	17.00	15.70	12.90	11.80	9.90	9.00	7.10		30.0
34.0	16.60	15.30	12.60	11.60	9.60	8.70	6.90	6.10	34.0
38.0	16.20	14.90	12.20	11.40	9.30	8.50	6.70	5.70	38.0
42.0	15.80	14.50	11.90	11.20	9.10	8.40	6.50	5.40	42.0
46.0	13.80	14.10	11.60	11.00	8.80	8.20	6.20	5.10	46.0
50.0	11.90	12.30	11.40	10.80	8.60	8.10	5.80	4.80	50.0
54.0	10.30	10.60	10.70	10.60	8.40	7.90	5.50	4.60	54.0
58.0	9.0/57.7	9.10	9.30	9.70	8.20	7.70	5.20	4.40	58.0
62.0			8.10	8.40	8.00	7.50	4.90	4.20	62.0
66.0					7.30	7.30	4.60	4.00	66.0
70.0						6.60	4.30	3.90	70.0
74.0							4.10	3.90	74.0
78.0									78.0
82.0									82.0
86.0									86.0
m	48.2								m
	18.0		24.0		30.0		36.0		
	10°	30°	10°	30°	10°	30°	10°	30°	
14.0									14.0
18.0	18.60		14.1/19.7						18.0
22.0	18.00	16.3/22.3	13.80		10.50		7.4/23.5		22.0
26.0	17.50	16.10	13.30	12.10	10.20		7.30		26.0
30.0	17.00	15.70	12.90	11.80	9.90	9.00	7.10		30.0
34.0	16.60	15.30	12.60	11.60	9.60	8.70	6.90	6.10	34.0
38.0	16.20	14.90	12.20	11.40	9.30	8.50	6.70	5.70	38.0
42.0	15.70	14.50	11.90	11.20	9.10	8.40	6.50	5.40	42.0
46.0	13.50	14.10	11.60	11.00	8.80	8.20	6.20	5.10	46.0
50.0	11.60	12.10	11.40	10.80	8.60	8.10	5.80	4.80	50.0
54.0	10.00	10.40	10.30	10.60	8.40	7.90	5.50	4.60	54.0
58.0	8.60	8.90	9.00	9.40	8.20	7.70	5.20	4.40	58.0
62.0		7.8/61.2	7.80	8.10	8.00	7.50	4.90	4.20	62.0
66.0			6.70	6.90	7.00	7.20	4.60	4.00	66.0
70.0					6.00	6.40	4.30	3.90	70.0
74.0						5.6/73.2	4.10	3.90	74.0
78.0							3.9/77.0	3.70	78.0
82.0									82.0
86.0									86.0
90.0									90.0



固定副臂工况额定起重能力表

Rated Lifting Capacity Load Chart (Fixed Jib Duty)



45.2m-69.2m



10°, 30°
18m-36



360°



88.5t



24t

m	51.2								m
	18.0		24.0		30.0		36.0		
	10°	30°	10°	30°	10°	30°	10°	30°	
14.0									14.0
18.0	18.60								18.0
22.0	18.00	16.3/22.7	13.80		10.50		7.4/23.5		22.0
26.0	17.50	16.10	13.30	12.0/26.5	10.20		7.30		26.0
30.0	17.00	15.70	12.90	11.80	9.90	8.9/30.4	7.10		30.0
34.0	16.60	15.30	12.60	11.60	9.60	8.70	6.90	6.1/34.3	34.0
38.0	16.20	14.90	12.20	11.40	9.30	8.50	6.70	5.70	38.0
42.0	15.40	14.50	11.90	11.20	9.10	8.40	6.50	5.40	42.0
46.0	13.10	13.80	11.60	11.00	8.80	8.20	6.20	5.10	46.0
50.0	11.20	11.80	11.40	10.80	8.60	8.10	5.80	4.80	50.0
54.0	9.60	10.10	10.00	10.60	8.40	7.90	5.50	4.60	54.0
58.0	8.30	8.60	8.60	9.20	8.20	7.70	5.20	4.40	58.0
62.0	7.10	7.30	7.40	7.90	7.70	7.50	4.90	4.20	62.0
66.0			6.40	6.70	6.60	7.20	4.60	4.00	66.0
70.0				5.60	5.70	6.10	4.30	3.90	70.0
74.0					4.90	5.10	4.10	3.90	74.0
78.0							3.90	3.70	78.0
82.0								3.50	82.0
86.0									86.0
m	54.2								m
	18.0		24.0		30.0		36.0		
	10°	30°	10°	30°	10°	30°	10°	30°	
14.0									14.0
18.0	18.60								18.0
22.0	18.00	16.2/23.6	13.80		10.50				22.0
26.0	17.50	16.10	13.30	12.0/27.0	10.20		7.30		26.0
30.0	17.00	15.70	12.90	11.80	9.90	8.9/31.0	7.10		30.0
34.0	16.60	15.30	12.60	11.60	9.60	8.70	6.90	6.0/34.8	34.0
38.0	16.20	14.90	12.20	11.40	9.30	8.50	6.70	5.70	38.0
42.0	15.00	14.50	11.90	11.20	9.10	8.40	6.50	5.40	42.0
46.0	12.80	13.50	11.60	11.00	8.80	8.20	6.20	5.10	46.0
50.0	10.90	11.50	11.30	10.80	8.60	8.10	5.80	4.80	50.0
54.0	9.30	9.80	9.70	10.40	8.40	7.90	5.50	4.60	54.0
58.0	7.90	8.30	8.30	8.90	8.20	7.70	5.20	4.40	58.0
62.0	6.80	7.00	7.10	7.60	7.40	7.50	4.90	4.20	62.0
66.0	5.8/65.4	5.90	6.10	6.40	6.30	6.90	4.60	4.00	66.0
70.0			5.10	5.40	5.40	5.90	4.30	3.90	70.0
74.0				4.7/72.5	4.60	4.90	4.10	3.90	74.0
78.0					4.1/76.6	4.00	4.00	4.40	78.0
82.0							3.40	3.60	82.0
86.0								3.2/84.5	86.0
90.0									90.0

固定副臂工况额定起重能力表

Rated Lifting Capacity Load Chart (Fixed Jib Duty)



45.2m-69.2m



10°, 30°
18m-36



360°



88.5t



24t

m	57.2								m
	18.0		24.0		30.0		36.0		
	10°	30°	10°	30°	10°	30°	10°	30°	
14.0									14.0
18.0	18.6/18.4								18.0
22.0	18.00	16.2/23.7	13.80		10.4/22.6				22.0
26.0	17.50	16.10	13.30	11.9/27.6	10.20		7.30		26.0
30.0	17.00	15.70	12.90	11.80	9.90	8.9/31.4	7.10		30.0
34.0	16.60	15.30	12.60	11.60	9.60	8.70	6.90	6.0/35.4	34.0
38.0	16.20	14.90	12.20	11.40	9.30	8.50	6.70	5.70	38.0
42.0	14.70	14.50	11.90	11.20	9.10	8.40	6.50	5.40	42.0
46.0	12.40	13.20	11.60	11.00	8.80	8.20	6.20	5.10	46.0
50.0	10.50	11.20	10.90	10.80	8.60	8.10	5.80	4.80	50.0
54.0	9.00	9.50	9.30	10.10	8.40	7.90	5.50	4.60	54.0
58.0	7.60	8.00	7.90	8.60	8.20	7.70	5.20	4.40	58.0
62.0	6.40	6.80	6.80	7.30	7.00	7.50	4.90	4.20	62.0
66.0	5.40	5.60	5.70	6.20	6.00	6.60	4.60	4.00	66.0
70.0		4.8/69.2	4.80	5.10	5.10	5.60	4.30	3.90	70.0
74.0			4.1/73.6	4.20	4.20	4.70	4.10	3.80	74.0
78.0					3.50	3.80	3.70	3.70	78.0
82.0						3.2/81.1	3.10	3.40	82.0
86.0							2.9/84.8	2.80	86.0
m	60.2								m
	18.0		24.0		30.0		36.0		
	10°	30°	10°	30°	10°	30°	10°	30°	
14.0									14.0
18.0	18.4/19.0								18.0
22.0	18.00		13.80		10.4/23.0				22.0
26.0	17.50	16.10	13.30		10.20		7.30		26.0
30.0	17.00	15.70	12.90	11.80	9.90		7.10		30.0
34.0	16.60	15.30	12.60	11.60	9.60	8.70	6.90		34.0
38.0	16.20	14.90	12.20	11.40	9.30	8.50	6.70	5.70	38.0
42.0	14.40	14.50	11.90	11.20	9.10	8.40	6.50	5.40	42.0
46.0	12.10	12.90	11.60	11.00	8.80	8.20	6.20	5.10	46.0
50.0	10.20	10.90	10.60	10.80	8.60	8.10	5.80	4.80	50.0
54.0	8.60	9.20	9.00	9.90	8.40	7.90	5.50	4.60	54.0
58.0	7.30	7.80	7.60	8.40	7.90	7.70	5.20	4.40	58.0
62.0	6.10	6.50	6.40	7.00	6.70	7.50	4.90	4.20	62.0
66.0	5.00	5.30	5.40	5.90	5.70	6.40	4.60	4.00	66.0
70.0	4.10	4.30	4.50	4.90	4.70	5.30	4.30	3.90	70.0
74.0			3.70	3.90	3.90	4.40	4.10	3.90	74.0
78.0				3.20	3.30	3.60	3.40	3.70	78.0
82.0					2.70	2.90	2.90	3.50	82.0
86.0							2.40	3.30	86.0
90.0								2.00	90.0



固定副臂工况额定起重能力表

Rated Lifting Capacity Load Chart (Fixed Jib Duty)



45.2m-69.2m



10°, 30°
18m-36



360°



88.5t



24t

m	63.2								m
	18.0		24.0		30.0		36.0		
	10°	30°	10°	30°	10°	30°	10°	30°	
14.0									14.0
18.0	18.4/19.4								18.0
22.0	18.00		13.80		10.3/23.6				22.0
26.0	17.50	16.10	13.30		10.20		7.30		26.0
30.0	17.00	15.70	12.90	11.80	9.90		7.10		30.0
34.0	16.60	15.30	12.60	11.60	9.60	8.70	6.90		34.0
38.0	16.20	14.90	12.20	11.40	9.30	8.50	6.70	5.70	38.0
42.0	14.00	14.50	11.90	11.20	9.10	8.40	6.50	5.40	42.0
46.0	11.80	12.70	11.60	11.00	8.80	8.20	6.20	5.10	46.0
50.0	9.90	10.60	10.30	10.80	8.60	8.10	5.80	4.80	50.0
54.0	8.30	8.90	8.60	9.60	8.40	7.90	5.50	4.60	54.0
58.0	6.90	7.50	7.30	8.10	7.60	7.70	5.20	4.40	58.0
62.0	5.70	6.20	6.10	6.80	6.40	7.30	4.90	4.20	62.0
66.0	4.70	5.00	5.00	5.60	5.30	6.10	4.60	4.00	66.0
70.0	3.80	4.00	4.10	4.60	4.40	5.10	4.30	3.90	70.0
74.0	3.3/73.2	3.30	3.40	3.70	3.60	4.10	3.80	3.90	74.0
78.0			2.80	3.00	3.00	3.40	3.20	3.70	78.0
82.0					2.50	2.70	2.60	3.00	82.0
86.0						2.10	2.10	2.40	86.0
m	66.2								m
	18.0		24.0		30.0		36.0		
	10°	30°	10°	30°	10°	30°	10°	30°	
14.0									14.0
18.0									18.0
22.0	18.00		13.80						22.0
26.0	17.50	16.10	13.30		10.20		7.30		26.0
30.0	17.00	15.70	12.90	11.80	9.90		7.10		30.0
34.0	16.60	15.30	12.60	11.60	9.60	8.70	6.90		34.0
38.0	16.20	14.90	12.20	11.40	9.30	8.50	6.70	5.70	38.0
42.0	13.70	14.50	11.90	11.20	9.10	8.40	6.50	5.40	42.0
46.0	11.40	12.40	11.60	11.00	8.80	8.20	6.20	5.10	46.0
50.0	9.50	10.40	9.90	10.80	8.60	8.10	5.80	4.80	50.0
54.0	7.90	8.60	8.30	9.30	8.40	7.90	5.50	4.60	54.0
58.0	6.60	7.20	6.90	7.80	7.20	7.70	5.20	4.40	58.0
62.0	5.40	5.90	5.70	6.50	6.00	7.00	4.90	4.20	62.0
66.0	4.30	4.80	4.70	5.30	5.00	5.90	4.60	4.00	66.0
70.0	3.60	3.80	3.80	4.30	4.10	4.80	4.30	3.90	70.0
74.0	2.90	3.10	3.20	3.50	3.40	3.90	3.60	3.90	74.0
78.0		2.5/77.0	2.50	2.80	2.80	3.20	2.90	3.50	78.0
82.0			2.2/81.4	2.10	2.20	2.50	2.40	2.80	82.0
86.0								2.20	86.0
90.0									90.0

固定副臂工况额定起重能力表

Rated Lifting Capacity Load Chart (Fixed Jib Duty)



45.2m-69.2m



10°, 30°
18m-36



360°



88.5t



24t

m	69.2								m
	18.0		24.0		30.0		36.0		
	10°	30°	10°	30°	10°	30°	10°	30°	
14.00									14.00
18.00									18.00
22.00	18.00		13.8/22.8						22.00
26.00	17.50	16.10	13.30						26.00
30.00	17.00	15.70	12.90	11.80					30.00
34.00	16.60	15.30	12.60	11.60					34.00
38.00	16.20	14.90	12.20	11.40					38.00
42.00	13.40	14.50	11.90	11.20					42.00
46.00	11.10	12.10	11.50	11.00					46.00
50.00	9.20	10.10	9.60	10.80					50.00
54.00	7.60	8.40	8.00	9.00					54.00
58.00	6.20	6.90	6.60	7.50					58.00
62.00	5.00	5.60	5.40	6.20					62.00
66.00	4.10	4.50	4.40	5.10					66.00
70.00	3.30	3.60	3.60	4.00					70.00
74.00	2.60	2.90	2.90	3.30					74.00
78.00	2.1/78.0	2.2/79.4	2.30	2.60					78.00
80.00				2.30					80.00



带固定副臂时主臂工况额定起重能力表

Rated Lifting Capacity Load Chart
(Boom Duty With Fixed Jib)



45.2m-69.2m



10°, 30°
18m-36



360°



88.5t



24t

固定副臂长度 Fixed jib length	18m									
	45.2		51.2		57.2		63.2		69.2	
	10°	30°	10°	30°	10°	30°	10°	30°	10°	30°
10.0	86.9	85.6	74.3/11.1	73/11.1						
12.0	70.7	69.4	68.0	66.7	65.3/12.1	64/12.1	56.4/13.2	55.9/13.2		
14.0	58.0	56.7	56.0	54.7	53.8	52.5	51.7	50.4	47.5/14.2	46.2/14.2
15.0	53.1	51.8	51.2	49.9	49.3	48.0	47.5	46.2	44.4	43.1
16.0	48.9	47.6	47.6	46.3	46.2	44.9	44.6	43.3	41.7	40.4
18.0	41.8	40.5	40.6	39.3	39.4	38.1	38.0	36.7	36.8	35.5
20.0	36.2	34.9	35.1	33.8	34.0	32.7	32.8	31.5	31.7	30.4
22.0	31.6	30.3	30.6	29.3	29.6	28.3	28.6	27.3	27.5	26.2
24.0	27.8	26.5	26.9	25.6	26.0	24.7	25.0	23.7	24.0	22.7
26.0	24.3	23.0	23.7	22.4	23.0	21.7	22.0	20.7	21.1	19.8
28.0	21.3	20.0	20.8	19.5	20.2	18.9	19.4	18.1	18.6	17.3
30.0	18.8	17.5	18.2	16.9	17.7	16.4	17.1	15.8	16.3	15.0
32.0	16.7	15.4	16.1	14.8	15.4	14.1	14.8	13.5	14.3	13.0
34.0	14.7	13.4	14.1	12.8	13.6	12.3	13.0	11.7	12.3	11.0
36.0	13.1	11.8	12.5	11.2	11.9	10.6	11.3	10.0	10.7	9.4
38.0	11.6	10.3	11.0	9.7	10.4	9.1	9.8	8.5	9.2	7.9
40.0	10.3	9.0	9.6	8.3	9.1	7.8	8.5	7.2	7.8	6.5
42.0			8.5	7.2	7.8	6.5	7.2	5.9	6.6	5.3
44.0			7.4	6.1	6.8	5.5	6.2	4.9	5.5	
46.0			6.4	5.1	5.8		5.1		4.8	
48.0					4.9					
倍率	7	7	6	6	5	5	5	5	4	4

带固定副臂时主臂工况额定起重能力表

Rated Lifting Capacity Load Chart (Boom Duty With Fixed Jib)



45.2m-69.2m



10°, 30°
18m-36



360°



88.5t



24t

固定副臂长度 Fixed jib length	24m									
	45.2		51.2		57.2		63.2		69.2	
	10°	30°	10°	30°	10°	30°	10°	30°	10°	30°
10.0	85.4	83.4	72.8/11.1	70.8/11.1						
12.0	69.2	67.2	66.5	64.5	63.8/12.1	61.8/12.1	54.9/13.2	52.9/13.2		
14.0	56.5	54.5	54.5	52.5	52.3	50.3	50.2	48.2	46/14.2	44/14.2
15.0	51.6	49.6	49.7	47.7	47.8	45.8	46.0	44.0	42.9	40.9
16.0	47.4	45.4	46.1	44.1	44.7	42.7	43.1	41.1	40.2	38.2
18.0	40.3	38.3	39.1	37.1	37.9	35.9	36.5	34.5	35.3	33.3
20.0	34.7	32.7	33.6	31.6	32.5	30.5	31.3	29.3	30.2	28.2
22.0	30.1	28.1	29.1	27.1	28.1	26.1	27.1	25.1	26.0	24.0
24.0	26.3	24.3	25.4	23.4	24.5	22.5	23.5	21.5	22.5	20.5
26.0	22.8	20.8	22.2	20.2	21.5	19.5	20.5	18.5	19.6	17.6
28.0	19.8	17.8	19.3	17.3	18.7	16.7	17.9	15.9	17.1	15.1
30.0	17.3	15.3	16.7	14.7	16.2	14.2	15.6	13.6	14.8	12.8
32.0	15.2	13.2	14.6	12.6	13.9	11.9	13.3	11.3	12.8	10.8
34.0	13.2	11.2	12.6	10.6	12.1	10.1	11.5	9.5	10.8	8.8
36.0	11.6	9.6	11.0	9.0	10.4	8.4	9.8	7.8	9.2	7.2
38.0	10.1	8.1	9.5	7.5	8.9	6.9	8.3	6.3	7.7	5.7
40.0	8.8	6.8	8.1	6.1	7.6	5.6	7.0	5.0	6.3	
42.0			7.0	5.0	6.3		5.7		5.1	
44.0			5.9		5.3		4.7			
46.0			4.9							
48.0										
倍率	7	7	6	6	5	5	5	4	4	4



带固定副臂时主臂工况额定起重能力表

Rated Lifting Capacity Load Chart
(Boom Duty With Fixed Jib)



45.2m-69.2m



10°, 30°
18m-36



360°



88.5t



24t

固定副臂长度 Fixed jib length	30m									
	45.2		51.2		57.2		63.2		69.2	
	10°	30°	10°	30°	10°	30°	10°	30°	10°	30°
10.0	83.7	80.9	71.1/11.1	68.3/11.1						
12.0	67.5	64.7	64.8	62.0	62.1/12.1	59.3/12.1	53.2/13.2	50.4/13.2	48.6/13.7	45.8/13.7
14.0	54.8	52.0	52.8	50.0	50.6	47.8	48.5	45.7	47.4	44.6
15.0	49.9	47.1	48.0	45.2	46.1	43.3	44.3	41.5	42.3	39.5
16.0	45.7	42.9	44.4	41.6	43.0	40.2	41.4	38.6	40.0	37.2
18.0	38.6	35.8	37.4	34.6	36.2	33.4	34.8	32.0	34.2	31.4
20.0	33.0	30.2	31.9	29.1	30.8	28.0	29.6	26.8	29.1	26.3
22.0	28.4	25.6	27.4	24.6	26.4	23.6	25.4	22.6	24.8	22.0
24.0	24.6	21.8	23.7	20.9	22.8	20.0	21.8	19.0	21.3	18.5
26.0	21.1	18.3	20.5	17.7	19.8	17.0	18.8	16.0	18.3	15.5
28.0	18.1	15.3	17.6	14.8	17.0	14.2	16.2	13.4	15.7	12.9
30.0	15.6	12.8	15.0	12.2	14.5	11.7	13.9	11.1	13.6	10.8
32.0	13.5	10.7	12.9	10.1	12.2	9.4	11.6	8.8	11.4	8.6
34.0	11.5	8.7	10.9	8.1	10.4	7.6	9.8	7.0	9.5	6.7
36.0	9.9	7.1	9.3	6.5	8.7	5.9	8.1	5.3	7.8	5.0
38.0	8.4	5.6	7.8	5.0	7.2		6.6		6.3	
40.0	7.1		6.4		5.9		5.3		5.0	
42.0			5.3		4.6					
倍率	7	6	6	6	5	5	4	4	4	4

带固定副臂时主臂工况额定起重能力表

Rated Lifting Capacity Load Chart (Boom Duty With Fixed Jib)



45.2m-69.2m



10°, 30°
18m-36



360°



88.5t



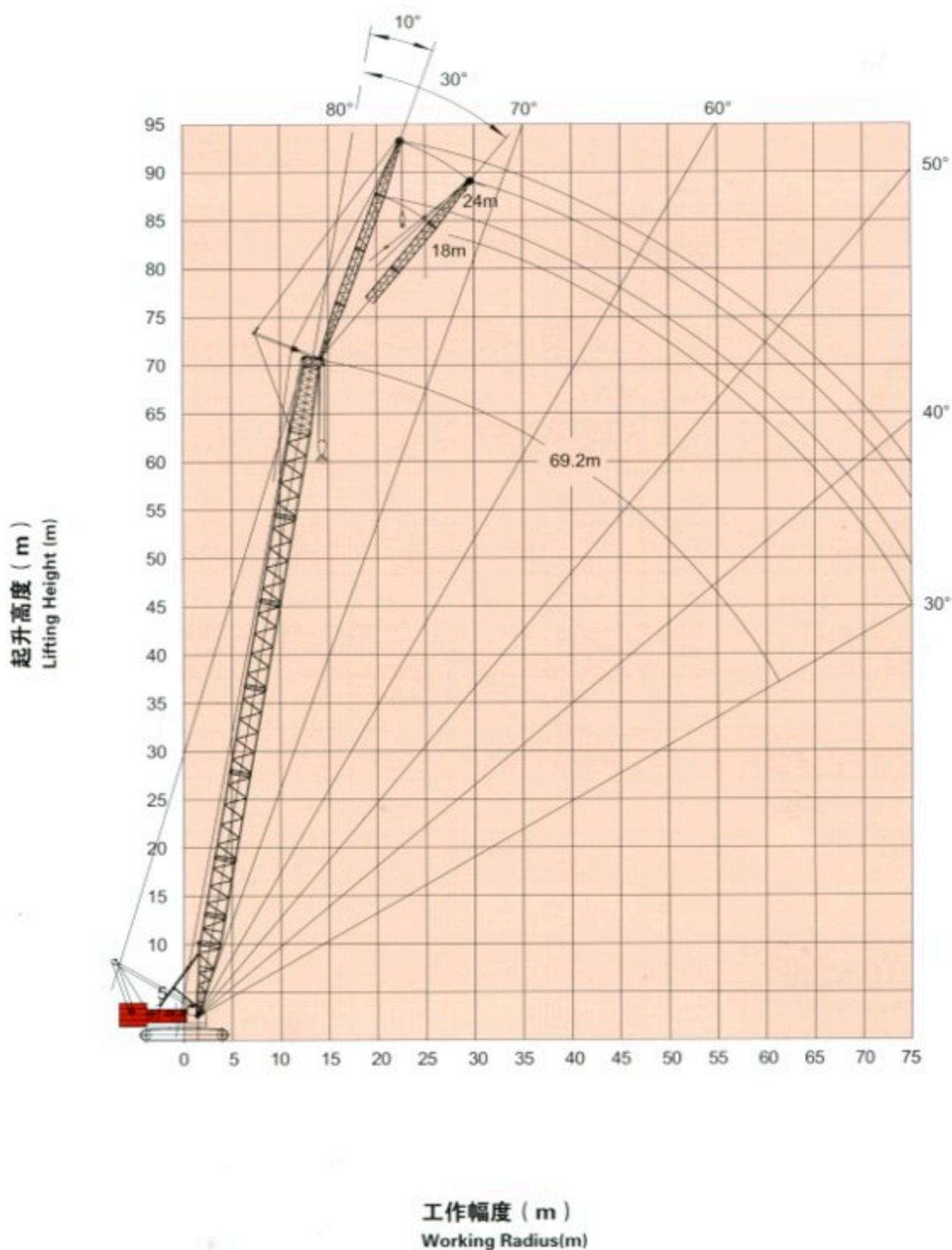
24t

固定副臂长度 Fixed jib length	36m									
	45.2		51.2		57.2		63.2		69.2	
	10°	30°	10°	30°	10°	30°	10°	30°	10°	30°
10.0	81.9	78.2	69.3/11.1	65.6/11.1						
12.0	65.7	62.0	63.0	59.3	60.3/12.1	56.6/12.1	51.4/13.2	47.7/13.2	46.8/13.7	43.1/13.7
14.0	53.0	49.3	51.0	47.3	48.8	45.1	46.7	43.0	45.6	41.9
15.0	48.1	44.4	46.2	42.5	44.3	40.6	42.5	38.8	40.5	36.8
16.0	43.9	40.2	42.6	38.9	41.2	37.5	39.6	35.9	38.2	34.5
18.0	36.8	33.1	35.6	31.9	34.4	30.7	33.0	29.3	32.4	28.7
20.0	31.2	27.5	30.1	26.4	29.0	25.3	27.8	24.1	27.3	23.6
22.0	26.6	22.9	25.6	21.9	24.6	20.9	23.6	19.9	23.0	19.3
24.0	22.8	19.1	21.9	18.2	21.0	17.3	20.0	16.3	19.5	15.8
26.0	19.3	15.6	18.7	15.0	18.0	14.3	17.0	13.3	16.5	12.8
28.0	16.3	12.6	15.8	12.1	15.2	11.5	14.4	10.7	13.9	10.2
30.0	13.8	10.1	13.2	9.5	12.7	9.0	12.1	8.4	11.8	8.1
32.0	11.7	8.0	11.1	7.4	10.4	6.7	9.8	6.1	9.6	5.9
34.0	9.7	6.0	9.1	5.4	8.6	4.9	8.0		7.7	
36.0	8.1		7.5		6.9		6.3		6.0	
38.0	6.6		6.0		5.4		4.8			
40.0	5.3		4.6							
倍率	7	6	6	5	5	5	4	4	4	4



固定副臂工况作业范围

Working Range (Fixed Jib)



塔式工况额定起重能力表

Rated Lifting Capacity Load Chart (Luffing Jib Duty)



65°-85°
36.2m-60.2m



22m-61m



360°



68.5t



24t

Jib Length (m)	36.2m																					
	22.0m			25.0m			28.0m			31.0m			34.0m			37.0m			40.0m			
	85°	75°	65°	85°	75°	65°	85°	75°	65°	85°	75°	65°	85°	75°	65°	85°	75°	65°	85°	75°	65°	
14.0m	57.8																					
16.0m	53.9			52.6			51.6															
18.0m	50.7			49.3			48.3			47.1			45.9									
20.0m	47.9			46.6			45.6			44.3			43.2			40.4				36.9		
22.0m	40.9			41.3			42.1			41.9			40.8			37.6				34.3		
24.0m	35.4	36.0		35.9			36.7			36.4			36.3			35.0				31.9		
26.0m		32.6		31.6	32.3		32.4	32.4		32.2			32.0			32.0				29.7		
28.0m		29.8		28.0	29.5		28.8	29.6		28.7	29.2		28.5			28.5				27.7		
30.0m		27.3		27.1			25.9	27.2		25.8	26.8		25.6	26.5		25.7				25.6		
34.0m			21.4	23.2	21.1		23.3			23.0			21.1	22.6		21.1	22.5			21.1	22.3	
38.0m					18.3			18.4		20.0	18.1		19.7			17.7	19.5			17.7	19.4	
42.0m								16.2			15.9		17.3	15.5		17.2	15.4			17.0		
46.0m														13.8						13.6	15.1	13.5
50.0m																				12.2		12.0
Jib Length (m)	36.2m																					
	43.0m			46.0m			49.0m			52.0m			55.0m			58.0m			61.0m			
	85°	75°	65°	85°	75°	65°	85°	75°	65°	85°	75°	65°	85°	75°	65°	85°	75°	65°	85°	75°	65°	
20.0m																						
22.0m	31.1			26.2																		
24.0m	28.9			25.2			21.9			18.3												
26.0m	26.9			24.4			21.0			17.7			14.7			13.5						
28.0m	25.0			22.6			19.4			17.2			14.3			13.3				13.5		
30.0m	23.2			21.0			18.9			16.8			14.1			13.2				13.5		
34.0m	20.1	22.1		18.1			16.3			14.3			12.7			12.1				9.5		
38.0m	17.4	19.1		15.6	18.9		13.9	17.8		12.2	15.7		10.7			10.2				8.8		
42.0m	15.0	16.8		13.5	16.6		11.9	15.3		10.3	13.4		9.0	11.9		8.6	11.3			7.3		
46.0m		14.8	13.2	11.6	14.7		10.2	13.1		8.6	11.4		7.4	10.0		7.2	9.6			5.9	8.1	
50.0m		13.2	11.7		12.7	11.6		11.2	11.4	7.2	9.6		6.1	8.3		6.0	8.0			4.8	6.7	
54.0m			10.5		10.3		9.6	10.2		8.1	9.9	4.9	6.9	9.1	4.9	6.7				3.7	5.4	
58.0m					9.3			9.1		6.7	8.8		5.6	7.6		5.5	7.4	2.8	4.3	6.1		
62.0m											7.4			6.2		4.5	6.1			3.4	4.9	
66.0m														5.0			5.0			2.5	3.9	
70.0m																	4.0				2.9	



塔式工况额定起重能力表

Rated Lifting Capacity Load Chart (Luffing Jib Duty)



65°-85°
36.2m-60.2m



22m-61m



360°



88.5t



241

Jib Length (m)	39.2m																				
	22.0m			25.0m			28.0m			31.0m			34.0m			37.0m			40.0m		
	85°	75°	65°	85°	75°	65°	85°	75°	65°	85°	75°	65°	85°	75°	65°	85°	75°	65°	85°	75°	65°
14.0m	55.5																				
16.0m	51.7			50.4			49.4														
18.0m	48.6			47.2			46.2			45.0			43.9								
20.0m	45.9			44.5			43.6			42.3			41.2			40.2					37.2
22.0m	41.7			42.1			41.3			40.0			38.9			37.9					34.7
24.0m	36.1	35.5		36.5			37.3			37.1			36.9			35.3					32.2
26.0m		32.1		32.1	31.9		32.9			32.7			32.5			32.5					30.0
28.0m		29.3		28.4	29.1		29.3	29.1		29.1			28.9			29.0					27.9
30.0m		26.9			26.7		26.2	26.8		26.1	26.4		26.0	26.1		26.0					26.0
34.0m				20.8		22.8			23.0			22.6	21.3	22.3		21.4	22.1			21.4	22.0
38.0m				18.1			17.8			17.9	19.7			19.4		17.9	19.2			17.9	19.0
42.0m										15.8			15.4		17.0	15.1		16.9			16.7
46.0m												13.7			13.4				13.2		14.8 13.0
50.0m																			11.8		11.6
54.0m																					10.4
Jib Length (m)	39.2m																				
	43.0m			46.0m			49.0m			52.0m			55.0m			58.0m			61.0m		
	85°	75°	65°	85°	75°	65°	85°	75°	65°	85°	75°	65°	85°	75°	65°	85°	75°	65°	85°	75°	65°
22.0m	30.1			25.5																	
24.0m	28.2			24.5			22.2			18.5											
26.0m	27.1			23.6			20.3			17.9			14.9			13.7					
28.0m	25.2			22.8			19.6			17.4			14.5			13.5					13.5
30.0m	23.4			21.2			19.1			17.0			14.2			13.5					13.5
34.0m	20.3			18.3			16.4			14.5			12.9			12.2					9.6
38.0m	17.6	18.8		15.8	18.6		14.1	18.3		12.3			10.9			10.4					8.9
42.0m	15.1	16.5		13.6	16.3		12.0	15.7		10.4	13.8		9.1	12.3		8.7	11.6				7.4
46.0m		14.6		11.7	14.4		10.3	13.5		8.7	11.7		7.5	10.3		7.3	9.9			6.0	8.4
50.0m			13.0	11.3		12.9	11.1	8.7	11.6		7.3	9.9		6.2	8.6		6.0	8.3		4.8	7.0
54.0m				10.1		11.3	10.0		9.9	9.8		8.3	9.5	4.9	7.1		4.9	7.0		3.8	5.7
58.0m						9.0			8.8		6.9	8.5		5.8	8.1	3.9	5.7	7.8		2.8	4.5
62.0m									7.9			7.6		4.7	6.7		4.7	6.5		3.5	5.3
66.0m															5.4			5.4		2.6	4.2
70.0m																		4.3			3.2
74.0m																					2.3

塔式工况额定起重能力表

Rated Lifting Capacity Load Chart (Luffing Jib Duty)



65°-85°
36.2m-60.2m



22m-61m



360°



88.5t



24t

Jib Length (m)	42.2m																				
	22.0m			25.0m			28.0m			31.0m			34.0m			37.0m			40.0m		
	85°	75°	65°	85°	75°	65°	85°	75°	65°	85°	75°	65°	85°	75°	65°	85°	75°	65°	85°	75°	65°
14.0m	52.7																				
16.0m	48.9			47.7			46.8														
18.0m	45.7			44.4			43.4			42.2			42.0								
20.0m	42.6			41.3			40.4			39.2			38.0			37.0				36.7	
22.0m	40.1			38.7			37.9			36.6			35.5			34.5				33.6	
24.0m	36.7			36.6			35.7			34.5			33.3			32.4				31.5	
26.0m		31.7		32.6	31.4		33.4			32.6			31.5			30.6				29.7	
28.0m		28.9		28.9	28.6		29.7	28.7		29.5			29.4			28.9				28.1	
30.0m		26.6			26.3		26.6	26.4		26.5	26.0		26.3			26.4				26.3	
34.0m					22.5			22.6		21.6	22.3		21.6	21.9		21.6	21.7		21.6	21.6	
38.0m			17.6			17.3		19.7			19.4			19.0		18.1	18.9		18.1	18.7	
42.0m						15.2			15.3			14.9		16.7			16.6		15.4	16.4	
46.0m												13.3			12.9		14.7	12.7		14.6	12.6
50.0m															11.5			11.4			11.2
54.0m																					10.0
Jib Length (m)	42.2m																				
	43.0m			46.0m			49.0m			52.0m			55.0m			58.0m			61.0m		
	85°	75°	65°	85°	75°	65°	85°	75°	65°	85°	75°	65°	85°	75°	65°	85°	75°	65°	85°	75°	65°
22.0m	31.7			26.8																	
24.0m	29.3			25.7			21.2			18.7											
26.0m	27.4			24.8			20.5			18.1			15.1			13.8					
28.0m	25.5			23.1			19.8			17.6			14.7			13.6				13.5	
30.0m	23.7			21.4			19.3			17.2			13.4			13.5				13.5	
34.0m	20.5			18.5			16.6			14.6			13.0			12.3				9.7	
38.0m	17.8	18.4		15.9	18.3		14.2	18.1		12.4			11.0			10.5				9.0	
42.0m	15.3	16.2		13.7	16.0		12.2	15.8		10.5	14.3		9.2	12.7		8.8				7.5	
46.0m		14.3		11.8	14.1		10.4	13.9		8.8	12.1		7.6	10.7		7.4	10.2		6.1	8.7	
50.0m		12.8	10.9		12.6	10.7	8.8	11.9		7.4	10.3		6.2	8.9		6.1	8.6		4.9	7.2	
54.0m			9.8		11.3	9.6		10.2	9.4		8.6	9.1	5.0	7.4		5.0	7.2		3.9	5.9	
58.0m			8.8			8.6			8.4		7.2	8.2		6.1	8.0	4.0	6.0	8.2	2.9	4.8	
62.0m									7.6			7.3		4.9	7.1		4.9	6.9		3.7	5.6
66.0m												6.6			5.8			5.7		2.8	4.5
70.0m																		4.6			3.5
74.0m																					2.6



塔式工况额定起重能力表

Rated Lifting Capacity Load Chart (Luffing Jib Duty)



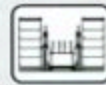
65°-85°
36.2m-60.2m



22m-61m



360°



88.5t



241

Jib Height (m)	45.2m																					
	22.0m			25.0m			28.0m			31.0m			34.0m			37.0m			40.0m			
	85°	75°	65°	85°	75°	65°	85°	75°	65°	85°	75°	65°	85°	75°	65°	85°	75°	65°	85°	75°	65°	
14.0m	49.9																					
16.0m	45.9			44.6			43.7															
18.0m	42.3			41.1			40.3			39.1												
20.0m	39.4			38.2			37.4			36.3			35.2			34.2						
22.0m	37.0			35.8			35.0			33.8			32.8			31.9				31.0		
24.0m	35.0			33.7			32.9			31.8			30.8			29.9				29.0		
26.0m	32.6	31.1		32.0			31.2			30.0			29.0			28.1				27.3		
28.0m		28.4		29.3	28.1		29.7			28.5			27.4			26.6				25.8		
30.0m		26.1			25.8		27.0	25.9		26.8	25.5		26.1			25.3				24.5		
34.0m					22.1			22.2		21.9	21.8		21.9	21.5		21.9	21.3			21.9		
38.0m			17.0			16.7		19.3			19.0			18.7		18.3	18.5			18.3	18.3	
42.0m						14.7			14.7		16.7	14.4		16.4			16.2			15.5	16.1	
46.0m									13.1			12.8			12.4		14.4	12.2			14.2	
50.0m															11.1			10.9			12.7	10.7
54.0m																	9.8					9.6
Jib Height (m)	45.2m																					
	43.0m			46.0m			49.0m			52.0m			55.0m			58.0m			61.0m			
	85°	75°	65°	85°	75°	65°	85°	75°	65°	85°	75°	65°	85°	75°	65°	85°	75°	65°	85°	75°	65°	
22.0m	29.4																					
24.0m	27.0			24.7			21.4															
26.0m	25.3			23.6			20.7			17.3			15.3									
28.0m	23.9			23.2			20.0			16.8			14.9			13.5				13.5		
30.0m	22.7			21.6			19.5			16.4			14.6			13.5				13.5		
34.0m	20.5			18.6			16.8			14.8			13.2			11.5				10.6		
38.0m	17.9	18.0		16.1	17.9		14.4			12.6			11.1			10.6				9.1		
42.0m	15.4	15.8		13.9	15.6		12.3	15.5		10.6	14.7		9.3	13.1		8.9				7.5		
46.0m		14.0		12.0	13.8		10.5	13.7		8.9	12.5		7.7	11.0		7.5	10.5			6.2	9.0	
50.0m		12.5	10.4		12.3		8.9	12.2		7.5	10.6		6.3	9.3		6.2	8.9			5.0	7.5	
54.0m			9.3		11.0	9.1		10.5	9.0		8.9		5.1	7.7		5.1	7.5			3.9	6.2	
58.0m				8.4		8.2		8.9	8.0		7.5	7.7		6.3	7.6	4.1	6.2			3.0	5.0	
62.0m						7.4			7.2			6.9		5.1	6.7		5.1	7.1			3.9	6.0
66.0m												6.2				6.0	4.1	6.1			3.0	4.8
70.0m															5.0			5.0				3.8
74.0m																						2.9

塔式工况额定起重能力表

Rated Lifting Capacity Load Chart (Luffing Jib Duty)



65°-85°
36.2m-60.2m



22m-61m



360°



68.5t



24t

m	48.2m																				
	22.0m			25.0m			28.0m			31.0m			34.0m			37.0m			40.0m		
	85°	75°	65°	85°	75°	65°	85°	75°	65°	85°	75°	65°	85°	75°	65°	85°	75°	65°	85°	75°	65°
14.0m																					
16.0m	48.9			47.6																	
18.0m	45.0			43.8			42.9			41.6											
20.0m	41.9			40.6			39.7			38.5			37.3			37.2					
22.0m	39.2			37.9			37.1			35.9			34.8			33.8			32.9		
24.0m	37.1			35.7			34.9			33.7			32.6			31.6			30.7		
26.0m	33.2	30.6		33.7			33.0			31.8			30.7			29.8			28.9		
28.0m		27.9		29.8	27.6		30.6			30.1			29.0			28.1			27.2		
30.0m		25.6			25.4		27.4	25.4		27.2			27.1			26.6			25.8		
34.0m		22.0			21.7			21.8		22.2	21.4		22.1	21.1		22.2	20.9		22.2		
38.0m			16.4					19.0			18.6			18.3		18.5	18.1		18.5	18.0	
42.0m			14.5			14.2			14.2		16.4			16.1			15.9		15.7	15.7	
46.0m									12.6			12.3			11.9		14.1			13.9	
50.0m												11.0			10.6			10.4		12.5	10.3
54.0m																	9.3				9.2
58.0m																					8.2
m	48.2m																				
	43.0m			46.0m			49.0m			52.0m			55.0m			58.0m			61.0m		
	85°	75°	65°	85°	75°	65°	85°	75°	65°	85°	75°	65°	85°	75°	65°	85°	75°	65°	85°	75°	65°
22.0m	29.6																				
24.0m	27.0			26.8			21.8														
26.0m	25.4			24.6			20.5			16.5			14.5								
28.0m	23.9			23.2			19.6			16.0			14.0			13.5			13.5		
30.0m	22.6			21.8			18.4			15.6			13.7			13.5			13.5		
34.0m	20.4			18.8			16.9			14.0			12.3			10.6			9.0		
38.0m	18.1	17.7		16.2	17.5		14.5			12.7			11.2			9.7			8.2		
42.0m	15.6	15.5		14.0	15.3		12.4	14.9		10.7	14.2		9.4			9.0			7.6		
46.0m		13.7		12.1	13.5		10.6	13.4		9.0	12.9		7.8	11.4		7.6	10.9		6.3	9.4	
50.0m		12.2			12.0		9.0	11.9		7.5	11.0		6.4	9.6		6.3	9.2		5.1	7.8	
54.0m			8.9		10.8	8.7		10.6			9.2		5.2	8.0		5.1	7.7		4.0	6.4	
58.0m			8.0			7.8		9.2	7.6		7.7	7.3		6.6		4.1	6.4		3.0	5.2	
62.0m					7.0				6.8			6.5		5.3	6.4		5.3	6.7		4.1	
66.0m									6.1				5.8		5.7		4.3	6.0		3.1	5.2
70.0m															5.1			5.3		2.3	4.1
74.0m																	4.3				3.2



塔式工况额定起重能力表

Rated Lifting Capacity Load Chart (Luffing Jib Duty)



65°-85°
36.2m-60.2m



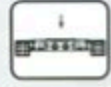
22m-61m



360°



88.5t



24t

m	51.2m																				
	22.0m			25.0m			28.0m			31.0m			34.0m			37.0m			40.0m		
	85°	75°	65°	85°	75°	65°	85°	75°	65°	85°	75°	65°	85°	75°	65°	85°	75°	65°	85°	75°	65°
14.0m																					
16.0m	45.3			44.0																	
18.0m	41.6			40.4			39.6			38.4											
20.0m	38.6			37.5			36.7			35.5			34.4			34.4					
22.0m	36.1			35.0			34.2			33.1			32.0			31.1			30.2		
24.0m	34.1			32.8			32.1			31.0			29.9			29.1			28.2		
26.0m	32.5			31.1			30.3			29.2			28.1			27.3			26.5		
28.0m		27.4		29.6			28.8			27.6			26.6			25.7			24.9		
30.0m		25.2			24.9		27.5	24.9		26.2			25.2			24.4			23.6		
34.0m		21.6			21.3			21.4		22.5	21.0		22.4	20.7		22.1			21.3		
38.0m					18.5			18.6			18.3			17.9		18.7	17.8		18.7	17.6	
42.0m			14.0				13.6				16.1			16.7			15.6		15.9	15.4	
46.0m							12.1			12.1			11.8	14.0	11.4		13.8			13.6	
50.0m												10.5			10.2			10.0		12.2	9.8
54.0m															9.1			8.9			8.7
58.0m																					7.9
m	51.2m																				
	43.0m			46.0m			49.0m			52.0m			55.0m			58.0m			61.0m		
	85°	75°	65°	85°	75°	65°	85°	75°	65°	85°	75°	65°	85°	75°	65°	85°	75°	65°	85°	75°	65°
22.0m	27.2																				
24.0m	24.8			24.6			20.0														
26.0m	23.3			22.5			18.6			16.6			15.6								
28.0m	21.9			21.2			16.8			16.1			15.2			13.5			13.5		
30.0m	20.7			20.0			16.7			16.0			14.9			13.5			13.5		
34.0m	18.6			18.0			15.9			15.1			13.5			11.7			10.1		
38.0m	17.0	17.3		16.3			14.4			12.8			11.4			10.8			9.3		
42.0m	15.7	15.1		14.1	15.0		12.6	13.5		10.9	12.9		9.5			9.1			7.7		
46.0m		13.4		12.2	13.2		10.7	12.4		9.1	11.7		7.9	11.2		7.7	11.1		6.3		
50.0m		11.9			11.8		9.1	11.4		7.6	10.8		6.5	9.9		6.4	9.5		5.1	8.1	
54.0m		10.7	8.4		10.5	8.3		10.4			9.6		5.2	8.3		5.2	8.0		4.1	6.7	
58.0m			7.6			7.4		9.3	7.2		8.0	6.9		6.8		4.2	6.7		3.1	5.4	
62.0m			6.8			6.6			6.4		6.7	6.2		5.6	6.0		5.5	6.3		4.3	
66.0m									5.8			5.5			5.3		4.4	5.7		3.3	5.4
70.0m												4.9			4.7			5.1		2.4	4.4
74.0m																		4.6			3.5
78.0m																					2.6

塔式工况额定起重能力表

Rated Lifting Capacity Load Chart (Luffing Jib Duty)



65°-85°
36.2m-60.2m



22m-61m



360°



88.5t



24t

m	54.2m																				
	22.0m			25.0m			28.0m			31.0m			34.0m			37.0m			40.0m		
	85°	75°	65°	85°	75°	65°	85°	75°	65°	85°	75°	65°	85°	75°	65°	85°	75°	65°	85°	75°	65°
14.0m																					
16.0m	41.8			40.7																	
18.0m	38.4			37.3			36.5			35.4											
20.0m	35.6			34.5			33.8			32.7			31.7			31.6					
22.0m	33.2			32.1			31.5			30.4			29.4			28.6			27.7		
24.0m	31.2			30.1			29.5			28.4			27.4			26.6			25.9		
26.0m	29.7			28.4			27.8			26.7			25.7			25.0			24.2		
28.0m		26.9		27.1			26.3			25.2			24.3			23.5			22.8		
30.0m		24.7			24.4		25.1			24.0			23.0			22.2			21.5		
34.0m		21.1			20.8			20.9		22.0	20.5		20.9	20.2		20.1			19.3		
38.0m					18.1			18.2			17.8			17.5		18.4	17.3		17.7	17.2	
42.0m					13.3			13.0			15.7			15.4			15.2		16.0	15.0	
46.0m								11.5			11.5			11.2		13.6		13.5		13.3	
50.0m										10.3			10.0			9.6			9.4		11.9
54.0m																8.6			8.4		8.2
58.0m																			7.6		7.4
m	54.2m																				
	43.0m			46.0m			49.0m			52.0m			55.0m			58.0m			61.0m		
	85°	75°	65°	85°	75°	65°	85°	75°	65°	85°	75°	65°	85°	75°	65°	85°	75°	65°	85°	75°	65°
22.0m	27.4																				
24.0m	25.0			24.7			18.2														
26.0m	23.4			22.6			16.6			13.9			13.5								
28.0m	21.9			21.2			15.1			13.5			13.5			13.5					
30.0m	20.7			20.0			14.1			13.5			13.5			13.5			13.5		
34.0m	18.6			17.9			14.4			12.8			12.2			10.9			8.2		
38.0m	16.9	16.9		16.2			13.0			12.4			11.5			9.9			7.4		
42.0m	15.6	14.7		14.3	14.6		11.9	12.2		11.0			9.6			9.2			6.8		
46.0m		13.0		12.3	12.9		10.8	11.1		9.2	10.5		8.0	10.0		7.7	9.9		6.4		
50.0m		11.6			11.4		9.2	10.2		7.7	9.6		6.6	9.1		6.4	9.0		5.2	8.4	
54.0m		10.4	7.9		10.2			9.4		6.4	8.8		5.3	8.3		5.3	8.3		4.1	6.9	
58.0m			7.1			6.9		8.8	6.7		8.2			7.1		4.2	6.9		3.1	5.6	
62.0m			6.4			6.2			6.0		6.9	5.7		5.8	5.5		5.7		2.3	4.5	
66.0m						5.5			5.4			5.1		4.6	4.9		4.6	5.1		3.5	4.6
70.0m												4.5			4.3			4.7		2.6	4.2
74.0m																3.9		4.2			3.8
78.0m																					2.8



塔式工况额定起重能力表

Rated Lifting Capacity Load Chart (Luffing Jib Duty)



65°-85°
36.2m-60.2m



22m-61m



360°



88.5t



24t

m	57.2m																				
	22.0m			25.0m			28.0m			31.0m			34.0m			37.0m			40.0m		
	85°	75°	65°	85°	75°	65°	85°	75°	65°	85°	75°	65°	85°	75°	65°	85°	75°	65°	85°	75°	65°
14.0m																					
16.0m	38.6			37.6																	
18.0m	35.4			34.4			33.7														
20.0m	32.7			31.8			31.1			30.1			29.1								
22.0m	30.5			29.5			28.9			27.9			27.0			26.2				25.4	
24.0m	28.7			27.6			27.1			26.1			25.1			24.4				23.6	
26.0m	27.2			26.0			25.5			24.5			23.5			22.8				22.1	
28.0m				24.7			24.1			23.1			22.2			21.4				20.7	
30.0m		24.2			23.9		22.9			21.9			20.9			20.2				19.5	
34.0m		20.7			20.4			20.4		20.0	20.1		18.9			18.2				17.5	
38.0m					17.7			17.8			17.4		17.5	17.1		16.7	16.9			16.0	16.7
42.0m				12.8				15.7			15.3			15.0			14.8			14.8	14.7
46.0m			11.3				11.0			11.0				13.3			13.1				13.0
50.0m									9.8			9.5			9.1		11.7				11.6
54.0m												8.5			8.2			8.0			7.8
58.0m																		7.1			7.0
62.0m																					6.2
m	57.2m																				
	43.0m			46.0m			49.0m			52.0m			55.0m			58.0m			61.0m		
	85°	75°	65°	85°	75°	65°	85°	75°	65°	85°	75°	65°	85°	75°	65°	85°	75°	65°	85°	75°	65°
24.0m	22.8			22.6																	
26.0m	21.3			20.6			16.9			13.5											
28.0m	20.0			19.3			15.5			13.5			13.5			13.5					
30.0m	18.8			18.1			14.6			13.5			13.5			13.5				13.5	
34.0m	16.8			16.2			13.0			12.4			10.9			10.8				9.2	
38.0m	15.2			14.6			11.7			11.1			10.6			10.5				8.5	
42.0m	14.0	14.3		13.3	13.7		10.6	10.9		10.1			9.6			9.3				7.9	
46.0m	13.1	12.7		12.3	12.4		9.8	9.9		9.2	9.3		8.1	8.8		7.8				6.5	
50.0m		11.3			11.1		9.1	9.0		7.8	8.4		6.7	8.0		6.5	7.9			5.3	7.4
54.0m		10.1			9.9			8.3		6.5	7.7		5.4	7.3		5.4	7.2			4.2	6.7
58.0m			6.7		8.9	6.5		7.7			7.1			6.7		4.3	6.6			3.2	5.9
62.0m			5.9			5.8			5.4		6.7	4.9		6.0	4.5		5.9			2.3	4.7
66.0m						5.1			5.0			4.4		4.8	4.0		4.8	4.1		3.7	3.6
70.0m									4.4			4.1			3.7			3.7		2.8	3.2
74.0m															3.4			3.4			2.9
78.0m																		3.2			2.7

塔式工况额定起重能力表

Rated Lifting Capacity Load Chart (Luffing Jib Duty)



65°-85°

36.2m-60.2m



22m-61m



360°



68.5t



24t

Jib Length (m)	60.2m																					
	22.0m			25.0m			28.0m			31.0m			34.0m			37.0m			40.0m			
	85°	75°	65°	85°	75°	65°	85°	75°	65°	85°	75°	65°	85°	75°	65°	85°	75°	65°	85°	75°	65°	
14.0m																						
16.0m	34.0																					
18.0m	31.1			30.2			29.6															
20.0m	28.7			27.8			27.3			26.4			25.5									
22.0m	26.7			25.8			25.3			24.4			23.6			22.9			22.7			
24.0m	25.0			24.1			23.6			22.8			21.9			21.2			20.6			
26.0m	23.7			22.7			22.2			21.3			20.5			19.8			19.2			
28.0m				21.5			21.0			20.1			19.2			18.6			18.0			
30.0m		23.0		20.6			19.9			19.0			18.2			17.5			16.9			
34.0m		20.3		19.7			19.1			17.3	18.3		16.4			15.7			15.1			
38.0m				17.3			17.3			16.4	15.1	15.6			14.3	15.0			13.7			
42.0m							15.3			15.0			14.1			13.5			12.6	12.9		
46.0m			10.8			10.5			10.4				13.0			12.3				11.8		
50.0m						9.3			9.3			9.0			8.6	11.4				10.8		
54.0m												8.1			7.7			7.5		10.1	7.3	
58.0m															6.9			6.7			6.5	
62.0m																					5.8	
Jib Length (m)	60.2m																					
	43.0m			46.0m			49.0m			52.0m			55.0m			58.0m			61.0m			
	85°	75°	65°	85°	75°	65°	85°	75°	65°	85°	75°	65°	85°	75°	65°	85°	75°	65°	85°	75°	65°	
24.0m	20.8			17.1																		
26.0m	19.4			15.6			15.4			14.7												
28.0m	18.1			14.6			14.1			13.8			13.5			13.5						
30.0m	17.0			13.7			13.5			13.5			13.5			13.5			13.5			
34.0m	15.2			12.2			11.7			11.1			10.6			10.6			10.0			
38.0m	13.7			10.9			10.5			9.9			9.5			9.4			8.9			
42.0m	12.5	12.8		9.9	10.2		9.5			8.9			8.5			8.5			7.9			
46.0m	11.6	11.6		9.2	9.2		8.7	8.7		8.1	8.1		7.7	7.7		7.7			6.6			
50.0m		10.6			8.4		8.1	7.9		7.5	7.4		6.8	6.9		6.6	6.9		5.4	6.3		
54.0m		9.8			7.7			7.2		6.6	6.7		5.5	6.3		5.4	6.2		4.3	5.7		
58.0m			6.2		7.2	5.2		6.7			6.2			5.7		4.4	5.7		3.3	5.2		
62.0m				5.5			4.8		6.3	4.3		5.7	3.8		5.3		5.3		2.4	4.7		
66.0m			4.9				4.4			4.0			3.5	4.9	3.1		4.9	3.1		3.9		
70.0m									3.6				3.1			2.7		4.0	2.8		2.9	2.3
74.0m													2.9			2.5			2.5			2.1
78.0m																		2.3				1.8
82.0m																						1.7



额定起重能力表说明

说明

(1) 本起重机符合GB3811标准, 同时又满足ISO 4302、ISO 4305标准。

(2) 额定起重能力表所表示的额定总载荷值为水平坚硬地面上, 重物被缓慢平稳吊起、非行走吊重工作时的值; 工作坡度应不大于5/1000, 不得超出额定起重能力进行吊载。

(3) 额定起重能力表所示的值以吨为单位, 并基于倾翻力矩75%以内的值。

(4) 当所吊的载荷处于额定起重能力表中所列的载荷之间时, 应选择起重能力较大的载荷进行起吊, 确保吊载的安全。

(5) 额定起重能力表所示的值基于平衡负载而计算, 不包括如突然停止的冲击负载, 地表状况, 风力负荷及操作速度等影响。如在此条件下, 驾驶员必须进行减载作业; 实际起重重量是表中额定起重重量减去起重吊钩、钢丝绳及所有吊具之后的数值。

吊钩自重: 250吨钩……3.98吨,
200吨钩……3.53吨,
150吨钩……2.63吨,
80吨钩……1.42吨,
35吨钩……1.13吨,
13.5吨钩……0.70吨。

(6) 固定副臂额定起重能力表是双倍率工况表。单倍率工作时, 相同臂架组合而且相同工作幅度下起重能力与双倍率一致, 但是不需大于13.5吨; 在使用18米固定副臂, 角度为10°时, 为防止机器后倾翻, 副臂要用80吨吊钩或重量大于1.2吨吊钩。

(7) 当塔臂接22米时, 塔臂臂头必须加1吨平衡压重, 同时载荷相应折减1吨; 且工作时吊钩不允许落地, 不工作时塔臂角度应在安全角度(65°)以下。

(8) 平衡重质量为88.5t。

(9) 机器在侧面时的稳定值最小。

Notes for Rated lifting Capacity Load Chart

Notes

1. Ratings according to GB3811, ISO4302 and ISO4305.

2.The rated general lifting capacity value in the table that the heavy object is lifted slowly on the level and firm ground without traveling, working slope shouldn't be more than 5/1000, can't exceed rated lifting capacity for load.

3.The unit in the table is ton and tipping load is 75% of tipping load

4.when load lifted is between load listed in the load chart, lifting capacity biggish load should be selected for lifting to ensure safe lifting.

5.The rated lifting capacity in the table is calculated based on the stable load, not including impacting load, the hard condition of the ground and operating speed. So the driver should reduce the corresponding load from the rated lifting capacity. The weight of hook and slings should also be deducted from the rated lifting capacity.

Weight of hook: 250t hook-----3.98t,

200t hook-----3.53t,

150t hook-----2.63t.

80t hook-----1.42t,

35t hook-----1.13t,

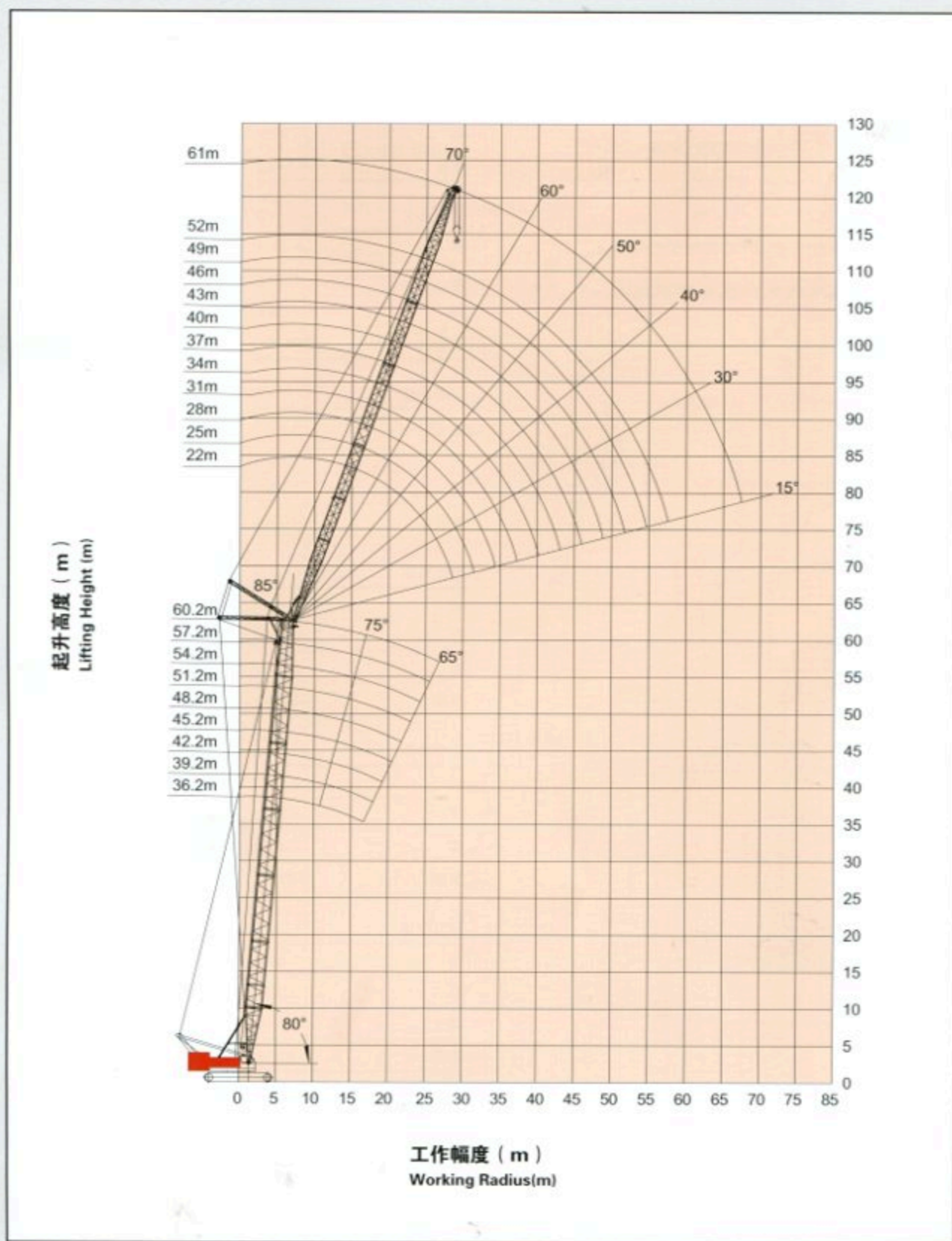
13.5t hook-----0.70t

6.Fixed jib load chart is double rate duty. When working for single-rate, lifting capacity and double-rate are accordant in the same boom combination and under same working radius, but not more than 13.5t, when using 18m fixed jib with angle 10° ,jib needs fitting 80t or more than 1.2t hook in order to prevent crane from tilting backward

7.When luffing jib is 22m, 1ton ballast should be installed on luffing jib top. 1 ton load should be deducted correspondingly. The hook should be kept suspending and should never touch the ground. The luffing jib angle should be less than 65° when the hook does not lift any load.

8.The weight of counterweight is 86.6t.

9.Stability is weak at side.

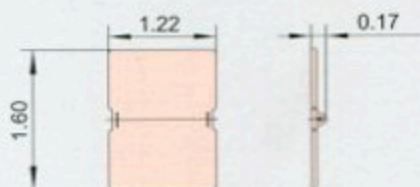
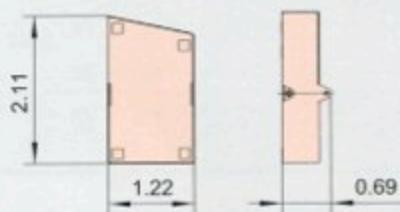
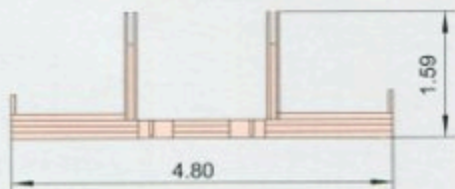
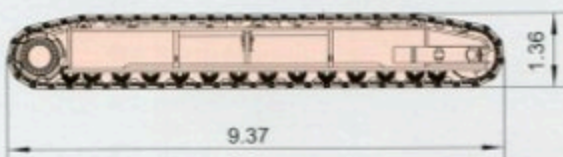
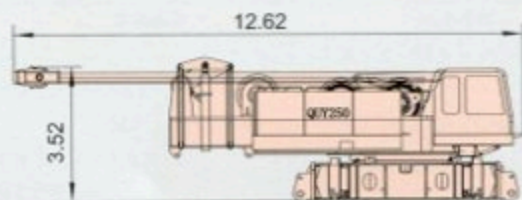




主要零部件运输尺寸

Dimensions of Main Components for Transport

尺寸单位: m Unit: m



本体	× 1	Crane body	× 1
长	12.62m	Length	12.62m
宽	3.28m	Width	3.28m
高	3.52m	Height	3.52m
重量	54000kg	Weight	54000kg

履带总成	× 2	Crawler assembly	× 2
长	9.37m	Length	9.37m
宽	1.54m	Width	1.54m
高	1.36m	Height	1.36m
重量	23600kg	Weight	23600kg

配重底座	× 1	Counterweight chassis	× 1
长	4.80m	Length	4.80m
宽	2.16m	Width	2.16m
高	1.59m	Height	1.59m
重量	16400kg	Weight	16400kg

左配重体	× 5	Left counterweight body	× 5
长	2.11m	Length	2.11m
宽	1.22m	Width	1.22m
高	0.69m	Height	0.69m
重量	6901kg	Weight	6901kg

右配重体	× 5	Right counterweight body	× 5
长	2.11m	Length	2.11m
宽	1.22m	Width	1.22m
高	0.69m	Height	0.69m
重量	7001kg	Weight	7001kg

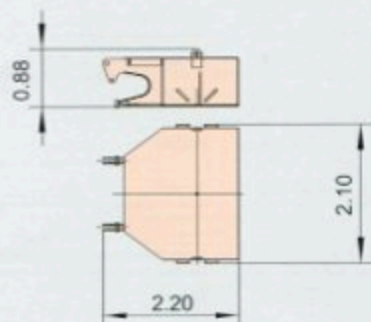
附加配重	× 2	Add-ons counterweight	× 2
长	1.60m	Length	1.60m
宽	1.22m	Width	1.22m
高	0.17m	Height	0.17m
重量	918kg	Weight	918kg

12米主臂中间节	× 1	12m boom intermediate section	× 1
长	12.17m	Length	12.17m
宽	2.28m	Width	2.28m
高	2.33m	Height	2.33m
重量	2182kg	Weight	2182kg

主要零部件运输尺寸

Dimensions of Main Components for Transport

尺寸单位: m Unit: m



车体压重	× 2
长	2.20m
宽	2.10m
高	0.88m
重量	12002kg
主臂根部节防后倾杆: 3660kg 副变幅卷扬机: 2690kg	

Central ballast	× 2
Length	2.20m
Width	2.10m
Height	0.88m
Weight	12002kg
Boom foot section backstop: 3660kg Aux. derricking windlass: 2690kg	



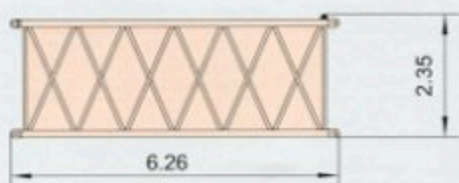
主臂基础臂节	× 1
长	8.00m
宽	2.29m
高	2.92m
重量	5849kg

Boom foot section	× 1
Length	8.00m
Width	2.29m
Height	2.92m
Weight	5849kg



主臂3米中间臂节	× 1
长	3.21m
宽	2.29m
高	2.35m
重量	830kg

Boom 3m intermediate section	× 1
Length	3.21m
Width	2.29m
Height	2.35m
Weight	830kg



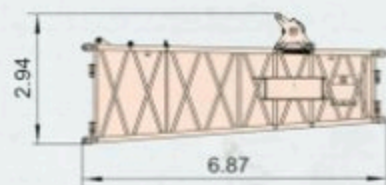
主臂6米中间臂节	× 2
长	6.26m
宽	2.29m
高	2.35m
重量	1342kg

Boom 6m intermediate section	× 2
Length	6.26m
Width	2.29m
Height	2.35m
Weight	1342kg



主臂9米中间臂节	× 4
长	9.32m
宽	2.29m
高	2.35m
重量	1725kg

Boom 9m intermediate section	× 4
Length	9.32m
Width	2.29m
Height	2.35m
Weight	1725kg



主臂6.7米变径臂节	× 1
长	6.78m
宽	2.29m
高	2.94m
重量	1998kg

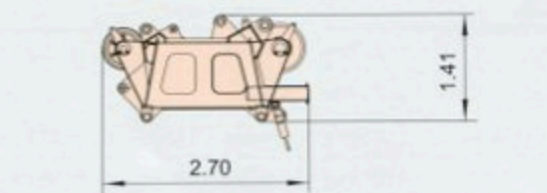
Boom 6.7m tapered section	× 1
Length	6.78m
Width	2.29m
Height	2.94m
Weight	1998kg



主要零部件运输尺寸

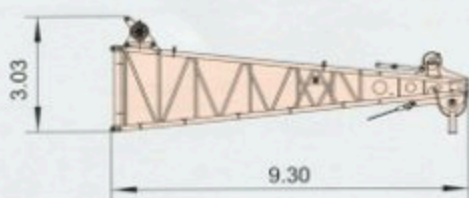
Dimensions of Main Components for Transport

尺寸单位: m Unit: m



0.9米主臂头	× 1
长	2.70m
宽	1.20m
高	1.41m
重量	1983kg

0.9m boom head	× 1
Length	2.70m
Width	1.20m
Height	1.41m
Weight	1983kg



8.8米臂头 (重型臂)	× 1
长	9.30m
宽	2.28m
高	3.03m
重量	2174kg

8.8m boom head (heavy boom)	× 1
Length	9.30m
Width	2.28m
Height	3.03m
Weight	2174kg



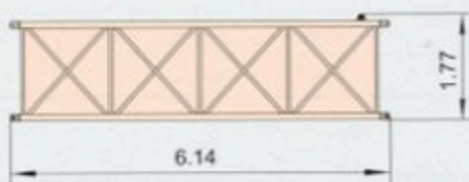
12米臂节 (重型臂)	× 1
长	12.17m
宽	2.28m
高	2.41m
重量	2183kg

12m boom section (heavy boom)	× 1
Length	12.17m
Width	2.28m
Height	2.41m
Weight	2183kg



塔臂3米中间节	× 1
长	3.14m
宽	1.63m
高	1.74m
重量	422kg

Luffing jib 3m intermediate section	× 1
Length	3.14m
Width	1.63m
Height	1.74m
Weight	422kg



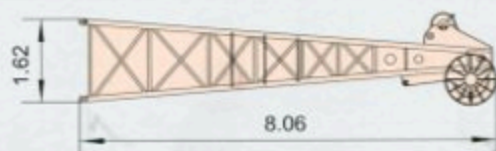
塔臂6米中间节	× 1
长	6.14m
宽	1.63m
高	1.77m
重量	706kg

Luffing jib 6m intermediate section	× 1
Length	6.14m
Width	1.63m
Height	1.77m
Weight	706kg



塔臂9米中间节	× 2
长	9.14m
宽	1.63m
高	1.72m
重量	989kg

Luffing jib 9m intermediate section	× 2
Length	9.14m
Width	1.63m
Height	1.72m
Weight	989kg



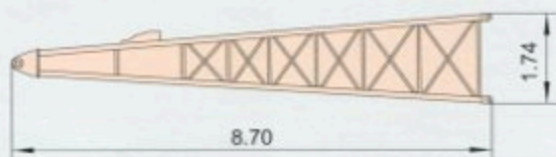
塔臂顶部臂节	× 1
长	8.06m
宽	1.63m
高	1.62m
重量	1542kg

Luffing jib top section	× 1
Length	8.06m
Width	1.63m
Height	1.62m
Weight	1542kg

主要零部件运输尺寸

Dimensions of Main Components for Transport

尺寸单位: m Unit: m



塔臂基础臂节	× 1
长	8.70m
宽	1.63m
高	1.74m
重量	1442kg

Luffing jib foot section	× 1
Length	8.70m
Width	1.63m
Height	1.74m
Weight	1442kg



塔臂前撑架	× 1
长	9.92m
宽	1.25m
高	0.96m
重量	1280kg

Luffing jib front strut	× 1
Length	9.92m
Width	1.25m
Height	0.96m
Weight	1280kg



塔臂后撑架 (带防后倾撑杆)	× 1
长	8.92m
宽	1.25m
高	1.13m
重量	1247kg

Luffing jib rear strut (with backstop)	× 1
Length	8.92m
Width	1.25m
Height	1.13m
Weight	1247kg



固定副臂基础臂节	× 2
长	6.17m
宽	1.62m
高	1.09m
重量	473kg

Fixed jib foot section	× 2
Length	6.17m
Width	1.62m
Height	1.09m
Weight	473kg



固定副臂6米中间臂节	× 4
长	6.09m
宽	1.28m
高	1.17m
重量	310kg

Fixed jib 6m intermediate section	× 4
Length	6.09m
Width	1.28m
Height	1.17m
Weight	310kg



固定副臂顶部臂节	× 1
长	6.42m
宽	1.28m
高	1.09m
重量	400kg

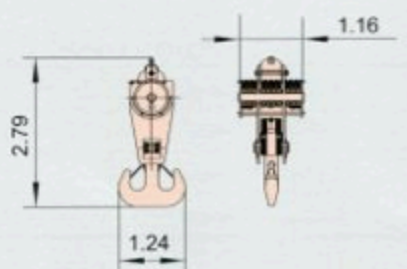
Fixed jib top section	× 1
Length	6.42m
Width	1.28m
Height	1.09m
Weight	400kg



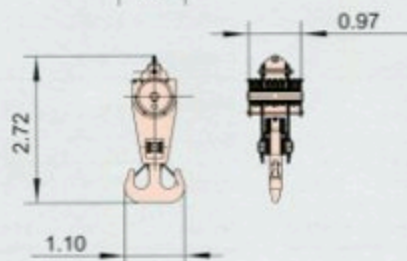
主要零部件运输尺寸

Dimensions of Main Components for Transport

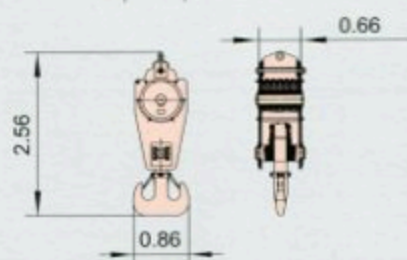
尺寸单位: m Unit: m



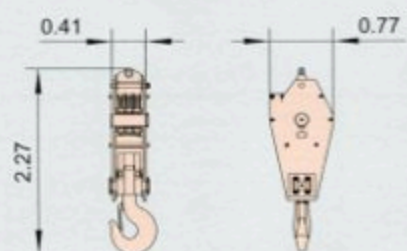
250吨吊钩	× 1	250t hook	× 1
长	2.79m	Length	2.79m
宽	1.24m	Width	1.24m
高	1.16m	Height	1.16m
重量	3980kg	Weight	3980kg



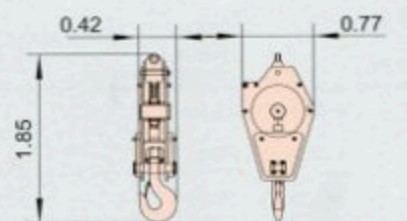
200吨吊钩	× 1	200t hook	× 1
长	2.72m	Length	2.72m
宽	1.10m	Width	1.10m
高	0.97m	Height	0.97m
重量	3530kg	Weight	3530kg



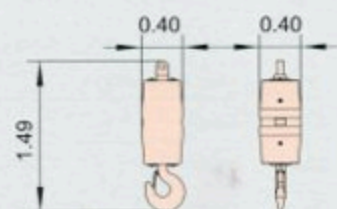
150吨吊钩	× 1	150t hook	× 1
长	2.56m	Length	2.56m
宽	0.86m	Width	0.86m
高	0.66m	Height	0.66m
重量	2625kg	Weight	2625kg



80吨吊钩	× 1	80t hook	× 1
长	2.27m	Length	2.27m
宽	0.77m	Width	0.77m
高	0.41m	Height	0.41m
重量	1420kg	Weight	1420kg



35吨吊钩	× 1	35t hook	× 1
长	1.85m	Length	1.85m
宽	0.77m	Width	0.77m
高	0.42m	Height	0.42m
重量	1130kg	Weight	1130kg



13.5吨吊钩	× 1	13.5t hook	× 1
长	1.49m	Length	1.49m
宽	0.4m	Width	0.4m
高	0.4m	Height	0.4m
重量	700kg	Weight	700kg

样本中的主要零部件运输重量为设计值, 由于制造误差, 可能稍有不同。
The transportation weight of main parts in the manual is the designed value, the actual value may be a little different due to manufacture error.

辽宁抚挖重工机械股份有限公司

地址: 辽宁省抚顺市顺城区双阳路2号

邮编: 113126

网址: www.cnfuwa.com

销售公司电话: +86-413-7647 989/7642 419

传真: +86-413-7642 419

售后服务中心电话: +86-413-7641 727

电子信箱: sale@cnfuwa.com

进出口公司电话: +86-413-7649 117/7642 558

传真: +86-413-7642 766

电子信箱: export@cnfuwa.com

免费服务电话: 800-890-0009

FUWA HEAVY INDUSTRY CO.,LTD.

Add: No.2 Shuangyang Road, Shuncheng District, Fushun Liaoning, China

p.c. 113126

<http://www.cnfuwa.com>

China Market Sale Dept. Tel: +86-413-7647 989/7642 419

Fax: +86-413-7642 419

After sale Service Dept. Tel: +86-413-7641 727

E-mail: sale@cnfuwa.com

Import & Export Dept. Tel: +86-413-7649 117/7642 558

Fax: +86-413-7642 766

E-mail: export@cnfuwa.com

技术参数如有更改恕不另行通知

Specifications may vary without prior notice

吊钩配置为全配置, 具体配置以订货合同为准。

The hook blocks in the catalogue are for your reference only.