

KOBELCO

HYDRAULIC CRAWLER CRANE

CKL 1000i

Model: CKL 1000i

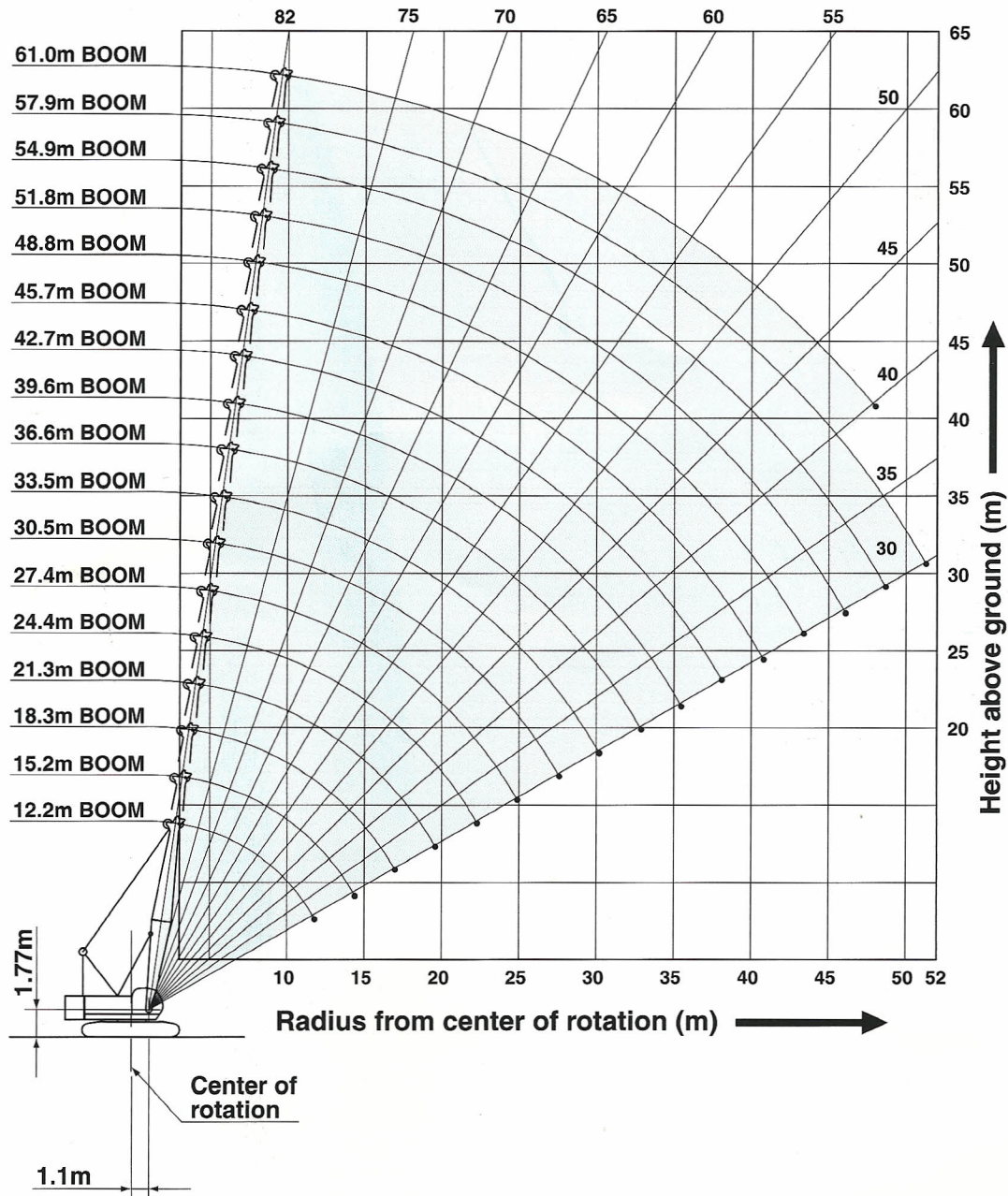


Max. Lifting Capacity: 100 t x 3.0 m*
Max. Crane Boom Length: 61.0 m
Max. Fixed Jib Combination: 51.8 m + 18.3 m

*Auxiliary sheave is necessary.

WORKING RANGES AND LIFTING CAPACITIES

Crane Boom Working Ranges



NOTES:

1. Ratings according to EN13000.
2. Ratings in metric tons for 360° working area.
3. Operating radius is the horizontal distance from center of rotation to a vertical line through the center of gravity of the load.
4. Weight of hook block(s), slings and other load handling accessories is included in rated load. Their total weight must be subtracted from rated load to obtain weight that can be lifted.
5. Ratings shown are based on freely suspended loads and make no allowance for such factors as wind effect on lifted load, ground conditions, out-of-level, operating speeds or any other condition that could be detrimental to the safe operation of this equipment. Operator, therefore, has the responsibility to judge the existing conditions and reduce lifted loads and operating speeds accordingly.
6. Ratings are for operation on a firm and level surface, up to 1% gradient.
7. At radii and boom lengths where no ratings are shown on chart, operation is not intended nor approved.
8. Boom inserts and guy lines must be arranged as shown in the "Operator's Manual".
9. Boom hoist reeving is 12 part line.
10. Gantry must be in raised position for all conditions.
11. Boom backstops are required for all boom lengths.
12. Crawler frames must be fully extended for all crane operations.
13. Ratings shown in are determined by the strength of the boom or other structural component.
14. Instruction in the "Operator's Manual" must be strictly observed when operating the machine.
15. Crane boom ratings: Deduct weight of main hook block, slings, and all other load handling accessories from crane boom ratings shown.
16. Auxiliary sheave ratings for crane boom: Deduct weight of ball hook, slings, and all other load handling accessories from auxiliary sheave ratings for crane boom shown.
17. Crane boom lengths for auxiliary sheave mounting are 12.2 m to 57.9 m.



Crane Boom Lifting Capacity

Unit: metric ton

Counterweight: 29.3 t, Carbody weight: 7.3 t

Working radius (m)	Boom length (m)																	Working radius (m)		
	12.2	15.2	18.3	21.3	24.4	27.4	30.5	33.5	36.6	39.6	42.7	45.7	48.8	51.8	54.9	57.9	61.0			
3.0	100.0*	3.4m/90.0																	3.0	
4.0	86.5	86.4	86.2	4.3m/75.0	4.7m/65.4														4.0	
5.0	70.1	69.9	68.2	64.8	61.5	5.1m/49.2	5.6m/47.9												5.0	
6.0	53.0	52.8	52.7	50.3	48.2	46.3	44.4	42.6	6.4m/37.3	6.8m/34.8									6.0	
7.0	45.6	45.4	44.0	42.2	40.6	39.2	37.8	36.5	35.3	34.1	7.3m/31.7	7.7m/28.0							7.0	
8.0	38.1	38.3	37.7	36.3	35.1	34.0	32.8	31.8	30.8	29.8	28.9	27.8	8.3m/21.9	8.5m/19.2					8.0	
9.0	32.1	32.5	32.4	31.8	30.8	29.9	28.9	28.1	27.3	26.5	25.7	25.0	20.8	18.6	9.1m/16.2	9.4m/13.9	9.8m/11.8		9.0	
10.0	27.1	28.1	28.0	27.9	27.4	26.7	25.8	25.1	24.5	23.8	23.1	22.5	19.5	17.4	15.2	13.4	11.7		10.0	
12.0	11.8m/19.6	22.1	22.0	21.8	21.7	21.7	21.2	20.7	20.2	19.6	19.1	18.6	17.3	15.4	13.3	11.7	10.2		12.0	
14.0		17.1	18.0	17.9	17.7	17.7	17.5	17.4	17.1	16.6	16.1	15.8	15.4	13.8	11.9	10.4	9.0		14.0	
16.0		14.4m/16.1	15.2	15.0	14.9	14.8	14.7	14.6	14.5	14.3	13.9	13.6	13.3	12.4	10.7	9.3	8.0		16.0	
18.0			17.0m/13.4	12.9	12.8	12.7	12.5	12.5	12.4	12.2	12.1	11.9	11.6	11.4	9.7	8.4	7.2		18.0	
20.0				19.6m/11.3	11.2	11.1	10.9	10.8	10.7	10.6	10.4	10.4	10.3	10.0	8.9	7.6	6.5		20.0	
22.0					9.9	9.8	9.6	9.5	9.4	9.3	9.1	9.0	9.0	8.9	8.1	7.0	5.9		22.0	
24.0					22.3m/9.7	8.7	8.5	8.4	8.3	8.2	8.1	8.0	7.9	7.8	7.5	6.4	5.4		24.0	
26.0						24.9m/8.3	7.6	7.6	7.5	7.3	7.2	7.1	7.0	6.9	6.8	5.9	4.9		26.0	
28.0							27.6m/7.1	6.8	6.7	6.6	6.4	6.3	6.3	6.1	6.0	5.4	4.5		28.0	
30.0								6.2	6.1	5.9	5.8	5.7	5.6	5.5	5.4	5.0	4.1		30.0	
32.0									30.2m/6.1	5.5	5.4	5.2	5.1	5.1	4.9	4.8	3.8		32.0	
34.0										32.9m/5.3	4.9	4.7	4.7	4.6	4.4	4.3	3.4		34.0	
36.0											35.5m/4.6	4.3	4.2	4.1	4.0	3.9	3.2		36.0	
38.0												4.0	3.9	3.8	3.6	3.5	3.4	2.9		38.0
40.0												38.1m/3.9	3.5	3.4	3.3	3.1	3.0	2.6		40.0
42.0													40.8m/3.4	3.1	3.0	2.8	2.7	2.3		42.0
44.0														43.4m/2.9	2.7	2.6	2.5	2.1		44.0
46.0															2.4	2.3	2.2	1.9		46.0
48.0															46.1m/2.4	2.0	1.9	1.7		48.0
50.0																48.7m/1.9	1.8			50.0
52.0																	51.3m/1.7			52.0
Reeves	8	8	7	6	6	4	4	4	3	3	3	3	2	2	2	2	2	2	2	Reeves

Note:
 Ratings according to EN13000. (Ratings 75% tipping load)
 Ratings shown in are determined by the strength of the boom or other structural components.
 Refer to notes P8.

*Auxiliary sheave is necessary.



Auxiliary Sheave Lifting Capacity for Crane Boom (Without Main Hook)

Unit: metric ton

Counterweight: 29.3 t, Carbody weight: 7.3 t

Working radius (m)	12.2	15.2	18.3	21.3	24.4	27.4	30.5	33.5	36.6	39.6	42.7	45.7	Working radius (m)
3.7	11.0												3.7
4.0	11.0	4.1m/11.0	4.7m/11.0										4.0
5.0	11.0	11.0	11.0	11.0	5.4m/11.0	5.8m/11.0							5.0
6.0	11.0	11.0	11.0	11.0	11.0	11.0	6.3m/11.0	6.7m/11.0					6.0
7.0	11.0	11.0	11.0	11.0	11.0	11.0	11.0	11.0	7.1m/11.0	7.5m/11.0			7.0
8.0	11.0	11.0	11.0	11.0	11.0	11.0	11.0	11.0	11.0	11.0	11.0	8.4m/11.0	8.0
9.0	11.0	11.0	11.0	11.0	11.0	11.0	11.0	11.0	11.0	11.0	11.0	11.0	9.0
10.0	11.0	11.0	11.0	11.0	11.0	11.0	11.0	11.0	11.0	11.0	11.0	11.0	10.0
12.0	11.0	11.0	11.0	11.0	11.0	11.0	11.0	11.0	11.0	11.0	11.0	11.0	12.0
14.0	12.8m/11.0	11.0	11.0	11.0	11.0	11.0	11.0	11.0	11.0	11.0	11.0	11.0	14.0
16.0		15.4m/11.0	11.0	11.0	11.0	11.0	11.0	11.0	11.0	11.0	11.0	11.0	16.0
18.0			11.0	11.0	11.0	11.0	11.0	11.0	11.0	11.0	11.0	11.0	18.0
20.0				10.7	10.7	10.6	10.4	10.3	10.2	10.1	9.9	9.9	20.0
22.0				20.6m/9.8	9.4	9.3	9.1	9.0	8.9	8.8	8.6	8.5	22.0
24.0					23.3m/8.5	8.2	8.0	7.9	7.8	7.7	7.6	7.5	24.0
26.0						25.9m/7.1	7.1	7.1	7.0	6.8	6.7	6.6	26.0
28.0							6.4	6.3	6.2	6.1	5.9	5.8	28.0
30.0							28.6m/6.2	5.7	5.6	5.4	5.3	5.2	30.0
32.0								31.2m/5.3	5.0	4.9	4.7	4.6	32.0
34.0									33.9m/4.5	4.4	4.2	4.2	34.0
36.0										4.0	3.8	3.7	36.0
38.0										36.5m/3.9	3.5	3.4	38.0
40.0											39.1m/3.3	3.0	40.0
42.0												41.8m/2.6	42.0
Reeves	1	1	1	1	1	1	1	1	1	1	1	1	Reeves

Working radius (m)	48.8	51.8	54.9	57.9	Working radius (m)
8.0	8.6m/11.0				8.0
9.0	11.0	11.0	9.5m/11.0	9.9m/11.0	9.0
10.0	11.0	11.0	11.0	11.0	10.0
12.0	11.0	11.0	11.0	11.0	12.0
14.0	11.0	11.0	11.0	9.9	14.0
16.0	11.0	11.0	10.2	8.8	16.0
18.0	11.0	10.9	9.2	7.9	18.0
20.0	9.8	9.5	8.4	7.1	20.0
22.0	8.5	8.4	7.6	6.5	22.0
24.0	7.4	7.3	7.0	5.9	24.0
26.0	6.5	6.4	6.3	5.4	26.0
28.0	5.8	5.6	5.5	4.9	28.0
30.0	5.1	5.0	4.9	4.5	30.0
32.0	4.6	4.4	4.3	4.1	32.0
34.0	4.1	3.9	3.8	3.8	34.0
36.0	3.6	3.5	3.4	3.3	36.0
38.0	3.3	3.1	3.0	2.9	38.0
40.0	2.9	2.8	2.6	2.5	40.0
42.0	2.6	2.5	2.3	2.2	42.0
44.0	2.3	2.2	2.1	2.0	44.0
46.0	44.5m/2.2	1.9	1.8	1.7	46.0
48.0		47.2m/1.7	1.5	1.5	48.0
Reeves	1	1	1	1	Reeves

Note:

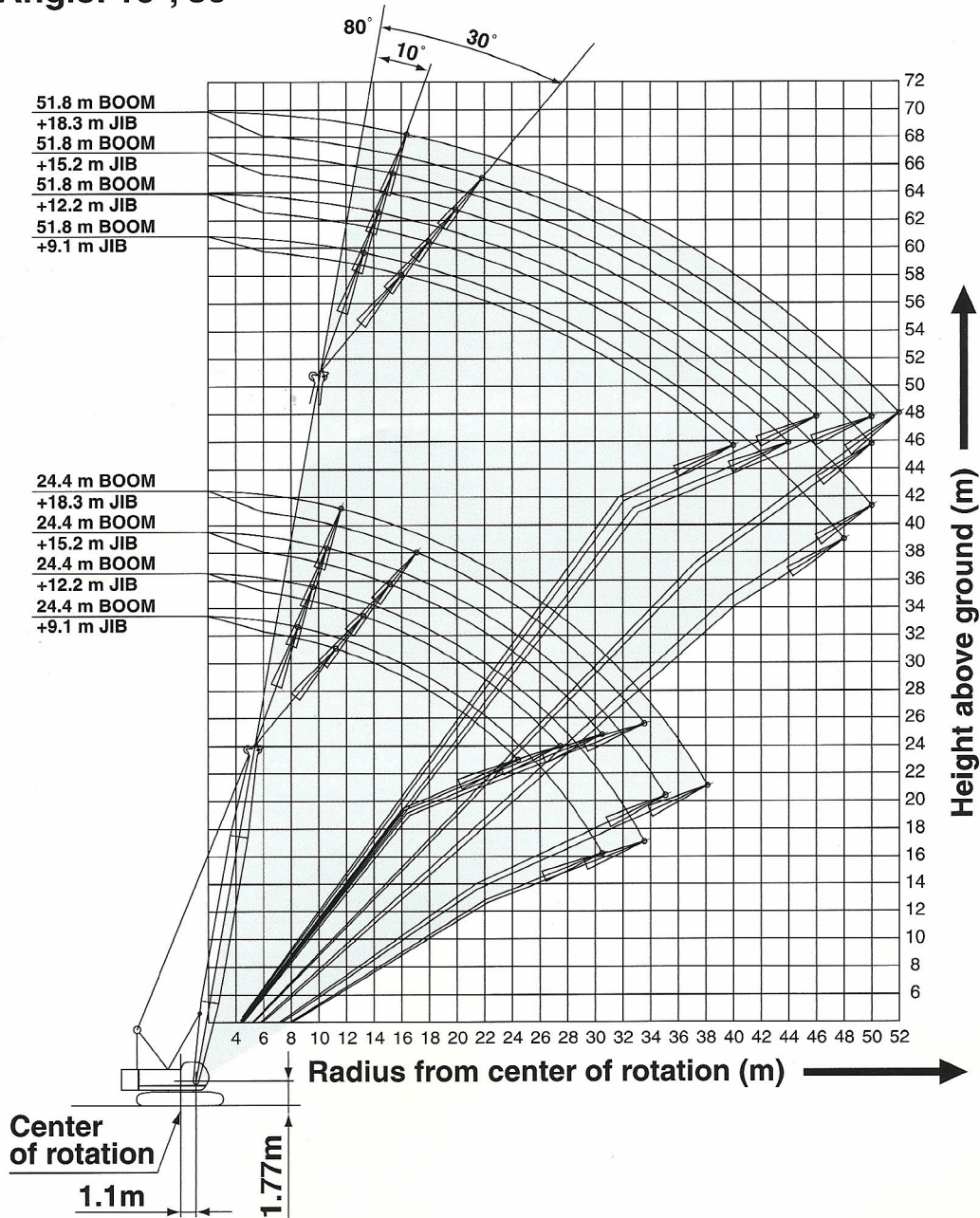
Ratings according to EN13000.

Ratings shown in are determined by the strength of the boom or other structural components.

Refer to notes P8.

Fixed Jib Working Ranges

Jib Offset Angle: 10°, 30°



NOTES:

1. Ratings according to EN13000.
2. Ratings in metric tons for 360 working area.
3. Operating radius is the horizontal distance from center of rotation to a vertical line through the center of gravity of the load.
4. Weight of hook block (s), slings and other load handling accessories is included in rated load. Their total weight must be subtracted from rated load to obtain weight that can be lifted.
5. Ratings shown are based on freely suspended loads and make no allowance for such factors as wind effect on lifted load, ground conditions, out-of-level, operating speeds or any other condition that could be detrimental to the safe operation of this equipment. Operator, therefore, has the responsibility to judge the existing conditions and reduce lifted loads and operating speeds accordingly.
6. Ratings are for operation on a firm and level surface, up to 1% gradient.
7. At radii and boom lengths where no ratings are shown on chart, operation is not intended nor approved.
8. Boom inserts and guy lines must be arranged as shown in the "Operator's Manual".
9. Boom hoist reeving is 12 part line.
10. Gantry must be in raised position for all conditions.
11. Boom backstops are required for all boom lengths.
12. Crawler frames must be fully extended for all crane operations.
13. Ratings shown in are determined by the strength of the boom or other structural component.
14. Instruction in the "Operator's Manual" must be strictly observed when operating the machine.
15. Fixed jib ratings: Deduct weight of jib hook block, slings, and all other load handling accessories from fixed jib ratings shown.
16. Crane boom lengths for fixed jib mounting are 24.4 m to 51.8 m.
17. Crane boom ratings with fixed jib: Deduct weight of jib hook block, slings, and all other load handling accessories from crane boom ratings with fixed jib shown.



Fixed Jib Lifting Capacities (Without Main Hook)

Unit: metric ton

Jib Offset Angle: 10°

Counterweight: 29.3 t, Carbody weight: 7.3 t

Boom length (m)		24.4				30.5				36.6				42.7				Boom length (m)
Jib length (m)		9.1	12.2	15.2	18.3	9.1	12.2	15.2	18.3	9.1	12.2	15.2	18.3	9.1	12.2	15.2	18.3	Jib length (m)
Working radius (m)	9.0	10.9																9.0
	10.0	10.9				10.9												10.0
	12.0	10.9	10.9	9.0		10.9	10.9			10.9								12.0
	14.0	10.9	10.9	9.0	8.1	10.9	10.9	9.0	8.1	10.9	10.9	9.0		10.9	10.9			14.0
	16.0	10.9	10.5	8.7	7.7	10.9	10.9	9.0	8.1	10.9	10.9	9.0	8.1	10.9	10.9	9.0		16.0
	18.0	10.9	9.5	7.8	6.8	10.9	10.6	8.7	7.5	10.9	10.9	9.0	8.1	10.9	10.9	9.0	8.1	18.0
	20.0	10.3	8.6	7.1	6.2	10.1	9.7	7.9	6.8	9.9	10.0	8.6	7.4	9.6	9.8	9.0	7.9	20.0
	22.0	9.0	7.8	6.5	5.6	8.8	8.9	7.2	6.2	8.6	8.7	8.0	6.8	8.4	8.5	8.5	7.3	22.0
	24.0	8.0	7.2	5.9	5.1	7.8	8.0	6.6	5.7	7.5	7.7	7.3	6.2	7.3	7.5	7.6	6.7	24.0
	26.0	7.2	6.7	5.5	4.7	7.0	7.1	6.2	5.3	6.7	6.9	6.8	5.8	6.5	6.7	6.7	6.3	26.0
	28.0	6.5	6.2	5.1	4.4	6.3	6.4	5.7	4.9	6.1	6.2	6.2	5.4	5.8	5.9	6.0	5.8	28.0
	30.0	5.9	5.8	4.8	4.1	5.7	5.8	5.4	4.6	5.5	5.5	5.7	5.0	5.2	5.3	5.4	5.4	30.0
	32.0		5.5	4.5	3.8	5.2	5.3	5.1	4.3	5.0	5.0	5.1	4.7	4.7	4.8	4.9	4.9	32.0
	34.0			4.2	3.6	4.7	4.8	4.8	4.0	4.5	4.6	4.7	4.4	4.3	4.3	4.4	4.5	34.0
	36.0				3.4		4.4	4.5	3.8	4.1	4.2	4.2	4.2	3.8	3.9	4.0	4.0	36.0
	38.0				3.2		4.0	4.1	3.6	3.8	3.8	3.9	3.9	3.5	3.6	3.6	3.7	38.0
	40.0							3.8	3.4	3.4	3.5	3.6	3.6	3.2	3.3	3.3	3.3	40.0
42.0								3.3		3.2	3.3	3.3	2.9	3.0	3.0	3.1	42.0	
44.0								3.1			3.0	3.1	2.5	2.7	2.8	2.8	44.0	
46.0												2.8	2.2	2.3	2.5	2.6	46.0	
48.0												2.4		2.0	2.2	2.3	48.0	
50.0															1.9	2.0	50.0	
52.0																1.7	52.0	
Reeves	1	1	1	1	1	1	1	1	1	1	1	1	1	1	1	1	Reeves	

Boom length (m)		48.8				51.8				Boom length (m)
Jib length (m)		9.1	12.2	15.2	18.3	9.1	12.2	15.2	18.3	Jib length (m)
Working radius (m)	14.0	10.9				10.9				14.0
	16.0	10.9	10.9			10.9	10.9			16.0
	18.0	10.8	10.9	9.0	8.1	10.7	10.8	9.0	8.1	18.0
	20.0	9.5	9.6	9.0	8.1	9.4	9.5	9.0	8.1	20.0
	22.0	8.2	8.4	8.5	7.8	8.1	8.3	8.3	8.0	22.0
	24.0	7.2	7.3	7.4	7.2	7.1	7.2	7.3	7.4	24.0
	26.0	6.3	6.5	6.6	6.7	6.2	6.4	6.5	6.6	26.0
	28.0	5.7	5.8	5.9	5.9	5.6	5.7	5.8	5.8	28.0
	30.0	5.1	5.2	5.2	5.3	5.0	5.1	5.1	5.2	30.0
	32.0	4.6	4.6	4.7	4.8	4.4	4.5	4.6	4.7	32.0
	34.0	4.1	4.2	4.3	4.3	4.0	4.1	4.2	4.2	34.0
	36.0	3.7	3.8	3.8	3.9	3.6	3.6	3.7	3.8	36.0
	38.0	3.4	3.4	3.5	3.5	3.3	3.3	3.4	3.4	38.0
	40.0	3.0	3.1	3.2	3.2	2.9	3.0	3.0	3.1	40.0
	42.0	2.8	2.8	2.9	2.9	2.7	2.7	2.8	2.8	42.0
	44.0	2.5	2.5	2.6	2.6	2.3	2.4	2.5	2.5	44.0
	46.0	2.2	2.2	2.4	2.4	2.1	2.1	2.2	2.3	46.0
48.0	1.8	1.9	2.1	2.1	1.7	1.8	1.9	2.0	48.0	
50.0	1.4	1.6	1.8	1.9		1.5	1.6	1.7	50.0	
52.0			1.5	1.6				1.5	52.0	
Reeves	1	1	1	1	1	1	1	1	Reeves	

Note:

Ratings according to EN13000.

Ratings shown in are determined by the strength of the boom or other structural components.

Refer to notes P12.

Unit: metric ton

Jib Offset Angle: 30°

Counterweight: 29.3 t, Carbody weight: 7.3 t

Boom length (m)	24.4				30.5				36.6				42.7				Boom length (m)
Jib length (m)	9.1	12.2	15.2	18.3	9.1	12.2	15.2	18.3	9.1	12.2	15.2	18.3	9.1	12.2	15.2	18.3	Jib length (m)
12.0	9.5																12.0
14.0	9.3	6.9			9.5				9.5								14.0
16.0	8.6	6.4			9.0	6.7			9.4				9.5				16.0
18.0	8.0	5.9	4.8		8.6	6.2	5.0		9.0	6.5			9.4	6.7			18.0
20.0	7.5	5.6	4.5	3.8	8.0	5.9	4.7	3.9	8.5	6.2	4.9	4.1	8.9	6.4	5.1		20.0
22.0	7.1	5.3	4.2	3.6	7.6	5.6	4.4	3.7	8.1	5.9	4.6	3.9	8.4	6.1	4.8	4.0	22.0
24.0	6.8	5.0	4.0	3.4	7.3	5.3	4.2	3.5	7.7	5.6	4.4	3.7	7.6	5.8	4.6	3.8	24.0
26.0		4.8	3.8	3.2	7.0	5.1	4.0	3.3	7.0	5.4	4.2	3.5	6.7	5.6	4.4	3.6	26.0
28.0			3.6	3.0	6.4	4.9	3.8	3.1	6.2	5.1	4.0	3.3	6.0	5.4	4.2	3.4	28.0
30.0			3.5	2.9		4.7	3.7	3.0	5.6	4.9	3.8	3.2	5.3	5.2	4.0	3.3	30.0
32.0				2.8			3.6	2.9	5.1	4.8	3.7	3.1	4.8	5.0	3.9	3.2	32.0
34.0								2.8		4.6	3.6	3.0	4.4	4.5	3.8	3.1	34.0
36.0								2.7			3.5	2.9	3.9	4.1	3.7	3.0	36.0
38.0											3.4	2.8		3.7	3.6	2.9	38.0
40.0												2.7			3.5	2.8	40.0
42.0																2.7	42.0
44.0																2.6	44.0
Reeves	1	1	1	1	1	1	1	1	1	1	1	1	1	1	1	1	Reeves

Boom length (m)	48.8				51.8				Boom length (m)
Jib length (m)	9.1	12.2	15.2	18.3	9.1	12.2	15.2	18.3	Jib length (m)
18.0	9.5				9.5				18.0
20.0	9.2	6.6	5.1		9.3	6.6			20.0
22.0	8.5	6.3	4.9	4.1	8.5	6.4	5.0		22.0
24.0	7.5	6.0	4.7	3.9	7.5	6.1	4.8	3.9	24.0
26.0	6.6	5.8	4.5	3.7	6.6	5.9	4.6	3.8	26.0
28.0	5.9	5.6	4.3	3.6	5.9	5.7	4.4	3.6	28.0
30.0	5.2	5.4	4.1	3.4	5.2	5.4	4.2	3.5	30.0
32.0	4.7	4.9	4.0	3.3	4.7	4.8	4.1	3.4	32.0
34.0	4.2	4.4	3.9	3.2	4.2	4.3	4.0	3.3	34.0
36.0	3.9	3.9	3.8	3.1	3.7	3.8	3.9	3.2	36.0
38.0	3.5	3.6	3.7	3.0	3.3	3.5	3.6	3.1	38.0
40.0		3.2	3.4	2.9	3.0	3.2	3.3	3.0	40.0
42.0		2.9	3.0	2.8		2.9	3.0	2.9	42.0
44.0			2.7	2.7		2.6	2.7	2.6	44.0
46.0				2.6			2.4	2.4	46.0
48.0				2.3				2.2	48.0
50.0								2.0	50.0
Reeves	1	1	1	1	1	1	1	1	Reeves

Note:
 Ratings according to EN13000.
 Ratings shown in are determined by the strength of the boom or other structural components.
 Refer to notes P12.



Crane Boom Lifting Capacity with Fixed Jib

Unit: metric ton

Counterweight: 29.3 t, Carbody weight: 7.3 t

Boom length (m)	24.4				27.4				30.5				33.5				Boom length (m)	
Jib length (m)	9.1	12.2	15.2	18.3	9.1	12.2	15.2	18.3	9.1	12.2	15.2	18.3	9.1	12.2	15.2	18.3	Jib length (m)	
Working radius (m)	4.0	4.7m/63.2	4.7m/62.8	4.7m/62.4	4.7m/61.9													4.0
	5.0	59.9	59.5	59.1	58.6	5.1m/47.6	5.1m/47.2	5.1m/46.8	5.1m/46.3	5.6m/46.3	5.6m/45.9	5.6m/45.5	5.6m/45.0					5.0
	6.0	46.6	46.2	45.8	45.3	44.7	44.3	43.9	43.4	42.8	42.4	42.0	41.5	41.0	40.6	40.2	39.7	6.0
	7.0	39.0	38.6	38.2	37.7	37.6	37.2	36.8	36.3	36.2	35.8	35.4	34.9	34.9	34.5	34.1	33.6	7.0
	8.0	33.5	33.1	32.7	32.2	32.4	32.0	31.6	31.1	31.2	30.8	30.4	29.9	30.2	29.8	29.4	28.9	8.0
	9.0	29.2	28.8	28.4	27.9	28.3	27.9	27.5	27.0	27.3	26.9	26.5	26.0	26.5	26.1	25.7	25.2	9.0
	10.0	25.8	25.4	25.0	24.5	25.1	24.7	24.3	23.8	24.2	23.8	23.4	22.9	23.5	23.1	22.7	22.2	10.0
	12.0	20.1	19.7	19.3	18.8	20.1	19.7	19.3	18.8	19.6	19.2	18.8	18.3	19.1	18.7	18.3	17.8	12.0
	14.0	16.1	15.7	15.3	14.8	16.1	15.7	15.3	14.8	15.9	15.5	15.1	14.6	15.8	15.4	15.0	14.5	14.0
	16.0	13.3	12.9	12.5	12.0	13.2	12.8	12.4	11.9	13.1	12.7	12.3	11.8	13.0	12.6	12.2	11.7	16.0
	18.0	11.2	10.8	10.4	9.9	11.1	10.7	10.3	9.8	10.9	10.5	10.1	9.6	10.9	10.5	10.1	9.6	18.0
	20.0	9.6	9.2	8.8	8.3	9.5	9.1	8.7	8.2	9.3	8.9	8.5	8.0	9.2	8.8	8.4	7.9	20.0
	22.0	8.3	7.9	7.5	7.0	8.2	7.8	7.4	6.9	8.0	7.6	7.2	6.7	7.9	7.5	7.1	6.6	22.0
	24.0	22.3m/8.1	22.3m/7.7	22.3m/7.3	22.3m/6.8	7.1	6.7	6.3	5.8	6.9	6.5	6.1	5.6	6.8	6.4	6.0	5.5	24.0
	26.0					24.9m/6.7	24.9m/6.3	24.9m/5.9	24.9m/5.4	6.0	5.6	5.2	4.7	6.0	5.6	5.2	4.7	26.0
	28.0									27.6m/5.5	27.6m/5.1	27.6m/4.7	27.6m/4.2	5.2	4.8	4.4	3.9	28.0
30.0													4.6	4.2	3.8	3.3	30.0	
32.0													30.2m/4.5	30.2m/4.1	30.2m/3.7	30.2m/3.2	32.0	
Reeves	6	6	5	5	4	4	4	4	4	4	4	4	4	4	4	4	Reeves	

Boom length (m)	36.6				39.6				42.7				45.7				Boom length (m)	
Jib length (m)	9.1	12.2	15.2	18.3	9.1	12.2	15.2	18.3	9.1	12.2	15.2	18.3	9.1	12.2	15.2	18.3	Jib length (m)	
Working radius (m)	6.0	6.4m/35.7	6.4m/35.3	6.4m/34.9	6.4m/34.4	6.8m/33.2	6.8m/32.8	6.8m/32.4	6.8m/31.9									6.0
	7.0	33.7	33.3	32.9	32.4	32.5	32.1	31.7	31.2	7.3m/30.1	7.3m/29.7	7.3m/29.3	7.3m/28.8	7.7m/26.4	7.7m/26.0	7.7m/25.6	7.7m/25.1	7.0
	8.0	29.2	28.8	28.4	27.9	28.2	27.8	27.4	26.9	27.3	26.9	26.5	26.0	26.2	25.8	25.4	24.9	8.0
	9.0	25.7	25.3	24.9	24.4	24.9	24.5	24.1	23.6	24.1	23.7	23.3	22.8	23.4	23.0	22.6	22.1	9.0
	10.0	22.9	22.5	22.1	21.6	22.2	21.8	21.4	20.9	21.5	21.1	20.7	20.2	20.9	20.5	20.1	19.6	10.0
	12.0	18.6	18.2	17.8	17.3	18.0	17.6	17.2	16.7	17.5	17.1	16.7	16.2	17.0	16.6	16.2	15.7	12.0
	14.0	15.5	15.1	14.7	14.2	15.0	14.6	14.2	13.7	14.5	14.1	13.7	13.2	14.2	13.8	13.4	12.9	14.0
	16.0	12.9	12.5	12.1	11.6	12.7	12.3	11.9	11.4	12.3	11.9	11.5	11.0	12.0	11.6	11.2	10.7	16.0
	18.0	10.8	10.4	10.0	9.5	10.6	10.2	9.8	9.3	10.5	10.1	9.7	9.2	10.3	9.9	9.5	9.0	18.0
	20.0	9.1	8.7	8.3	7.8	9.0	8.6	8.2	7.7	8.8	8.4	8.0	7.5	8.8	8.4	8.0	7.5	20.0
	22.0	7.8	7.4	7.0	6.5	7.7	7.3	6.9	6.4	7.5	7.1	6.7	6.2	7.4	7.0	6.6	6.1	22.0
	24.0	6.7	6.3	5.9	5.4	6.6	6.2	5.8	5.3	6.5	6.1	5.7	5.2	6.4	6.0	5.6	5.1	24.0
	26.0	5.9	5.5	5.1	4.6	5.7	5.3	4.9	4.4	5.6	5.2	4.8	4.3	5.5	5.1	4.7	4.2	26.0
	28.0	5.1	4.7	4.3	3.8	5.0	4.6	4.2	3.7	4.8	4.4	4.0	3.5	4.7	4.3	3.9	3.4	28.0
	30.0	4.5	4.1	3.7	3.2	4.3	3.9	3.5	3.0	4.2	3.8	3.4	2.9	4.1	3.7	3.3	2.8	30.0
	32.0	3.9	3.5	3.1	2.6	3.8	3.4	3.0	2.5	3.6	3.2	2.8	2.3	3.5	3.1	2.7	2.2	32.0
34.0	32.9m/3.7	32.9m/3.3	32.9m/2.9	32.9m/2.4	3.3	2.9	2.5	2.0	3.1	2.7	2.3	1.8	3.1	2.7	2.3	1.8	34.0	
36.0					35.5m/3.0	35.5m/2.6	35.5m/2.2	35.5m/1.7	2.7	2.3	1.9	1.4	2.6	2.2	1.8		36.0	
38.0									2.4	2.0	1.6		2.3	1.9	1.5		38.0	
40.0									38.1m/2.3	38.1m/1.9	38.1m/1.5		1.9	1.5			40.0	
42.0													40.8m/1.8	40.8m/1.4			42.0	
Reeves	3	3	3	3	3	3	3	3	3	3	3	3	3	3	3	3	Reeves	

Unit: metric ton

Counterweight: 29.3 t, Carbody weight: 7.3 t

Boom length (m)		48.8				51.8				Boom length (m)	
Jib length (m)		9.1	12.2	15.2	18.3	9.1	12.2	15.2	18.3	Jib length (m)	
Working radius (m)	8.0	8.1m/20.3	8.1m/19.9	8.1m/19.5	8.1m/19.0	8.5m/17.6	8.5m/17.2	8.5m/16.8	8.5m/16.3	8.0	Working radius (m)
	9.0	19.2	18.8	18.4	17.9	17.0	16.6	16.2	15.7	9.0	
	10.0	17.9	17.5	17.1	16.6	15.8	15.4	15.0	14.5	10.0	
	12.0	15.7	15.3	14.9	14.4	13.8	13.4	13.0	12.5	12.0	
	14.0	13.8	13.4	13.0	12.5	12.2	11.8	11.4	10.9	14.0	
	16.0	11.7	11.3	10.9	10.4	10.8	10.4	10.0	9.5	16.0	
	18.0	10.0	9.6	9.2	8.7	9.8	9.4	9.0	8.5	18.0	
	20.0	8.7	8.3	7.9	7.4	8.4	8.0	7.6	7.1	20.0	
	22.0	7.4	7.0	6.6	6.1	7.3	6.9	6.5	6.0	22.0	
	24.0	6.3	5.9	5.5	5.0	6.2	5.8	5.4	4.9	24.0	
	26.0	5.4	5.0	4.6	4.1	5.3	4.9	4.5	4.0	26.0	
	28.0	4.7	4.3	3.9	3.4	4.5	4.1	3.7	3.2	28.0	
	30.0	4.0	3.6	3.2	2.7	3.9	3.5	3.1	2.6	30.0	
	32.0	3.5	3.1	2.7	2.2	3.3	2.9	2.5	2.0	32.0	
	34.0	3.0	2.6	2.2	1.7	2.8	2.4	2.0	1.5	34.0	
	36.0	2.5	2.1	1.7	1.2	2.4	2.0	1.6		36.0	
38.0	2.2	1.8	1.4		2.0	1.6			38.0		
40.0	1.8	1.4			1.7				40.0		
42.0	1.5				1.4				42.0		
Reeves	2	2	2	2	2	2	2	2	2	Reeves	

Note:
 Ratings according to EN13000.
 Refer to notes P12.