

# TRANSPORTATION SPECS - Conventional Truck Cranes

## AMERICAN MODEL 4460 - 45 TON CAPACITY

<u>COMPONENT WEIGHTS</u>	<u>LBS.</u>	<u>KGS.</u>	<u>BOOM TYPE 47 40' MIN. / 150' MAX.</u>	<u>LBS.</u>	<u>KGS.</u>
Complete Crane c/w 40' Boom (incl. block & ball)	94,485	42 870	O.D. (tubular) 47 ½X 47 ½		
House, butt, carrier c/w outriggers (1)	75,000	34 029	Butt 20'	1,800	817
Counterweight	15,700	7 123	Tip 20' c/w Pendants	2,425	1 100
			Insert 10' c/w Pendants	750	340
			Insert 20' c/w Pendants	1,250	567
Certificate Weight		27 000	Insert 30' c/w Pendants (See boom & jib section for composition details)	1,900	862
<u>ADDITIONAL INFORMATION</u>			<u>JIB NO. 7HL 50' MAX.</u> (10' and 20' sections)		
45 Ton Block	910	413	OD (tubular) 27 ¾x 27 ¾	<u>LBS.</u>	<u>KGS.</u>
10 Ton Ball	450	204	50' c/w Pendants	1,525	692
Front Outrigger	1,000	454	<u>COUNTERWEIGHT TYPE – KM</u>		
Rear Outrigger	1,000	454	Main	15,700	7 123
Main Load Line (3/4" x 650')	676	307			
Auxiliary Hoist Line (3/4" x 450')	468	212			
Boom Suspension Line (5/8" x 385')	277	126			

## TRANSPORTATION

Average Driving Speed

50 km/hr

Boom and counterweights are normally removed and hauled separately. Boom may be hauled 2 wide and 2 high.

### Alberta

- Spring
- Summer
- Winter

### Weight

(1)  
(1)  
(1)

### Trailer

20 wh  
LW 16 wh  
Tridem

### British Columbia

- Spring and Summer
- Winter

(1)  
(1)

7-axle  
Tridem

### Saskatchewan\*

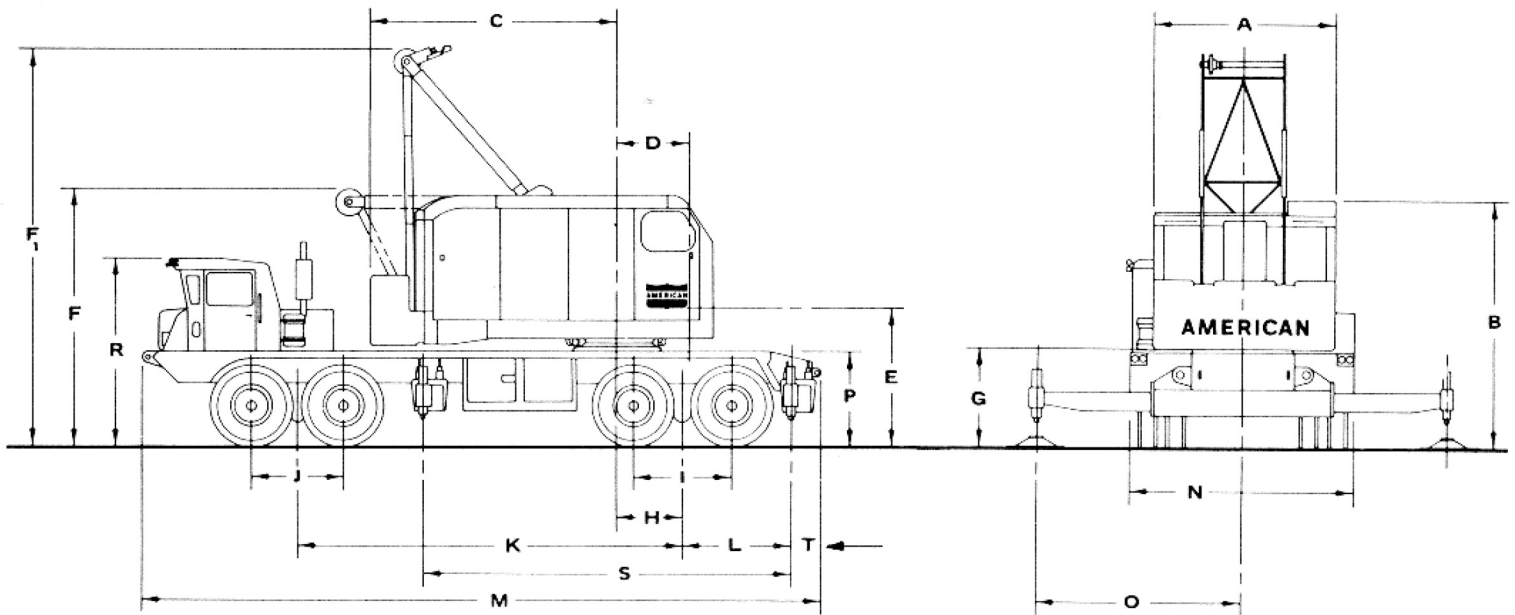
- Normally
- Road Ban Period

(1)  
(1)

Drive  
Drive-  
Restricted  
travel on  
some  
secondary  
roads

\*Yearly permit required.

# GENERAL DIMENSIONS



- |     |   |           |    |   |             |
|-----|---|-----------|----|---|-------------|
| A.  | Width of cab . . . . .  | 9'0"      | L. | Centerline of rear bogie to centerline of rear outrigger box . . . . .  | 5' 3-7/16"  |
| B.  | Height to top of cab . . . . .                                  | 12'1"     | M. | Overall length . . . . .  | 32' 2-1/2"  |
| C.  | Tail Swing . . . . .  | 11'5"     | N. | Overall width . . . . .   | 10'0"       |
| D.  | Centerline of rotation to centerline of boom foot . . . . .     | 3'0"      | O. | Outriggers extended w/screw jacks . . . . .                             | 9'10"       |
| E.  | Ground to centerline boom foot . . . . .                        | 5'10"     | O. | Outriggers extended w/hydraulic outriggers . . . . .                    | 9'0"        |
| F.  | Height over A-Frame (lowered) . . . . .                         | 12'4"     | P. | Height over mounting plate . . . . .                                    | 4'4"        |
| F1. | Height over A-Frame (raised) . . . . .                          | 17'3"     | R. | Height over carrier cab . . . . .                                       | 8' 10-1/4"  |
| G.  | Ground to bottom of counterweight . . . . .                     | 4'8"      | S. | Centerline of rear outrigger to centerline of front outrigger . . . . . | 16' 10-1/2" |
| H.  | Centerline of rotation to centerline of rear bogie . . . . .    | 3'2-1/16" | T. | Centerline of rear outrigger to rear of carrier . . . . .               | 1'0"        |
| I.  | Distance between rear axles . . . . .                           | 4'6"      |    | Turning radius . . . . .  | 54'0"       |
| J.  | Distance between front axles . . . . .                          | 4'6"      |    | Clearance (under rear equalizing beam) . . . . .                        | 12"         |
| K.  | Centerline of rear bogie to centerline of front bogie . . . . . | 18'4"     |    | Clearance (under rear differential) . . . . .                           | 13-3/4"     |

## AMERICAN 47S BOOM COMPOSITION

Boom Length In Feet	20 Ft. 47S Inner	10 Ft. 47S Center	20 Ft. 47S Center	30 Ft. 47S Center	20 Ft. 47S Outer
40	1	-	-	-	1
50	1	1	-	-	1
60	1	-	1	-	1
70	1	-	-	1	1
80	1	1	-	1	1
90	1	-	1	1	1
100	1	-	-	2	1
110	1	1	-	2	1
120	1	-	1	2	1
130	1	-	-	3	1
140	1	1	-	3	1
150	1	-	1	3	1

## AMERICAN 47H TUBULAR BOOM COMPOSITION

Boom Length In Feet	20 Ft. 47H Inner	10 Ft. 47H Center	20 Ft. 47H Center	30 Ft. 47H Center	20 Ft. 47H Outer
40	1	-	-	-	1
50	1	1	-	-	1
60	1	-	1	-	1
70	1	-	-	1	1
80	1	1	-	1	1
90	1	-	1	1	1
100	1	-	-	2	1
110	1	1	-	2	1
120	1	-	1	2	1
130	1	-	-	3	1
140	1	1	-	3	1
150	1	-	1	3	1
160	1	-	-	4	1

# AMERICAN BOOM – SECTION WEIGHTS

Boom Sections c/w Pendants	47" S Tubular		59" S & H Tubular		77" S & H Tubular		92" HT & HD Tubular	
	LBS.	KGS.	LBS.	KGS.	LBS.	KGS.	LBS.	KGS.
Butt (Inner)	1,819	825	2,403	1 090	4,409	2 000	8,488	3 850
10 Foot	706	320	948	430	1,422	645	1,808	820
20 Foot	1,235	560	1,713	777	2,447	1 110	3,550	1 610
30 Foot	1,885	855						
40 Foot			2,921	1 325				
50 Foot					5,457	2 475	5,953	2 700
50 Foot XHD							7,297	3 310
Transition			1,433	650	2,999	1 360		
Taper Tip	2,095	950	2,205	1 000	3,417	1 550	11,133	5 050
Hammerhead			2,800	1 270	6,041	2 740		
Load Block			1,488	675 (60T)				

JIB SECTIONS		LBS.	KGS.
#7HL	30 Foot Basic Jib Assembly	1,259	570
	10' Section	199	90
	20' Section	386	175
#9HL	40 Foot Basic Jib Assembly	1,720	780
	10' Section	199	90
	20' Section	386	175
#15	30 Foot Basic Jib Assembly	1,951	885
	10' Section	298	135
#16HL	40 Foot Basic Jib Assembly	2,624	1 190
	10' Section	243	110
	20' Section	518	235
#30	25 Foot Basic Jib Assembly	TBD	TBD
	10' Section	TBD	TBD