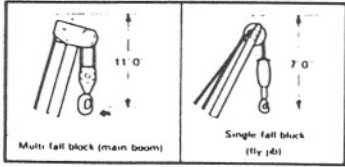
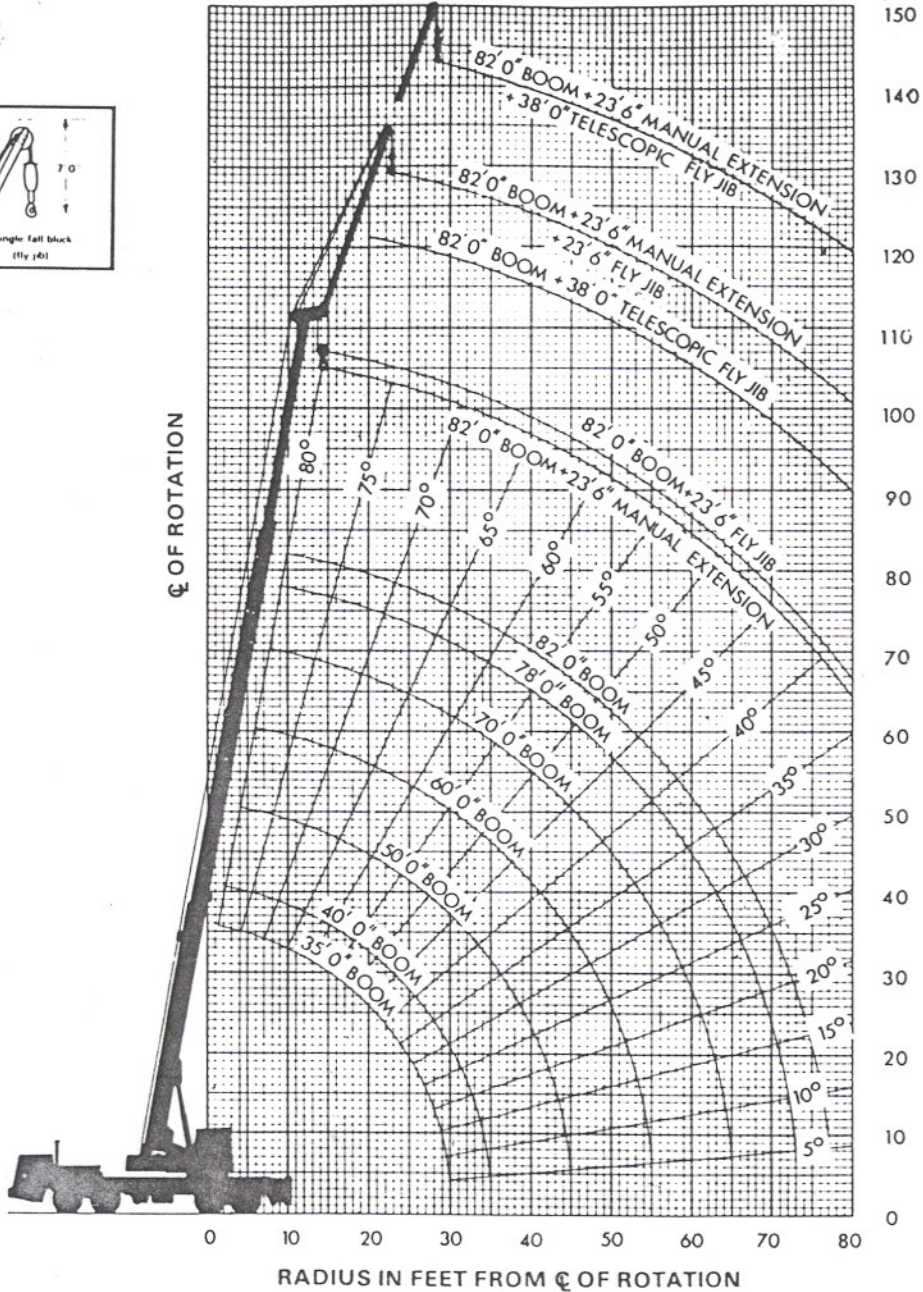


208
-56
-81

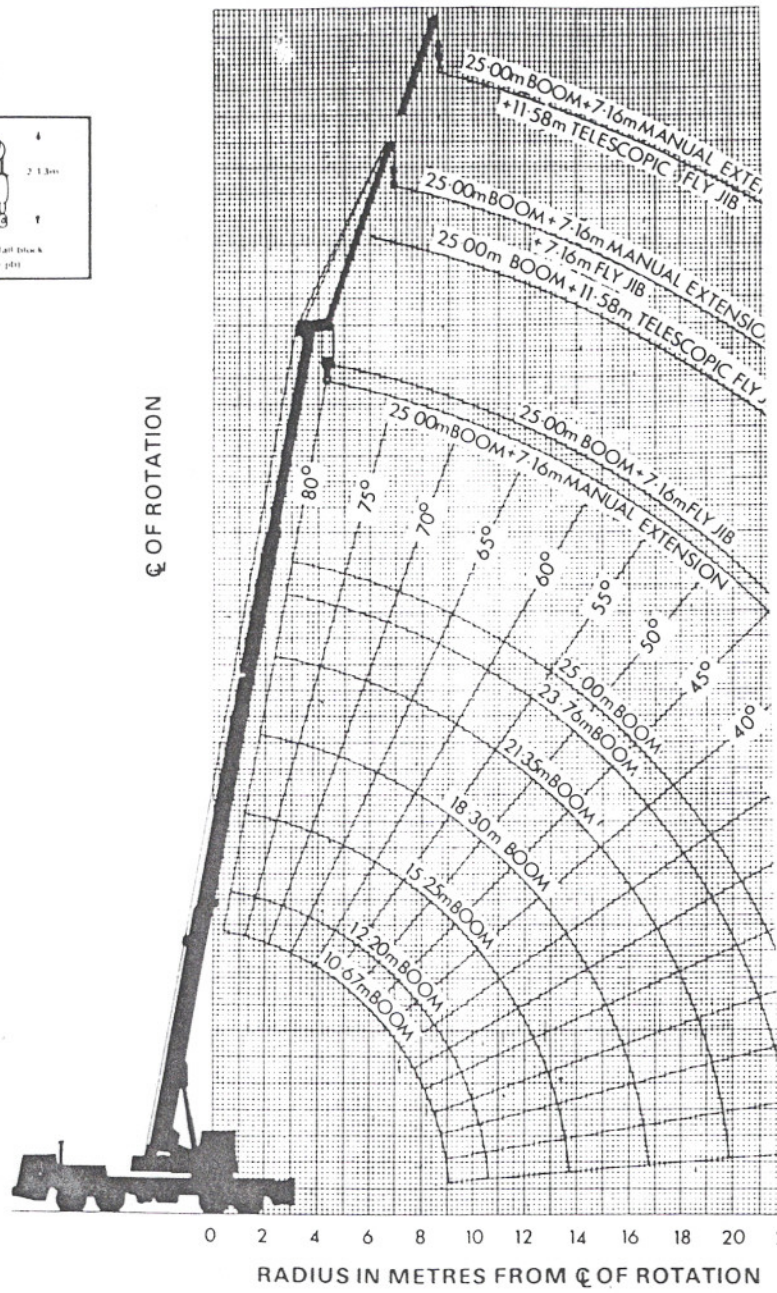
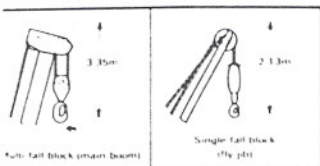
Coles 30/35



HEIGHT OF LIFT IN FEET



HEIGHT OF LIFT IN METRES

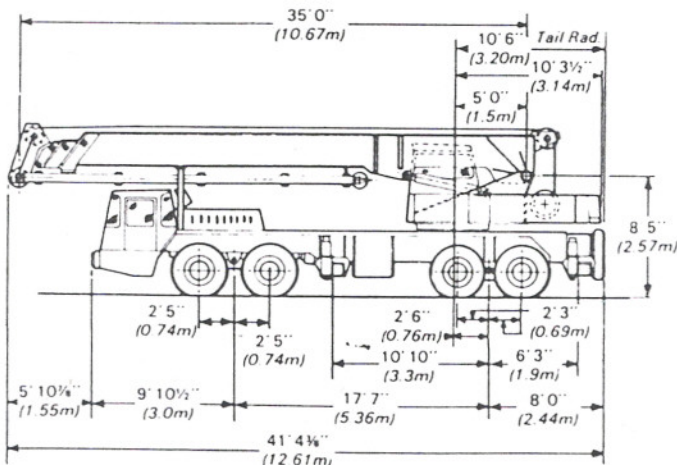


MAIN BOOM CAPACITIES IN KILOGRAMMES OVER SIDE AND REAR — with outriggers fully extended

| Radius in Metres | Boom Length | | | | | | | | | | 10.67m—25.0m Boom Fully telescoping Plus 7.16m Extension | | | |
|------------------------|---|------------------|------------------|-----------|------------------|-----------|-------------------|-----------|-------------------|-----------|--|-----------|------------------|--|
| | Manual Extension Section must be fully retracted for these duties | | | | | | | | | | | | | |
| | 10.67m— 12.2m | 12.2m— 15.25m | 15.25m— 18.3m | | 18.3m— 21.35m | | 21.35m— 23.76m | | 23.76m— 25.00m | | | | | |
| | over side & rear | | over side | over rear | over side | over rear | over side | over rear | over side | over rear | over side | over rear | Laden Boom Angle | |
| 3.00 | 30500 | 27000 | | | | | | | | | | | | |
| 3.50 | 27000 | 24500 | 23000 | 23000 | | | | | | | | | | |
| 4.50 | 21000 | 20500 | 19000 | 19000 | 16150 | 16150 | | | | | | | | |
| 6.00 | 15400 | 15400 | 15400 | 15400 | 13850 | 13850 | 10300 | 10300 | 8750 | 8750 | | | | |
| 7.50 | 11250 | 11250 | 11250 | 12430 | 10720 | 10720 | 8250 | 8250 | 7220 | 7220 | 4380 | 4380 | 77° | |
| 9.00 | | 7700 | 7800 | 10100 | 7750 | 7750 | 7320 | 7320 | 6180 | 6180 | 4120 | 4120 | 74° | |
| 10.50 | | 5770 | 5960 | 7700 | 5890 | 7000 | 5870 | 6420 | 5680 | 5680 | 3870 | 3870 | 71° | |
| 12.00 | | | 4520 | 6120 | 4520 | 5790 | 4520 | 5630 | 4520 | 4910 | 3580 | 3580 | 68° | |
| 15.00 | | | | | 2840 | 4030 | 2840 | 4030 | 2840 | 3980 | 2990 | 2990 | 62° | |
| 18.00 | | | | | | | 1830 | 2750 | 1830 | 2750 | 2165 | 2215 | 55° | |
| 21.00 | | | | | | | | | 1150 | 1830 | 1490 | 1540 | 48° | |
| 24.00 | | | | | | | | | | | 1030 | 1135 | 40° | |

FLY JIB CAPACITIES IN KILOGRAMMES OVER SIDE AND REAR — with outriggers fully extended

| Radius in Metres | 10.67m—25.0m Boom Fully telescoping Plus 7.16m Fly Jib at 10° Offset | | | 17.82m—32.15m Boom Fully telescoping Plus 7.16m Fly Jib at 10° Offset | | | 17.82m—32.15m Boom Fully telescoping Plus 7.16m Telescopic Fly Jib at 10° Offset | | | 17.82m—32.15m Boom Fully telescoping Plus 7.16m Telescopic Fly Jib at 10° Offset | | |
|------------------------|---|-----------|------------------|--|-----------|------------------|---|-----------|------------------|---|-----------|------------------|
| | over side | over rear | Laden Boom Angle | over side | over rear | Laden Boom Angle | over side | over rear | Laden Boom Angle | over side | over rear | Laden Boom Angle |
| 9.00 | 4120 | 4120 | 76° | | | | | | | | | |
| 10.50 | 3810 | 3810 | 73° | 1800 | 1800 | 77° | 1800 | 1800 | 77° | | | |
| 12.00 | 3500 | 3500 | 70° | 1630 | 1630 | 75° | 1630 | 1630 | 75° | | | |
| 13.50 | 3190 | 3190 | 67° | 1540 | 1540 | 73° | 1540 | 1540 | 73° | 1030 | 1030 | 76° |
| 15.00 | 2885 | 2885 | 64° | 1420 | 1420 | 70° | 1420 | 1420 | 70° | 920 | 920 | 74° |
| 18.00 | 2165 | 2265 | 57° | 1200 | 1200 | 65° | 1200 | 1200 | 56° | 770 | 770 | 69° |
| 21.00 | 1440 | 1645 | 50° | 1100 | 1100 | 59° | 1100 | 1100 | 59° | 670 | 670 | 64° |
| 24.00 | 930 | 1030 | 32° | 975 | 975 | 53° | 870 | 870 | 53° | 515 | 515 | 59° |



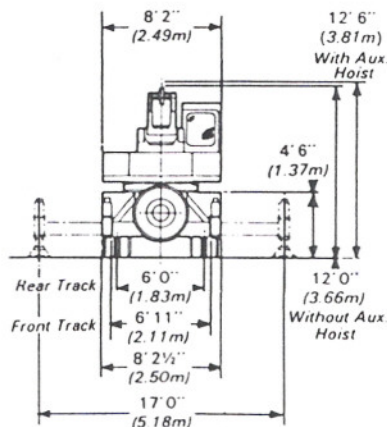
Note: Fitment of 12 00

MAIN BOOM CAPACITIES IN TONS OVER SIDE AND REAR — with outriggers fully extended

| Radius in Feet | Boom Length | | | | | | | | | | 35'0" — 82'0" Boom fully telescoping with 23'6" Extension | | |
|----------------------|---|---------------|---------------|-------|---------------|-------|---------------|-------|---------------|------|---|-----------|------------------|
| | Manual Extension Section must be fully retracted for these duties | | | | | | | | | | | | |
| | 35'0" — 40'0" | 40'0" — 50'0" | 50'0" — 60'0" | | 60'0" — 70'0" | | 70'0" — 78'0" | | 78'0" — 82'0" | | over side | over rear | Laden Boom Angle |
| 10'0" | 30.00 | 26.50 | | | | | | | | | | | |
| 12'0" | 25.50 | 23.50 | 22.00 | 22.00 | | | | | | | | | |
| 15'0" | 20.50 | 20.00 | 18.50 | 18.50 | 15.75 | 15.75 | | | | | | | |
| 20'0" | 15.00 | 15.00 | 15.00 | 15.00 | 13.50 | 13.50 | 10.00 | 10.00 | 8.50 | 8.50 | | | |
| 25'0" | 10.90 | 10.90 | 10.90 | 12.00 | 10.40 | 10.40 | 8.00 | 8.00 | 7.00 | 7.00 | 4.25 | 4.25 | 77° |
| 30'0" | | 7.40 | 7.50 | 9.75 | 7.35 | 7.35 | 7.10 | 7.10 | 6.00 | 6.00 | 4.00 | 4.00 | 74° |
| 35'0" | | 5.40 | 5.60 | 7.35 | 5.63 | 6.85 | 5.63 | 6.25 | 5.50 | 5.50 | 3.75 | 3.75 | 71° |
| 40'0" | | | 4.26 | 5.85 | 4.26 | 5.55 | 4.26 | 5.45 | 4.26 | 4.75 | 3.50 | 3.50 | 68° |
| 50'0" | | | | | 2.68 | 3.85 | 2.68 | 3.85 | 2.68 | 3.85 | 2.90 | 2.90 | 62° |
| 60'0" | | | | | | | 1.72 | 2.60 | 1.72 | 2.60 | 2.10 | 2.15 | 55° |
| 70'0" | | | | | | | | | 1.05 | 1.70 | 1.45 | 1.50 | 47° |
| 80'0" | | | | | | | | | | | 1.00 | 1.10 | 39° |

FLY JIB CAPACITIES IN TONS OVER SIDE AND REAR — with outriggers fully extended

| Radius in Feet | 35'0" — 82'0" Boom Fully telescoping Plus 23'6" Fly Jib at 10° Offset | | | 58'6" — 105'6" Boom Fully telescoping Plus 23'6" Fly Jib at 10° Offset | | | 58'6" — 105'6" Boom Fully telescoping Plus 23'6" Telescopic Fly Jib at 10° Offset | | | 58'6" — 105'6" Boom Fully telescoping Plus 40'0" Telescopic Fly Jib at 10° Offset | | |
|----------------------|---|-----------|------------------|--|-----------|------------------|---|-----------|------------------|---|-----------|------------------|
| | over side | over rear | Laden Boom Angle | over side | over rear | Laden Boom Angle | over side | over rear | Laden Boom Angle | over side | over rear | Laden Boom Angle |
| 30'0" | 4.00 | 4.00 | 76° | | | | | | | | | |
| 35'0" | 3.70 | 3.70 | 73° | 1.75 | 1.75 | 77° | 1.75 | 1.75 | 77° | | | |
| 40'0" | 3.40 | 3.40 | 70° | 1.60 | 1.60 | 75° | 1.60 | 1.60 | 75° | | | |
| 45'0" | 3.10 | 3.10 | 67° | 1.50 | 1.50 | 73° | 1.50 | 1.50 | 73° | 1.00 | 1.00 | 76° |
| 50'0" | 2.80 | 2.80 | 64° | 1.40 | 1.40 | 70° | 1.40 | 1.40 | 70° | 0.90 | 0.90 | 74° |
| 60'0" | 2.10 | 2.25 | 57° | 1.20 | 1.20 | 65° | 1.20 | 1.20 | 65° | 0.75 | 0.75 | 69° |
| 70'0" | 1.40 | 1.40 | 49° | 1.10 | 1.10 | 59° | 1.10 | 1.10 | 59° | 0.65 | 0.65 | 64° |
| 80'0" | 0.90 | 1.00 | 30° | 0.95 | 0.95 | 53° | 0.85 | 0.85 | 53° | 0.50 | 0.50 | 59° |



P.R. tyres increases heights by 1" (0.02m)