

Zoom Boom by **CareLift**[®]



ZB10056

- 10,000 lb. capacity
- 56 ft. lifting height

S U P E R I O R R E A C H

ZOOM BOOM Model ZB10056

DIMENSIONS

Wheelbase	120"	304 cm
Overall width	101"	256 cm
Overall height	94"	239 cm
Length less forks	239"	607 cm
Ground clearance	17"	43 cm
Total weight (approx.)	32,400 lb	14,700 kg
Turn radius	158"	401 cm
Frame level	+/-8 Degrees	

SPECIFICATIONS

Engine	Cummins, QSB 4.5 electronic, turbocharged diesel, 110 horsepower @ 2500 rpm
Transmission	Electronic powershift, 4 speed forward and 2 speed reverse, Speed range - 4.3-20.3 mph 7-34 km/hr
Axles	Steerable outboard planetary
Brakes	Service - Differential mounted wet disc brakes - both axles Parking - Differential mounted S.A.H.R. wet disc on front axle
Tire	14.00 x 24 - 12 ply grader lug tubeless
Steering	2 wheel, 4 wheel, crab
Boom	4 section, welded construction Maximum lift height- 55' 10" - 1702 cm Maximum forward reach - 41' - 1250 cm Dual shaft type carriage Carriage rollback - 22 degrees Carriage forward tilt - 79 degrees
Forks	2 1/4" x 4" x 48" 5.1 cm x 10.2 cm x 122 cm
General	Fuel/hydraulic oil tank - 41 US gal - 155L Hydraulic pump - 39 gpm @ governed rpm 12 volt - 95 amp. alternator

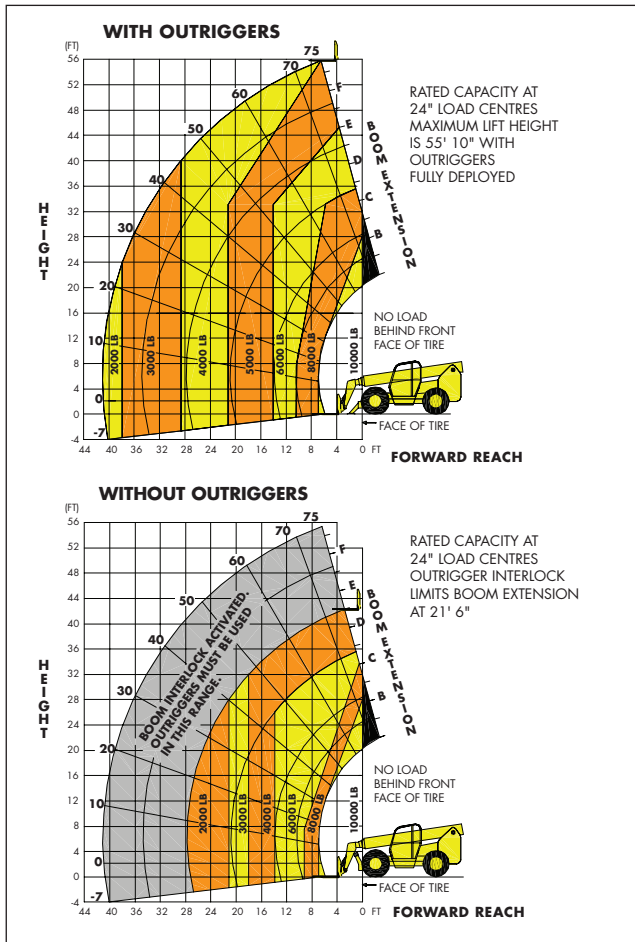
STANDARD EQUIPMENT

- Pilot-operated joystick boom & frame level controls
- 4 wheel power steering
- Electronic dash and full gauge instrumentation
- Hydraulic frame leveling
- Automatic self-leveling forks
- Engine block heater
- Quick disconnect carriage
- ROPS/FOPS operator compartment
- Lockable fuel cap and engine compartment
- Service and park brake activated transmission disconnect
- Anti-restart keyed ignition switch with neutral start
- Swing up engine doors
- Tilt adjustment of console mounted joystick controls
- Right-hand arm rest
- Outriggers with boom interlock
- Adjustable suspension seat
- Anti-freeze
- Retractable seat belt
- Central frame tilt lubrication
- Electric horn
- Anti-skid floor and steps
- Reverse warning alarm
- Yellow paint with black trim
- Overcentre lock valves on all hydraulic functions
- Electronic foot throttle
- External rear view mirrors
- Two stage air cleaner
- 4 wheel drive
- Automatically activated spring parking brake
- Rear axle "stable-lock" cylinder
- Tank mounted return filter
- Tank mounted hydraulic sump pickup filter
- Rubber isolated cab mount

OPTIONAL EQUIPMENT

- Various carriage/fork sizes
- Turn signals/lights
- Working lights
- Flashing beacon
- Fork positioner
- Auxiliary hydraulics
- Enclosed operator cab
- Side tilt carriage
- Swing carriage
- Dual batteries
- Material bucket
- Winch
- 15' Jib boom
- Foam filled tires
- Fenders
- Air conditioning
- Mine code specification

CAPACITY CHARTS



- Machine design complies with ASME/ANSI B56.6 stability requirements for rough terrain forklifts.
- For attachments consult factory for load rating.
- Read boom angle and boom extension, then determine allowable load from chart.
- Figures shown are stacking capacity with truck level on a firm surface and with properly inflated tires.
- Do not exceed rated loads as dangerous and unstable machine conditions will result.

IMPORTANT

- All capacities rated on firm ground, with the machine steered straight and frame level.
- Always travel with boom retracted in the lowest possible position.
- Never position fork carriage behind front face of tire.

Note: Materials and specifications are subject to change without notice.

ZOOM BOOM
by CareLift®

Extending ourselves for you.

CareLift Equipment Limited
5111 Fountain St. N., P.O. Box 250 Breslau, Ontario N0B 1M0
Tel: (519) 648-2282 • Toll Free: 1-800-870-0441
Fax: (519) 648-3434 • Website: www.carelift.com