

KRUPP KMK 5110

Hook Elevation Diagram

Main boom and lattice extension - 79 ft./52 ft./32 ft. 0 - 16 - 30° offsets

32.6 * lbs.
Counterweight

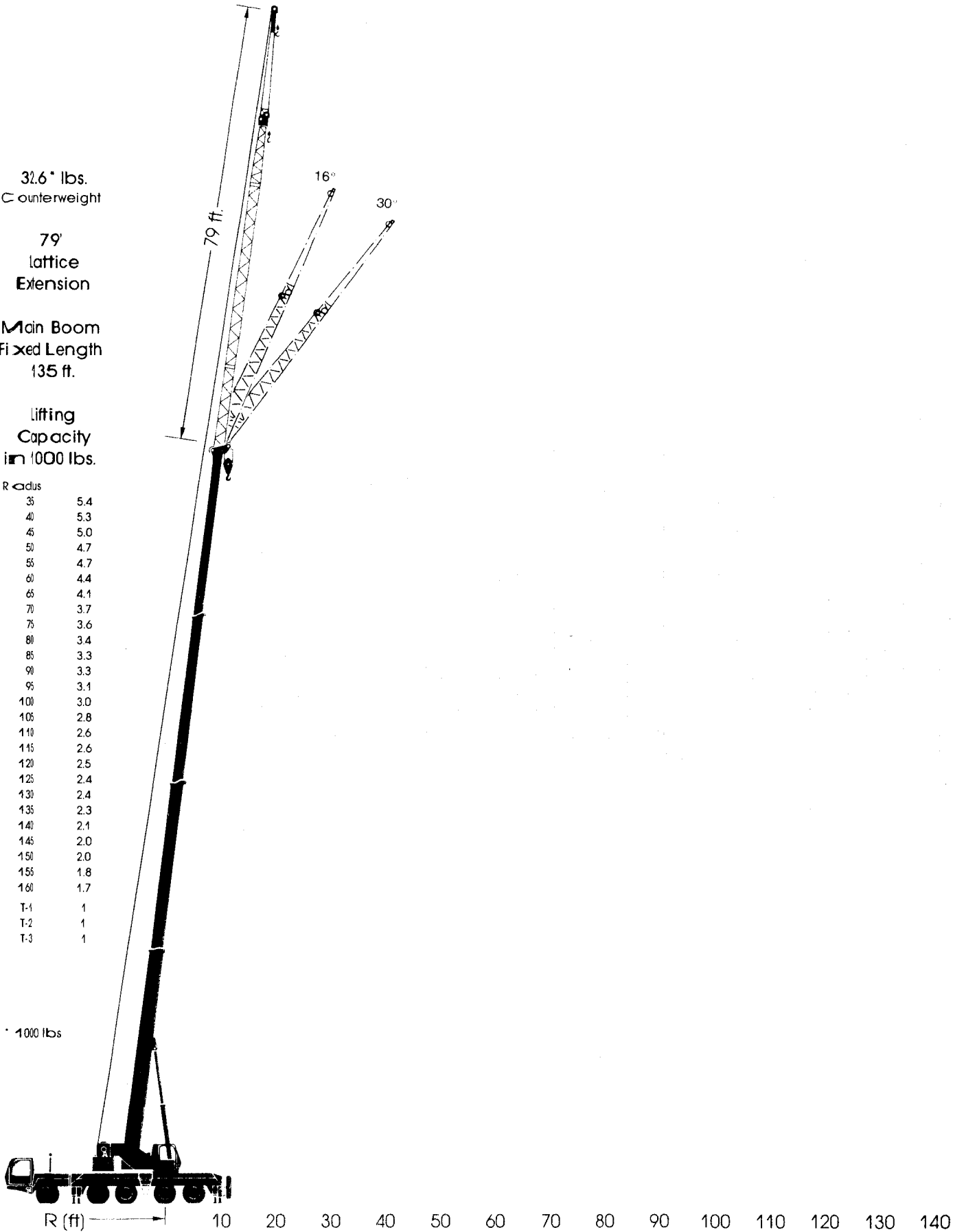
79'
lattice
Extension

Main Boom
Fixed Length
135 ft.

Lifting
Capacity
in 1000 lbs.

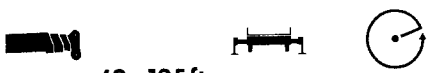
Radius	
35	5.4
40	5.3
45	5.0
50	4.7
55	4.7
60	4.4
65	4.1
70	3.7
75	3.6
80	3.4
85	3.3
90	3.3
95	3.1
100	3.0
105	2.8
110	2.6
115	2.6
120	2.5
125	2.4
130	2.4
135	2.3
140	2.1
145	2.0
150	2.0
155	1.8
160	1.7
T-1	1
T-2	1
T-3	1

* 1000 lbs

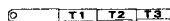
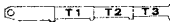


Main boom

Lifting capacities in 1000 lbs



42-135 ft **360°** **Counterweight 32,6* lbs**

Radius ft	42 ft	57 ft	73 ft	73 ft	73 ft	104 ft	104 ft	135 ft	Radius ft
10**	250.0								10*
10*	220.0								10
10	192.6	146.7							15
15	152.2	146.7							20
20	115.7	113.9	87.3	101.5	67.9	63.1	38.8		25
25	90.1	88.4	86.9	86.9	66.9	59.5	38.8		30
30	72.6	71.0	72.0	70.0	58.7	52.2	35.7	34.0	35
35		58.8	59.8	57.9	52.7	46.5	31.2	33.2	40
40		48.7	50.1	47.5	48.0	41.9	27.7	30.2	45
45		39.7	41.0	38.5	43.4	38.1	25.2	27.6	50
50			34.1	31.8	36.4	33.7	23.3	25.4	55
55			28.8	26.7	31.0	28.5	22.0	23.5	60
60			24.7	22.7	26.7	24.4	21.1	21.9	65
65			20.4	18.3	22.4	21.0	20.5	20.4	70
70						18.2	20.1	19.2	75
75						15.8	19.7	18.1	80
80						13.8	18.3	16.1	85
85						12.0	16.5	14.2	90
90						10.4	14.9	12.7	95
95						8.9	13.5	11.2	100
100								10.0	105
105								8.8	110
110								7.8	115
115								6.9	120
120								6.0	120
 T1	0	0.5	0.5	1	0	1	0	1	T1 
% T2	0	0	0.5	0	1	1	1	1	T2
T3	0	0	0	0	0	0	1	1	T3

*over rear only
**with special lifting attachment

*1000 lbs

Notes for lifting capacities

Load capacities above bold line are based on structural strength, and tipping must not be relied upon as a limitation of lifting capacity.

Rated loads must not be exceeded.

Rated loads do not exceed 85% of tipping load with the machine properly levelled on firm ground.

360° duties – on outriggers fully extended.

Note counterweight required as listed in relevant lifting capacity columns.

For safe crane operation due allowance must be made to compensate for high winds, side load, pendulum action and other hazardous conditions. No side pull permitted.

Hook blocks, slings and / or boom attachments are considered part of load, and their weight must be deducted from the rated lifting capacity to determine the net load.

Boom must be extended in accordance with sequence as noted on lifting capacity chart.

Consult crane manual to determine weight reduction for load handling devices and boom attachments.

Operate crane strictly in compliance with operator's manual.

Main boom + swing-away extension

Lifting capacities in 1000 lbs



33-52 ft

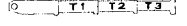
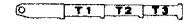


360°

Counterweight **32.6*** lbs

Main boom length 135 ft

Radius ft	Lattice extension length 33 ft		Lattice extension length 52 ft		Radius ft
	167 ft 0°	166 ft 16°	186 ft 0°	185 ft 16°	
30	18.2		9.7		30
35	18.2		9.7		35
40	18.2	14.6	9.7		40
45	18.2	14.5	9.7		45
50	18.2	13.9	9.7	7.3	50
55	17.7	13.3	9.7	7.3	55
60	17.0	12.7	9.6	7.3	60
65	16.2	12.2	9.3	7.3	65
70	15.5	11.7	8.9	7.3	70
75	14.8	11.2	8.6	7.2	75
80	14.2	10.7	8.3	7.0	80
85	13.5	10.3	8.1	6.9	85
90	12.8	9.9	7.8	6.7	90
95	12.2	9.5	7.6	6.6	95
100	11.3	9.1	7.3	6.5	100
105	10.1	8.7	7.1	6.4	105
110	9.1	8.4	6.9	6.3	110
115	8.1	8.1	6.8	6.2	115
120	7.3	7.3	6.6	6.1	120
125	6.5	6.5	6.4	6.0	125
130	5.7	5.7	6.3	5.9	130
135	4.9	4.9	5.8	5.8	135
140	4.2	4.2	5.1	5.1	140
145	3.6	3.6	4.4	4.4	145
150	3.0	3.0	3.8	3.8	150
155	2.4	2.4	3.3	3.3	155
160			2.7	2.7	160
T1	1	1	1	1	T1
T2	1	1	1	1	T2
T3	1	1	1	1	T3



33-52 ft

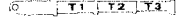
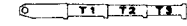


360°

Counterweight **32.6*** lbs

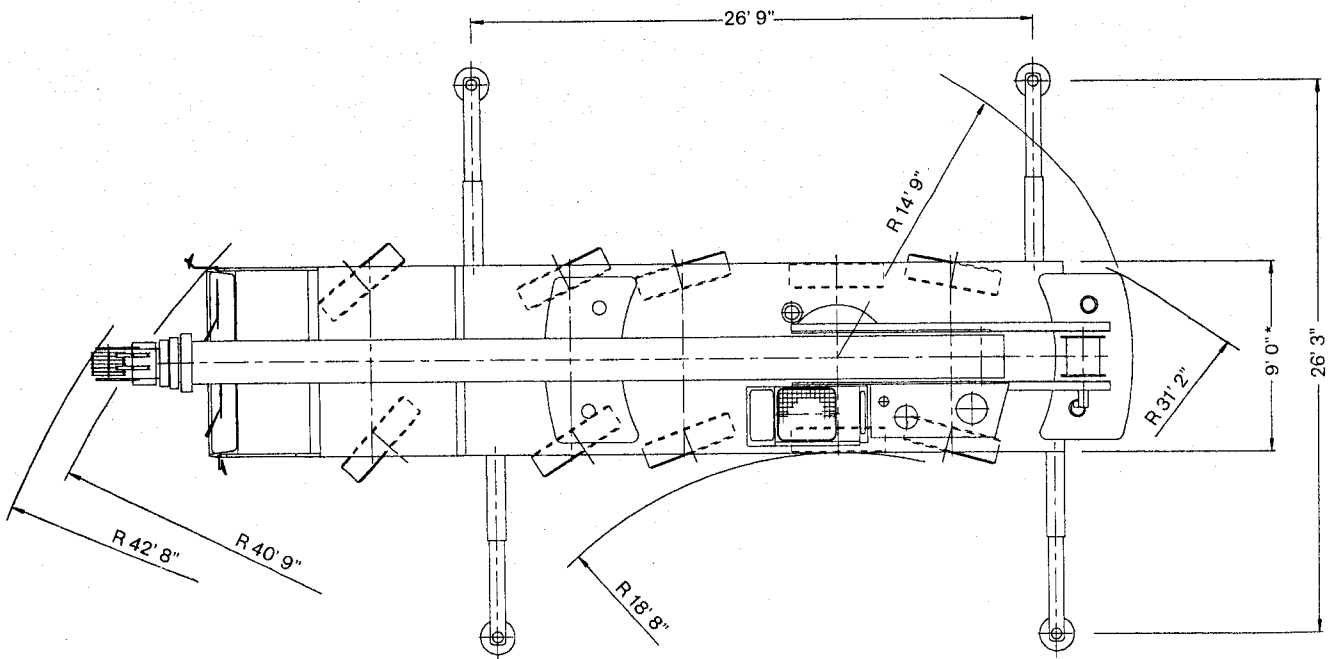
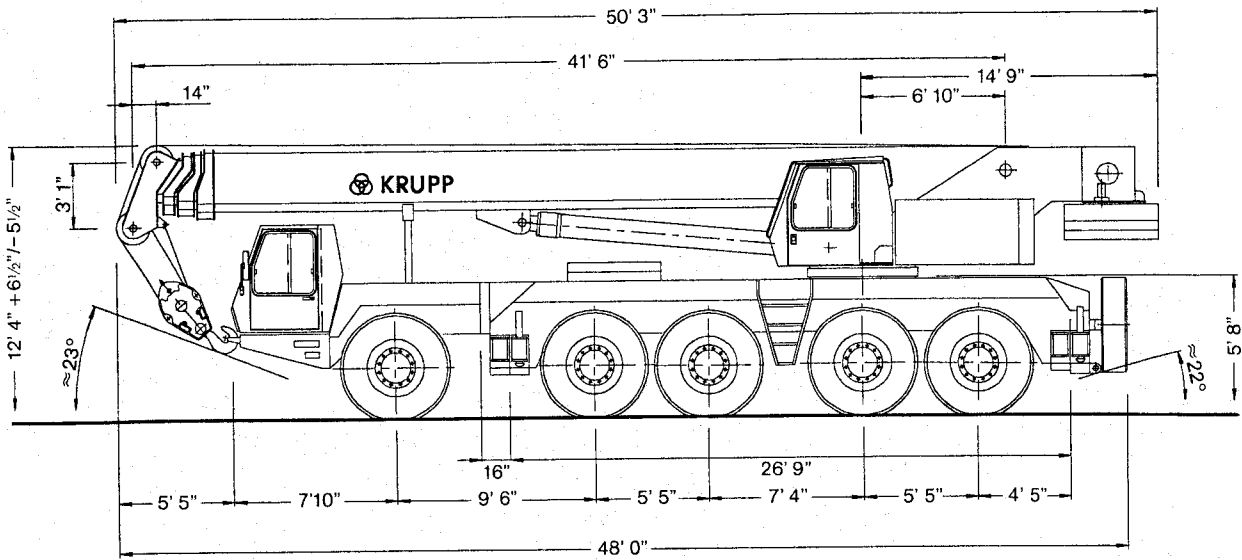
Main boom length 120 ft

Radius ft	Lattice extension length 33 ft		Lattice extension length 52 ft		Radius ft
	152 ft 0°	151 ft 16°	171 ft 0°	169 ft 16°	
25	23.0				25
30	23.0		12.1		30
35	23.0	17.0	12.1		35
40	22.9	17.0	12.1		40
45	21.8	17.0	11.7		45
50	20.8	16.4	11.1	8.5	50
55	19.9	15.7	10.6	8.5	55
60	19.1	15.0	10.1	8.2	60
65	18.3	14.3	9.6	7.9	65
70	17.5	13.7	9.2	7.6	70
75	16.8	13.1	8.8	7.4	75
80	16.1	12.5	8.5	7.1	80
85	15.1	11.9	8.1	6.9	85
90	13.5	11.4	7.9	6.7	90
95	12.0	10.9	7.6	6.5	95
100	10.8	10.5	7.4	6.4	100
105	9.6	9.6	7.2	6.3	105
110	8.6	8.6	7.0	6.2	110
115	7.6	7.6	6.8	6.1	115
120	6.8	6.8	6.7	6.0	120
125	5.9	5.9	6.5	5.9	125
130	5.1	5.1	6.2	5.9	130
135	4.3	4.3	5.4	5.4	135
140			4.7	4.7	140
145			4.1	4.1	145
150			3.5	3.5	150
155			2.9	2.9	155
T1	1	1	1	1	T1
T2	1	1	1	1	T2
T3	0.5	0.5	0.5	0.5	T3



*1000 lbs

Dimensions



* with 14.00 R 25 tires