

**SPECIFICATION SHEET**

**TYPE:** The Crane shall be a Pedestal type.

**CAPACITY:** The Crane shall have a designated lifting capacity of 2000 lbs.

**BOOM HEIGHT:** The Boom shall be a 15 position manually adjustable boom, with up to 84" of lifting height. (Based on standard 24" pedestal height)

**BOOM LENGTH:** The Boom shall have a adjustable length of 52" to 72" in three stages.

**ROTATION:** The Crane shall have a 360-degree manual rotation on machined surfaces, with two needle bearings and one thrust bearing that are environmentally sealed.

**HOIST:** The Hoist Motor shall be 12 volt D.C. powered, with a dual internal breaking system. Hoist shall have power up and power down.

**CABLE:** The Cable shall be 25' X 7/32" in diameter galvanized aircraft quality cable, with a single line breaking strength of 5600 lbs., and a safety hook.

**CONTROL:** A Hand Held Pendant Control, 10 feet in length, shall be furnish for controlling the hoisting function and it shall be 12-volt D.C. powered. Pendant Control shall be weather resistant, with a solid rubber grip.

**POWER SOURCE:** The Power Source shall be the vehicles own 12-volt D.C. battery.

**MOUNTING:** The Crane shall have a 12" x 12" mounting base with a 9" square bolt pattern, 1/2" Grd. 8 Bolts.

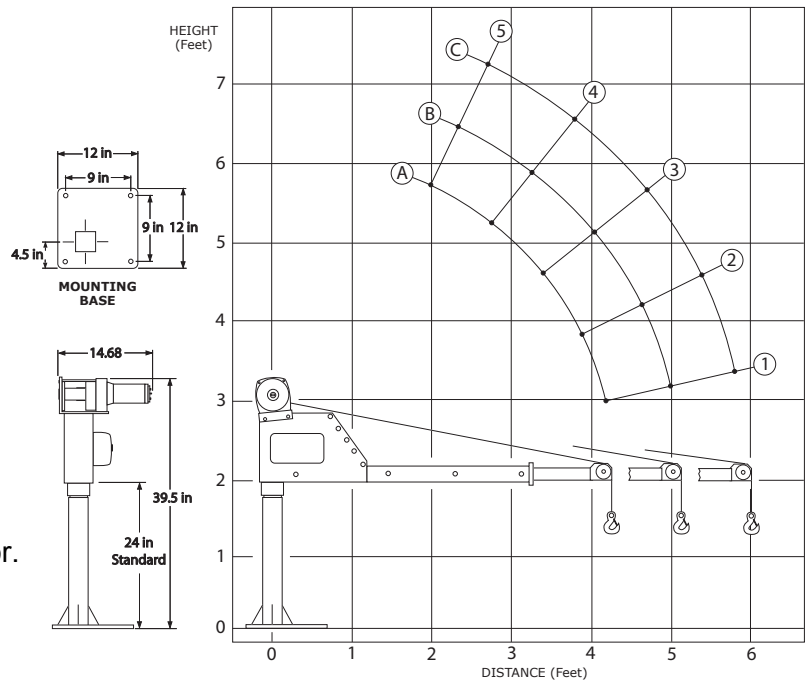
**WIRING:** The Crane shall be pre-wired from the factory and tested. The crane shall be provided with 25' of 4-gauge power cable and 10' of 4 gauge ground cable. The entire electrical system shall be circuit breaker protected.

**SAFETY:** The Crane shall be designed and manufactured according to the applicable ANSI standards for mobile cranes. The Crane shall be clearly marked with Maximum Load & Warning Decals.

**DOCUMENTATION:** The Crane shall be furnished with detailed Installation Instructions, Operation and Safety Instructions, Parts List, and Maintenance Instructions.

**FINISH COATING:** The Crane shall be finished with a durable Powder Coating, light gray in color.

**WARRANTY:** Manufacturer shall warrant the materials and workmanship for a period of one year from the date of delivery (excluding cable).



OPTIONS AND ACCESSORIES ARE AVAILABLE FOR THIS MODEL



**LOAD CHART**

Boom Position	A	B	C
5	2000	1800	1420
4	2000	1620	1265
3	1750	1395	1075
2	1500	1155	880
1	1280	925	695