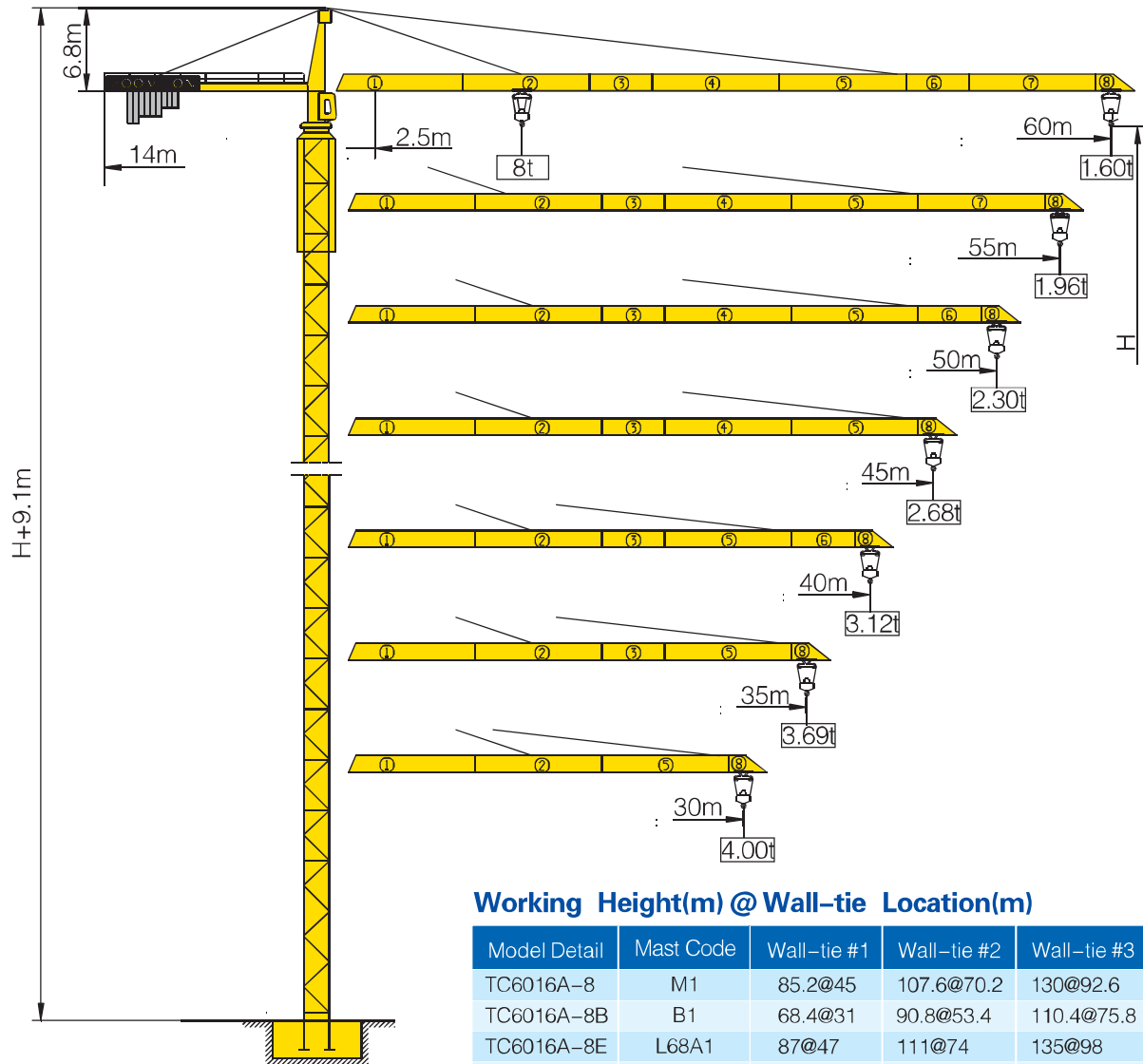


TC6016A-8



Counter-jib ballast

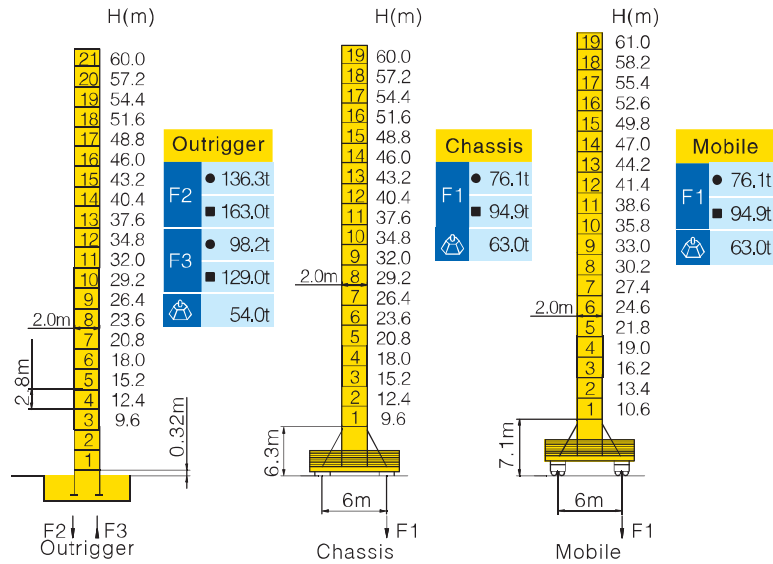
			(Kg)	PHZ3000	PHZ1950	PHZ1650
60m	14m	18750	2	4	3	
55m	14m	16800	2	3	3	
50m	14m	14850	2	2	3	
45m	14m	13200	2	2	2	
40m	14m	11550	2	2	1	
35m	14m	9600	2	1	1	
30m	14m	7650	2	0	1	

Working Height(m) @ Wall-tie Location(m)

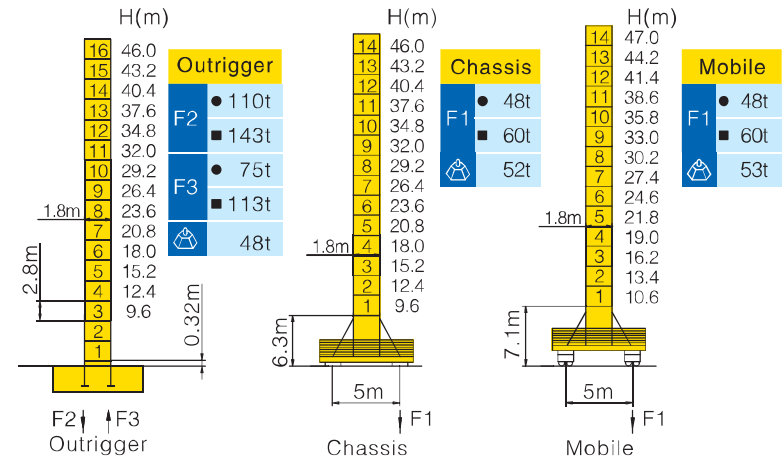
Model Detail	Mast Code	Wall-tie #1	Wall-tie #2	Wall-tie #3	Wall-tie #4	Wall-tie #5	Wall-tie #6	Wall-tie #7	Wall-tie #8	Wall-tie #9
TC6016A-8	M1	85.2@45	107.6@70.2	130@92.6	152.4@115	174.8@137.4	197.2@159.8	200@182.2	—	—
TC6016A-8B	B1	68.4@31	90.8@53.4	110.4@75.8	130@95.4	149.6@115	169.2@134.6	188.8@154.2	208.4@173.8	220@193.4
TC6016A-8E	L68A1	87@47	111@74	135@98	159@122	183@146	200@170	—	—	—
TC6016A-8F	L46A1	66@33	90@57	114@81	138@105	162@129	186@153	207@174	—	—

Masts Reactions

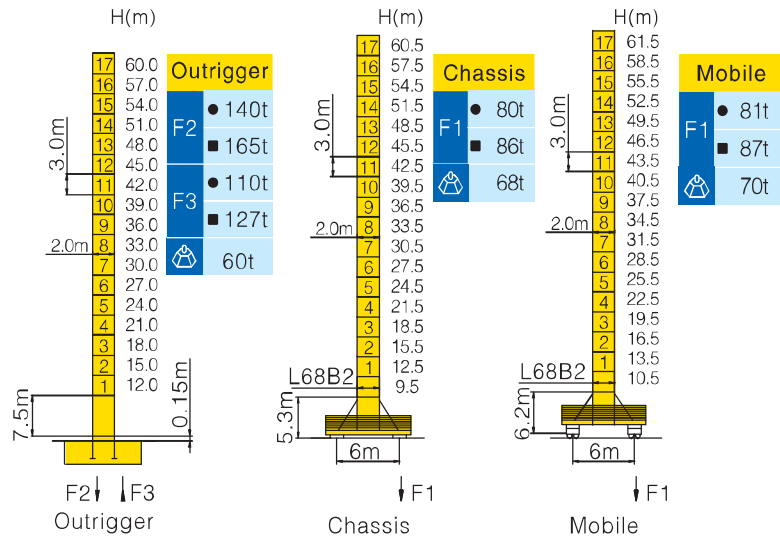
TC6016A-8



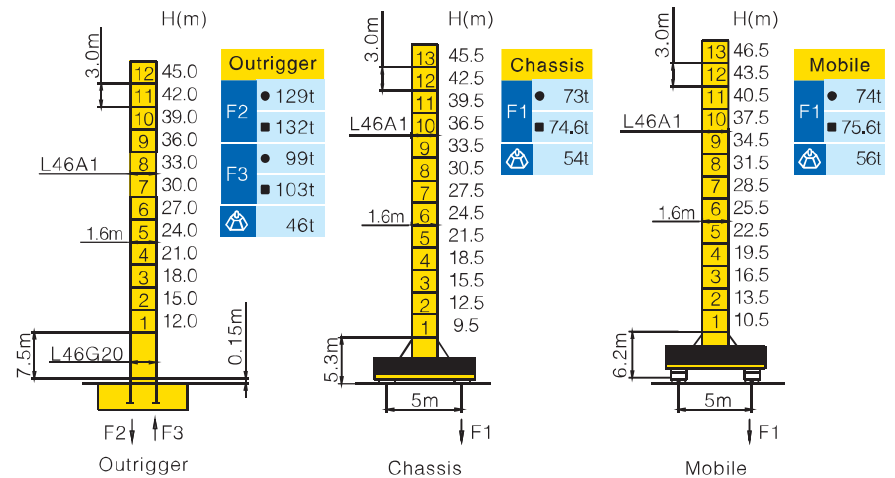
TC6016A-8B



TC6016A-8E




TC6016A-8F

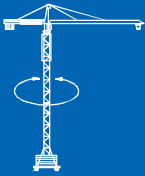
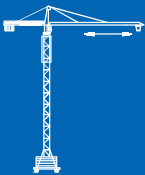
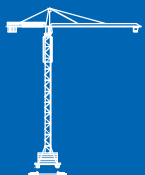


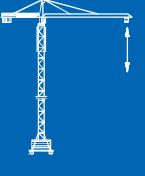

● Reactions in service ■ Reactions out of service
 ⊕ Without load and ballast with longest jib and maximum height
 ⊕ For more erecting solutions, consult us!

Load diagrams

		Max.Capacity m/t	17	20	22	25	28	30	32	35	38	40	42	45	48	50	52	55	58	60
60m (R=61.74)	♭	2.5-30.16m 4t	4.00						3.72	3.33	2.99	2.80	2.63	2.40	2.20	2.08	1.97	1.82	1.68	1.60
	♭♭	2.5-16.60m 8t	7.78	6.43	5.74	4.92	4.28	3.93	3.62	3.23	2.89	2.70	2.53	2.30	2.10	1.98	1.87	1.72	1.58	1.50
55m (R=56.74)	♭	2.5-31.78m 4t	4.00						3.97	3.55	3.20	3.00	2.82	2.58	2.36	2.24	2.12	1.96		
	♭♭	2.5-17.47m 8t	8.00	6.83	6.10	5.24	4.65	4.19	3.87	3.45	3.10	2.90	2.72	2.48	2.26	2.14	2.02	1.86		
50m (R=51.74)	♭	2.5-32.44m 4t	4.00						3.64	3.29	3.08	2.89	2.65	2.43	2.30					
	♭♭	2.5-17.82m 8t	8.00	6.99	6.25	5.37	4.68	4.30	3.97	3.54	3.19	2.98	2.79	2.55	2.33	2.20				
45m (R=46.74)	♭	2.5-32.75m 4t	4.00						3.69	3.33	3.12	2.93	2.68							
	♭♭	2.5-17.99m 8t	8.00	7.07	6.32	5.43	4.73	4.35	4.02	3.59	3.23	3.02	2.83	2.58						
40m (R=41.74)	♭	2.5-32.76m 4t	4.00						3.69	3.33	3.12									
	♭♭	2.5-18.00m 8t	8.00	7.07	6.32	5.43	4.73	4.35	4.02	3.59	3.23	3.02								
35m (R=36.74)	♭	2.5-32.78m 4t	4.00						3.69											
	♭♭	2.5-18.00m 8t	8.00	7.08	6.33	5.43	4.74	4.35	4.02	3.59										
30m (R=31.74)	♭	2.5-30.00m 4t	400																	
	♭♭	2.5-18.03m 8t	8.00	7.09	6.34	5.44	4.74	4.36												

Mechanisms

	Slewing	HPW55B.130
	0~0.8 r/min	2×5.5 kW
	Trolleying	BP40B
	0~55 m/min	4.0 kW
	Travelling	ZA52A-D ZC52A-D
	0~25 m/min	2×5.2 kW

Hoisting					QE8100D2
 37 kW	IV	b	4t	50 m/min	
		bb	8t	25 m/min	
 610m ∅ (6 layers) ① Consult us If overtop	V	b	2t	100 m/min	
		bb	4t	50 m/min	

	380V(+10%~10%)50Hz	52.0+2×5.2 kW
-------------------------------------------------------------------------------------	--------------------	---------------

For more mechanisms optional, consult us!