

PECCO

Specifications

Tower Crane

Model:
PC1400

Maximum Reach,
148 feet

Maximum Lift Capacity,
27,500 pounds



PECCO

specifications

Loads and Speeds

105 HP AC drive unit
with 4 speed remote controlled gear box.*

Gear	2-Part Trolley		4-Part Trolley	
	Maximum Load	Maximum Speed	Maximum Load	Maximum Speed
1	22,000 lbs.	100 fpm	27,500 lbs	50 fpm
2	15,000 lbs	200 fpm	27,500 lbs	100 fpm
3	9,500 lbs	300 fpm	19,000 lbs	150 fpm
4	5,500 lbs	500 fpm	11,000 lbs	250 fpm

177 HP Ward-Leonard drive unit
with 2 speed remote controlled gear box.*

Gear	2-Part Trolley		4-Part Trolley	
	Maximum Load	Maximum Speed	Maximum Load	Maximum Speed
1	N 22,000 lbs	140 fpm	27,500 lbs	70 fpm
	F 14,000 lbs	250 fpm	27,500 lbs	125 fpm
2	N 9,900 lbs	360 fpm	19,800 lbs	180 fpm
	F 5,000 lbs	710 fpm	10,000 lbs	355 fpm

N = normal operation; F = field weakening operation

*Certain crane models are equipped with different drives, always check appropriate capacity and speed.

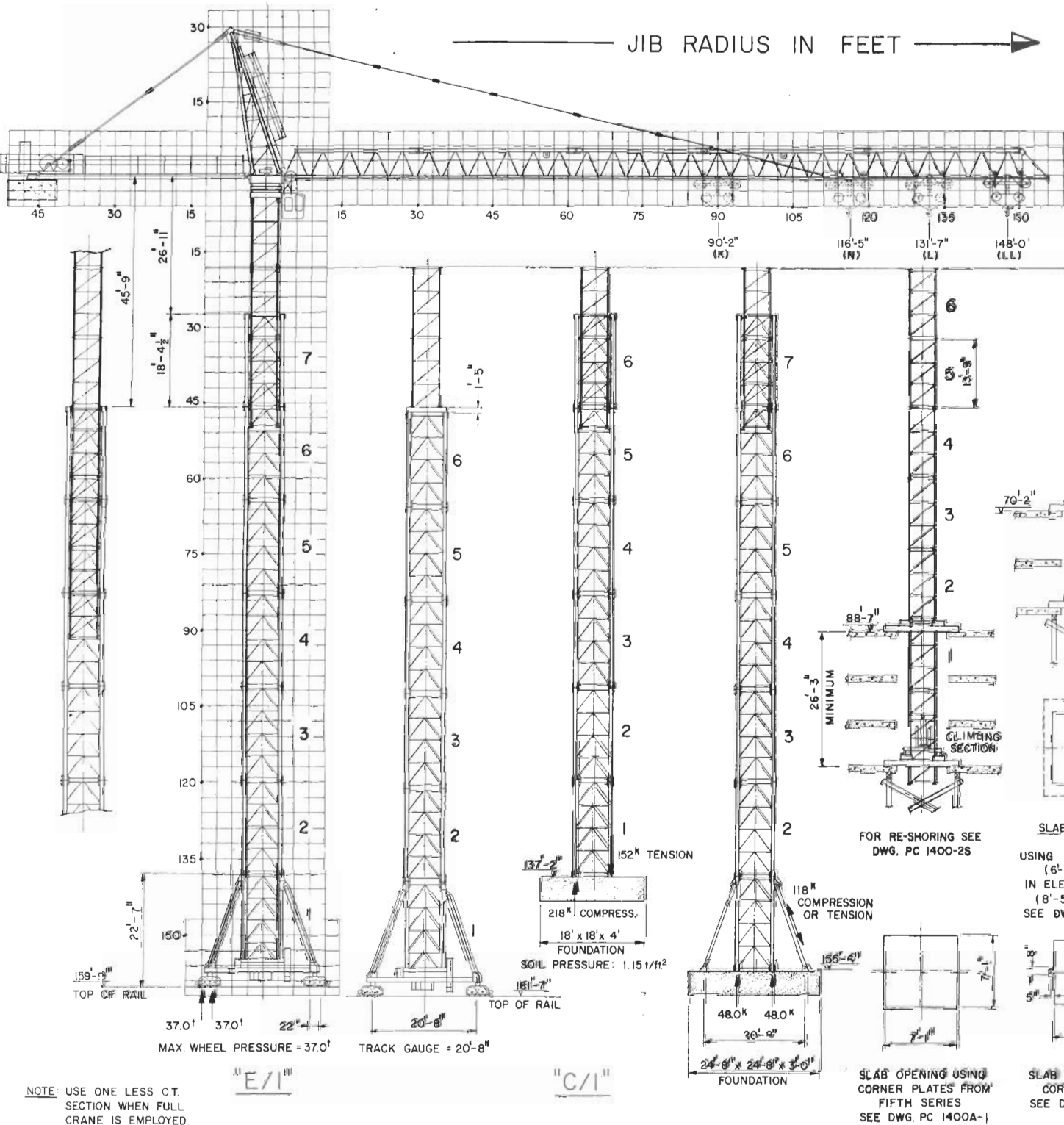
Non-Hoisting Functions

Movement	Speed	Power	Special Notes
Slewing	1 rpm	Two 6.5hp Motors	Ball-bearing race
Trolley Travel	160 or 250 fpm	One 18.0hp Motor	Variable from 16 to 250 fpm with 2 speed remote controlled gear box — motor equipped with eddy current brake.
Crane Travel for travelling configurations	100 fpm	Two 17.0hp Motors	Minimum radius of rail is 66'

Power required for all motors is 440-volt, 60-Hertz, 3-phase.

Note: American Pecco reserves the right to change specifications without notice.

PECCO Tower Cranes PC1400 Configurations

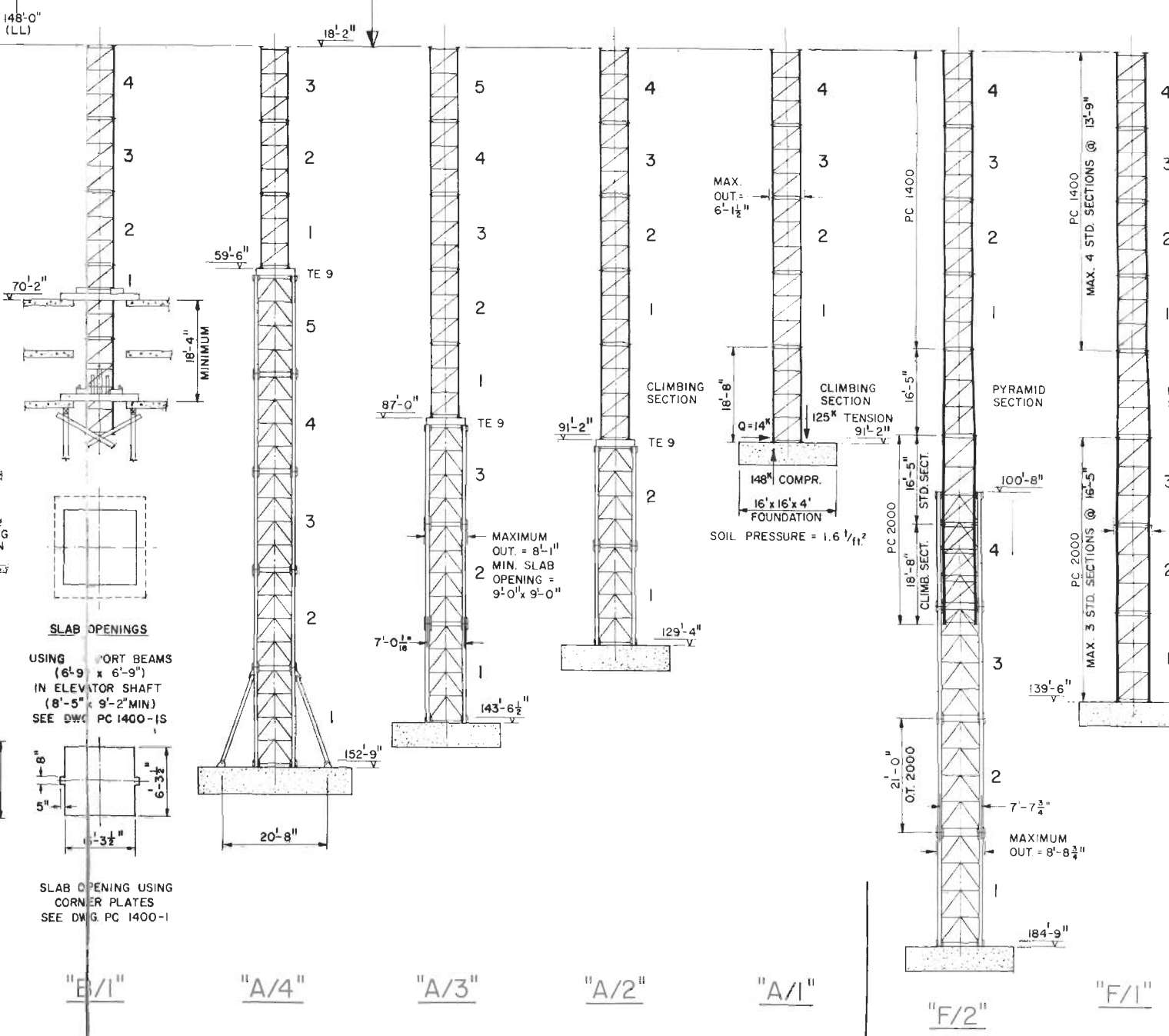
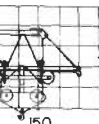


NOTE: USE ONE LESS O.T. SECTION WHEN FULL CRANE IS EMPLOYED.

JIB HEIGHT	CENTRAL COUNTERWEIGHT IN POUNDS	NO. OF O.T. SECTIONS	NO. OF BLOCKS
159'	88,000	7	16
141'	66,000	6	12
122'	44,000	5	8
104'	22,000	4	4
86'	NONE	3	0

(ONE BLOCK = 6'-0" x 10'-3" x 7 1/2" = 5,335 #)

CONFIGURA



CONFIGURATIONS OF PECCO CRANE TYPE PC1400

CONFIGURATIONS USING PYRAMID SECTION PC2000 / PC1400

Capacities

Jib Model	2 Part Trolley				4 Part Trolley			
	K	N	L	LL	K	N	L	LL
Maximum Hook Reach	90'-3"	116'-6"	132'-3"	148'-0"	90'-3"	116'-6"	132'-3"	148'-0"
Distance Hook from Tower	LIFTING CAPACITY IN POUNDS*							
11'-2"	22,000	22,000	22,000	22,000	27,500	27,500	27,500	27,500
34'-6"	↓	↓	↓	↓	↓	↓	↓	27,500
36'-5"	↓	↓	↓	↓	↓	↓	27,500	25,800
37'-3"	↓	↓	↓	↓	↓	27,500	26,500	25,000
41'-6"	↓	↓	↓	22,000	↓	24,500	23,650	22,400
41'-9"	↓	↓	↓	21,950	27,500	24,450	23,600	22,350
44'-6"	↓	↓	22,000	19,900	25,500	22,500	21,900	20,500
45'-6"	↓	22,000	21,200	19,250	25,000	19,400	21,400	20,000
52'-0"	22,000	18,700	18,100	16,100	22,400	18,600	18,100	16,800
60'-0"	18,700	15,800	15,450	13,800	17,900	15,600	15,300	14,200
70'-0"	15,500	13,200	12,900	11,500	15,000	12,650	12,400	11,750
80'-0"	13,200	11,300	11,100	9,950	12,700	10,450	10,250	9,700
90'-3"	11,550	9,900	9,700	8,800	10,700	8,800	8,600	8,200
100'-0"		8,650	8,400	7,800		7,800	7,600	7,200
116'-6"		7,200	7,000	6,900		6,300	6,200	5,800
132'-3"			5,950	5,500			5,100	4,700
148'-0"				4,620				3,800

*SOME CRANE MODELS HAVE A 17,600-LB. MAXIMUM CAPACITY.

Weights

Jib Configuration	<u>K</u>	<u>N</u>	<u>L</u>	<u>LL</u>
Counterweight for 105 HP Hoist Unit	14,350 lbs.	18,500 lbs.	22,700 lbs.	26,900 lbs.
Counterweight for 177 HP 2 Speed Hoist Unit	8,350 lbs.	12,550 lbs.	16,750 lbs.	21,000 lbs.

(Refer to technical data for counterweights used with other hoist units)

Tower Configuration	<u>A/1</u>	<u>B/1*</u>	<u>C/1</u>	<u>C/2</u>	<u>E/1</u>
Weight, without counterweight, using jib LL	77,880	91,740	109,120	123,000	140,360

*Including climbing frames and support beams

Parts

Item	Description	Supplied in configuration	Sketch	Dimensions in (ft)			Weight per piece (lbs)	Remarks
				a	b	c		
01	Undercarriage without slewing arms with bogie	E		34'-10 1/2"	11'-10"	4'-8"	11,550	With travel gear and motor
02	Slewing arm with bogie	E		11'-8"	1'-10"	4'-8"	3,014	2 pieces provided
03	Knee brace	C/2, E		17'-4 1/2"	0 1/4"	1'-0"	1,188	2 pieces provided
				17'-4 1/2"	0 1/4"	1'-0"	1,111	2 pieces provided
04	Support for central ballast	E		20'-8"	0'-7"	1'-4"	935	2 pieces provided
				8'-8"	0'-4"	0'-8"	164	2 pieces provided
05	Outer tower section I	C/2, E		18'-4 1/2"	9'-3 1/2"	9'-3 1/2"	8,602	
06	Outer tower section II	C/1, C/2, D/E		18'-6"	8'-11"	8'-11"	6,160	
07	Outer tower section IV	C/1, C/2, D/E		18'-6"	8'-11"	8'-11"	5,808	
08	Foundation frames	C/2		9'-9"	1'-10 1/2"	1'-11"	550	4 pieces provided
09	Base shoes for inner tower	A, B		1'-11"	1'-0 1/2"	1'-0 1/2"	352	4 pieces provided
10	Support for crane and climbing ladders	B	May be shipped inside other parts	-	-	-	462	2 pieces provided
11	Tower section, standard	A, B, C/1, C/2, D, E		13'-11"	6'-1 1/4"	6'-1 1/4"	3,718	
12	Tower section, standard, with slipping assembly	A, B, C/1, C/2, D, E		13'-11"	6'-1 1/4"	6'-1 1/4"	4,246	
13	Climbing section with platform, without hydraulic system	A		18'-0 1/4"	6'-3"	6'-1 1/4"	6,292	
14	Climbing section with platform and hydraulic system	B, C/1, C/2, D, E		18'-0 1/4"	6'-3"	6'-1 1/4"	11,352	
15	Climbing frame with corner plates, without corner plates	B		8'-4 1/2"	2'-5 1/2"	1'-10"	2,200	3 pieces provided
				8'-9"	2'-5 1/2"	2'-1 1/2"	1,980	2 pieces provided
16	Support beam	B		14'-11"	1'-0"	1'-4"	1,680	6 pieces provided
17	Climbing traverse	B, C/1, C/2, D, E		6'-11 1/2"	1'-4"	2'-7 1/2"	3,300	
18	Climbing ladders for building	B	may be shipped inside other parts	-	-	-	1,419	
19	Climbing ladders for outer tower	C/1, C/2, D, E	may be shipped inside other parts	-	-	-	1,056	
20	Tower top with ladder	A, B, C/1, C/2, D, E		31'-2"	5'-7 1/2"	5'-8 1/2"	3,498	
21	Man ladders and platforms	A, B, C/1, C/2, D, E	may be shipped inside other parts	-	-	-	814	
22	Crane cabin fastening	A, B, C/1, C/2, D, E	may be shipped inside other parts	-	-	-	1,210	
23	Operator's cabin	A, B, C/1, C/2, D, E		4'-11"	3'-11"	5'-5"	770	Packed in wooden box
24	Turntable with ball bearing slewing ring and slewing ring supp	A, B, C/1, C/2, D, E		7'-11 1/2"	4'-5 1/2"	6'-4"	7,480	w/o slew gear w/o platforms w/o control panel
25	Slewing gear	A, B, C/1, C/2, D, E	may be shipped inside other parts	-	-	-	1,804	2 pieces provided
26	Jib butt section	A, B, C/1, C/2, D, E		26'-9"	5'-7 1/2"	6'-10"	3,432	

Item	Description	Supplied in configuration	Sketch	Dimensions in (ft)			Weight per piece (lbs)	Remarks
				a	b	c		
27	Jib section II with trolley unit	A, B, C/1, C/2, D, E		32'-11"	5'-9"	6'-3"	3,640	
28	Jib section 3	A, B, C/1, C/2, D, E		26'-10"	5'-7"	6'-3"	2,299	omitted for jib K
29	Jib section 4	A, B, C/1, C/2, D, E		32'-11"	5'-7"	6'-3"	2,310	
30	Jib section 5	A, B, C/1, C/2, D, E		16'-5"	5'-7"	6'-3"	1,254	1 Piece for Jib L1 2 Pieces for jib L2
31	Jib end section	A, B, C/1, C/2, D, E		5'-10 1/2"	5'-7"	6'-7 1/2"	649	
32	Suspension bars for jib	A, B, C/1, C/2, D, E	may be shipped inside other parts	-	-	-	1,980	
33	Trolley	A, B, C/1, C/2, D, E		8'-6"	6'-9"	3'-6"	979	
34	Counter jib	A, B, C/1, C/2, D, E		47'-7"	8'-11 1/2"	1'-3"	4,620	
35	Catwalk for the counter jib	A, B, C/1, C/2, D, E	may be shipped inside other parts	-	-	-	792	Shipped disassembled
36	Hoist winch with hoist winch frame and drive unit	A, B, C/1, C/2, D, E		15'-5 1/2"	8'-11"	3'-5"	11,644	105 H.P. unit
				15'-6 1/2"	8'-6"	4'-1/2"	15,400	177 H.P. unit
37	Ballast blocks (central ballast)	E		8'-2 1/2"	1'-3 1/2"	5'-11"	5,500	
				8'-2 1/2"	2'-1"	5'-11"	11,000	
38	Erection sheave block for jib	A, B, C/1, C/2, D, E	may be shipped inside other parts	-	-	-	1,232	
39	Erection frame for ballast	A, B, C/1, C/2, D, E	may be shipped inside other parts	-	-	-	363	
40	Counter weights for counter jib	A, B, C/1, C/2, D, E		9'-10"	0'-8"	6'-4"	616	w/o concrete filling
				9'-10"	0'-8"	7'-3 1/2"	4,180	w/o concrete filling
				9'-10"	0'-8"	7'-3 1/2"	5,060	w/ concrete filling
41	Suspension bars for counter jib	A, B, C/1, C/2, D, E	may be shipped inside other parts	-	-	-	836	
42	Load block	A, B, C/1, C/2, D, E		2'-4 1/2"	1'-2"	5'-7"	418	hook with 1 sheave
				6'-5"	0'-8"	3'-8"	495	hook with 2 sheaves (4-part line)
43	Erection sheave	C/1, C/2, D, E		2'-10 1/2"	0'-9"	5'-0 1/2"	539	
44	Accessories, cables, pins, bolts, nuts, etc	A, B, C/1, C/2, D, E		8'-2 1/2"	4'-11"	3'-1 1/2"	4,400	Packed in wooden box
45	Control panel for hoisting unit	A, B, C/1, C/2, D, E		6'-10 1/2"	2'-0 1/2"	6'-7"	1,540	
46	Resistance panel for hoisting unit	E		2'-7"	1'-4"	3'-0"	880	
47	Overload limit switch	A, B, C/1, C/2, D, E	may be shipped inside other parts	-	-	-	110	
48	Electrical accessories	A, B, C/1, C/2, D, E		3'-3 1/2"	3'-3 1/2"	3'-3 1/2"	2,420	
49	Hoist drum	E		7'-9"	3'-3 1/2"	4'-8"	473	
50	Foundation plate for outer tower	C/1, D		1'-11 1/2"	4 1/2"	1'-11 1/2"	231	4 pieces provided
51	Corner plates	B	may be shipped inside other parts	-	-	-	84	12 pieces provided