

Shuttlelift CD5515-2

Provisional Quick Reference

Capacity: 13,6 t (15 USt)

Boom: 12,5 m (41.0 ft) or 15,2 m (50 ft) main boom

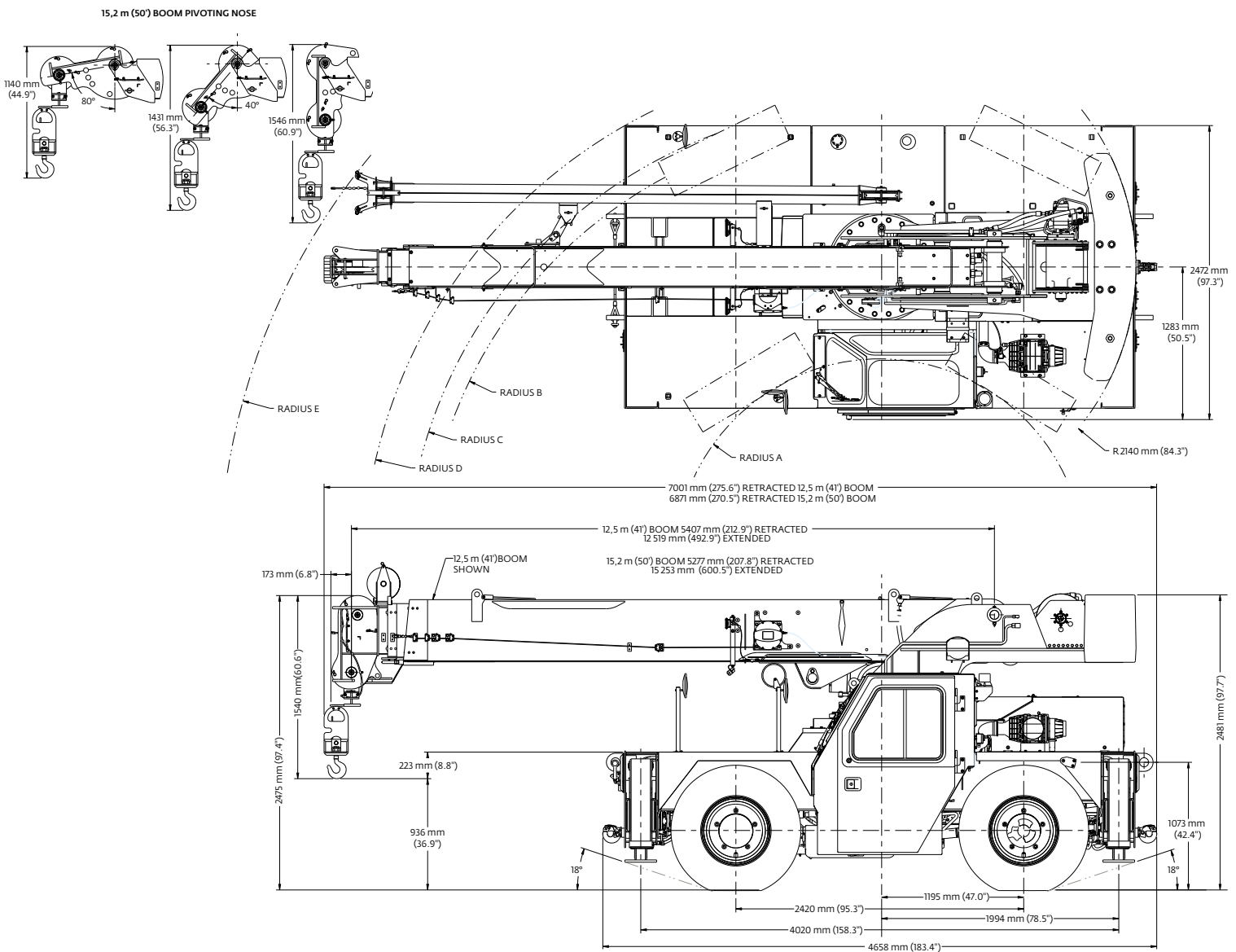
Max boom extension: 4,6 m (15 ft)

Max tip height: 23,1 m (46.6 ft)

FEATURES

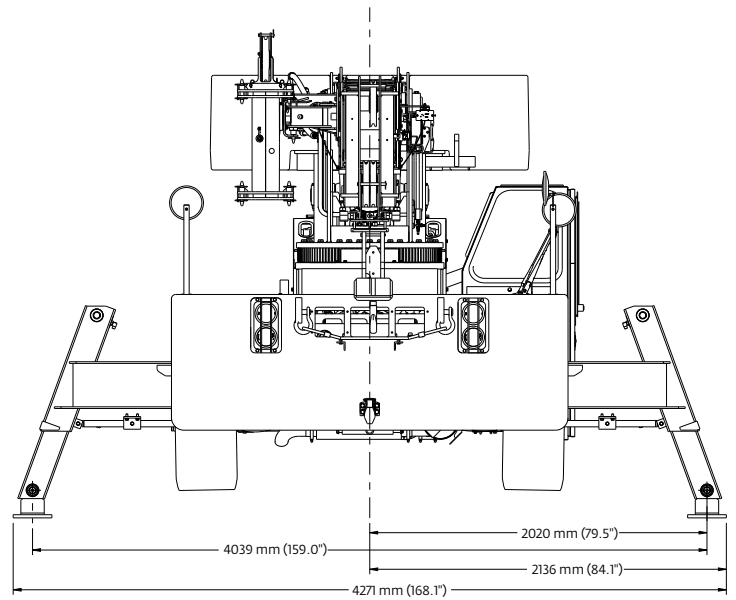
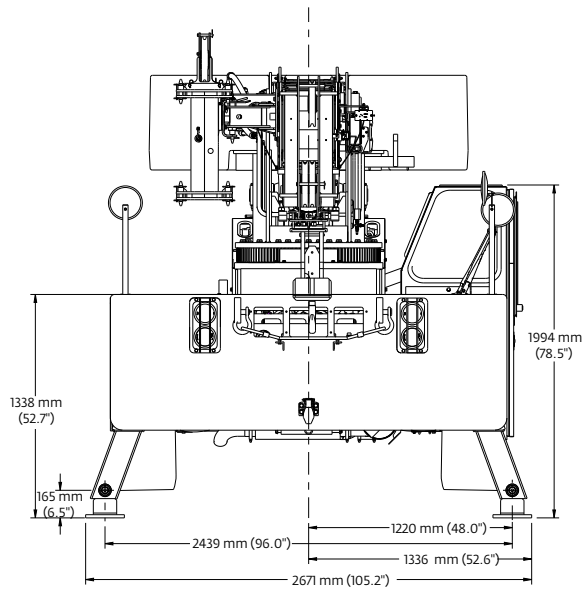
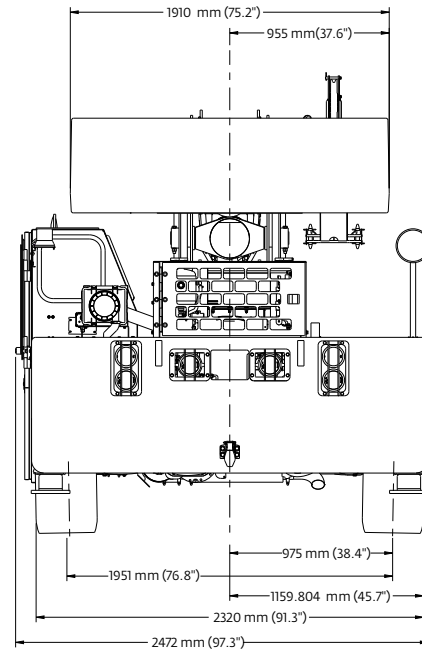
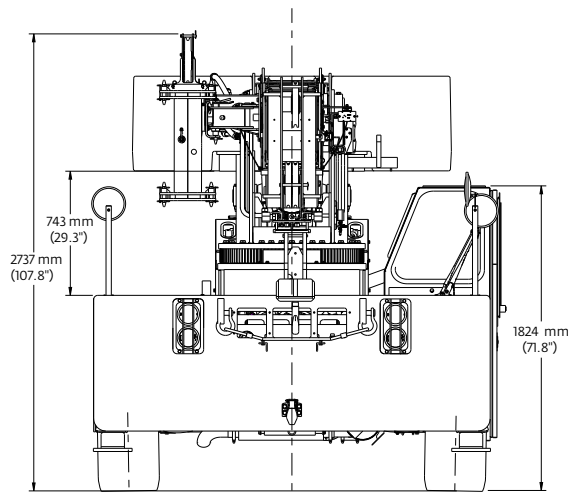
- 4,6 m (15 ft) swingaway extension
- 9072 kg (20,000 lb) deck carrying capacity
- 100 hp Cummins 3.3 L four-cylinder diesel engine (Tier IV)

Dimensions



	A	B	C	D	E 12.5 m (41 ft) boom	E 15,2 m (50 ft) boom
Two-wheel steer	3375 mm (11 ft 1 in)	6058 mm (19 ft 10.5 in)	6218 mm (20 ft 4.8 in)	6675 mm (21 ft 10.8 in)	7750 mm (25 ft 5 in)	7662 mm (25 ft 2 in)
Four-wheel steer	1722 mm (5 ft 8 in)	3841 mm (12 ft 7 in)	3993 mm (13 ft 1 in)	4481 mm (14 ft 8 in)	5572 mm (18 ft 3 in)	5478 mm (18 ft 0 in)

Dimensions



SUPERSTRUCTURE

Boom

5,5 m - 12,5 m (18 ft – 41 ft) three-section full power boom.
Maximum tip height: 14,3 m (46.6 ft).

*Optional main boom

5,4 m - 15,2 m (17.3 ft – 50 ft) four-section full power boom.
Maximum tip height: 16,8 m (55 ft).

*Optional boom extensions

15 ft fixed swingaway extension.
Maximum tip height: 23,1 m (76 ft).

Boom nose

Standard: two-sheave, quick reeve type, non-pivoting boom nose

With optional boom: two-sheave, quick reeve type with three- pinned pivoting (0°, +40°, and +80°) design to minimize head space requirements. Lowers head height 40,5 cm (1.33 ft) when nose is pivoted fully forward.

Boom elevation

Single double acting hydraulic cylinder with integral holding valve. Elevation: 0° to 69°.

Anti-two block device

Standard anti-two block device (hard wired), which, when activated, provides an audible and visual warning to the operator and “locks out” all functions whose movement can cause two-blocking.

Load Moment Indicator

A simple, effective, and easy to use load moment indicating system used in conjunction with the anti-two block system to assist the operator in efficient operation of the unit within the limits of the load chart. The display panel displays the max. load allowed, the actual hook load, length and angle of the boom, and load radius in Dot Matrix numerical values and provides a load utilization colored bar graph. Inputs by operator are maximum allowed load and parts of line. If non-permitted conditions are approached the L.M.I. will warn the operator with an audible alarm and a warning light and will lock out those functions that may aggravate the condition (hardwired system).

*Load Moment Indicator

“Graphics Display” of boom angle, boom length, load radius, and capacity. Operator input to set the limit parameters based on the load chart. Displays color coded light bar and audible alarm with function cut-out if load exceeds the load chart parameters (hardwired system).

Swing

Ball bearing swing circle with 360° continuous rotation. Worm gear and pinion driven by hydraulic motor. Spring applied, hydraulic released brake.
Maximum speed: 2.5 rpm

Hydraulic system

One pressure compensated variable displacement axial piston pump, with load sensing.

Maximum output of: 155 LPM (41.0 GPM)

Maximum operating pressure: 276 bars (4000 p.s.i.)

Six-section valve bank, chassis mounted, operated via dash mounted pilot pressure hydraulic joystick controllers.

151,4 L (40 gal) steel hydraulic reservoir with sight level gauge and steel side plating to guard against side impact.

Return line replaceable filter with by-pass protection and service indicator. Cartridge filter rating of three micron.

Hoist specifications

Two speed gear motor driven hoist with automatic spring applied / hydraulically released wet brake. Smooth drum with cable follower.

Maximum hoist pull (first layer): 63,6 kN (14,300 lb)

Maximum permissible single line pull: 44,5 kN (10,000 lb) (3.5:1 design factor)

Maximum single line speed: 64 m/min (210 fpm)

Rope construction: 6 x 19 XXIPS / IWRC

Rope diameter: 14 mm (9/16 in)

Rope length: 97,5 m (320 ft)

CARRIER

Chassis

High strength alloy frame constructed with integral outrigger housings; front and rear lifting, tie-down, and towing lugs. 6.2 m² (66,3 sq. ft.) carrydeck size with 9072 kg (20,000 lb) deck only carrying capacity. Deck coated with anti-skid treatment.

Outriggers

Single stage hydraulic telescoping beam with oblique style jack cylinder on all four corners. Provides extended and down and retracted and down lifting capabilities. Integral holding valve on both beam and jack. Outrigger positioning indicator located in dash display.

Outrigger pad size: 222 mm x 254 mm (8.75 in x 10 in)

Maximum outrigger pad load: TBA.

Outrigger controls

Independent outrigger control rocker switches for beam or jack selection with a separate extend /retract rocker selector switch. 360° level bubble located inside cab.

Engine (Tier IV)

Cummins QSB 3,3 L four cylinder / turbo-charged diesel rated at 75 kW (100 hp) at 2600 r.p.m. Includes standard 110V engine block heater and air intake “Grid” heater. Engine hourmeter located in dash display. Alternator: 120 amp. Maximum Torque: 414 Nm (305 ft/lb). Fuel requirements: Maximum of 15 ppm sulphur content Requires “Ultra Low” diesel fuel.

NOTE: Tier IV required for sale in North America and European Union countries.

Engine (Tier III)

Cummins QSB 3.3L four cylinder / turbo-charged diesel rated at 74 kW (99 hp) at 2600 r.p.m. Includes std. 110V engine block heater and air intake “Grid” heater. Engine hourmeter located in dash display. Alternator: 90 amp. Maximum Torque: 415 Nm (306 ft/lb).

NOTE: Required for sale outside of North America and European Union countries.

Fuel tank capacity

Steel with side impact plate.
Capacity: 151,4 L (40 gal).

Transmission

Powershift with four speeds forward and four reverse. Steering column mounted shifter.

Operator's control station

Frame mounted, open air style control station with cab shell includes all crane functions and driving controls and equipped with overhead safety glass. Other standard equipment includes a suspension seat with seat belt, sight level bubble and 1,1 kg (2.5 lb) fire extinguisher, and tilt steering wheel. The dash panel will display the fuel level gauge, water temperature gauge, engine r.p.m., battery voltage, and hour meter. Indicator lights will display parking brake, low transmission pressure, low brake pressure, oscillating axle lock, outrigger position, headlights, work lights (if ordered), and hoist 3rd wrap (if ordered). Crane function indicator and turn signal indicators are also included. The load indicator display will be mounted on the top of the dash panel for direct line of sight for the operator.

*Operator's control station enclosed

Includes the standard cab shell and all controls and indicators noted above, with the addition of front, rear, and right side glass, a split (two-piece) hinged door with sliding glass, front windshield wiper and washer, hot water heater and defroster with fan and cab dome light.

Electrical system

One heavy duty maintenance free 12V battery, 820CCA at 0°F.

Drive

Two-wheel (front-wheel) as standard with four-wheel drive as an option. Drive axles supplied with planetary hubs and limited slip differential.

Steering

Standard three steering modes. Front (two-wheel), four-wheel coordinated, and four-wheel crab steer with electronic self alignment. Three position rocker switch located on dash panel.

Outside Turning Radius:

Two wheel steer: 6,2 m (20 ft 4.8 in)
Four wheel steer: 3,9 m (13 ft 1 in)

Suspension/Axles

Front: Drive / steer in both two-wheel drive and four-wheel drive
Rear: non-drive with steer in two-wheel drive, drive/steer in four-wheel drive.

Front axle is rigid mounted to frame. Rear axle offers 1.5° of oscillation.

Brakes

Hydraulic actuated internal wet-disk service brake acting on each drive wheel. Dash mounted rocker switch with indicator light for activating or release of the dry disc parking brake mounted on the transmission output yoke.

Tires

Tubeless type, semi-aggressive tread. 12.00 R20

Lights

Full LED lighting includes turn indicators, head, tail, brake, and hazard warning lights recessed mounted.

Maximum speed

33,8 km/h (21.0 mph)

Gradeability (theoretical)

68%....(to drive train stall) NO LOAD
40%....(to drive train stall) with 9072 kg (20,000 lb) DECK LOAD

Gross vehicle weight (G.V.W.)

Open cab basic unit with Tier IV engine: 13 585 kg (29,590 lb)

Enclosed cab basic unit with Tier IV engine: 13 507 kg (29,777 lb)

Miscellaneous standard equipment

20 USt two-sheave low profile “galvanize coated” hook block with “quick reeve design”, back-up motion alarm, outrigger motion alarm, no-skid decking, front and rear lifting, towing, and tie-down lugs.

*Optional equipment

- Auxiliary lighting: Includes cab mounted amber flashing light and dual base boom mounted LED work lights
- Convenience package: Includes front and rear pintle hitch, dual rear view mirrors, head and tail light metal mesh grille covers.
- Enclosed cab package: Includes heater and defroster, cab dome light, all window glass, and two-piece split door.
- Four-wheel drive
- Below deck hydraulic tow winch with 4536 kg (10,000 lb) capacity.
- 4,5 m (15 ft) fixed boom extension
- Air conditioning (closed cab option required)
- Hoist third wrap indicator with hoist function cut-out
- Hoist drum rotation indicator
- 360° swing lock
- C.E. compliant package

*Denotes optional equipment

This document is non-contractual. Constant improvement and engineering progress make it necessary that we reserve the right to make specification, equipment, and price changes without notice. Illustrations shown may include optional equipment and accessories and may not include all standard equipment.