

PK 34002 SH

PALFINGER

LIFETIME EXCELLENCE

FUNCTIONAL DESIGN AND THE LATEST CONTROL TECHNOLOGY SET STANDARDS IN OPERATOR FRIENDLINESS AND COMFORT



LIFETIME EXCELLENCE

PALFINGER LOADER CRANES ARE CONVINCING DUE TO THEIR SUPERIOR LIFE-CYCLE PERFORMANCE. THEY ARE THE MOST ECONOMICAL AND ALSO THE MOST RELIABLE OVER THE ENTIRE PRODUCT LIFE. FROM SOLUTION FINDING TO RESALE.

BETTER
SOLUTIONS

BETTER
EFFICIENCY

BETTER
ERGONOMICS

HIGHER VALUE
RETENTION



HIGHER
AVAILABILITY

HIGHER
SERVICEABILITY

BETTER
ECOLOGY

MORE
RELIABILITY



POWER AND INTELLIGENCE IN PERFECT INTERACTION





- More lifting power due to S-HPLS
- More efficient and faster through continuous slewing system
- Additional applications due to Power Link Plus
- Increased operating times due to low-maintenance extension system
- Higher payloads due to intelligent lightweight design



PERFECT TOOL WITH SOPHISTICATED KINEMATICS

12

HIGHLIGHTS



CONTINUOUS SLEWING SYSTEM
UNRESTRICTED MOVEMENT

More efficient in operation due to faster loading cycles, since the crane can be slewed over a shorter distance. The crane works more efficiently and faster.



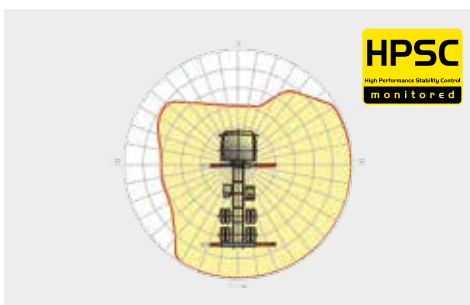
POWER LINK PLUS
HIGH VARIETY OF USES

With the 15-degree reverse linkage system, you can reach through low door openings and also work inside buildings. Heavy crane work – even in difficult conditions.



LOW-MAINTENANCE EXTENSION SYSTEM
REDUCES SERVICE TIME

With sliding elements made of synthetic material and the high-quality KTL coating, this boom system significantly simplifies service performed by the operator. This saves time and money – and protects the environment.



HPSC
MAXIMUM UTILISATION OF THE WORKING RANGE

The variable stabiliser positioning of the High Performance Stability Control System makes it possible to utilise the lifting capacity to the maximum. It enables working within tight spaces.



S-HPLS
MORE LIFTING POWER WHEN IT IS REALLY NEEDED

S-HPLS is one of the most important functions of the PALTRONIC 150. It is a fully automatic system for increasing the lifting power. Depending on the need, there is continuous adaptation of the lifting power and speed of the crane.



CONTROL TECHNOLOGY
COMMUNICATION WITH THE OPERATOR

New standards in operator friendliness through perfect interaction between PALTRONIC 150, control valve and radio remote control. The operator is guided clearly and safely.



POWER LINK CABLE WINCH
MORE COMFORT IN CABLE WINCH OPERATION

Characterised by low installation height, it is ideal for working inside buildings and transports with the crane boom unfolded. The Comfort Cable Routing reduces set-up times to a minimum.



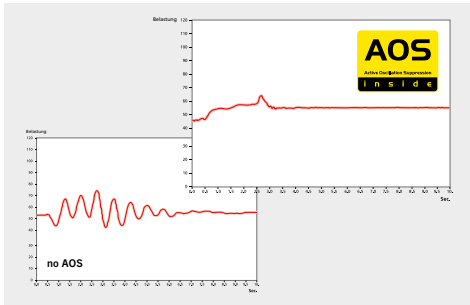
FUNCTIONAL DESIGN
PRACTICAL AND ATTRACTIVE

Robust plastic covers protect crane parts against dirt and damage. Better appearance and increased operational comfort – during the entire lifetime.



KTL – CATHODIC DIP PAINTING
FOR RETAINING HIGH VALUE

The UV-resistant coating guarantees long-term surface protection. Perfect appearance during the entire lifetime for maximum resale value.



AOS
MAXIMUM PRECISION AND SAFETY

The active oscillation suppression system prevents "post-oscillation" in the event of rapid braking or load changes. The stress peaks on the extension boom system are reduced and material fatigue and wear are minimised. This increases the resale value.



DPS PLUS
MORE EFFICIENT FLY-JIB OPERATION

The Dual Power System allows multiple uses of the crane both for large outreaches as well as for heavy load operation.



SOFT STOP FUNCTION
MORE COMFORT AND SAFETY

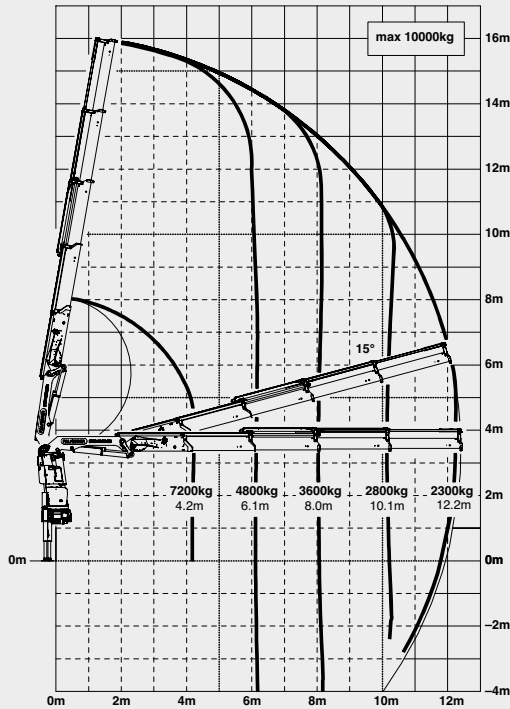
The Soft Stop function is an electronic limit position damper. It causes gentle braking of all crane movements before the limit position is reached. Hence, jerky movements and load impacts can be avoided. The crane can be operated more gently and precisely.



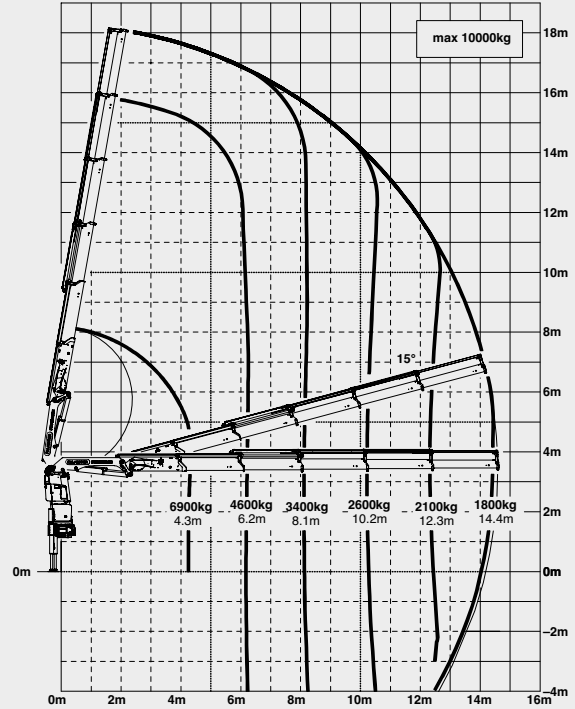
* Optional features / country-specific equipment

PK 34002 SH HIGH PERFORMANCE

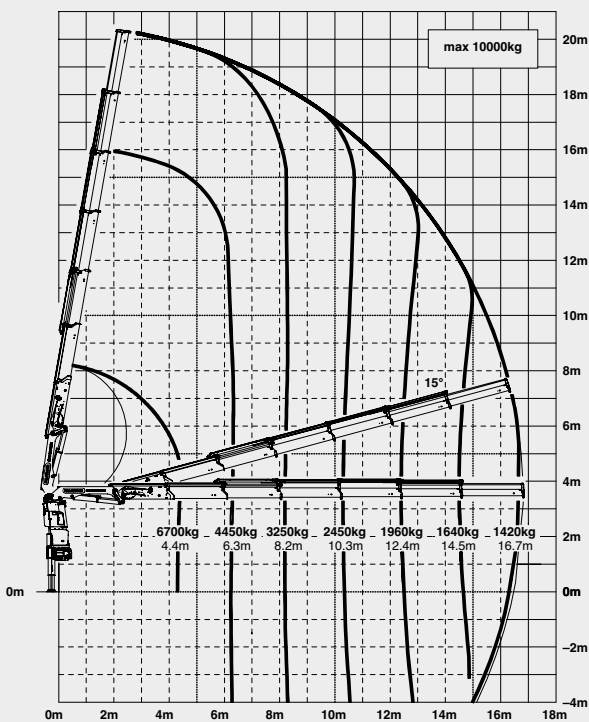
C



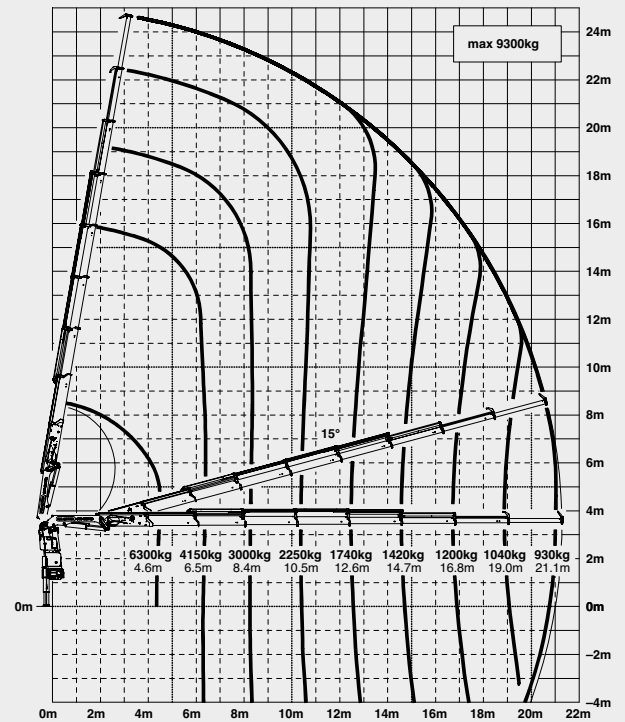
D



E

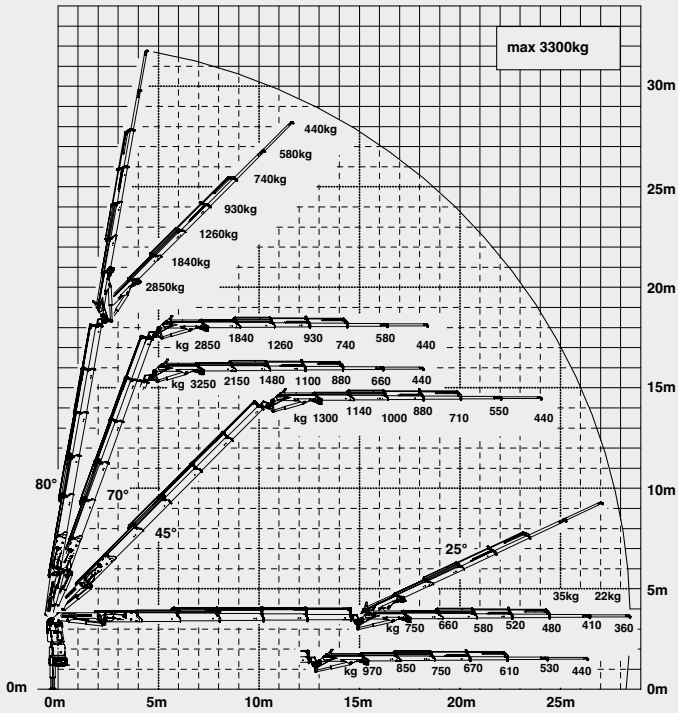


G

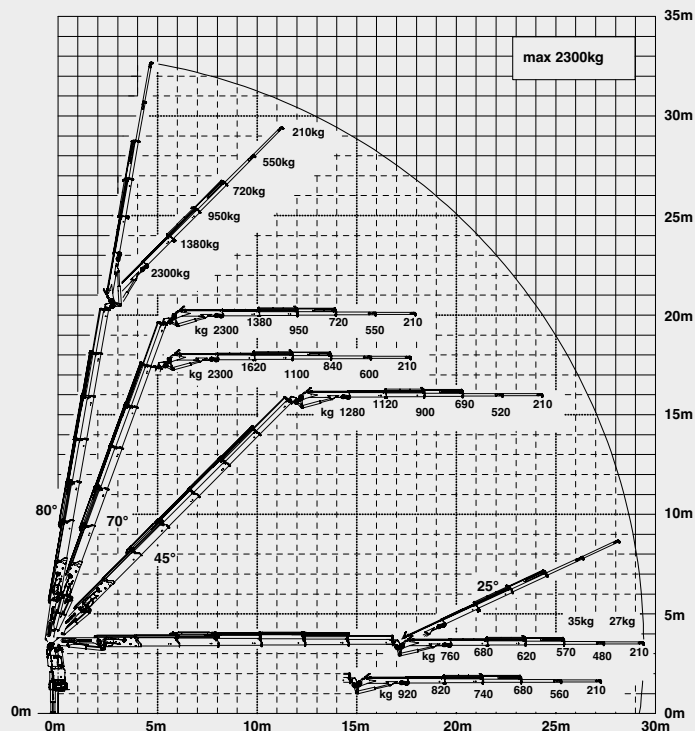


MORE LIFTING POWER WHEN IT IS REALLY NEEDED

D PJ080C JV2 DPS PLUS



E PJ060B JV2 DPS PLUS



LIFTING CAPACITIES

A	max.		10000 kg	22040 lbs
	4.1 m	13' 5"	7800 kg	17100 lbs
	6.0 m	19' 8"	5300 kg	11600 lbs
	7.9 m	25' 11"	4000 kg	8800 lbs

B	max.		10000 kg	22040 lbs
	4.2 m	13' 9"	7500 kg	16500 lbs
	6.1 m	20' 0"	5100 kg	11100 lbs
	8.0 m	26' 3"	3800 kg	8400 lbs
	10.1 m	33' 2"	3000 kg	6600 lbs

C	max.		10000 kg	22040 lbs
	4.2 m	13' 9"	7200 kg	15800 lbs
	6.1 m	20' 0"	4800 kg	10600 lbs
	8.0 m	26' 3"	3600 kg	7900 lbs
	10.1 m	33' 2"	2800 kg	6100 lbs
	12.2 m	40' 0"	2300 kg	5100 lbs
	14.4 m*	47' 3"	1880 kg	4150 lbs
	16.6 m*	54' 6"	1540 kg	3450 lbs

D	max.		10000 kg	22040 lbs
	4.3 m	14' 1"	6900 kg	15300 lbs
	6.2 m	20' 4"	4600 kg	10200 lbs
	8.1 m	26' 7"	3400 kg	7500 lbs
	10.2 m	33' 6"	2600 kg	5800 lbs
	12.3 m	40' 4"	2100 kg	4650 lbs
	14.4 m	47' 3"	1800 kg	3950 lbs
	16.7 m*	54' 9"	1480 kg	3300 lbs
	18.8 m*	61' 8"	1240 kg	2800 lbs

E	max.		10000 kg	22040 lbs
	4.4 m	14' 5"	6700 kg	14800 lbs
	6.3 m	20' 8"	4450 kg	9800 lbs
	8.2 m	26' 11"	3250 kg	7100 lbs
	10.3 m	33' 10"	2450 kg	5400 lbs
	12.4 m	40' 8"	1960 kg	4350 lbs
	14.5 m	47' 7"	1640 kg	3650 lbs
	16.7 m	54' 9"	1420 kg	3150 lbs
	18.8 m*	61' 8"	1200 kg	2700 lbs
	21.0 m*	68' 11"	1000 kg	2200 lbs

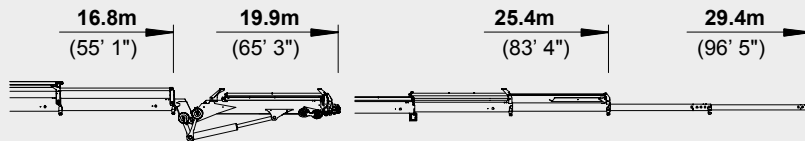
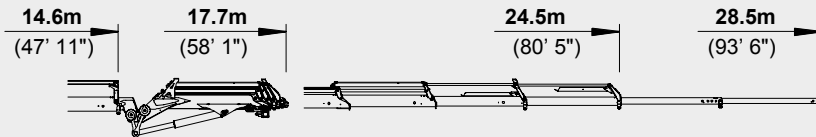
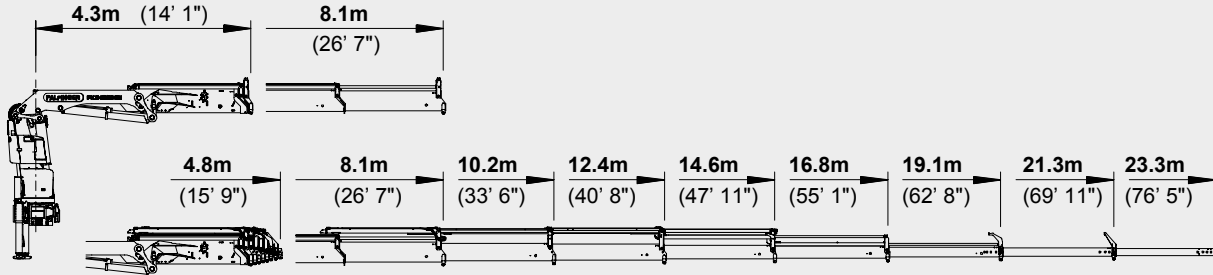
F	max.		9600 kg	21160 lbs
	4.5 m	14' 9"	6500 kg	14300 lbs
	6.4 m	20' 12"	4300 kg	9500 lbs
	8.3 m	27' 3"	3100 kg	6900 lbs
	10.4 m	34' 1"	2350 kg	5200 lbs
	12.5 m	41' 0"	1860 kg	4100 lbs
	14.6 m	47' 11"	1540 kg	3400 lbs
	16.7 m	54' 9"	1320 kg	2900 lbs
	18.9 m	62' 0"	1160 kg	2550 lbs
	21.1 m*	69' 3"	1000 kg	2200 lbs
	23.1 m*	75' 9"	570 kg	1260 lbs

G	max.		9300 kg	20500 lbs
	4.6 m	15' 1"	6300 kg	13900 lbs
	6.5 m	21' 4"	4150 kg	9100 lbs
	8.4 m	27' 7"	3000 kg	6600 lbs
	10.5 m	34' 5"	2250 kg	4900 lbs
	12.6 m	41' 4"	1740 kg	3850 lbs
	14.7 m	48' 3"	1420 kg	3150 lbs
	16.8 m	55' 1"	1200 kg	2650 lbs
	19.0 m	62' 4"	1040 kg	2300 lbs
	21.1 m	69' 3"	930 kg	2050 lbs
	23.1 m*	75' 9"	570 kg	1260 lbs

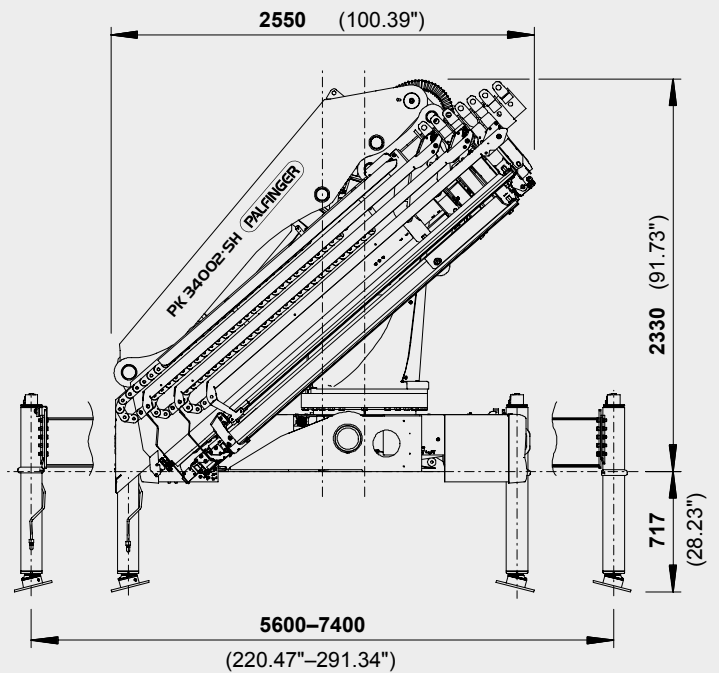
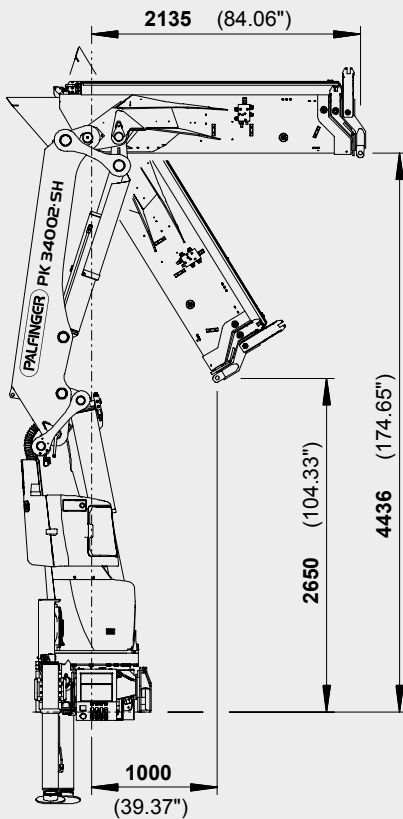
*mechanical extension

PERFECT DIMENSIONS

EXTENSION BOOM VARIATIONS



DIMENSIONS



PK 34002 SH

D PJ080C JV2

E PJ060B JV2

TECHNICAL SPECIFICATIONS (EN 12999 HC1 HD5/B3)

Max. lifting moment	32.6 mt/320.0 kNm	236000 ft.lbs
Max. lifting capacity	10000 kg/98.1 kN	22050 lbs
Max. hydraulic outreach	21.3 m	69' 11"
Max. manual outreach	23.3 m	76' 5"
Max. outreach (with fly-jib)	29.4 m	96' 5"
Slewing angle	endless	
Slewing torque with 1 gear	3.3 mt/32.4 kNm	23880 ft.lbs
Slewing torque with 2 gears	4.0 mt/39.2 kNm	28940 ft.lbs
Stabiliser spread	std. 5.6 m/18' 4"	max. 7.4 m/24' 3"
Fitting space required (std.)	1.01 m	3' 4"
Width folded	2.55 m	8' 4"
Max. operating pressure	365 bar	5293 psi
Recommended pump capacity	from 90 l/min	23.8 US gal./min
	to 120 l/min	31.7 US gal./min
Dead weight (std.)	2931 kg	6460 lbs

