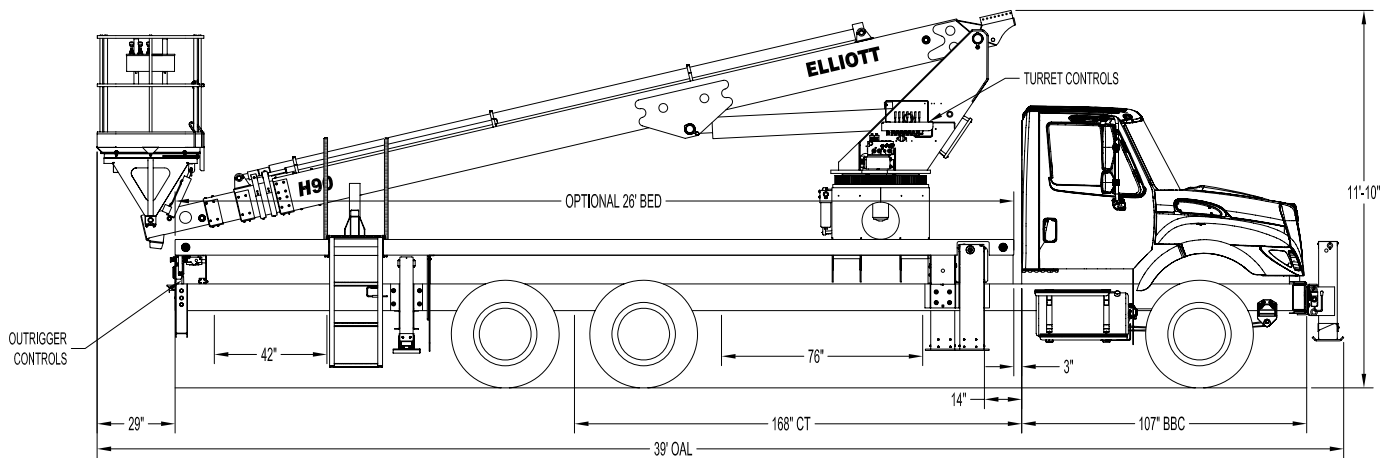




H90F SIDE VIEW DIAGRAM



- **Working Height** 95'/29 m
- **Working Side Reach** 59'/18 m
- **Platform Capacity** 600 lbs/272 kg
- **Platform Size** 40x60 in/102x152 cm
- **Platform Type** Top Mount
- **Lifting Capacity (Main Winch)** 14,000 lbs/6,350 kg
- **Jib Winch** 1,000 lbs/454 kg

- **Powered Boom Sections** 4
- **Overall Height** 11'10"/3.6 m
- **Unit Weight (Bare)** 21,000 lbs/9,525 kg
- **Outrigger Spread Main** 18'/5.5 m
- **Outrigger Spread Auxiliary** 8'/2.4 m
- **Front Gross Axle Weight Rating** 14,000 lbs/6,350 kg
- **Rear Gross Axle Weight Rating** 34,000 lbs/15,422 kg

TECHNICAL SPECIFICATIONS

Maximum Platform Height: 90' ground to platform floor.

Working Range: 95' max. height and 59' max. side reach.

Work Platform: 40x60" Top-Mount work platform with 40" high rails. Equipped with two safety lanyard attachment loops and two safety harnesses and 72" lanyards. Platform capacity 600 lbs.

Platform Leveling System: Hydraulic "closed" system consisting of twin platform cylinders interacting with a boom-actuated master cylinder mounted in boom support turret. System provided with factory-set relief valves to compensate for oil expansion or overload during platform leveling operation. Remote releveling controls provided in platform and at ground controls to give precise releveling capability.

Platform Controls: Three individual proportional electronic controllers meter pilot-operated, pressure-compensated modulating valves. Boom ground controls are mounted on curbside of turret. Remote controls for boom operations from platform operate from a removable remote control box. Hi/Lo range, start/stop and engine speed toggle controls are also located at platform. Electric remote control cable extends through the electrical slip ring to cable carrier on side of boom to extending boom sections.

Lower Controls: Mounted on curbside of turret.

Outrigger Controls: Parallel open-center stack valve for lever-operated control of right and left outriggers. The outrigger valves are mounted at the rear, under each corner of the bed with roadside valve controlling roadside outriggers and curbside valve controlling curbside outriggers.

Outriggers: "MH" type out-and-down

main outriggers with 18' spread. "A" type underslung secondary outriggers with 8' spread. Front stabilizer mounted to 20" front frame extension.

Frame: One piece, all welded, box-type fabrication with integral outrigger mounts.

Turret: Reverse offset turret is one-piece weldment mounted on turret box. Turret rotates on large diameter ball bearing.

Rotation: Continuous turret rotation with no stops. Hydraulic motor drives turret through self-locking gear box.

Boom: Steel rectangular tube sections. Assembly includes heavy-duty cylinder fittings, pivot pins, and replaceable wear pads.

Boom Extension: One "overslung" extension cylinder.

Lift: One single-acting full displacement, long stroke cylinder, provides smooth and stable boom elevation. Holding valve prevent boom from falling in event of hose failure.

Cylinders: All cylinders use microhoned cylinder tubing, chrome shafts, top grade packing and protective rod wipers. Cylinder-mounted holding valves provided on all load-holding cylinders.

Hoses: All high pressure hoses are wire braid reinforced with a minimum safety factor of 4 to 1.

Oil Tank Capacity: 70 gallon mounted to truck frame on roadside.

Hydraulic System: Operating pressure approximately 3,000 PSI. System is parallel open center type and is equipped with liquid-filled pressure gauge. Oil is supplied to upper cylinders through hydraulic union in center of turret to cable carrier along side of the boom.

Pump: Gear type, direct mount to truck PTO.

PTO: Heavy-duty, high-speed. Cable

engaged from cab.

Cab Equipment: PTO with indicator lights installed in truck cab. Engine speed control and start/stop installed with control switches in platform remote control box and also located at lower controls. U/L approved 5:BC dry chemical fire extinguisher installed in truck cab.

Operators Manual & Video: Two CDs and one printed copy of operation, maintenance, safety and parts manual provided with each unit. Operational and safety video provided at delivery.

Installation: Unit installed on truck, painted, system and tank filled with oil, tested, inspected, and ready to operate.

Standard Paint: Paint boom and turret red, outriggers red, and bed and boxes black. Top of bed painted with black nonskid surface.

Bumper: Bureau of Motor Carrier Safety rear bumper.

Weight: Approximately 27,500 lbs. with 26' steel-floor bed less truck.

Truck Chassis Required: Approx. 168" C.T. RBM 2,000,000 in-lb. per rail, 14,000 lb. front axle and 48,000 lb. GVWR required. Trucks must have increased cooling, heavy-duty front and rear springs, 12V electrical system with high capacity alternator, cab clearance stop/tail/backup lights, and I.D. lamps. Extended front frame rails. Recommended GVWR is minimum for HI-REACH with flatbed only. Contact factory when additional equipment is to be added.

Options:

14,000 lb Capacity Boom Winch

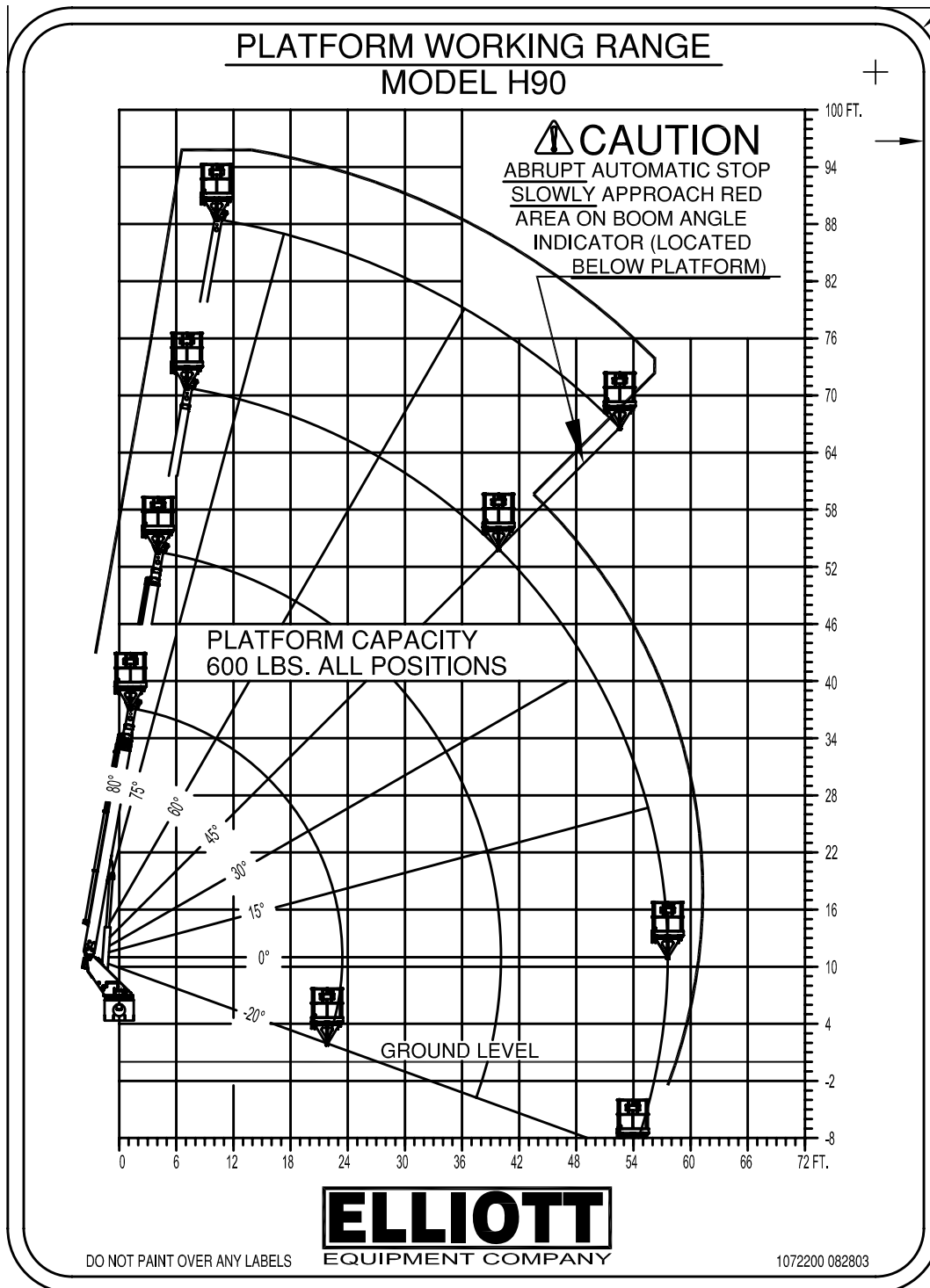
1,000 lb Capacity Platform Jib

Welder, Air, 110V Lines and More to Platform.

Much more....

Elliott Equipment Company reserves the right to change the specification of any unit at any time without prior notice. This brochure is only a statement of general specifications on the date of this publication. For more detailed info on specific Elliott trucks go to www.elliottequip.com

MAXIMUM WORKING RANGE

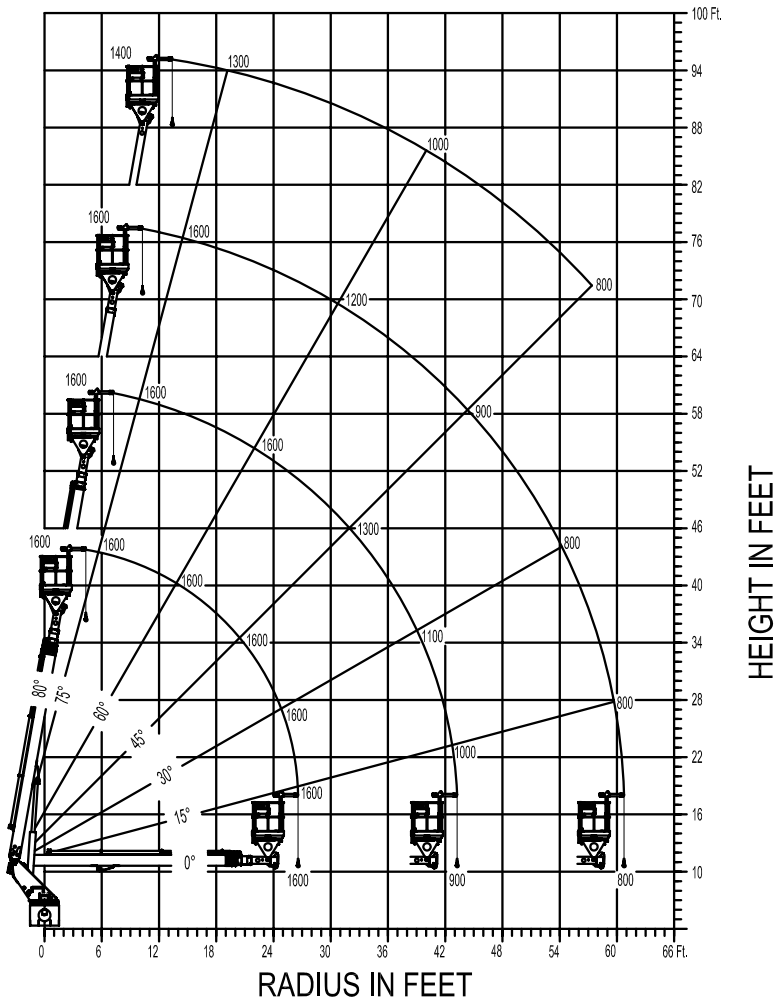


MAXIMUM JIB WORKING LOADS

**MAXIMUM WORKING LOADS
PLATFORM JIB OPERATION
MODEL H90**

TOTAL PLATFORM CAPACITY (JIB LOAD PLUS PERSONNEL)

USE OUTRIGGERS AT ALL TIMES • AVOID JERKING LOAD
360° BOOM RADIUS



JIB 1,000 LBS MAX. PERSONNEL 600 LBS. MAX.



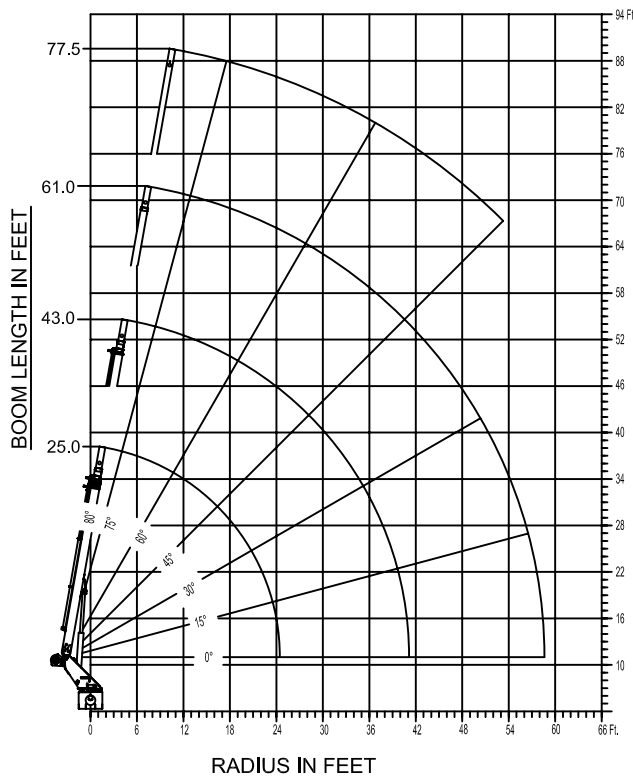
DO NOT PAINT OVER ANY LABELS

1072190 082803

MAXIMUM BOOM WORKING LOADS



MODEL H90



DO NOT PAINT OVER ANY LABELS

**MAXIMUM WORKING LOADS
CRANE OPERATION**

WINCH LINE LOAD (POUNDS) ON BOOM
SHEAVE WITH PLATFORM REMOVED.

RADIUS (FT.)	25.5' BOOM LENGTH		43.0' BOOM LENGTH	
	ANGLE (DEG.)	LOAD (LBS.)	ANGLE (DEG.)	LOAD (LBS.)
3	80	14,000		
5	75	8,000	80	7,000
8	66	7,200	75	5,000
11	60	6,000	72	4,900
16	45	5,000	64	4,600
19	34	4,600	60	4,500
20	30	4,500	58	4,400
22	15	4,200	55	4,300
23	0	4,000	53	4,300
28			45	4,100
34			30	3,700
39			15	3,300
40			0	3,000

RADIUS (FT.)	61.0' BOOM LENGTH		77.5' BOOM LENGTH	
	ANGLE (DEG.)	LOAD (LBS.)	ANGLE (DEG.)	LOAD (LBS.)
8	80	4,000		
11	77	3,400	80	3,000
13	75	3,000	79	2,900
18	70	2,800	75	2,500
28	60	2,500	67	2,200
36	50	2,100	60	2,000
40	45	1,900	57	1,800
49	30	1,500	49	1,400
53	22	1,400	45	1,200
55	15	1,300		
57	0	1,200		

USE OUTRIGGERS AT ALL TIMES * AVOID JERKING LOADS 360°
* USE 2 PART LINE FOR LOADS OVER 2,500 LBS.
DEDUCT 500 LBS. WITH PLATFORM ATTACHED

1076700 020803

CHASSIS DATA

	H90F
Wheelbase (WB)	236" / 600 cm
Cab to Tandem (CT)	168" / 427 cm
Cab to End of Frame (EOF)	315" / 800 cm
Frame Section Modulus	16.6 in3 / 120,000 psi / 827,371 kPa
Front Axle Gross Weight Rating	14,000 lb / 6,350 kg
Rear Axle Gross Weight Rating	34,000 lb / 15,422 kg
Extended Front Frame	Required

Chassis data is minimum general requirements-not for engineering.
Actual dimensions and truck data will depend on truck selection and axle configuration.

OPTIONS



Radio Remote Control

Interference protected radio remotes let you get closer to your work and have full control over your machine.



Material Handling Jib

Equip your HiReach platform with a material handling jib crane to handle up to 1,000 pounds.



Boom-Mounted Winch

Take advantage of the 14,000 lb capacity 2 speed hydraulic winch with 1/2" cable and a load indication system.



Outrigger Pad Holders

Outrigger pad holders safely store your pads for travel and leave plenty of room for tool boxes.



Bed Accessories

Mount a wide variety of tool accessories including welders, power washers, and generators on the bed with lines to the platform.



Platform Accessories

Choose from a list of platform accessories including 110V outlets, welding leads, hydraulic tools, and much more.



Outrigger Extensions

Our pin-on outrigger extensions give you extra clearance for work on hills and around guardrails.



Line Body

Let us work with you to customize a line body to secure your tools and supplies the the best way for your application.