



AMERICAN HC 125

Hydraulic Crawler Crane



WORKHORSE

LIFT RATINGS IN POUNDS

With 59H Open Throat Boom, 24' Floating Mast and 51,000 Pound Counterweight Fully Extended

Boom & Mast Length	Radius Feet	Boom Angle Degrees	Side Frames Retracted Pounds	Side Frames Extended Pounds	From Boom Pt. to Ground Feet
50' Boom	12	81.0	250,000*	250,000*	56
	15	77.5	220,620*	220,620*	55
	20	71.5	143,290	165,480*	54
	25	65.3	104,260	127,420	52
	30	58.8	81,610	97,880	49
	35	51.7	66,760	79,210	46
	40	43.9	56,340	66,280	41
50	22.3	42,510	49,600	25	
60' Boom	14	80.6	236,210*	236,210*	66
	15	79.6	220,500*	220,500*	66
	20	74.7	143,310	165,390*	65
	25	69.6	104,240	127,440	63
	30	64.4	81,570	97,880	61
	35	59.0	66,710	79,190	58
	40	53.2	56,310	66,260	54
50	39.8	42,510	49,620	45	
60	20.3	33,800	39,280	27	
70' Boom	16	80.3	203,170	206,570*	76
	20	76.9	143,320	165,300*	75
	25	72.7	104,220	127,460	73
	30	68.3	81,550	97,880	72
	35	63.8	66,680	79,190	69
	40	59.1	56,290	66,240	67
	50	48.9	42,500	49,630	59
60	36.7	33,810	39,310	48	
70	18.8	27,850	32,280	29	
80' Boom	17	80.8	183,940	194,360*	86
	20	78.6	143,220	165,220*	85
	25	74.9	104,090	127,360	84
	30	71.1	81,410	97,750	82
	35	67.3	66,530	79,070	80
	40	63.3	56,130	66,110	78
	50	54.9	42,330	49,480	72
60	45.5	33,640	39,150	63	
70	34.2	27,740	32,140	51	
80	17.5	23,340	27,090	30	
90' Boom	19	80.5	154,580	173,850*	95
	20	79.9	143,180	165,130*	95
	25	76.6	104,030	127,320	94
	30	73.3	81,350	97,700	93
	35	69.9	66,460	79,020	91
	40	66.5	56,080	66,050	89
	50	59.3	42,280	49,440	84
60	51.5	33,600	39,110	77	
70	42.8	27,710	32,100	67	
80	32.2	23,340	27,090	54	
90	16.5	19,990	23,220	32	
100' Boom	20	90.9	143,060	165,040*	105
	25	78.0	103,870	127,190	104
	30	75.0	81,180	97,560	103
	35	72.0	66,270	78,850	102
	40	69.0	55,890	65,860	100
	50	62.7	42,070	49,240	95
	60	56.0	33,380	38,910	89
70	48.7	27,510	31,890	81	
80	40.5	23,150	26,920	71	
90	30.5	19,820	23,060	57	
100	15.6	17,170	20,020	33	

Boom & Mast Length	Radius Feet	Boom Angle Degrees	Side Frames Retracted Pounds	Side Frames Extended Pounds	From Boom Pt. to Ground Feet
110' Boom	22	80.7	124,190	149,880*	115
	25	79.1	103,710	127,050	115
	30	76.4	81,020	97,410	114
	35	73.7	66,100	78,700	112
	40	71.0	55,730	65,710	111
	50	65.3	41,900	49,090	107
	60	59.4	33,210	38,750	101
	70	53.2	27,360	31,730	94
	80	46.3	22,990	26,770	86
	90	38.5	19,660	22,910	75
	100	29.0	17,040	19,890	60
110	14.8	14,910	17,450	34	
120' Boom	23	81.0	116,490	136,390*	125
	25	80.0	103,530	126,910	125
	30	77.6	80,830	97,230	124
	35	75.1	65,900	78,520	123
	40	72.6	55,520	65,500	121
	50	67.5	41,680	48,880	117
	60	62.2	32,970	38,520	113
	70	56.7	27,130	31,500	107
	80	50.7	22,770	26,550	99
	90	44.2	19,440	22,690	90
	100	36.8	16,820	19,680	78
110	27.8	14,700	17,240	62	
120	14.2	12,950	15,240	36	
130' Boom	25	80.8	103,370	122,990*	135
	30	78.5	80,670	97,070	134
	35	76.3	65,720	78,360	133
	40	74.0	55,370	65,350	132
	50	69.3	41,520	48,730	128
	60	64.5	32,810	38,370	124
	70	59.5	26,990	31,350	119
	80	54.2	22,620	26,410	112
	90	48.6	19,300	22,560	104
	100	42.4	16,690	19,550	94
	110	35.3	14,560	17,110	81
120	26.6	12,830	15,120	65	
130	13.6	11,360	13,450	37	
140' Boom	27	80.6	92,710	110,670*	145
	30	79.4	80,470	96,900	144
	35	77.3	65,510	78,180	143
	40	75.2	55,160	65,140	142
	50	70.9	41,290	48,520	139
	60	66.5	32,570	38,150	135
	70	61.9	26,760	31,110	130
	80	57.2	22,390	26,180	124
	90	52.1	19,060	22,330	117
	100	46.7	16,450	19,320	108
	110	40.8	14,330	16,880	98
120	34.0	12,590	14,890	84	
130	25.6	11,120	13,210	67	
140	13.1	9,880	11,800	38	
150' Boom	28	80.8	87,970	97,490*	155
	30	80.1	80,270	96,700	154
	35	78.1	65,300	77,980	153
	40	76.2	54,960	64,940	152
	50	72.2	41,080	48,320	149
	60	68.1	32,360	37,940	146

Boom & Mast Length	Radius Feet	Boom Angle Degrees	Side Frames Retracted Pounds	Side Frames Extended Pounds	From Boom Pt. to Ground Feet
150' Boom (cont.)	70	63.9	26,560	30,900	141
	80	59.6	22,190	25,990	136
	90	55.0	18,860	22,140	129
	100	50.2	16,240	19,120	122
	110	45.0	14,130	16,680	112
	120	39.3	12,390	14,690	101
	130	32.8	10,930	13,020	87
140	24.8	9,680	11,600	69	
150	12.7	8,610	10,380	39	
160' Boom	30	80.7	80,080	84,040*	165
	35	78.9	65,090	77,800	164
	40	77.1	54,740	64,740	163
	50	73.3	40,850	48,100	160
	60	69.6	32,120	37,710	157
	70	65.7	26,320	30,660	152
	80	61.7	21,950	25,760	147
	90	57.5	18,620	21,900	141
	100	53.2	15,990	18,870	134
	110	48.5	13,880	16,440	126
	120	43.5	12,130	14,440	116
130	38.0	10,670	12,770	105	
140	31.7	9,430	11,350	90	
150	24.0	8,360	10,140	71	
160	12.3	7,430	8,870*	40	
170' Boom	31	80.9	73,340*	73,340*	175
	35	79.6	64,880	72,400*	174
	40	77.8	54,540	64,520	173
	50	74.3	40,650	47,910	170
	60	70.8	31,920	37,510	167
	70	67.2	26,140	30,460	163
	80	63.5	21,760	25,570	159
	90	59.6	18,430	21,710	153
	100	55.6	15,810	18,690	147
	110	51.4	13,690	16,260	139
	120	47.0	11,950	14,260	131
130	42.1	10,490	12,590	120	
140	36.8	9,250	11,180	108	
150	30.7	8,180	9,960	93	
160	23.2	7,260	8,780*	73	
170	11.9	6,440	7,530*	41	
180' Boom	33	80.8	64,040*	64,040*	184
	35	80.1	63,580*	63,580*	184
	40	78.5	54,330	62,550*	183
	50	75.2	40,420	47,690	181
	60	71.9	31,670	37,280	178
	70	68.5	25,900	30,220	174
	80	65.1	21,520	25,350	170
	90	61.5	18,190	21,480	165
	100	57.8	15,560	18,450	159
	110	53.9	13,440	16,010	152
	120	49.9	11,690	14,010	144
130	45.6	10,240	12,350	135	
140	40.9	8,990	10,920	124	
150	35.7	7,920	9,710	111	
160	29.8	6,990	8,430*	96	
170	22.5	6,180	7,270*	75	
180	11.5	5,470	6,210*	42	

LIFT RATINGS IN POUNDS (continued)

With 59H Open Throat Boom, 24' Floating Mast and 51,000 Pound Counterweight Fully Extended

Boom & Mast Length	Radius Feet	Boom Angle Degrees	Side Frames Retracted Pounds	Side Frames Extended Pounds	From Boom Pt. to Ground Feet
190' Boom	34	81.0	55,980*	55,980*	194
	35	80.7	55,700*	55,700*	194
	40	79.1	54,110	54,810*	193
	50	76.0	40,190	47,470	191
	60	72.9	31,440	37,060	188
	70	69.7	25,690	29,990	185
	80	66.5	21,320	25,120	181
	90	63.1	17,960	21,260	176
	100	59.7	15,340	18,230	170
	110	56.1	13,220	15,800	164
	120	52.4	11,480	13,800	157
	130	48.5	10,010	12,120	149
	140	44.3	8,760	10,700	139
	150	39.8	7,700	9,410*	128
	160	34.8	6,770	8,120*	115
	170	29.0	5,960	6,970*	98
	180	21.9	5,240	5,960*	77
190	11.2	4,610	5,040*	43	
200' Boom	36	80.8	49,280*	49,280*	204
	40	79.7	48,570*	48,570*	203
	50	76.7	39,950	45,540*	201
	60	73.8	31,200	36,830	199
	70	70.8	25,440	29,750	195
	80	67.7	21,060	24,900	192
	90	64.6	17,710	21,010	187
	100	61.3	15,080	17,980	182
	110	58.0	12,960	15,550	176
	120	54.6	11,220	13,540	169
	130	51.0	9,750	11,870	162
	140	47.2	8,500	10,440*	153
	150	43.1	7,440	8,960*	143
	160	38.7	6,500	7,670*	131
	170	33.8	5,690	6,550*	118
	180	28.3	4,980	5,580*	101
	190	21.4	4,340	4,700*	79
200	10.9	3,780	3,910*	144	
210' Boom	38	80.7	43,610*	43,610*	214
	40	80.2	43,270*	43,270*	214
	50	77.4	39,730	40,510*	212
	60	74.6	30,970	36,610	209
	70	71.7	25,240	29,530	206
	80	68.8	20,850	24,690	202
	90	65.9	17,510	20,820	198
	100	62.8	14,870	17,780	193
	110	59.7	12,750	15,340	188
	120	56.5	11,010	13,340	182
	130	53.1	9,540	11,660	174
	140	49.6	8,300	10,140*	166
	150	46.0	7,230	8,670*	157
	160	42.0	6,300	7,390*	147
	170	37.7	5,490	6,270*	135
	180	33.0	4,770	5,290*	121
	190	27.5	4,130	4,420*	103
200	20.8	3,560	3,650*	81	
210	10.7	2,960*	2,960*	45	
220' Boom	39	80.9	38,720*	38,720*	224
	40	80.6	38,510*	38,510*	224
	50	78.0	35,940*	35,940*	222
	60	75.3	30,730	33,690*	219
	70	72.6	25,000	29,290	217
	80	69.8	20,610	24,460	213
	90	67.0	17,260	20,570	209
	100	64.2	14,630	17,540	205
	110	61.2	12,510	15,100	199
	120	58.2	10,750	13,080	193
	130	55.1	9,280	11,380*	187
	140	51.8	8,040	9,660*	179
	150	48.4	6,970	8,190*	171
	160	44.8	6,040	6,920*	161
	170	41.0	5,230	5,820*	151
	180	36.8	4,500	4,850*	138
	190	32.2	3,860	3,990*	124
200	26.9	3,240*	3,240*	106	
210	20.4	2,570*	2,570*	83	
220	10.4	1,970*	1,970*	46	
230' Boom	41	80.8	34,060*	34,060*	234
	50	78.5	32,230*	32,230*	232
	60	75.9	29,760*	29,760*	230
	70	73.4	24,780	26,690*	227
	80	70.7	20,380	24,230	224
	90	68.1	17,030	20,350	220
	100	65.4	14,390	17,310	216
	110	62.6	12,270	14,860	211
	120	59.7	10,520	12,860	205
	130	56.8	9,060	10,990*	199
	140	53.8	7,810	9,270*	192
	150	50.6	6,730	7,810*	184
	160	47.3	5,800	6,540*	175
	170	43.8	4,980	5,430*	165
	180	40.0	4,260	4,470*	154
	190	36.0	3,630	3,630*	141
	200	31.5	2,870*	2,870*	126
210	26.3	2,210*	2,210*	108	
220	19.9	1,610*	1,610*	84	
230	10.2	1,090*	1,090*	47	
240' Boom	42	80.9	29,830*	29,830*	244
	50	79.0	27,070*	27,070*	242
	60	76.5	25,030*	25,030*	240
	70	74.1	22,350*	22,350*	237
	80	71.6	20,140	21,080*	234
	90	69.0	16,780	19,180*	231
	100	66.4	14,150	17,070	227
	110	63.8	12,010	14,610	222
	120	61.1	10,260	12,500*	217
	130	58.3	8,790	10,480*	211
	140	55.5	7,540	8,770*	204
	150	52.5	6,470	7,310*	197
	160	49.5	5,540	6,050*	189
	170	46.2	4,720	4,960*	180
	180	42.8	4,000	4,000*	169
	190	39.2	3,160*	3,160*	158
	200	35.2	2,410*	2,410*	145
210	30.8	1,760*	1,760*	129	
220	25.7	1,170*	1,170*	110	

LIFT RATINGS IN KILOGRAMS

With 59H Open Throat Boom, 7.3M Floating Mast and 23,134 Kg Counterweight Fully Extended

Boom & Mast Length	Radius Meters	Boom Angle Degrees	Side Frames Retracted Kilograms	Side Frames Extended Kilograms	From Boom Pt. to Ground Meters	
15.2 M Boom	3.7	81.0	113,400*	113,400*	17	
	4.0	79.7	113,400*	113,400*	17	
	4.5	77.8	101,670*	101,670*	17	
	5.0	75.8	88,390	91,510*	17	
	5.5	73.8	75,960	83,170*	17	
	6.0	71.9	66,550	76,260*	17	
	7.0	67.8	53,230	65,380*	16	
	8.0	63.7	44,240	53,770	16	
	9.0	59.4	37,800	45,400	15	
	10.0	54.9	32,920	39,230	14	
	11.0	50.1	29,120	34,480	14	
	12.0	44.9	26,070	30,700	13	
	13.0	39.2	23,560	27,640	12	
	14.0	32.7	21,470	25,120	10	
	15.0	24.7	19,670	22,960	8	
	18.3 M Boom	4.3	80.6	107,140*	107,140*	20
		4.5	79.8	101,620*	101,620*	20
5.0		78.2	88,430	91,470*	20	
5.5		76.6	75,970	83,130*	20	
6.0		75.0	66,560	76,220*	20	
7.0		71.7	53,230	65,340*	19	
8.0		68.4	44,230	53,780	19	
9.0		64.9	37,790	45,400	19	
10.0		61.4	32,900	39,230	18	
11.0		57.7	29,090	34,460	17	
12.0		53.9	26,060	30,690	17	
13.0		49.9	23,550	27,620	16	
14.0		45.6	21,450	25,110	15	
15.0		41.0	19,670	22,970	14	
16.0		35.9	18,130	21,140	13	
17.0		30.0	16,810	19,560	11	
18.0		22.8	15,640	18,180	9	
21.3 M Boom	4.9	80.3	92,160	93,700*	23	
	5.0	79.9	88,440	91,420*	23	
	5.5	78.6	75,990	83,080*	23	
	6.0	77.2	66,570	76,180*	23	
	7.0	74.4	53,230	65,310*	23	
	8.0	71.6	44,220	53,770	22	
	9.0	68.7	37,780	45,410	22	
	10.0	65.8	32,890	39,240	21	
	11.0	62.8	29,080	34,460	21	
	12.0	59.7	26,050	30,690	20	
	13.0	56.5	23,540	27,620	20	
	14.0	53.2	21,440	25,120	19	
	15.0	49.8	19,660	22,970	18	
	16.0	46.1	18,130	21,140	17	
	17.0	42.2	16,810	19,570	16	
	18.0	38.0	15,640	18,190	15	
	19.0	33.4	14,620	16,980	14	
20.0	28.0	13,700	15,910	12		

LIFT RATINGS IN KILOGRAMS (continued)

With 59H Open Throat Boom, 7.3M Floating Mast and 23,134 Kg Counterweight Fully Extended

Boom & Mast Length	Radius Meters	Boom Angle Degrees	Side Frames Retracted Kilograms	Side Frames Extended Kilograms	From Boom Pt. to Ground Meters
24.4 M Boom	5.2	80.8	83,430	88,160*	26
	5.5	80.0	75,950	83,030*	26
	6.0	78.8	66,530	76,140*	26
	7.0	76.4	53,170	65,280*	26
	8.0	74.0	44,160	53,730	25
	9.0	71.5	37,720	45,350	25
	10.0	69.0	32,830	39,180	25
	11.0	66.4	29,000	34,400	24
	12.0	63.8	25,990	30,620	24
	13.0	61.2	23,470	27,550	23
	14.0	58.5	21,370	25,050	23
	15.0	55.6	19,580	22,900	22
	16.0	52.7	18,060	21,080	21
	17.0	49.7	16,730	19,500	21
	18.0	46.5	15,570	18,130	20
	19.0	43.1	14,540	16,910	19
20.0	39.5	13,620	15,830	17	
22.0	31.3	12,090	14,020	15	
24.0	20.4	10,810	12,540	10	
27.4 M Boom	5.8	80.5	70,110	78,850*	29
	6.0	80.1	66,510	76,110*	29
	7.0	77.9	53,160	65,240*	29
	8.0	75.8	44,130	53,700	29
	9.0	73.6	37,680	45,330	28
	10.0	71.4	32,800	39,160	28
	11.0	69.2	28,980	34,380	28
	12.0	66.9	25,960	30,600	27
	13.0	64.6	23,440	27,520	27
	14.0	62.3	21,350	25,030	26
	15.0	59.9	19,560	22,890	26
	16.0	57.4	18,030	21,060	25
	17.0	54.9	16,700	19,480	24
	18.0	52.3	15,550	18,110	24
	19.0	49.6	14,520	16,890	23
	20.0	46.8	13,610	15,820	22
22.0	40.7	12,090	14,000	20	
24.0	33.7	10,810	12,550	17	
26.0	25.1	9,730	11,300	14	
30.5 M Boom	6.1	80.9	64,890	74,860*	32
	7.0	79.2	53,090	65,210*	32
	8.0	77.2	44,050	53,640	32
	9.0	75.3	37,610	45,260	32
	10.0	73.3	32,720	39,090	31
	11.0	71.4	28,890	34,310	31
	12.0	69.4	25,880	30,520	31
	13.0	67.3	23,360	27,440	30
	14.0	65.3	21,250	24,940	30
	15.0	63.2	19,470	22,800	29
	16.0	61.0	17,940	20,980	29
	17.0	58.9	16,610	19,390	28
	18.0	56.6	15,450	18,010	27
	19.0	54.3	14,430	16,810	27
	20.0	52.0	13,510	15,730	26
	22.0	47.0	12,000	13,910	24
24.0	41.6	10,710	12,460	22	
26.0	35.5	9,650	11,230	20	
28.0	28.3	8,750	10,180	16	
30.0	18.7	7,970	9,280	12	
33.5 M Boom	6.7	80.7	56,330	67,980*	35
	7.0	80.2	53,020	65,180*	35
	8.0	78.4	43,980	53,580	35
	9.0	76.7	37,530	45,190	35
	10.0	74.9	32,640	39,030	34
	11.0	73.1	28,810	34,240	34
	12.0	71.3	25,810	30,440	34
	13.0	69.5	23,280	27,360	33
	14.0	67.7	21,180	24,880	33
	15.0	65.8	19,390	22,730	33
	16.0	63.9	17,860	20,900	32
	17.0	62.0	16,530	19,310	32
	18.0	60.0	15,370	17,940	31
	19.0	58.0	14,340	16,730	30
	20.0	56.0	13,430	15,650	30
	22.0	51.7	11,920	13,830	28
36.6 M Boom	7.0	81.0	52,840	61,860*	38
	8.0	79.4	43,890	53,510	38
	9.0	77.8	37,450	45,120	38
	10.0	76.2	32,550	38,950	38
	11.0	74.6	28,710	34,150	37
	12.0	72.9	25,710	30,350	37
	13.0	71.3	23,180	27,270	37
	14.0	69.6	21,070	24,780	36
	15.0	67.9	19,300	22,640	36
	16.0	66.2	17,760	20,810	35
	17.0	64.5	16,430	19,220	35
	18.0	62.7	15,260	17,840	35
	19.0	61.0	14,230	16,620	34
	20.0	59.1	13,320	15,550	33
	22.0	55.4	11,820	13,720	32
	24.0	51.5	10,550	12,300	31
26.0	47.3	9,480	11,060	29	
28.0	42.9	8,570	10,010	27	
30.0	38.0	7,800	9,120	24	
32.0	32.6	7,130	8,350	22	
34.0	26.1	6,530	7,670	18	
36.0	17.6	6,010	7,070	13	
39.6 M Boom	7.6	80.8	46,880	55,780*	41
	8.0	80.2	43,810	53,420	41
	9.0	78.7	37,380	45,050	41
	10.0	77.3	32,470	38,880	41
	11.0	75.8	28,640	34,080	40
	12.0	74.3	25,640	30,280	40
	13.0	72.8	23,110	27,190	40
	14.0	71.2	21,010	24,720	40
	15.0	69.7	19,220	22,570	39
	16.0	68.2	17,680	20,730	39
	17.0	66.6	16,360	19,150	38
	18.0	65.0	15,190	17,770	38
	19.0	63.4	14,160	16,560	37
	20.0	61.7	13,320	15,480	37
	22.0	58.4	11,760	13,660	36
	24.0	54.9	10,480	12,240	34
26.0	51.3	9,410	11,000	33	
28.0	47.5	8,520	9,960	31	
30.0	43.4	7,740	9,060	29	
32.0	39.0	7,060	8,280	27	
34.0	34.1	6,480	7,610	24	
36.0	28.5	5,960	7,020	21	
38.0	21.5	5,500	6,490	16	
42.7 M Boom	8.2	80.6	42,050	50,200*	44
	9.0	79.6	37,300	44,970	44
	10.0	78.2	32,380	38,800	44
	11.0	76.8	28,540	34,000	44
	12.0	75.4	25,540	30,190	43
	13.0	74.0	23,020	27,100	43
	14.0	72.6	20,910	24,630	43
	15.0	71.2	19,120	22,480	42
	16.0	69.8	17,580	20,640	42
	17.0	68.3	16,250	19,050	42
	18.0	66.9	15,080	17,660	41
	19.0	65.4	14,060	16,460	41
	20.0	63.9	13,220	15,380	40
	22.0	60.9	11,660	13,550	39
	24.0	57.8	10,380	12,130	38
	26.0	54.5	9,300	10,890	37
28.0	51.1	8,410	9,850	35	
30.0	47.6	7,630	9,050	33	
32.0	43.8	6,950	8,180	32	
34.0	39.8	6,370	7,510	29	
36.0	35.3	5,850	6,920	27	
38.0	30.3	5,380	6,380	23	
40.0	24.4	4,970	5,910	20	
42.0	16.7	4,600	5,480	14	
45.7 M Boom	8.5	80.8	39,900	44,220*	47
	9.0	80.3	37,210	43,990*	47
	10.0	79.0	32,290	38,720	47
	11.0	77.7	28,440	33,910	47
	12.0	76.4	25,450	30,100	47
	13.0	75.1	22,920	27,010	46
	14.0	73.8	20,810	24,530	46
	15.0	72.5	19,030	22,390	46
	16.0	71.2	17,490	20,550	45
	17.0	69.9	16,160	18,960	45
	18.0	68.5	14,990	17,580	45
	19.0	67.2	13,960	16,360	44
	20.0	65.8	13,130	15,280	44
	22.0	63.0	11,560	13,450	43
	24.0	60.2	10,280	12,040	42
	26.0	57.2	9,220	10,810	40
28.0	54.2	8,310	9,760	39	
30.0	51.0	7,530	8,860	38	
32.0	47.7	6,870	8,100	36	
34.0	44.2	6,270	7,420	34	
36.0	40.4	5,750	6,820	32	
38.0	36.4	5,290	6,290	29	
40.0	31.9	4,880	5,820	26	
42.0	26.7	4,500	5,390	22	
44.0	20.4	4,170	5,010	18	
48.8 M Boom	9.1	80.7	36,330	38,030*	50
	10.0	79.7	32,190	37,680*	50
	11.0	78.5	28,340	33,820	50
	12.0	77.3	25,360	30,000	50
	13.0	76.1	22,820	26,910	49
	14.0	74.9	20,710	24,440	49
	15.0	73.6	18,920	22,280	49
	16.0	72.4	17,380	20,440	49
	17.0	71.2	16,040	18,850	48
	18.0	69.9	14,880	17,470	48
	19.0	68.7	13,850	16,250	47
	20.0	67.4	13,020	15,170	47
	22.0	64.8	11,450	13,340	46
	24.0	62.2	10,180	11,940	45
	26.0	59.5	9,110	10,700	44
	28.0	56.7	8,200	9,650	43
30.0	53.8	7,420	8,750	41	
32.0	50.9	6,750	7,980	40	
34.0	47.8	6,160	7,300	38	
36.0	44.5	5,650	6,710	36	
38.0	41.0	5,180	6,180	34	
40.0	37.3	4,770	5,710	31	
42.0	33.2	4,390	5,280	29	
44.0	28.5	4,060	4,900	25	
46.0	23.1	3,750	4,550	21	
48.0	16.0	3,470	4,190*	15	
51.8 M Boom	9.4	80.9	33,270*	33,270*	53
	10.0	80.3	32,100	32,980*	53
	11.0	79.2	28,250	32,720*	53
	12.0	78.0	25,270	29,910	53
	13.0	76.9	22,740	26,810	53
	14.0	75.8	20,620	24,360	52
	15.0	74.6	18,830	22,200	52
	16.0	73.5	17,290	20,360	52
	17.0	72.3	15,950	18,770	51
	18.0	71.2	14,780	17,380	51
	19.0	70.0	13,750	16,160	51
	20.0	68.8	12,940	15,090	50
	22.0	66.4	11,380	13,250	50
	24.0	64.0	10,090	11,860	49
	26.0	61.5	9,020	10,610	48
	28.0	58.9	8,110	9,570	46
30.0	56.3	7,340	8,680	45	
32.0	53.6	6,670	7,900	44	
34.0	50.8	6,080	7,220	42	
36.0	47.8	5,560	6,630	40	
38.0	44.8	5,100	6,100	38	
40.0	41.5	4,680	5,620	36	
42.0	38.0	4,310	5,200	34	

(Continued)

LIFT RATINGS IN KILOGRAMS (continued)

With 59H Open Throat Boom, 7.3M Floating Mast and 23,134 Kg Counterweight Fully Extended

Boom & Mast Length	Radius Meters	Boom Angle Degrees	Side Frames Retracted Kilograms	Side Frames Extended Kilograms	From Boom Pt. to Ground Meters	
51.8 M Boom (cont.)	44.0	34.3	3,980	4,820	31	
	46.0	30.1	3,670	4,470	28	
	48.0	25.3	3,390	4,130*	24	
	50.0	19.4	3,130	3,750*	19	
54.9 M Boom	10.1	80.8	29,050*	29,050*	56	
	11.0	79.8	28,150	28,740*	56	
	12.0	78.7	25,170	28,430*	56	
	13.0	77.7	22,630	26,720	56	
	14.0	76.6	20,510	24,260	55	
	15.0	75.5	18,720	22,100	55	
	16.0	74.4	17,190	20,260	55	
	17.0	73.3	15,850	18,670	55	
	18.0	72.2	14,680	17,280	54	
	19.0	71.1	13,640	16,060	54	
	20.0	70.0	12,830	14,970	54	
	22.0	67.8	11,260	13,250	53	
	24.0	65.5	9,980	11,750	52	
	26.0	63.2	8,910	10,510	51	
	28.0	60.8	8,010	9,470	50	
	30.0	58.4	7,230	8,570	49	
	32.0	55.9	6,550	7,790	47	
	34.0	53.3	5,960	7,110	46	
	36.0	50.7	5,450	6,520	44	
	38.0	47.9	4,980	5,990	43	
40.0	45.0	4,570	5,520	41		
42.0	42.0	4,200	5,090	39		
44.0	38.7	3,850	4,700	36		
46.0	35.2	3,550	4,360	34		
48.0	31.4	3,280	3,970*	31		
50.0	27.1	3,010	3,600*	27		
52.0	22.0	2,780	3,260*	23		
54.0	15.5	2,570	2,950*	17		
57.9 M Boom	10.4	81.0	25,390*	25,390*	59	
	11.0	80.3	25,210*	25,210*	59	
	12.0	79.3	24,890*	24,890*	59	
	13.0	78.3	22,530	24,500*	59	
	14.0	77.3	20,420	24,110*	59	
	15.0	76.3	18,620	22,000	58	
	16.0	75.3	17,080	20,160	58	
	17.0	74.2	15,740	18,560	58	
	18.0	73.2	14,580	17,180	57	
	19.0	72.2	13,540	15,960	57	
	20.0	71.1	12,730	14,870	57	
	22.0	69.0	11,160	13,150	56	
	24.0	66.9	9,880	11,650	55	
	26.0	64.7	8,810	10,410	54	
	28.0	62.5	7,910	9,360	53	
	30.0	60.2	7,130	8,460	52	
	32.0	57.9	6,450	7,690	51	
	34.0	55.5	5,870	7,020	50	
	36.0	53.1	5,340	6,420	48	
	38.0	50.6	4,880	5,880	47	
40.0	48.0	4,470	5,420	45		
42.0	45.2	4,090	4,990	43		
44.0	42.3	3,750	4,600	41		
46.0	39.3	3,450	4,210*	39		
48.0	36.1	3,180	3,830*	36		
50.0	32.5	2,910	3,460*	33		
52.0	28.6	2,680	3,140*	30		
54.0	24.1	2,470	2,830*	26		
56.0	18.7	2,270	2,550*	120		
61.0 M Boom	11.0	80.8	22,350*	22,350*	62	
	12.0	79.9	22,050*	22,050*	62	
	13.0	78.9	21,700*	21,700*	62	
	14.0	77.9	20,320	21,190*	62	
	15.0	77.0	18,520	20,850*	61	
	16.0	76.0	16,970	20,060	61	
	17.0	75.0	15,630	18,460	61	
	18.0	74.1	14,460	17,070	61	
	19.0	73.1	13,420	15,850	60	
	20.0	72.1	12,620	14,760	60	
	22.0	70.1	11,060	13,050	59	
	61.0 M Boom	24.0	68.1	9,770	11,550	59
		26.0	66.1	8,700	10,300	58
		28.0	64.0	7,790	9,250	57
30.0		61.9	7,010	8,350	56	
32.0		59.7	6,340	7,580	55	
34.0		57.5	5,750	6,900	53	
36.0		55.2	5,220	6,300	52	
38.0		52.9	4,760	5,770	51	
40.0		50.5	4,350	5,300	49	
42.0		48.0	3,970	4,870	47	
44.0		45.4	3,640	4,440*	45	
46.0		42.7	3,330	4,010*	43	
48.0		39.8	3,050	3,620*	41	
50.0		36.8	2,800	3,270*	38	
52.0		33.5	2,560	2,950*	36	
54.0		29.9	2,340	2,650*	32	
56.0		25.9	2,140	2,370*	29	
58.0		21.1	1,960	2,120*	24	
60.0		15.0	1,780	1,880*	18	
64.0 M Boom		11.6	80.7	19,780*	19,780*	65
	12.0	80.3	19,640*	19,640*	65	
	13.0	79.4	19,330*	19,330*	65	
	14.0	78.5	18,870*	18,870*	65	
	15.0	77.6	18,420	18,430*	65	
	16.0	76.7	16,880	18,140*	64	
	17.0	75.8	15,540	17,560*	64	
	18.0	74.8	14,360	16,970	64	
	19.0	73.9	13,330	15,750	64	
	20.0	73.0	12,530	14,660	63	
	22.0	71.1	10,960	12,950	63	
	24.0	69.2	9,680	11,450	62	
	26.0	67.3	8,600	10,210	61	
	28.0	65.3	7,690	9,160	60	
	30.0	63.3	6,920	8,270	59	
	32.0	61.3	6,250	7,490	58	
	34.0	59.2	5,650	6,810	57	
	36.0	57.1	5,130	6,210	56	
	38.0	54.9	4,670	5,680	54	
	40.0	52.7	4,250	5,210	53	
42.0	50.4	3,880	4,760*	51		
44.0	48.1	3,250	4,300*	50		
46.0	45.6	3,240	3,870*	48		
48.0	43.0	2,960	3,490*	46		
50.0	40.3	2,700	3,140*	43		
52.0	37.5	2,470	2,820*	41		
54.0	34.4	2,250	2,520*	38		
56.0	31.1	2,050	2,250*	35		
58.0	27.4	1,870	2,000*	31		
60.0	23.1	1,690	1,760*	27		
62.0	18.0	1,540	1,550*	22		
64.0	10.7	1,340*	1,340*	14		
67.1 M Boom	11.9	80.9	17,560*	17,560*	68	
	12.0	80.8	17,560*	17,560*	68	
	13.0	79.9	17,280*	17,280*	68	
	14.0	79.1	16,730*	16,730*	68	
	15.0	78.2	16,430*	16,430*	68	
	16.0	77.3	15,910*	15,910*	67	
	17.0	76.4	15,420	15,660*	67	
	18.0	75.6	14,250	15,160*	67	
	19.0	74.7	13,220	14,930*	67	
	20.0	73.8	12,420	14,560	66	
	22.0	72.0	10,850	12,850	66	
	24.0	70.2	9,560	11,350	65	
	26.0	68.3	8,500	10,110	64	
	28.0	66.5	7,590	9,050	64	
	30.0	64.6	6,810	8,150	63	
	32.0	62.7	6,130	7,370	62	
	34.0	60.8	5,540	6,690	61	
	36.0	58.8	5,020	6,100	59	
	38.0	56.7	4,550	5,570	58	
	40.0	54.7	4,140	5,060*	57	
42.0	52.5	3,760	4,540*	55		
44.0	50.4	3,430	4,080*	54		
67.1 M Boom (cont.)	46.0	48.1	3,120	3,660*	52	
	48.0	45.8	2,840	3,280*	50	
	50.0	43.3	2,580	2,930*	48	
	52.0	40.8	2,340	2,610*	46	
	54.0	38.0	2,130	2,320*	43	
	56.0	35.2	1,930	2,050*	41	
	58.0	32.1	1,740	1,800*	38	
	60.0	28.7	1,570	1,570*	34	
	62.0	24.9	1,360*	1,360*	30	
	64.0	20.4	1,170*	1,170*	25	
	70.1 M Boom	12.5	80.8	15,450*	15,450*	71
		13.0	80.4	15,210*	15,210*	71
		14.0	79.5	14,960*	14,960*	71
		15.0	78.7	14,730*	14,730*	71
16.0		77.9	14,290*	14,290*	71	
17.0		77.0	13,800*	13,800*	70	
18.0		76.2	13,580*	13,580*	70	
19.0		75.3	12,630*	12,630*	70	
20.0		74.5	12,320	12,410*	70	
22.0		72.8	10,760	11,970*	69	
24.0		71.1	9,470	11,250	68	
26.0		69.3	8,390	10,000	68	
28.0		67.6	7,480	8,950	67	
30.0		65.8	6,700	8,050	66	
32.0	64.0	6,020	7,270	65		
34.0	62.2	5,440	6,590	64		
36.0	60.3	4,910	5,990	63		
38.0	58.4	4,450	5,450*	62		
40.0	56.4	4,030	4,880*	60		
42.0	54.4	3,660	4,370*	59		
44.0	52.4	3,320	3,900*	58		
46.0	50.3	3,010	3,480*	56		
48.0	48.1	2,740	3,110*	54		
50.0	45.9	2,470	2,760*	52		
52.0	43.6	2,240	2,440*	50		
54.0	41.1	2,020	2,150*	48		
56.0	38.6	1,830	1,890*	46		
58.0	35.9	1,630*	1,630*	43		
60.0	33.0	1,410*	1,410*	40		
62.0	29.8	1,190*	1,190*	37		
64.0	26.3	1,000*	1,000*	33		
73.2 M Boom	12.8	80.9	13,530*	13,530*	74	
	13.0	80.8	13,500*	13,500*	74	
	14.0	80.0	12,670*	12,670*	74	
	15.0	79.2	11,920*	11,920*	74	
	16.0	78.4	11,780*	11,780*	74	
	17.0	77.6	11,650*	11,650*	74	
	18.0	76.8	11,020*	11,020*	73	
	19.0	76.0	10,930*	10,930*	73	
	20.0	75.2	10,850*	10,850*	73	
	22.0	73.5	10,250*	10,250*	72	
	24.0	71.9	9,350	9,730*	72	
	26.0	70.2	8,280	9,270*	71	
	28.0	68.6	7,360	8,830	70	
	30.0	66.9	6,590	7,940	69	
32.0	65.1	5,910	7,160	68		
34.0	63.4	5,320	6,480	67		
36.0	61.6	4,790	5,860*	66		
38.0	59.8	4,330	5,220*	65		
40.0	58.0	3,920	4,650*	64		
42.0	56.1	3,540	4,140*	63		
44.0	54.2	3,200	3,670*	61		
46.0	52.3</					

CRANE RATING DATA

▲ WARNING

These lift ratings are invalid if the crane has been modified or altered by use of other than **GENUINE AMERICAN PARTS** as such modifications or alterations may affect its capacity or safe operation. See American Crane Corporation Service Bulletin #259.

The ratings in this chart are for planning purposes only. Only those ratings specifically assigned to a crane and mounted in the operator's cab or in the Operator's Manual should be used for actual operation.

Ratings in this chart are in POUNDS (Kgs) and do not exceed the percentage of tipping specified for this crane by ANSI B30.5. All ratings require that the crane be standing level on a firm uniformly supporting surface.

Do not lift loads in excess of those shown on this chart. Lifting loads in excess of those shown or operation not in accordance with good operating practice, including limitations shown on page 3499 of Operator's Manual, can cause tipping, structural damage or catastrophic failure.

Asterisk (*) areas on this chart indicate ratings which are limited by strength of material or factors other than stability (tipping).

"RADIUS IN FEET" is the horizontal distance at ground level from the crane centerline of rotation to a vertical line through the center of gravity of the suspended load.

When using the main boom fall with jib in place, the main fall ratings must be reduced by the jib effective weight shown on the jib rating chart plus twice the weight of all suspended blocks, slings, rope, etc., at the jib fall.

When using the main boom fall with boom tip extension in place, the main fall ratings must be reduced by the weight of the boom tip extension plus twice the weight of all suspended blocks, slings, rope, etc., at the boom tip extension fall.

Blocks, slings, buckets and other load carrying devices are considered part of the load. The weight of standard hoisting ropes for the rating at a given radius has been calculated as part of the boom point load and need not be considered in determining net allowable loads.

This chart was developed exclusively for use with a boom only. Under no circumstances are these ratings to be interpreted for use with a jib.

Ratings shown on this chart make no allowance for such factors as out of plumb loads, wind, poor soil conditions, improper inflation of rubber tires and dynamic effects due to excessive operating speeds. The user (operator) must exercise judgement to make allowance for these conditions. See page 3499 of Operator's Manual for detailed information.

No account is taken of the wind force on the load. This effect, which can be substantial for loads with large surface areas, must be considered by the user. In any wind it is strongly recommended that taglines be used to control the load.

MAST HOIST LINE is 17 parts of .75 inch (19 mm) diameter 6 x 26, WS, FW, RAL, IWRC, EIPS wire rope with a minimum breaking strength of 58,800 pounds (26,672 Kg).

PENDANT SUSPENSION LINE is 2 parts of 1.375 inch (35 mm) diameter EEIPS wire rope with a minimum breaking strength of 211,000 pounds (95,710 Kg).

MAIN LOAD LINE is 1 inch (25 mm) diameter 6 x 25, RRL, IWRC, EIPS wire rope with a minimum breaking strength of 103,400 pounds (46,901 Kg).

Erection "OVER THE END" is with the boom over the idler end with idler tumblers blocked (See Operator's Manual for blocking instructions). Erection "OVER THE SIDE" is with the boom 90° to the side frames and with the side frames extended. Blocks, slings and other load carrying devices must be on the ground during erection.

LOAD HOISTING INFORMATION

Maximum Lifting Capacity in Pounds	Minimum Parts of Line	Maximum Hoisting Distance in Feet	
		Main (Front)	Aux. (rear)
250,000	9	160	160
236,000	8	180	180
206,500	7	200	200
177,000	6	240	240
147,500	5	290	290
118,000	4	360	360
88,500	3	480	480
59,000	2	730	730
29,500	1	1,460	1,460

Maximum Lifting Capacity in Kilograms	Minimum Parts of Line	Maximum Hoisting Distance in Meters	
		Main (Front)	Aux. (rear)
113,400	9	49	49
107,049	8	55	55
93,668	7	61	61
80,287	6	73	73
66,906	5	88	88
53,524	4	110	110
40,143	3	146	146
26,762	2	223	223
13,381	1	445	445

BOOM COMPOSITION CHART

Boom Length		25' (7.6 M) 59H Inner	10' (3.0 M) 59H Center	20' (6.1 M) 59H Center	40' (12.2 M) 59H Center	25' (7.6 M) 59H Outer
Feet	Meters					
50	15.2	1	0	0	0	1
60	18.3	1	1	0	0	1
70	21.3	1	0	1	0	1
80	24.4	1	1	1	0	1
90	27.4	1	0	0	1	1
100	30.5	1	1	0	1	1
110	33.5	1	0	1	1	1
120	36.6	1	1	1	1	1
130	39.6	1	0	0	2	1
140	42.7	1	1	0	2	1

Boom Length		25' (7.6 M) 59H Inner	10' (3.0 M) 59H Center	20' (6.1 M) 59H Center	40' (12.2 M) 59H Center	25' (7.6 M) 59H Outer
Feet	Meters					
150	45.7	1	0	1	2	1
160	48.8	1	1	1	2	1
170	51.8	1	0	0	3	1
180	54.9	1	1	0	3	1
190	57.9	1	0	1	3	1
200	61.0	1	1	1	3	1
210	64.0	1	0	0	4	1
220	67.1	1	1	0	4	1
230	70.1	1	0	1	4	1
240	73.2	1	1	1	4	1

MAXIMUM BOOM & JIB SELF-ERECTION DATA

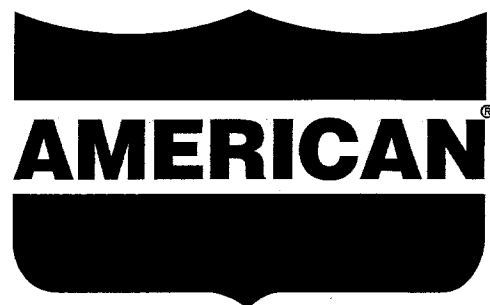
Jib	Over the End				Over the Side			
	Boom Length		Jib Length		Boom Length		Jib Length	
	Feet	Meters	Feet	Meters	Feet	Meters	Feet	Meters
#9HL	240	73.2	0	0.0	230	70.1	0	0.0
	230	70.1	40	12.2	220	67.1	0	0.0
	220	67.1	80	24.4	210	64.0	40	12.2
	-	-	-	-	200	61.0	50	15.2
	-	-	-	-	190	57.9	60	18.3
	-	-	-	-	180	54.9	70	21.3
	-	-	-	-	-	-	-	-

WEIGHTS

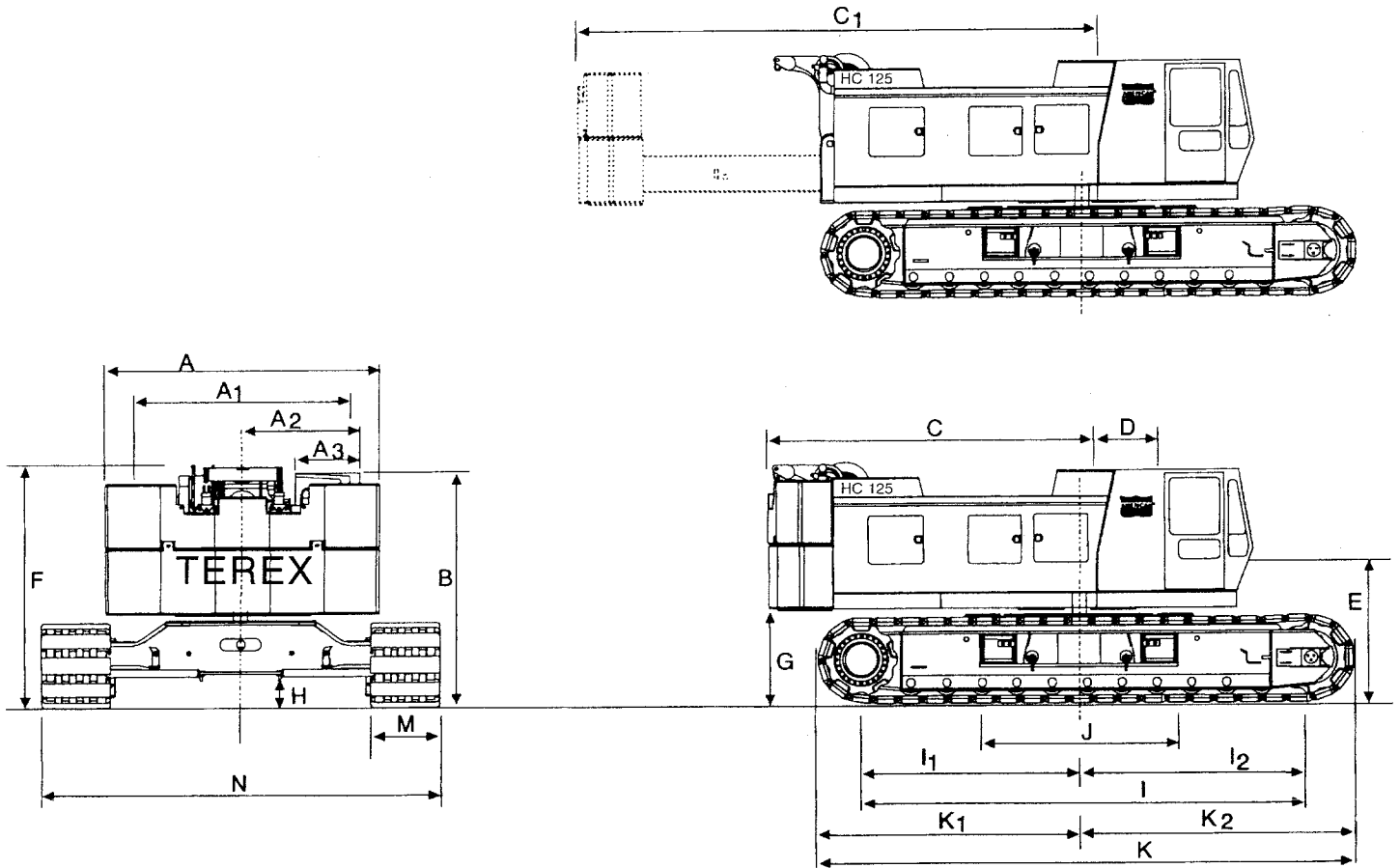
	LBS.	KG
Lifting Crane with standard counterweight, 50' (15.2 mm) boom with offset tip, transport package, 3rd drum and 38" (965 mm) shoes	209,740	95,137
Lifting crane equipped as above and 44" (1,117 mm) shoes	213,030	96,629
Counterweight Including:		
Basic	52,150	23,665
Overlay	31,000	14,061
2 Removal Cylinders	20,000	9,072
Crane boom outer (six sheave)	1,150	522
Crane boom inner (and misc.)	3,260	1,480
Crane boom inner (and misc.)	4,345	1,971
Crawler side frames 38" (965 mm) shoes	70,590	32,020
Crawler Side Frames 44" (1,117 mm) shoes	73,880	33,500
Travel weight includes upper, carbody, transportation package, boom inner, counterweight handling sheaves and third drum	83,740	37,985
Second swing motor	580	263

GROUND PRESSURES

Lifting crane with 50 ft. (15.2 mm) boom with offset tip and standard counterweight.	
38" (965 mm) shoes	44" (1,117 mm) shoes
10.5 PSI	9.03 PSI

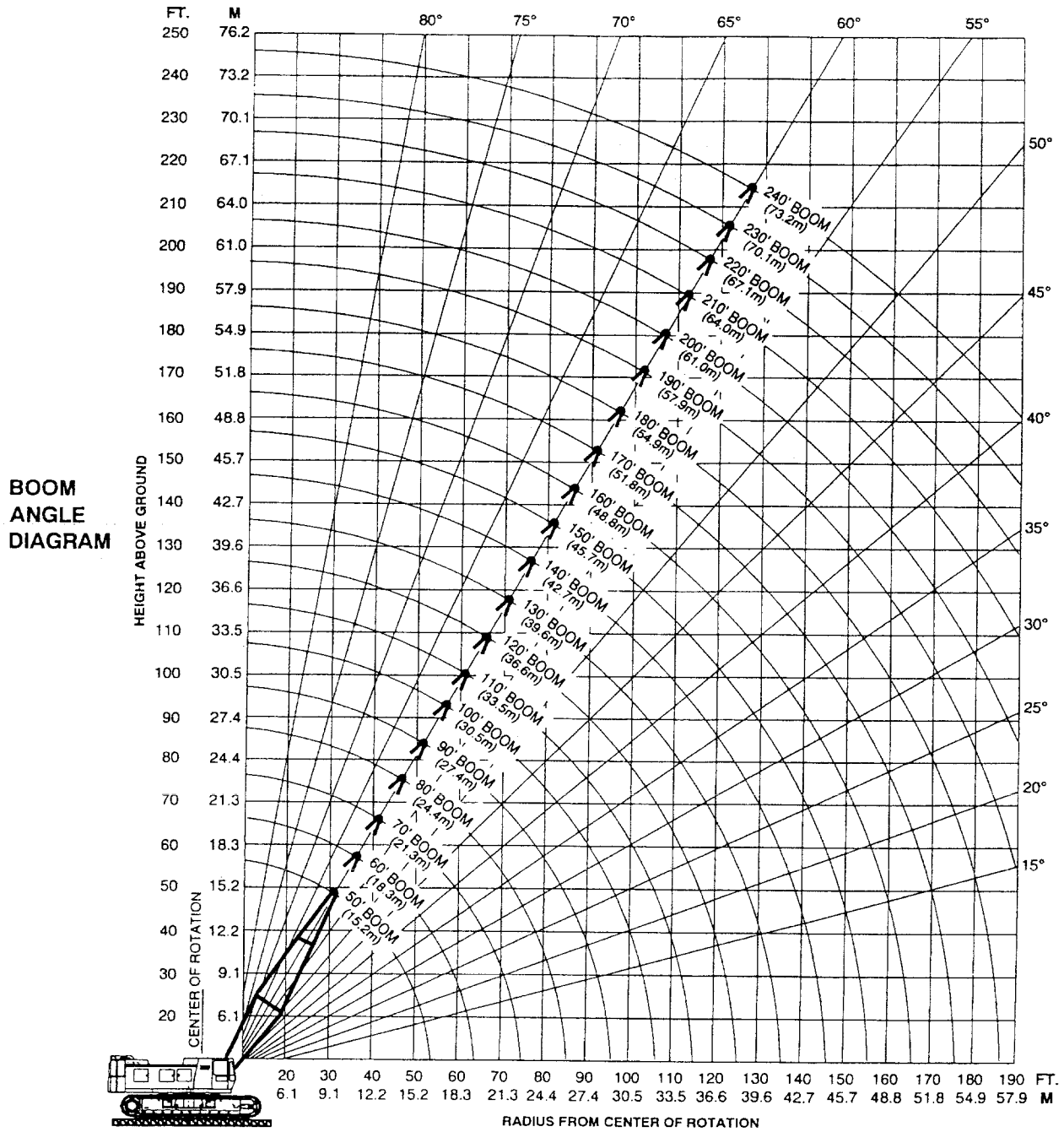


HC 125 WORKHORSE GENERAL DIMENSIONS



		FEET	MM			FEET	MM
A	Width of counterweight	14'-0"	4,267	I ₂	Center of idler tumbler to center of rotation	10' 11-5/8"	3,342
A ₁	Width of machinery cab	11'-5"	3,480	J	Width of carbody (including vertical jacks)	10'-10"	3,300
A ₂	Centerline of machine to outside of operator's cab	6'-0"	1,829	K	Overall length of crawlers	24' 7-9/16"	7,507
A ₃	Width of operator's cab	3'-4"	1,016	K ₁	Over drive tumbler to center of rotation	12' 0-1/2"	3,670
B	Height over operator's cab	12'-0"	3,658	K ₂	Over idler tumbler to center of rotation	12' 7-1/16"	3,836
C	Tail swing w/WorkHorse retracted	16'-3"	4,953	M	Width of tread shoe (standard)	38"	965
C ₁	Tail swing w/WorkHorse extended	26'-3"	8,001		(optional)	44"	1,118
D	Center rotation to boom feet	3'-6"	1,066	N	Overall width of crawlers		
E	Ground to center of boom foot	6'-8"	2,032		38" (966 mm) shoes retracted	15'-2"	4,623
F	Height over boom hoist	12' 3-9/16"	3,748		38" (966 mm) shoes extended	18'-5"	5,613
G	Ground to bottom of counterweight	4' 6-3/4"	1,391		44" (1,118 mm) shoes retracted	15'-8"	4,775
H	Minimum ground clearance	1' 7-1/2"	495		44" (1,118 mm) shoes extended	18'-11"	5,766
I	Center to center of crawler tumblers	20' 10-5/16"	6,358	N ₁	Length over crawler axles	15'-2"	4,623
I ₁	Center of drive tumbler to center of rotation	9' 10-3/4"	3,016				

AMERICAN MODEL HC 125WH WORKING RANGES



For more information, product demonstration, or details on sales, lease and rental plans, please contact your local Terex American Crane Distributor.

We reserve the right to amend these specifications at any time without notice. The only warranty applicable is our standard written warranty applicable to the particular product and sale. We make no other warranty, expressed or implied.

TEREX **TEREX CRANES**

AMERICAN CRANE CORPORATION
 202 Raleigh Street • Wilmington, NC 28412 USA
 (910) 395-8500 • FAX: (910) 395-8538