

Technical Data

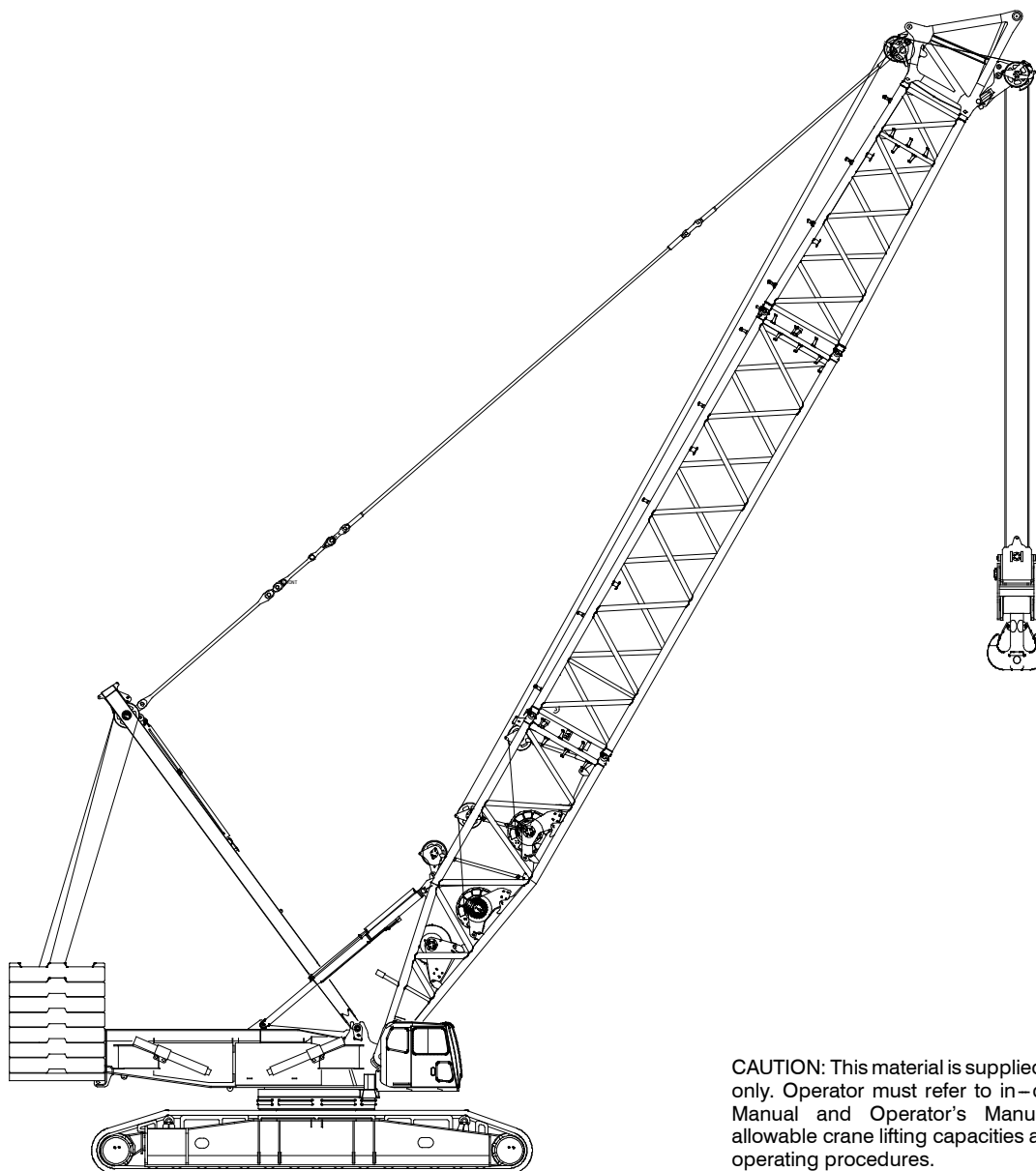
Specifications & Capacities

548

Crawler Crane

550 Ton (500 metric ton)

600 Ton (550 metric ton) Heavy Lift Attachment



CAUTION: This material is supplied for reference use only. Operator must refer to in-cab Crane Rating Manual and Operator's Manual to determine allowable crane lifting capacities and assembly and operating procedures.

Table Of Contents

Upper Structure	1
Frame	1
Engine	1
Hydraulic System	1
“W1” & “W2” Load Hoist Drums	1
“W3” Boom Hoist Drum	2
“W4” Luffing Jib Hoist Drum – Optional	2
Boom Hoist System	2
Swing System	2
Counterweight/Upper	2
Operator’s Cab	2
Rated Capacity Limiter System	2
Machinery Cab	2
Upper Frame Jacks – Optional	2
Lower Structure	3
Carbody	3
Side Frames	3
Travel and Steering	3
Jack System	3
Undecking Device – Optional	3
Carbody (Lower) Counterweight	3
Attachment and Options	4
Heavy Duty Boom	4
Long Range Boom	4
Heavy Duty Boom Auxiliary HD Top Section	4
Heavy Duty Boom Auxiliary Tip Extension	4
Long Range/Luffer Auxiliary Tip Extension	4
Options Under Design	4
Luffing Boom	5
Luffing Jib	5
General Dimensions	6
Heavy Duty Boom	6
Long Range Boom	7
Base Crane	8
Side Frames	8
Upper Counterweights	9
Lower Counterweights	9
Boom Extensions	10
Heavy Duty “HD” Extensions	10
Long Range “LR” Extensions	10
Luffing Jib	13
Hook Blocks	14
Hook Balls	14
Assembly Diagram (With Undecking Features)	15

Transport Weights	16
Transport Drawings (With Undecking Features)	17
Load Hoist Performance	18
Working Areas	19
Attachments	20
Super Lift Attachment Options	21
Boom Make–up Illustrations	22
Heavy Duty Boom	23
Boom Make–Up	23
Working Range Diagram – 360°	24
Load Chart	25
Working Range Diagram – 217'–315' HD Main Boom With HD Auxiliary Tip Ext.	26
Load Chart	27
Long Range Boom	28
Boom Make–Up	28
Working Range Diagram – 360°	29
Load Chart	30
Luffing Attachment	31
Luffing Boom Make–Up	31
Luffing Jib Make–Up	31
Working Range Diagram – 86° Boom Angle	32
Working Range Diagram – 75° Boom Angle	33
Working Range Diagram – 65° Boom Angle	34
Load Charts	35

Upper Structure

Frame

All welded and precision machined surfaces.

Turntable Bearing

- Outer race bolted to upper frame; inner race with internal swing gears bolted to lower frame.

Engine

Engine

Full pressure lubrication, oil filter, air cleaner, hour meter, throttle, and electric control shutdown.

Isuzu 6WGI Tier III

Number of cylinders	6
Bore and stroke	5.79 x 6.06 in (147 x 153mm)
Piston displacement	957 in ³ (15.7L)
Engine rpm at full load speed	2,000
Hi-idle rpm	2,100
Gross engine hp	532 hp (397kw)
Peak torque	1,527 ft lb (2070joule) @ 1,500 rpm
Electrical system	24 volt
Fuel tank capacity	211 gal (800L)
Batteries	2 – 12 volt

Fuel Tank

Equipped with fuel sight level gauges, flame arrester, and self-closing cap with locking eye for padlock.

Hydraulic System

Hydraulic Pumps

The pump arrangement is designed to provide hydraulically powered functions allowing positive, precise control with independent or simultaneous operation of all crane functions.

- Four variable displacement pumps operating at 4,553 psi (320kg/cm²) and 79 gal/min (359L/min) powers the load hoist drums, boom hoist drums, and travel.
- Two variable displacement pumps operating at 4,553 psi (320kg/cm²) and 38 gal/min (173L/min) powers the lower jacks, boom foot pin self assembly cylinder, and swing.
- One variable displacement pump operating at 4,553 psi (320kg/cm²) and 21.4 gal/min (97L/min) powers backstops, cab tilt cylinder, and live mast flip cylinders.
- One variable displacement pump operating at 3,434 psi (241kg/cm²) and 20.3 gal/min (92L/min) powers the radiator and oil cooler fan.
- One fixed displacement gear type pump operating at 2,988 psi (210kg/cm²) and 36.6 gal/min (166L/min) powers the remote control valves.

Remote Oil Cooler

Oil cooler, located behind the operator's cab, has a hydraulically driven, thermostatically controlled fan to control oil temperature.

Pump Control “Fine Inching” Mode

Special pump setting, selectable from the operator's cab, that allows very slow movements of load hoist drums, boom hoist drum, and travel for precision work.

Hydraulic Reservoir

211 gal (800L), equipped with sight level gauge. Diffusers built in for deaeration.

Filtration

Ten micron, full flow, line filter in the control circuit. All oil is filtered prior to entering the reservoir.

Counterbalance Valves

All hoist motors are equipped with counterbalance valves to provide positive load lowering and prevent accidental load drop if the hydraulic pressure is suddenly lost.

“W1” & “W2” Load Hoist Drums

Each drum contains a pilot controlled, bi-directional, axial piston motor and a planetary gear reduction unit to provide positive control under all load conditions.

- Power up/down
- Automatic brake mode (spring applied, hydraulically released, band type brake)
- Drum pawl controlled manually
- Electronic drum rotation indicators
- Mounted on anti-friction bearings
- 23.46 in (59.6cm) root diameter
- 43.31 in (110.0cm) flange diameter
- 49.19 in (124.9cm) width

The automatic brake mode meets all OSHA requirements for personnel handling.

“W3” Boom Hoist Drum

Contains a pilot controlled, bi-directional, axial piston motor and a planetary gear reduction unit to provide positive control under all load conditions.

- Spring applied, hydraulically released, disc type brake controlled automatically
- Electronic drum rotation indicators
- Drum pawl controlled automatically
- Mounted on anti-friction bearings
- 25.83 in (65.6cm) root diameter
- 44.65 in (113.4cm) flange diameter
- 15.63 in (39.7cm) width (right)
- 15.63 in (39.7cm) width (left)
- Grooved for 1.10 in (28mm) wire rope

“W4” Luffing Jib Hoist Drum – Optional

Contains a pilot controlled, bi-directional, axial piston motor and a 3-stage planetary gear reduction unit to provide positive control under all load conditions.

- Spring applied, hydraulically released, disc type brake controlled automatically
- Electronic drum rotation indicators
- Drum pawl controlled automatically
- Mounted on anti-friction bearings
- 24.09 in (61.2cm) root diameter
- 40.16 in (102.0cm) flange diameter
- 39.93 in (101.4cm) width

Boom Hoist System

Designed to lift off maximum boom or maximum boom plus jib and maximum luffing attachment unassisted. Operates up to a maximum boom angle of 83.5°. Boom hoist limit system limits maximum boom angle operation.

- Pin-on bail frame
- 14x2-part reeving with 1.10 in (28mm) wire rope
- Bridle assembly
- 32 ft (9.75m) Live mast
- Hydraulic tubular boom backstops
- Sheaves contain sealed anti-friction bearings

Swing System

Pilot controlled, bi-directional, axial piston motors and planetary gear reduction units to provide positive control under all load conditions.

- Spring applied, hydraulically released, 360° multi-plate brake
- Free swing mode when lever is in neutral position

- Four position positive house lock
- Audio/Visual swing alarm
- Maximum swing speed is 1.7 rpm
- Swing damper

Counterweight/Upper

Consists of a 17-piece design.

- “A” upper counterweight consists of one, 44,080 lb (19 994kg) base slab and four, 22,040 lb (10 000kg) cheek type counterweights
- “B” upper counterweight consists of four, 22,040 lb (10 000kg) cheek type counterweights.
- “C” upper counterweight consists of four, 22,040 lb (10 000kg) cheek type counterweights.
- “D” upper counterweight consists of four, 22,040 lb (10 000kg) cheek type counterweights.

Total combined counterweight is 396,900 lb (180 030kg).

Operator’s Cab

Fully enclosed modular steel compartment is independently mounted and padded to protect against vibration and noise.

- Cab tilts up to 15°
- All tinted/tempered safety glass
- Sliding entry door and front window
- 20,150 BTU (5.9kW) hot water heater
- 18,100 BTU (5.3kW) air conditioner
- Door and window locks
- Sun visor
- Cloth seat
- Defroster
- Windshield wipers and washer
- Dry chemical fire extinguisher
- Engine instrumentation panel (tachometer, voltmeter, engine oil pressure, engine water temperature, fuel level, hydraulic oil temperature, hour meter, and service monitor system)
- Electronic drum rotation indicators for front and rear hoist drums
- Six way adjustable seat
- Foot throttle
- Fully adjustable single axis controls
- Joystick style swing lever and boom hoist
- Boom hoist foot pedal
- Swing brake foot pedal
- Bubble type level
- Ergonomic gauge layout
- Controls shut off lever
- Right hand control stand is adjustable by electric motor for operator comfort.

Rated Capacity Limiter System

The rated capacity limiter system is a boom hoist load cell system. This system provides the operator with useful geometrical data, to include:

- Hook height
- Main boom length
- Main boom angle
- Live mast angle indicator
- Live mast load indicator
- Jib length
- Jib angle
- Operating mode
- Load radius
- Boom tip height
- Audible alarm
- Pre-warning light
- Overload light
- Load on hook
- Function kick-outs including over load
- Operator settable stops (ramped stops)
- Anti-two block indicator
- Boom hoist dead end load cell (no lineriders)

Machinery Cab

Equipped with rooftop access ladder on right and left side and skid resistant finish on roof. Right side house catwalk with handrails.

Upper Frame Jacks – Optional

4 hydraulic jacks that swing out and tilt down using the remote controlled un-decking box.

Lower Structure

Carbody

Lower Frame

All welded high strength steel [100,000 psi (689.48MPa) yield] box construction frame with precision machined surfaces for turntable bearing and rotating joint.

- 31 ft 3 in (9.52m) overall width
- 38 ft 1.7 in (11.63m) overall length

Side Frames

Side Frames

All welded, precision machined. Carbody cross axles positioned by hook & pin system.

- 26 ft 3 in (8.00m) gauge
- 38 ft 1.7 in (11.32m) overall length
- 60 in (1.52m) wide track shoes – standard
- Sealed (oil filled) idler and drive planetaries
- Compact travel drives
- Hydraulic self-adjusting track tension system

Track Rollers

- Fifteen sealed track rollers per side frame
- Four auxiliary (carrier roller) track rollers per side frame

Tracks

Heat treated, self-cleaning, multiple hinged track shoes joined by one-piece full floating pins; 72 shoes per side frame

Take Up Idlers

Cast steel, heat treated, mounted on aluminum/bronze bushings.

- **Track Tension Adjustment** – Adjusted by means of automatic track tension device. Hydraulic cylinder provides proper track tension. Track tension determined by mechanical bolt.

Travel and Steering

Travel and Steering

Each side frame contains a pilot controlled, bi-directional, axial piston motor and a planetary gear reduction unit to provide positive control under all load conditions.

- Individual control provides smooth, precise maneuverability including full counter-rotation.
- Spring applied, hydraulically released disc type brake controlled automatically
- Axial piston motor with reduction gear is located at inner drive end of each side frame. Each track is driven simultaneously or individually for straight-line, gradual turn, or pivot turn.
- Maximum travel speed is 1 mph (1.61km/h).
- Designed to 30% gradeability

Jack System

System contains four hydraulic cylinders individually mounted on swing-out beams.

- Individual jack cylinders are operated by remote control, or can be operated by carbody-mounted controls
- Maximum height of carbody when resting on pontoons is 47.6 in (121cm).

Undecking Device – Optional

Turntable hydraulic pins – 24 hydraulic locking pins activated by a hand held remote control box.

Carbody (Lower) Counterweight

Consists of a 4-piece design

- (2) carbody counterweights, 68,343 lb (31 000kg) each.

Total combined carbody counterweight with hardware is 136,686 lb (62 000kg).

Attachment and Options

Heavy Duty Boom 78.7–315 ft (24.0–96.0m)

Basic Boom

78.7 ft (24.0m) four-piece design that utilizes a 31.2 ft (9.5m) base section, 19.7 ft (6.0m) base extension, 23.0 ft (7.0m) tapered extension, and 4.9 ft (1.5m) top section with in-line connecting pins on 108.3 in (2.75m) wide and 84.7 in (2.15m) deep centers.

- Boom foot on 108.3 in (2.75m) centers
- 0.72 x 0.04 in (219.1 x 12.5mm) diameter tubular chords on heavy duty base section (top)
- 0.72 x 0.05 in (219.1 x 15mm) diameter tubular chords on heavy duty base section (bottom)
- 0.72 x 0.03 in (219.1 x 8.8mm) diameter tubular chords on heavy duty top section (top)
- 0.72 x 0.05 in (219.1 x 15mm) diameter tubular chords on heavy duty top section (bottom)
- 0.55 x 0.03 in (168.3 x 8.8mm) diameter tubular chords on long range top section (bottom)
- 0.72 x 0.04 in (219.1 x 12.5mm) diameter tubular chords on "H" extensions
- 0.72 x 0.03 in (219.1 x 10mm) diameter tubular chords on "HL" extensions
- 0.55 x 0.03 in (168.3 x 8.8mm) diameter tubular chords on "L" extensions
- 0.55 x 0.02 in (168.3 x 7.1mm) diameter tubular chords on "LL" extensions
- Skywalk platform on all heavy duty boom sections.
- Offset head sheaves
- Permanent stands mounted on top section to protect head machinery
- Twenty 22.05 in (0.56m) root diameter steel sheaves mounted on sealed anti-friction bearings
- Tip extension and jib connecting lugs on top section
- Mechanical boom angle indicator

Heavy Duty Boom Extensions

The following table provides the lengths available and the suggested quantity to obtain maximum boom.

Heavy Duty			
Type	ft	m	Qty For Max Boom
H12A	39.4	12.0	1
H12B	39.4	12.0	1
H12C	39.4	12.0	1
HL12B	39.4	12.0	3

- Polyamide wear blocks on top of each extension
- Appropriate length bar pendants stored on extension
- Maximum tip height of 320 ft (97.5m)
- Boom connecting pin storage on each extension

Long Range Boom 137.8–354.3 ft (42.0–108.0m)

Basic Boom

137.8 ft (42.0m) six-piece design that utilizes a 31.2 ft (9.5m) base section, 39.4 ft (12.0m) base extension, 23.0 ft (7.0m) tapered extension, 19.7 ft (6.0m) extension, and a 24.6 ft (7.5m) top section, with in-line connecting pins on 92.5 in (2.35m) wide and 66.9 in (1.70m) deep centers.

- Tip extension and jib connecting lugs on top section
- Long range boom is luffing jib for luffing attachment
- Long range top is used for luffing jib top.
- Twelve 22.05 in (0.56m) root diameter steel sheaves mounted on sealed anti-friction bearings

Long Range Boom Extensions

The following table provides the lengths available and the suggested quantity to obtain maximum boom.

Heavy Duty			
Type	ft	m	Qty For Max Boom
H12A	39.4	12.0	1
H12B	39.4	12.0	1
HL12B	39.4	12.0	2
Long Range			
Type	ft	m	Qty For Max Boom
L12A	39.4	12.0	1
L12B	39.4	12.0	1
LL12A	39.4	12.0	1

- Polyamide wear blocks on top of each extension
- Appropriate length bar pendants stored on extension
- Maximum tip height of 360 ft (109.7m)
- Boom connecting pin storage on each extension

Heavy Duty Boom Auxiliary HD Top Section 25 ft (7.6m)

Maximum capacity is 110 Ton (100mt).

Heavy Duty Boom Auxiliary Tip Extension

Mounts on heavy duty boom top section. Maximum capacity is 67.2 Ton (61mt)

Long Range/Luffer Auxiliary Tip Extension

Mounts on long range/luffer top section. Maximum capacity is 34.2 Ton (31mt)

Options Under Design

- SL–W (Heavy Lift Super Mast & Wagon)

Luffing Boom 98.4–236.2 ft (30.0–72.0m)

- Common base and extensions with heavy duty boom (“H/HL” boom only)
- Working angles of 90°, 85°, 80°, 75°, 70°, and 65°
- Working lengths of 98.4 ft (30.0m) to 236.2 ft (72.0m)
- “W4” becomes luffing jib hoist
- Rear drum provides second load hoist
- Job site mobility with attachment

Luffing Boom Extensions

The following table provides the lengths available and the suggested quantity to obtain the maximum luffing boom.

Luffing Boom Extensions			
Type	ft	m	Qty For Max Luffing Boom
H6A	19.7	6.0	1
H12A	39.4	12.0	1
H12B	39.4	12.0	1
H12C	39.4	12.0	1
HL12B	39.4	12.0	1

Luffing Jib 78.7–238.2 ft (24.0–72.0m)

Basic Luffing Jib

78.7 ft (24.0m) basic luffing jib design utilizes a 14.8 ft (4.5m) luffing jib base section, 19.7 ft (6.0m) of luffing jib extensions, and a 24.6 ft (7.5m) top section.

- Working lengths of 78.7 ft (24.0m) to 238.2 ft (72.0m)
- The maximum boom length of luffing boom + luffing jib [236.2 ft + 236.2 ft (72m + 72m)] is 472.4 ft (144m).

Luffing Jib Extensions

The following table provides the lengths available and the suggested quantity to obtain the maximum luffing jib.

Luffing Jib Extensions			
Type	ft	m	Qty For Max Luffing Jib
L6A	19.7	6.0	1
L6B	19.7	6.0	1
L12A	39.4	12.0	1
L12B	39.4	12.0	1
LL12A	39.4	12.0	2

Note: Long range boom extensions make-up luffing jib.

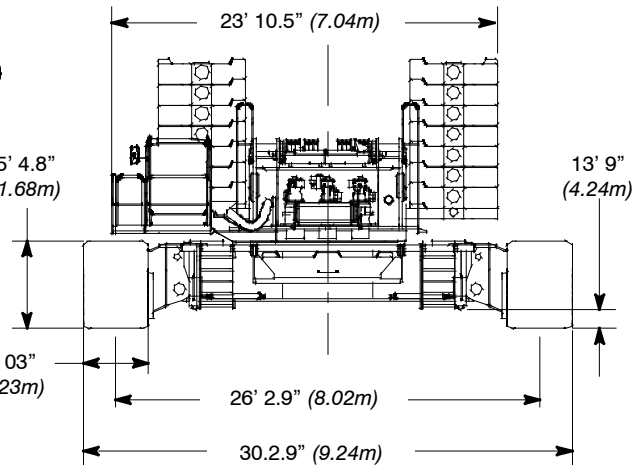
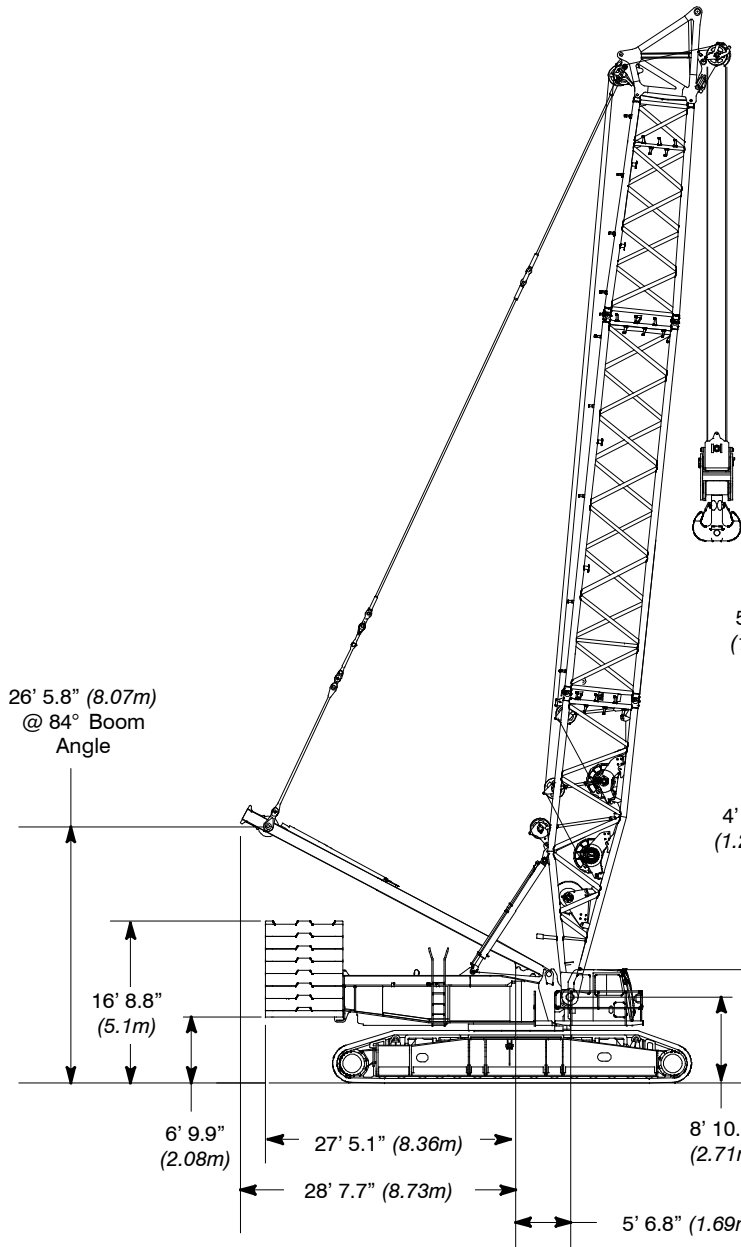
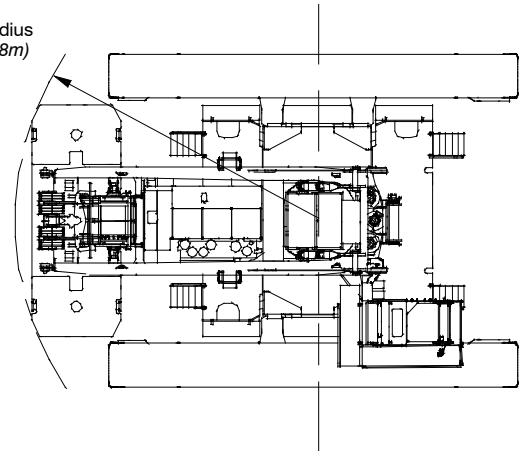
- Polyimide wear blocks on top of each section
- The maximum tip height is 466 ft (142m).

General Dimensions

Heavy Duty Boom

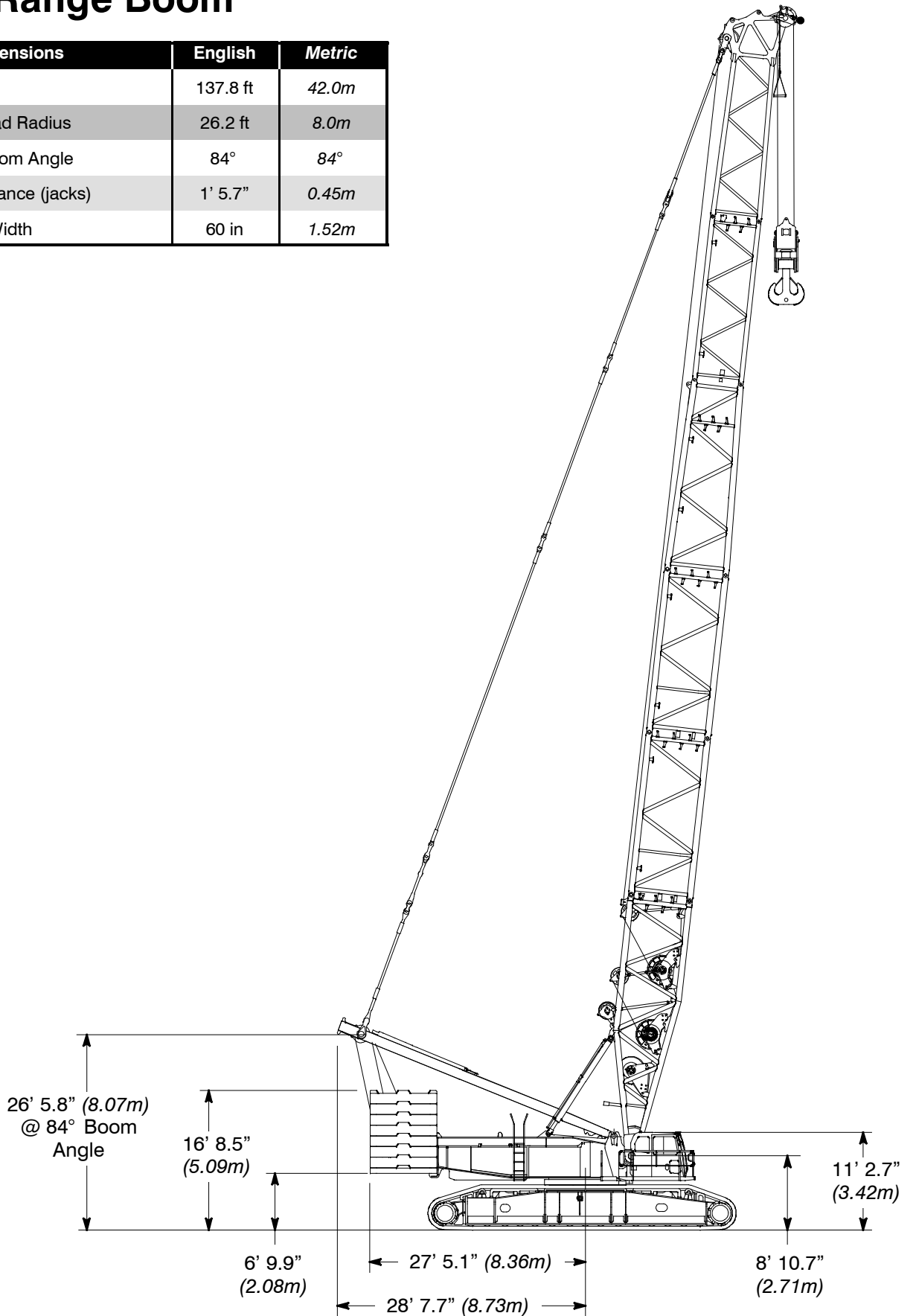
General Dimensions	English	Metric
Basic Boom	78.7 ft	24.0m
Minimum Load Radius	19.7 ft	6.0m
Maximum Boom Angle	84°	84°
Ground clearance (jacks)	1' 5.7"	0.45m
Track Shoe Width	60 in	1.52m

Tailswing Radius
27' 5.2" (8.38m)



Long Range Boom

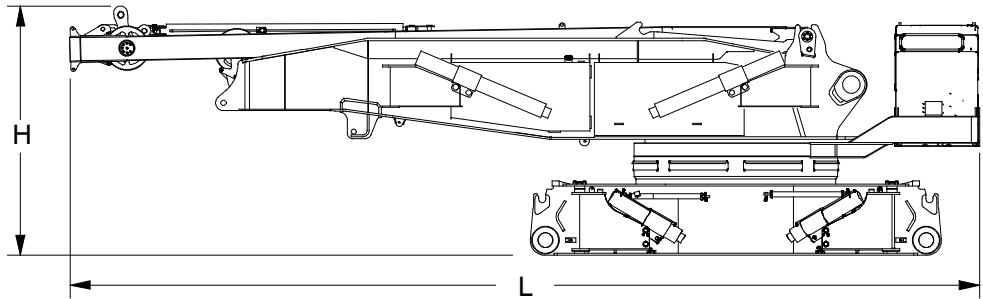
General Dimensions	English	Metric
Basic Boom	137.8 ft	42.0m
Minimum Load Radius	26.2 ft	8.0m
Maximum Boom Angle	84°	84°
Ground clearance (jacks)	1' 5.7"	0.45m
Track Shoe Width	60 in	1.52m



Base Crane

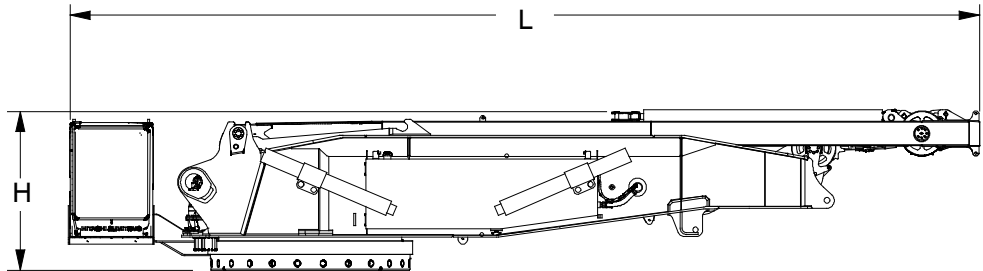
Base Crane ①

Length	46 ft	(14.0m)
Width	11.5 ft	(3.5m)
Height	10.2 ft	(3.1m)
Weight	153,180 lb	(69 482kg)



Base Crane W/O Carbody ①

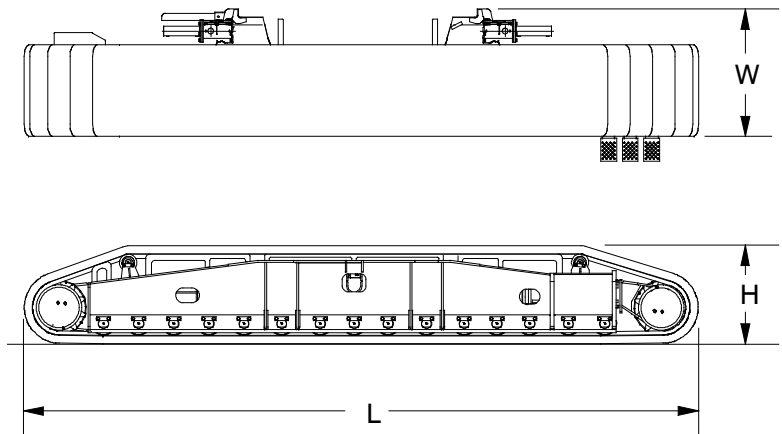
Length	46 ft	(14.0m)
Width	9.8 ft	(3.0m)
Height	7.8 ft	(2.4m)
Weight		
	W/O Undecking Jacks 96,360 lb (43 700kg)	
	W/ Undecking Jacks 105,602 lb (47 900kg)	



Side Frames

With 60 in (1.52m) Track Shoes ②

Length	37.3 ft	(11.37m)
Width	7.2 ft	(2.19m)
Height	5.6 ft	(1.71m)
Weight	88,159 lb	(39 989kg)

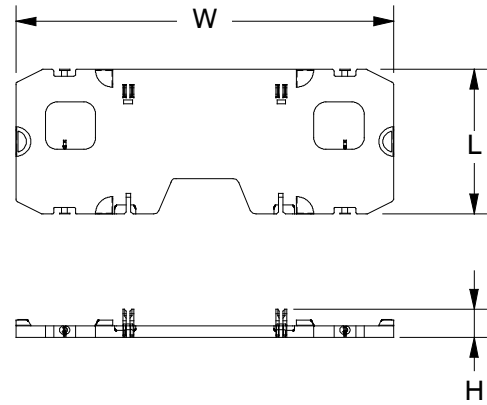


Number inside black circle “①” = # of components

Upper Counterweights

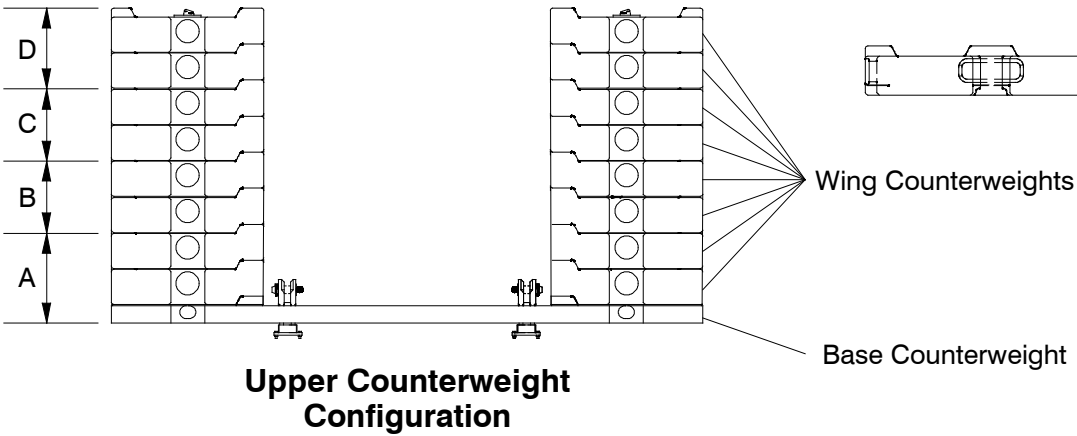
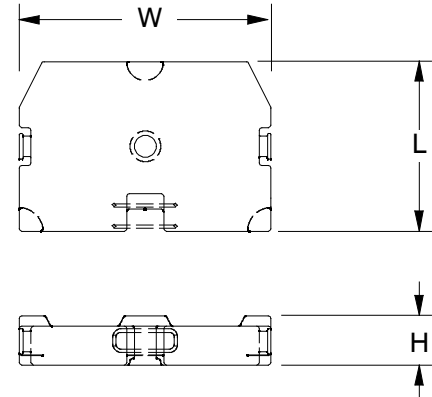
Base Counterweight ①

Length	8.04 ft	(2.45m)
Width	21 ft	(6.40m)
Height	1.54 ft	(0.47m)
Weight	44,100 lb	(20 000kg)



Wing Counterweight ①⑥

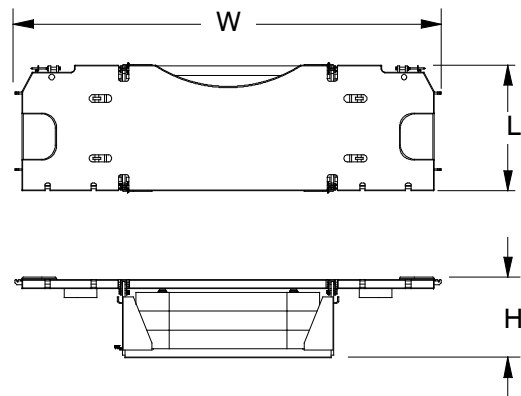
Length	5.41 ft	(1.65m)
Width	8.04 ft	(2.45m)
Height	1.57 ft	(0.48m)
Weight	22,050 lb	(10 000kg)



Lower Counterweights

Carbody Counterweight ②

Length	5.6 ft	(1.7m)
Width	18.7 ft	(5.7m)
Height	3.6 ft	(1.1m)
Weight	68,343 lb	(31 000kg)



Number inside black circle "①" = # of components

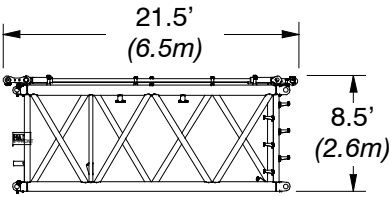
Boom Extensions

Heavy Duty "HD" Extensions

Weights Include Pendants and Hardware

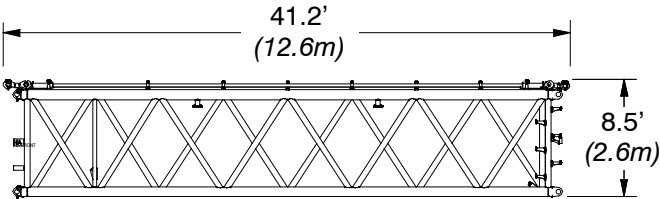
19.7 ft (6.0m) HD Extension – H6A

Weight: 8,160 lb (3 700kg)



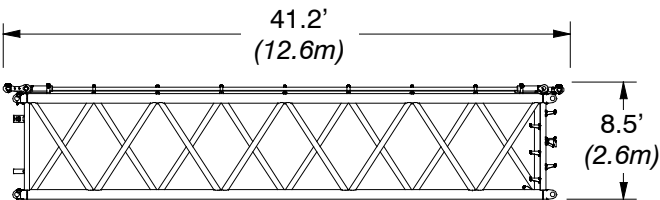
39.4 ft (12.0m) HD Extension – H12A

Weight: 14,110 lb (6 400kg)



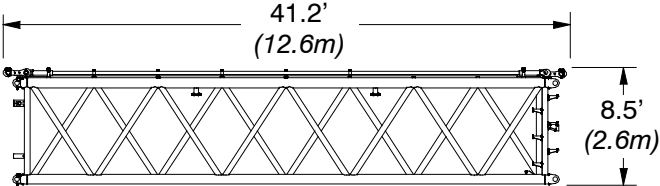
39.4 ft (12.0m) HD Extension – H12B

Weight: 14,110 lb (6 400kg)



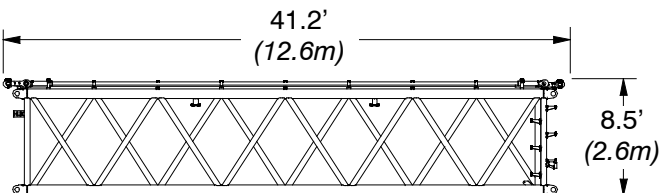
39.4 ft (12.0m) HD Extension – H12C

Weight: 14,110 lb (6 400kg)



39.4 ft (12.0m) HD Extension – HL12B

Weight: 14,110 lb (6 400kg)

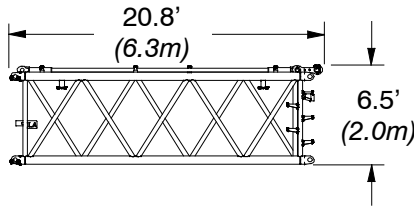


Long Range "LR" Extensions

Weights Include Pendants and Hardware

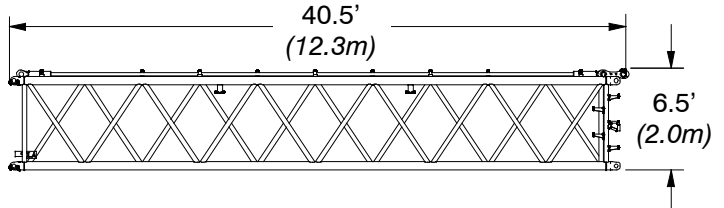
19.7 ft (6.0m) LR Extension – L6A

Weight: 4,630 lb (2 100kg)



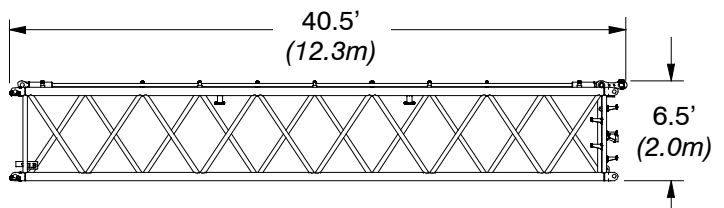
39.4 ft (12.0m) LR Extension – L12A

Weight: 7,897 lb (3 582kg)



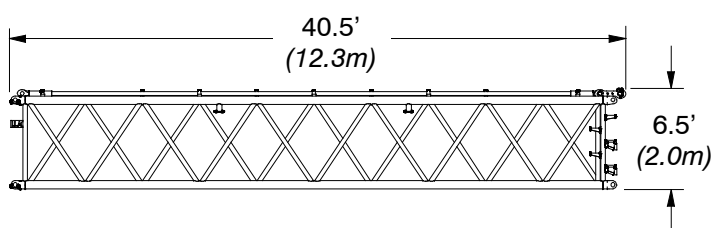
39.4 ft (12.0m) LR Extension – L12B

Weight: 7,897 lb (3 582kg)



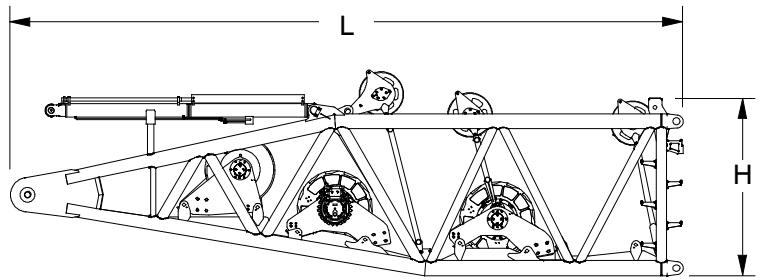
39.4 ft (12.0m) LR Extension – LL12A

Weight: 7,236 lb (3 282kg)



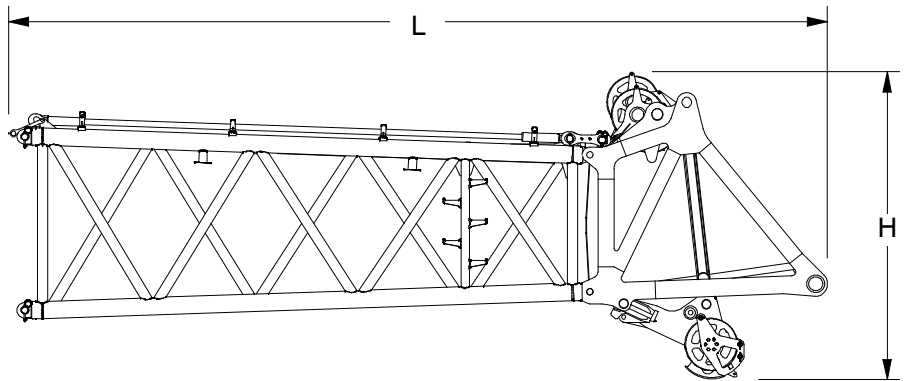
**31.2 ft (9.5m) Heavy Duty/
Long Range Boom Base
Section – HB9.5** ①

Length	32.8 ft	(10.0m)
Width	9.81 ft	(3.0m)
Height	10 ft	(3.1m)
Weight	59,530 lb	(27 000kg)



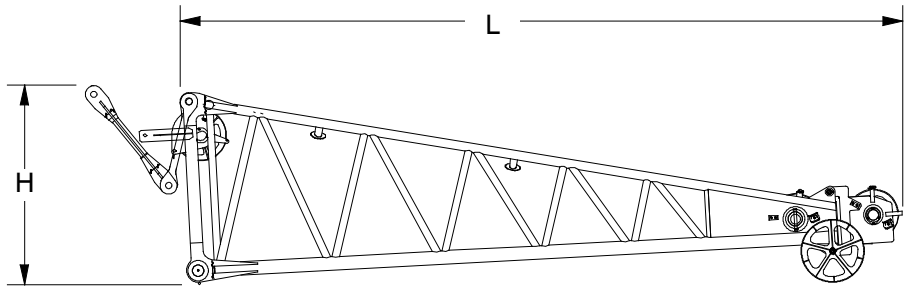
**27.9 ft (8.5m) Heavy Duty Boom
Top Section Assembly –
HR7+HT1.5** ①

Length	34.3 ft	(10.5m)
Width	9.81 ft	(3.0m)
Height	11.53 ft	(3.5m)
Weight	27,560 lb	(12 500kg)



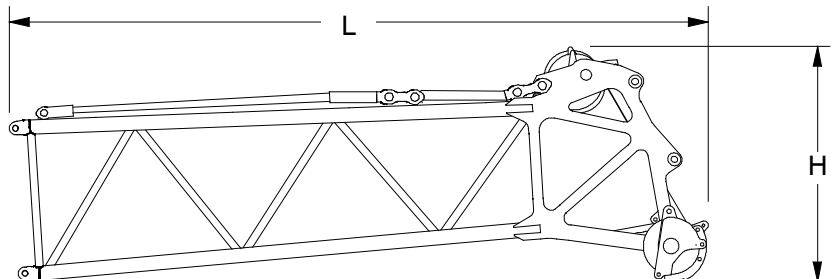
**25 ft (7.6m) Heavy Duty Boom
Auxiliary HD Top Section
Assembly –** ①

Length	25 ft	(7.6m)
Width	8.5 ft	(2.6m)
Height	8.2 ft	(2.5m)
Weight	6,556 lb	(2 974kg)



**24.6 ft (7.5m) Long Range
Boom Top Section – LT7.5** ①

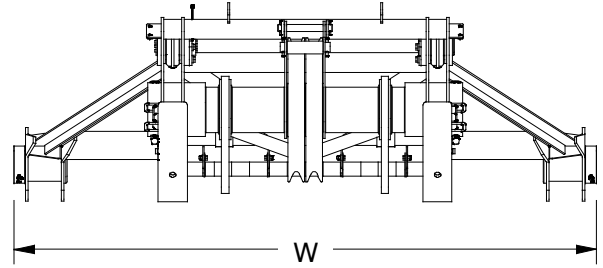
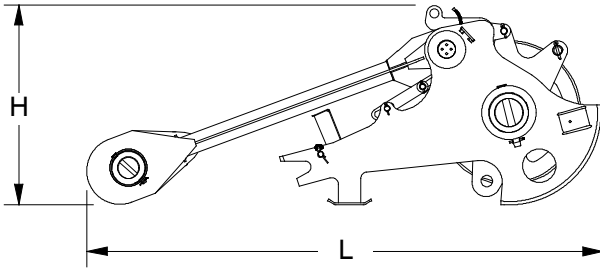
Length	26.6 ft	(8.1m)
Width	8.36 ft	(2.5m)
Height	9.9 ft	(3.0m)
Weight	9,480 lb	(4 300kg)



Number inside black circle “①” = # of components

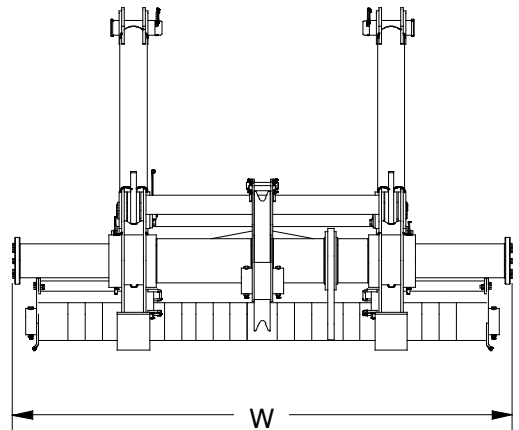
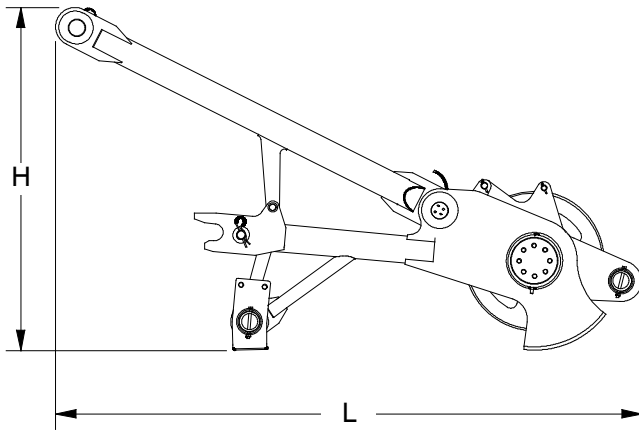
Heavy Duty Boom Auxiliary Tip Extension ①

Length	7.5 ft	(2.3m)
Width	8.5 ft	(2.6m)
Height	3.0 ft	(0.9m)
Weight	1,764 lb	(800kg)



Long Range/Luffer Auxiliary Tip Extension W/ Support Tires ①

Length	8.8 ft	(2.7m)
Width	7.5 ft	(2.3m)
Height	5.25 ft	(1.6m)
Weight	1,764 lb	(800kg)



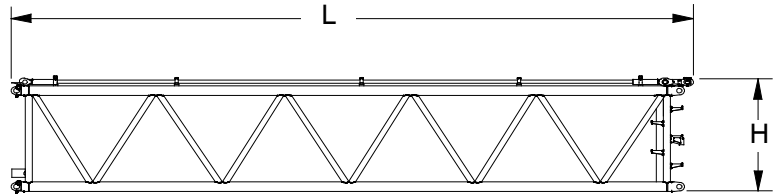
Number inside black circle "①" = # of components

Luffing Jib

39.4 ft (12.0m) Luffing Jib Extensions* – LL12A ①

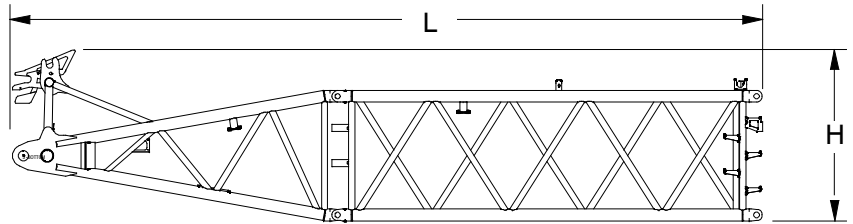
Length	40.5 ft	(12.3m)
Width	8.36 ft	(2.5m)
Height	6.6 ft	(2.0m)
Weight	7,236 lb	(3 282kg)

Weights Include Pendants and Hardware



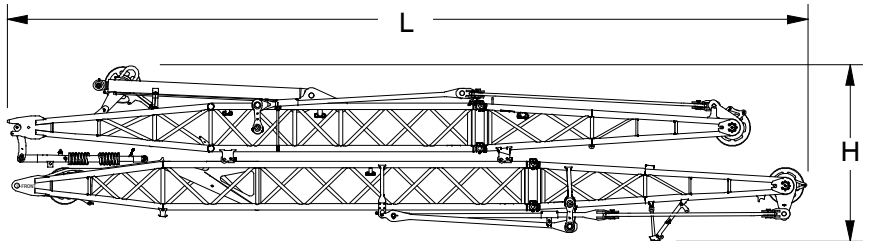
34.5 ft (10.5m) 2-Piece Luffing Jib Base Section* – LB4.5+LB6 ①

Length	34.5 ft	(10.5m)
Width	8.36 ft	(2.5m)
Height	8.2 ft	(2.4m)
Weight	7,717 lb	(3 500kg)



Front & Rear Post ①

Length	46.8 ft	(14.3m)
Width	8.36ft	(2.5m)
Height	10.3ft	(3.1m)
Weight	15,433 lb	(7 000kg)



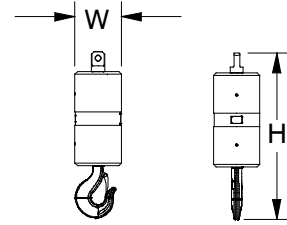
Number inside black circle “①” = # of components

* – Optional equipment

Hook Balls

16.5 Ton (15mt) Non-Swivel Hook Ball* ①

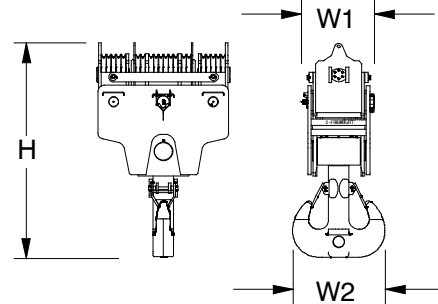
Width	16.5 in	(0.4m)
Height	56.7 in	(1.4m)
Weight	2,205 lb	(1 000kg)



Hook Blocks

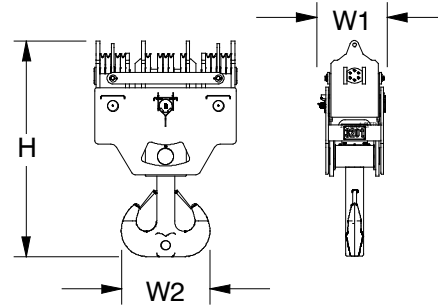
550 Ton (500mt) 18 Sheave Hook Block* ①

Width1	45.9 in	(1.2m)
Width2	59.1 in	(1.5m)
Height	136.8 in	(3.5m)
Weight	27,560 lb	(12 500kg)



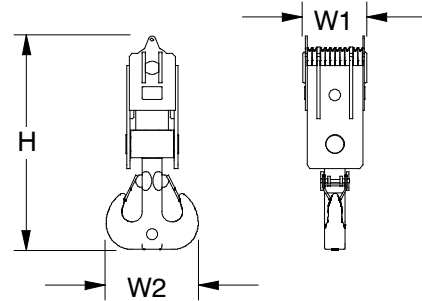
350 Ton (320mt) 13 Sheave Hook Block* ①

Width1	38.0 in	(9.6m)
Width2	51.2 in	(1.3m)
Height	124.6 in	(3.2m)
Weight	17,200 lb	(7 800kg)



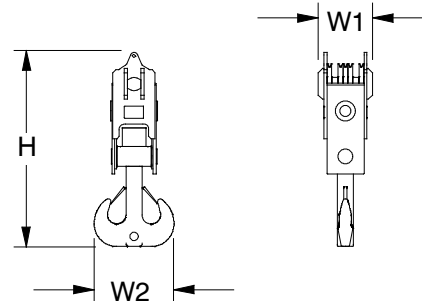
300 Ton (280mt) 8 Sheave Hook Block* ①

Width1	32.9 in	(8.4m)
Width2	59.1 in	(1.5m)
Height	136.8 in	(3.5m)
Weight	15,430 lb	(7 000kg)



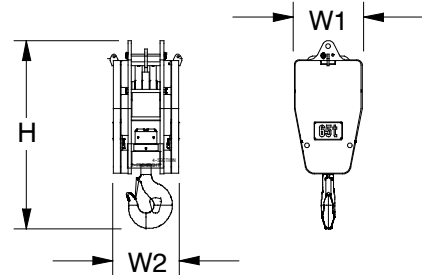
175 Ton (160mt) 5 Sheave Hook Block* ①

Width1	29.9 in	(7.6m)
Width2	51.2 in	(1.3m)
Height	124.6 in	(3.2m)
Weight	8,600 lb	(3 900kg)



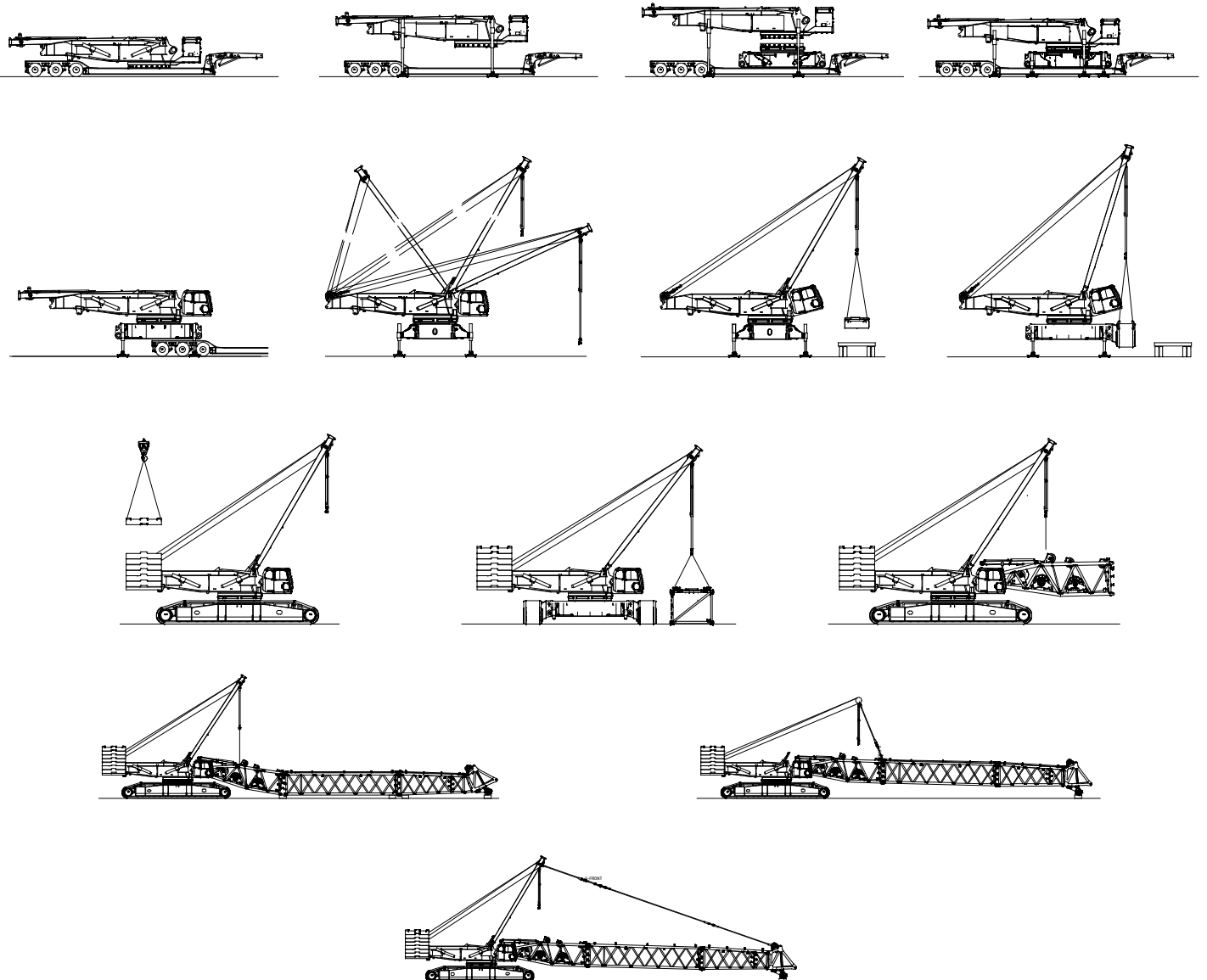
70 Ton (65mt) 2 Sheave Hook Block* ①

Width1	29.9 in	(7.6m)
Width2	31.5 in	(8.0m)
Height	82.7 in	(2.1m)
Weight	6,610 lb	(3 000kg)



Number inside black circle "①" = # of components
 * - Optional equipment

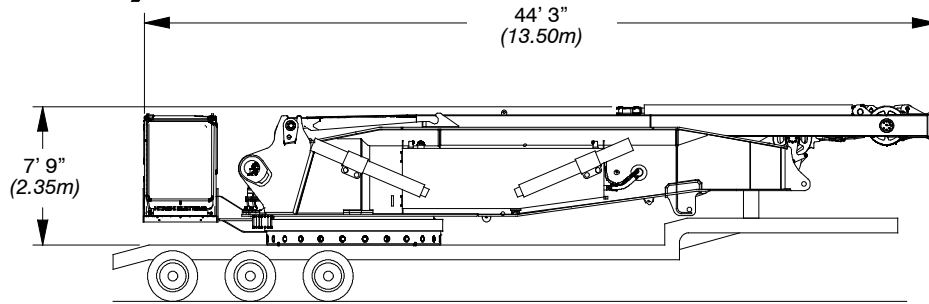
Assembly Diagram (With Undecking Features)



Transport Weights

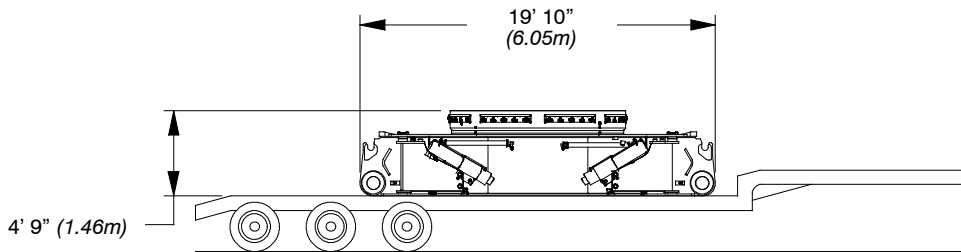
Item Description	Gross Weight		Quantity		Transport Loads																					
	lb	(kg)	Req'd	Incl	1	2	3	4	5	6	7	8	9	10	11	12	13	14	15	16	17	18	19	20	21	22
Upper unit	104,105	47 222	1	1	1																					
Carbody	46,223	20 967	1	1							1															
Side Frame w/ 60" (1.52m) Shoes	88,159	39 989	1	1		1																				
Side Frame w/ 60" (1.52m) Shoes	88,159	39 989	1	1			1																			
Upper Cwt Base	44,100	20 000	1	1								1														
Wing Weight	22,050	10 000	16	16									1	1	1	1	1	1	1	1	1		2	2	2	
Lower Cwt	49,610	22 500	2	2					1	1																
31.2' (9.5m) Boom Base Section – HB9.5	59,530	27 000	1	1			1																			
19.7' (6.0m) Heavy Duty Ext – H6A	8,160	3 700	1	1															1							
39.4' (12.0m) Heavy Duty Ext – H12A	14,110	6 400	1	1																1						
39.4' (12.0m) Heavy Duty Ext – H12B	14,110	6 400	1	1													1									
39.4' (12.0m) Heavy Duty Ext – H12C	14,110	6 400	1	1								1														
39.4' (12.0m) Heavy Duty Ext – HL12B	12,875	5 840	3	3									1	1	1											
27.9' (8.5m) Heavy Duty Top Section – HR7+HT1.5	27,560	12 500	1	1																			1			
19.7' (6.0m) Long Range Ext – L6A	4,630	2 100	1	1													1									
39.4' (12.0m) Long Range Ext – L12A	7,897	3 582	1	1									1													
39.4' (12.0m) Long Range Ext – L12B	7,897	3 582	1	1										1												
39.4' (12.0m) Long Range Ext – LL12A	7,236	3 282	1	1											1											
24.6' (7.5m) Long Range Top Section – LT7.5	9,480	4 300	1	1																	1					
34.5' (10.5m) Luffing Jib Base Section – LB4.5+LB6	7,717	3 500	1	1																		1				
39.4' (12.0m) Long Range Ext – LL12A	7,236	3 282	1	1												1										
Front & Rear Post	15,433	7 000	1	1														1								
Heavy Duty Tip Extension	1,764	800	1	1															1							
Long Range Tip Extension	4,410	2 000	1	1															1							
Wind Top	6,000	2 720	1	1																1						
550 ton (500mt) 18 Sheave Dual Split Hook Block	27,560	12 500	1	0																						
300 ton (280mt) 8 Sheave Hook Block	15,430	7 000	1	0																						
350 ton (320mt) 13 Sheave Dual Split Hook Block	17,200	7 800	1	1																			1			
175 ton (160mt) 5 Sheave Hook Block	8,600	3 900	1	0																						
70 ton (65mt) 2 Sheave Hook Block	6,610	3 000	1	1																			1			
16.5 ton (15mt) Hook Ball	2,205	1 000	1	1																			1			
Approximate Total Shipping Weight				lb (kg)	104,105 (47 222)	88,159 (39 989)	88,159 (39 989)	81,580 (37 026)	71,660 (32 505)	71,660 (32 505)	68,273 (30 969)	44,100 (20 004)	44,037 (19 984)	42,822 (19 424)	42,161 (19 124)	42,161 (19 124)	40,790 (18 582)	37,483 (17 022)	36,384 (16 504)	42,160 (19 124)	31,530 (14 302)	36,582 (17 561)	44,760 (20 383)	44,080 (20 000)	44,080 (20 000)	44,080 (20 000)

Transport Drawings (With Undecking Features)



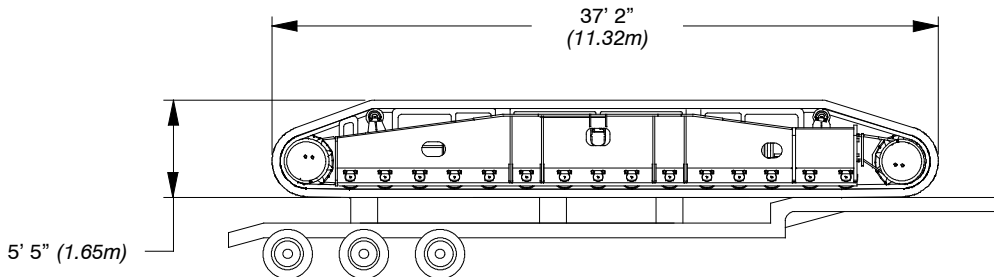
Upper On Trailer

96,360 (43 700kg) – Without Undecking Jacks
 104,105 lb (47 222kg) – With Undecking Jacks



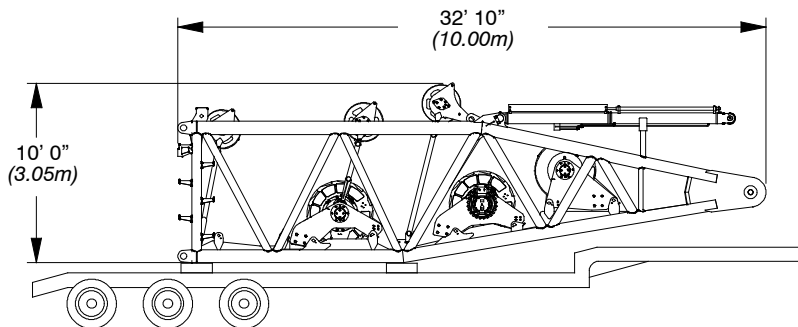
Carbody On Trailer

46,223 lb (20 967kg)



Side Frame On Trailer

88,159 lb (39 989kg) – With 60" Shoes



Boom Base On Trailer

40,000 lb (18 144kg) – Without Wire Rope
 59,530 lb (27 000kg) – With Wire Rope

Load Hoist Performance

“W1” Front Drum & “W2” Rear Drum – 28mm Wire Rope

Rope Layer	Maximum Line Pull		No Load Line Speed		Full Load Line Speed		Pitch Diameter		Layer		Total	
	lb	kg	ft/min	m/min	ft/min	m/min	in	mm	ft	m	ft	m
1	53,571	24 300	400	122.0	182	55.6	24.6	624	270.1	82.3	270.1	82.3
2	49,769	22 575	431	131.4	192	58.5	26.8	680	290.8	88.6	560.9	171.0
3	46,472	21 079	462	140.7	198	60.3	29.0	736	311.4	94.9	872.3	265.9
4	43,584	19 770	492	150.0	203	61.9	31.2	792	332.0	101.2	1,204.3	367.1
5	41,034	18 613	523	159.3	207	63.0	33.4	848	352.7	107.5	1,557.0	474.6
6	38,766	17 584	553	168.7	209	63.7	35.6	904	373.3	113.8	1,930.3	588.3
7	36,735	16 663	584	178.0	202	61.6	37.8	960	393.9	120.1	2,324.2	708.4
8	34,907	15 834	615	187.3	185	56.4	40.0	1 016	414.6	126.4	2,738.7	834.8

“W3” Boom Hoist Drum – 28mm Wire Rope

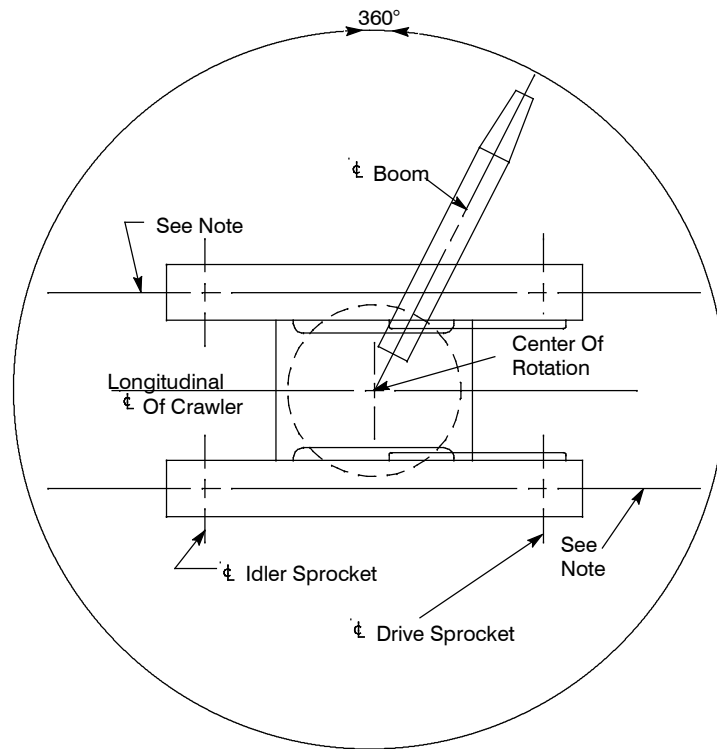
Rope Layer	Maximum Line Pull		No Load Line Speed		Full Load Line Speed		Pitch Diameter		Layer		Total	
	lb	kg	ft/min	m/min	ft/min	m/min	in	mm	ft	m	ft	m
1	59,745	27 100	135	41.3	78	23.9	26.9	684	91.7	27.9	91.7	27.9
2	55,853	25 335	145	44.1	80	24.5	29.1	740	98.0	29.9	189.7	57.8
3	52,438	23 786	154	47.0	82	25.1	31.3	796	104.4	31.8	294.1	89.6
4	49,415	22 415	164	49.9	83	25.4	33.5	852	110.8	33.8	404.9	123.4
5	46,723	21 193	173	52.8	84	25.6	35.7	908	117.2	35.7	522.1	159.1
6	44,308	20 098	183	55.7	84	25.6	38.0	964	123.6	37.7	645.7	196.8
7	42,131	19 111	192	58.5	--	--	40.2	1 020	130.0	39.6	775.7	236.4
8	40,158	18 216	201	61.4	--	--	42.4	1 076	136.4	41.6	912.0	278.0

“W4” Luffing Jib Hoist Drum – 28mm Wire Rope

Rope Layer	Maximum Line Pull		No Load Line Speed		Full Load Line Speed		Pitch Diameter		Layer		Total	
	lb	kg	ft/min	m/min	ft/min	m/min	in	mm	ft	m	ft	m
1	54,694	24 809	150	45.7	90	27.3	25.2	640	224.3	68.4	224.3	68.4
2	50,903	23 090	161	49.1	96	29.2	27.4	696	241.0	73.5	465.3	141.8
3	47,604	21 593	172	52.5	102	31.1	29.6	752	257.7	78.5	723.0	220.4
4	44,706	20 279	184	55.9	108	32.8	31.8	808	274.4	83.6	997.3	304.0
5	42,141	19 115	195	59.3	--	--	34.0	864	291.1	88.7	1,288.4	392.7
6	39,854	18 078	206	62.8	--	--	36.2	920	307.8	93.8	1,596.2	486.5
7	37,803	17 147	217	66.2	--	--	38.4	976	324.5	98.9	1,920.7	585.4
8	35,952	16 308	228	69.6	--	--	40.6	1 032	341.2	104.0	2,261.9	689.4

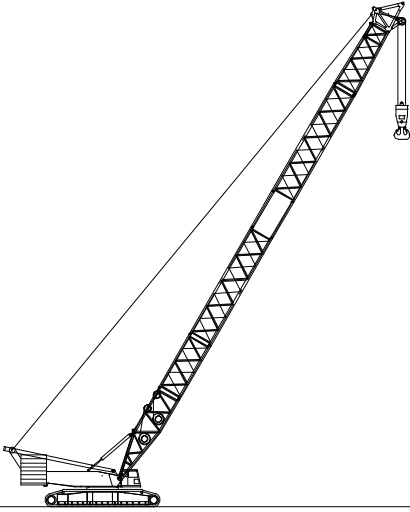
Wire Rope Application	Diameter	Max. Permissible Load		Wire Rope Descriptions
	mm	lb	kg	
“W1” Front Hoist	28	34,620	15 703	P· S(19) + 39xP· 7, right regular lay
“W2” Rear Hoist	28	34,620	15 703	P· S(19) + 39xP· 7, right regular lay
“W3” Boom Hoist	28	43,190	19 590	IWRC 8 x P – WS(26), right regular lay & left regular lay
“W4” Luffing Jib Hoist	28	43,190	19 590	IWRC 8 x P – WS(26), right regular lay

Working Areas

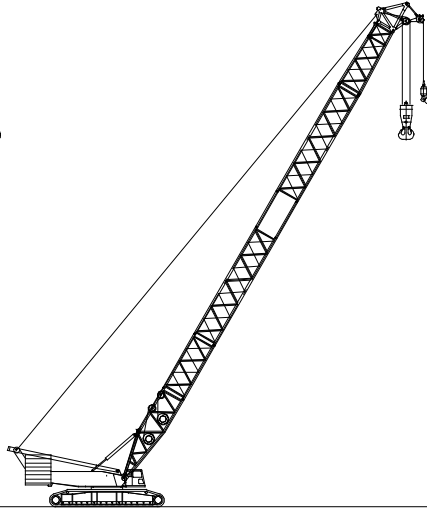


Note: These Lines Determine The Limiting Position Of Any Load For Operation Within Working Areas Indicated.

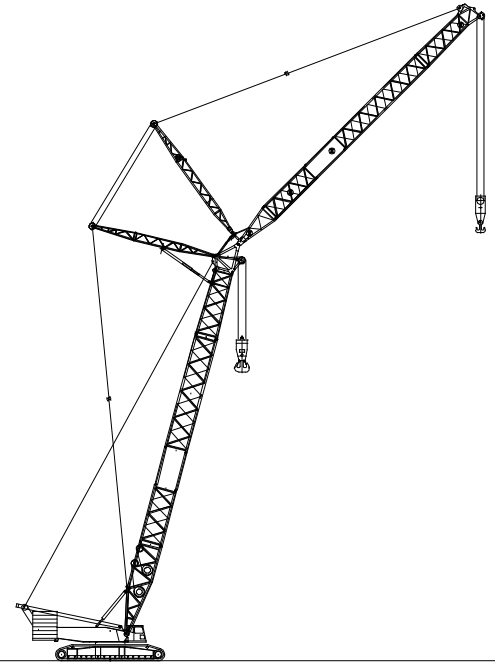
Attachments



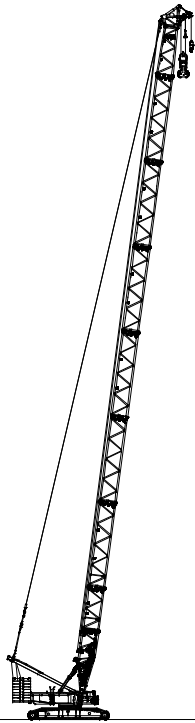
**78.7–315.0 ft
(24.0–96.0m)
Standard Heavy
Duty Boom**



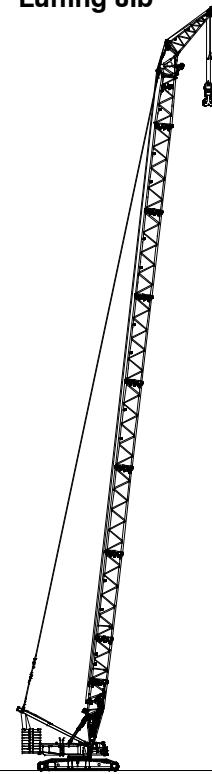
**137.8–354.3 ft
(42.0–108.0m)
Standard Long
Range Boom**



**98.4–236.2 ft (30.0–72.0m)
Heavy Duty Luffing Boom +
78.7–236.2 (24.0–72.0m)
Luffing Jib**

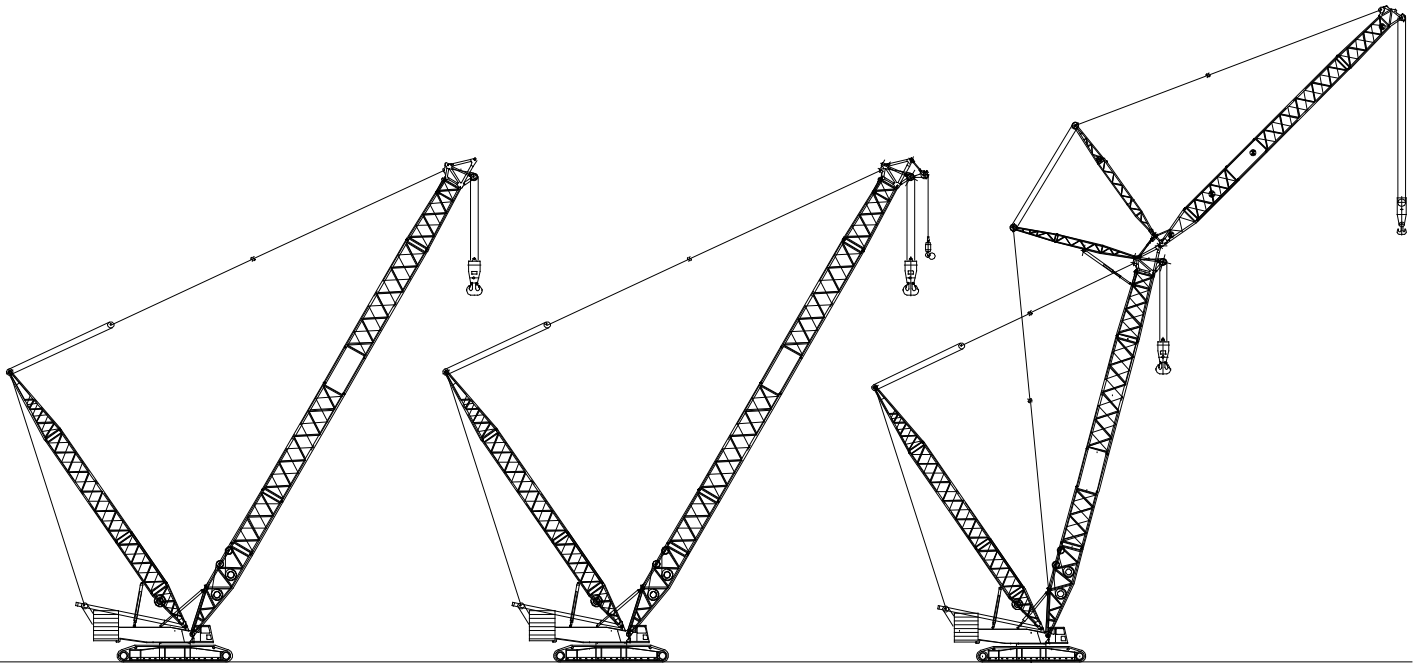


**78.7–315.0 ft (24.0–96.0m)
Heavy Duty Boom With Auxiliary
Tip Extension**



**216.5–315.0 ft (66.0–96.0m)
Heavy Duty Boom With HD
Auxiliary Tip Extension**

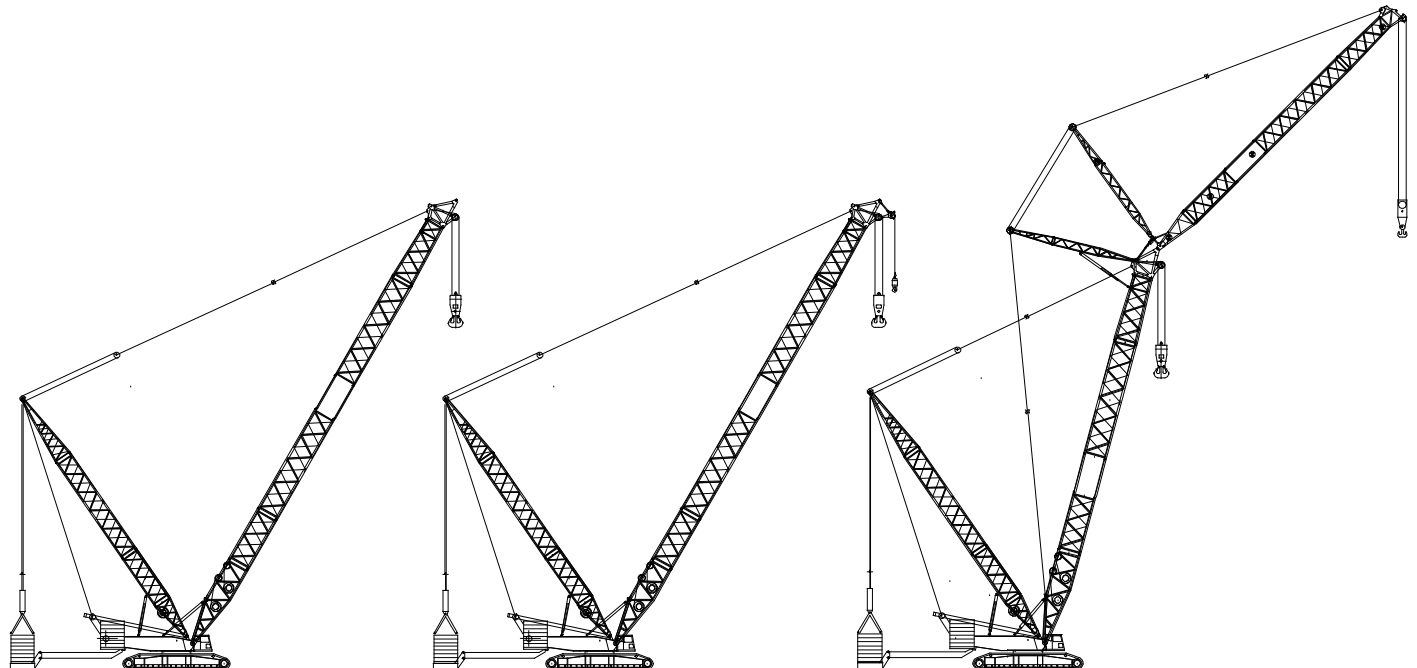
Super Lift Attachment Options



SL-N Heavy Duty
118.1-315 ft (36.0-96.0m)

SL-N Long Range
225.9-354.3 ft (78.0-108.0m)

SL-N Luffer
118.1-236.2 ft (36.0-72.0m)
Luffing Boom
78.7-236.2 ft (24.0-72.0m)
Luffing Jib



SL-T Heavy Duty
118.1-315 ft (36.0-96.0m)

SL-T Long Range
225.9-413.4 ft (78.0-126.0m)

SL-T Luffer
118.1-275.6 ft (36.0-84.0m)
Luffing Boom
78.1-275.6 ft (24.0-84.0m)
Luffing Jib

Heavy Duty Boom

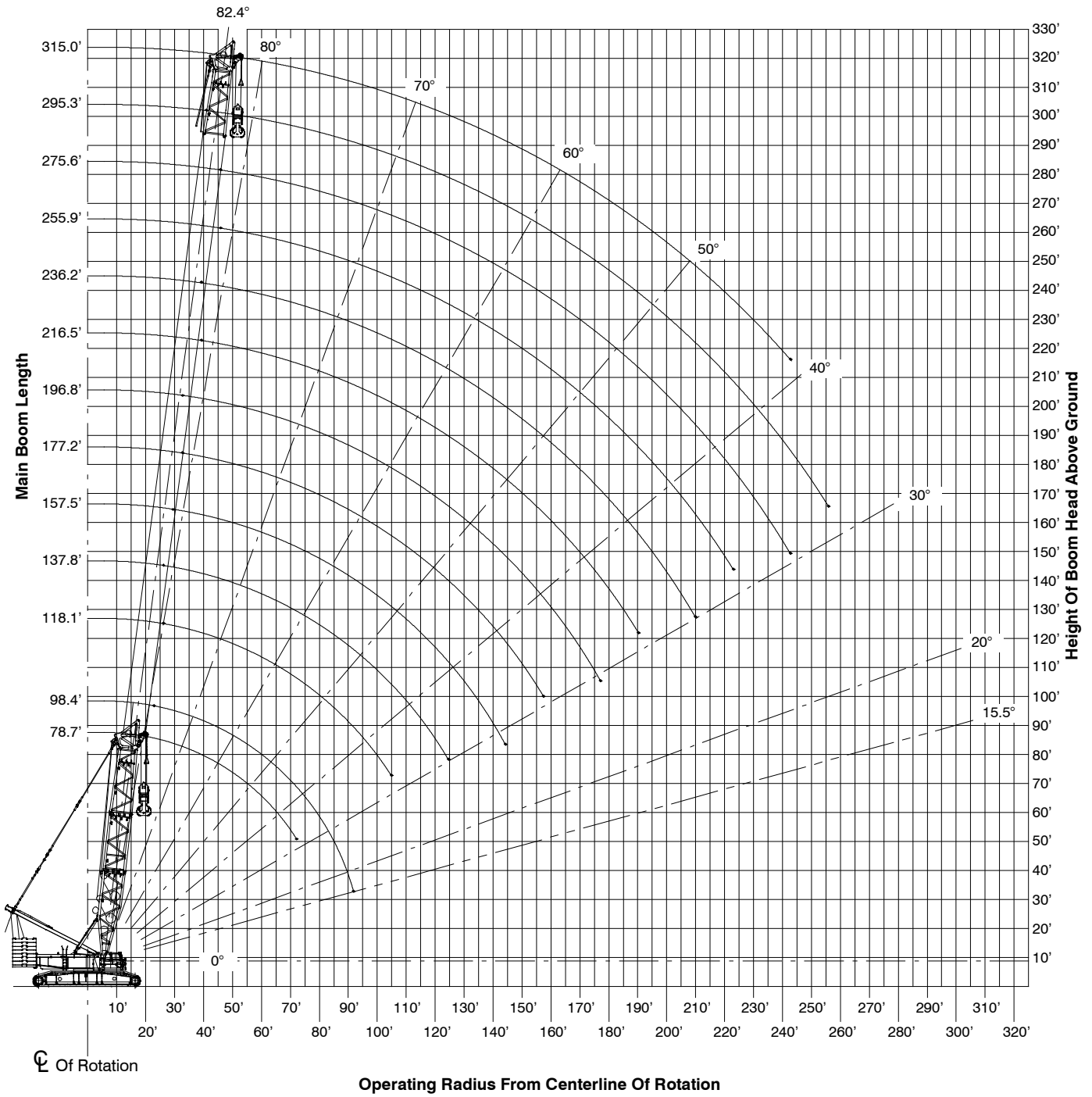
Boom Make-Up

Boom Length ft (m)	Boom Extensions – ft (m)							
	Base	HD Extensions				HD Light Ext	Tapered Ext	HD Top
	HB9.5 31.2 (9.5)	H6A 19.7 (6.0)	H12A 39.4 (12.0)	H12B 39.4 (12.0)	H12C 39.4 (12.0)	HL12B 39.4 (12.0)	HR7 23.0 (7.0)	HT1.5 4.9 (1.5)
78.7 (24.0)	1	1					1	1
98.4 (30.0)	1		1				1	1
118.1 (36.0)	1	1	1				1	1
137.8 (42.0)	1		1	1			1	1
157.5 (48.0)	1	1	1	1			1	1
177.2 (54.0)	1		1	1	1		1	1
196.9 (60.0)	1	1	1	1	1		1	1
216.5 (66.0)	1		1	1	1	1	1	1
236.2 (72.0)	1	1	1	1	1	1	1	1
255.9 (78.0)	1		1	1	1	2	1	1
275.6 (84.0)	1	1	1	1	1	2	1	1
295.3 (90.0)	1		1	1	1	3	1	1
315.0 (96.0)	1	1	1	1	1	3	1	1

Notes:

- Capacities shown are in kips/metric tons (1 kip = 1,000 lb / 1 metric ton = 0.45 kips) and are not more than 75% of the tipping loads with the crane standing level on firm supporting surface. A deduction must be made from these capacities for weight of hook block, hook ball, sling, grapple, load weighing device, etc. When using main hook while jib or tip extension is attached, reduce capacities by values shown in Crane Rating Manual. See Operator's Manual for all limitations when raising or lowering attachment.
- The capacities in the shaded areas are based on structural strength. The capacities in the non-shaded areas are based on stability ratings.
- For recommended reeving, parts of line, wire rope type, and wire rope inspection, see Wire Rope Capacity Chart, Operator's Manual, and Parts Manual.
- Load ratings are based on freely suspended loads and make no allowances for such factors as the effect of the wind, ground conditions, and operating speeds. The operator shall therefore reduce load ratings in order to take these conditions into account. Refer to the Crane Rating Manual for Wind Speed Restrictions.
- The least stable rated condition is over the side.
- Booms must be erected and lowered over the end for maximum stability.
- Main boom length must not exceed 315.0 ft (96.0m).
- Do not operate at radii and boom lengths where the Crane Rating Manual lists no capacity. Do not use longer booms or jibs than those listed in the Crane Rating Manual. Any of the above can cause a tipping condition, or boom and jib failure.
- These capacities are in compliance with ASME/ANSI B30.5 at date of manufacture.
- These capacities apply only to the crane as originally manufactured and normally equipped by Link-Belt Construction Equipment Company.

Working Range Diagram – 360°



Notes:

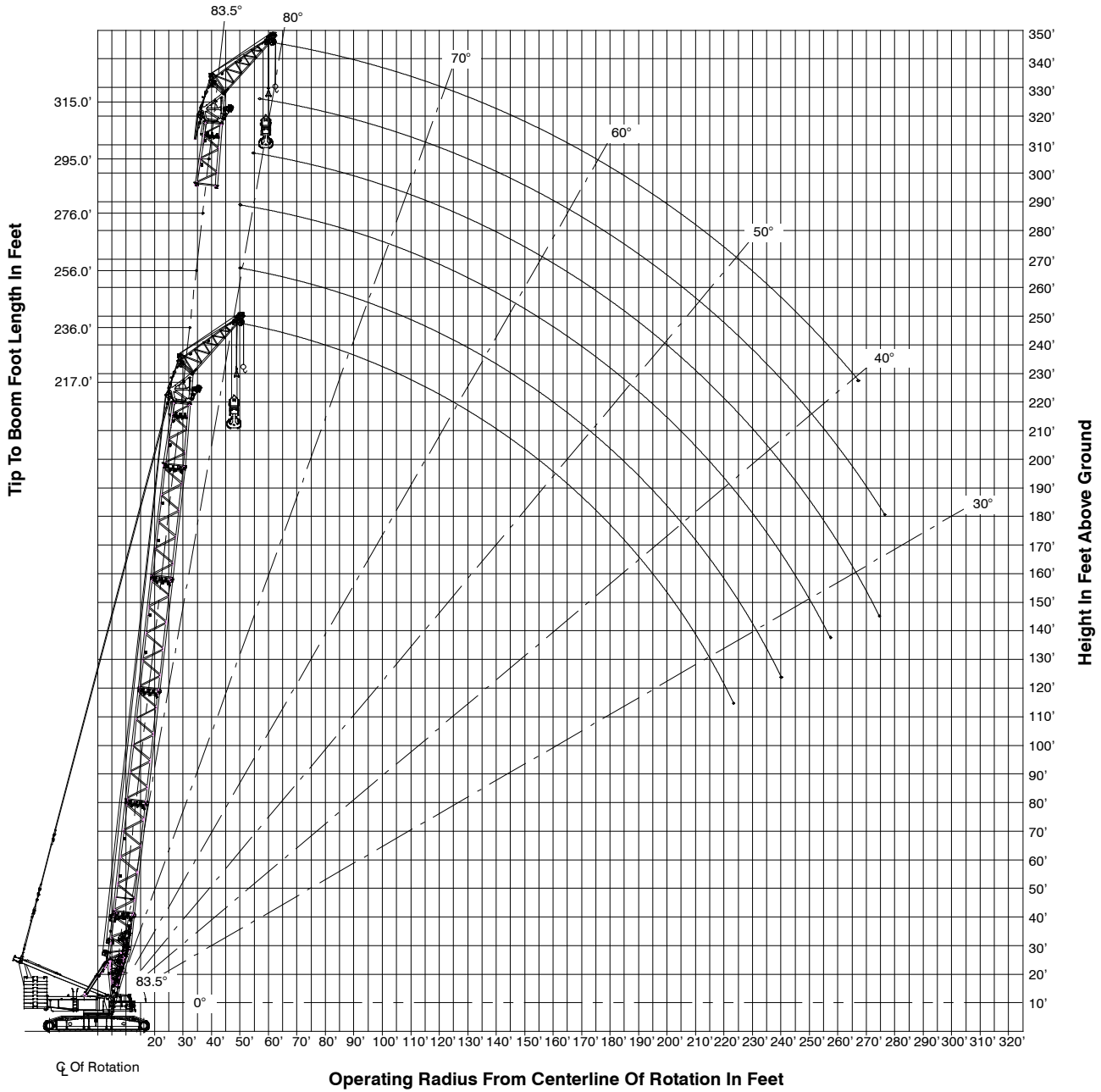
1. Boom geometry shown is for unloaded condition and crane standing level on firm supporting surface. Boom deflection, subsequent radius, and boom angle change must be accounted for when applying load to hook.

Load Chart

Heavy Duty Boom With Heavy Duty Top – 360° Rotation ABCD+AB [396,900 lb + 136,686 lb (180mt + 62 mt)] Counterweight [All capacities are listed in kips (mt)]														
Load Radius ft (m)	Boom Length ft (m)													Load Radius ft (m)
	78.7 (24.0)	98.4 (30.0)	118.1 (36.0)	137.8 (42.0)	157.5 (48.0)	177.2 (54.0)	196.8 (60.0)	216.5 (66.0)	236.2 (72.0)	255.9 (78.0)	275.6 (84.0)	295.3 (90.0)	315.0 (96.0)	
20 (6.1)	1,092.4 (495.5)													20 (6.1)
25 (7.6)	912.3 (413.8)	913.9 (414.5)	912.5 (413.9)											25 (7.6)
30 (9.1)	748.9 (339.7)	749.5 (340.0)	749.7 (340.1)	750.0 (340.2)	750.4 (340.4)									30 (9.1)
40 (12.2)	538.7 (244.4)	547.6 (248.4)	538.7 (244.4)	538.2 (244.1)	538.1 (244.1)	536.9 (243.5)	536.0 (243.1)	481.8 (218.5)	474.8 (215.4)	389.9 (176.9)				40 (12.2)
50 (15.2)	376.6 (170.8)	378.6 (171.7)	378.0 (171.5)	371.1 (168.3)	370.7 (168.1)	372.7 (169.1)	373.4 (169.4)	374.8 (170.0)	371.7 (168.6)	358.9 (162.8)	312.9 (141.9)	256.8 (116.5)	217.6 (98.7)	50 (15.2)
60 (18.3)	287.6 (130.5)	288.7 (131.0)	287.6 (130.5)	286.2 (129.8)	285.3 (129.4)	284.0 (128.8)	282.1 (128.0)	283.1 (128.4)	280.4 (127.2)	282.3 (128.0)	281.4 (127.6)	244.9 (111.1)	206.9 (93.8)	60 (18.3)
70 (21.3)	203.8 (92.4)	230.9 (104.7)	229.5 (104.1)	228.2 (103.5)	226.9 (102.9)	225.4 (102.2)	224.6 (101.9)	224.6 (101.9)	223.2 (100.6)	223.2 (101.2)	222.2 (100.8)	220.4 (100.0)	197.1 (89.4)	70 (21.3)
80 (24.4)		190.3 (86.3)	189.3 (85.9)	187.4 (85.0)	186.1 (84.4)	184.6 (83.7)	183.0 (83.0)	183.0 (83.0)	180.3 (81.8)	181.4 (82.3)	180.3 (81.8)	180.5 (81.9)	179.2 (81.3)	80 (24.4)
90 (27.4)		146.9 (66.6)	159.5 (72.3)	157.7 (71.5)	156.4 (70.9)	154.7 (70.2)	152.9 (69.4)	152.7 (69.3)	150.1 (68.1)	151.0 (68.5)	149.7 (67.9)	149.5 (67.8)	148.4 (67.3)	90 (27.4)
100 (30.5)			137.1 (62.2)	135.2 (61.3)	133.4 (60.5)	131.6 (59.7)	129.6 (58.8)	129.4 (58.7)	126.7 (57.5)	127.5 (57.8)	126.2 (57.2)	126.0 (57.2)	124.6 (56.5)	100 (30.5)
110 (33.5)			108.6 (49.3)	117.4 (53.3)	115.4 (52.3)	113.4 (51.4)	111.3 (50.5)	111.1 (50.4)	108.4 (49.2)	108.9 (49.4)	107.5 (48.8)	107.2 (48.6)	105.8 (48.0)	110 (33.5)
120 (36.6)				103.0 (46.7)	100.7 (45.7)	98.7 (44.8)	96.5 (43.8)	96.2 (43.6)	93.4 (42.4)	94.0 (42.6)	92.5 (42.0)	92.0 (41.7)	90.7 (41.1)	120 (36.6)
130 (39.6)					88.8 (40.3)	86.7 (39.3)	84.5 (38.3)	83.9 (38.1)	81.2 (36.8)	81.4 (36.9)	79.9 (36.2)	79.4 (36.0)	77.9 (35.3)	130 (39.6)
140 (42.7)					78.6 (35.7)	76.7 (34.8)	74.2 (33.7)	73.6 (33.4)	70.8 (32.1)	71.1 (32.3)	69.5 (31.5)	68.9 (31.3)	67.5 (30.6)	140 (42.7)
150 (45.7)						68.2 (30.9)	65.5 (29.7)	64.9 (29.4)	62.0 (28.1)	62.2 (28.2)	60.5 (27.4)	59.8 (27.1)	58.3 (26.4)	150 (45.7)
160 (48.8)						61.0 (27.7)	58.3 (26.4)	57.3 (26.0)	54.6 (24.8)	54.6 (24.8)	52.8 (23.9)	52.1 (23.6)	50.6 (23.0)	160 (48.8)
170 (51.8)							52.1 (23.6)	51.0 (23.1)	48.2 (21.9)	48.0 (21.8)	46.2 (21.0)	45.5 (20.6)	43.8 (19.9)	170 (51.8)
180 (54.9)								45.4 (20.6)	42.5 (19.3)	42.2 (19.1)	40.4 (18.3)	39.7 (18.0)	37.9 (17.2)	180 (54.9)
190 (57.9)								40.4 (18.3)	37.6 (17.1)	37.1 (16.8)	35.1 (15.9)	34.3 (15.6)	32.5 (14.7)	190 (57.9)
200 (61.0)									33.1 (15.0)	32.5 (14.7)	30.6 (13.9)	29.7 (13.5)	27.9 (12.7)	200 (61.0)
210 (64.0)									29.3 (13.3)	28.6 (13.0)	26.6 (12.1)	25.5 (11.6)	23.7 (10.8)	210 (64.0)
220 (67.1)										25.0 (11.3)	22.9 (10.4)	21.7 (9.8)	20.0 (9.1)	220 (67.1)
230 (70.1)											19.7 (8.9)	18.4 (8.3)	16.6 (7.5)	230 (70.1)
240 (73.2)											16.7 (7.6)	15.2 (6.9)	13.4 (6.1)	240 (73.2)
250 (76.2)												12.4 (5.6)		250 (76.2)

This material is supplied for reference use only. Operator must refer to in-cab Crane Rating Manual and Operator's Manual to determine allowable crane lifting capacities and assembly and operating procedures.

Working Range Diagram – 217’–315’ HD Main Boom With HD Auxiliary Tip Ext.



Notes:

1. Boom geometry shown is for unloaded condition and crane standing level on firm supporting surface. Boom deflection, subsequent radius, and boom angle change must be accounted for when applying load to hook.
2. Maximum and minimum boom angles are equal to the values listed in the capacity chart for each boom length.

Load Chart

Heavy Duty Boom With Heavy Duty Auxiliary Tip Extension – 360° Rotation ABCD+AB [396,900 lb + 136,686 lb (180mt + 62mt)] Counterweight [All capacities are listed in kips (mt)]							
Load Radius ft (m)	Boom Length ft (m)						Load Radius ft (m)
	216.5 (66.0)	236.2 (72.0)	255.9 (78.0)	275.6 (84.0)	295.3 (90.0)	315.0 (96.0)	
50 (15.2)	220.4 (100.0)						50 (15.2)
60 (18.3)	220.4 (100.0)	220.4 (100.0)	220.4 (100.0)	220.4 (100.0)	216.0 (98.0)	182.8 (82.9)	60 (18.3)
70 (21.3)	220.4 (100.0)	220.4 (100.0)	220.4 (100.0)	220.4 (100.0)	208.3 (94.5)	167.6 (76.0)	70 (21.3)
80 (24.4)	196.9 (89.3)	195.6 (88.7)	194.0 (88.0)	193.1 (87.6)	186.5 (84.6)	148.1 (67.2)	80 (24.4)
90 (27.4)	165.5 (75.1)	164.2 (74.5)	162.5 (73.7)	161.4 (73.2)	160.0 (72.6)	131.7 (59.7)	90 (27.4)
100 (30.5)	141.3 (64.1)	140.0 (63.5)	138.0 (62.6)	139.9 (63.5)	135.6 (61.5)	117.7 (53.4)	100 (30.5)
110 (33.5)	122.4 (55.5)	120.8 (54.8)	118.9 (53.9)	117.6 (53.3)	116.1 (52.7)	105.8 (48.0)	110 (33.5)
120 (36.6)	106.9 (48.5)	105.2 (47.7)	103.2 (46.8)	102.1 (46.3)	100.5 (45.6)	95.3 (43.2)	120 (36.6)
130 (39.6)	94.0 (42.6)	92.3 (41.9)	90.3 (41.0)	89.0 (40.4)	87.4 (39.6)	85.4 (38.7)	130 (39.6)
140 (42.7)	83.3 (37.8)	81.6 (37.0)	79.4 (36.0)	78.2 (35.5)	76.5 (34.7)	74.7 (33.9)	140 (42.7)
150 (45.7)	74.0 (33.6)	72.2 (32.7)	70.2 (31.8)	68.9 (31.3)	67.1 (30.4)	65.3 (29.6)	150 (45.7)
160 (48.8)	66.2 (30.0)	64.3 (29.2)	62.2 (28.2)	60.9 (27.6)	59.2 (26.9)	57.2 (25.9)	160 (48.8)
170 (51.8)	59.2 (26.9)	57.5 (26.1)	55.2 (25.0)	53.9 (24.4)	52.0 (23.6)	50.2 (22.8)	170 (51.8)
180 (54.9)	53.2 (24.1)	51.2 (23.2)	49.0 (22.2)	47.7 (21.6)	46.0 (20.9)	44.0 (20.0)	180 (54.9)
190 (57.9)	47.7 (21.6)	46.0 (20.9)	43.5 (19.7)	42.2 (19.1)	40.4 (18.3)	38.5 (17.5)	190 (57.9)
200 (61.0)	43.0 (19.5)	41.1 (18.6)	38.8 (17.6)	37.5 (17.0)	35.6 (16.1)	33.6 (15.2)	200 (61.0)
210 (64.0)	38.7 (17.6)	36.8 (16.7)	34.6 (15.7)	33.0 (15.0)	31.2 (14.2)	29.3 (13.3)	210 (64.0)
220 (67.1)	34.8 (15.8)	32.8 (14.9)	30.6 (13.9)	29.1 (13.2)	27.3 (12.4)	25.3 (11.5)	220 (67.1)
230 (70.1)		29.4 (13.3)	27.0 (12.2)	25.6 (11.6)	23.7 (10.8)	21.7 (9.8)	230 (70.1)
240 (73.2)		26.1 (11.8)	23.9 (10.8)	22.4 (10.2)	20.5 (9.3)	18.5 (8.4)	240 (73.2)
250 (76.2)			20.9 (9.5)	19.4 (8.8)	17.6 (8.0)	15.6 (7.1)	250 (76.2)
260 (79.2)				16.8 (7.6)	14.9 (6.8)	12.7 (5.8)	260 (79.2)
270 (82.3)				16.8 (7.6)	12.3 (5.6)		270 (82.3)

This material is supplied for reference use only. Operator must refer to in-cab Crane Rating Manual and Operator's Manual to determine allowable crane lifting capacities and assembly and operating procedures.

Long Range Boom

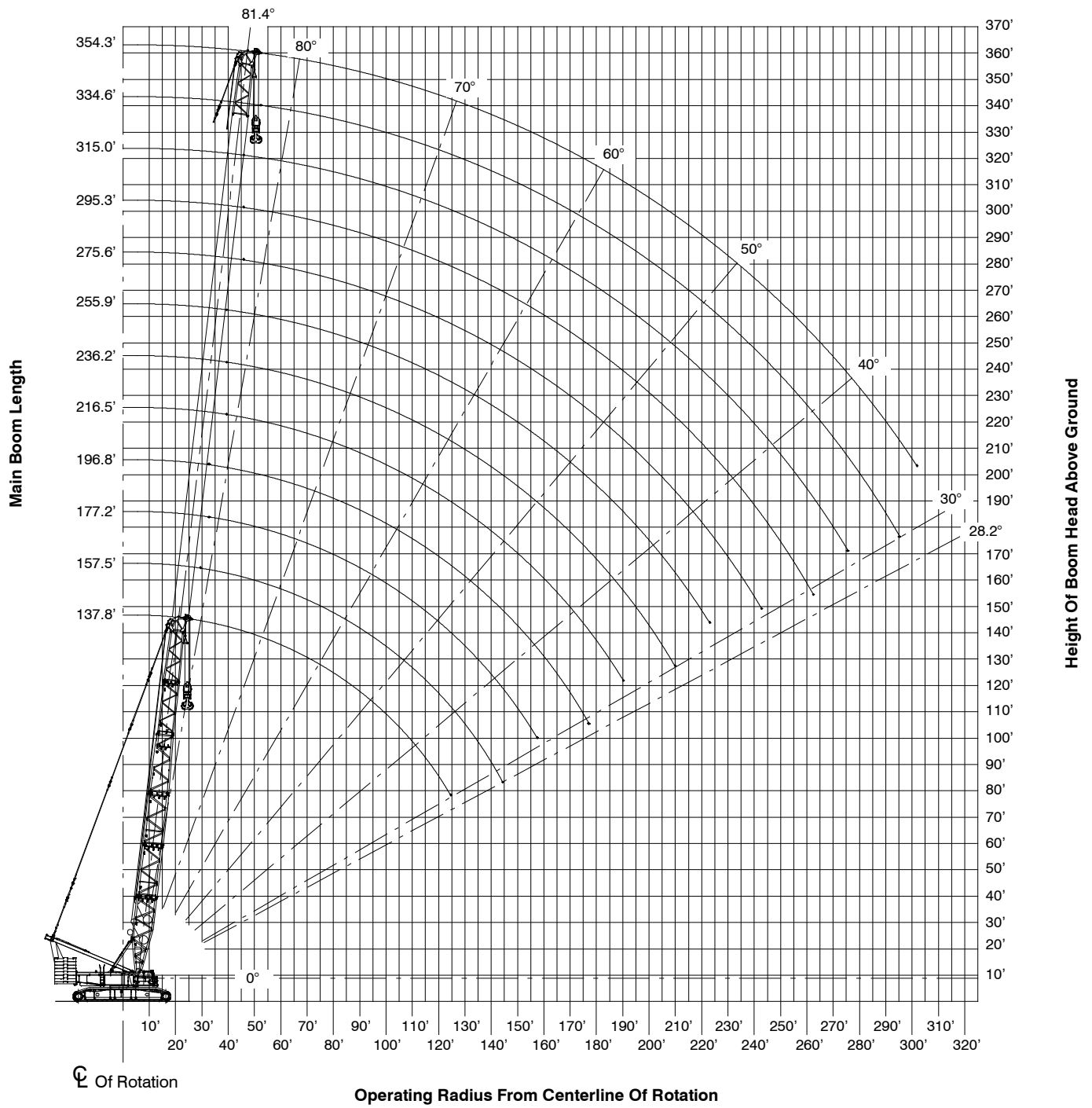
Boom Make-Up

Boom Length ft (m)	Boom Extensions – ft (m)											
	Base	HD Extensions				HD Light Ext	Tapered Ext	LR Extensions			LR Light Ext	LR Top
	HB9.5 31.2 (9.5)	H6A 19.7 (6.0)	H12A 39.4 (12.0)	H12B 39.4 (12.0)	HL12B 39.4 (12.0)	HR7 23.0 (7.0)	L6A 19.7 (6.0)	L12A 39.4 (12.0)	L12B 39.4 (12.0)	LL12A 39.4 (12.0)	LT7.5 24.6 (7.5)	
137.8 (42.0)	1		1				1	1			1	
157.5 (48.0)	1	1	1				1	1			1	
177.2 (54.0)	1	1	1				1		1		1	
196.9 (60.0)	1		1		1	1		1			1	
216.5 (66.0)	1		1		1	1	1	1			1	
236.2 (72.0)	1	1	1		1	1	1	1			1	
255.9 (78.0)	1	1	1		1	1		1	1		1	
275.6 (84.0)	1		1		2	1		1	1		1	
295.3 (90.0)	1		1		2	1	1	1		1	1	
315.0 (96.0)	1	1	1		2	1	1	1		1	1	
334.6 (102.0)	1	1	1		2	1		1	1	1	1	
354.3 (108.0)	1		1	1	2	1		1	1	1	1	

Notes:

- Capacities shown are in kips/metric tons (1 kip = 1,000 lb / 1 metric ton = 0.45 kips) and are not more than 75% of the tipping loads with the crane standing level on firm supporting surface. A deduction must be made from these capacities for weight of hook block, hook ball, sling, grapple, load weighing device, etc. When using main hook while jib or tip extension is attached, reduce capacities by values shown in Crane Rating Manual. See Operator's Manual for all limitations when raising or lowering attachment.
- The capacities in the shaded areas are based on structural strength. The capacities in the non-shaded areas are based on stability ratings.
- For recommended reeving, parts of line, wire rope type, and wire rope inspection, see Wire Rope Capacity Chart, Operator's Manual, and Parts Manual.
- Load ratings are based on freely suspended loads and make no allowances for such factors as the effect of the wind, ground conditions, and operating speeds. The operator shall therefore reduce load ratings in order to take these conditions into account. Refer to the Crane Rating Manual for Wind Speed Restrictions.
- The least stable rated condition is over the side.
- Booms must be erected and lowered over the end for maximum stability.
- Main boom length must not exceed 354.3 ft (108.0m).
- Do not operate at radii and boom lengths where the Crane Rating Manual lists no capacity. Do not use longer booms or jibs than those listed in the Crane Rating Manual. Any of the above can cause a tipping condition, or boom and jib failure.
- These capacities are in compliance with ASME/ANSI B30.5 at date of manufacture.
- These capacities apply only to the crane as originally manufactured and normally equipped by Link-Belt Construction Equipment Company.

Working Range Diagram – 360°



Notes:

1. Boom geometry shown is for unloaded condition and crane standing level on firm supporting surface. Boom deflection, subsequent radius, and boom angle change must be accounted for when applying load to hook.

Load Chart

Heavy Duty Boom With Long Range Top – 360° Rotation ABCD+AB [396,900 lb + 136,686 lb (180mt + 62 mt)] Counterweight [All capacities are listed in kips (mt)]													
Load Radius ft (m)	Boom Length ft (m)												Load Radius ft (m)
	137.8 (42.0)	157.5 (48.0)	177.2 (54.0)	196.8 (60.0)	216.5 (66.0)	236.2 (72.0)	255.9 (78.0)	275.6 (84.0)	295.3 (90.0)	315.0 (96.0)	334.6 (102.0)	354.3 (108.0)	
30 (9.1)	551.1 (250.0)	551.1 (250.0)	551.1 (250.0)										30 (9.1)
35 (10.7)	551.1 (250.0)	551.1 (250.0)	526.7 (238.9)	480.4 (217.9)	417.9 (189.6)								35 (10.7)
40 (12.2)	539.8 (244.8)	539.7 (244.8)	472.2 (214.2)	431.4 (195.7)	410.4 (186.2)	370.0 (167.8)	308.0 (139.7)						40 (12.2)
50 (15.2)	389.8 (176.8)	388.3 (176.1)	381.4 (173.0)	354.0 (160.6)	374.9 (170.1)	354.8 (160.9)	294.8 (133.7)	247.8 (112.4)	198.5 (90.0)	176.3 (80.0)	143.8 (65.2)	127.7 (57.9)	50 (15.2)
60 (18.3)	299.0 (135.6)	297.2 (134.8)	297.0 (134.7)	293.9 (133.3)	295.0 (133.8)	293.9 (133.3)	278.7 (126.4)	237.1 (107.5)	189.6 (86.0)	167.6 (76.0)	136.4 (61.9)	120.9 (54.8)	60 (18.3)
70 (21.3)	240.7 (109.2)	238.9 (108.4)	238.4 (108.1)	237.6 (107.8)	236.4 (107.2)	235.6 (106.9)	236.3 (107.2)	226.4 (102.7)	181.2 (82.2)	159.9 (72.5)	129.7 (58.8)	114.6 (52.0)	70 (21.3)
80 (24.4)	200.3 (90.9)	198.2 (89.9)	197.6 (89.6)	196.9 (89.3)	195.8 (88.8)	194.2 (88.1)	194.7 (88.3)	193.3 (87.7)	172.9 (78.4)	152.6 (69.2)	123.6 (56.1)	108.6 (49.3)	80 (24.4)
90 (27.4)	170.4 (77.3)	168.3 (76.3)	167.9 (76.2)	166.8 (75.7)	165.5 (75.1)	164.0 (74.4)	164.4 (74.6)	162.9 (73.9)	159.6 (72.4)	145.8 (66.1)	117.9 (53.5)	103.4 (46.9)	90 (27.4)
100 (30.5)	147.7 (67.0)	145.3 (65.9)	144.8 (65.7)	143.7 (65.2)	142.4 (64.6)	140.8 (63.9)	141.0 (64.0)	139.5 (63.3)	139.5 (63.3)	137.5 (62.4)	112.5 (51.0)	98.2 (44.5)	100 (30.5)
110 (33.5)	129.4 (58.7)	127.3 (57.7)	126.5 (57.4)	125.3 (56.8)	124.1 (56.3)	122.5 (55.6)	122.5 (55.6)	121.0 (54.9)	121.0 (54.9)	119.2 (54.1)	107.4 (48.7)	93.5 (42.4)	110 (33.5)
120 (36.6)	114.9 (52.1)	112.6 (51.1)	111.9 (50.8)	110.6 (50.2)	109.2 (49.5)	107.5 (48.8)	107.7 (48.9)	106.2 (48.2)	105.9 (48.0)	104.1 (47.2)	101.9 (46.2)	89.1 (40.4)	120 (36.6)
130 (39.6)		100.6 (45.6)	99.7 (45.2)	98.4 (44.6)	97.0 (44.0)	95.3 (43.2)	95.3 (43.2)	93.8 (42.5)	93.3 (42.3)	91.6 (41.5)	91.3 (41.4)	85.1 (38.6)	130 (39.6)
140 (42.7)		90.5 (41.1)	89.7 (40.7)	88.1 (40.0)	86.8 (39.4)	85.0 (38.6)	85.0 (38.6)	83.4 (37.8)	83.0 (37.6)	81.2 (36.8)	80.8 (36.7)	79.2 (35.9)	140 (42.7)
150 (45.7)			81.0 (36.7)	79.4 (36.0)	78.1 (35.4)	76.1 (34.5)	76.1 (34.5)	74.6 (33.8)	74.1 (33.6)	72.2 (32.7)	71.9 (32.6)	70.5 (32.0)	150 (45.7)
160 (48.8)			73.7 (33.4)	72.1 (32.7)	70.6 (32.0)	68.7 (31.2)	68.5 (31.1)	67.0 (30.4)	66.5 (30.2)	64.5 (29.3)	64.1 (29.1)	62.5 (28.3)	160 (48.8)
170 (51.8)				65.6 (29.8)	64.0 (29.0)	62.1 (28.2)	61.8 (28.0)	60.3 (27.4)	59.7 (27.1)	57.9 (26.3)	57.4 (26.0)	55.9 (25.4)	170 (51.8)
180 (54.9)					58.5 (26.5)	56.4 (25.6)	56.2 (25.5)	54.4 (24.7)	53.9 (24.4)	52.0 (23.6)	51.6 (23.4)	49.9 (22.6)	180 (54.9)
190 (57.9)					53.7 (24.4)	51.5 (23.4)	51.0 (23.1)	49.3 (22.4)	48.6 (22.0)	46.8 (21.2)	46.2 (21.0)	44.6 (20.2)	190 (57.9)
200 (61.0)						47.0 (21.3)	46.4 (21.0)	44.7 (20.3)	44.2 (20.0)	42.2 (19.1)	41.6 (18.9)	40.0 (18.1)	200 (61.0)
210 (64.0)						42.9 (19.5)	42.5 (19.3)	40.7 (18.5)	40.1 (18.2)	38.1 (17.3)	37.4 (17.0)	35.9 (16.3)	210 (64.0)
220 (67.1)							38.9 (17.6)	37.0 (16.8)	36.3 (16.5)	34.3 (15.6)	33.7 (15.3)	32.0 (14.5)	220 (67.1)
230 (70.1)								33.8 (15.3)	32.9 (14.9)	30.9 (14.0)	30.3 (13.7)	28.5 (12.9)	230 (70.1)
240 (73.2)								30.8 (14.0)	29.9 (13.6)	27.9 (12.7)	27.2 (12.3)	25.5 (11.6)	240 (73.2)
250 (76.2)									27.1 (12.3)	25.1 (11.4)	24.5 (11.1)	22.7 (10.3)	250 (76.2)
260 (79.2)									24.8 (11.2)	22.6 (10.3)	21.8 (9.9)	20.0 (9.1)	260 (79.2)
270 (82.3)										20.3 (9.2)	19.6 (8.9)	17.6 (8.0)	270 (82.3)
280 (85.3)											17.4 (7.9)	15.4 (7.0)	280 (85.3)
290 (88.4)											15.3 (6.9)	13.4 (6.1)	290 (88.4)
300 (91.4)												11.6 (5.3)	300 (91.4)

This material is supplied for reference use only. Operator must refer to in-cab Crane Rating Manual and Operator's Manual to determine allowable crane lifting capacities and assembly and operating procedures.

Luffing Attachment

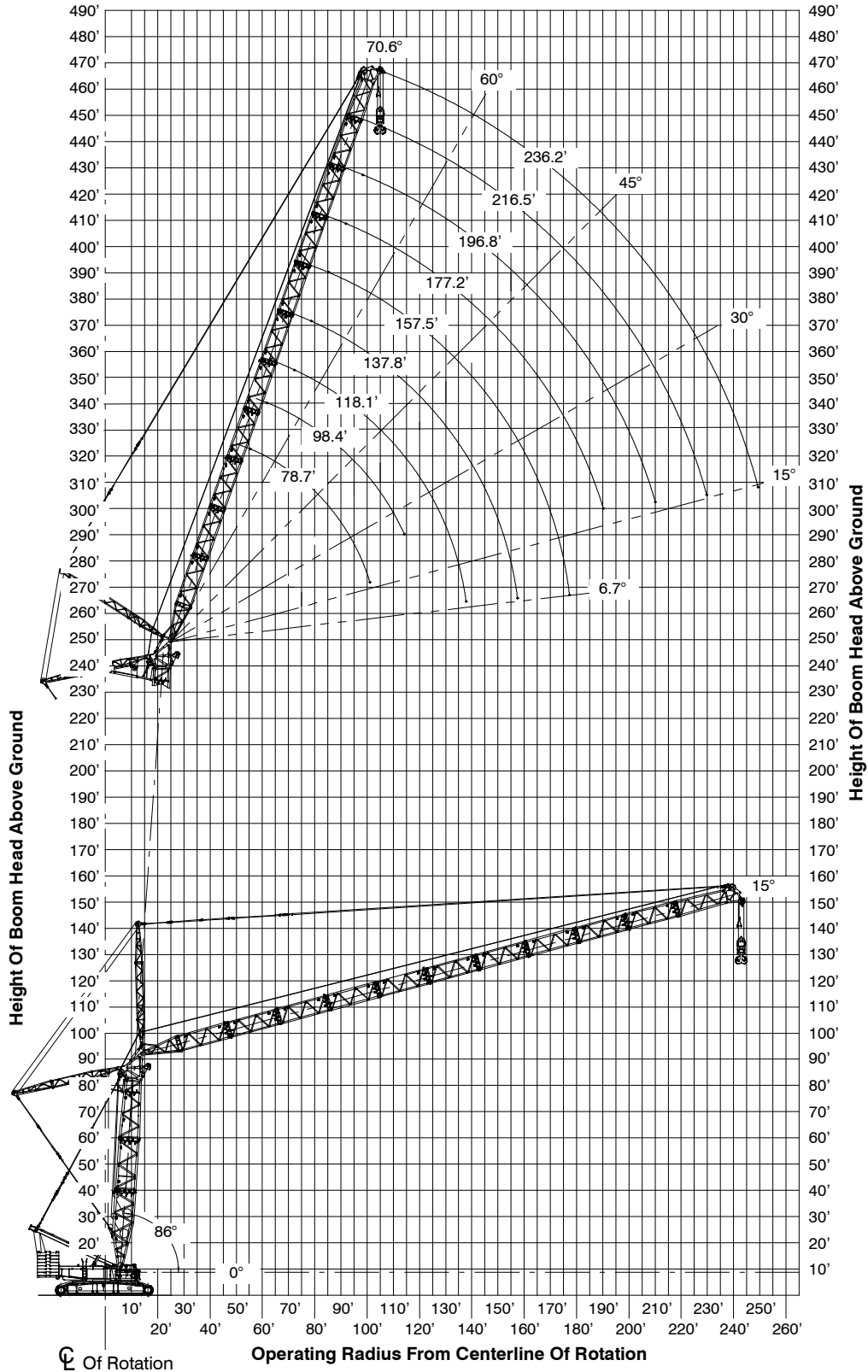
Luffing Boom Make-Up

Boom Length ft (m)	Boom Extensions – ft (m)							
	Base	HD Extensions				HD Light Ext	Tapered Ext	HD Top
	HB9.5 31.2 (9.5)	H6A 19.7 (6.0)	H12A 39.4 (12.0)	H12B 39.4 (12.0)	H12C 39.4 (12.0)	HL12B 39.4 (12.0)	HR7 23.0 (7.0)	HT1.5 4.9 (1.5)
98.4 (30.0)	1		1				1	1
118.1 (36.0)	1	1	1				1	1
137.8 (42.0)	1		1	1			1	1
157.5 (48.0)	1	1	1	1			1	1
177.2 (54.0)	1		1	1	1		1	1
196.9 (60.0)	1	1	1	1	1		1	1
216.5 (66.0)	1		1	1	1	1	1	1
236.2 (72.0)	1	1	1	1	1	1	1	1

Luffing Jib Make-Up

Boom Length ft (m)	Boom Extensions – ft (m)						
	Jib Base	LR Extensions				LR Light Ext	LR Top
	LB4.5 14.8 (4.5)	L6B 19.7 (6.0)	L6A 19.7 (6.0)	L12A 39.4 (12.0)	L12B 39.4 (12.0)	LL12A 39.4 (12.0)	LT7.5 24.6 (7.5)
78.7 (24.0)	1	1	1				1
98.4 (30.0)	1	1		1			1
118.1 (36.0)	1	1	1	1			1
137.8 (42.0)	1	1		1	1		1
157.5 (48.0)	1	1	1	1	1		1
177.2 (54.0)	1	1		1	1	1	1
196.9 (60.0)	1	1	1	1	1	1	1
216.5 (66.0)	1	1		1	1	2	1
236.2 (72.0)	1	1	1	1	1	2	1

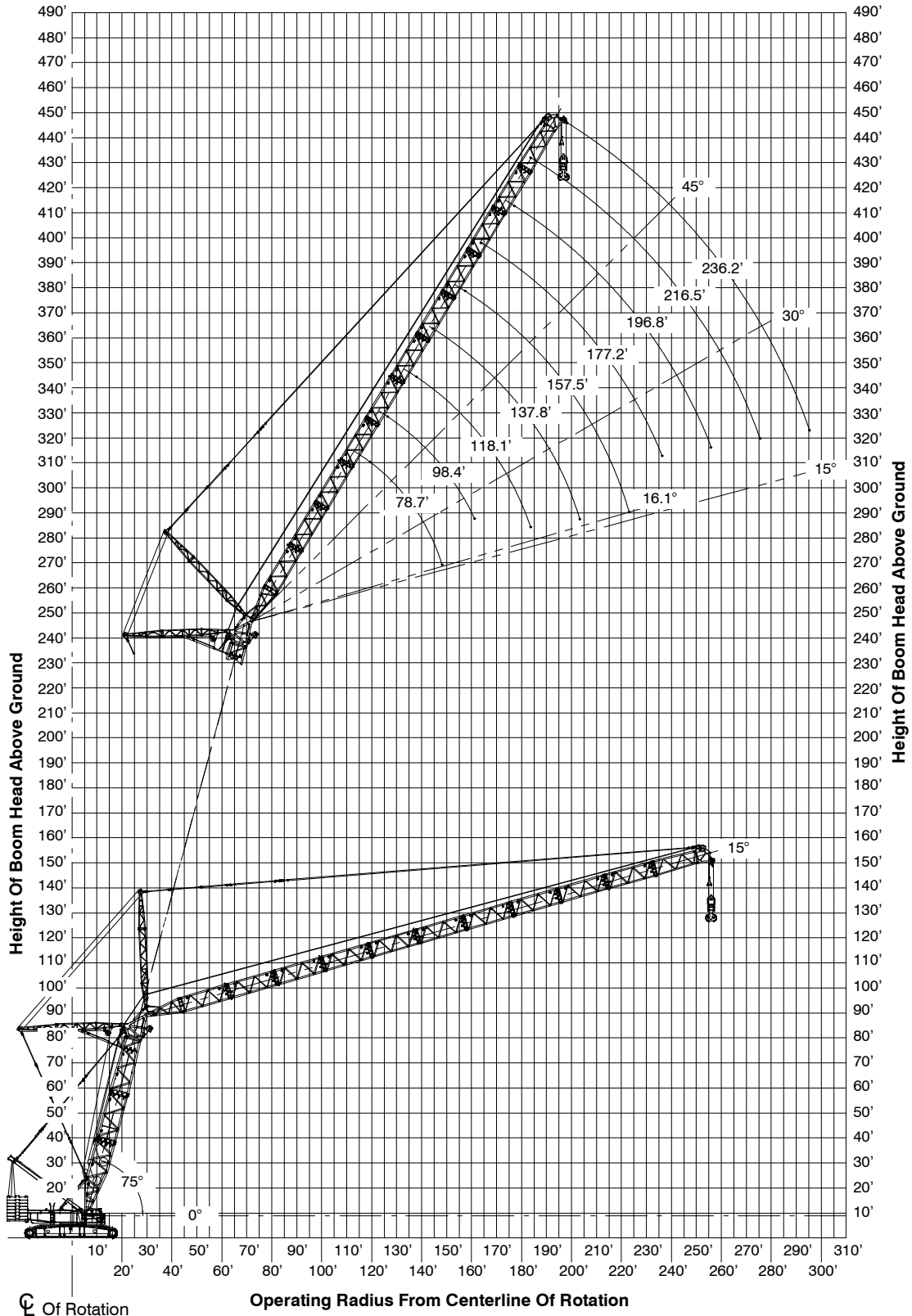
Working Range Diagram – 86° Boom Angle



Notes:

1. Boom geometry shown is for unloaded condition and crane standing level on firm supporting surface. Boom deflection, subsequent radius, and boom angle change must be accounted for when applying load to hook.

Working Range Diagram – 75° Boom Angle



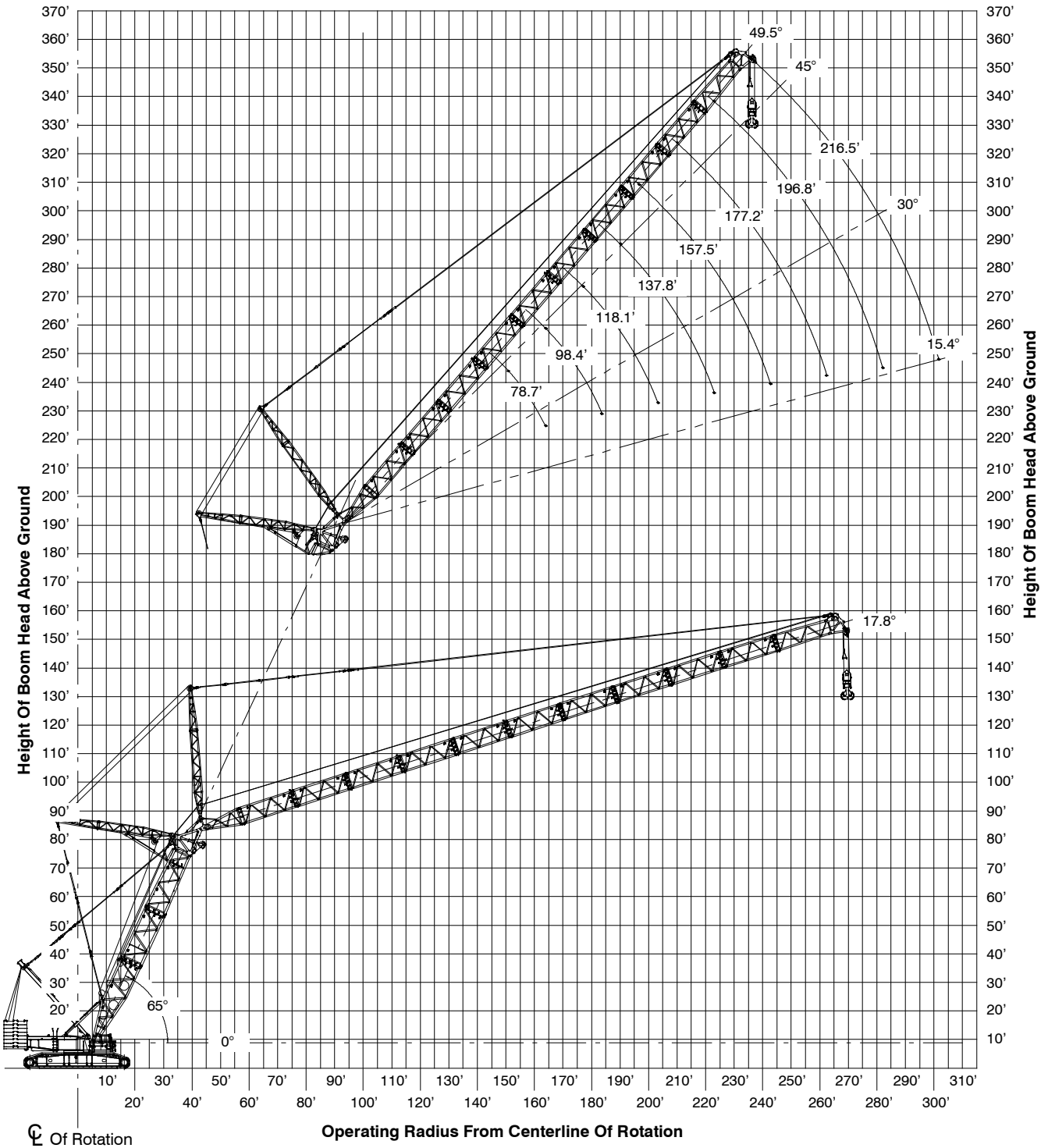
Notes:

Ⓢ Of Rotation

Operating Radius From Centerline Of Rotation

1. Boom geometry shown is for unloaded condition and crane standing level on firm supporting surface. Boom deflection, subsequent radius, and boom angle change must be accounted for when applying load to hook.

Working Range Diagram – 65° Boom Angle



Notes:

1. Boom geometry shown is for unloaded condition and crane standing level on firm supporting surface. Boom deflection, subsequent radius, and boom angle change must be accounted for when applying load to hook.

Load Charts

78.7 ft (24.0m) Luffing Boom + Luffing Jib – 360° Rotation ABCD+AB [396,900 lb + 136,686 lb (180mt + 62 mt)] Counterweight [All capacities are listed in kips (mt)]																
Load Radius ft (m)	Luffing Jib Length & Boom Angle															Load Radius ft (m)
	78.7 ft (24.0m)			98.4 ft (30.0m)			118.1 ft (36.0m)			137.8 ft (42.0m)			157.5 ft (48.0m)			
	86°	75°	65°	86°	75°	65°	86°	75°	65°	86°	75°	65°	86°	75°	65°	
50 (15.2)	411.7 (186.7)			413.7 (187.7)												50 (15.2)
60 (18.3)	319.7 (145.0)			320.2 (145.2)			319.7 (145.0)									60 (18.3)
70 (21.3)	259.7 (117.8)			260.0 (117.9)			259.3 (117.6)			258.8 (117.4)			257.8 (116.9)			70 (21.3)
80 (24.4)	217.7 (98.7)	207.5 (94.1)		217.9 (98.8)			217.3 (98.6)			216.6 (98.2)			215.5 (97.7)			80 (24.4)
90 (27.4)	186.6 (84.6)	177.8 (80.6)		187.0 (84.8)	177.6 (80.6)		186.4 (84.5)			185.6 (84.2)			184.5 (83.7)			90 (27.4)
100 (30.5)		155.3 (70.4)	148.4 (67.3)	163.1 (74.0)	155.0 (70.3)		162.4 (73.7)	153.8 (69.8)		161.7 (73.3)			160.4 (72.8)			100 (30.5)
110 (33.5)			131.0 (59.4)		136.9 (62.1)	130.6 (59.2)	143.7 (65.2)	135.7 (61.6)		142.8 (64.8)	134.7 (61.1)		141.7 (64.3)			110 (33.5)
120 (36.6)					122.2 (55.4)	116.5 (52.8)	128.3 (58.2)	121.2 (55.0)		127.4 (57.8)	120.2 (54.5)		126.3 (57.3)	118.7 (53.8)		120 (36.6)
130 (39.6)						105.0 (47.6)		109.1 (49.5)	103.5 (46.9)	114.7 (52.0)	108.2 (49.1)		113.7 (51.6)	106.7 (48.4)		130 (39.6)
140 (42.7)								99.1 (45.0)	93.9 (42.6)	104.1 (47.2)	98.0 (44.5)	92.8 (42.1)	103.0 (46.7)	96.4 (43.7)		140 (42.7)
150 (45.7)									85.7 (38.9)		89.3 (40.5)	84.4 (38.3)	93.8 (42.5)	88.0 (39.9)	82.7 (37.5)	150 (45.7)
160 (48.8)											82.0 (37.2)	77.4 (35.1)	86.1 (39.1)	80.5 (36.5)	75.7 (34.3)	160 (48.8)
170 (51.8)												71.3 (32.3)		74.0 (33.6)	69.5 (31.5)	170 (51.8)
180 (54.9)														68.3 (31.0)	64.2 (29.1)	180 (54.9)
190 (57.9)															59.4 (26.9)	190 (57.9)
200 (61.0)																200 (61.0)
210 (64.0)																210 (64.0)
220 (67.1)																220 (67.1)
230 (70.1)																230 (70.1)
240 (73.2)																240 (73.2)
250 (76.2)																250 (76.2)
260 (79.2)																260 (79.2)
270 (82.3)																270 (82.3)

--Load chart continues on the next page--

This material is supplied for reference use only. Operator must refer to in-cab Crane Rating Manual and Operator's Manual to determine allowable crane lifting capacities and assembly and operating procedures.

78.7 ft (24.0m) Luffing Boom + Luffing Jib – 360° Rotation
ABCD+AB [396,900 lb + 136,686 lb (180mt + 62 mt)] Counterweight
[All capacities are listed in kips (mt)]

Load Radius ft (m)	Luffing Jib Length & Boom Angle												Load Radius ft (m)
	177.2 ft (54.0m)			196.8 ft (60.0m)			216.5 ft (66.0m)			236.2 ft (72.0m)			
	86°	75°	65°	86°	75°	65°	86°	75°	65°	86°	75°	65°	
80 (24.4)	215.0 (97.5)												80 (24.4)
90 (27.4)	183.8 (83.4)			182.9 (83.0)			175.3 (79.5)						90 (27.4)
100 (30.5)	159.7 (72.4)			158.9 (72.1)			157.9 (71.6)			139.6 (63.3)			100 (30.5)
110 (33.5)	140.9 (63.9)			139.8 (63.4)			138.6 (62.9)			126.5 (57.4)			110 (33.5)
120 (36.6)	125.4 (56.9)			124.4 (56.4)			123.2 (55.9)			114.7 (52.0)			120 (36.6)
130 (39.6)	112.8 (51.2)	105.6 (47.9)		111.7 (50.7)			110.3 (50.0)			104.0 (47.2)			130 (39.6)
140 (42.7)	101.9 (46.2)	95.3 (43.2)		100.7 (45.7)	94.0 (42.6)		99.7 (45.2)			94.6 (42.9)			140 (42.7)
150 (45.7)	92.9 (42.1)	86.7 (39.3)		91.5 (41.5)	85.4 (38.7)		90.5 (41.1)	84.0 (38.1)		85.8 (38.9)			150 (45.7)
160 (48.8)	84.9 (38.5)	79.2 (35.9)	74.3 (33.7)	83.8 (38.0)	78.0 (35.4)		82.5 (37.4)	76.7 (34.8)		78.2 (35.5)	75.6 (34.3)		160 (48.8)
170 (51.8)	78.1 (35.4)	72.8 (33.0)	68.2 (30.9)	76.9 (34.9)	71.3 (32.3)		75.8 (34.4)	70.0 (31.8)		71.3 (32.3)	68.8 (31.2)		170 (51.8)
180 (54.9)	72.0 (32.7)	66.9 (30.3)	62.6 (28.4)	70.8 (32.1)	65.6 (29.8)	61.1 (27.7)	69.6 (31.6)	64.3 (29.2)		65.4 (29.7)	63.0 (28.6)		180 (54.9)
190 (57.9)		62.0 (28.1)	57.9 (26.3)	65.6 (29.8)	60.5 (27.4)	56.3 (25.5)	64.3 (29.2)	59.4 (26.9)	55.0 (24.9)	59.8 (27.1)	58.1 (26.4)		190 (57.9)
200 (61.0)		57.6 (26.1)	53.6 (24.3)	60.6 (27.5)	56.1 (25.4)	52.0 (23.6)	59.5 (27.0)	54.7 (24.8)	50.7 (23.0)	54.7 (24.8)	53.5 (24.3)	49.1 (22.3)	200 (61.0)
210 (64.0)			49.8 (22.6)		52.0 (23.6)	48.2 (21.9)	55.3 (25.1)	50.6 (23.0)	46.9 (21.3)	50.0 (22.7)	49.3 (22.4)	45.4 (20.6)	210 (64.0)
220 (67.1)					48.4 (22.0)	44.9 (20.4)	51.5 (23.4)	47.1 (21.4)	43.3 (19.6)	46.0 (20.9)	45.7 (20.7)	42.0 (19.1)	220 (67.1)
230 (70.1)						41.7 (18.9)		43.9 (19.9)	40.2 (18.2)	42.4 (19.2)	42.4 (19.2)	38.9 (17.6)	230 (70.1)
240 (73.2)									37.5 (17.0)	38.9 (17.6)	39.5 (17.9)	36.0 (16.3)	240 (73.2)
250 (76.2)									34.8 (15.8)		36.8 (16.7)	33.3 (15.1)	250 (76.2)
260 (79.2)												31.0 (14.1)	260 (79.2)
270 (82.3)												28.8 (13.1)	270 (82.3)

This material is supplied for reference use only. Operator must refer to in-cab Crane Rating Manual and Operator's Manual to determine allowable crane lifting capacities and assembly and operating procedures.

98.4 ft (30.0m) Luffing Boom + Luffing Jib – 360° Rotation
ABCD+AB [396,900 lb + 136,686 lb (180mt + 62 mt)] Counterweight
[All capacities are listed in kips (mt)]

Load Radius ft (m)	Luffing Jib Length & Boom Angle															Load Radius ft (m)					
	78.7 ft (24.0m)			98.4 ft (30.0m)			118.1 ft (36.0m)			137.8 ft (42.0m)			157.5 ft (48.0m)								
	86°	75°	65°	86°	75°	65°	86°	75°	65°	86°	75°	65°	86°	75°	65°						
50 (15.2)	411.9 (186.8)																50 (15.2)				
60 (18.3)	320.1 (145.2)			319.7 (145.0)			319.3 (144.8)										60 (18.3)				
70 (21.3)	259.9 (117.9)			259.5 (117.7)			258.8 (117.4)						258.4 (117.2)			257.3 (116.7)	70 (21.3)				
80 (24.4)	217.9 (98.8)	204.9 (92.9)		217.6 (98.7)			217.1 (98.5)						216.2 (98.1)			215.3 (97.7)	80 (24.4)				
90 (27.4)	186.6 (84.6)	175.6 (79.7)		186.6 (84.6)	174.8 (79.3)		186.0 (84.4)						185.2 (84.0)			184.1 (83.5)	90 (27.4)				
100 (30.5)		153.0 (69.4)		162.8 (73.8)	152.2 (69.0)		162.0 (73.5)	151.1 (68.5)					161.4 (73.2)			160.1 (72.6)	100 (30.5)				
110 (33.5)		135.4 (61.4)	127.3 (57.7)	143.9 (65.3)	134.7 (61.1)		143.2 (65.0)	133.3 (60.5)					142.4 (64.6)	132.2 (60.0)		141.2 (64.0)	110 (33.5)				
120 (36.6)			113.9 (51.7)		120.2 (54.5)	112.7 (51.1)	127.9 (58.0)	118.9 (53.9)					127.2 (57.7)	117.8 (53.4)		125.8 (57.1)	116.3 (52.8)	120 (36.6)			
130 (39.6)					108.2 (49.1)	101.5 (46.0)		107.1 (48.6)	100.0 (45.4)				114.5 (51.9)	106.0 (48.1)		113.2 (51.3)	104.5 (47.4)	130 (39.6)			
140 (42.7)						92.2 (41.8)		97.1 (44.0)	90.6 (41.1)				103.8 (47.1)	96.0 (43.5)		102.5 (46.5)	94.5 (42.9)	140 (42.7)			
150 (45.7)									82.4 (37.4)					87.5 (39.7)	81.3 (36.9)	93.6 (42.5)	86.0 (39.0)	150 (45.7)			
160 (48.8)									75.7 (34.3)					80.2 (36.4)	74.4 (33.7)	85.6 (38.8)	78.7 (35.7)	72.6 (32.9)	160 (48.8)		
170 (51.8)															68.4 (31.0)		72.2 (32.7)	66.6 (30.2)	170 (51.8)		
180 (54.9)																63.0 (28.6)		66.7 (30.3)	61.3 (27.8)	180 (54.9)	
190 (57.9)																			56.7 (25.7)	190 (57.9)	
200 (61.0)																				52.5 (23.8)	200 (61.0)

--Load chart continues on the next page--

This material is supplied for reference use only. Operator must refer to in-cab Crane Rating Manual and Operator's Manual to determine allowable crane lifting capacities and assembly and operating procedures.

98.4 ft (30.0m) Luffing Boom + Luffing Jib – 360° Rotation ABCD+AB [396,900 lb + 136,686 lb (180mt + 62 mt)] Counterweight [All capacities are listed in kips (mt)]													
Load Radius ft (m)	Luffing Jib Length & Boom Angle												Load Radius ft (m)
	177.2 ft (54.0m)			196.8 ft (60.0m)			216.5 ft (66.0m)			236.2 ft (72.0m)			
	86°	75°	65°	86°	75°	65°	86°	75°	65°	86°	75°	65°	
80 (24.4)	214.6 (97.3)												80 (24.4)
90 (27.4)	183.5 (83.2)			182.5 (82.8)			172.3 (78.2)						90 (27.4)
100 (30.5)	159.5 (72.3)			158.4 (71.8)			157.1 (71.3)			138.6 (62.9)			100 (30.5)
110 (33.5)	140.3 (63.6)			139.4 (63.2)			138.4 (62.8)			126.2 (57.2)			110 (33.5)
120 (36.6)	125.1 (56.7)			124.0 (56.2)			123.0 (55.8)			114.8 (52.1)			120 (36.6)
130 (39.6)	112.3 (50.9)	103.4 (46.9)		111.2 (50.4)			110.1 (49.9)			104.4 (47.4)			130 (39.6)
140 (42.7)	101.6 (46.1)	93.3 (42.3)		100.5 (45.6)	92.1 (41.8)		99.4 (45.1)			95.0 (43.1)			140 (42.7)
150 (45.7)	92.4 (41.9)	84.7 (38.4)		91.4 (41.5)	83.4 (37.8)		90.3 (41.0)	82.0 (37.2)		86.5 (39.2)			150 (45.7)
160 (48.8)	84.7 (38.4)	77.3 (35.1)		83.5 (37.9)	76.1 (34.5)		82.3 (37.3)	74.7 (33.9)		78.9 (35.8)	73.4 (33.3)		160 (48.8)
170 (51.8)	77.7 (35.2)	71.1 (32.3)	65.1 (29.5)	76.6 (34.7)	69.6 (31.6)		75.3 (34.2)	68.2 (30.9)		72.0 (32.7)	66.9 (30.3)		170 (51.8)
180 (54.9)	71.7 (32.5)	65.4 (29.7)	59.9 (27.2)	70.6 (32.0)	64.0 (29.0)		69.3 (31.4)	62.8 (28.5)		66.0 (29.9)	61.3 (27.8)		180 (54.9)
190 (57.9)		60.5 (27.4)	55.2 (25.0)	65.1 (29.5)	59.0 (26.8)	53.7 (24.4)	64.0 (29.0)	57.6 (26.1)		60.1 (27.3)	56.3 (25.5)		190 (57.9)
200 (61.0)		56.0 (25.4)	51.1 (23.2)	60.5 (27.4)	54.4 (24.7)	49.5 (22.5)	59.1 (26.8)	53.2 (24.1)	48.0 (21.8)	55.1 (25.0)	51.9 (23.5)		200 (61.0)
210 (64.0)			47.3 (21.5)		50.6 (23.0)	45.8 (20.8)	55.1 (25.0)	49.3 (22.4)	44.3 (20.1)	50.6 (23.0)	48.0 (21.8)	42.9 (19.5)	210 (64.0)
220 (67.1)			44.1 (20.0)		47.0 (21.3)	42.4 (19.2)	51.1 (23.2)	45.7 (20.7)	41.0 (18.6)	46.5 (21.1)	44.4 (20.1)	39.5 (17.9)	220 (67.1)
230 (70.1)						39.3 (17.8)		42.4 (19.2)	38.0 (17.2)	42.6 (19.3)	41.1 (18.6)	36.4 (16.5)	230 (70.1)
240 (73.2)						36.7 (16.6)		39.6 (18.0)	35.3 (16.0)	39.4 (17.9)	38.2 (17.3)	33.8 (15.3)	240 (73.2)
250 (76.2)										32.6 (14.8)	35.5 (16.1)	31.1 (14.1)	250 (76.2)
260 (79.2)										30.5 (13.8)	32.9 (14.9)	28.9 (13.1)	260 (79.2)
270 (82.3)												26.9 (12.2)	270 (82.3)
280 (85.3)												24.9 (11.3)	280 (85.3)

This material is supplied for reference use only. Operator must refer to in-cab Crane Rating Manual and Operator's Manual to determine allowable crane lifting capacities and assembly and operating procedures.

**118.1 ft (36.0m) Luffing Boom + Luffing Jib - 360° Rotation
 ABCD+AB [396,900 lb + 136,686 lb (180mt + 62 mt)] Counterweight
 [All capacities are listed in kips (mt)]**

Load Radius ft (m)	Luffing Jib Length & Boom Angle															Load Radius ft (m)	
	78.7 ft (24.0m)			98.4 ft (30.0m)			118.1 ft (36.0m)			137.8 ft (42.0m)			157.5 ft (48.0m)				
	86°	75°	65°	86°	75°	65°	86°	75°	65°	86°	75°	65°	86°	75°	65°		
50 (15.2)	411.0 (186.4)																50 (15.2)
60 (18.3)	320.7 (145.5)			320.8 (145.5)			320.2 (145.2)										60 (18.3)
70 (21.3)	261.9 (118.8)			260.2 (118.0)			259.6 (117.8)				259.3 (117.6)						70 (21.3)
80 (24.4)	218.2 (99.0)			218.1 (98.9)			217.5 (98.7)				217.0 (98.4)			215.9 (97.9)			80 (24.4)
90 (27.4)	187.1 (84.9)	171.1 (77.6)		187.0 (84.8)			186.4 (84.5)				185.7 (84.2)			184.7 (83.8)			90 (27.4)
100 (30.5)		149.2 (67.7)		163.0 (73.9)	148.3 (67.3)		162.4 (73.7)				161.7 (73.3)			160.6 (72.8)			100 (30.5)
110 (33.5)		131.7 (59.7)		144.1 (65.4)	131.1 (59.5)		143.4 (65.0)	129.7 (58.8)			142.8 (64.8)			141.7 (64.3)			110 (33.5)
120 (36.6)			107.9 (48.9)		116.7 (52.9)		128.1 (58.1)	115.7 (52.5)			127.4 (57.8)	114.6 (52.0)		126.2 (57.2)			120 (36.6)
130 (39.6)			97.1 (44.0)		105.3 (47.8)	95.9 (43.5)	115.4 (52.3)	104.0 (47.2)			114.7 (52.0)	102.9 (46.7)		113.4 (51.4)	101.3 (45.9)		130 (39.6)
140 (42.7)						86.9 (39.4)		94.2 (42.7)	85.3 (38.7)		104.0 (47.2)	93.2 (42.3)		102.7 (46.6)	91.6 (41.5)		140 (42.7)
150 (45.7)						79.1 (35.9)		85.9 (39.0)	77.5 (35.2)		94.8 (43.0)	84.9 (38.5)		93.5 (42.4)	83.3 (37.8)		150 (45.7)
160 (48.8)								70.9 (32.2)			77.7 (35.2)	69.6 (31.6)		85.8 (38.9)	76.0 (34.5)		160 (48.8)
170 (51.8)								65.3 (29.6)			71.5 (32.4)	64.0 (29.0)		69.9 (31.7)	62.2 (28.2)		170 (51.8)
180 (54.9)												59.0 (26.8)		64.4 (29.2)	57.1 (25.9)		180 (54.9)
190 (57.9)												54.5 (24.7)		59.6 (27.0)	52.8 (23.9)		190 (57.9)
200 (61.0)															48.9 (22.2)		200 (61.0)
210 (64.0)															45.4 (20.6)		210 (64.0)

--Load chart continues on the next page--

This material is supplied for reference use only. Operator must refer to in-cab Crane Rating Manual and Operator's Manual to determine allowable crane lifting capacities and assembly and operating procedures.

118.1 ft (36.0m) Luffing Boom + Luffing Jib – 360° Rotation ABCD+AB [396,900 lb + 136,686 lb (180mt + 62 mt)] Counterweight [All capacities are listed in kips (mt)]													
Load Radius ft (m)	Luffing Jib Length & Boom Angle												Load Radius ft (m)
	177.2 ft (54.0m)			196.8 ft (60.0m)			216.5 ft (66.0m)			236.2 ft (72.0m)			
	86°	75°	65°	86°	75°	65°	86°	75°	65°	86°	75°	65°	
80 (24.4)	215.3 (97.7)												80 (24.4)
90 (27.4)	184.0 (83.5)			183.1 (83.1)									90 (27.4)
100 (30.5)	160.0 (72.6)			158.8 (72.0)			153.3 (69.5)			127.8 (58.0)			100 (30.5)
110 (33.5)	140.8 (63.9)			139.8 (63.4)			139.3 (63.2)			120.5 (54.7)			110 (33.5)
120 (36.6)	125.4 (56.9)			124.4 (56.4)			123.9 (56.2)			113.8 (51.6)			120 (36.6)
130 (39.6)	112.5 (51.0)			111.5 (50.6)			111.0 (50.3)			104.4 (47.4)			130 (39.6)
140 (42.7)	101.9 (46.2)	90.4 (41.0)		100.8 (45.7)			100.1 (45.4)			95.0 (43.1)			140 (42.7)
150 (45.7)	92.7 (42.0)	82.0 (37.2)		91.6 (41.5)	80.7 (36.6)		90.9 (41.2)			86.7 (39.3)			150 (45.7)
160 (48.8)	84.7 (38.4)	75.0 (34.0)		83.6 (37.9)	73.4 (33.3)		83.0 (37.6)	72.7 (33.0)		79.2 (35.9)			160 (48.8)
170 (51.8)	77.9 (35.3)	68.7 (31.2)		76.6 (34.7)	67.1 (30.4)		76.0 (34.5)	66.4 (30.1)		72.0 (32.7)	64.5 (29.3)		170 (51.8)
180 (54.9)	71.8 (32.6)	63.1 (28.6)	55.7 (25.3)	70.5 (32.0)	61.9 (28.1)		70.0 (31.8)	60.8 (27.6)		65.9 (29.9)	59.1 (26.8)		180 (54.9)
190 (57.9)		58.3 (26.4)	51.2 (23.2)	65.4 (29.7)	56.7 (25.7)	49.7 (22.5)	64.5 (29.3)	56.1 (25.4)		60.3 (27.4)	54.1 (24.5)		190 (57.9)
200 (61.0)		54.0 (24.5)	47.3 (21.5)	60.4 (27.4)	52.5 (23.8)	45.8 (20.8)	59.6 (27.0)	51.5 (23.4)		55.3 (25.1)	49.8 (22.6)		200 (61.0)
210 (64.0)		50.2 (22.8)	43.8 (19.9)		48.7 (22.1)	42.0 (19.1)	55.5 (25.2)	47.8 (21.7)	41.2 (18.7)	50.9 (23.1)	45.8 (20.8)		210 (64.0)
220 (67.1)			40.5 (18.4)		45.1 (20.5)	39.1 (17.7)	51.6 (23.4)	43.9 (19.9)	37.9 (17.2)	46.6 (21.1)	42.5 (19.3)	36.0 (16.3)	220 (67.1)
230 (70.1)			37.8 (17.1)		42.0 (19.1)	36.0 (16.3)		41.1 (18.6)	35.1 (15.9)	42.8 (19.4)	39.3 (17.8)	32.9 (14.9)	230 (70.1)
240 (73.2)						33.4 (15.1)		38.2 (17.3)	32.4 (14.7)	39.6 (18.0)	36.4 (16.5)	30.4 (13.8)	240 (73.2)
250 (76.2)						31.0 (14.1)			30.0 (13.6)		33.7 (15.3)	28.0 (12.7)	250 (76.2)
260 (79.2)									27.7 (12.6)		31.4 (14.2)	25.8 (11.7)	260 (79.2)
270 (82.3)												23.8 (10.8)	270 (82.3)
280 (85.3)												22.0 (10.0)	280 (85.3)

This material is supplied for reference use only. Operator must refer to in-cab Crane Rating Manual and Operator's Manual to determine allowable crane lifting capacities and assembly and operating procedures.

137.8 ft (42.0m) Luffing Boom + Luffing Jib - 360° Rotation
ABCD+AB [396,900 lb + 136,686 lb (180mt + 62 mt)] Counterweight
[All capacities are listed in kips (mt)]

Load Radius ft (m)	Luffing Jib Length & Boom Angle															Load Radius ft (m)	
	78.7 ft (24.0m)			98.4 ft (30.0m)			118.1 ft (36.0m)			137.8 ft (42.0m)			157.5 ft (48.0m)				
	86°	75°	65°	86°	75°	65°	86°	75°	65°	86°	75°	65°	86°	75°	65°		
50 (15.2)	396.4 (179.8)																50 (15.2)
60 (18.3)	319.9 (145.1)			319.7 (145.0)			312.8 (141.9)										60 (18.3)
70 (21.3)	259.5 (117.7)			259.3 (117.6)			259.1 (117.5)				258.4 (117.2)						70 (21.3)
80 (24.4)	217.4 (98.6)			217.2 (98.5)			216.5 (98.2)				216.2 (98.1)			215.3 (97.7)			80 (24.4)
90 (27.4)	186.1 (84.4)	167.0 (75.7)		186.2 (84.5)			185.5 (84.1)				185.1 (84.0)			184.0 (83.5)			90 (27.4)
100 (30.5)		145.3 (65.9)		162.4 (73.7)	144.4 (65.5)		161.7 (73.3)				161.0 (73.0)			160.0 (72.6)			100 (30.5)
110 (33.5)		128.2 (58.2)		143.4 (65.0)	127.5 (57.8)		142.8 (64.8)	126.2 (57.2)			142.1 (64.5)			141.0 (64.0)			110 (33.5)
120 (36.6)		114.4 (51.9)			113.5 (51.5)		127.4 (57.8)	112.4 (51.0)			126.7 (57.5)	111.3 (50.5)		125.6 (57.0)			120 (36.6)
130 (39.6)			92.1 (41.8)		102.2 (46.4)		114.7 (52.0)	100.9 (45.8)			114.1 (51.8)	99.8 (45.3)		113.0 (51.3)	98.2 (44.5)		130 (39.6)
140 (42.7)			83.4 (37.8)		92.5 (42.0)	82.2 (37.3)		91.4 (41.5)			103.4 (46.9)	90.5 (41.1)		102.2 (46.4)	88.8 (40.3)		140 (42.7)
150 (45.7)						74.9 (34.0)		83.3 (37.8)	73.1 (33.2)		94.2 (42.7)	82.2 (37.3)		93.1 (42.2)	80.7 (36.6)		150 (45.7)
160 (48.8)						68.3 (31.0)			66.8 (30.3)			75.1 (34.1)	65.6 (29.8)	85.2 (38.6)	73.5 (33.3)		160 (48.8)
170 (51.8)									61.3 (27.8)			69.1 (31.3)	60.0 (27.2)	78.4 (35.6)	67.5 (30.6)		170 (51.8)
180 (54.9)									56.6 (25.7)				55.3 (25.1)		62.2 (28.2)	53.4 (24.2)	180 (54.9)
190 (57.9)													51.0 (23.1)		57.4 (26.0)	49.0 (22.2)	190 (57.9)
200 (61.0)													47.1 (21.4)			45.3 (20.5)	200 (61.0)
210 (64.0)																42.0 (19.1)	210 (64.0)
220 (67.1)																39.0 (17.7)	220 (67.1)

--Load chart continues on the next page--

This material is supplied for reference use only. Operator must refer to in-cab Crane Rating Manual and Operator's Manual to determine allowable crane lifting capacities and assembly and operating procedures.

137.8 ft (42.0m) Luffing Boom + Luffing Jib – 360° Rotation ABCD+AB [396,900 lb + 136,686 lb (180mt + 62 mt)] Counterweight [All capacities are listed in kips (mt)]													
Load Radius ft (m)	Luffing Jib Length & Boom Angle												Load Radius ft (m)
	177.2 ft (54.0m)			196.8 ft (60.0m)			216.5 ft (66.0m)			236.2 ft (72.0m)			
	86°	75°	65°	86°	75°	65°	86°	75°	65°	86°	75°	65°	
80 (24.4)	213.6 (96.9)												80 (24.4)
90 (27.4)	183.3 (83.1)			180.6 (81.9)									90 (27.4)
100 (30.5)	159.3 (72.3)			158.3 (71.8)			144.4 (65.5)			122.7 (55.7)			100 (30.5)
110 (33.5)	140.2 (63.6)			139.3 (63.2)			136.5 (61.9)			115.5 (52.4)			110 (33.5)
120 (36.6)	124.8 (56.6)			123.9 (56.2)			123.2 (55.9)			109.3 (49.6)			120 (36.6)
130 (39.6)	112.1 (50.8)			111.0 (50.3)			110.5 (50.1)			102.2 (46.4)			130 (39.6)
140 (42.7)	101.4 (46.0)	87.4 (39.6)		100.3 (45.5)			99.5 (45.1)			93.4 (42.4)			140 (42.7)
150 (45.7)	92.2 (41.8)	79.4 (36.0)		91.1 (41.3)	77.8 (35.3)		90.5 (41.1)			85.3 (38.7)			150 (45.7)
160 (48.8)	84.3 (38.2)	72.4 (32.8)		83.2 (37.7)	70.8 (32.1)		82.5 (37.4)	70.1 (31.8)		78.3 (35.5)			160 (48.8)
170 (51.8)	77.3 (35.1)	66.2 (30.0)		76.2 (34.6)	64.7 (29.3)		75.7 (34.3)	64.0 (29.0)		71.5 (32.4)	62.7 (28.4)		170 (51.8)
180 (54.9)	71.4 (32.4)	60.9 (27.6)		70.2 (31.8)	59.3 (26.9)		69.5 (31.5)	58.6 (26.6)		65.6 (29.8)	57.4 (26.0)		180 (54.9)
190 (57.9)		56.1 (25.4)	47.7 (21.6)	64.9 (29.4)	54.7 (24.8)		64.2 (29.1)	53.9 (24.4)		60.3 (27.4)	52.6 (23.9)		190 (57.9)
200 (61.0)		51.5 (23.4)	43.9 (19.9)	60.1 (27.3)	50.4 (22.9)	42.2 (19.1)	59.3 (26.9)	49.6 (22.5)		55.2 (25.0)	48.3 (21.9)		200 (61.0)
210 (64.0)		48.0 (21.8)	40.5 (18.4)		46.7 (21.2)	38.7 (17.6)	55.1 (25.0)	45.8 (20.8)	37.9 (17.2)	50.6 (23.0)	44.5 (20.2)		210 (64.0)
220 (67.1)			37.5 (17.0)		43.2 (19.6)	35.7 (16.2)	51.1 (23.2)	42.3 (19.2)	34.8 (15.8)	46.6 (21.1)	41.1 (18.6)		220 (67.1)
230 (70.1)			34.7 (15.7)		40.2 (18.2)	32.9 (14.9)		39.3 (17.8)	32.0 (14.5)	43.0 (19.5)	38.0 (17.2)	30.6 (13.9)	230 (70.1)
240 (73.2)						30.6 (13.9)		36.4 (16.5)	29.4 (13.3)	39.7 (18.0)	35.1 (15.9)	28.0 (12.7)	240 (73.2)
250 (76.2)						28.2 (12.8)		33.7 (15.3)	27.2 (12.3)		32.4 (14.7)	25.8 (11.7)	250 (76.2)
260 (79.2)										25.2 (11.4)	30.1 (13.7)	23.6 (10.7)	260 (79.2)
270 (82.3)										23.1 (10.5)	27.9 (12.7)	21.6 (9.8)	270 (82.3)
280 (85.3)												20.0 (9.1)	280 (85.3)
290 (88.4)												18.2 (8.3)	290 (88.4)

This material is supplied for reference use only. Operator must refer to in-cab Crane Rating Manual and Operator's Manual to determine allowable crane lifting capacities and assembly and operating procedures.

157.5 ft (48.0m) Luffing Boom + Luffing Jib - 360° Rotation
ABCD+AB [396,900 lb + 136,686 lb (180mt + 62 mt)] Counterweight
[All capacities are listed in kips (mt)]

Load Radius ft (m)	Luffing Jib Length & Boom Angle															Load Radius ft (m)	
	78.7 ft (24.0m)			98.4 ft (30.0m)			118.1 ft (36.0m)			137.8 ft (42.0m)			157.5 ft (48.0m)				
	86°	75°	65°	86°	75°	65°	86°	75°	65°	86°	75°	65°	86°	75°	65°		
50 (15.2)	344.5 (156.3)																50 (15.2)
60 (18.3)	319.8 (145.1)			297.2 (134.8)													60 (18.3)
70 (21.3)	261.2 (118.5)			261.1 (118.4)			254.9 (115.6)				237.6 (107.8)						70 (21.3)
80 (24.4)	218.7 (99.2)			218.7 (99.2)			218.1 (98.9)				217.0 (98.4)			207.4 (94.1)			80 (24.4)
90 (27.4)	187.3 (85.0)			187.5 (85.0)			186.9 (84.8)				185.8 (84.3)			184.7 (83.8)			90 (27.4)
100 (30.5)		141.9 (64.4)		163.5 (74.2)			162.8 (73.8)				161.8 (73.4)			160.7 (72.9)			100 (30.5)
110 (33.5)		125.1 (56.7)		144.4 (65.5)	124.6 (56.5)		143.9 (65.3)				142.9 (64.8)			141.7 (64.3)			110 (33.5)
120 (36.6)		111.6 (50.6)			110.9 (50.3)		128.4 (58.2)	109.5 (49.7)			127.3 (57.7)			126.2 (57.2)			120 (36.6)
130 (39.6)			86.6 (39.3)		99.9 (45.3)		115.6 (52.4)	98.4 (44.6)			114.5 (51.9)	96.9 (44.0)		113.4 (51.4)	86.0 (39.0)		130 (39.6)
140 (42.7)			78.3 (35.5)		90.2 (40.9)			89.1 (40.4)			103.8 (47.1)	87.6 (39.7)		102.7 (46.6)	78.0 (35.4)		140 (42.7)
150 (45.7)			74.1 (33.6)			70.5 (32.0)		81.1 (36.8)			94.6 (42.9)	79.5 (36.1)		93.5 (42.4)	71.4 (32.4)		150 (45.7)
160 (48.8)						64.1 (29.1)		74.1 (33.6)	62.4 (28.3)			72.8 (33.0)		85.7 (38.9)	65.3 (29.6)		160 (48.8)
170 (51.8)						58.9 (26.7)			57.3 (26.0)			66.9 (30.3)	55.6 (25.2)	78.8 (35.7)	60.0 (27.2)		170 (51.8)
180 (54.9)									52.7 (23.9)			61.5 (27.9)	51.0 (23.1)		55.4 (25.1)		180 (54.9)
190 (57.9)									48.6 (22.0)				47.0 (21.3)		51.3 (23.3)	45.2 (20.5)	190 (57.9)
200 (61.0)													43.4 (19.7)			41.6 (18.9)	200 (61.0)
210 (64.0)													40.3 (18.3)			38.3 (17.4)	210 (64.0)
220 (67.1)																35.6 (16.1)	220 (67.1)

--Load chart continues on the next page--

This material is supplied for reference use only. Operator must refer to in-cab Crane Rating Manual and Operator's Manual to determine allowable crane lifting capacities and assembly and operating procedures.

157.5 ft (48.0m) Luffing Boom + Luffing Jib – 360° Rotation ABCD+AB [396,900 lb + 136,686 lb (180mt + 62 mt)] Counterweight [All capacities are listed in kips (mt)]													
Load Radius ft (m)	Luffing Jib Length & Boom Angle												Load Radius ft (m)
	177.2 ft (54.0m)			196.8 ft (60.0m)			216.5 ft (66.0m)			236.2 ft (72.0m)			
	86°	75°	65°	86°	75°	65°	86°	75°	65°	86°	75°	65°	
90 (27.4)	181.5 (82.3)			165.1 (74.9)									90 (27.4)
100 (30.5)	160.2 (72.7)			156.6 (71.0)			136.6 (62.0)			122.3 (55.5)			100 (30.5)
110 (33.5)	141.1 (64.0)			139.5 (63.3)			128.2 (58.2)			114.5 (51.9)			110 (33.5)
120 (36.6)	125.7 (57.0)			124.0 (56.2)			119.8 (54.3)			106.5 (48.3)			120 (36.6)
130 (39.6)	112.7 (51.1)			111.2 (50.4)			110.5 (50.1)			98.4 (44.6)			130 (39.6)
140 (42.7)	102.0 (46.3)	86.0 (39.0)		100.3 (45.5)			99.8 (45.3)			90.7 (41.1)			140 (42.7)
150 (45.7)	92.9 (42.1)	78.0 (35.4)		91.1 (41.3)			90.7 (41.1)			83.3 (37.8)			150 (45.7)
160 (48.8)	84.9 (38.5)	71.4 (32.4)		83.3 (37.8)	68.0 (30.8)		82.7 (37.5)			76.6 (34.7)			160 (48.8)
170 (51.8)	77.9 (35.3)	65.3 (29.6)		76.4 (34.7)	62.0 (28.1)		75.7 (34.3)	61.4 (27.9)		70.4 (31.9)			170 (51.8)
180 (54.9)	72.0 (32.7)	60.0 (27.2)		70.1 (31.8)	57.0 (25.9)		69.8 (31.7)	56.0 (25.4)		64.6 (29.3)	54.8 (24.9)		180 (54.9)
190 (57.9)	66.5 (30.2)	55.4 (25.1)	45.2 (20.5)	64.9 (29.4)	52.3 (23.7)		64.3 (29.2)	51.4 (23.3)		59.4 (26.9)	50.1 (22.7)		190 (57.9)
200 (61.0)		51.3 (23.3)	41.6 (18.9)	59.9 (27.2)	48.1 (21.8)		59.5 (27.0)	47.3 (21.5)		54.5 (24.7)	46.1 (20.9)		200 (61.0)
210 (64.0)			38.3 (17.4)	55.7 (25.3)	44.5 (20.2)	34.8 (15.8)	55.1 (25.0)	43.6 (19.8)		50.2 (22.8)	42.3 (19.2)		210 (64.0)
220 (67.1)			35.6 (16.1)		41.1 (18.6)	31.8 (14.4)	51.4 (23.3)	40.3 (18.3)	31.0 (14.1)	46.3 (21.0)	39.0 (17.7)		220 (67.1)
230 (70.1)					38.0 (17.2)	29.2 (13.2)		37.3 (16.9)	28.3 (12.8)	42.6 (19.3)	36.0 (16.3)		230 (70.1)
240 (73.2)					35.4 (16.1)	26.8 (12.2)		34.4 (15.6)	26.0 (11.8)	39.4 (17.9)	33.1 (15.0)	24.4 (11.1)	240 (73.2)
250 (76.2)						24.7 (11.2)		32.0 (14.5)	23.8 (10.8)		30.7 (13.9)	22.3 (10.1)	250 (76.2)
260 (79.2)						22.8 (10.3)			21.8 (9.9)		28.3 (12.8)	20.3 (9.2)	260 (79.2)
270 (82.3)									20.1 (9.1)		26.2 (11.9)	18.5 (8.4)	270 (82.3)
280 (85.3)										18.4 (8.3)		16.8 (7.6)	280 (85.3)
290 (88.4)												15.2 (6.9)	290 (88.4)
300 (91.4)												13.9 (6.3)	300 (91.4)

This material is supplied for reference use only. Operator must refer to in-cab Crane Rating Manual and Operator's Manual to determine allowable crane lifting capacities and assembly and operating procedures.

177.2 ft (54.0m) Luffing Boom + Luffing Jib - 360° Rotation
ABCD+AB [396,900 lb + 136,686 lb (180mt + 62 mt)] Counterweight
[All capacities are listed in kips (mt)]

Load Radius ft (m)	Luffing Jib Length & Boom Angle															Load Radius ft (m)	
	78.7 ft (24.0m)			98.4 ft (30.0m)			118.1 ft (36.0m)			137.8 ft (42.0m)			157.5 ft (48.0m)				
	86°	75°	65°	86°	75°	65°	86°	75°	65°	86°	75°	65°	86°	75°	65°		
50 (15.2)	293.5 (133.1)															50 (15.2)	
60 (18.3)	276.0 (125.2)			254.6 (115.5)												60 (18.3)	
70 (21.3)	240.7 (109.2)			238.6 (108.2)			221.8 (100.6)				203.9 (92.5)					70 (21.3)	
80 (24.4)	201.1 (91.2)			205.5 (93.2)			208.2 (94.4)				195.1 (88.5)			179.4 (81.4)		80 (24.4)	
90 (27.4)	171.2 (77.7)			176.2 (79.9)			179.4 (81.4)				180.8 (82.0)			172.1 (78.1)		90 (27.4)	
100 (30.5)	153.0 (69.4)	141.3 (64.1)		153.5 (69.6)			157.1 (71.3)				159.4 (72.3)			159.3 (72.3)		100 (30.5)	
110 (33.5)		124.6 (56.5)		135.5 (61.5)	124.2 (56.3)		139.2 (63.1)				141.4 (64.1)			140.6 (63.8)		110 (33.5)	
120 (36.6)		110.8 (50.3)			110.5 (50.1)		124.7 (56.6)	108.2 (49.1)			126.1 (57.2)			125.2 (56.8)		120 (36.6)	
130 (39.6)		99.6 (45.2)			99.5 (45.1)		112.7 (51.1)	97.3 (44.1)			113.6 (51.5)	96.0 (43.5)		112.5 (51.0)		130 (39.6)	
140 (42.7)			77.9 (35.3)		80.0 (36.3)			88.0 (39.9)			102.9 (46.7)	86.9 (39.4)		101.8 (46.2)	85.2 (38.6)	140 (42.7)	
150 (45.7)			70.9 (32.2)		82.0 (37.2)			80.2 (36.4)			93.8 (42.5)	78.9 (35.8)		92.7 (42.0)	77.4 (35.1)	150 (45.7)	
160 (48.8)			64.6 (29.3)			64.0 (29.0)		73.3 (33.2)				72.1 (32.7)		85.0 (38.6)	70.8 (32.1)	160 (48.8)	
170 (51.8)						58.7 (26.6)			56.5 (25.6)			66.2 (30.0)		77.9 (35.3)	64.7 (29.3)	170 (51.8)	
180 (54.9)						54.0 (24.5)			51.8 (23.5)			60.9 (27.6)	50.3 (22.8)		59.4 (26.9)	180 (54.9)	
190 (57.9)									47.9 (21.7)				46.4 (21.0)		54.8 (24.9)	44.6 (20.2)	190 (57.9)
200 (61.0)													42.3 (19.2)		50.6 (23.0)	41.0 (18.6)	200 (61.0)
210 (64.0)													39.6 (18.0)			37.9 (17.2)	210 (64.0)
220 (67.1)																35.0 (15.9)	220 (67.1)
230 (70.1)																32.3 (14.7)	230 (70.1)

-- Load chart continues on the next page --

This material is supplied for reference use only. Operator must refer to in-cab Crane Rating Manual and Operator's Manual to determine allowable crane lifting capacities and assembly and operating procedures.

177.2 ft (54.0m) Luffing Boom + Luffing Jib – 360° Rotation ABCD+AB [396,900 lb + 136,686 lb (180mt + 62 mt)] Counterweight [All capacities are listed in kips (mt)]													
Load Radius ft (m)	Luffing Jib Length & Boom Angle												Load Radius ft (m)
	177.2 ft (54.0m)			196.8 ft (60.0m)			216.5 ft (66.0m)			236.2 ft (72.0m)			
	86°	75°	65°	86°	75°	65°	86°	75°	65°	86°	75°	65°	
90 (27.4)	160.2 (72.7)			145.8 (66.1)									90 (27.4)
100 (30.5)	153.8 (69.8)			140.1 (63.5)			124.3 (56.4)						100 (30.5)
110 (33.5)	139.9 (63.5)			134.3 (60.9)			117.8 (53.4)			105.9 (48.0)			110 (33.5)
120 (36.6)	124.5 (56.5)			122.9 (55.7)			110.9 (50.3)			99.5 (45.1)			120 (36.6)
130 (39.6)	111.9 (50.8)			110.1 (49.9)			104.2 (47.3)			92.9 (42.1)			130 (39.6)
140 (42.7)	101.1 (45.9)			99.4 (45.1)			97.5 (44.2)			86.3 (39.1)			140 (42.7)
150 (45.7)	92.0 (41.7)	76.3 (34.6)		90.5 (41.1)			90.0 (40.8)			80.2 (36.4)			150 (45.7)
160 (48.8)	84.1 (38.1)	69.4 (31.5)		82.5 (37.4)	67.3 (30.5)		82.1 (37.2)			73.9 (33.5)			160 (48.8)
170 (51.8)	77.3 (35.1)	63.6 (28.8)		75.7 (34.3)	61.3 (27.8)		75.1 (34.1)	60.7 (27.5)		68.2 (30.9)			170 (51.8)
180 (54.9)	71.3 (32.3)	58.4 (26.5)		69.6 (31.6)	56.3 (25.5)		69.0 (31.3)	55.5 (25.2)		62.9 (28.5)	53.4 (24.2)		180 (54.9)
190 (57.9)	65.8 (29.8)	53.7 (24.4)		64.3 (29.2)	51.7 (23.5)		63.8 (28.9)	51.0 (23.1)		58.1 (26.4)	49.0 (22.2)		190 (57.9)
200 (61.0)		49.6 (22.5)		59.6 (27.0)	47.6 (21.6)		58.9 (26.7)	46.8 (21.2)		53.7 (24.4)	44.9 (20.4)		200 (61.0)
210 (64.0)		45.8 (20.8)	36.3 (16.5)	55.3 (25.1)	43.8 (19.9)		54.6 (24.8)	43.2 (19.6)		49.3 (22.4)	41.2 (18.7)		210 (64.0)
220 (67.1)		42.5 (19.3)	33.4 (15.1)		40.6 (18.4)	31.2 (14.2)	50.8 (23.0)	39.9 (18.1)		45.4 (20.6)	37.9 (17.2)		220 (67.1)
230 (70.1)			31.0 (14.1)		37.6 (17.1)	28.8 (13.1)	47.3 (21.5)	36.9 (16.7)	27.9 (12.7)	42.0 (19.1)	34.9 (15.8)		230 (70.1)
240 (73.2)			28.5 (12.9)		34.9 (15.8)	26.4 (12.0)		34.1 (15.5)	25.5 (11.6)	38.9 (17.6)	32.2 (14.6)	23.3 (10.6)	240 (73.2)
250 (76.2)			26.2 (11.9)			24.3 (11.0)		31.5 (14.3)	23.4 (10.6)		29.8 (13.5)	21.2 (9.6)	250 (76.2)
260 (79.2)						22.3 (10.1)		29.3 (13.3)	21.4 (9.7)		27.4 (12.4)	19.2 (8.7)	260 (79.2)
270 (82.3)						20.5 (9.3)			19.6 (8.9)		25.3 (11.5)	17.4 (7.9)	270 (82.3)
280 (85.3)									17.9 (8.1)		23.4 (10.6)	15.7 (7.1)	280 (85.3)
290 (88.4)									16.3 (7.4)			14.3 (6.5)	290 (88.4)
300 (91.4)												12.8 (5.8)	300 (91.4)
310 (94.5)												11.7 (5.3)	310 (94.5)

This material is supplied for reference use only. Operator must refer to in-cab Crane Rating Manual and Operator's Manual to determine allowable crane lifting capacities and assembly and operating procedures.

196.8 ft (54.0m) Luffing Boom + Luffing Jib – 360° Rotation
ABCD+AB [396,900 lb + 136,686 lb (180mt + 62 mt)] Counterweight
[All capacities are listed in kips (mt)]

Load Radius ft (m)	Luffing Jib Length & Boom Angle															Load Radius ft (m)	
	78.7 ft (24.0m)			98.4 ft (30.0m)			118.1 ft (36.0m)			137.8 ft (42.0m)			157.5 ft (48.0m)				
	86°	75°	65°	86°	75°	65°	86°	75°	65°	86°	75°	65°	86°	75°	65°		
60 (18.3)	234.7 (106.5)			216.6 (98.2)													60 (18.3)
70 (21.3)	211.7 (96.0)			205.3 (93.1)			190.1 (86.2)										70 (21.3)
80 (24.4)	177.4 (80.5)			180.9 (82.1)			179.3 (81.3)				167.7 (76.1)			154.8 (70.2)			80 (24.4)
90 (27.4)	151.1 (68.5)			155.1 (70.4)			157.7 (71.5)				157.6 (71.5)			148.4 (67.3)			90 (27.4)
100 (30.5)				135.2 (61.3)			137.9 (62.6)				139.7 (63.4)			140.4 (63.7)			100 (30.5)
110 (33.5)		122.1 (55.4)		119.3 (54.1)			122.3 (55.5)				124.2 (56.3)			125.6 (57.0)			110 (33.5)
120 (36.6)		108.7 (49.3)			107.7 (48.9)		109.5 (49.7)				111.5 (50.6)			112.9 (51.2)			120 (36.6)
130 (39.6)		97.8 (44.4)			96.9 (44.0)		98.8 (44.8)	95.3 (43.2)			101.3 (45.9)			102.6 (46.5)			130 (39.6)
140 (42.7)					87.5 (39.7)			86.0 (39.0)			92.3 (41.9)	84.3 (38.2)		93.9 (42.6)			140 (42.7)
150 (45.7)			67.5 (30.6)		79.8 (36.2)			78.5 (35.6)			84.8 (38.5)	76.7 (34.8)		86.6 (39.3)	75.1 (34.1)		150 (45.7)
160 (48.8)			61.5 (27.9)			60.1 (27.3)		71.6 (32.5)				70.0 (31.8)		80.3 (36.4)	68.5 (31.1)		160 (48.8)
170 (51.8)						55.1 (25.0)						64.2 (29.1)		74.8 (33.9)	62.7 (28.4)		170 (51.8)
180 (54.9)						50.6 (23.0)			48.8 (22.1)			59.0 (26.8)			57.7 (26.2)		180 (54.9)
190 (57.9)								45.0 (20.4)				54.5 (24.7)	43.0 (19.5)		53.2 (24.1)		190 (57.9)
200 (61.0)								41.4 (18.8)					39.7 (18.0)		49.1 (22.3)	37.9 (17.2)	200 (61.0)
210 (64.0)													36.5 (16.6)		45.4 (20.6)	34.8 (15.8)	210 (64.0)
220 (67.1)													33.8 (15.3)			32.1 (14.6)	220 (67.1)
230 (70.1)																29.6 (13.4)	230 (70.1)
240 (73.2)																27.2 (12.3)	240 (73.2)

-- Load chart continues on the next page --

This material is supplied for reference use only. Operator must refer to in-cab Crane Rating Manual and Operator's Manual to determine allowable crane lifting capacities and assembly and operating procedures.

196.8 ft (54.0m) Luffing Boom + Luffing Jib – 360° Rotation ABCD+AB [396,900 lb + 136,686 lb (180mt + 62 mt)] Counterweight [All capacities are listed in kips (mt)]												
Load Radius ft (m)	Luffing Jib Length & Boom Angle											Load Radius ft (m)
	177.2 ft (54.0m)			196.8 ft (60.0m)			216.5 ft (66.0m)			236.2 ft (72.0m)		
	86°	75°	65°	86°	75°	65°	86°	75°	65°	86°	75°	
90 (27.4)	137.9 (62.6)			126.7 (57.5)								90 (27.4)
100 (30.5)	132.7 (60.2)			122.3 (55.5)			111.5 (50.6)					100 (30.5)
110 (33.5)	125.6 (57.0)			117.7 (53.4)			106.2 (48.2)			96.0 (43.5)		110 (33.5)
120 (36.6)	114.0 (51.7)			112.7 (51.1)			100.7 (45.7)			90.9 (41.2)		120 (36.6)
130 (39.6)	103.6 (47.0)			104.5 (47.4)			95.2 (43.2)			85.7 (38.9)		130 (39.6)
140 (42.7)	95.0 (43.1)			95.9 (43.5)			89.8 (40.7)			80.3 (36.4)		140 (42.7)
150 (45.7)	87.6 (39.7)			88.6 (40.2)			84.6 (38.4)			75.1 (34.1)		150 (45.7)
160 (48.8)	81.3 (36.9)	66.7 (30.3)		82.2 (37.3)			79.4 (36.0)			69.9 (31.7)		160 (48.8)
170 (51.8)	75.7 (34.3)	60.9 (27.6)		76.0 (34.5)	59.6 (27.0)		74.3 (33.7)			65.0 (29.5)		170 (51.8)
180 (54.9)	70.8 (32.1)	56.0 (25.4)		69.7 (31.6)	54.6 (24.8)		68.6 (31.1)	53.1 (24.1)		60.4 (27.4)		180 (54.9)
190 (57.9)	65.4 (29.7)	51.4 (23.3)		64.5 (29.3)	50.1 (22.7)		63.4 (28.8)	48.6 (22.0)		56.1 (25.4)	46.6 (21.1)	190 (57.9)
200 (61.0)		47.2 (21.4)		59.8 (27.1)	45.9 (20.8)		58.5 (26.5)	44.6 (20.2)		51.8 (23.5)	42.7 (19.4)	200 (61.0)
210 (64.0)		43.8 (19.9)	32.8 (14.9)	55.3 (25.1)	42.5 (19.3)		54.4 (24.7)	40.9 (18.6)		48.0 (21.8)	39.0 (17.7)	210 (64.0)
220 (67.1)		40.5 (18.4)	30.2 (13.7)		39.2 (17.8)		50.4 (22.9)	37.7 (17.1)		44.4 (20.1)	36.0 (16.3)	220 (67.1)
230 (70.1)		37.6 (17.1)	27.7 (12.6)		36.2 (16.4)	26.1 (11.8)	47.0 (21.3)	34.9 (15.8)		41.1 (18.6)	32.9 (14.9)	230 (70.1)
240 (73.2)			25.4 (11.5)		33.5 (15.2)	23.9 (10.8)		32.2 (14.6)	22.3 (10.1)	37.9 (17.2)	30.2 (13.7)	240 (73.2)
250 (76.2)			23.4 (10.6)		31.1 (14.1)	21.9 (9.9)		29.8 (13.5)	20.3 (9.2)	35.3 (16.0)	27.8 (12.6)	250 (76.2)
260 (79.2)			21.5 (9.8)			20.0 (9.1)		27.5 (12.5)	18.4 (8.3)		25.6 (11.6)	260 (79.2)
270 (82.3)						18.1 (8.2)		25.5 (11.6)	16.8 (7.6)		23.6 (10.7)	270 (82.3)
280 (85.3)						16.6 (7.5)			15.1 (6.8)		21.9 (9.9)	280 (85.3)
290 (88.4)									13.7 (6.2)			290 (88.4)
300 (91.4)									12.3 (5.6)			300 (91.4)

This material is supplied for reference use only. Operator must refer to in-cab Crane Rating Manual and Operator's Manual to determine allowable crane lifting capacities and assembly and operating procedures.

216.5 ft (66.0m) Luffing Boom + Luffing Jib – 360° Rotation ABCD+AB [396,900 lb + 136,686 lb (180mt + 62 mt)] Counterweight [All capacities are listed in kips (mt)]													
Load Radius ft (m)	Luffing Jib Length & Boom Angle												Load Radius ft (m)
	98.4 ft (30.0m)			118.1 ft (36.0m)			137.8 ft (42.0m)			157.5 ft (48.0m)			
	86°	75°	65°	86°	75°	65°	86°	75°	65°	86°	75°	65°	
60 (18.3)	182.0 (82.6)												60 (18.3)
70 (21.3)	172.5 (78.2)			159.5 (72.3)									70 (21.3)
80 (24.4)	160.5 (72.8)			151.9 (68.9)			140.9 (63.9)			130.4 (59.1)			80 (24.4)
90 (27.4)	138.1 (62.6)			139.4 (63.2)			134.6 (61.1)			124.8 (56.6)			90 (27.4)
100 (30.5)	120.3 (54.6)			122.3 (55.5)			123.4 (56.0)			119.4 (54.2)			100 (30.5)
110 (33.5)	106.2 (48.2)			108.6 (49.3)			110.1 (49.9)			109.6 (49.7)			110 (33.5)
120 (36.6)		103.0 (46.7)		97.3 (44.1)			98.8 (44.8)			97.5 (44.2)			120 (36.6)
130 (39.6)		92.4 (41.9)		88.1 (40.0)	90.8 (41.2)		89.7 (40.7)			87.3 (39.6)			130 (39.6)
140 (42.7)		83.7 (38.0)			82.1 (37.2)		81.9 (37.1)	80.3 (36.4)		78.6 (35.7)			140 (42.7)
150 (45.7)		76.0 (34.5)			74.6 (33.8)		75.4 (34.2)	72.9 (33.1)		70.9 (32.2)	71.4 (32.4)		150 (45.7)
160 (48.8)		69.4 (31.5)			68.3 (31.0)			66.5 (30.2)		64.2 (29.1)	65.1 (29.5)		160 (48.8)
170 (51.8)			49.1 (22.3)		62.5 (28.3)			60.9 (27.6)		58.1 (26.4)	59.6 (27.0)		170 (51.8)
180 (54.9)			45.1 (20.5)		57.3 (26.0)			55.9 (25.4)			54.5 (24.7)		180 (54.9)
190 (57.9)			41.3 (18.7)			39.7 (18.0)		51.7 (23.5)			50.3 (22.8)		190 (57.9)
200 (61.0)						36.4 (16.5)				34.6 (15.7)	46.4 (21.0)		200 (61.0)
210 (64.0)						33.5 (15.2)				31.7 (14.4)	42.9 (19.5)	30.1 (13.7)	210 (64.0)
220 (67.1)										29.2 (13.2)		27.6 (12.5)	220 (67.1)
230 (70.1)										26.8 (12.2)		25.2 (11.4)	230 (70.1)
240 (73.2)												23.3 (10.6)	240 (73.2)
250 (76.2)												21.2 (9.6)	250 (76.2)

--Load chart continues on the next page--

This material is supplied for reference use only. Operator must refer to in-cab Crane Rating Manual and Operator's Manual to determine allowable crane lifting capacities and assembly and operating procedures.

216.5 ft (66.0m) Luffing Boom + Luffing Jib – 360° Rotation ABCD+AB [396,900 lb + 136,686 lb (180mt + 62 mt)] Counterweight [All capacities are listed in kips (mt)]											
Load Radius ft (m)	Luffing Jib Length & Boom Angle										Load Radius ft (m)
	177.2 ft (54.0m)			196.8 ft (60.0m)			216.5 ft (66.0m)		236.2 ft (72.0m)		
	86°	75°	65°	86°	75°	65°	86°	75°	86°	75°	
90 (27.4)	116.1 (52.7)										90 (27.4)
100 (30.5)	111.7 (50.7)			103.2 (46.8)			95.8 (43.5)				100 (30.5)
110 (33.5)	107.2 (48.6)			99.5 (45.1)			92.2 (41.8)		83.9 (38.1)		110 (33.5)
120 (36.6)	100.5 (45.6)			95.6 (43.4)			88.0 (39.9)		79.9 (36.2)		120 (36.6)
130 (39.6)	91.6 (41.5)			91.5 (41.5)			83.6 (37.9)		76.1 (34.5)		130 (39.6)
140 (42.7)	83.9 (38.1)			84.5 (38.3)			79.4 (36.0)		71.8 (32.6)		140 (42.7)
150 (45.7)	77.4 (35.1)			78.1 (35.4)			75.3 (34.2)		67.8 (30.8)		150 (45.7)
160 (48.8)	71.8 (32.6)	63.1 (28.6)		72.8 (33.0)			71.2 (32.3)		63.8 (28.9)		160 (48.8)
170 (51.8)	67.0 (30.4)	57.8 (26.2)		67.9 (30.8)	55.6 (25.2)		67.4 (30.6)		59.9 (27.2)		170 (51.8)
180 (54.9)	62.7 (28.4)	52.7 (23.9)		63.6 (28.8)	50.7 (23.0)		63.8 (28.9)	49.9 (22.6)	56.0 (25.4)		180 (54.9)
190 (57.9)	58.9 (26.7)	48.6 (22.0)		60.0 (27.2)	46.6 (21.1)		60.2 (27.3)	45.7 (20.7)	52.3 (23.7)	43.7 (19.8)	190 (57.9)
200 (61.0)		44.6 (20.2)		56.7 (25.7)	42.6 (19.3)		56.7 (25.7)	42.0 (19.1)	48.9 (22.2)	40.0 (18.1)	200 (61.0)
210 (64.0)		41.2 (18.7)		53.5 (24.3)	39.2 (17.8)		53.5 (24.3)	38.5 (17.5)	45.6 (20.7)	36.5 (16.6)	210 (64.0)
220 (67.1)		38.1 (17.3)	25.5 (11.6)		36.2 (16.4)		50.5 (22.9)	35.5 (16.1)	42.6 (19.3)	33.4 (15.1)	220 (67.1)
230 (70.1)		35.1 (15.9)	23.2 (10.5)		33.4 (15.1)		47.2 (21.4)	32.7 (14.8)	39.5 (17.9)	30.7 (13.9)	230 (70.1)
240 (73.2)			21.2 (9.6)		30.8 (14.0)	19.0 (8.6)		30.1 (13.7)	36.7 (16.6)	28.1 (12.7)	240 (73.2)
250 (76.2)			19.4 (8.8)		28.4 (12.9)	17.2 (7.8)		27.8 (12.6)	34.2 (15.5)	25.8 (11.7)	250 (76.2)
260 (79.2)			17.6 (8.0)			15.4 (7.0)		25.6 (11.6)		23.6 (10.7)	260 (79.2)
270 (82.3)			15.9 (7.2)			13.9 (6.3)		23.6 (10.7)		21.8 (9.9)	270 (82.3)
280 (85.3)						12.4 (5.6)				19.9 (9.0)	280 (85.3)
290 (88.4)										18.3 (8.3)	290 (88.4)

This material is supplied for reference use only. Operator must refer to in-cab Crane Rating Manual and Operator's Manual to determine allowable crane lifting capacities and assembly and operating procedures.

236.2 ft (72.0m) Luffing Boom + Luffing Jib – 360° Rotation ABCD+AB [396,900 lb + 136,686 lb (180mt + 62 mt)] Counterweight [All capacities are listed in kips (mt)]													
Load Radius ft (m)	Luffing Jib Length & Boom Angle												Load Radius ft (m)
	118.1 ft (36.0m)			137.8 ft (42.0m)			157.5 ft (48.0m)			177.2 ft (54.0m)			
	86°	75°	65°	86°	75°	65°	86°	75°	65°	86°	75°	65°	
70 (21.3)	135.3 (61.4)												70 (21.3)
80 (24.4)	128.9 (58.5)			119.2 (54.1)			110.3 (50.0)						80 (24.4)
90 (27.4)	122.1 (55.4)			113.9 (51.7)			105.7 (47.9)			98.6 (44.7)			90 (27.4)
100 (30.5)	110.1 (49.9)			107.9 (48.9)			101.1 (45.9)			94.6 (42.9)			100 (30.5)
110 (33.5)	97.6 (44.3)			98.6 (44.7)			96.5 (43.8)			90.7 (41.1)			110 (33.5)
120 (36.6)	87.8 (39.8)			88.8 (40.3)			89.4 (40.6)			86.7 (39.3)			120 (36.6)
130 (39.6)	79.2 (35.9)			80.4 (36.5)			81.3 (36.9)			81.8 (37.1)			130 (39.6)
140 (42.7)		80.6 (36.6)		73.7 (33.4)			74.6 (33.8)			75.1 (34.1)			140 (42.7)
150 (45.7)		73.1 (33.2)		67.7 (30.7)	72.0 (32.7)		68.8 (31.2)			69.4 (31.5)			150 (45.7)
160 (48.8)		66.8 (30.3)			65.7 (29.8)		63.7 (28.9)	63.5 (28.8)		64.4 (29.2)			160 (48.8)
170 (51.8)		61.3 (27.8)			60.2 (27.3)		59.5 (27.0)	58.0 (26.3)		60.2 (27.3)	56.3 (25.5)		170 (51.8)
180 (54.9)		56.4 (25.6)			55.4 (25.1)			53.1 (24.1)		56.3 (25.5)	51.5 (23.4)		180 (54.9)
190 (57.9)			37.7 (17.1)		51.0 (23.1)			49.0 (22.2)		53.0 (24.0)	47.2 (21.4)		190 (57.9)
200 (61.0)			34.7 (15.7)		47.0 (21.3)			45.1 (20.5)			43.4 (19.7)		200 (61.0)
210 (64.0)			31.9 (14.5)			30.6 (13.9)		41.8 (19.0)			40.1 (18.2)		210 (64.0)
220 (67.1)			29.3 (13.3)			28.1 (12.7)		38.6 (17.5)	25.8 (11.7)		37.0 (16.8)		220 (67.1)
230 (70.1)						25.9 (11.7)			23.7 (10.8)		34.2 (15.5)	21.5 (9.8)	230 (70.1)
240 (73.2)						23.6 (10.7)			21.5 (9.8)		31.6 (14.3)	19.6 (8.9)	240 (73.2)
250 (76.2)									19.7 (8.9)			17.7 (8.0)	250 (76.2)
260 (79.2)									18.0 (8.2)			16.0 (7.3)	260 (79.2)
270 (82.3)												14.5 (6.6)	270 (82.3)
280 (85.3)												13.1 (5.9)	280 (85.3)

-- Load chart continues on the next page --

This material is supplied for reference use only. Operator must refer to in-cab Crane Rating Manual and Operator's Manual to determine allowable crane lifting capacities and assembly and operating procedures.

236.2 ft (72.0m) Luffing Boom + Luffing Jib – 360° Rotation ABCD+AB [396,900 lb + 136,686 lb (180mt + 62 mt)] Counterweight [All capacities are listed in kips (mt)]							
Load Radius ft (m)	Luffing Jib Length & Boom Angle						Load Radius ft (m)
	196.8 ft (60.0m)		216.5 ft (66.0m)		236.2 ft (72.0m)		
	86°	75°	86°	75°	86°	75°	
100 (30.5)	87.2 (39.6)		81.2 (36.8)				100 (30.5)
110 (33.5)	83.8 (38.0)		78.2 (35.5)		71.5 (32.4)		110 (33.5)
120 (36.6)	80.4 (36.5)		74.7 (33.9)		68.2 (30.9)		120 (36.6)
130 (39.6)	77.3 (35.1)		71.2 (32.3)		65.0 (29.5)		130 (39.6)
140 (42.7)	74.1 (33.6)		67.8 (30.8)		61.8 (28.0)		140 (42.7)
150 (45.7)	69.6 (31.6)		64.4 (29.2)		58.6 (26.6)		150 (45.7)
160 (48.8)	64.9 (29.4)		61.4 (27.9)		55.6 (25.2)		160 (48.8)
170 (51.8)	60.6 (27.5)		58.3 (26.4)		52.6 (23.9)		170 (51.8)
180 (54.9)	56.8 (25.8)	50.0 (22.7)	55.4 (25.1)		49.6 (22.5)		180 (54.9)
190 (57.9)	53.6 (24.3)	45.9 (20.8)	52.7 (23.9)	44.4 (20.1)	46.8 (21.2)		190 (57.9)
200 (61.0)	50.6 (23.0)	42.3 (19.2)	50.1 (22.7)	40.7 (18.5)	44.1 (20.0)	38.7 (17.6)	200 (61.0)
210 (64.0)	48.0 (21.8)	38.7 (17.6)	47.6 (21.6)	37.4 (17.0)	41.6 (18.9)	35.2 (16.0)	210 (64.0)
220 (67.1)		35.7 (16.2)	45.4 (20.6)	34.3 (15.6)	39.0 (17.7)	32.3 (14.7)	220 (67.1)
230 (70.1)		32.9 (14.9)	43.3 (19.6)	31.6 (14.3)	36.7 (16.6)	29.6 (13.4)	230 (70.1)
240 (73.2)		30.4 (13.8)		29.0 (13.2)	34.4 (15.6)	27.1 (12.3)	240 (73.2)
250 (76.2)		28.0 (12.7)		26.7 (12.1)	32.2 (14.6)	24.7 (11.2)	250 (76.2)
260 (79.2)		25.8 (11.7)		24.5 (11.1)		22.7 (10.3)	260 (79.2)
270 (82.3)				22.7 (10.3)		20.7 (9.4)	270 (82.3)
280 (85.3)				20.7 (9.4)		18.9 (8.6)	280 (85.3)
290 (88.4)						17.2 (7.8)	290 (88.4)

This material is supplied for reference use only. Operator must refer to in-cab Crane Rating Manual and Operator's Manual to determine allowable crane lifting capacities and assembly and operating procedures.

This Page Intentionally Blank

This Page Intentionally Blank

This Page Intentionally Blank

Link-Belt Construction Equipment Company Lexington, Kentucky www.linkbelt.com

®Link-Belt is a registered trademark. Copyright 2010. We are constantly improving our products and therefore reserve the right to change designs and specifications.