

**PERFORMANCE
INNOVATION
SELECTION**



**RELIABILITY
WARRANTY
VISIBILITY**

XR2034

Capacity 20,000 lbs
Lift Height 34'
Forward Reach 16' 7"
Frame Leveling L/R 8°
Weight 40,150 lbs
Engine Perkins 130 hp
Fuel Capacity 72 gal
Tires (Standard) Foam Filled
17.5 x 25 E3
GPM 49
PSL 4,000
Hydraulic Oil Capacity 58 gal
Length to fork face 21' 10"
Width 102"
Height 8' 11"
Wheel Base 147"
Ground Clearance 15"
Turning Radius 15' 10"
Warranty Xtreme 10-5-2



10-5-2 WARRANTY

10 YEARS OR 10,000 HOURS
FRAME & CHASSIS WELDMENT

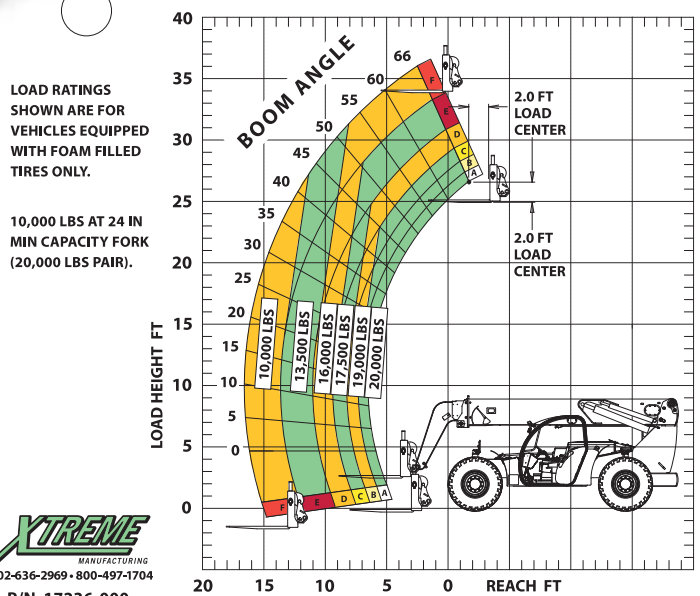
5 YEARS OR 5,000 HOURS
BOOM WELDMENT & ROLLERS

2 YEARS OR 2,000 HOURS
ENGINE, ELECTRICAL, TRANSMISSION, DRIVE
AXLES & HYDRAULIC COMPONENTS

1415 W. Bonanza Rd. Las Vegas, NV
(702) 636-2969 (800) 497-1704

www.xtremefc.com

XR2034 LOAD CHART - STANDARD CARRIAGE



**PERFORMANCE
INNOVATION
SELECTION**



**RELIABILITY
WARRANTY
VISIBILITY**



Long-Life Rollers



Boom Lift Point



360° Visibility



Operator Controls

The **XTREME** Difference



- 360° Visibility
- Long Life Boom Rollers
- Suspension Seat
- Easy Service Access
- Protected Tilt & Extend Cylinders
- Steel Hydraulic & Fuel Tanks
- Long Life Lexan Labels
- Fiberglass Hoods
- Heavy Duty Boom Chains
- Suspended Pedals
- Electrical Ring Terminals
- Wider Outrigger Stance
- Large Capacity Fuel Tanks
- Trunnion Mounted Sway Cylinders
- Melonite Pins
- Rear Axle Stabilization (RAS)
- Center Mounted Power Train
- Standard Auxiliary Hydraulics
- Solid Steel Plate Chassis
- Steel Dash
- Ductile Steel Manifold
- Easy Cab Mounted Grab Handles
- Reliable Perkins Engine
- Master Disconnect Switch
- Boom Lift Point
- Axle Mounted Outriggers
- Manual Lowering Valve (Cylinders)
- Large Cross Section Boom
- Easy Tie Downs
- "Y" Frame Sway Handle
- Heavy Duty Pre-Cleaner
- Additional High Pressure Hyd Filter
- Direct Engine/Trans Connection
- Individual Gauges and Switches

Attachments



- Standard Fixed Carriage (48", 60", 72", 96")
- Fork Positioning Carriage (48", 72", 96")
- Swing Carriage
- Tilt Carriage
- Personnel Platform
- Sling Mount
- Bucket (1.0 - 2.0 cu-yd)
- Truss (2 ft, 3 ft, 12 ft, 15 ft)
- Telescopic Truss (Slide on)
- Pole Grapple Carriage
- Grapple Bucket
- Concrete Hopper

Accessories / Options



- Enclosed Cab w/Heat
- Enclosed Cab w/Heat & A/C
- Boom Work Light Package
- Flashing Amber Strobe
- Pintle Hook
- Tail/Turn/Brake Lights
- LED Lighting
- Steel Fenders
- 5th Wheel Attachment
- Boom Maintenance Stand
- Battery Blanket
- Limited Slip Axle(s)
- Locking Fuel Cap
- Soft Cab
- Additional Lift Points
- Swivel Lifting Hook
- Auxiliary Cab Heater
- Dual Batteries
- Clear Glass
- Padded Arm Rest
- Two Wheel Rear Steer