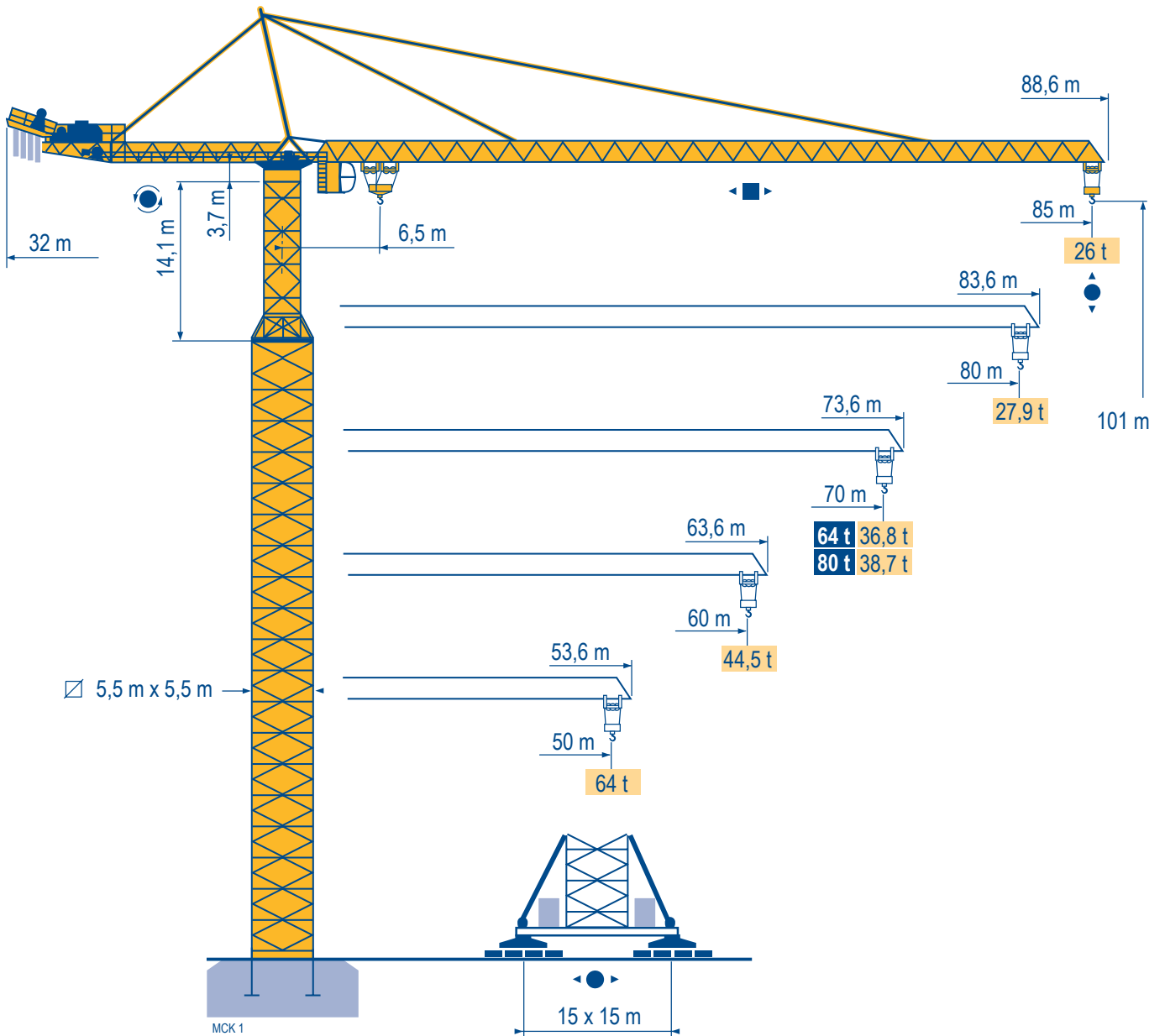


MD 3200



Mat / Réactions \square 5,5 m x 5,5 m

Maste /
Eckdrücke

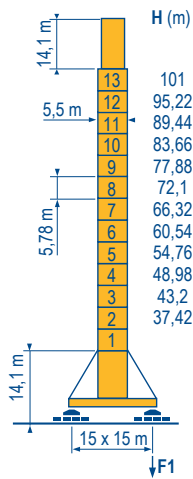
Masts /
Reactions

Mástil /
Reacciones

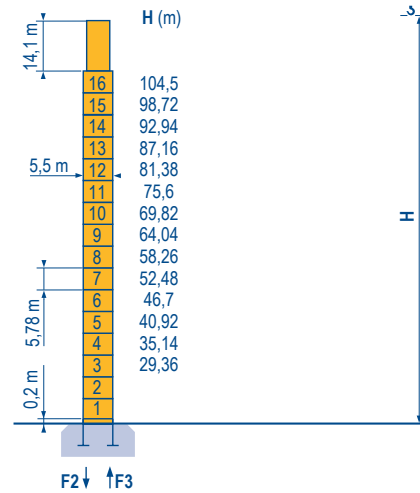
Torre / Reazioni

Tramo /
Reações

MCK 1



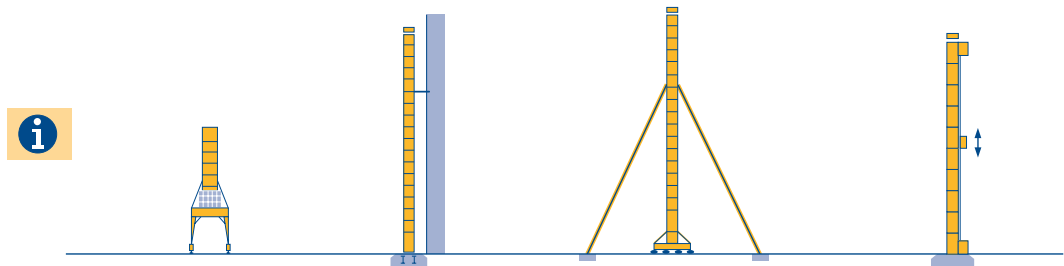
KA 1050	
F1	



PA 1050	
F2	
F3	

Autres implantations
Aufstellmöglichkeiten
Mounting possibilities
Otras implantaciones
Altre postazioni
Outras implantações

MCK 1



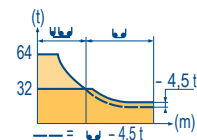
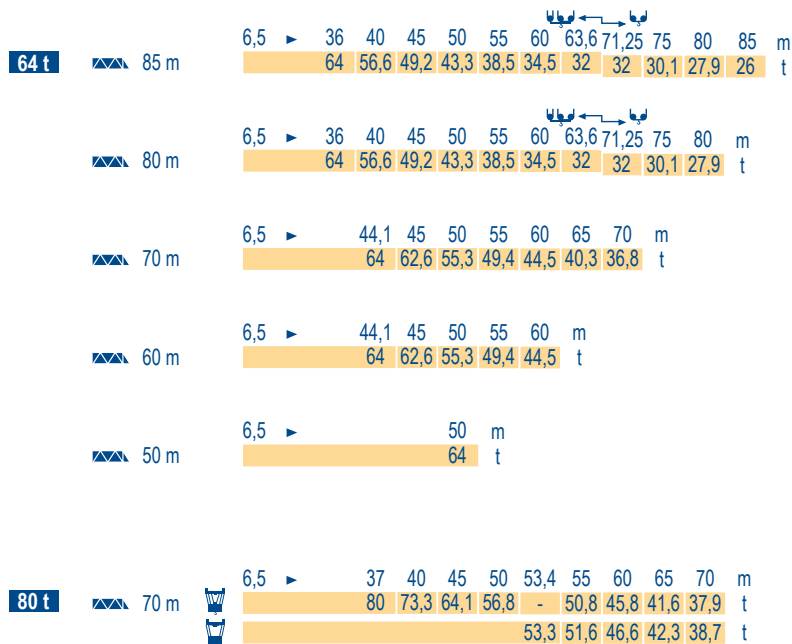
MD 3200

POTAIN

	F	D	GB	E	I	P
	Réactions en service	Reaktionskräfte in Betrieb	Reactions in service	Reacciones en servicio	Reazioni in servizio	Reacções em serviço
	Réactions hors service	Reaktionskräfte außer Betrieb	Reactions out of service	Reacciones fuera de servicio	Reazioni fuori servizio	Reacções fora de serviço
	A vide sans lest (ni train de transport) avec flèche et hauteur maximum.	Ohne Last, Ballast (und Transportachse), mit Maximalausleger und Maximalhöhe.	Without load, ballast (or transport axles), with maximum jib and maximum height.	Sin carga, sin lastre, (ni tren de transporte), flecha y altura máxima.	A vuoto, senza zavorra (ne assali di trasporto) con braccio massimo e altezza massima.	Sem carga (nem trem de transporte)- sem lastro com lança e altura máximas.
	Nous consulter	Auf Anfrage	Consult us	Consultarnos	Consultateci	Consultar-nos

Courbes de charges
Lastkurven
Load diagrams
Curvas de cargas
Curve di carico
Curva de cargas

MCK 1



Mécanismes
Antriebe
Mechanisms
Mecanismos
Meccanismi
Mecanismos

MCK 2

64 t											ch - PS	kW							
▲ ▼	500 LCC 160	m/min t	60	→	82	→	120	30	→	41	→	60	500	370	610 m				
	800 LCC 160	m/min t	92	→	126	→	160	46	→	63	→	80	785	560	610 m				
◀ ▶	25 DVF 33	m/min	0 → 25 (64 t) - 0 → 50 (32 t)									25	18,5						
⊙	RVF	tr/min U/min rpm	0 → 0,6									6x 25	6 x 18						
80 t											ch - PS	kW							
▲ ▼	250 LCC 133	m/min t	15	→	18	→	22,5	→	30	10	→	12	→	15	→	20	250	180	610 m
			53,3		39,8		26,5		13,3	80		60		40		20			
◀ ▶	25 DVF 33	m/min	0 → 50									25	18,5						
⊙	RVF	tr/min U/min rpm	0 → 0,6									6x 15	6 x 11						
100 t - 120 t - 160 t			i																
KA 1050 ▲ ▼	RTVF	m/min	0 → 17									16 x 7	16 x 5,2						
CEI 38			IEC 38			kVA													
400 V (+6% -10%) 50 Hz						250 LCC : 315 kVA 500 LCC : 515 kVA 800 LCC : 800 kVA													

MD 3200



F	D	GB	E	I	P
▲ ▼	Heben	Hoisting	Elevación	Sollevamento	Elevação
◀ ▶	Katzfahren	Trolleying	Distribución	Distribuzione	Distribuição
⊙	Schwenken	Slewing	Orientación	Rotazione	Rotação
◀ ▶	Kranfahren	Travelling	Traslación	Traslazione	Translação



Document commercial non contractuel. Pour toute information technique se référer à la notice correspondante.

Unverbindliches Vertriebsdokument. Für technische Informationen, siehe die entsprechenden Anweisungen.

This commercial document is not legally binding. For any technical information, please refer to the corresponding instructions.

Documento commercial no contractuel. Para cualquier información técnica, ver la noticia correspondiente.

Documento commerciale non vincolante, per tutte le informazioni tecniche fare riferimento al catalogo istruzioni.

Documento comercial não contratual. Para qualquer informação técnica complementar consultar as respectivas instruções.



Manitowoc Crane Group



18, rue de Charbonnières - B.R.173
69132 ECULLY Cedex - France

Tél. : +33 (0) 4 72 18 20 20

Fax. : +33 (0) 4 72 18 20 00

www.manitowoccrane.com

Americas

Tel : +1 888 479 7278

Tel : +1 717 593 2000

Europe - Middle East - Africa

Tel : +33 (0) 4 72 81 50 00

Tel : +44 (0) 191 522 2000

Asia - Pacific

Tel : +65 6264 1188

Fax : +65 6862 4040

www.manitowoccrane.com

MD 3200

Réf. 2004 52 MCK 3

Copyright.Reproduction interdite © POTAIN 2004