

Van Ladder Model 3424

FEATURES

24VDC battery bank allows operation of unit without vehicle running.

Independent motors for all functions optimize energy efficiency

Charge system replenishes battery bank when vehicle is running (Optional 110V overnight charger also available)

Durable light weight design for optimal payload and fuel efficiency

Typical installations do not reduce cargo space

Automatic bucket leveling system, utilizing linear actuator

360 degree continuous rotation

Ground Controls hardwired with 30ft coil cord for remote maneuvering

Integrated storage rack for extension ladders

Typical installations require no outriggers

Quality finished components for superior corrosion protection

Environmentally sealed electronic components

Ground controls include bucket override function and emergency stop switch

Emergency Stop switch located in bucket stops functions from all control locations

Counter-balance valve on hydraulic lift cylinder protects against hose leaks or power unit failure

Non-skid surfaces on all rungs and platforms

Fall arrest anchorage point for operator in bucket

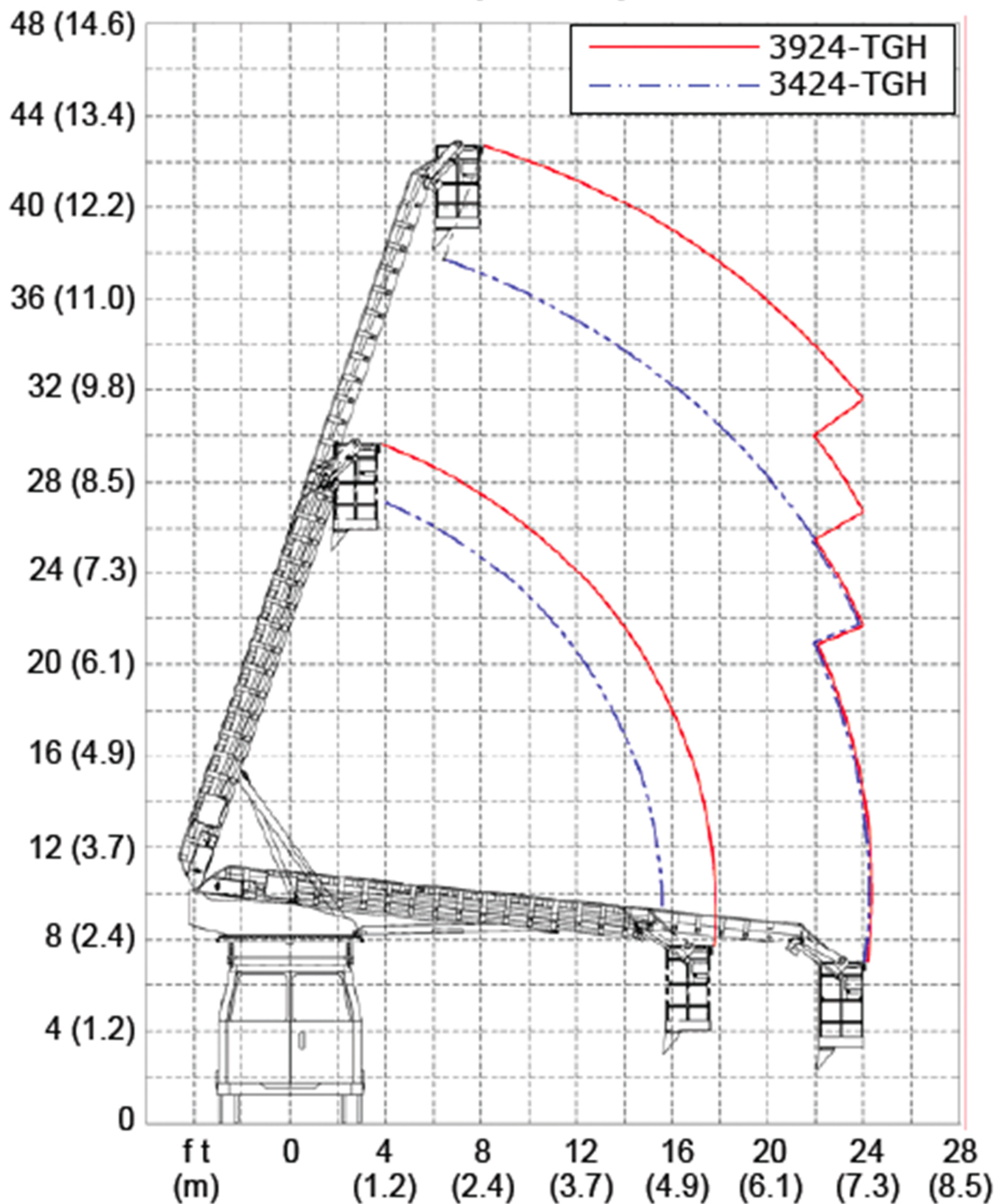
Boom and bucket stow lock protects against movement during travel

Meets or exceeds current ANSI A92.2 and CAN/CSA C225-00 standards.

Can be transferred easily to another vehicle in the future

Optional accessories include: 110V power outlet at bucket, bucket tool box, bucket forks, lifting hook, fluorescent light bulb holder, dual LED strobe lights (class 1), and more

REACH DIAGRAM



Models

Working Height (typical) a

Height to bottom of bucket a

Horizontal reach

Stowed travel height a

Bucket Capacity

Approx. unit weight c

360 deg. continuous rotation

Front bumper bucket entry

Ground level bucket entry

Max. acceptable ground slope

Minimum Vehicle Requirements:

Van

Truck

3924-TGH

45ft. (13.7m)

39ft. (11.9m)

24ft. (7.3m)

11.3ft. (3.45m)

350lb (159kg)^b

1200lb (544kg)

Yes

Yes

Yes

5 deg.

1 ton

1 ton ext. (8ft box)

3424-TGH

40ft. (12.2m)

34ft. (10.4m)

24ft. (7.3m)

11.3ft (3.45m)

350lb (159kg)^b

1170lb (531kg)

Yes

Yes

Yes

5 deg.

1 ton

1 ton (8ft box)

a Based on 80° Cab Height

b 300 lb capacity when requiring compliance with CAN/CSA C225-M88

c Weight does not include installation components which vary by vehicle type.