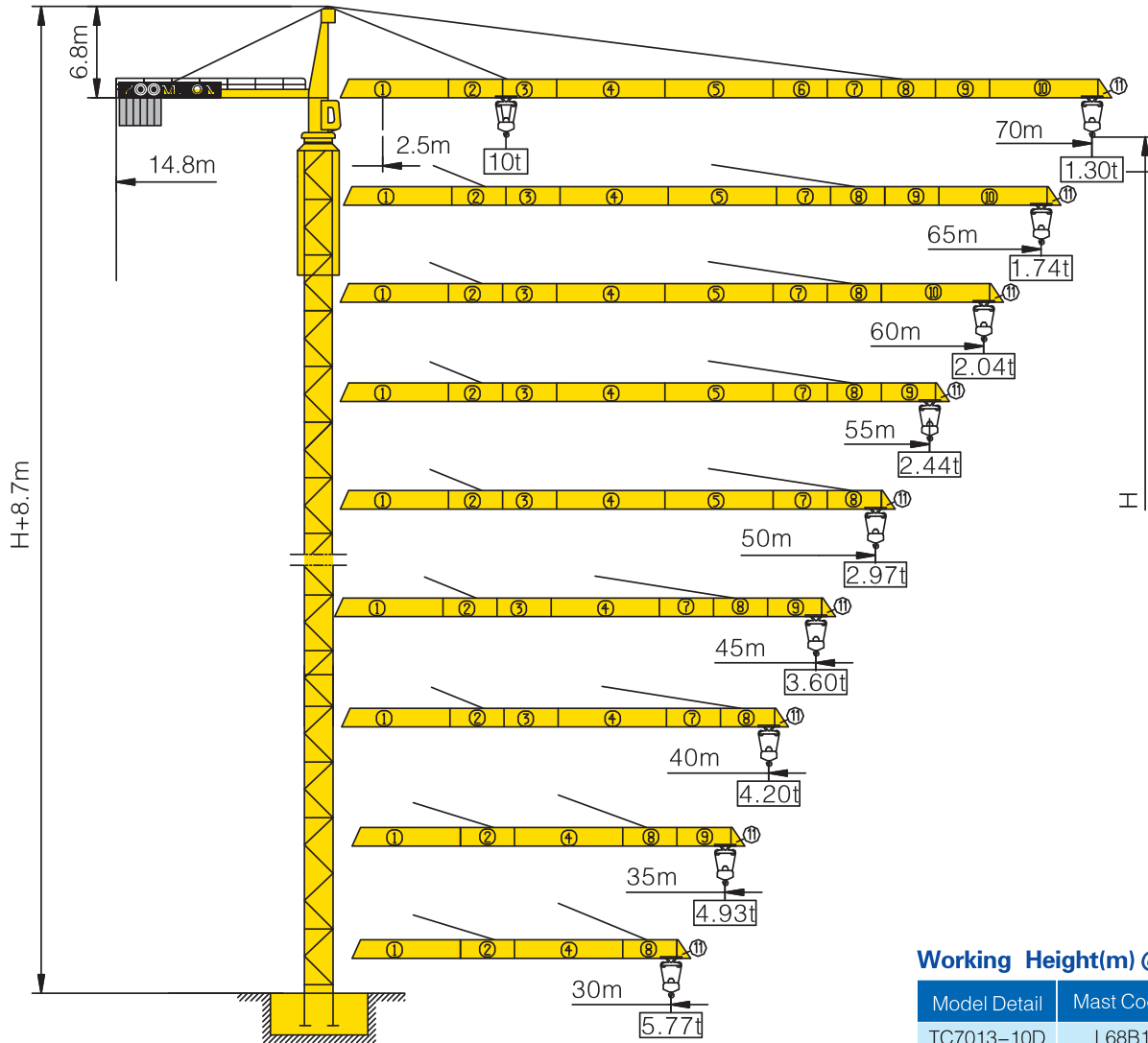


# TC7013-10



## Counter-jib ballast

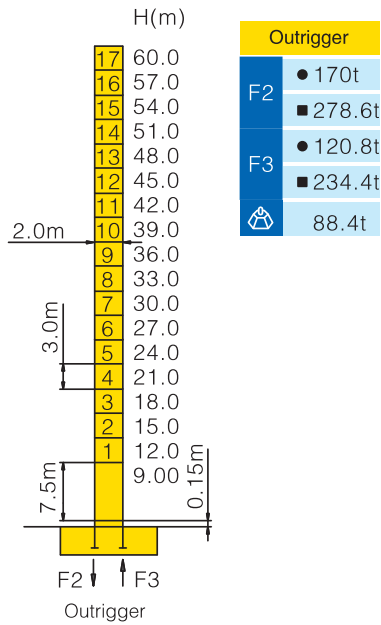
			(Kg)	PHZ3000	PHZ2500	PHZ2000	PHZ1500
70m	14.8m	25000	6	2	1	0	
65m	14.8m	22500	6	1	1	0	
60m	14.8m	20500	6	1	0	0	
55m	14.8m	20000	6	0	1	0	
50m	14.8m	18500	5	0	1	1	
45m	14.8m	16500	5	0	0	1	
40m	14.8m	14500	4	1	0	0	
35m	14.8m	12000	2	1	1	1	
30m	14.8m	10000	2	1	0	1	

## Working Height(m) @ Wall-tie Location(m)

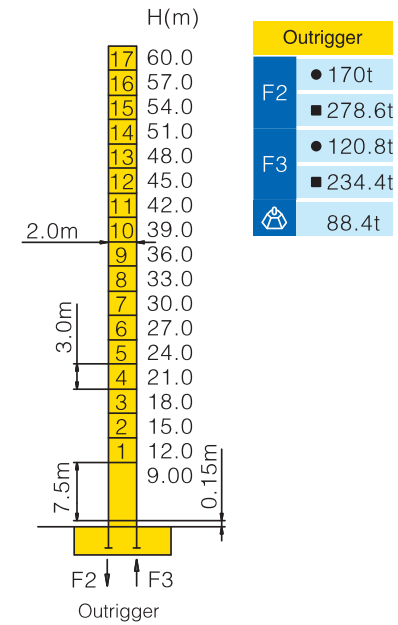
Model Detail	Mast Code	Wall-tie #1	Wall-tie #2	Wall-tie #3	Wall-tie #4	Wall-tie #5	Wall-tie #6
TC7013-10D	L68B1	87 @ 47	111 @ 74	135 @ 104	159 @ 122	183 @ 146	200 @ 170
TC7013-10E	L68A1	87 @ 47	111 @ 74	135 @ 104	159 @ 122	183 @ 146	200 @ 170

## Masts Reactions

TC7013-10D



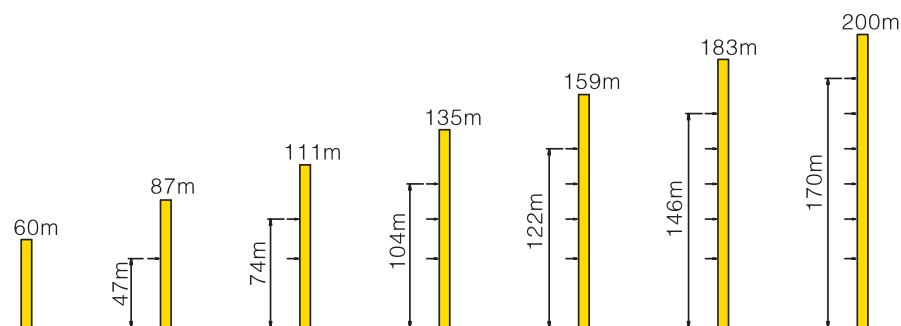
TC7013-10E



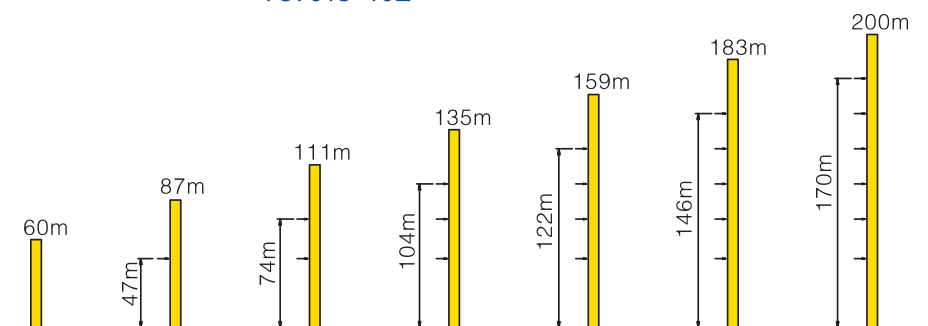
● Reactions in service ■ Reactions out of service  
⚠ Without load and ballast with longest jib and maximum height  
Ⓜ For more erecting solutions, consult us!

## Anchorage

TC7013-10D




TC7013-10E





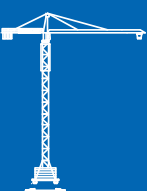









TC7013-10

Load diagrams

		Max.Capacity m/t	13	15	20	25	30	35	40	45	50	55	60	65	70	
70m (R=71.75)	♭	2.5—25.57m 5t	5.00				4.12	3.41	2.88	2.47	2.14	1.87	1.65	1.46	1.30	
	♭♭	2.5—13.93m 10t	10.00	9.18	6.55	5.01	3.99	3.28	2.75	2.34	2.01	1.74	1.52	1.33	1.17	
65m (R=66.75)	♭	2.5—28.68m 5t	5.00				4.74	3.93	3.34	2.87	2.50	2.20	1.95	1.74		
	♭♭	2.5—15.57m 10t	10.00	7.48	5.75	4.61	3.80	3.21	2.74	2.37	2.07	1.82	1.61			
60m (R=61.75)	♭	2.5—29.6m 5t	5.00				4.92	4.09	3.47	2.99	2.61	2.30	2.04			
	♭♭	2.5—16.06m 10t	10.00	7.76	5.97	4.79	3.96	3.34	2.86	2.48	2.17	1.91				
55m (R=56.75)	♭	2.5—30.92m 5t	5.00				4.31	3.67	3.16	2.77	2.44					
	♭♭	2.5—16.76m 10t	10.00	8.16	6.28	5.05	4.18	3.54	3.03	2.64	2.31					
50m (R=51.75)	♭	2.5—32.68m 5t	5.00				4.61	3.92	3.39	2.97						
	♭♭	2.5—17.67m 10t	10.00	8.68	6.70	5.40	4.48	3.79	3.26	2.84						
45m (R=46.75)	♭	2.5—34.26m 5t	5.00				4.88	4.16	3.60							
	♭♭	2.5—18.53m 10t	10.00	9.16	7.08	5.71	4.75	4.03	3.47							
40m (R=41.75)	♭	2.5—34.56m 5t	5.00				4.93	4.20								
	♭♭	2.5—18.68m 10t	10.00	9.25	7.15	5.77	4.80	4.07								
35m (R=36.75)	♭	2.5—34.56m 5t	5.00				4.93									
	♭♭	2.5—18.68m 10t	10.00	9.25	7.15	5.77	4.80									
30m (R=31.75)	♭	2.5—30.0m 5t	5.00													
	♭♭	2.5—18.68m 10t	10.00	9.25	7.15	5.77										

## Mechanisms

		Hoisting	QE10100E2	
	Slewing	RCV145B1.130 RCV145B2.130		
	0~0.6 r/min	2×145 N.m		
	Trolleying	BP55B		
	0~55 m/min	5.5 kW		
	Travelling	ZA52A-D ZC52A-D		
	25/12.5 m/min	2×5.2 kW		
		55/55 kW		
		540m⊙ ( 6 layers ) ⊙ Consult us If overtop	V	 2.5t 100 m/min
			 5t 50 m/min	
			IV	 5t 50 m/min
			 10t 25m/min	
		380V(+10%–10%) 50Hz		75.5+2×5.2 kW

For more mechanisms optional, consult us!