

# Arcade Version

# LEO 12 T

## Technical Data\*

Aerial Work Platform **TEUPEN<sup>®</sup> hyLIFT<sup>®</sup>**



**LEO 12 T**

|   |                                |
|---|--------------------------------|
| Working height:   | approx. 12,00 m                |
| Cage floor height:  | approx. 10,00 m                |
| Lateral outreach to either side:  | approx. 8,45 m                 |
| Safe load on cage:  | max. 120 kg                    |
| Size of working cage (LxWxH):   | 0,80 x 0,70 x 1,10 m           |
| Overall length including jib:   | min. 4,75 m                    |
| Overall length excluding jib:   | min. 2,80 m                    |
| Minimum clearance width:  | min. 1,76 m                    |
| Overall height:   | min. 1,98 m                    |
| Weight excluding jib system:  | approx. 2985 kg                |
| Total weight of the jib system:   | approx. 65 kg                  |
| Standard surface on crawlers (LxW):   | min. 1,74 m x 1,68 m           |
| Max. loading on each crawler:   | approx. 21,4 kN                |
| Surface load in standard work position:                                     | approx. 4,15 kN/m <sup>2</sup> |
| Swivel angle (lower swivel arm 100° + boom 120°):                           | 220°                           |
| Movable up to working height:   | approx. 10,10 m                |
| Permissible positioning for working in tilt angle:                          | approx. 2°                     |
| Drive with boom up (1. Section telescoped in) possible up to ground slopes: | approx. 2°                     |
| Climbability with boom in transport position (in direction of traffic):     | approx. 15 %                   |
| (crosswise to direction of traffic):  | approx. 15 %                   |
| Speed:  | max. 1,2 km/h                  |
| Speed with raised boom:   | max. 0,7 km/h                  |
| Power track:  | installed outside              |
| Telescoping cylinder:   | under the telescoping boom     |
| Max. shearing force under crawler with protective covers:                   | approx. 4400 N                 |
| Battery drive:  | 24 V / 300 Ah                  |
| Charging set:   | 230 V / 16 A                   |

## Ancillary equipment

### Electricmotor EBS 90 L X 4

|                        |               |
|------------------------|---------------|
| Nominal input voltage: | 230 V / 50 Hz |
| Drawing of current:    | 12,9 A        |
| Output:                | 2,2 kW        |

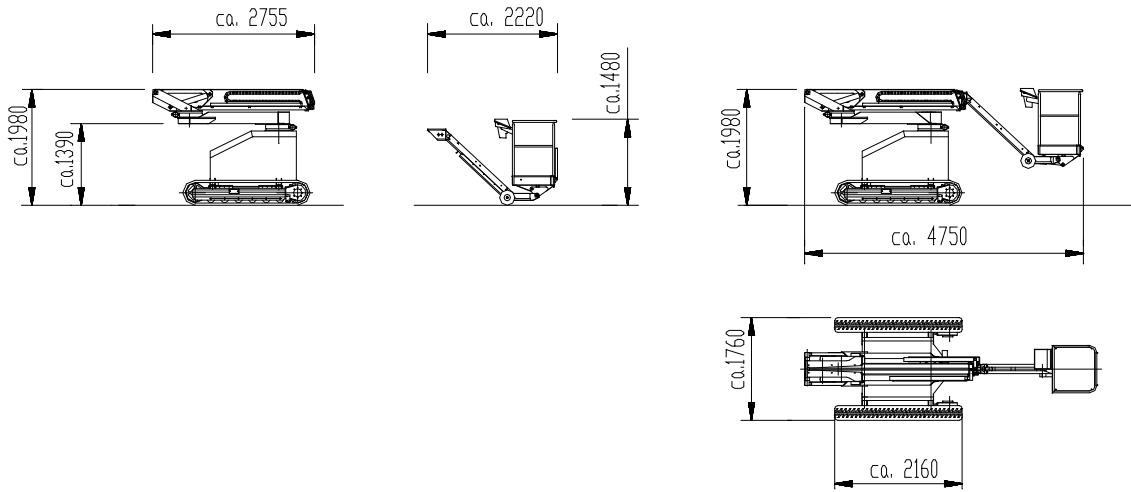
### Driving-engine Honda GX 390

|   |  |
|---|--|
| Motor Honda GX 390, air-cooled, 1 cyl., 4 - stroke (sound-suppressed) |  |
| Performance (max.):   | 9,6 kW (13 PS) at 3600 min <sup>-1</sup> |
| Fuel:   | Lead-free petrol                         |
| Fuel economy/h:   | approx. 3,9 L                            |
| Noise level:  | approx. 82 dB (A)                        |

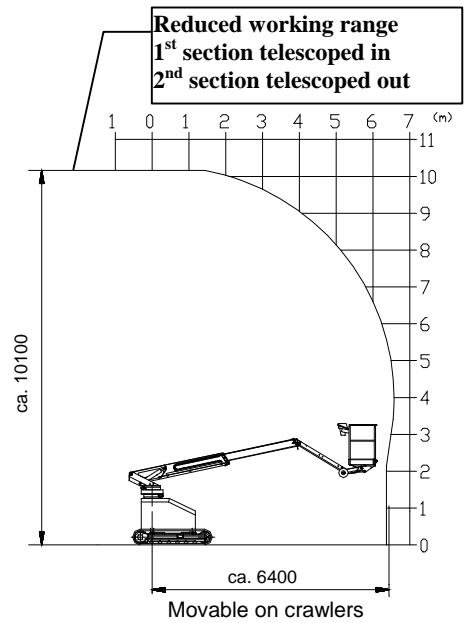
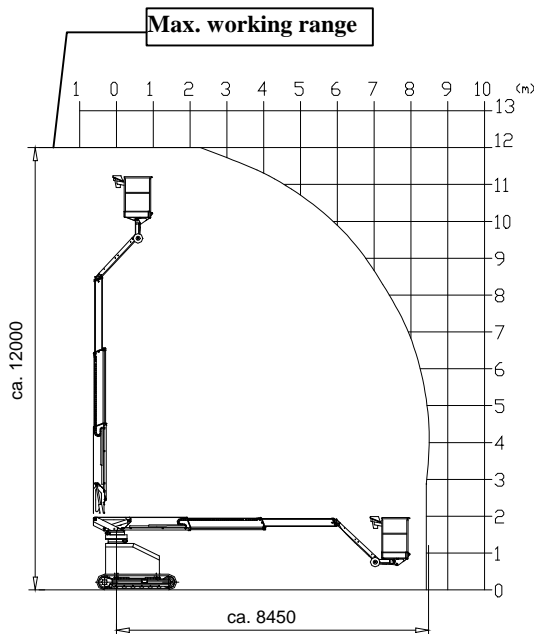
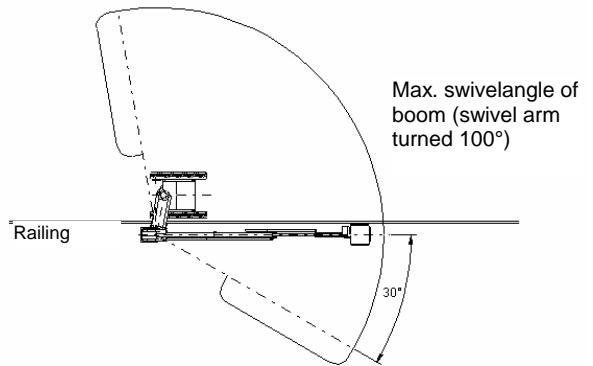
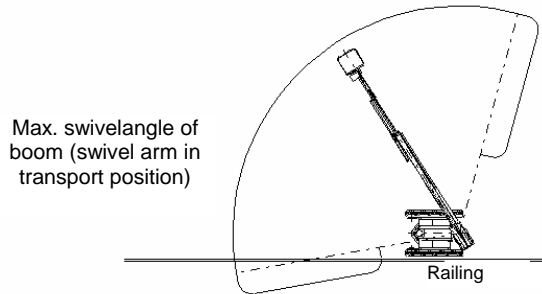
\*\*Technical data with standard equipment!

Alterations in construction reserved!

As at 16.03.09



Standard swivel angle [ 220°  
(8,45 m outreach)



Alteration in construction reserved!

## TEUPEN Maschinenbaugesellschaft mbH

Address: Marie-Curie-Strasse 13 - 48599 Gronau-GERMANY - Phone ++49 / 2562 / 8161-0 - Fax ++49 / 2562 / 8161-888  
P. O. Box: 1951 - 48580 Gronau-GERMANY

Internet: <http://www.teupen.info> - E-mail: [mail@teupen.info](mailto:mail@teupen.info)