



DT7K

A light-weight, simplified, lower-cost alternative to our full-featured ET series cranes. The boom is manually telescopic from 6 to 10 ft. and features a 3-position manual boom elevation system with the weight of the boom spring counterbalanced for quick, one-handed raising and lowering.

FEATURES

- * 2,200 lb. Maximum Lifting Capacity
- * 7,000 ft.-lb. Moment Rating
- * Electric 12V Power
- * Venturo Heavy-Duty Electric Winch (meets ANSI B30.5)
- * Spring counterbalanced, 3-position manual boom elevation
- * Manual boom extension 6-10 ft.
- * Continuous Manual Rotation with 8-position base lock to hold mast firmly in position while in use and while traveling
- * Load hook tie down eye built into base

OPTIONAL EQUIPMENT

- * Mounting Pedestal for Increased Working Heights
- * Outrigger Packages for All Styles of Bodies
- * Quick Disconnect Battery Cable Plug/Socket

LIFTING CAPACITIES	
REACH (FT.)	CAPACITY (LBS.)
6	1,200
8	900
10	700

STANDARD EQUIPMENT

- * Remote Control Pendant: 15 ft. Cord with Quick Disconnect
- * 50 ft. of 3/16" Wire Rope
- * Snatch Block with Swivel Hook and Safety Latch
- * Master Disconnect Switch
- * Battery Cable: 25 ft., 4 Gauge
- * Weight: 285 lbs.

Specifications subject to change without notice.



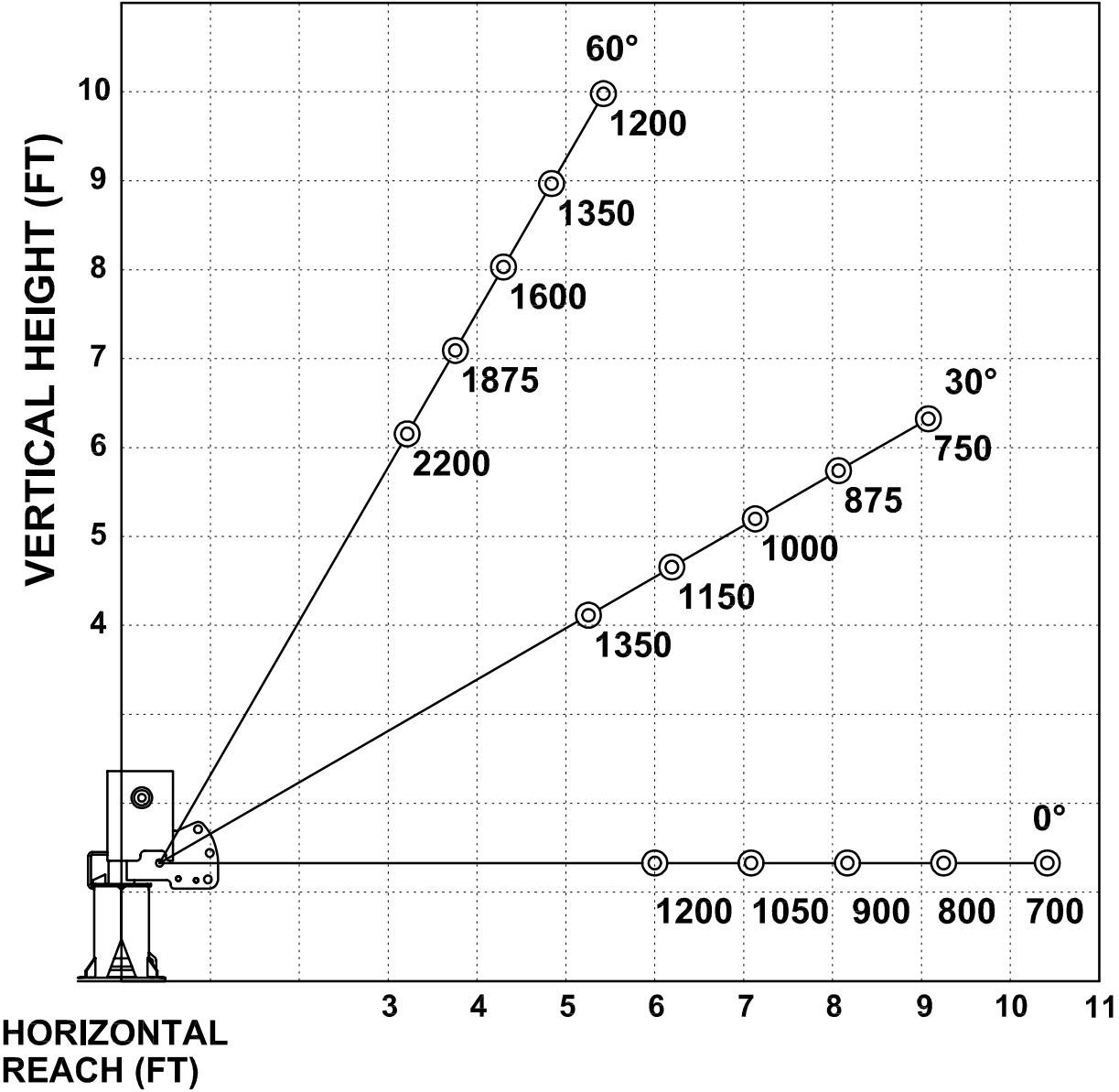
RUGGED. RELIABLE. REAL.

12110 Best Place Cincinnati, OH 45241
 800-226-2238 internetsales@venturo.com
www.venturo.com

DISTRIBUTED BY:



DT7K- 6 TO 10 FT. BOOM MAXIMUM CAPACITY CHART



**MUST USE SNATCH BLOCK
FOR LOADS OF 1200 LBS.
AND GREATER**