

Valla 35 E



Electric battery operated Mobile Crane Max. Capacity **Lbs. 7,700**



Valla

OUTREACH (Ft)	CAPACITY (Lbs.)
3	4,500
9	1,600
15	1,000



TECHNICAL DATA

CRANE FRAME: five wheelers frame fabricated from preformed and welded steel plate with built-in counterweight.

DRIVE: by DC 3,3 kw 24V reversible electric motor, controlled by inverter, electro magnetic control on disk brake.

BATTERY: 24V 525Ah battery, battery meter on dashboard.

BRAKES: hydarulically controlled foot operating brake. Lever mechanically controlled parking brake.

STEERING: power steering with hydraulic motor and gear 180° (Orbitrol system). Safety valves and filter.

WHEELS: rear 1 solid tires 18 x 7 x 8; front 4 solid tires 15 x 41/2 x 8.

BOOM: boom fabricated from preformed and welded quality steel plate. Five telescoping sections: 1 fixed; 2 hydraulically telescoping and 2 manually telescoping. Fitted with nylon wear pads adjustable wear pads on the sides.

BOOM CONTROL: distributor by proportional levers.

LMI: electronic Load Moment Indicator. Display showing lifted load, max allowed load, tilting percentage, operating radius, angle, telescope and light indicators on the operative mode.

TOTAL WEIGHT: approx. Lbs. 6,800 **MAX. CAPACITY:** Lbs. 7,700

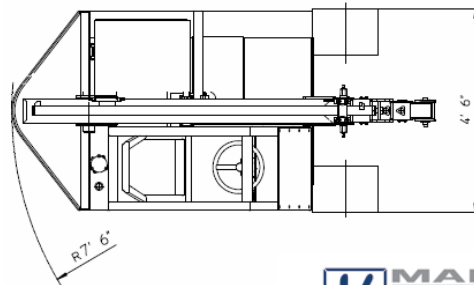
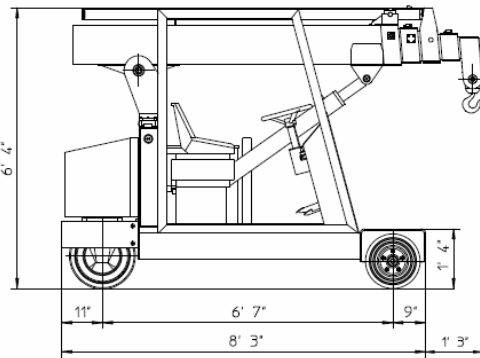
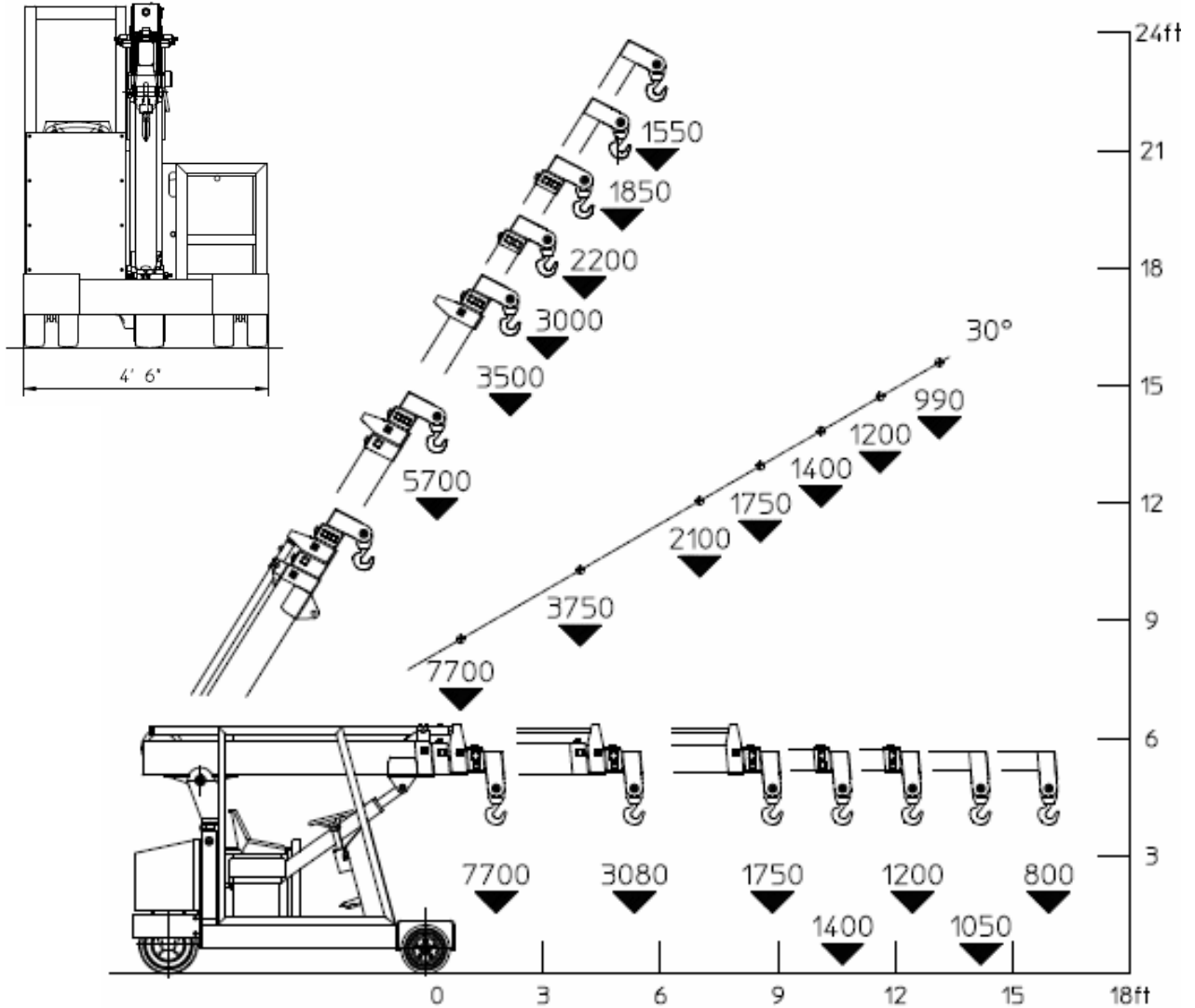
Options on request: hydraulic winch; chain hoists; carry-deck; battery charger (on board and stand-alone); manual and hydraulic jibs; cable remote control; radio remote control; fully hydraulic boom, man bucket and relevant certification as aerial platform; full set of road lights; non marking tires.

Data subject to be changed without any previous notice. Pictures may differ from technical description.

Valla 35 E



VALLA mobile crane mod. 35 E complies with the following standards:
 -2006/42/CE
 -UNIEN13000
 -I.S.P.E.S.L.



Lbs./ft

Data subject to be changed without any previous notice. Pictures may differ from technical description.



Valla a division of CVS Ferrari Srl
 Via Piacenza, 45 - 29010 Calendasco (Piacenza) - ITALIA
 Tel. +39 0523 762025 / 752004 - Fax +39 0523 760531
 e-mail: info@valla.com - www.valla.com