















## MC 115 B

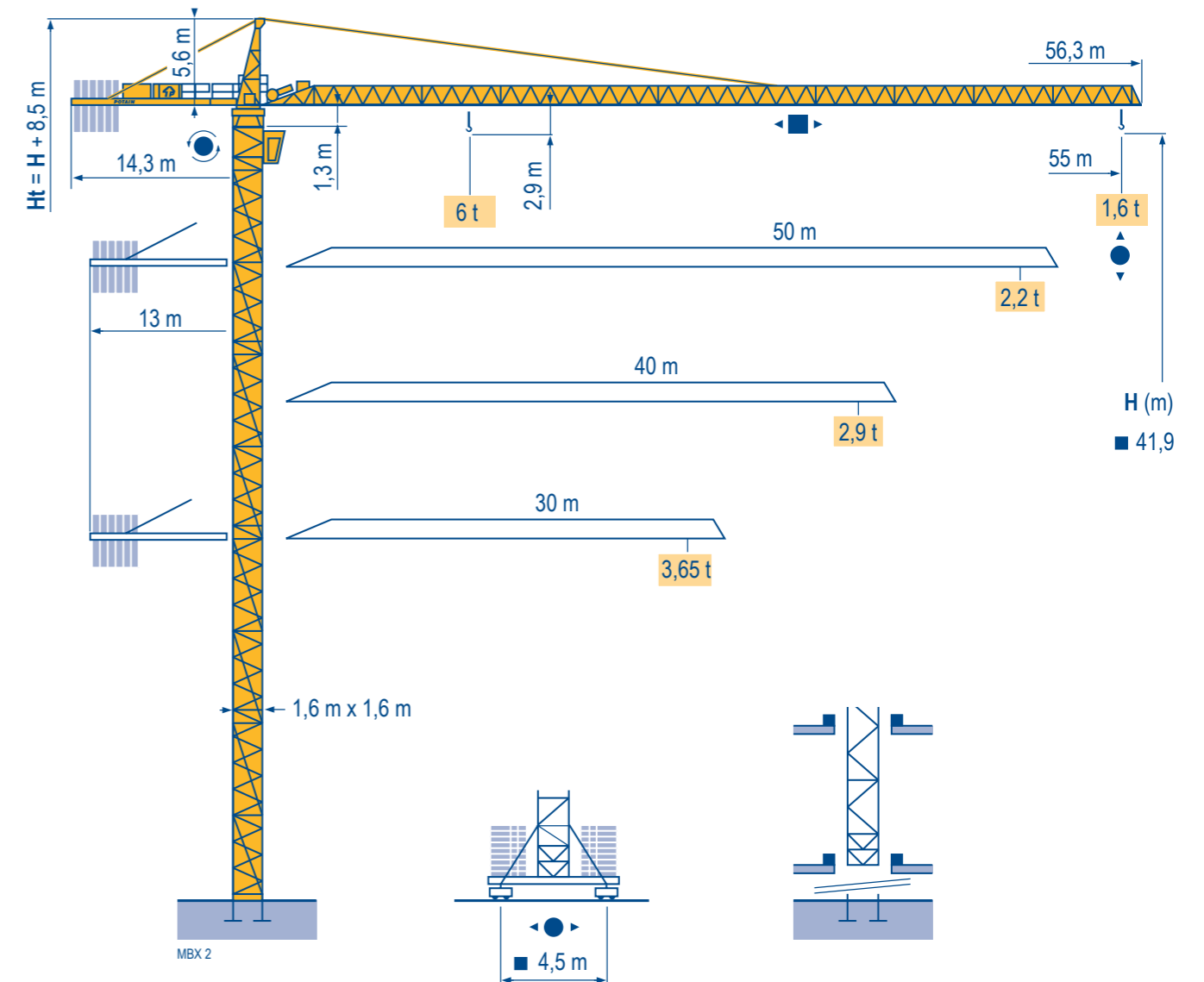
### Mechanisms

MBX 4

		m/min							hp	kW		
			6,2	38	76	3,1	19	38				
	33 PC 15	m/min	6,2	38	76	3,1	19	38	33	24	260 m	
		t	3	3	1,5	6	6	3				
	45 RCS 15 GH	m/min	0 → 56		0 → 112		0 → 28		0 → 56		408 m	
		t	3		1,5		6		3			
	4 D3 V3	m/min	15 - 30 - 58								4	3
	RCV 145	rpm	0 → 0,8								2 x 6	2 x 4,4
	SB 16 A RT 324 R ≥ 10 m	m/min	12,5 → 25								2 x 7	2 x 5,2
CEI 38  IEC 38											kVA	
400 V (+6% -10%) 50 Hz											33 PC : 50 kVA 45 RCS : 65 kVA	

-  GB Hoisting
-  Trolleying
-  Slewing
-  Travelling

 This commercial document is not legally binding.  
For any technical information, please refer to the corresponding instructions.



**Manitowoc**  
Crane CARE

**Manitowoc**  
Crane Group



**Americas**  
Tel : +1 888 479 7278  
Tel : +1 717 593 2000

**Europe - Middle East - Africa**  
Tel : +33 (0) 4 72 81 50 00  
Tel : +44 (0) 191 522 2000

**Asia - Pacific**  
Tel : +65 6264 1188  
Fax : +65 6862 4040

www.manitowoccrane.com

**Manitowoc Crane Group Asia Pte Ltd**  
Manitowoc Crane Group  
4 Kwong Min Road  
Singapore 628707  
Tel: +65 6264 1188  
Fax: +65 6862 4040  
www.manitowoccrane.com

**MC 115 B**  
Réf. 2004 45 MBX 6

Copyright.Reproduction interdite © POTAIN 2004

Réalisation Sedoc

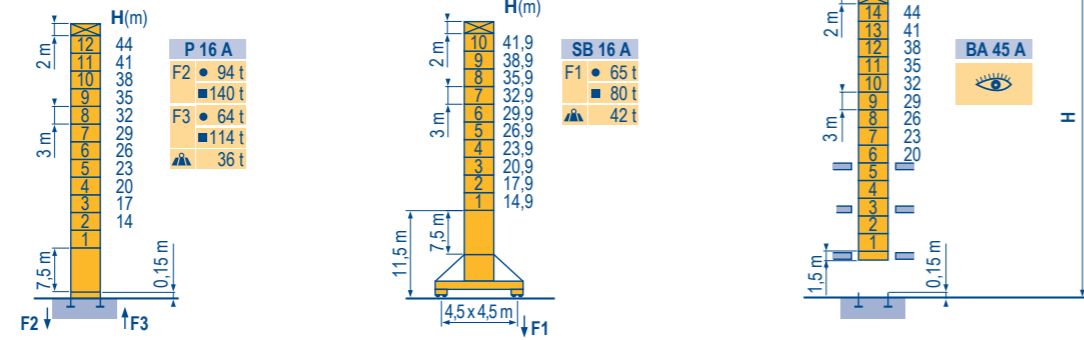
**Manitowoc**  
Crane Group

**TÜV** FEM 1.001-A3  
ISO 9001

**Masts / Reactions**

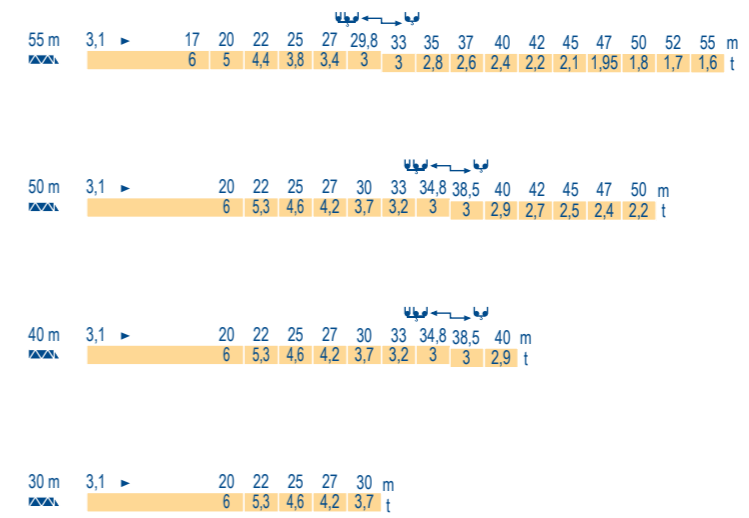
□ 1,6 m  
30 m → 55 m

MBX 3



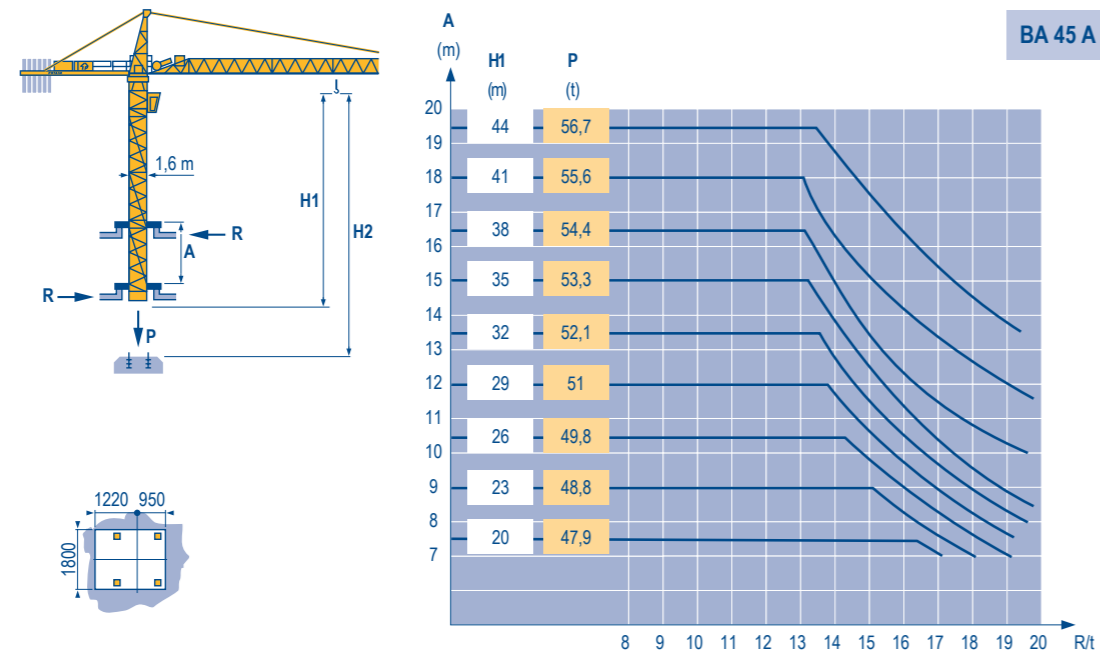
**Load diagrams**

MBX 1



**Climbing crane**

MBX 2



**Counter-jib ballast**

MBX 2

		3450 kg	2250 kg	▲ (kg)
55 m	14,3 m	4	1	16 050
50 m	13 m	4	1	16 050
40 m	13 m	4	-	13 800
30 m	13 m	2	2	11 400

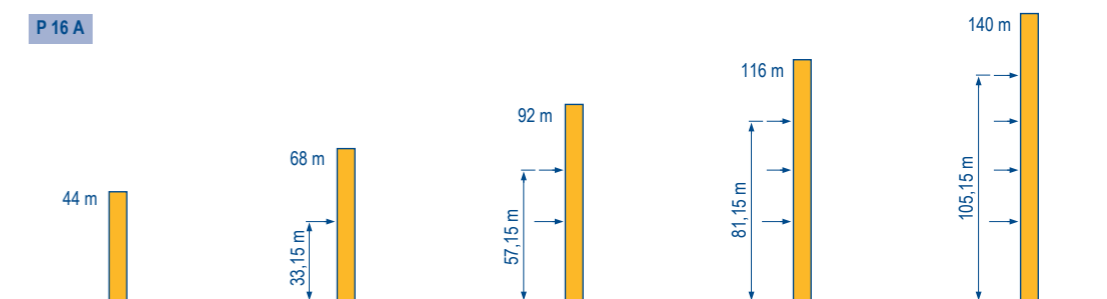
**Base ballast**

MBX 2

□ 1,6 m	SB 16 A ●	H (m)	41,9	38,9	35,9	32,9	29,9	26,9	23,9	20,9	17,9	14,9
		▲ (t)	84	72	60	42	42	42	42	42	42	42

**Anchorage**

MBX 1



**CITY CRANE MC 115 B**



GB

- Reactions in service
- Reactions out of service
- ▲ Without load, ballast (or transport axles), with maximum jib and maximum height.
- 👁 See climbing crane

**CITY CRANE MC 115 B**



GB

- A Distance between collars
- H1 Crane height
- P Crane weight (in service)
- R Horizontal reaction