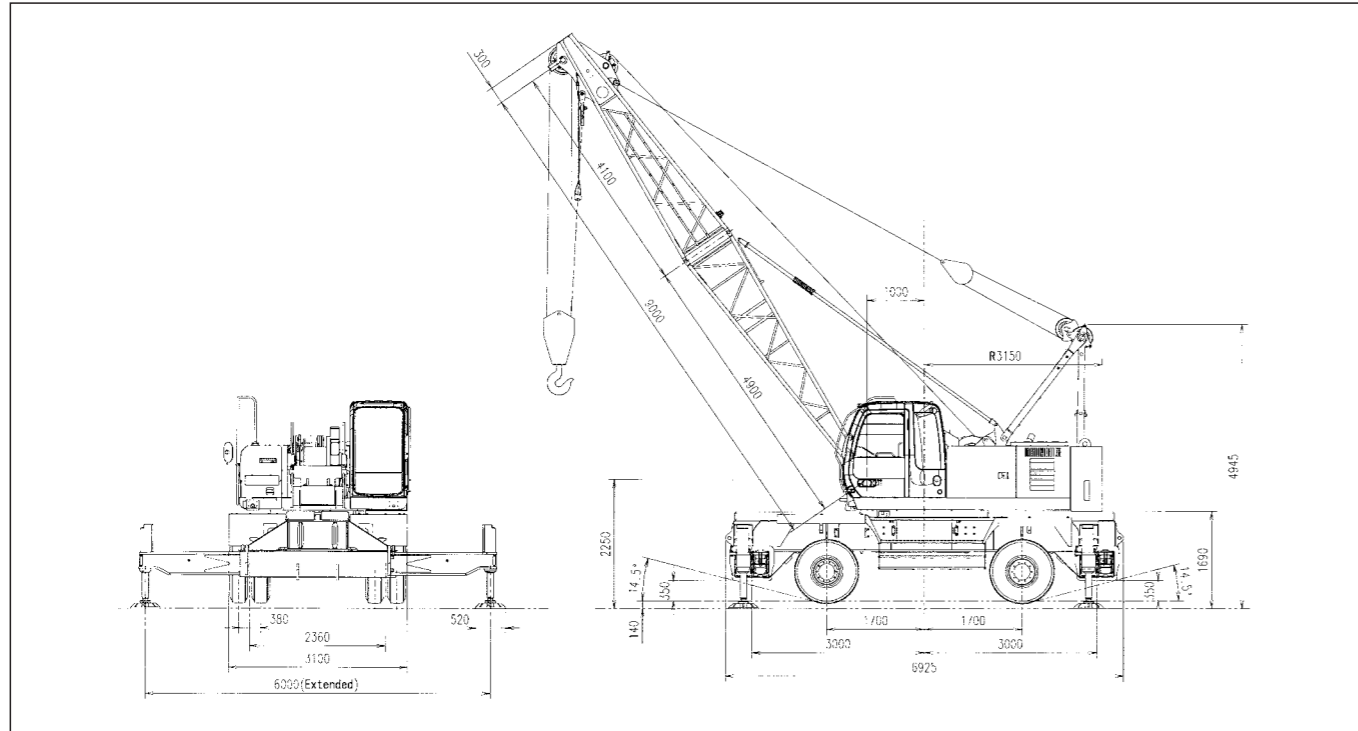


GENERAL DIMENSIONS · SPECIFICATIONS

UCX350

GENERAL DIMENSIONS

(Unit : mm)



SPECIFICATIONS

Max. lifting capacity	t × m	35.0 × 3.5	
Basic boom length	m	9.0	
Max. boom length	m	24.0	
Rope line speed (*1)	Main drum	m/min	105.0
	Boom hoist drum	m/min	70.0
Cable dia. - front / boom hoist drum	mm	20 / 16	
Slewing speed	min ⁻¹ (rpm)	3.0	
Undercarriage drive / steer system		4 × 2	
Travel speed (*2)	km/h	12	
Wheel base	m	3.40	
Tread - front / rear	m	2.36 / 2.36	
Gradeability	% (°)	14 (8)	
Outrigger extended width	m	6.0	
Outrigger distance	m	6.0	
Engine	Make & model	Isuzu 6BG1T	
	Rated output	kW/min ⁻¹ (PS/rpm)	110 / 2100 (150 / 2100)
Axle loading (w/basic boom) - front / rear	t	Approx. 16.0 / 22.5	
Operating weight	t	Approx. 38.5 (w/9.0m basic boom, 35t hook block)	

Notes : 1. These figures are based on drum first layer and rated engine rpm with no load, and vary under load and operating conditions(*1).
 2. Travel speed is based on flat, level and firm supporting surface, and under the conditions that no load must be applied and front-end attachment must be 9.0m basic boom(*2).
 3. Unit in this specification are shown under International System of Units; the figures in parenthesis are under Gravitational System of Units as old one except the gradeability.

·We are constantly improving our products and therefore reserve the right to change designs and specifications without notice.
 ·Illustrations may include optional equipment and accessories, and may not include all standard equipment.

Address inquires to:

Hitachi Sumitomo Heavy Industries
Construction Crane Co., Ltd.

9-3, Higashi Ueno 6-chome, Taito-ku, Tokyo 110-0015, Japan
 Phone : 81-3-3845-1387 Facsimile : 81-3-3845-1394
<http://www.hsc-crane.com>

The New World Standard
UCX350

Hydraulic Wheel Crane



Reliance and Performance

A quarter century has passed since launched the best seller wheel crane UC25, herein Hitachi Sumitomo release the highly developed and the renovated brand-new 35t capacity hydraulic wheel crane UCX350.

Higher productivity

UCX350

A greater lifting capacities at widely used working ranges

Although it is designed as a 35t nominal capacity, yet, at widely used working ranges, a greater lifting capacities are available for the area with a 4-outrigger jacking point is 6m when outriggers are fully extended equal with 50t class truck crane, and it is capable of a good lifting play with a room.



"H" type hydraulic outrigger is standardized

The outrigger is of course hydraulic type as standard for its easy set-up in shorter time, and its area is 6m length by 6m width when fully extended for greater lifting performance with a good stability.

Adopted a high alloy made box type chassis and the kessler axle

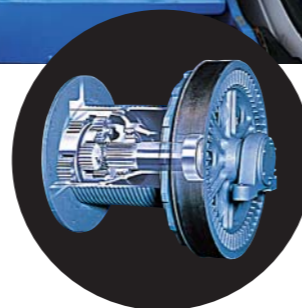
Adopted a quake-durable high alloy made box-type frame. The Kessler axle which is highly reputed for its traveling performance is equipped as well.

An 110kW (150ps) high output engine

An Isuzu 6BG1T is provided, and its rated output is 110kW as high as good enough for the UCX350. The engine, of course, is a clean, and meets current emission regulations of stage/tier 2 of Europe, United States of America and Japan.

A speed reducer contained winch is equipped as a standard(Loaded a free fall mechanism)

Highly reputed speed reducer contained winch is equipped as a standard. It enables basic crane works by a sole hoisting lever that realizes a simple operation and a work efficiency.



Visibility developed and functional new designed cab

With its the modern and the sophisticated design, the backside and the rightside view are highly developed equally as the front view so that it improved safety in a traveling as well as an operating safety. Also the simple cab layout and a joystick lever, a tilt power steering enhances an operator's ease under an operator's comfort in an effective operation and a traveling.



Reclining seat with arm rests

For operator comfort too, operator's seat is a full reclining type with a suspension mechanism and arm rest on both sides of the seat, and the seat is with cloth fabric.



A fully automative air-conditioner is designed as standard

For a further operator comfort, a fully automative air-conditioner with LCD monitor panel is standardized too. On the other hand, this air-conditioner takes a substitute gas as cleaned for CFC gas.



Fool proof shut-off system & engine monitoring panel

To insure safety when the operator leaves the cab, a main hydraulic shut-off lever is located in the cab exit to deactivate and lock the hydraulic system. In addition, an engine monitoring panel is provided for engine present operation status check.



Load moment indicator

To get a high level of operation safety, Load Moment Indicator, a computerized automatic over-load preventing device, is provided as standard which gives operator necessary information like present lifting conditions and so on.



An easy and simple maintenance for hydraulic filters and around radiators

For an easy and a simple maintenance, it is well considered the shape of the engine cover, centralized layout of hydraulic filters.



Safety devices (Standard equipment)

- Hook over-hoisting limiter
- Boom over-hoisting limiter
- Drum lock
- Boom angle indicator
- Slew lock
- Backstop
- Engine stop lever
- Lock lever (Fool proof shut-off lever)
- Seat belt
- Emergency evacuation hammer
- Level gauge
- Non slip tape



The New World Standard
UCX350
Hydraulic Wheel Crane

CRANE CAPACITIES

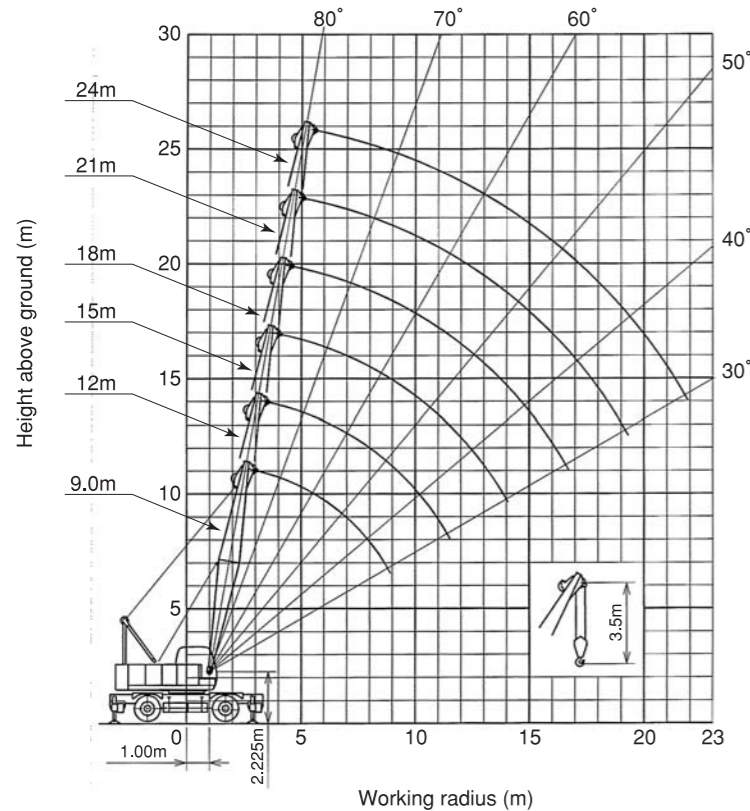
(Unit : t)

Working radius (m)	Boom length (m)					
	9.0	12.0	15.0	18.0	21.0	24.0
3.0	35.0					
3.5	35.0	30.0				
4.0	34.0	29.1	25.0	20.0/4.6m		
5.0	31.5	27.3	23.2	20.0	18.2/5.1m	15.0/5.7m
6.0	29.7	25.8	22.0	19.4	17.3	15.0
7.0	22.7	22.7	20.8	18.3	16.4	14.5
8.0	18.0	18.0	18.0	17.2	15.5	13.8
9.0	14.5/8.9m	14.9	15.6	14.8	14.7	13.1
10.0		12.6	13.2	13.2	12.5	12.5
12.0		10.3/11.5m	10.1	10.1	10.0	9.5
14.0			8.1	8.1	8.0	7.9
16.0			8.0/14.1m	6.7	6.6	6.6
18.0				6.3/16.7m	5.6	5.5
20.0					5.0/19.3m	4.8
21.9						4.2

- Notes : 1. Capacities include in this chart are the maximum allowable, and are based on machine standing level on firm supporting surface under ideal job conditions.
 2. Capacities are in metric tons, and are not more than 78% of minimum tipping loads except the figures surrounded by bold lines which are based on other factor of machine structural strength limitation.
 3. Capacities are based on freely suspended loads and make no allowance for such factors as the effect of wind, sudden stopping of loads, supporting surface conditions, and operating speed. Operator must reduce load ratings to take such conditions into account. Deduction from rated capacities must be made for mass of hook block, sling spreader bar, or other suspended gear. Hook block mass is as follows : 35t •• 0.5t
 4. All capacities are rated for 360° slewing.
 5. A 5.25t counterweight is required for all capacities on this chart.
 6. Outriggers must be fully extended for all operating conditions.
 7. Main boom length must not exceed 24.0m.

Hook capacity (t)	Hook weight (t)	Maximum rated load (t)						
		7	6	5	4	3	2	1
35	0.5	35.0	30.0	25.0	20.0	15.0	10.0	—

WORKING RANGES



STANDARD EQUIPMENT

Superstructure	Isuzu 6BG1T
	Front winch(Free fall)
	Boom hoist winch
	Two working lights
	Brake lights
	Turn signal
	Side mirror
	Water separator
	Under cover
	Spare tools
	Power steering
	Tilt steering
	Air conditioner
	Cup holder
	Dual, intermittent window shield wipers with washers
Undercarriage	Floor mat
	Room lamp
	Cigar lighter
	Ashtray
	Fixed cotton made seat
	Front window one touch lock(with release lever)
Safety devices	Dual 12.00-20-18PR tire
	Drum brake
	"H"type hyd. outriggers
	Fender
	Side guard
	Load moment indicator
	Hook over-hoisting limiter
	Boom over-hoisting limiter
	Drum lock
	Boom angle indicator
	Slew lock
	Backstop
	Engine stop lever
	Lock lever(Fool proof shut-off lever)
	Seat belt
Emergency evacuation hammer	
Front-end att.	Level gauge
	Non slip tape
	9.0m basic boom
	3.0m boom extension*
	6.0m boom extension*
Main hoist cable	
Boom hoist cable	
35t hook block	

*Optional equipment