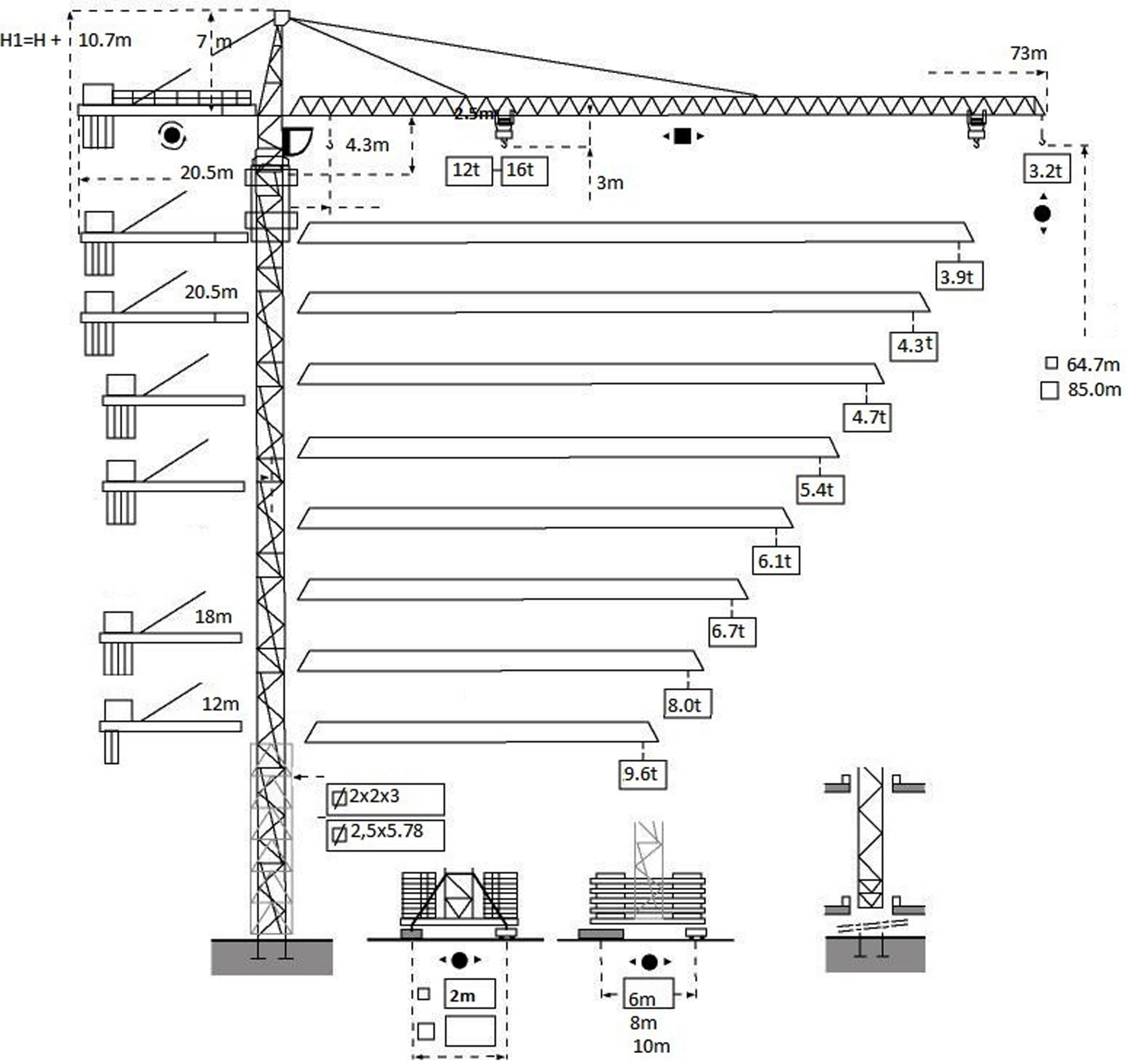
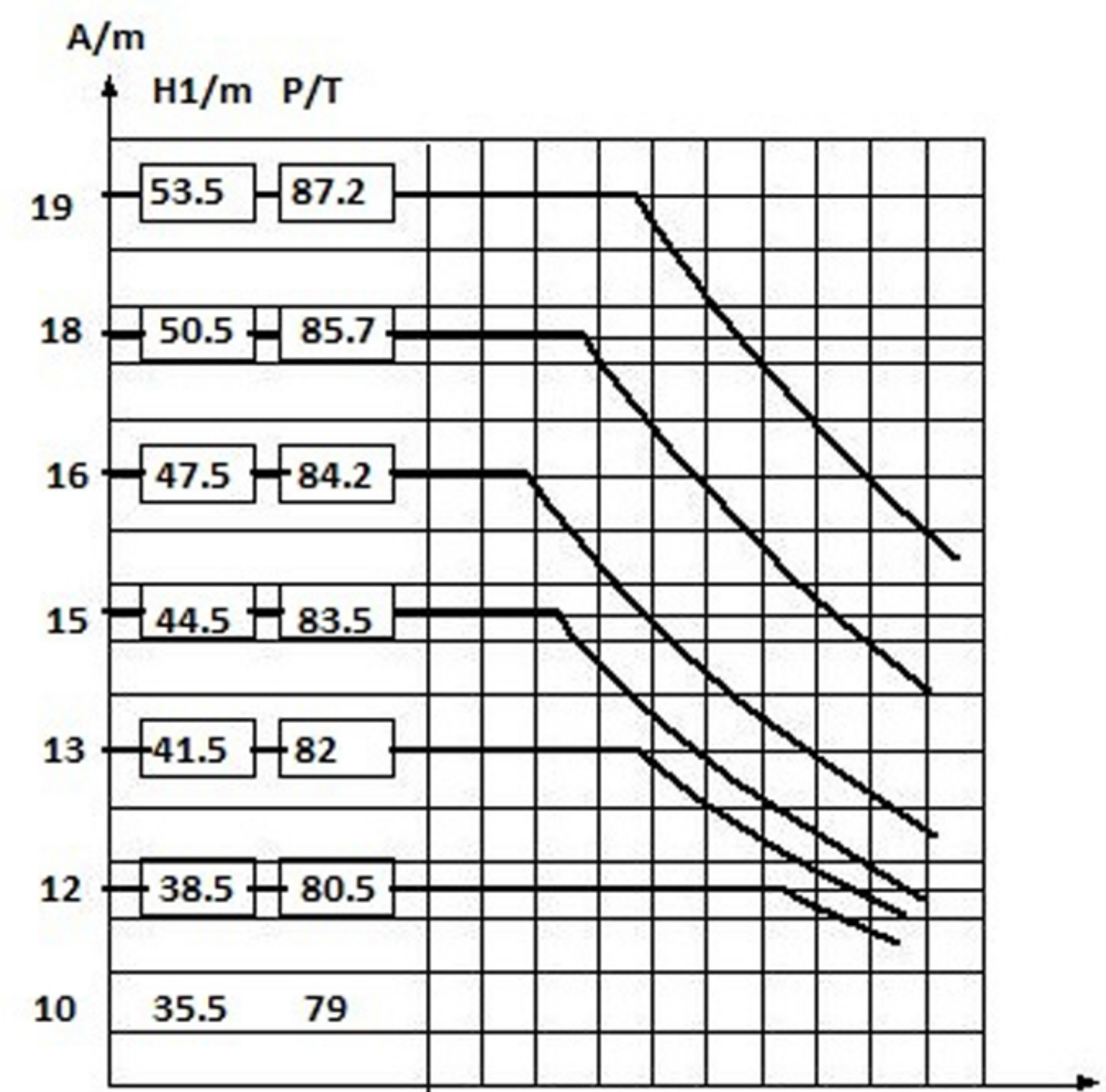
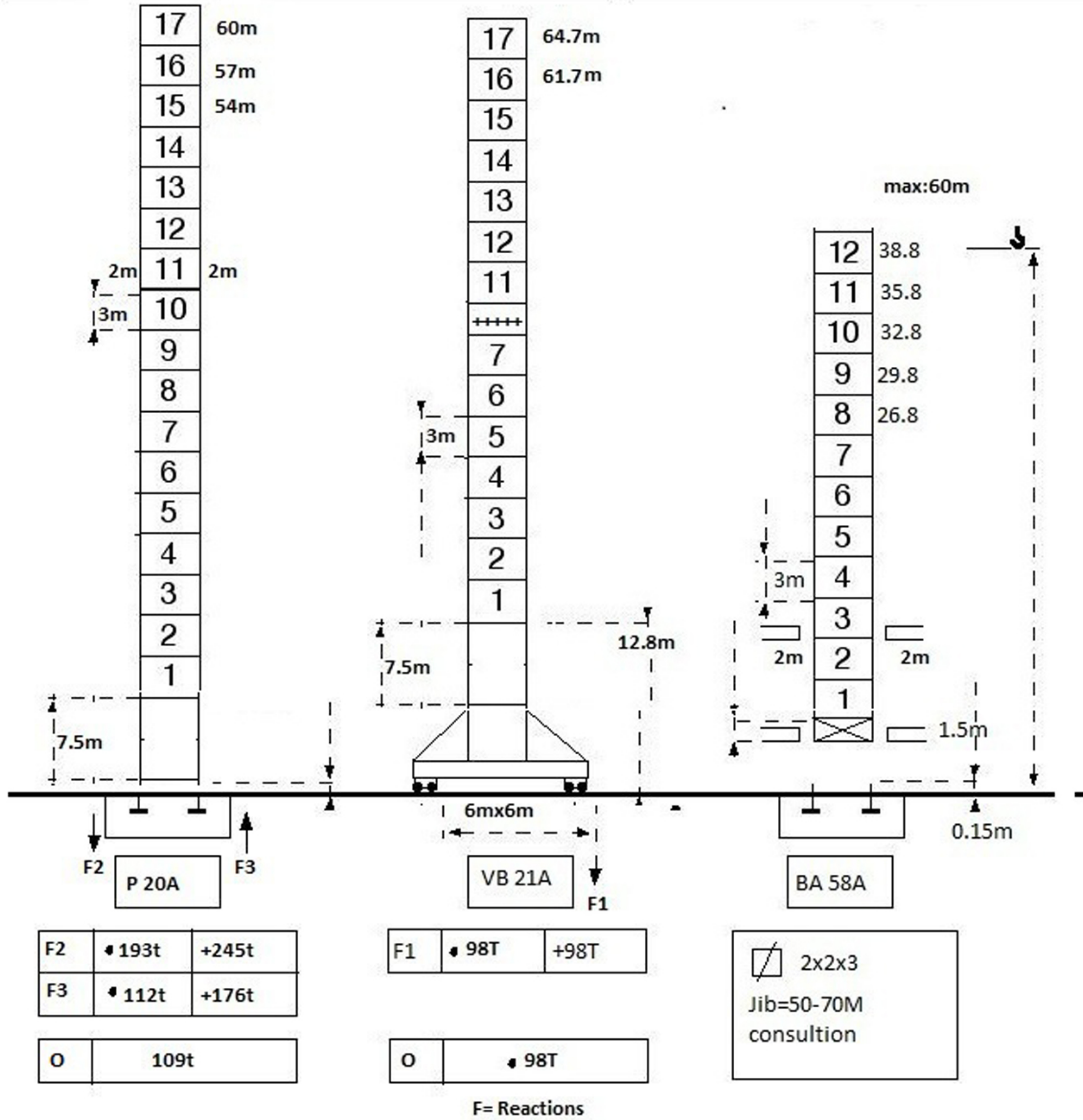
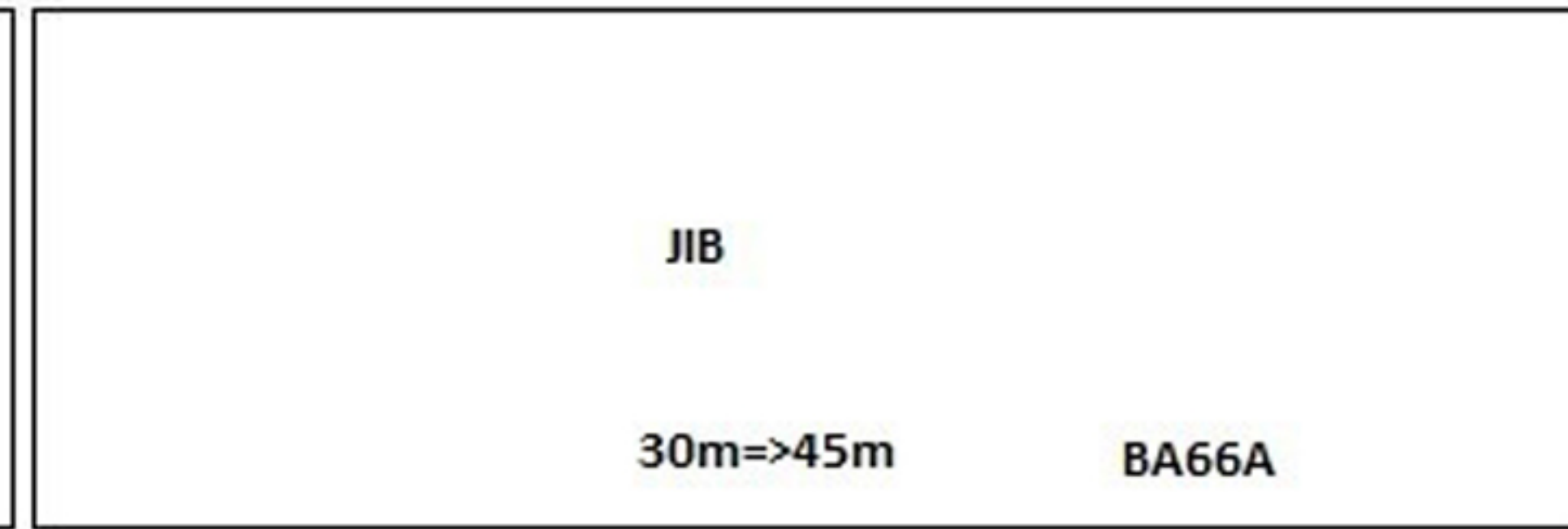
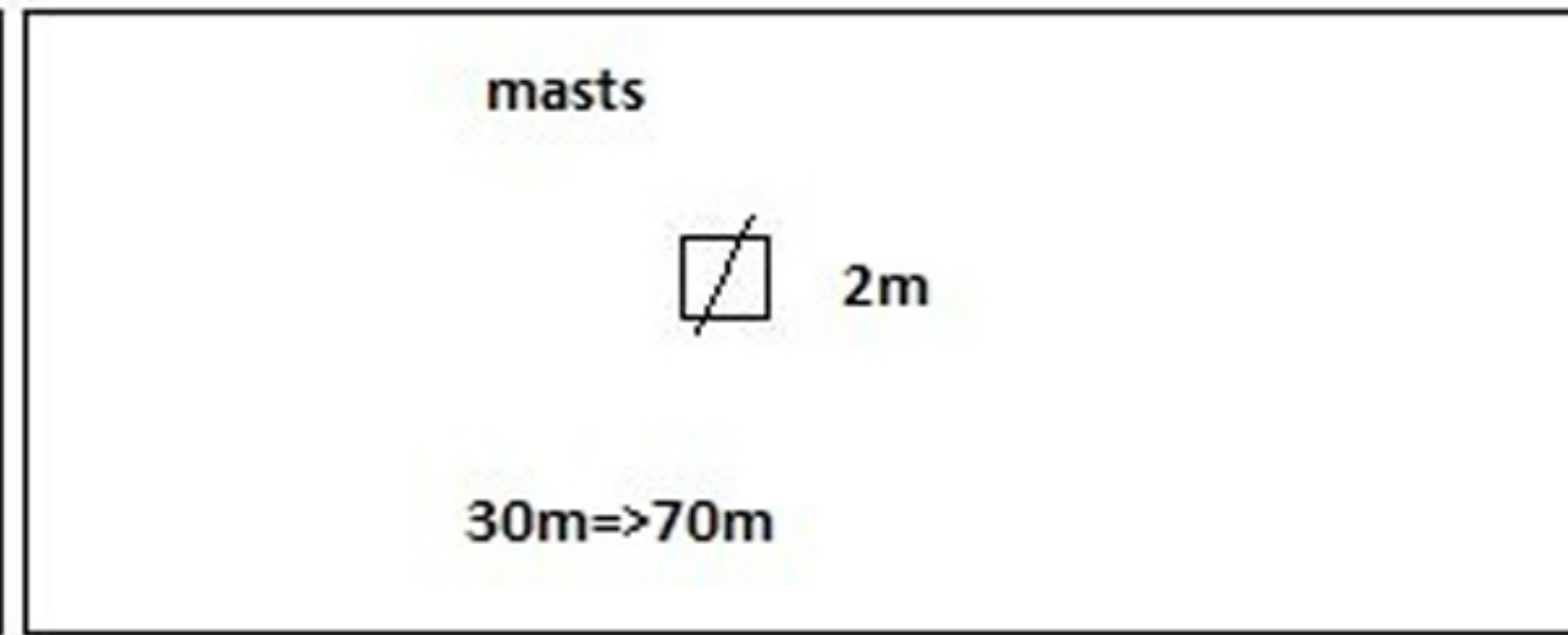
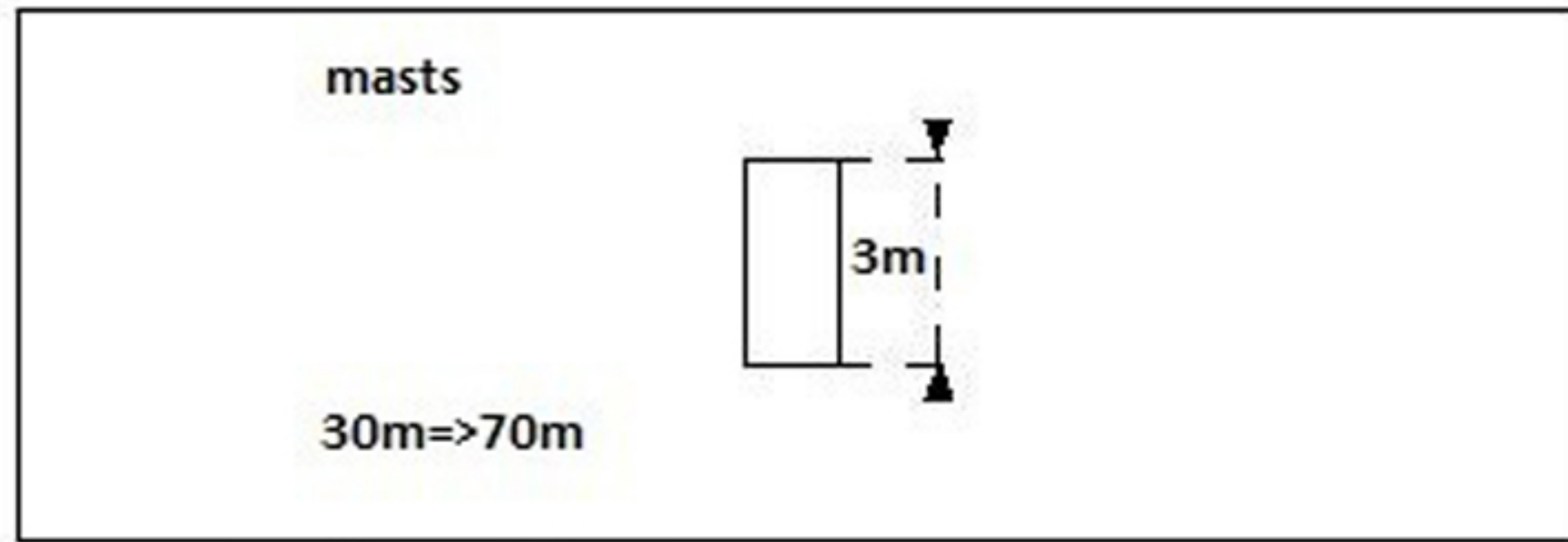


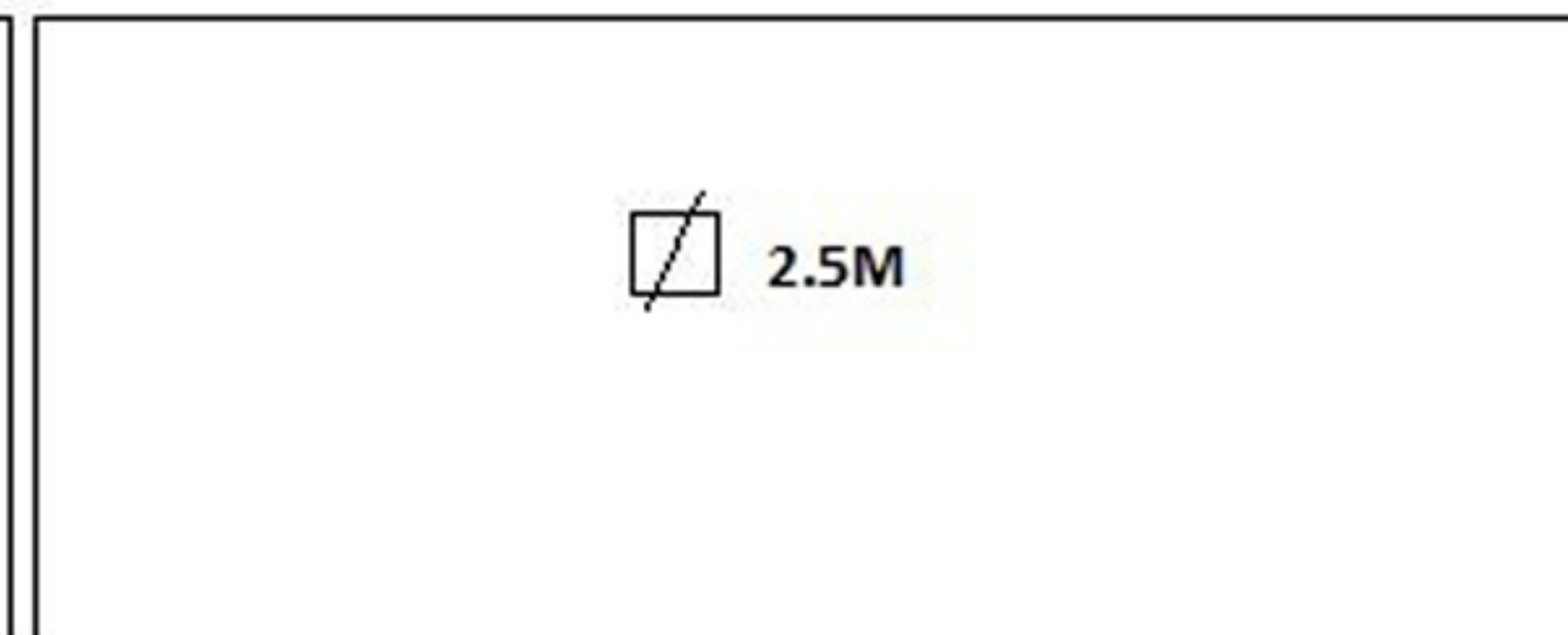
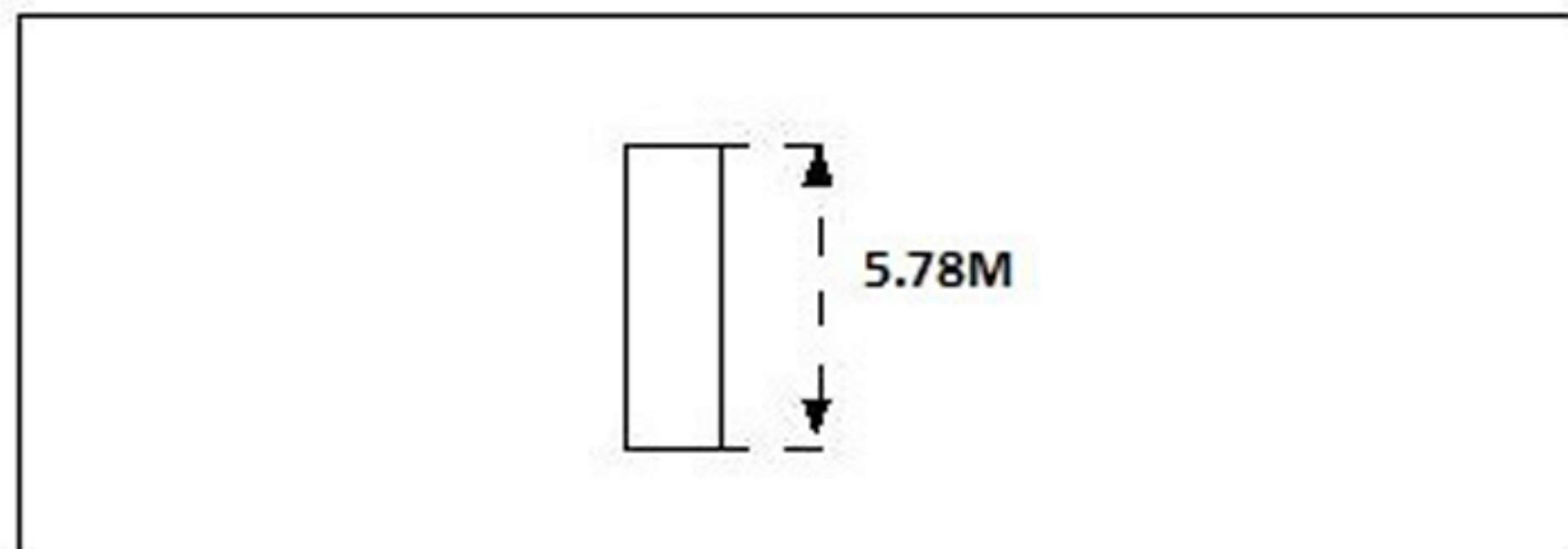
TOWERWORK LX320 70



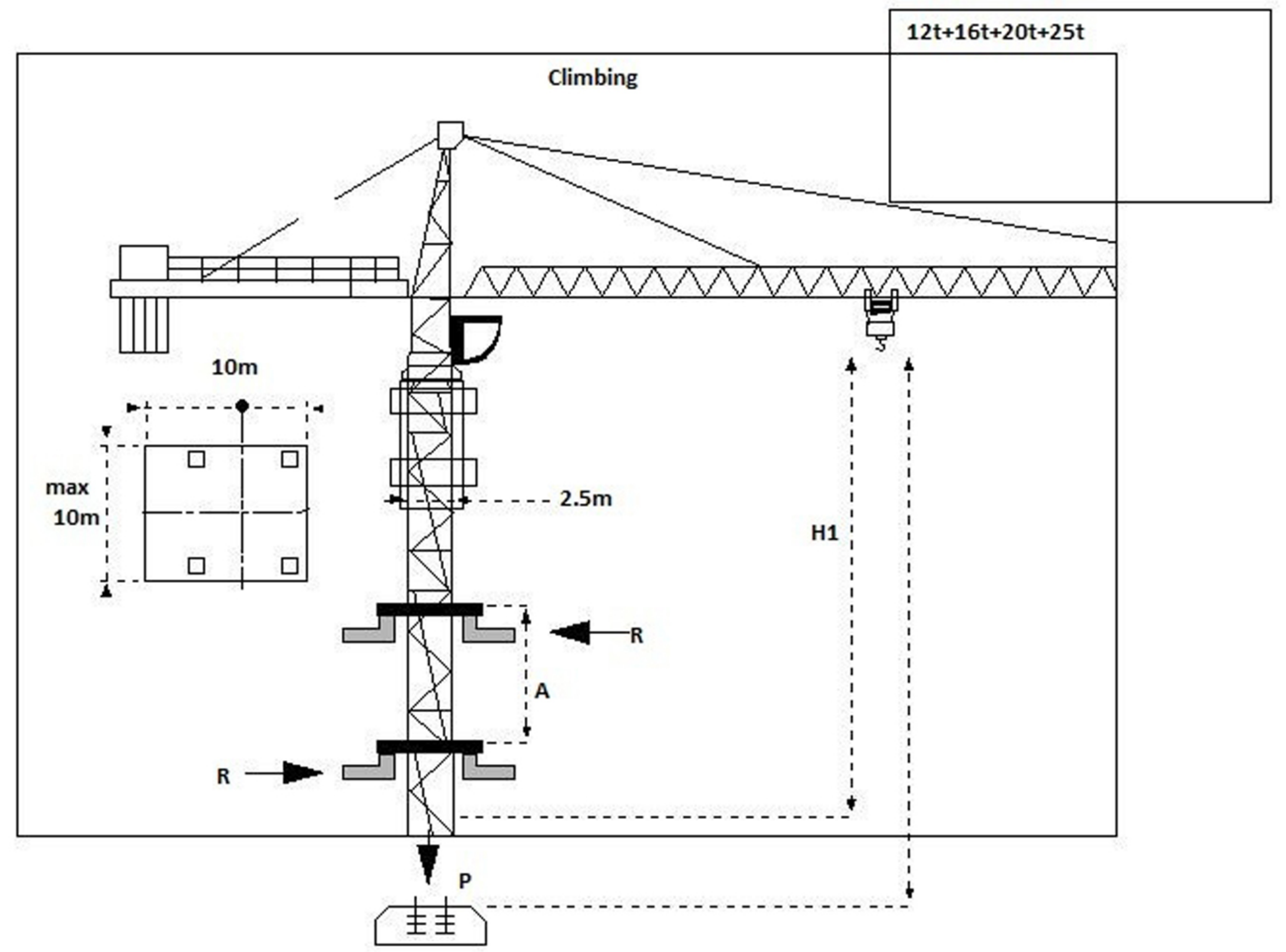
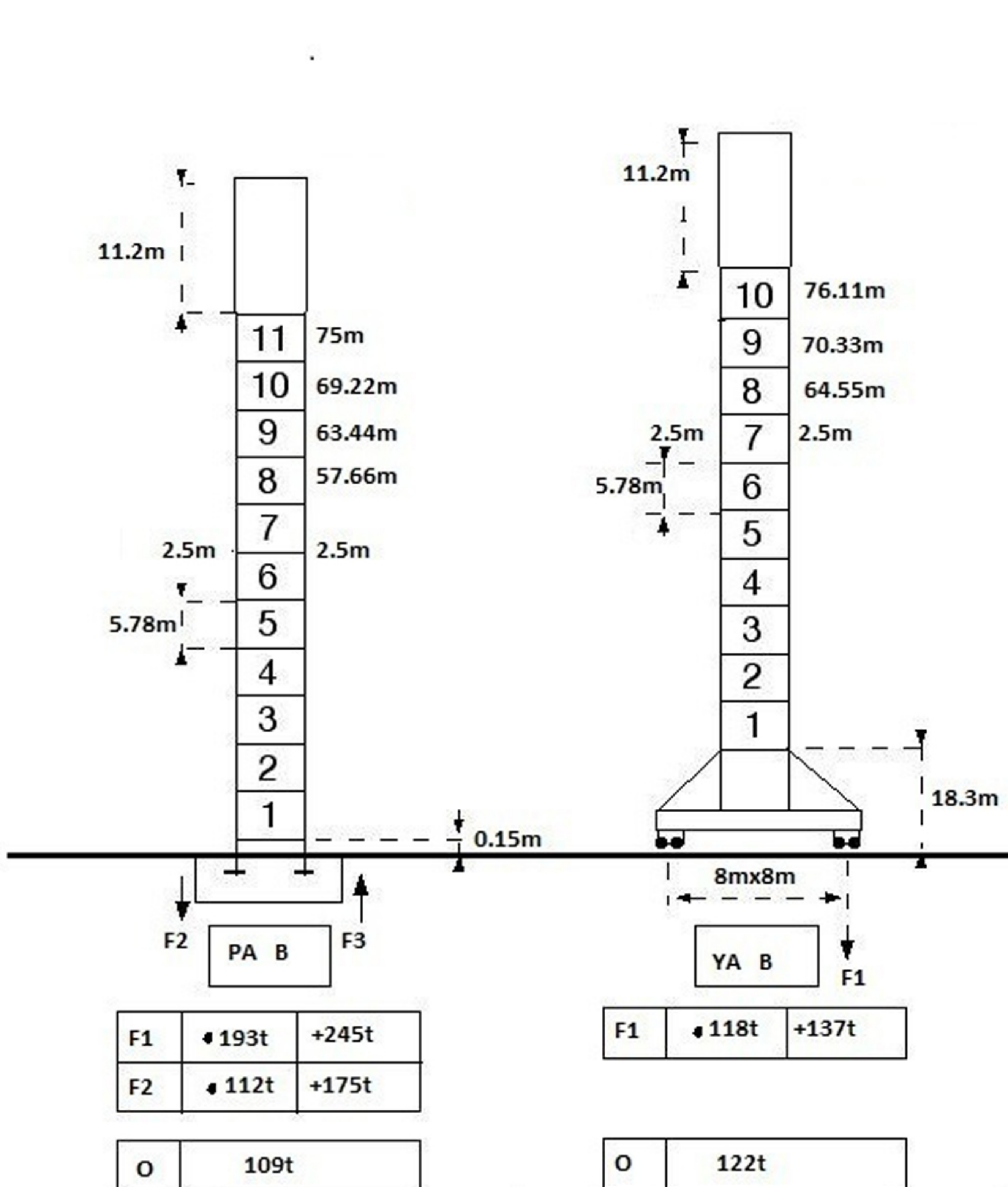
TOWERWORK LX320 70



BA 66 A



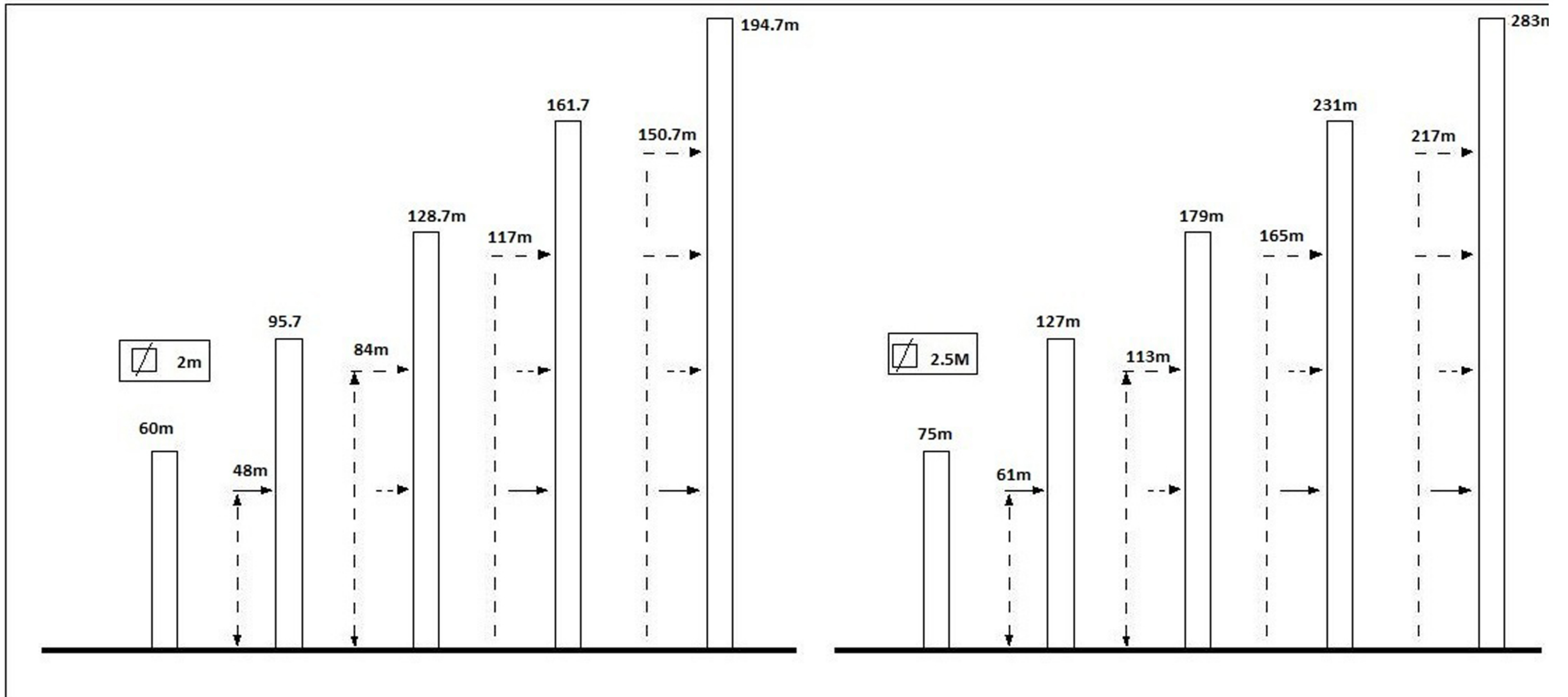
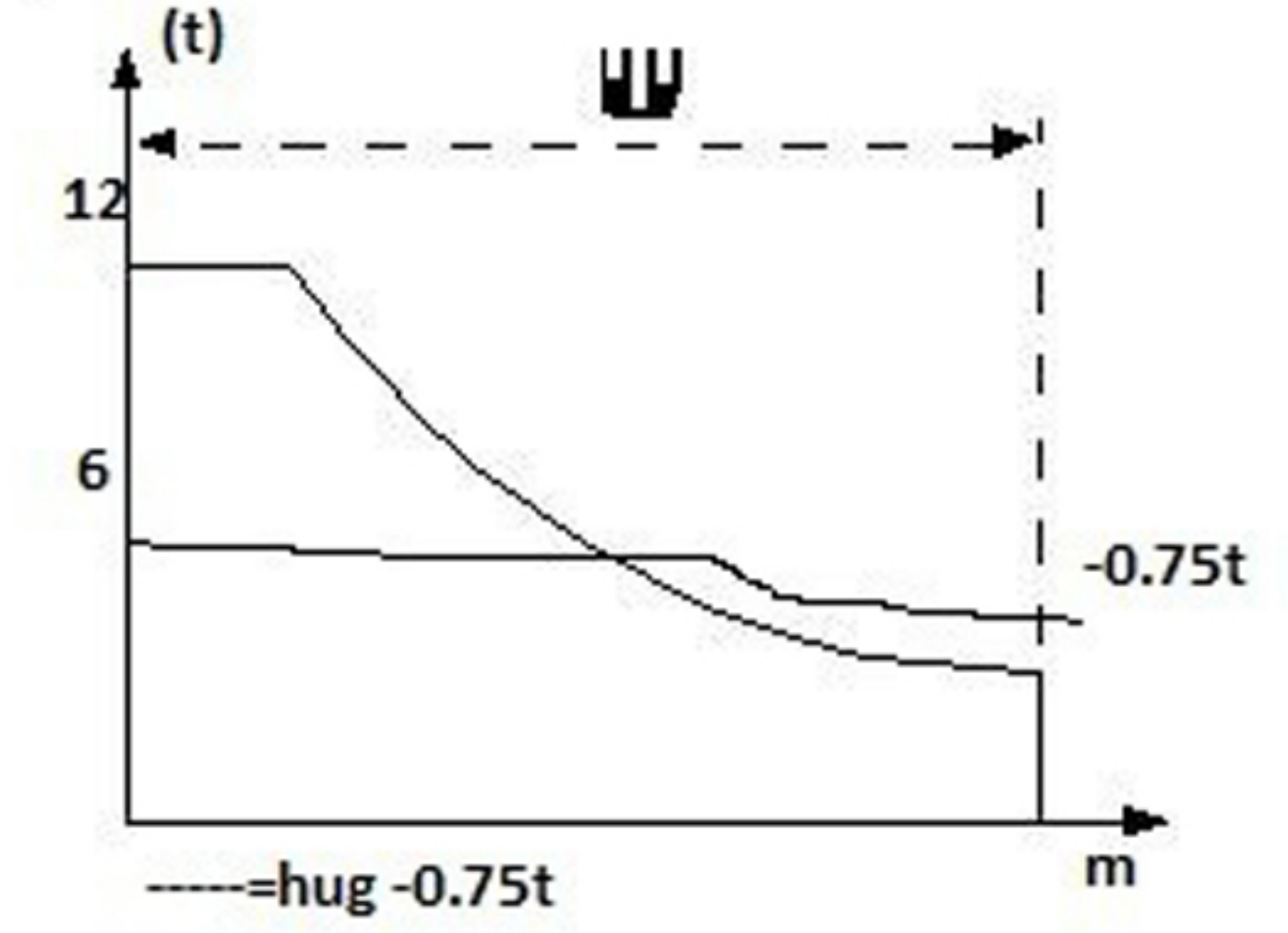
A Distance between collars
H1 Crane Height
P Crane weight (in service)
R Horizontal reaction





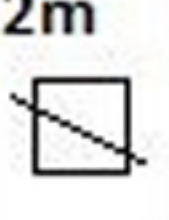

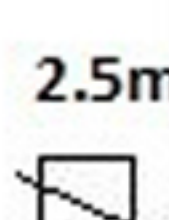



TOWERWORK LX320 70

LOAD DIAGRAMS

W / L	21.4	22	25	27	30	32	35	37	37.4	41.9	45	47	50	52	55	57	60	62	65	67	70	m
70m 3.1m	12	11.6	10	9.1	8	7.3	6.5	6.1	6	6	5.5	5.2	4.9	4.6	4.3	4.2	3.9	3.7	3.5	3.4	3.2	t
W / L	22.8	25	27	30	32	35	37	39	40.4	40.7	47	50	52	55	57	60	62	65				m
65m 3.1m	12	10.8	9.8	8.7	8	7.2	6.7	6.3	6	6	5.7	5.3	5	4.7	4.5	4.2	4.1	3.9				t
W / L	22.8	25	27	30	32	35	37	39	40.4	40.7	47	50	52	55	57	60						m
60m 3.1m	12	10.8	9.8	8.7	8	7.2	6.7	6.3	6	6	5.7	5.3	5	4.7	4.5	4.3						t
W / L	22.8	25	27	30	32	35	37	39	40.4	40.7	47	50	52	55								m
55m 3.1m	12	10.8	9.8	8.7	8	7.2	6.7	6.3	6	6	5.7	5.3	5	4.7								t
W / L	22.8	25	27	30	32	35	37	39	40.4	48.7	47	50										m
50m 3.1m	12	11.1	10.1	9.8	8.2	7.4	6.9	6.4	6	6	5.8	5.4										t
W / L	22.8	25	27	30	32	35	37	40	42	45												m
45m 3.1m	12	11.3	10.3	9.1	8.4	7.6	7.1	6.4	6	6.1												t
W / L	24.7	25	27	30	32	35	37	40														m
40m 3.1m	12	11.3	10.8	9.5	8.8	7.9	7.4	6.7														t
W / L	24.8	25	27	30	32	35																m
35m 3.1m	12	11.9	10.8	9.6	8.9	8																t
W / L	24.9	25	27	30																		m
30m 3.1m	12	11.9	10.9	9.6																		t



		m/min	t	m/min	t		ch-PS hp	kw
Hoisting		0=>114	1x1.5=>6	0=>80	2x3=>12	525	70	51.5
Trolleying				0=>85				185N.m
Slewing				0=>0.83 rpm				2x95N.m
Travelling	2m 							4x5 4x3.7
	2.5m 							6x7 6x5.2

TOWERWORK LX320 70

Hoisting Device

It adopts three-speed motor device to realize running a low speed while heavy loading and running at high speed while light loading.

It adopts hydraulic pushing bar brake to make the brake is always on braking position when the lifting device does not work. It has higher safety.

Slewing Gear

It adopts hydraulic coupler for transmission. Its work is steady and reliable.

When it rotates, there is no shaking or swing.

It can rotate with wind.

Trolleying Device

It adopts electromagnetic disk type brake.

Its running speed is high.

Its running is steady and reliable.

Standard Structure

The surface of the steel material is pre-treated.

The removal of gravitation is treated.

It adopts large plasma cutting.

It adopts auto welding.

Jack-up Device

It adopts outer side hydraulic jack-up

Its safety is higher.

Its lifting and falling is convenient and smooth.

Electric Elements

The electrical equipment adopts central control. It can automatically detect troubles, such as hitting by mistaken operation, overloading and surpass scale work, and send corresponding alarm of sound and light.

It adopts Schneider product.

Its overloading capacity is strong and its steadiness is good.