

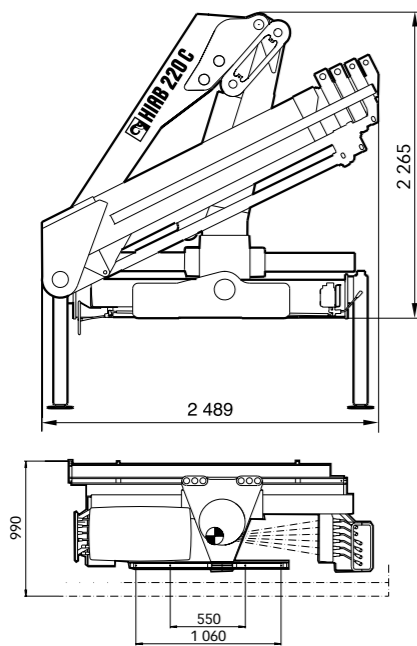
The HIAB 220 C – impressive ...

...and economical

You get a crane with impressive power, capacity and precision. The HIAB 220 C is remarkably economical in terms of space and weight. It only requires around 0.9 to 1.0 metres mounting space depending on model. And with standard models weighing between 2400 and 2800 kg, complete with 4.8 metres outrigger and support legs, the HIAB 220 C is designed to maximise your payload and the productivity of your trucks. The HIAB 220 C offers you these benefits, and more...

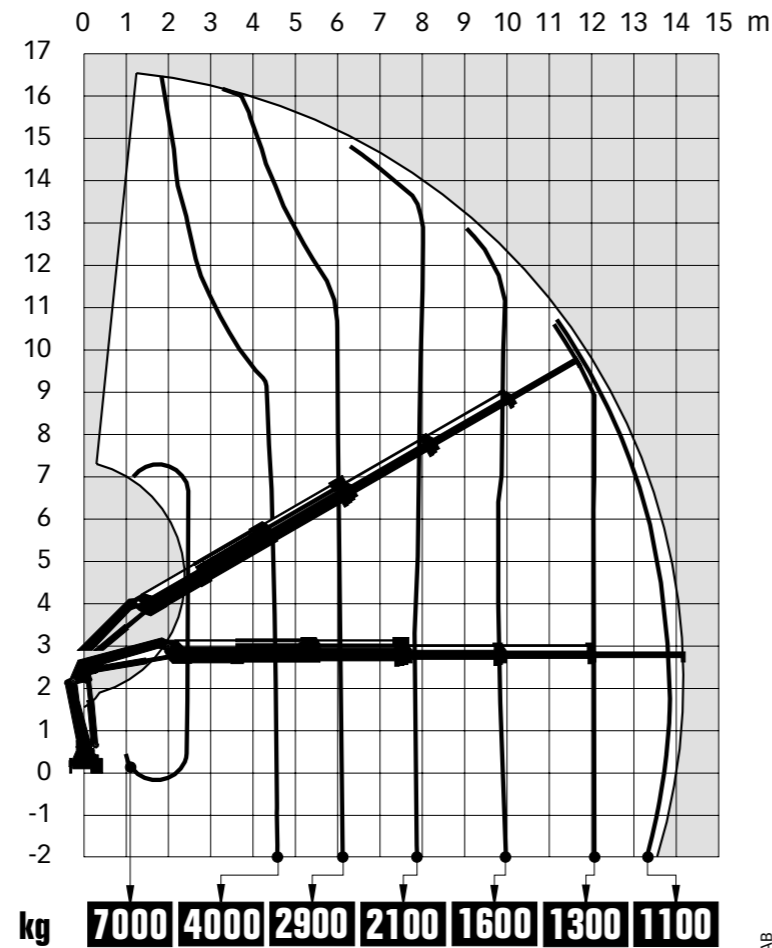
For example

- **High lifting capacities**, ranging from 18 to almost 20 tonne metres
- **Standard hydraulic outreach** from 8 to more than 14 metres
- **Manual boom extensions** offer increased outreach up to 18 metres
- **Low weight**
- Requires **minimal installation space**, maximising payload
- **Ideal for use with a wide range of hydraulic tools**
- **Hiab Valve 91** in combination with **CombiDrive remote control** ensures consistently smooth, precise load handling



Technical Data	HIAB 220 C-2	HIAB 220 C-3	HIAB 220 C-4	HIAB 220 C-5
Lifting capacity, max.	190 kNm (19.4 tm)	185 kNm (18.9 tm)	181 kNm (18.5 tm)	177 kNm (18.0 tm)
Hydraulic outreach, standard (m)	8.0	10.0	12.1	14.1
Outreach / lifting capacity (m / kg)	2.7 / 7 000 4.5 / 4 300 6.0 / 3 200 7.8 / 2 470	2.7 / 7 000 4.5 / 4 200 6.0 / 3 100 7.8 / 2 300 9.8 / 1 850	2.6 / 7 000 4.5 / 4 100 6.1 / 3 000 7.8 / 2 200 11.8 / 1 430	2.6 / 7 000 4.5 / 4 000 6.1 / 2 900 7.8 / 2 100 9.8 / 1 600 11.8 / 1 300 13.8 / 1 100
Outreach / lifting capacity, with manual boom extensions (m / kg)	9.8 / 1 900 11.8 / 1 500 13.9 / 1 200	11.8 / 1 500 13.8 / 1 200 15.9 / 850	13.9 / 1 150 15.9 / 850 18.1 / 600	15.8 / 850 18.0 / 600
Height - boom in horizontal stretched out position (mm)	2 795	2 795	2 795	2 795
Weight in standard version, with 4.8 m outrigger and support legs (kg)	2 410	2 560	2 690	2 800

HIAB 220 C-5



HIAB cranes have been built to meet the highest standards of safety and service life and have been thoroughly tested. Strength calculations have been carried out in accordance with the German DIN norm 15018, crane group B 3. Hiab's CE-marked cranes comply with the EU's Machinery Directive. Hiab's certified Quality Assurance System complies with the ISO 9001.

NOTE: Some of the items we describe in our literature may be extra equipment. Certain applications may require an official permit. We reserve the right to change technical specifications without prior notice.

For more information about the HIAB 220 C, or any other Hiab crane, please contact your local Hiab distributor.



DAI LIENG TRADING SDN. BHD.
 Ph.+60 (85) 655-855 Fax.+60 (85) 655-618
 Website: <http://www.dailieng.com.my>
 Email : info@dailieng.com.my

1294 GB 2.00 Printed in Finland Waasa Graphics AB



HIAB 220 C



The HIAB 220 C – all the speed and agility of a low-weight crane with heavyweight benefits



A high capacity, low weight solution in the medium crane sector.

This outstanding crane packs the power and strength of a heavyweight with the handling precision, manoeuvrability and safety to outclass other mid-range cranes.

The HIAB 220 C is a mid-range crane with big crane benefits. With lifting capacities close up to 20 tonne metres, this powerhouse of a crane gives you genuine heavyweight performance. But even more importantly, it combines sheer brute strength with precision control and handling. The HIAB 220 C also features a major advance in hydraulic technology, the Hiab Valve 91. This pressure compensated valve produces a faster, smoother, more gentle crane response with a consistent and unerring precision that corresponds exactly to the operator's lever movements.

Remote control increases productivity

Also fitted as standard is the HIAB CombiDrive remote control system. With CombiDrive, the crane's efficiency and productivity is even further enhanced. The system allows the crane operator to be his own loading assistant and the crane can be operated remotely either from the platform of the vehicle or from the best vantage point possible.

Taking safety to new heights

CombiDrive in combination with SPACE, takes crane operating safety to new heights. SPACE is a Hiab-developed computer-controlled safety system which monitors the functions of the crane at all times. It senses when the crane is overloaded or operating beyond its limits, at which point it overrides the operator controls and brings the handling operation to a smooth, safe and immediate halt.

