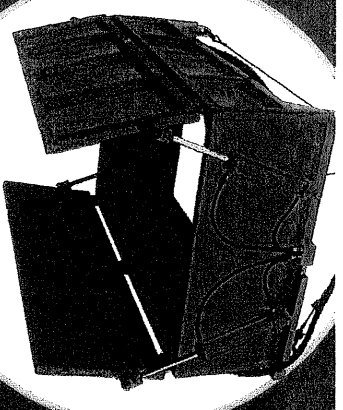
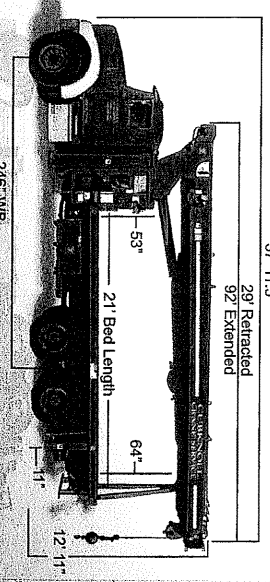
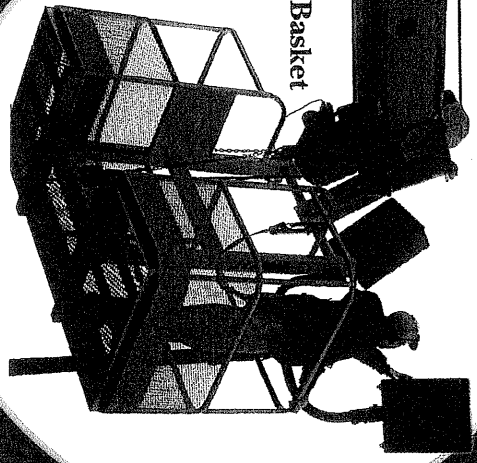


Hydraulic Scale Pan  
-remote operation

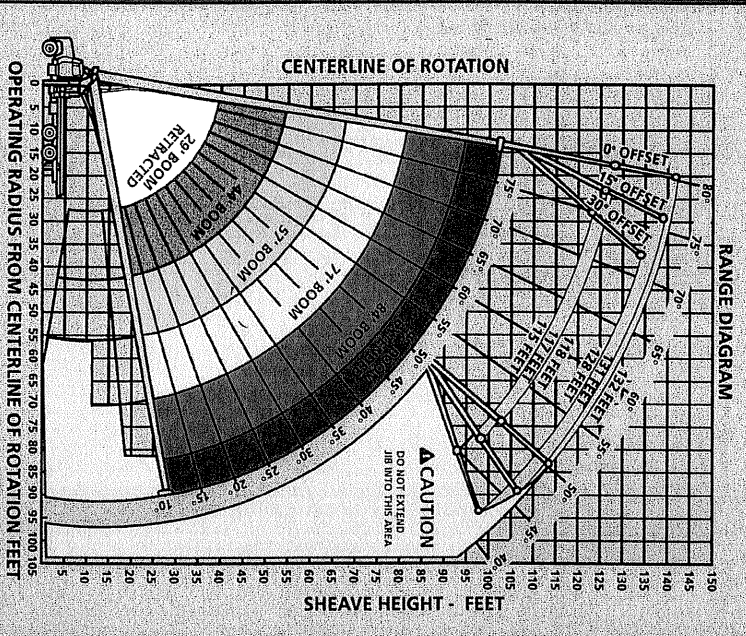


2 Man Basket



ADVANTAGES

RANGE DIAGRAM



Load Ratings in lbs. with outriggers extended



Operating Radius ft.	Loaded Boom Angle			
	29 ft.	44 ft.	57 ft.	71 ft.
5	78	47000		
8	71	36800		
10	67	30900		
12	62	26100		
14	58	21900		
18	53	18800		
20	41	14200		
25	21	10400		
30				
35				
40				
45				
50				
55				
60				
65				
70				
75				
80				

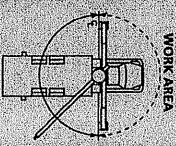
Operating Radius ft.	Loaded Boom Angle			
	29 ft.	44 ft.	57 ft.	71 ft.
5	78	20300		
8	75	20300		
10	72	20300		
12	67	17400		
14	62	16800		
18	57	15900		
20	41	13400		
25	21	10400		
30				
35				
40				
45				
50				
55				
60				
65				
70				
75				
80				

NOTE: RATINGS ABOVE THE HEAVY LINE ARE BASED ON STRUCTURAL COMPETENCE AND NOT ON MACHINE STABILITY

JIB capacities for all boom lengths

Loaded Boom Angle	50	55	60	65	70	75
Retracted 25 ft. JIB	725	1025	1525	2325	3225	4325
Extended 44 ft. JIB	425	725	1125	1525	2025	2525

Area of Operation



360 FULL CAPACITY WORK AREA

Deductions from rated loads for handling devices

Overhaul ball: 125 lbs.

1. Sheave load: block 200 lbs.

2. Sheave load: block 250 lbs.

Auxiliary sheave: 50 lbs.

Stowed jib Deductions

DO NOT OPERATE WITHIN 10 FT. OF OVERHEAD POWER LINES

