

Hydraulic crawler crane

**BORAMTECH**

# BORA 50



**max.lifting capacity 50 tons**

# Lifting Features

**Table 1-1 Bora 50 Crawler crane boom operating performance detailed list**

Work scope(m) \ Boom length (m)	13	16	19	22	25	28	31
3.7	50.00						
4.0	43.00	45.00					
4.5	36.00	37.00	37.50				
5.0	31.00	31.00	30.50	29.50			
5.5	26.50	27.30	27.00	27.00	26.00		
6.0	22.00	23.40	24.00	24.00	24.00	22.50	
7.0	19.00	19.00	19.00	19.00	19.50	18.80	18.50
8.0	15.50	15.50	16.00	16.00	15.80	15.20	15.00
10.0	11.00	12.00	11.50	11.50	11.40	11.50	11.30
12.0	9.00	9.50	9.50	9.00	8.90	8.80	8.60
14.0		7.50	7.50	7.50	7.30	7.40	7.10
16.0			6.50	6.50	6.40	6.40	6.00
18.0				5.40	5.40	5.30	5.00
20.0				4.60	4.50	4.30	4.20
22.0					3.80	3.70	3.50
24.0						3.50	3.00
26.0							2.80
28.0							
30.0							
32.0							
34.0							

## Technical Data

**Bora 50** Crawler Crane is designed on the base of accumulation of manufacturing experience for many years, in order to meet market demands and perfect crawler crane line. Excellent lifting capacity, 360° full slewing operation and extensible crawlers are available. Main boom length is from 13m to 52m, fix jib length is from 9m to 13m.

### Main Features

1. Open pump-controlled variable displacement hydraulic system, constant-power control. Close pump-controlled system for slewing operation, fine motion control and stable and reliable movements.
2. Four lattice boom sections, light weight, heavy load bearing capacity. Maximum main boom length is 52m. The combination of 52m main boom and 13m jib
3. Plug-in connections for crawlers and frame, easy assembly.
4. Black-box function of effective monitoring working condition data is convenient for trouble analysis and treatment.
5. Easy transport. Transport weight of max. part is not more than 31t. Transport weight of max. part is not more than 28t with crawlers removed.
6. With single top fixed, quick lifting of light load is available, and the working efficiency is improved.

Max. Rated Lifting Capacity	50000 kg
Max. Hoisting Moment	1815 kN.m
Main Boom	13-52 m
Boom working angle	30-80 (°)
Main lifting speed (single rope)	0-65 m/min
Auxiliary lifting speed (single rope)	0-65 m/min
Derricking speed	0-52m/min
Max. Gradability	20 (°)
Slewing Speed	0-1.5 r/min
Max. Travel Speed	0-1.1 Km/h
Ground Pressure	0.069 Mpa
Max. Power of engine	117.6 kw
Jib	max 13 m
Offset angle of jib	10/30 (°)



**Table 1-2Bora 50 Crawler crane boom operating performance detailed list**

<b>Boom length Work scope(m)</b> (m)	<b>34</b>	<b>37</b>	<b>40</b>	<b>43</b>	<b>46</b>	<b>49</b>	<b>52</b>
3.7							
4.0							
4.5							
5.0							
5.5							
6.0							
7.0							
8.0	15.00	14.90					
10.0	11.20	11.00	10.80	10.70	10.40	10.30	
12.0	8.60	8.60	8.50	8.40	8.20	8.10	8.00
14.0	7.00	6.80	6.50	6.60	6.50	6.30	6.20
16.0	5.80	5.80	5.70	5.50	5.30	5.00	5.00
18.0	4.70	4.60	4.50	4.40	4.30	4.20	4.10
20.0	4.10	4.00	3.80	3.80	3.70	3.50	3.30
22.0	3.50	3.40	3.30	3.20	3.00	2.80	2.70
24.0	2.90	3.00	2.80	2.60	2.50	2.30	2.10
26.0	2.60	2.50	2.30	2.10	2.00	1.80	1.60
28.0		2.10	1.90	1.80	1.60	1.40	1.20
30.0		1.80	1.60	1.50	1.30	1.20	1.10
32.0		1.50	1.50	1.30	1.10	1.00	0.90
34.0			1.40	1.20	1.00	0.90	0.80



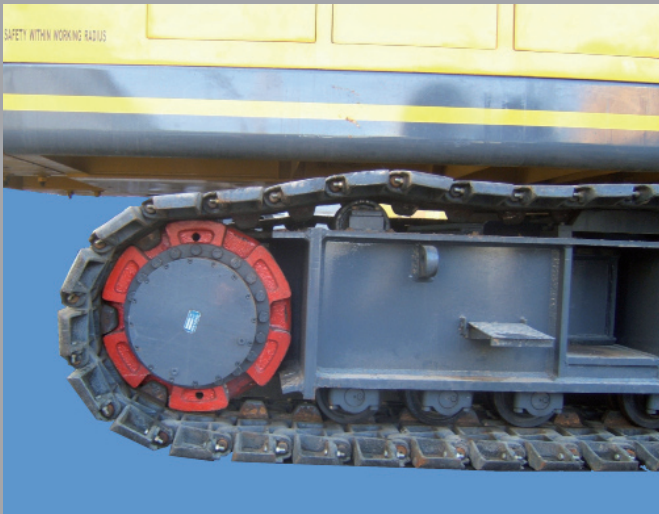
**Table 2-2 Bora 50 Crawler crane jib operating performance detailed list**

Boom length(m)	34						37						
	9.15		12.20		15.25		9.15		12.20		15.25		
Jib length(m)													
Jib offset angle Work(°)	10	30	10	30	10	30	10	30	10	30	10	30	
Scope (m)													
9													
10	4.00												
11	4.00	3.80						4.00					
12	4.00	3.80		3.00		4.00		3.80					
13	4.00	3.30	3.80	3.00		4.00		3.30	3.80	3.00			
14	4.00	3.30	3.80	3.00		4.00		3.30	3.80	3.00			
15	4.00	3.30	3.80	2.70	3.00		4.00		3.30	3.80	3.00		
16	4.00	3.30	3.80	2.70	3.00		4.00		3.30	3.80	2.70	3.00	
18	4.00	3.30	3.80	2.70	3.00	2.00	4.00	3.30	3.80	2.70	3.00	2.00	
20	4.00	3.30	3.80	2.70	3.00	2.00	3.90	3.30	3.80	2.70	3.00	2.00	
22	3.45	3.30	3.45	2.70	3.00	2.00	3.40	3.30	3.40	2.70	3.00	2.00	
24	3.00	3.00	3.00	2.70	3.00	2.00	2.90	2.90	2.90	2.70	2.90	2.00	
26	2.60	2.60	2.60	2.60	2.60	2.00	2.55	2.55	2.55	2.55	2.55	2.00	
28	2.30	2.30	2.30	2.30	2.30	2.00	2.20	2.20	2.20	2.20	2.20	2.00	
30	2.00	2.00	2.00	2.00	2.00	2.00	1.95	1.95	1.95	1.95	1.95	1.95	
32							1.70	1.70	1.70	1.70	1.70	1.70	
34													

**Table 2-3 Bora 50 Crawler crane jib operating performance detailed list**

Boom length(m)	40						43					
Jib length(m)	9.15		12.20		15.25		9.15		12.20		15.25	
Jib off-set angle Work(°)	10	30	10	30	10	30	10	30	10	30	10	30
Scope (m)												
9												
10												
11												
12	4.00						4.00					
13	4.00		3.80				4.00		3.80			
14	4.00	3.30	3.80		3.00		4.00		3.80		3.00	
15	4.00	3.30	3.80		3.00		4.00	3.30	3.80		3.00	
16	4.00	3.30	3.80	2.70	3.00		4.00	3.30	3.80		3.00	
18	4.00	3.30	3.80	2.70	3.00	2.00	4.00	3.30	3.80	2.70	3.00	
20	4.00	3.30	3.80	2.70	3.00	2.00	3.80	3.30	3.80	2.70	3.00	2.00
22	3.80	3.30	3.30	2.70	3.00	2.00	3.20	3.20	3.20	2.70	3.00	2.00
24	2.85	2.85	2.85	2.70	2.85	2.00	2.75	2.75	2.75	2.70	2.75	2.00
26	2.45	2.45	2.45	2.45	2.45	2.00	2.40	2.40	2.40	2.40	2.40	2.00
28	2.15	2.15	2.15	2.15	2.15	2.00	2.05	2.05	2.05	2.05	2.05	2.00
30	1.85	1.85	1.85	1.85	1.85	1.85	1.85	1.80	1.80	1.80	1.80	1.80
32	1.65	1.65	1.65	1.65	1.65	1.65	1.50	1.50	1.50	1.50	1.50	1.50
34	1.40	1.40	1.40	1.40	1.40	1.40	1.30	1.30	1.30	1.30	1.30	1.30

## Bora 50 Crawler crane part's show



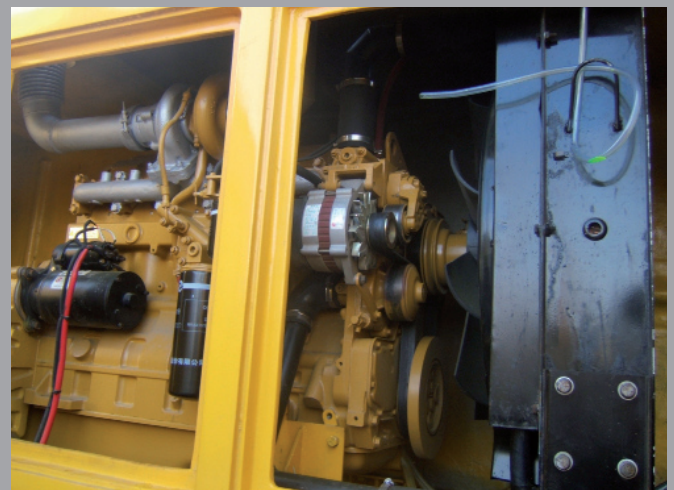
1.Travel Gear



2.Safety devices



3.Slewing gear



4.Engine



5.Winch and elevation



6.Operator's cab



Bora 50 Crawler crane picture's show



# BORAMTECH



BORAMTECH  
Drilling Piling GmbH  
Köpenicker Allee 123-135  
10318 Berlin  
Germany  
Fon +49 30 756544- 0  
Fax +49 30 756544-11  
[www.boramtech.com](http://www.boramtech.com)  
[info@boramtech.com](mailto:info@boramtech.com)