

7250

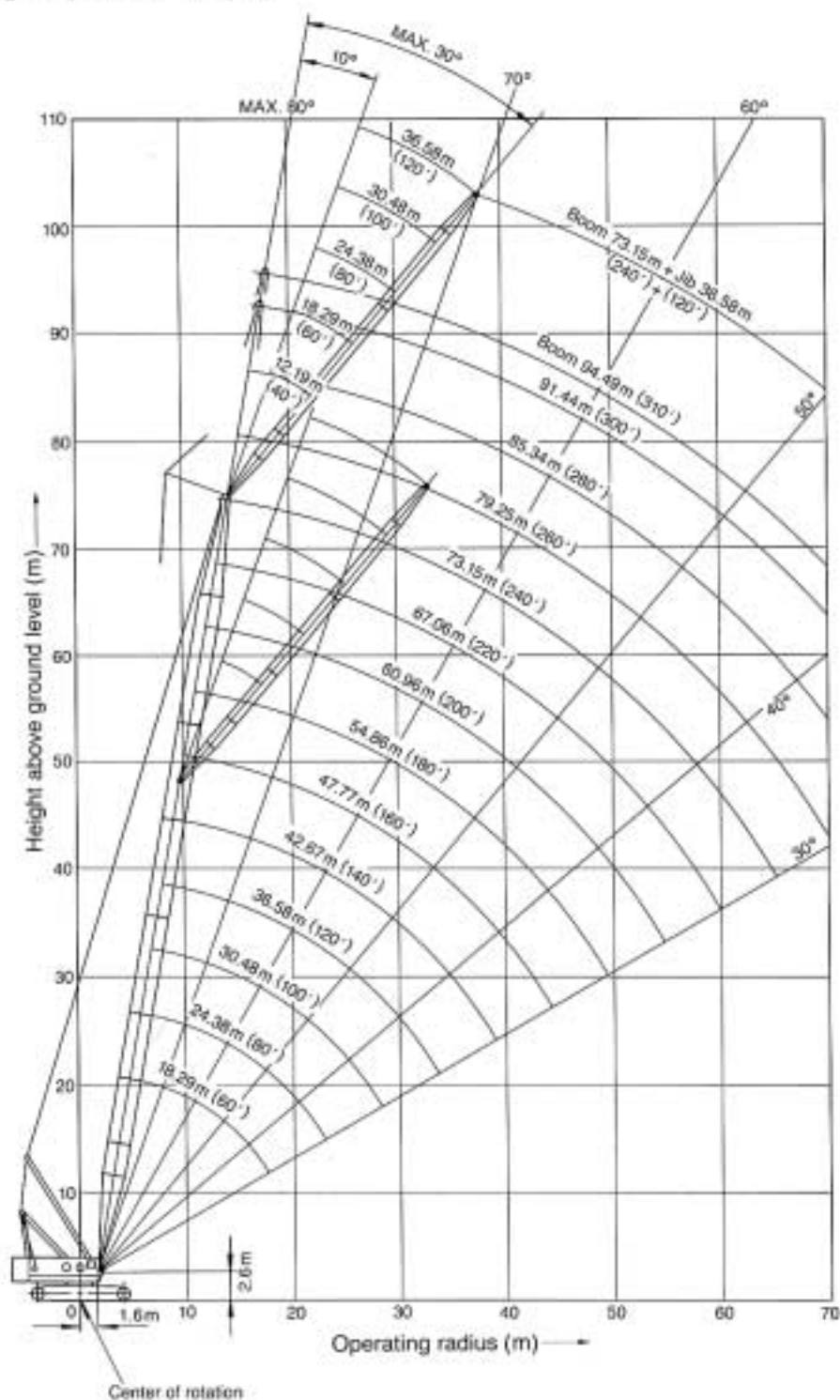
Hydraulic Crawler Crane

KOBELCO

Max. Lifting Capacity:
250 Metric Tons at 5 Meters

Max. Total Length
(Boom + Luffing Jib): 116.62 Meters

Working ranges (with fixed jib)



Boom Lifting Capacity

Heavy duty boom with standard counter-weight—rated loads in metric tons for 360° swing

Unit: ton

Boom Length (m) \ Operating radius (m)	16.29 (60')	21.34 (70')	24.38 (80')	27.43 (90')	30.48 (100')	33.53 (110')	36.58 (120')	39.62 (130')	42.67 (140')
5.0	250.0								
5.5	225.0	225.0							
6.0	205.0	205.0	203.4						
7.0	173.0	173.0	173.0	173.0					
8.0	150.0	150.0	150.0	150.0	150.0	144.5			
9.0	123.6	123.7	123.9	124.0	123.9	123.9	123.9	120.1	
10.0	104.4	104.5	104.6	104.7	104.6	104.6	104.5	104.5	104.4
12.0	79.3	79.3	79.4	79.4	79.3	79.2	79.1	79.0	79.0
14.0	63.6	63.5	63.6	63.6	63.4	63.3	63.2	63.1	63.0
16.0	52.8	52.8	52.7	52.7	52.6	52.5	52.3	52.2	52.1
18.0	46.7/17.5m	44.9	44.9	44.8	44.7	44.5	44.4	44.2	44.1
20.0		39.0	38.9	38.9	38.7	38.5	38.3	38.2	38.1
22.0		38.6/20.2m	34.3	34.2	34.0	33.8	33.6	33.5	33.3
24.0			32.7/22.8m	30.4	30.2	30.0	29.8	29.7	29.5
26.0				28.1/25.5m	27.1	26.9	26.7	26.5	26.4
30.0					24.4/28.1m	22.1	21.8	21.7	21.5
32.0						21.4/30.7m	20.0	19.8	19.6
34.0							18.8/33.4m	18.1	17.9
36.0								16.7	16.5
40.0									14.9/38.7m

Notes:

- Deduct weight of hook block, slings, and all other load handling accessories from main boom and jib ratings to obtain actual hoistable loads. When boom is used with jib attached, the weight of the jib and accessories of jib must also be deducted.
- Luffing jib ratings are based on main boom and jib angles of 85°. Erection weight (15t) is required when boom length is 64.01 m or longer. Contact Kobe Steel for jib and main boom rated loads when boom angle is 65° or 75°.
- Operating radius is the horizontal distance from centerline of rotation to a vertical line through the center of gravity of the load. Ratings do not exceed 75% of tipping load.
- Ratings shown are based on freely suspended load with machine standing on firm, level, uniformly supporting surface and make no allowance for such factors such as wind effect on lifted load, ground conditions, out of level. Operating speeds or any other condition that could be detrimental to the safe operation of this equipment. The operator, therefore, has the responsibility to judge the existing conditions and reduce lifted loads and operating speeds accordingly.
- At radii and boom lengths where no ratings are shown on plate, operation is not intended nor approved.
- Boom backstops are required for all boom lengths.
- Gantry must be in fully raised position for all crane operations except when luffing jib is used, at which time gantry must be in intermediate position.
- Mast is required for all booms. Mid-point suspensions are required for booms 76.20m and longer.

Main hook rated loads in metric tons

Number of Parts of Main Hoist Reaving	1	2	3	4	5	6	7
Max. Load	12.5	25	37.5	50.0	62.5	75	85.0

Number of Parts of Main Hoist Reaving	8	9	10	11	12	13	14
Max. Load	95.0	105.0	120.0	130.0	140.0	150.0	160.0

Number of Parts of Main Hoist Reaving	16	18	20	22	24
Max. Load	180.0	200.0	215.0	225.0	250.0

Jib hook rated loads in metric tons

Number of Parts of Jib Hoist Reaving	1	2
Max. Load	10	20

Weight of hook blocks

Lifting Capacity ton (lb)	250 (551,000)	100 (220,000)	65 (143,000)	30 (66,000)	13 (29,000)
No. of Sheaves	12	5	3	1	0
Weight ton (lb)	4.5 (9,920)	1.7 (3,700)	1.1 (2,430)	0.96 (2,120)	0.46 (1,010)

Light duty boom with standard counterweight—rated loads in metric tons for 360° swing

Unit: metric ton

Boom Length (m) Operating radius (m)	27.43 (90')	30.48 (100')	33.53 (110')	36.58 (120')	39.62 (130')	42.67 (140')	45.72 (150')	48.77 (160')	51.82 (170')	54.86 (180')	57.91 (190')	60.96 (200')
5.0												
5.5												
6.0												
7.0	100.0											
8.0	100.0	100.0										
9.0	100.0	100.0	100.0									
10.0	100.0	100.0	100.0	100.0	100.0							
12.0	80.1	80.0	79.9	79.9	79.7	79.7	79.6	79.5	79.3	74.9	69.4	
14.0	64.3	64.2	64.0	64.0	63.8	63.7	63.6	63.5	63.4	63.3	63.1	61.6
16.0	53.5	53.3	53.2	53.1	52.9	52.8	52.7	52.6	52.4	52.3	52.1	52.0
18.0	45.6	45.5	45.3	45.2	45.0	44.9	44.8	44.6	44.4	44.3	44.1	44.0
20.0	39.7	39.5	39.3	39.2	39.0	38.8	38.7	38.6	38.4	38.2	38.0	37.9
22.0	35.0	34.8	34.6	34.4	34.2	34.1	34.0	33.8	33.6	33.5	33.2	33.2
24.0	31.2	31.0	30.8	30.6	30.4	30.3	30.2	30.0	29.8	29.6	29.4	29.3
26.0	28.9/25.5m	27.9	27.7	27.5	27.3	27.1	27.0	26.8	26.6	26.4	26.2	26.1
30.0		25.2/28.1m	22.9	22.7	22.5	22.3	22.1	21.9	21.7	21.5	21.3	21.2
32.0			22.2/30.7m	20.8	20.6	20.4	20.2	20.0	19.8	19.6	19.4	19.3
34.0				19.6/33.4m	18.9	18.7	18.6	18.3	18.1	17.9	17.7	17.6
38.0					17.5	16.0	15.8	15.6	15.4	15.1	14.9	14.8
40.0						15.6/38.7m	14.7	14.5	14.2	14.0	13.7	13.6
42.0							14.0/41.3m	13.4	13.2	13.0	12.7	12.6
44.0								12.6/43.9m	12.3	12.0	11.8	11.6
48.0									11.2/46.6m	10.5	10.2	10.0
50.0										10.0/49.2m	9.5	9.3
52.0											8.9/51.9m	8.7
56.0												8.0/54.5m

Unit: metric ton

Boom Length (m) Operating radius (m)	64.01 (210')	67.06 (220')	70.10 (230')	73.15 (240')	76.20 (250')	79.25 (260')	82.30 (270')	85.34 (280')	88.39 (290')	91.44 (300')	94.49 (310')
5.0											
5.5											
6.0											
7.0											
8.0											
9.0											
10.0											
12.0											
14.0	59.8	55.3	50.4								
16.0	51.8	51.8	49.1	45.5	41.9	37.7					
18.0	43.8	43.6	43.5	43.6	40.8	36.7	33.4	31.0	28.8	26.9	
20.0	37.7	37.5	37.4	37.5	37.6	35.7	32.4	30.0	27.8	26.0	23.6
22.0	32.9	32.7	32.6	32.7	32.8	32.8	31.4	29.0	26.9	25.1	22.7
24.0	29.0	28.8	28.7	28.8	28.9	28.9	28.6	27.9	25.9	24.1	21.8
26.0	25.8	25.6	25.5	25.6	25.7	25.7	25.4	25.2	24.9	23.2	20.9
28.0	23.1	22.9	22.8	22.9	23.0	23.0	22.7	22.5	22.2	22.0	20.0
30.0	20.9	20.7	20.5	20.7	20.7	20.7	20.4	20.2	19.9	19.7	19.1
32.0	18.9	18.7	18.6	18.7	18.8	18.7	18.5	18.3	18.0	17.7	17.7
36.0	15.7	15.5	15.4	15.5	15.6	15.5	15.3	15.0	14.7	14.5	14.5
40.0	13.3	13.0	12.9	13.0	13.1	13.0	12.8	12.5	12.2	12.0	12.0
44.0	11.3	11.1	10.9	11.0	11.1	11.0	10.8	10.5	10.2	10.0	9.9
48.0	9.7	9.4	9.3	9.4	9.5	9.4	9.1	8.9	8.5	8.3	8.2
52.0	8.3	8.1	7.9	8.0	8.1	8.0	7.7	7.4	6.9	6.7	6.6
58.0	6.9/57.1m	6.4	6.1	6.2	6.3	6.2	5.8	5.4	5.0	4.7	4.6
60.0		5.9/59.8m	5.5	5.7	5.8	5.6	5.2	4.9	4.5	4.2	4.0
64.0			5.0/62.4m	4.7	4.8	4.6	4.2	3.9	3.5	3.2	3.0
66.0				4.5/65.1m	4.4	4.2	3.8	3.4	3.0	2.7	2.6
68.0					4.0/67.7m	3.8	3.4	3.0	2.6	2.3	2.1

Fixed Jib Lifting Capacity

Jib rated loads in metric tons—360° work area

Unit: metric ton

Operating Radius in Meters	45.72m (150') Boom										Operating Radius in Meters	
	12.19m (40') Jib		18.29m (60') Jib		24.38m (80') Jib		30.48m (100') Jib		36.58m (120') Jib			
	Offset Angle		Offset Angle		Offset Angle		Offset Angle		Offset Angle			
	10°	30°	10°	30°	10°	30°	10°	30°	10°	30°		
14	25.0										14	
16	25.0										16	
18	25.0	24.9	22.7			16.9					18	
20	25.0	23.7	22.3			16.5		11.8			20	
22	25.0	22.6	21.8	16.2		16.2		11.6			22	
24	25.0	21.7	21.2	15.6		15.9		11.4		7.6	24	
26	25.0	20.8	20.7	14.9		15.6	12.9	11.2		7.4	26	
28	22.9	20.0	20.2	14.3		15.3	12.3	10.9		7.3	28	
30	20.9	19.1	19.7	13.7		15.1	11.8	10.7	9.3	7.1	30	
34	17.2	17.2	17.2	12.4		14.1	10.9	10.3	8.9	6.8	6.1	34
38	14.3	14.8	14.8	11.2		12.6	10.1	9.9	8.2	6.6	5.9	38
42	12.1	12.4	12.5	10.2		11.4	9.5	9.6	7.6	6.4	5.7	42
46	10.3	10.5	10.7	9.2		10.2	8.9	9.2	7.0	6.2	5.6	46
50	8.6	8.8	9.1	8.3		9.0	8.1	8.4	6.6	5.9	5.4	50
58			6.5	6.7		6.9	6.8	6.8	5.8	5.3	5.0	58
66								5.4/62m	5.1	4.8	4.5	66
74									4.8/70m	4.1	4.2	74

Operating Radius in Meters	51.82m (170') Boom										Operating Radius in Meters	
	12.19m (40') Jib		18.29m (60') Jib		24.38m (80') Jib		30.48m (100') Jib		36.58m (120') Jib			
	Offset Angle		Offset Angle		Offset Angle		Offset Angle		Offset Angle			
	10°	30°	10°	30°	10°	30°	10°	30°	10°	30°		
14											14	
16	25.0										16	
18	25.0		23.0								18	
20	25.0	24.4	22.5			16.7					20	
22	25.0	23.3	22.1			16.4		11.7			22	
24	25.0	22.4	21.7	15.8		16.1		11.5		7.6	24	
26	25.0	21.5	21.3	15.2		15.8		11.3		7.5	26	
28	22.8	20.7	21.0	14.6		15.5	12.6	11.1		7.3	28	
30	20.4	20.0	20.7	14.1		15.3	12.1	10.9		7.2	30	
34	16.7	17.4	17.1	13.2		14.0	11.2	10.5	9.1	6.9	34	
38	13.8	14.4	14.4	12.0		12.9	10.4	10.1	8.5	6.7	5.9	38
42	11.6	12.0	12.1	10.8		11.3	9.5	9.8	7.9	6.5	5.8	42
46	9.6	10.0	10.2	9.6		9.9	8.7	9.4	7.4	6.3	5.6	46
50	7.9	8.2	8.4	8.4		8.6	7.8	9.1	7.0	6.1	5.4	50
58	6.4/54m	5.4	5.8	6.1		6.2	6.2	6.8	5.8	5.8	5.1	58
66			4.7/62m			4.2	4.5	4.7	4.6	4.8	4.7	66
74							3.7/70m	3.1	3.4	3.4	3.6	74
82										2.7/78m	2.4	82

Operating Radius in Meters	57.91m (190') Boom										Operating Radius in Meters	
	12.19m (40') Jib		18.29m (60') Jib		24.38m (80') Jib		30.48m (100') Jib		36.58m (120') Jib			
	Offset Angle		Offset Angle		Offset Angle		Offset Angle		Offset Angle			
	10°	30°	10°	30°	10°	30°	10°	30°	10°	30°		
14											14	
16	25.0										16	
18	25.0		23.2								18	
20	25.0	25.0	22.8			16.8					20	
22	25.0	24.0	22.4			16.5					22	
24	25.0	23.0	22.0	16.2		16.2		11.6			24	
26	25.0	22.2	21.6	15.6		16.0		11.4		7.6	26	
28	22.2	21.4	21.3	15.0		15.7	12.0	11.2		7.4	28	
30	19.9	20.7	20.5	14.5		15.5	12.4	11.0		7.3	30	
34	16.1	16.9	16.7	13.6		15.0	11.5	10.6	9.0	7.0	34	
38	13.2	13.9	13.8	12.4		14.3	10.8	10.1	8.6	6.8	5.9	38
42	10.8	11.5	11.5	11.4		12.0	10.1	9.7	8.2	6.6	5.8	42
46	8.7	9.3	9.4	10.3		10.0	9.4	9.3	7.7	6.4	5.6	46
50	7.0	7.5	7.6	8.4		8.2	8.6	8.9	7.3	6.2	5.5	50
58	4.4	4.6	4.9	5.4		5.4	6.4	6.0	6.6	5.9	5.1	58
66	3.4/62m		3.0	3.2		3.4	4.1	3.9	4.7	4.1	4.8	66
74						2.6/70m	2.4	2.4	2.8	2.6	3.2	74

Jib rated loads in metric tons — 360° work area

Unit: metric ton

Operating Radius in Meters	64.01m (210') Boom										Operating Radius in Meters	
	12.19m (40') Jib		18.29m (60') Jib		24.38m (80') Jib		30.48m (100') Jib		36.58m (120') Jib			
	Offset Angle		Offset Angle		Offset Angle		Offset Angle		Offset Angle			
	10°	30°	10°	30°	10°	30°	10°	30°	10°	30°		
18	25.0										18	
20	25.0			22.9							20	
22	25.0	24.5		22.6		16.6					22	
24	25.0	23.6		22.2		16.4		11.7			24	
26	24.6	22.8		21.9	15.9	16.1		11.5		7.6	26	
28	21.6	22.0		21.5	15.3	15.9		11.3		7.5	28	
30	19.5	20.0		19.7	14.8	15.6	12.7	11.1		7.4	30	
34	15.7	16.5		16.3	13.9	15.2	11.8	10.8	9.2	7.1	34	
38	12.8	13.5		13.4	13.0	13.8	11.1	10.4	8.8	6.9	6.0	38
42	10.2	11.0		10.9	12.0	11.5	10.4	10.1	8.4	6.7	5.9	42
46	8.1	8.8		8.8	9.8	9.4	9.9	9.8	7.9	6.5	5.7	46
50	6.4	6.9		7.0	7.9	7.6	9.1	8.3	7.5	6.3	5.6	50
58	3.7	4.0		4.2	4.9	4.8	5.9	5.4	6.7	5.8	5.1	58
66		2.9/62m				2.7	3.6	3.3	4.2	3.7	4.8	66
74							2.6/70m		3.2/70m	2.8/70m	2.9	74

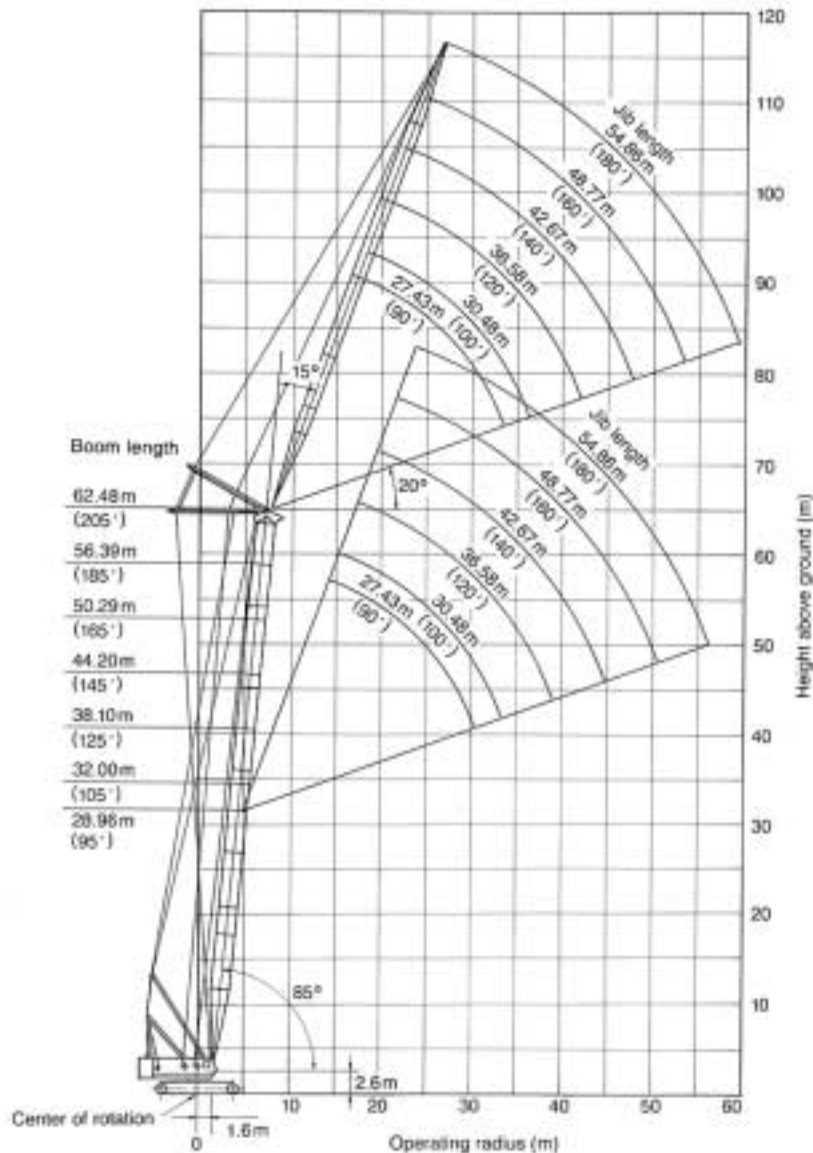
Operating Radius in Meters	70.10m (230') Boom										Operating Radius in Meters	
	12.19m (40') Jib		18.29m (60') Jib		24.38m (80') Jib		30.48m (100') Jib		36.58m (120') Jib			
	Offset Angle		Offset Angle		Offset Angle		Offset Angle		Offset Angle			
	10°	30°	10°	30°	10°	30°	10°	30°	10°	30°		
18	25.0										18	
20	25.0										20	
22	24.2	24.1		21.5							22	
24	23.4	23.6		20.7		16.5					24	
26	22.5	23.1		20.0	16.1	16.2		11.5			26	
28	21.6	22.6		19.3	15.6	16.0		11.4		7.6	28	
30	19.2	20.3		18.5	15.1	15.8	12.9	11.2		7.4	30	
34	15.4	16.4		16.0	14.2	15.3	12.1	10.9	9.2	7.2	34	
38	12.5	13.3		13.1	13.5	13.6	11.3	10.5	8.8	7.0	6.0	38
42	9.8	10.7		10.5	11.3	11.1	10.4	10.1	8.4	6.8	5.9	42
46	7.7	8.4		8.3	9.3	8.9	9.6	9.7	8.1	6.6	5.7	46
50	5.9	6.5		6.5	7.5	7.1	8.8	7.9	7.7	6.4	5.6	50
58	3.2	3.6		3.7	4.5	4.3	5.6	5.0	6.1	5.2	5.3	58
66				3.3/62m			3.2	2.8	3.9	3.2	4.3	66
74								2.9/7m		2.5	74	

Operating Radius in Meters	73.15m (240') Boom										Operating Radius in Meters	
	12.19m (40') Jib		18.29m (60') Jib		24.38m (80') Jib		30.48m (100') Jib		36.58m (120') Jib			
	Offset Angle		Offset Angle		Offset Angle		Offset Angle		Offset Angle			
	10°	30°	10°	30°	10°	30°	10°	30°	10°	30°		
18											18	
20	22.5										20	
22	21.8			19.3							22	
24	21.1	20.9		18.6		16.5					24	
26	20.4	20.5		18.0		16.0		11.6			26	
28	19.8	20.0		17.4	15.7	15.4		11.4		7.6	28	
30	19.2	19.6		16.8	15.3	14.9	13.0	11.3		7.5	30	
34	15.6	16.5		15.8	14.4	13.9	12.2	10.9	9.2	7.2	34	
38	12.8	13.4		13.2	13.6	13.0	11.5	10.5	8.8	7.0	6.0	38
42	10.0	10.9		10.6	11.6	11.0	10.8	10.1	8.5	6.8	5.9	42
46	7.8	8.6		8.5	9.6	9.0	10.3	9.7	8.2	6.6	5.8	46
50	6.1	6.7		6.7	7.7	7.2	8.7	7.9	7.8	6.5	5.6	50
58	3.3	3.8		3.8	4.6	4.4	5.7	5.1	6.2	5.2	5.3	58
66				3.4/62m			3.3	2.9	4.0	3.2	4.3	66
74								3.0/70m		2.6	74	

Operation of this equipment in excess of rated loads or disregard of operating instructions voids the warranty.

Luffing Jib Lifting Capacity

Working ranges



Luffing jib rated loads in metric tons—360° work area (boom angle: 85°)

Unit: metric ton

Operating Radius in Meters	28.23m (92.6') Boom										Operating Radius in Meters
	27.43m (90°) Jib	30.48m (100°) Jib	33.53m (110°) Jib	36.58m (120°) Jib	39.62m (130°) Jib	42.67m (140°) Jib	45.72m (150°) Jib	48.77m (160°) Jib	51.82m (170°) Jib	54.86m (180°) Jib	
14	50.0										14
16	47.0	42.2	38.0								16
18	39.9	39.9	36.2	32.4							18
20	33.9	33.9	33.8	31.0	28.0	25.2					20
22	29.3	29.3	29.3	29.8	26.9	24.2	21.7	19.5			22
24	25.7	25.7	25.7	26.3	25.8	23.3	20.8	18.7	16.8	15.0	24
26	22.7	22.8	22.7	23.3	23.1	22.4	20.2	17.9	16.1	14.3	26
28	19.2	20.4	20.4	20.8	20.7	20.6	19.2	17.2	15.4	13.7	28
30	16.0	17.7	18.4	18.7	18.6	18.5	18.4	16.5	14.7	13.0	30
34			14.1	15.4	15.4	15.3	15.8	15.1	13.4	11.9	34
38				11.7	12.5	12.9	13.2	13.1	12.3	10.8	38
42						10.3	11.2	11.1	11.0	9.4	42
46							8.8	9.3	9.3	8.2	46
50								7.2	7.3	6.8	50
54										5.5	54

Luffing jib rated loads in metric tons—360° work area (boom angle: 85°)

Unit: metric ton

Operating Radius in Meters	34.33m (112.6') Boom										Operating Radius in Meters
	27.43m (90') Jib	30.48m (100') Jib	33.53m (110') Jib	36.58m (120') Jib	39.62m (130') Jib	42.67m (140') Jib	45.72m (150') Jib	48.77m (160') Jib	51.82m (170') Jib	54.86m (180') Jib	
16	47.5	42.7									16
18	41.8	40.6	36.3	32.7							18
20	35.2	35.2	34.6	31.3	28.2	25.4					20
22	30.3	30.3	31.3	30.0	27.1	24.4	21.8	19.6			22
24	26.5	26.5	27.2	27.1	26.0	23.4	21.0	18.8	16.9	15.0	24
26	23.4	23.4	24.0	24.0	23.8	22.5	20.1	18.1	16.2	14.4	26
28	20.3	20.9	21.4	21.4	21.2	21.1	19.3	17.3	15.5	13.8	28
30	17.0	18.6	19.2	19.2	19.1	19.0	18.6	16.6	14.8	13.1	30
34			15.2	15.8	15.7	15.6	16.1	15.2	13.5	11.9	34
38				12.3	13.0	13.1	13.5	13.4	12.3	10.8	38
42					9.9	10.7	11.5	11.3	11.2	9.6	42
46							9.2	9.6	9.6	8.4	46
50								7.5	7.6	6.9	50
54										5.5	54

Unit: metric ton

Operating Radius in Meters	40.42m (132.6') Boom										Operating Radius in Meters
	27.43m (90') Jib	30.48m (100') Jib	33.53m (110') Jib	36.58m (120') Jib	39.62m (130') Jib	42.67m (140') Jib	45.72m (150') Jib	48.77m (160') Jib	51.82m (170') Jib	54.86m (180') Jib	
16	48.1										16
18	43.9	41.1	36.6								18
20	36.7	36.7	36.0	31.8	28.4						20
22	31.4	31.4	32.3	30.3	27.3	24.3	22.0				22
24	27.3	27.3	28.1	28.0	26.2	23.3	21.1	18.9	17.0		24
26	24.1	24.1	24.7	24.7	24.5	22.4	20.3	18.2	16.3	14.5	26
28	21.2	21.4	22.0	21.9	21.6	21.6	19.5	17.4	15.6	13.8	28
30	17.9	19.2	19.7	19.7	19.6	20.3	18.7	16.7	14.9	13.2	30
34		14.0	15.8	16.1	16.0	16.6	16.5	15.3	13.6	12.0	34
38				12.8	13.4	13.8	13.8	13.6	12.4	10.9	38
42					10.4	11.5	11.7	11.5	11.3	9.8	42
46							9.5	9.8	9.3	8.6	46
50								7.8	7.3	6.8	50
54									5.7	5.2	54

Unit: metric ton

Operating Radius in Meters	46.52m (152.6') Boom										Operating Radius in Meters
	27.43m (90') Jib	30.48m (100') Jib	33.53m (110') Jib	36.58m (120') Jib	39.62m (130') Jib	42.67m (140') Jib	45.72m (150') Jib	48.77m (160') Jib	51.82m (170') Jib	54.86m (180') Jib	
16	48.7										16
18	46.1	41.5	37.0								18
20	38.3	38.3	35.3	31.9	28.7						20
22	32.6	32.6	33.6	30.5	27.5	24.5	22.1				22
24	28.3	28.2	29.1	29.0	26.4	23.5	21.2	19.1	17.1		24
26	24.8	24.8	25.5	25.4	25.3	22.6	20.4	18.3	16.4	14.6	26
28	22.0	22.0	22.6	22.6	22.4	21.7	19.6	17.5	15.7	13.9	28
30	18.8	19.7	20.2	20.2	20.1	20.9	18.8	16.8	15.0	13.3	30
34		14.8	16.4	16.5	16.4	17.0	16.9	15.4	13.7	12.1	34
38				13.3	13.7	14.1	14.0	13.9	12.5	11.0	38
42					10.8	11.8	11.9	11.6	11.2	9.9	42
46						9.2	9.8	9.3	8.8	8.1	46
50								7.4	6.9	6.4	50
54									5.3	4.8	54

7250 Crawler Crane

Luffing jib rated loads in metric tons—360° work area (boom angle: 85°)

Unit: metric ton

Operating Radius in Meters	52.62m (172.6') Boom										Operating Radius in Meters
	27.43m (90') Jib	30.48m (100') Jib	33.53m (110') Jib	36.58m (120') Jib	39.62m (130') Jib	42.67m (140') Jib	45.72m (150') Jib	48.77m (160') Jib	51.82m (170') Jib	54.86m (180') Jib	
18	40.7	40.3									18
20	37.2	36.8	35.7	32.2							20
22	33.9	33.9	33.6	30.8	27.7	24.7					22
24	29.2	29.2	30.1	29.5	26.6	23.7	21.4	19.2			24
26	25.6	25.6	26.3	26.2	25.5	22.8	20.6	18.4	16.5	14.7	26
28	22.6	22.6	23.2	23.2	23.1	21.9	19.7	17.7	15.8	14.0	28
30	19.7	20.2	20.7	20.7	20.6	21.0	18.9	16.9	15.1	13.4	30
34		15.4	16.9	16.9	16.8	17.4	17.2	15.5	13.8	12.2	34
38			12.6	13.8	13.9	14.2	14.0	13.5	12.6	11.0	38
42					11.2	11.6	11.3	10.9	10.4	9.9	42
46						9.5	9.2	8.7	8.2	7.7	46
50								6.9	6.4	5.9	50
54									4.9	4.4	54
58										3.1	58

Unit: metric ton

Operating Radius in Meters	58.71m (192.6') Boom										Operating Radius in Meters
	27.43m (90') Jib	30.48m (100') Jib	33.53m (110') Jib	36.58m (120') Jib	39.62m (130') Jib	42.67m (140') Jib	45.72m (150') Jib	48.77m (160') Jib	51.82m (170') Jib	54.86m (180') Jib	
18	31.5	31.2									18
20	28.8	28.5	28.3	28.1							20
22	26.5	26.2	26.0	25.8	25.5	24.8					22
24	24.5	24.2	24.0	23.8	23.6	23.0	21.5	19.3			24
26	22.9	22.6	22.3	22.1	21.8	21.3	20.7	18.6	16.6	14.8	26
28	21.5	21.1	20.8	20.6	20.4	19.9	19.7	17.8	15.9	14.1	28
30	20.3	19.8	19.5	19.3	19.0	18.6	18.5	17.1	15.2	13.5	30
34		16.5	16.9	16.6	16.2	15.8	15.5	15.1	13.9	12.3	34
38			13.2	13.8	13.4	13.0	12.7	12.2	11.8	11.1	38
42					11.1	10.6	10.3	9.9	9.4	8.9	42
46						8.7	8.4	7.9	7.4	6.9	46
50							6.8	6.3	5.8	5.2	50
54									4.4	3.8	54
58										2.6	58

Unit: metric ton

Operating Radius in Meters	61.76m (202.6') Boom										Operating Radius in Meters
	27.43m (90') Jib	30.48m (100') Jib	33.53m (110') Jib	36.58m (120') Jib	39.62m (130') Jib	42.67m (140') Jib	45.72m (150') Jib	48.77m (160') Jib	51.82m (170') Jib	54.86m (180') Jib	
18	27.6	27.4									18
20	25.2	24.9	24.1	24.0							20
22	23.1	22.9	22.2	22.0	21.8						22
24	21.4	21.1	20.5	20.4	20.1	17.9	19.8				24
26	19.9	19.6	19.1	18.7	18.7	18.5	18.3	18.1	16.7		26
28	18.7	18.3	17.9	17.7	17.4	17.2	17.1	16.9	16.0	14.2	28
30	17.6	17.2	16.8	16.6	16.3	16.1	15.9	15.7	15.3	13.5	30
34		15.4	15.0	14.7	14.5	14.2	14.0	13.8	13.6	12.1	34
38			13.5	13.1	12.7	12.2	11.9	11.5	11.0	10.6	38
42					10.5	10.1	9.7	9.3	8.8	8.3	42
46						8.3	7.9	7.4	7.0	6.5	46
50							6.4	5.9	5.4	4.9	50
54									4.1	3.5	54
58										2.4	58

Note: Consult Kobe Steel, Ltd. on figures for the luffing jib rated load when boom angles are 65° and 75° and the main boom rated load (with luffing jib attached).

NOTE: Due to our policy of continual product improvement, all designs and specifications are subject to change without advance notice.