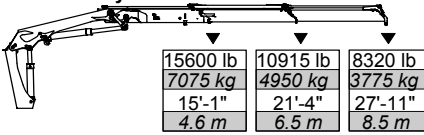


# 34/235

# Articulating Crane Technical Specifications

## 34/235 Lifting Capacities

### 34/235 - 2 Hydraulic



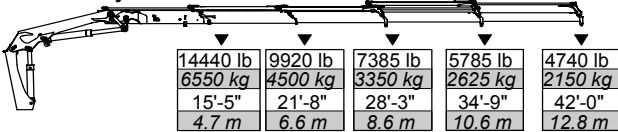
15600 lb 7075 kg 15'-1" 4.6 m	10915 lb 4950 kg 21'-4" 6.5 m	8320 lb 3775 kg 27'-11" 8.5 m
--	--	--

### 34/235 - 3 Hydraulic



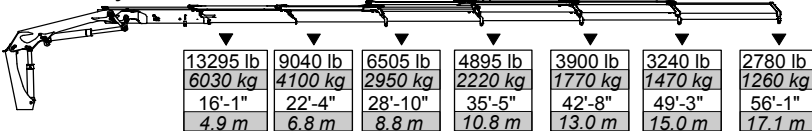
14990 lb 6800 kg 15'-1" 4.6 m	10360 lb 4700 kg 21'-4" 6.5 m	7825 lb 3550 kg 27'-11" 8.5 m	6285 lb 2850 kg 34'-9" 10.6 m
--	--	--	--

### 34/235 - 4 Hydraulic



14440 lb 6550 kg 15'-5" 4.7 m	9920 lb 4500 kg 21'-8" 6.6 m	7385 lb 3350 kg 28'-3" 8.6 m	5785 lb 2625 kg 34'-9" 10.6 m	4740 lb 2150 kg 42'-0" 12.8 m
--	---------------------------------------	---------------------------------------	--	--

### 34/235 - 6 Hydraulic



13295 lb 6030 kg 16'-1" 4.9 m	9040 lb 4100 kg 22'-4" 6.8 m	6505 lb 2950 kg 28'-10" 8.8 m	4895 lb 2220 kg 35'-5" 10.8 m	3900 lb 1770 kg 42'-8" 13.0 m	3240 lb 1470 kg 49'-3" 15.0 m	2780 lb 1260 kg 56'-1" 17.1 m
--	---------------------------------------	--	--	--	--	--



Note: Crane appearance subject to change.

## 34/235 Specifications

Outrigger Pad Diameter	9.0" (225 mm)
Crane Storage Height	7' 11" (2425 mm)
Mounting Space (K2 - K3) ***	3' 8" (1108 mm)
Mounting Space (K4 - K6) ***	4' 1" (1250 mm)
Rotational Torque	34,710 ft-lb (4.8 tm)
Rotation	420°
Optimum Pump Performance	17 U.S. gpm (65 L/min)
System Pressure	3,770 psi (260 bar)
Oil Reservoir Capacity	42.3 gal (160 L)
Outrigger Extension Span	
Standard (manual out / hydraulic down)	18' 8" (5.7 m)
Weight	1100 lb (500 kg)
Option (hydraulic out / hydraulic down)	22' 0" (6.7 m)
Weight	1400 lb (635 kg)

## Minimum Chassis Specifications

Front Axle Rating (GAWR)	16,000 lb (7255 kg)
Rear Axle Rating (GAWR)	40,000 lb (18,145 kg)
Resistance To Bending Moment	3,500,000 in-lb (403,245 kg-m)

34/235	2 - Hydraulic	3 - Hydraulic	4 - Hydraulic	6 - Hydraulic
Crane Rating*	235,075 ft-lb (32.5 tm)	226,395 ft-lb (31.3 tm)	220,605 ft-lb (30.5 tm)	213,375 ft-lb (29.5 tm)
Maximum Horizontal Reach	28' 3" (8.6 m)	35' 1" (10.7 m)	42' 4" (12.9 m)	57' 5" (17.2 m)
Maximum Vertical Reach	36' 9" (11.2 m)	44' 0" (13.4 m)	50' 10" (15.5 m)	65' 0" (19.8 m)
Maximum Capacity	27,560 lb (12,500 kg)	27,560 lb (12,500 kg)	27,560 lb (12,500 kg)	25,355 lb (11,500 kg)
Max Cap @ Max Reach	8,320 lb (3,775 kg)	6,285 lb (2,850 kg)	4,740 lb (2,150 kg)	2,780 lb (1,260 kg)
Crane Weight **	7,880 lb (3,575 kg)	8,445 lb (3,830 kg)	8,930 lb (4,050 kg)	9,920 lb (4,500 kg)
Hook Approach				
Vertical	9' 3" (2812 mm)	9' 0" (2750 mm)	8' 10" (2689 mm)	8' 1" (2452 mm)
Horizontal	2' 3" (0.68 m)	2' 6" (0.76 m)	2' 9" (0.84 m)	3' 3" (1.00 m)
Center of Gravity - Stored				
Vertical	2' 9" (840 mm)	2' 9" (840 mm)	2' 9" (840 mm)	2' 10" (867 mm)
Horizontal (C/L Rot to Bridge)	10.6" (270 mm)	11.1" (282 mm)	11.4" (290 mm)	11.2" (284 mm)
Maximum Jib Reach				
Vertical		(K3) 69' 10" (21.3 m)	(K3) 76' 9" (23.4 m)	
Horizontal		61' 0" (18.6 m)	68' 3" (20.8 m)	
Vertical			(K4) 82' 4" (25.1 m)	
Horizontal			73' 6" (22.4 m)	
Maximum Capacity @ Maximum Reach		1985 lb (900 kg)	(K3) 1765 lb (800 kg) (K4) 1270 lb (575 kg)	
Jib Weight		1455 lb (660 kg)	1640 lb (743 kg)	

\* Crane rating (ft-lb) is the rated load (lb) multiplied by the respective distance (ft) from centerline of rotation with all extensions retracted and the inner and outer booms in a horizontal position, per ANSI B30.22.

\*\* Crane weight does not include outriggers. \*\*\* Maximum swing clearance radius required is 2'-8" (802 mm) at 8'-6" (2595 mm).

© 2009 Iowa Mold Tooling Co., Inc. All Rights Reserved.





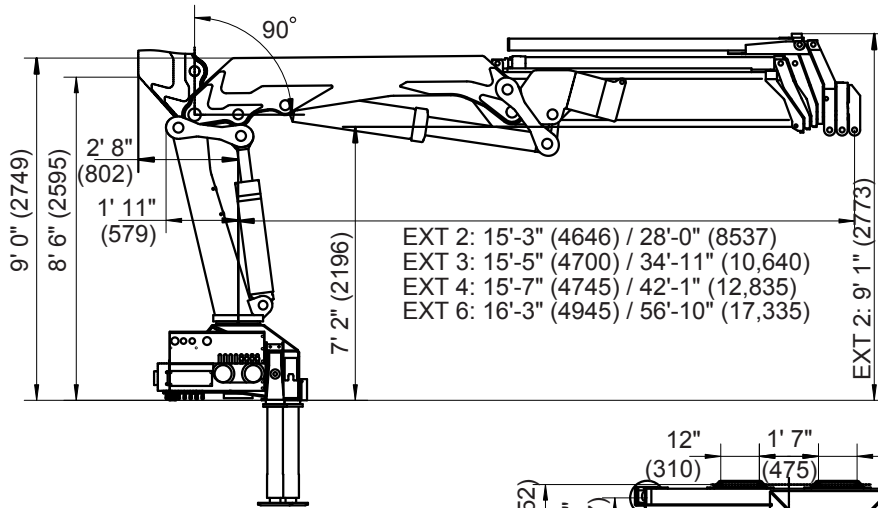


# 34/235 Articulating Crane

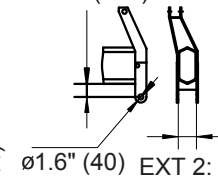


An Oshkosh Corporation Company

## Geometric Configurations



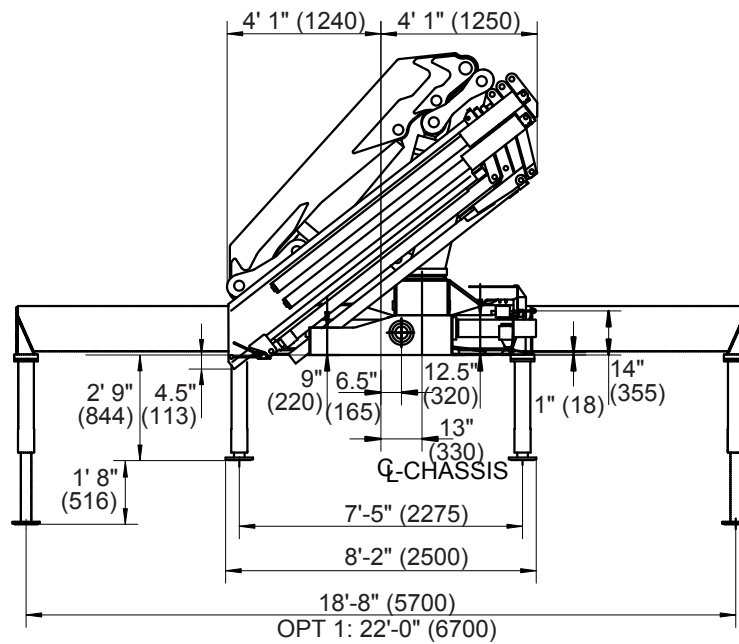
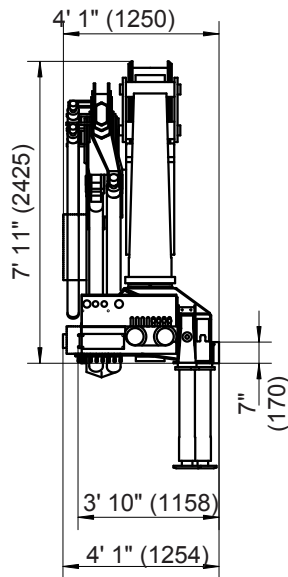
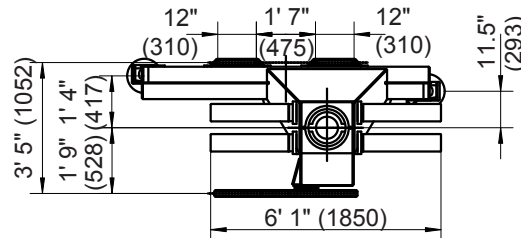
- EXT 2: 4.3" (110)
- EXT 3: 4.3" (110)
- EXT 4: 4.1" (105)
- EXT 6: 5.1" (129)



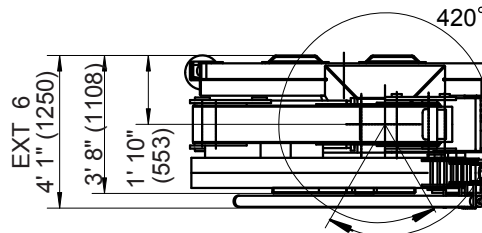
- EXT 2: 5.4" (138)
- EXT 3: 5.4" (138)
- EXT 4: 5.75" (146)
- EXT 6: 4" (102)

- EXT 2: 15'-3" (4646) / 28'-0" (8537)
- EXT 3: 15'-5" (4700) / 34'-11" (10,640)
- EXT 4: 15'-7" (4745) / 42'-1" (12,835)
- EXT 6: 16'-3" (4945) / 56'-10" (17,335)

- EXT 2: 9' 1" (2773)
- EXT 3: 9' 7" (2921)
- EXT 4: 9' 8" (2944)
- EXT 6: 9' 8" (2944)



NOTE:  
ALL DIMENSIONS IN  
FEET & INCHES (mm).



### Iowa Mold Tooling Co., Inc.

500 Highway 18 West P.O. Box 189 Garner, Iowa 50438-0189  
800-247-5958 641-923-3711 Fax: 641-923-6063 www.imt.com

IMT reserves the right to make changes in engineering, design, and specifications; add improvements; or discontinue manufacturing at any time without notice or obligation.  
IMT and the IMT LOGO are registered trademarks or trademarks of Iowa Mold Tooling Co., Inc., Garner, IA, USA.

© 2009 Iowa Mold Tooling Co., Inc. All Rights Reserved.