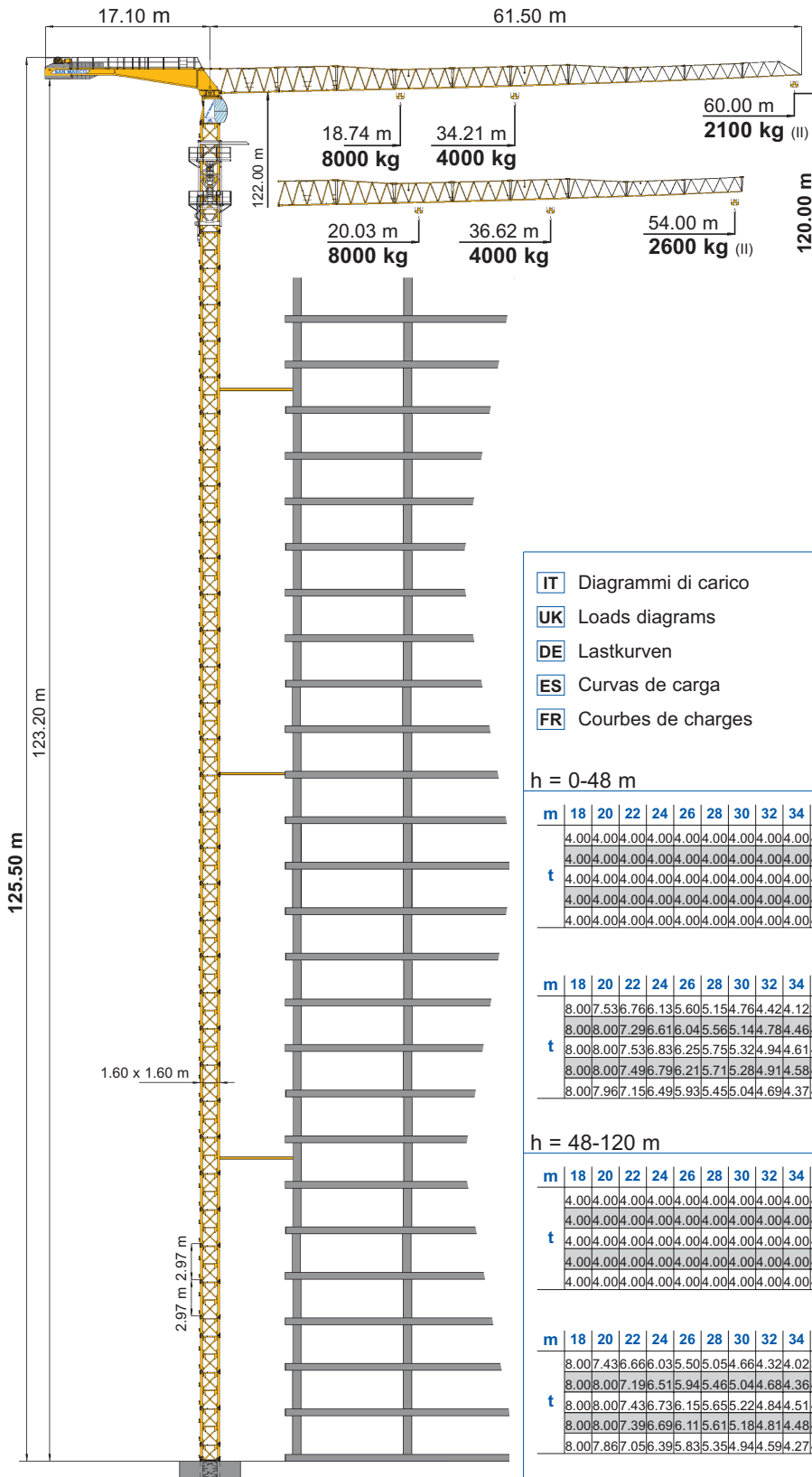


- IT** Gru a torre modulare - Versione montaggio idraulico
- UK** Modular tower crane - Hydraulic Assembly Version
- DE** Modulare Turmdrehkran - Hydraulische Montage Ausführung
- ES** Grua a montaje modular - Versión Montaje Hidráulico
- FR** Grue a tour modulaire - Version à montage hydraulique

SMTTH 604

Triverter 444



- IT** Diagrammi di carico
- UK** Loads diagrams
- DE** Lastkurven
- ES** Curvas de carga
- FR** Courbes de charges

- Tiro in II 4t (standard)
- Single wiring 4t (standard)
- Zwei Hubseilen 4t (standard)
- Tiro simple 4t (standard)
- Simple mouflage 4t (standard)



- Tiro in IV 8t (opzionale) *
- Double wiring 8t (optional)
- Vierstrangbetrieb 8t (optional)
- Tiro doble 8t (opcional)
- Double mouflage 8t (optionnel)



h = 0-48 m

m	18	20	22	24	26	28	30	32	34	36	38	40	42	44	46	48	50	52	54	56	58	60	m
	4.00	4.00	4.00	4.00	4.00	4.00	4.00	4.00	4.00	4.00	3.73	3.52	3.33	3.15	3.00	2.85	2.72	2.60	2.49	2.38	2.29	2.20	60
t	4.00	4.00	4.00	4.00	4.00	4.00	4.00	4.00	4.00	4.00	4.00	3.80	3.60	3.41	3.24	3.09	2.95	2.82	2.70	2.54	2.39	2.24	54
	4.00	4.00	4.00	4.00	4.00	4.00	4.00	4.00	4.00	4.00	4.00	3.93	3.73	3.53	3.35	3.20	3.04	2.89	2.74	2.59	2.44	2.29	48
	4.00	4.00	4.00	4.00	4.00	4.00	4.00	4.00	4.00	4.00	4.00	3.90	3.70	3.50	3.30	3.10	2.90	2.70	2.50	2.30	2.10	1.90	36



m	18	20	22	24	26	28	30	32	34	36	38	40	42	44	46	48	50	52	54	56	58	60	m
	8.00	7.53	6.76	6.13	5.60	5.15	4.76	4.42	4.12	3.86	3.63	3.42	3.23	3.05	2.90	2.75	2.62	2.50	2.39	2.28	2.19	2.10	60
t	8.00	8.00	7.29	6.61	6.04	5.56	5.14	4.78	4.46	4.18	3.93	3.70	3.50	3.31	3.14	2.99	2.85	2.72	2.60	2.49	2.38	2.27	54
	8.00	8.00	7.53	6.83	6.25	5.75	5.32	4.94	4.61	4.32	4.06	3.83	3.62	3.43	3.25	3.10	2.94	2.79	2.64	2.49	2.34	2.19	48
	8.00	8.00	7.49	6.79	6.21	5.71	5.28	4.91	4.58	4.29	4.04	3.80	3.60	3.40	3.20	3.00	2.80	2.60	2.40	2.20	2.00	1.80	36



h = 48-120 m

m	18	20	22	24	26	28	30	32	34	36	38	40	42	44	46	48	50	52	54	56	58	60	m
	4.00	4.00	4.00	4.00	4.00	4.00	4.00	4.00	4.00	4.00	3.63	3.42	3.23	3.05	2.90	2.75	2.62	2.50	2.39	2.28	2.19	2.10	60
t	4.00	4.00	4.00	4.00	4.00	4.00	4.00	4.00	4.00	4.00	4.00	3.93	3.70	3.50	3.31	3.14	2.99	2.85	2.72	2.60	2.49	2.38	54
	4.00	4.00	4.00	4.00	4.00	4.00	4.00	4.00	4.00	4.00	4.00	3.83	3.62	3.43	3.25	3.10	2.94	2.79	2.64	2.49	2.34	2.19	48
	4.00	4.00	4.00	4.00	4.00	4.00	4.00	4.00	4.00	4.00	4.00	3.80	3.60	3.40	3.20	3.00	2.80	2.60	2.40	2.20	2.00	1.80	36



m	18	20	22	24	26	28	30	32	34	36	38	40	42	44	46	48	50	52	54	56	58	60	m
	8.00	7.43	6.66	6.03	5.50	5.05	4.66	4.32	4.02	3.76	3.53	3.32	3.13	2.95	2.80	2.65	2.52	2.40	2.29	2.18	2.09	2.00	60
t	8.00	8.00	7.19	6.51	5.94	5.46	5.04	4.68	4.36	4.08	3.83	3.60	3.40	3.21	3.04	2.89	2.75	2.62	2.50	2.39	2.28	2.17	54
	8.00	8.00	7.43	6.73	6.15	5.65	5.22	4.84	4.51	4.22	3.96	3.73	3.52	3.33	3.15	3.00	2.84	2.69	2.54	2.39	2.24	2.09	48
	8.00	8.00	7.39	6.69	6.11	5.61	5.18	4.81	4.48	4.19	3.94	3.70	3.50	3.30	3.10	2.90	2.70	2.50	2.30	2.10	1.90	1.70	36



* A richiesta
On request
Auf Wunsch
Sobre demanda
Sur demande



DIN 15018 H1 B3
A4 - ISO 4301



