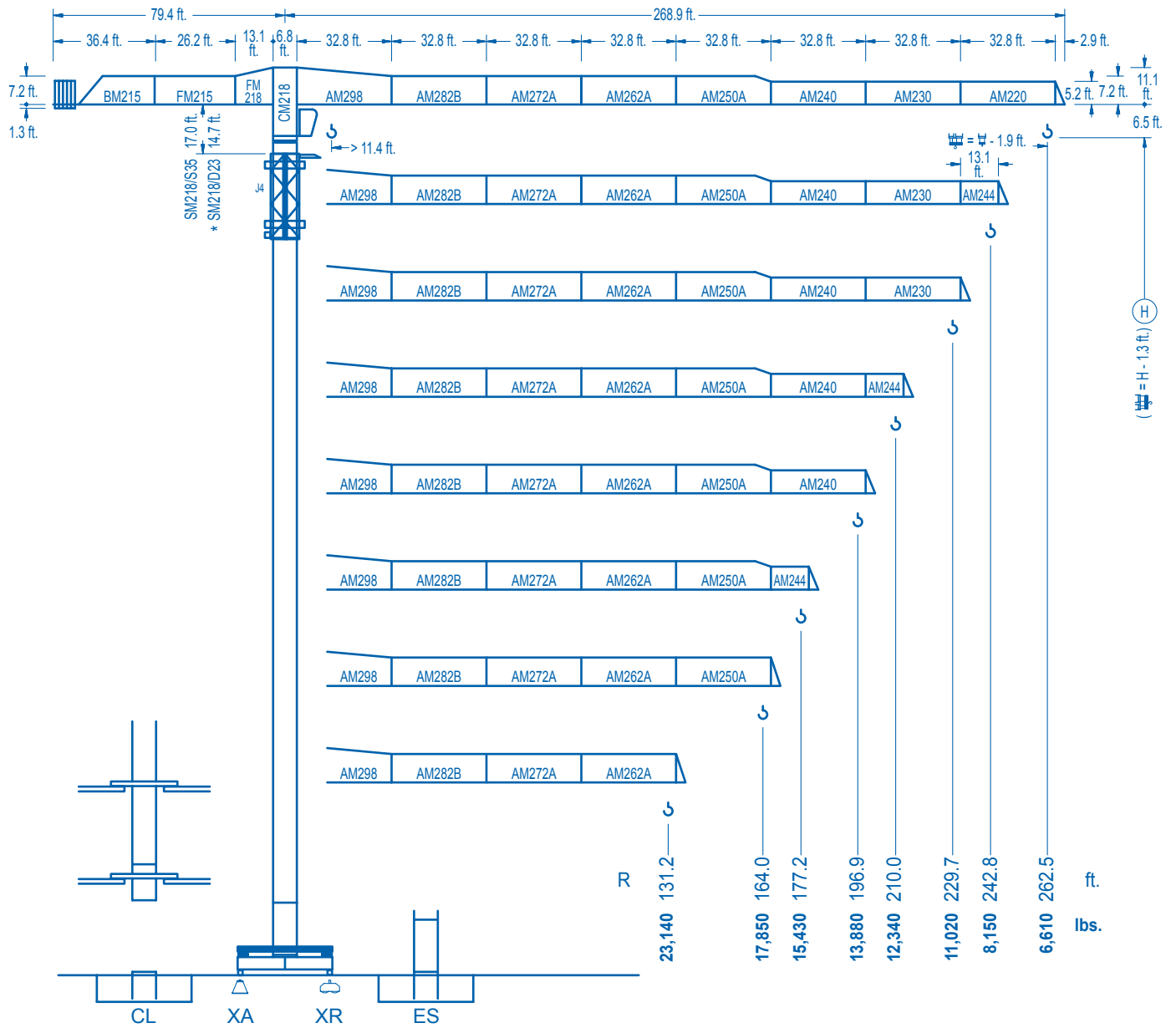


LC 2100

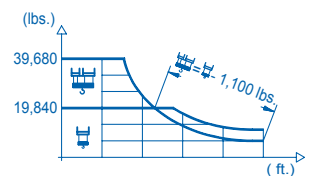
21 LC 400

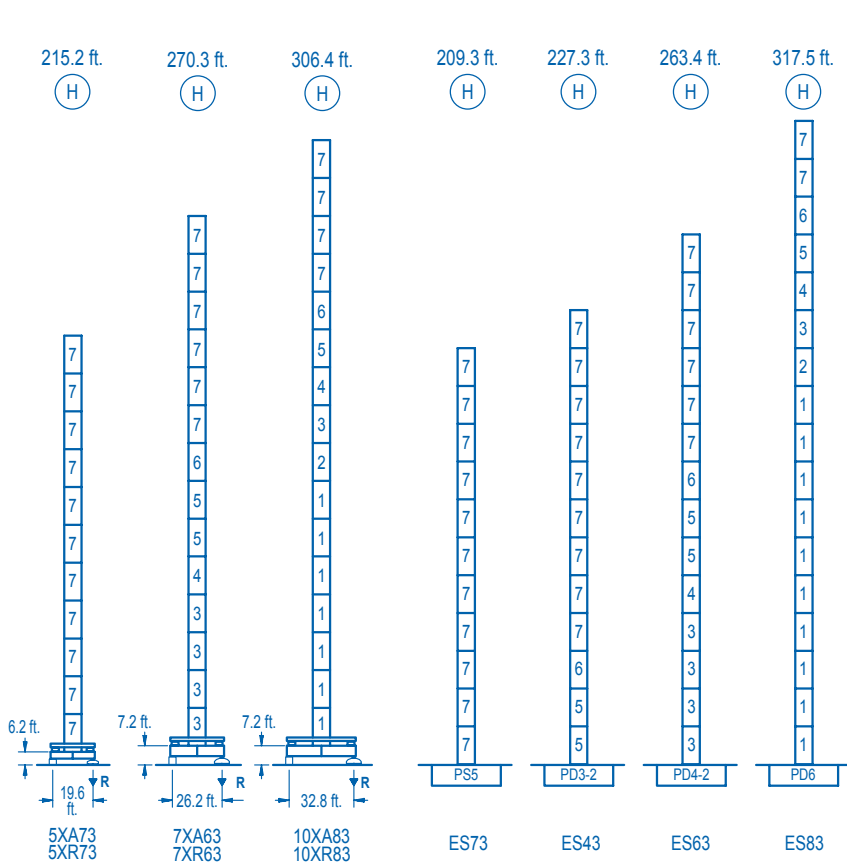
39,680 lbs.



CE EN 14439 (C/25)

R (ft.)																																
262.5	54.5	65.6	82.0	98.8	100.1	111.5	131.2	144.4	164.0	177.2	196.9	210.0	229.7	242.8	262.5	ft.	39,680	32,020	24,720	19,840	19,840	17,580	14,680	13,190	11,430	10,470	9,280	8,600	7,740	7,260	6,610	lbs.
242.8	59.1	65.6	82.0	107.6	110.2	111.5	131.2	144.4	164.0	177.2	196.9	210.0	229.7	242.8	ft.	39,680	35,220	27,250	19,840	19,840	19,560	16,350	14,710	12,760	11,700	10,380	9,640	8,690	8,150	lbs.		
229.7		71.2	82.0	98.4	111.5	129.9	135.2	144.4	164.0	177.2	196.9	210.0	229.7	ft.		39,680	33,760	27,420	23,730	19,840	19,840	18,440	16,030	14,720	13,100	12,190	11,020	lbs.				
210.0		71.5	82.0	98.4	111.5	130.9	136.5	144.4	164.0	177.2	196.9	210.0	ft.		39,680	33,970	27,600	23,880	19,840	19,840	18,670	16,220	14,910	13,270	12,340	lbs.						
196.9		73.8	82.0	98.4	111.5	135.5	142.1	144.4	164.0	177.2	196.9	ft.		39,680	35,250	28,670	24,830	19,840	19,840	19,510	16,970	15,590	13,880	lbs.								
177.2		72.8	82.0	98.4	111.5	133.5	140.7	144.4	164.0	177.2	ft.		39,680	34,700	28,200	24,430	19,840	19,840	19,300	16,780	15,430	lbs.										
164.0		76.4	82.0	98.4	111.5	140.4	149.0	164.0	ft.		39,680	36,710	29,870	25,900	19,840	19,840	17,850	lbs.														
131.2		80.4	82.0	98.4	111.5	131.2	ft.		39,680	38,740	31,550	27,370	23,140	lbs.																		





R. máx. En servicio
In operation
En service
In Betrieb

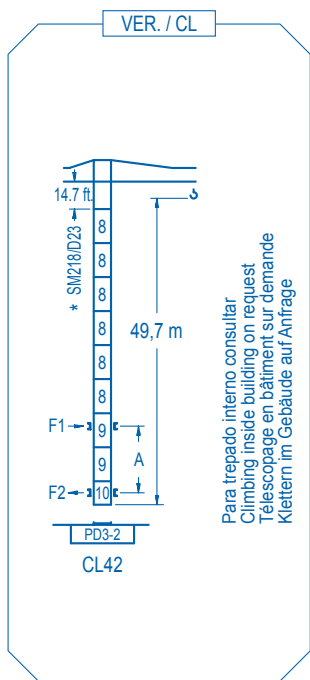
5XR73...283,730 lbs.
7XR63...266,320 lbs.
10XR83...274,260 lbs.

R. máx. Fuera de servicio
Out of service
Hors service
Ausser Betrieb

5XR73...324,300 lbs.
5XR73...415,570 lbs.
10XR83...466,060 lbs.

Para otras zonas de viento o alturas superiores consultar
For other wind zones or additional hook heights on request
Pour d'autres zones de vent ou des hauteurs supplémentaires sur demande
Für andere Windzonen oder weiteren Hakenhöhen auf Anfrage

nº	Ref.	□	h
1	D36	8.2	18.0
2	TD36A	8.2	18.0
3	D34	8.2	18.0
4	TD34	8.2	18.0
5	D33	8.2	18.0
6	TD33A	8.2	18.0
7	S35	8.2	18.0
8	D23	6.5	18.0
9	D23A	6.5	18.0
10	CLD23A	6.5	10.2



	5XA73	7XA63	10XA83
A max	168.6	223.7	259.8
B max	- 108.3	- 108.3	- 108.3
C max	154.9 154.9 154.9	154.9 154.9 154.9	154.9 154.9 154.9
H max	98.6 131.6 378.6	486.9 126.4 159.4	

	ES73	ES43	ES63	ES83
A max	162.7	180.8	216.9	271.0
B max	108.3	108.3	108.3	108.3
C max	154.9 154.9 154.9	154.9 154.9 154.9	154.9 154.9 154.9	154.9 154.9 154.9
H max	317.6 425.9 335.6	443.9 371.7	480.0 425.9	534.1

CFU-7.5
10 hp.
0 ⇄ 308 ft./min

GR-12
4 x 88 ft.lbs.
0 ⇄ 0.7 rpm

TRA-7.5 **TRA-7.5**
2 x 55 ft.lbs. 4 x 55 ft.lbs.
0 ⇄ 78 ft./min
5XR43 7XR63 10XR83

*** TRA-7.5VC** **TRA-7.5VC**
2 x 55 ft.lbs. 4 x 55 ft.lbs.
0 ⇄ 78 ft./min
5XR43 7XR63 10XR83

EFU5-50-45
67hp.
2,590 ft.
Graphs showing torque vs speed for 49, 131, 197, 256 ft/min and 4,410 lbs.

EFU6-65-45
87 hp.
2,590 ft.
Graphs showing torque vs speed for 74, 164, 246, 328, 361 ft/min and 3,530 lbs.

EFU4-110-45
148 hp.
2,590 ft.
Graphs showing torque vs speed for 98, 197, 295, 400 ft/min and 8,820 lbs.

Tensión de alimentación Operating voltage Tension de service Betriebsspannung	480 V 3 ph 60 Hz
--	---

Opcional Optional En option Kaufoption	*
---	----------