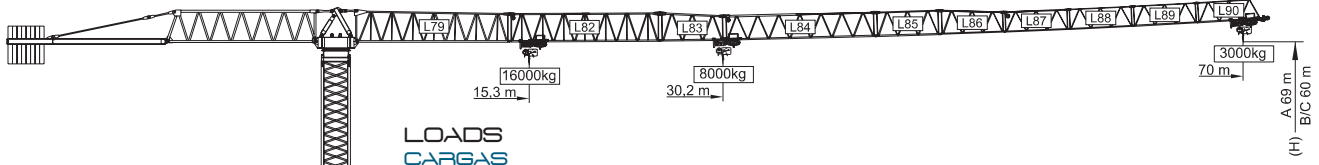
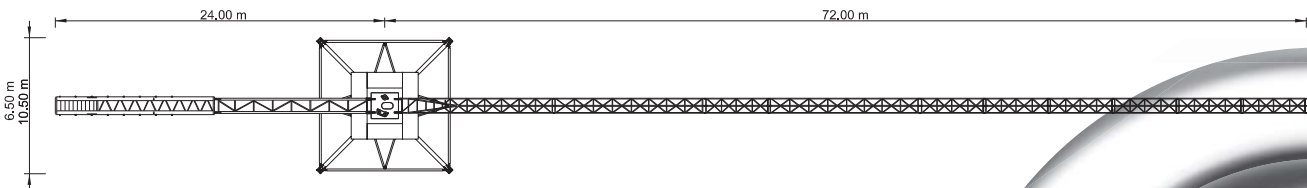
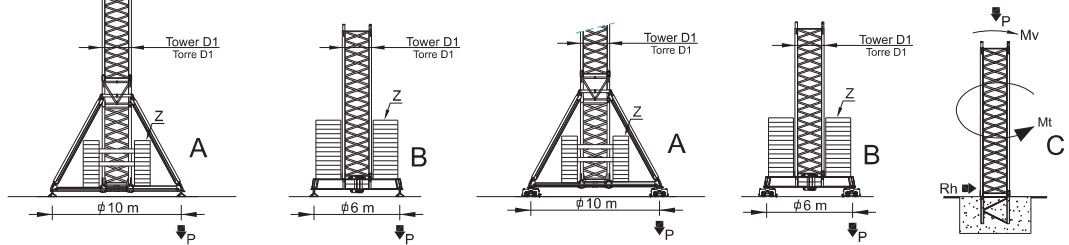


SGT 7030TL



LOADS CARGAS

Counterweight Contrapeso	Jib Length Comprimento da lança	Kg / m		m		15	20	25	28	33	38	40	45	50	55	60	65	70
		16000	8000															
20000kg 9x2000kg+2x1000kg	70 m L79+L82+L83+L84+L85+ L86+L87+L88+L89+L90	30,2 m	8000	8000	8000	8000	8000	8000	8000	7280	6220	5870	5130	4540	4050	3650	3300	3000
		15,3 m	16000	11940	9270	8130	6680	5620	4530	2940	3450	3050	2700	2400				
20000kg 9x2000kg+2x1000kg	65 m L79+L82+L83+L84+L85+ L86+L87+L88+L89	33,2 m	8000	8000	8000	8000	8000	8000	8000	6920	6540	5720	5070	4540	4090	3700		
		16,8 m	16000	13270	10340	9080	7490	6320	5940	5120	4470	3940	3490	3100				
19000kg 9x2000kg+1x1000kg	60 m L79+L82+L83+L84+L85+ L86+L87+L88	35,4 m	8000	8000	8000	8000	8000	8000	8000	7440	7030	6160	5460	4890	4400			
		17,9 m	16000	14260	11130	9780	8090	6840	6430	5560	4860	4290	3800					
19000kg 9x2000kg+1x1000kg	55 m L79+L82+L83+L84+L85+ L86+L87	36,9 m	8000	8000	8000	8000	8000	8000	8000	7770	7340	6440	5710	5100				
		18,6 m	16000	14890	11630	10230	8470	7170	6740	5840	5110	4500						
18000kg 8x2000kg	50 m L79+L82+L83+L84+L85+ L86	37 m	8000	8000	8000	8000	8000	8000	8000	7790	7360	6450	5700					
		18,7 m	16000	14920	11660	10250	8490	7190	6760	5850	5100							
16000kg 8x2000kg	45 m L79+L82+L83+L84+L85	36,8 m	8000	8000	8000	8000	8000	8000	8000	7770	7340	6400						
		18,6 m	16000	14880	11620	10230	8470	7170	6740	5800								
15000kg 7x2000kg+1x1000kg	40 m L79+L82+L83+L84	36,8 m	8000	8000	8000	8000	8000	8000	8000	7770	7300							
		18,6 m	16000	14890	11630	10240	8470	7170	6700									
14000kg 7x2000kg	38 m L79+L82+L83+L85+L86	37,1 m	8000	8000	8000	8000	8000	8000	8000	7700								
		18,8 m	16000	14950	11680	10280	8510	7100										
12000kg 6x2000kg	33 m L79+L82+L83+L85	33 m	8000	8000	8000	8000	8000											
		18,8 m	16000	15000	11720	10320	8400											
11000kg 5x2000kg+1x1000kg	28 m L79+L82+L83	28 m	8000	8000	8000	8000												
		18,6 m	16000	14980	11700	10100												



REACTIONS REAÇÕES

BALLAST TABLE AND MAXIMUM REACTIONS FOR ALL JIB VERSIONS
TABELA DE LASTRO E REAÇÕES MÁXIMAS PARA TODAS AS VERSÕES DE LANÇA

H m	A / B			C			Rh kN	Mt kNm
	Z kN	P kN	Mv kNm	P kN	Mv kNm			
27	800	200	725	450	2894	690	108	360
30	800	200	739	459	2975	707	117	360
33	800	200	753	470	3061	725	126	360
36	900	200	793	480	3153	741	135	360
39	900	300	808	516	3253	758	144	360
42	900	300	825	528	3358	775	152	360
45	1000	300	867	540	3469	792	161	360
48	1100	300	910	552	3587	808	170	360
51	1200	400	953	590	3712	825	179	360
54	1300	500	997	629	3846	842	188	360
57	1400	600	1076	692	4400	859	197	360
60	1500	700	1174	762	4979	876	206	360
63		800		835			215	360
66		900		909			224	360
69		1100		1010			233	360

CHARACTERISTICS CARACTERÍSTICAS

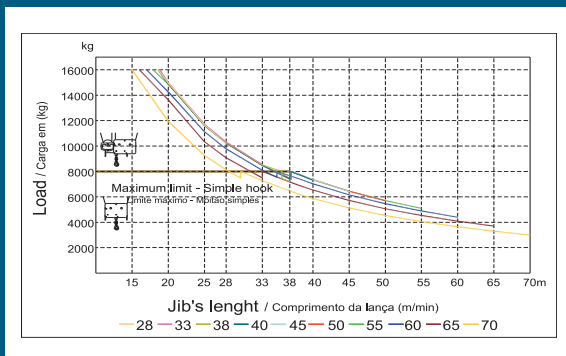
Motions Movimento	Speed Velocidade	Motor's power Pot. dos motores
Hoisting Elevação	0 a 80 m/min.	50 kW
	0 a 40 m/min.	
Slewing Orientação	0 a 1 r.p.m.	4x5 daN.m
Trolleying Distribuição	0 a 60 m/min.	11 kW
Travelling Translação	0 a 10 m/min.	4x5,5 kW
Electric power Tension / Tensão		100 kVA 400 v ±5% (50 Hz)

* Option / Opção

PARTS ELEMENTOS

		A (mm)	B (mm)	C (mm)	Peso (kg)	
Jib section Lana	L79		11976	1540	2570	9300
Jib section Lana	L82		12000	1460	2275	3700
Jib section Lana	L83		5275	1460	2230	1300
Jib section Lana	L84		11970	1460	1950	2200
Jib section Lana	L85		5210	1460	1945	800
Jib section Lana	L86		5190	1460	1920	650
Jib section Lana	L87		5190	1460	1610	520
Jib section Lana	L88		5160	1460	1595	400
Jib section Lana	L89		5140	1460	1590	350
Jib section Lana	L90		5070	1460	1590	400
Tower section 12m Tramo torre 12m	D1		11990	2322	2322	7420
Tower section 6m Tramo torre 6m	D1		6245	2322	2322	4265
Tower section 3m Tramo torre 3m	D1		3365	2322	2322	2580
Telescopic section Tramo telescopagem	D1		2300	2846	2584	2665
Head section Cabeote			3430	2200	2310	12500
Pyramid Piramide			2600	1450	1040	1800
Counter-jib 1 Contra-lana 1			11745	1450	2612	5360
Counter-jib 2 Contra-lana 2			10925	1430	675	2600
Cross shaped base Chassis	D1		8725	800	1600	5500
Cross shaped base Chassis	D1		4200	380	1600	2775
Ballast Contra-peso			1600	250	1570	1000
Ballast Contra-peso			1600	250	2950	2000
Foundation tower Tramo de encastrar	D1		2500	2322	2322	2000

LOAD DIAGRAM DIAGRAMA DE CARGAS



SPEED DIAGRAM DIAGRAMA DE VELOCIDADE

