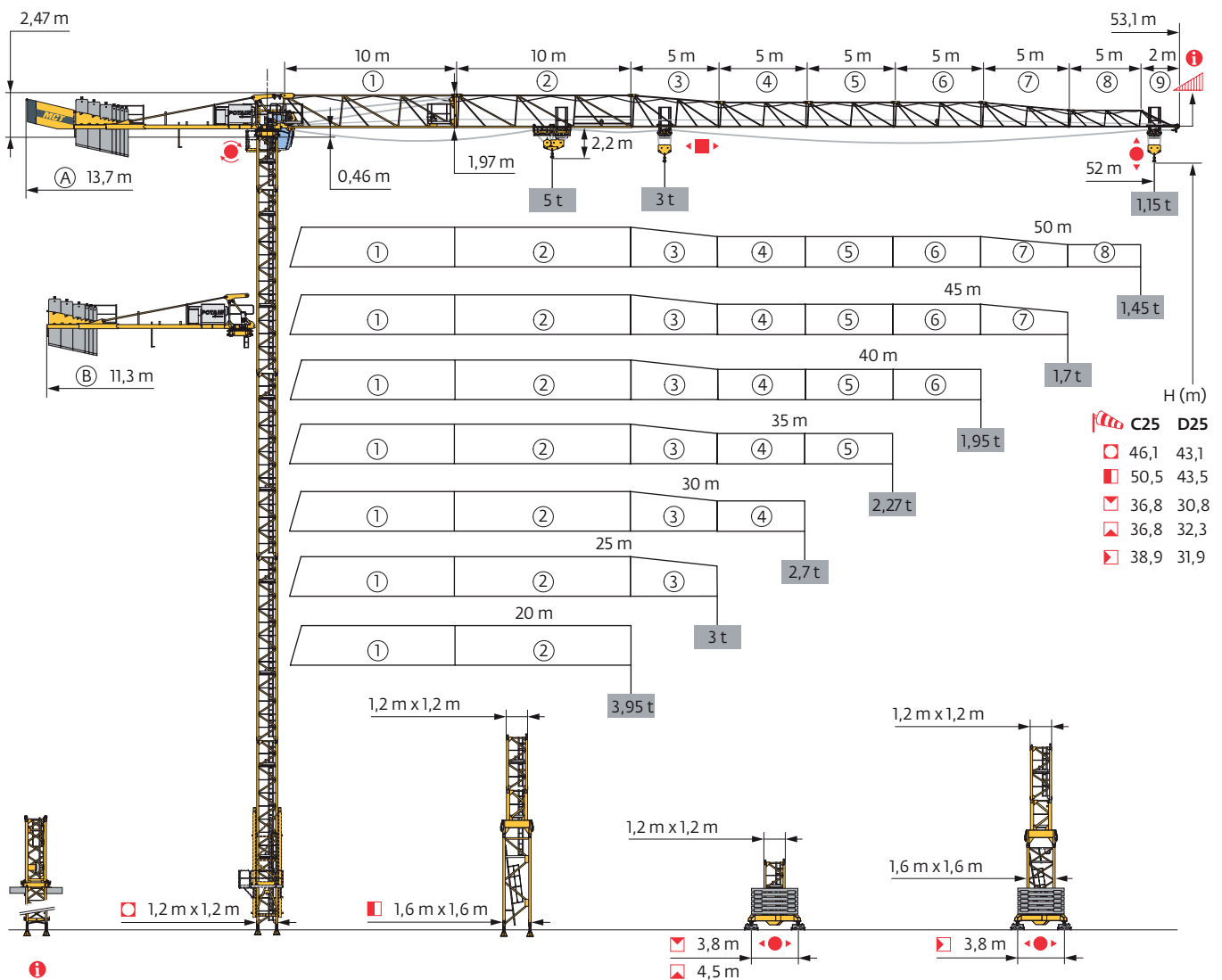
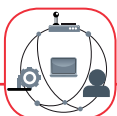


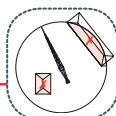
Potain MCT 88



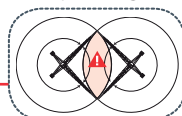
SmartCom



Top Site



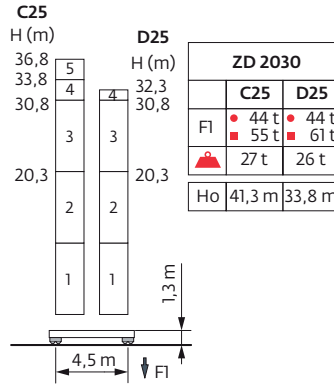
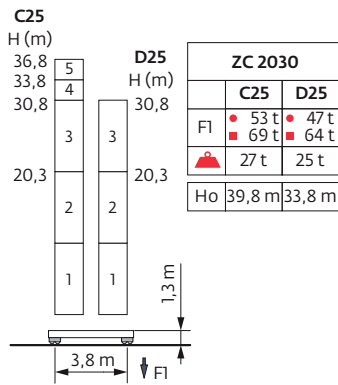
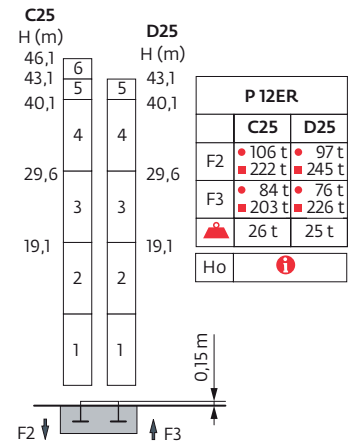
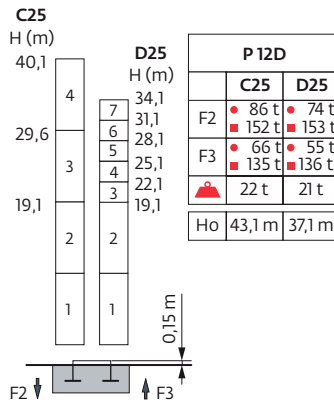
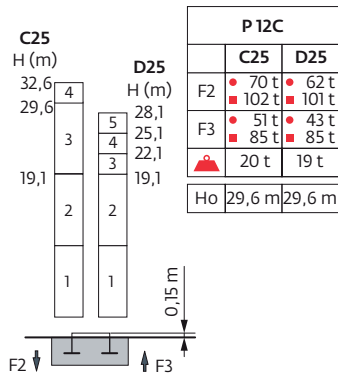
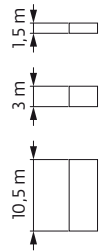
Top Tracing II



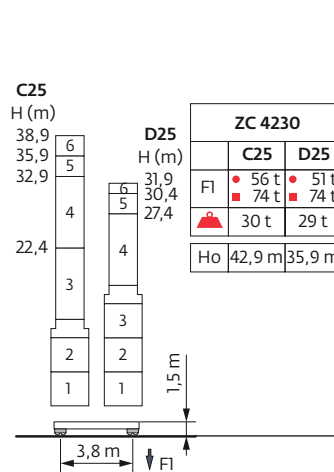
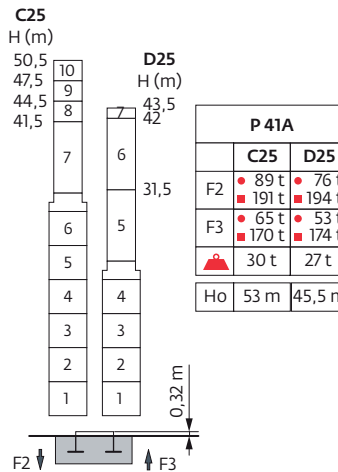
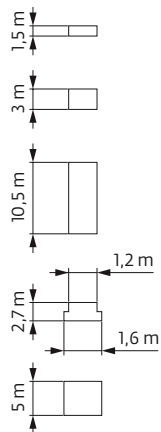
EN 14439 C25-D25

Mât - Réactions / Mast - Reaktionskräfte / Mast - Reactions / Mástil - Reacciones / Torre - Reazioni
 Tramo - Reações / Реакция опор мачты

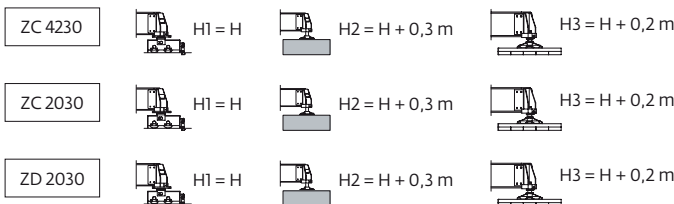
1,2 m
 20 m → 52 m



1,6 m/1,2 m
 20 m → 52 m



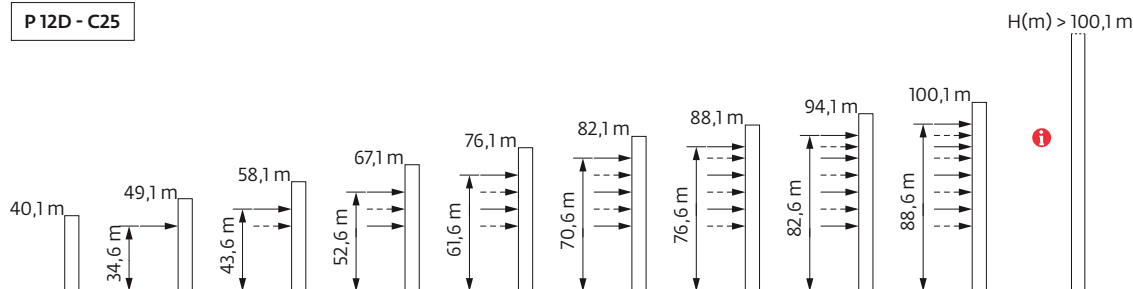
H (m) = H (m)



Ancrages / Verankerungen / Anchorages / Anclajes / Ancoraggi
 Ancoragem / Анкера






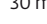
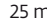
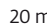
D25 

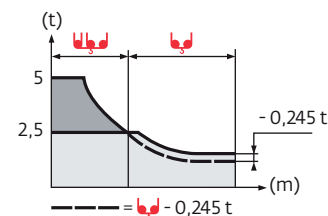
P 12D - C25




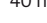
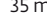

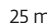



Courbes de charges / Lastkurven / Load curves / Curvas de cargas / Curve di carico
 Curvas de carga / Кривые нагрузок



52 m	2,7	▶	13,7	15	17	20	22	24,3	26,4	27	30	32	35	37	40	42	45	47	50	52	m
			5	4,5	3,9	3,2	2,85	2,5	-2,5	2,45	2,15	2	1,8	1,7	1,55	1,45	1,3	1,25	1,15	1,1	t
50 m	2,7	▶	15,9	17	20	22	25	27	28,3	30,7	32	35	37	40	42	45	47	50	50	m	
			5	4,6	3,8	3,4	2,9	2,65	2,5	-2,5	2,4	2,15	2	1,85	1,75	1,6	1,5	1,4	1,4	t	
45 m	2,7	▶	16,3	17	20	22	25	27	29,1	31,6	32	35	37	40	42	45	m				
			5	4,8	3,9	3,5	3	2,75	2,5	-2,5	2,45	2,2	2,1	1,9	1,8	1,65	t				
40 m	2,7	▶	16,4	17	20	22	25	27	29,1	31,6	32	35	37	40	m						
			5	4,8	3,9	3,5	3	2,75	2,5	-2,5	2,45	2,2	2,1	1,9	t						
35 m	2,7	▶	16,4	17	20	22	25	27	29,1	31,6	32	35	m								
			5	4,8	3,9	3,5	3	2,75	2,5	-2,5	2,45	2,22	t								
30 m	2,7	▶	16,3	17	20	22	25	27	29	30	m										
			5	4,8	3,9	3,5	3	2,75	2,5	-2,5	t										
25 m	2,7	▶	16,3	17	20	22	25	m													
			5	4,8	3,9	3,5	3	t													
20 m	2,7	▶	16,3	17	20	m															
			5	4,8	3,95	t															



52 m	2,05	▶	22,9	25	27	30	32	35	37	40	42	45	47	50	52	m
			3	2,7	2,5	2,2	2,05	1,85	1,75	1,6	1,5	1,35	1,3	1,2	1,15	t
50 m	2,05	▶	26,6	27	30	32	35	37	40	42	45	47	50	m		
			3	2,95	2,6	2,45	2,2	2,05	1,9	1,8	1,65	1,55	1,45	t		
45 m	2,05	▶	27,4	30	32	35	37	40	42	45	m					
			3	2,7	2,5	2,25	2,15	1,95	1,85	1,7	t					
40 m	2,05	▶	27,4	30	32	35	37	40	m							
			3	2,7	2,5	2,25	2,15	1,95	t							
35 m	2,05	▶	27,4	30	32	35	m									
			3	2,7	2,5	2,27	t									
30 m	2,05	▶	27,4	30	m											
			3	2,7	t											
25 m	2,05	▶	25	m												
			3	t												
20 m	2,05	▶	20	m												
			3	t												

Lest de base / Grundballast / Base ballast / Lastre de base / Zavorra di base
 Lastro da base / Базовый Балласт

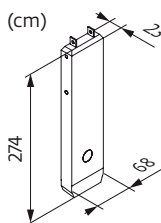
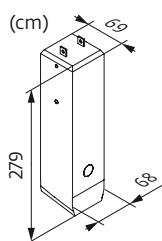
1,2 m	ZC 2030	H (m)	36,8	33,8	30,8	20,3			
		(t)	75	55	50	35			
		(t)	-	-	70	35			
	ZD 2030	H (m)	36,8	33,8	32,3	30,8	20,3		
		(t)	55	40	35	35	20		
		(t)	-	-	65	55	20		
1,2 m/1,6 m	ZC 4230	H (m)	38,9	35,9	32,9	31,9	30,4	27,4	22,4
		(t)	80	65	50	50	45	35	30
		(t)	-	-	-	80	70	50	30

Poids de flèche & lest de contre-flèche / Auslegergewicht & Gegenauslegerballast / Jib weight & counter-jib ballast / Peso de flecha y lastre de contra-flecha / Peso del braccio & zavorra di contro-braccio / Peso da lança & lastro da contra lança
 Вес стрелы и балласт контр-стрелы


	(kg) - 25 LVF (+/- 5%)					
	(2,5 t)		(3 t)	3000 kg	1000 kg	(kg)
52 m	6025	6270	5840	3	4	13000
50 m	5965	6210	5780	3	4	13000
45 m	5795	6040	5605	3	3	12000
40 m	5600	5850	5415	3	2	11000
35 m	5320	5565	5130	3	1	10000
30 m	5030	5275	4845	3	0	9000
25 m	4710	4955	4520	2	2	8000
20 m	4330	4575	4140	2	1	7000

CBP - 3000 kg

CBQ - 1000 kg

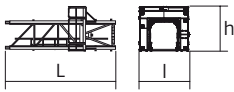
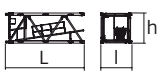
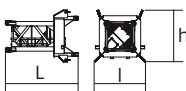
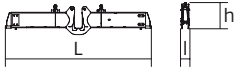
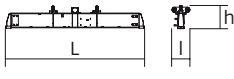


Encombremet et poids / Abmessungen und Gewicht / Dimensions and weight / Dimensiones y peso / Ingombro e peso
dimensões e pesos / габаритные размеры и вес

Partie tournante / Drehender Kranteil / Slewing crane part / Parte giratoria
Parte rotante / Parte rotativa / Поворотная часть :  52 m -  25 LVF



Partie tournante / Drehender Kranteil / Slewing crane part Parte giratoria / Parte rotante / Parte rotativa Поворотная часть		L (m)	l (m)	h (m)	kg (+/- 5%)
Contre-flèche / Gegenausleger Counter-jib / Contra-flecha Controbraccio / Contra-lança Контр-стрела		11,9 11,9	1,76 1,76	2,47 2,47	4380 4250
Cabine / Kabine Cab / Cabina Cabina / Cabina Кабина		2,9	2,38	3,03	1100
Elément de flèche / Auslegerement jib section / Elemento de flecha Elemento di braccio / Elemento de lança Секция стрелы		10,75	1,81	2,2	2820
Elément de flèche / Auslegerement jib section / Elemento de flecha Elemento di braccio / Elemento de lança Секция стрелы		10,21	0,8	1,95	1140
Elément de flèche / Auslegerement jib section / Elemento de flecha Elemento di braccio / Elemento de lança Секция стрелы		5,15 5,14 5,13 5,08	0,8 0,8 0,8 0,8	1,9 1,5 1,48 1	325 290 285 175
Elément de flèche / Auslegerement jib section / Elemento de flecha Elemento di braccio / Elemento de lança Секция стрелы		5,17 5,11	0,8 0,8	1,91 1,47	400 195
Elément de flèche / Auslegerement jib section / Elemento de flecha Elemento di braccio / Elemento de lança Секция стрелы		2,05	0,8	1	60
Chariot / Laufkatze Trolley / Carrello Carro / Carro-distribuidor Тележка		0,89	0,95	0,7	120
Moufle / Hubflasche Pulley block / Aparejo Bozzello / Cadernal Полиспаст		0,72	0,16	0,99	110
Chariot / Laufkatze Trolley / Carrello Carro / Carro-distribuidor Тележка		1,1	1	0,72	130
Chariot / Laufkatze Trolley / Carrello Carro / Carro-distribuidor Тележка		1,13	1	0,72	115
Chariot / Laufkatze Trolley / Carrello Carro / Carro-distribuidor Тележка		1,14	1	0,72	165
Moufle / Hubflasche Pulley block / Aparejo Bozzello / Cadernal Полиспаст		1,09	0,21	1,38	235
		0,74	0,2	1,13	135

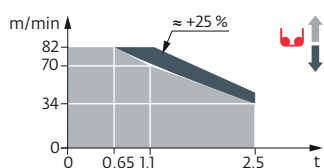
Рулоне / Kranturm / Crane tower Mástil / Torre / Torre Башня крана		L (m)	I (m)	h (m)	kg (+/- 5%)	
Cage de télescopage / Teleskopwagen Telescopic cage / Jaula de telescopaje Gabbia di telescopaggio / Gaiola de telescopagem для телескопирования крана		□1,2 m	6,26	2,8	2,41	1325
S20/S20-2 Mât de télescopage / Teleskopiermast Telescoping mast / Tramo de telescopaje Elemento di telescopaggio / Tramo de Telescopagem Мачта для телескопирования		□1,2 m	1,7	1,55	1,6	605
S 24ES-2 SR 24ES-2 SR 26E-2 S 28ES-2 SR 28ER-2		□1,2 m	10,7 10,7 10,75 10,75 10,75	1,28 1,26 1,27 1,26 1,27	1,28 1,26 1,27 1,26 1,27	2225 2215 2875 3420 4105
S 24D-2		□1,2 m	3,2	1,28	1,3	730
K 439A K 437A		□1,6 m	5,21 5,21	1,67 1,67	1,62 1,62	2230 1850
K40/L20-2 Mât raccord / Verbindungsmast Connecting mast / Tramo unión Elemento raccordo / Tramo raccordo Переходная мачта		□1,6/1,2 m	2,94	2,06	2,1	2100
Pied de scellement / Verankerungsfuss Fixing angles / Pie de empotramiento Montante da annegare / Angulos fixadores анкера		P 12C P 12D P 12ER P 41A	0,49 0,49 0,8 0,37	0,49 0,49 0,8 0,37	1,12 1,12 1,31 1,14	110 165 500 135
Bras de crois / Fundamentkreuzträger Cross girder / Brazo en cruz Braccio croce / Braço da cruz Поперечная балка		ZC 2030 ZC 4230 ZD 2030	5,63 5,64 6,62	0,47 0,47 0,47	1,45 1,33 1,45	1735 1895 1930
Bras de crois / Fundamentkreuzträger Cross girder / Brazo en cruz Braccio croce / Braço da cruz Поперечная балка		ZC 2030 ZC 4230 ZD 2030	5,63 5,64 6,62	0,82 0,82 0,82	1,16 1,05 1,16	1500 1590 1690

Mécánismes / Triebwerke / Mechanisms / Mecanismos / Meccanismi
 Mecanismos / Механизмы

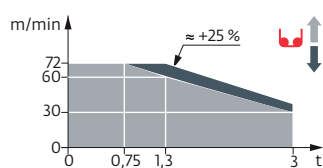
400 V - 50 Hz											ch - PS hp	kW	
	25 LVF 13 Optima	m/min	34	56	70	82	17	28	35	41	25	18	329 m
		t	2,5	1,45	1,1	0,65	5	2,9	2,2	1,3			
	25 LVF 15 Optima	m/min	30	48	60	72					25	18	228 m
		t	3	1,7	1,3	0,75							
	4 DVF 3	m/min	0 → 63								5	3,7	
	RVF 151 Optima+	tr/min U/min rpm	0 → 0,8								5,5	4	
	RT 224	m/min	25								2 x 4	2 x 2,9	
	RT 324	m/min	12,5 - 25								2 x 7	2 x 5,2	





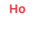
















	IEC 60204-32		kVA
400 V (+10% -10%) 50 Hz		25 LVF : 28 kVA	

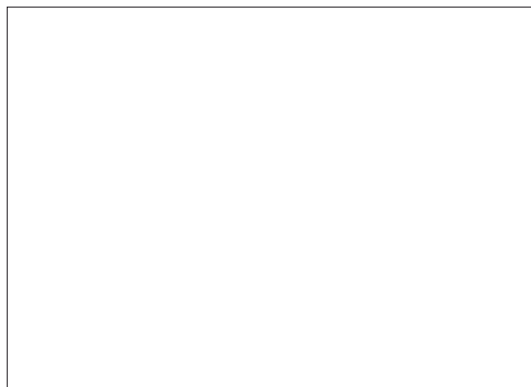
25 LVF 13 Optima



25 LVF 15 Optima



	FR	DE	EN	ES	IT	PT	RU
	Profil de vent suivant EN 14439 C25-D25	Windbedingungen gemäss EN 14439 C25-D25	Wind conditions according to EN 14439 C25-D25	Conformidad de los condiciones de viento EN 14439 C25-D25	Condizioni del vento secondo EN 14439 C25-D25	Perfil de vento conforme EN 14439 C25-D25	Ветровой режим в соответствии с EN 14439 C25-D25
	Appel de flèche	Auslegerüberhöhung	Jib elevation	Elevación de la flecha	Inclinazione braccio	Desvio da lança	подъем стрелы
	Équipements standards	Standardausrüstungen	Standard equipment	Equipamiento de serie	Equipaggiamento standard	Equipamento de série	Стандартное оборудование
	Équipements optionnels	Sonderausrüstungen	Options	Equipamiento opcional	Equipaggiamento in opzione	Equipamento opcional	Дополнительное оборудование (опция)
	Réactions en service	Reaktionskräfte in Betrieb	Reactions in service	Reacciones en servicio	Reazioni in servizio	Reacções em serviço	Реакция при работе
	Réactions hors service	Reaktionskräfte außer Betrieb	Reactions out of service	Reacciones fuera de servicio	Reazioni fuori servizio	Reacções fora de serviço	Реакция в покое
	Hauteur sans cabine	Höhe ohne Kabine	Height without cab	Altura sin cabina	Altezza senza cabina	Altura sem cabina	Высота без кабины
	Poids à vide sans lest avec flèche et hauteur maximum	Gewicht ohne Last, ohne Ballast, mit Ausleger und max. Höhe	Weight without load, without ballast, with jib and max. height	Peso en vacío sin lastre, con flecha y altura máxima	Peso a vuoto, senza zavorra, con braccio e altezza massimi.	Peso em vazio sem lastro com lança e altura máxima.	Вес пустого, без балласта, со стрелой, максимальной высоты.
	Poids de flèche	Auslegergewicht	Jib weight	Peso de flecha	Peso del braccio	Peso da lança	вес стрелы
	Poids total du lest	Ballast-Gesamtgewicht	Total ballast weight	Peso total del lastre	Peso totale della zavorra	Peso total do lastro	Общий вес балласта
	Camion 13,4 m	Lkw 13,4 m	Lorry 13,4 m	Camión 13,4 m	Camion 13,4 m	Camião 13,4 m	Рзровой автомобиль 13,4 м
	Conteneur High Cube 40', et/ou Flat Rack 20'	Container High Cube 40', and/oder Flat Rack 20'	Container High Cube 40', and/or Flat Rack 20'	Contenedor High Cube 40', y/o Flat Rack 20'	Container High Cube 40', e/o Flat Rack 20'	Contentor High Cube 40', e/ou Flat Rack 20'	40-футовый контейнер повышенной вместимости High Cube. и/или 20-футовая открытая платформа Flat Rack
	Cadre d'ancrage serré	Fester Verankerungsrahmen	Tightened anchorage frame	Marco de anclaje de apriete	Quadro di ancoraggio stretto	Quadro de amarração apertado	Прикрепленная анкерная рама
	Cadre d'ancrage desserré	Loser Verankerungsrahmen	Loosened anchorage frame	Marco de anclaje de desapriete	Quadro di ancoraggio allentato	Quadro de amarração solto	Отсоединенная анкерная рама
	Levage	Heben	Hoisting	Elevación	Sollevamento	Elevação	Подъем
	Distribution	Katzfahren	Trolleying	Distribución	Distribuzione	Distribuição	Перемещение по стреле
	Orientation	Schwenken	Slewing	Orientación	Rotazione	Rotação	Поворот
	Translation	Kranfahren	Travelling	Traslación	Traslazione	Translação	Перемещение крана
	Puissance requise	Erforderliche Leistung	Required power	Potencia Necesaria	Potenza richiesta	Potência Necessária	Потребляемая мощность
	Nous consulter	Auf Anfrage	Consult us	Consultarnos	Consultateci	Consultar-nos	Проконсультируйтесь у нас
	Document commercial non contractuel. Pour toute information technique se référer à la notice correspondante.	Unverbindliches Vertriebsdokument. Für technische Informationen, siehe die entsprechenden Anweisungen.	This commercial document is not legally binding. For any technical information, please refer to the corresponding instructions.	Documento comercial no contractual. Para cualquier información técnica, ver la noticia correspondiente.	Documento commerciale non vincolante, per tutte le informazioni tecniche fare riferimento al catalogo istruzioni.	Documento comercial não contratual. Para qualquer informação técnica complementar consultar as respectivas instruções.	Этот коммерческий документ не является юридически обязательным. Для получения технической информации, см. соответствующие инструкции.



Americas
Manitowoc, Wisconsin, USA
 Tel: +1 920 684 6621
 Fax: +1 920 683 6277

Shady Grove, Pennsylvania, USA
 Tel: +1 717 597 8121
 Fax: +1 717 597 4062

www.manitowoc.com

Europe, Middle East, Africa
Dardilly, France
 Tel: +33 (0)4 72 18 20 20
 Fax: +33 (0)4 72 18 20 00

China
Shanghai, China
 Tel: +86 21 6457 0066
 Fax: +86 21 6457 4955

Greater Asia-Pacific
Singapore
 Tel: +65 6264 1188
 Fax: +65 6862 4040