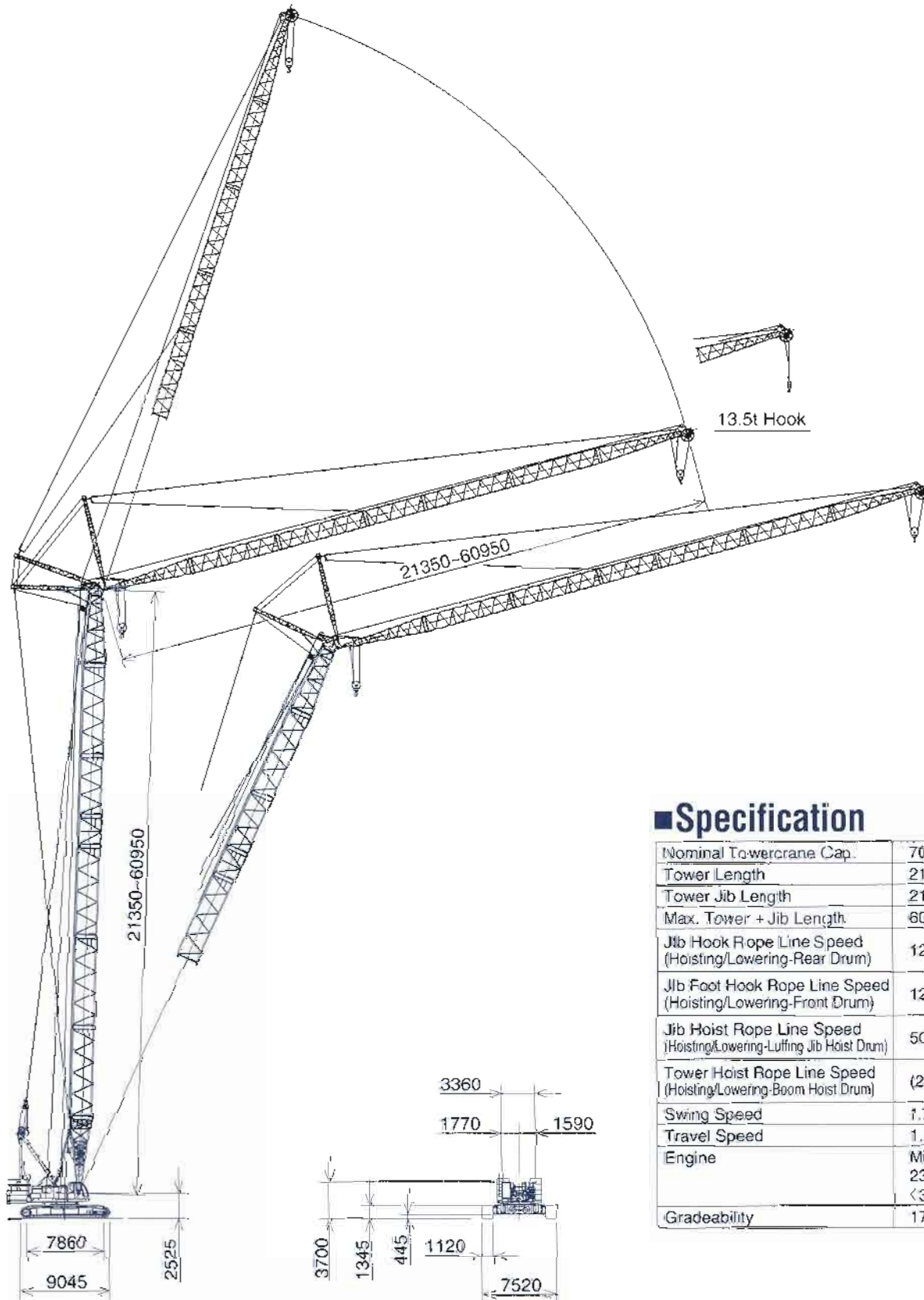




# SCX2500LF

250-M ton Hydraulic Crawler Crane  
Luffing Towercrane Att.



## ■ Specification

Nominal Towercrane Cap.	70.0 t × 11.0 m
Tower Length	21.35 m ~ 60.95 m
Tower Jib Length	21.35 m ~ 60.95 m
Max. Tower + Jib Length	60.95 m + 60.95 m
Jib Hook Rope Line Speed (Hoisting/Lowering-Rear Drum)	120 ~ 2.0 m/min
Jib Foot Hook Rope Line Speed (Hoisting/Lowering-Front Drum)	120 ~ 2.0 m/min
Jib Hoist Rope Line Speed (Hoisting/Lowering-Luffing Jib Hoist Drum)	50 ~ 2.0 m/min
Tower Hoist Rope Line Speed (Hoisting/Lowering-Boom Hoist Drum)	(24 ~ 1.0 m/min) × 2
Swing Speed	1.7 min <sup>-1</sup> (1.7 rpm)
Travel Speed	1.2/0.8 km/hr
Engine	Mitsubishi 6D24-TL 235kW/2,000min <sup>-1</sup> < 320 ps/2,000rpm >
Gradeability	17° (30%)

# Front-end Attachment

## TOWER BOOM:

Lattice construction, round tubular main chords, alloy, hi-ten steel, with bracing of round steel tubing.

Tower boom connections ..... In-line pin connections at 2.10m deep by 2.10m wide.

Basic tower ..... Four-piece, 21.35m basic length: 7.62m heavy-duty bottom section, one 6.10m heavy-duty tower extension with bridle rest, 7.24m heavy-duty tapered extension and 0.38m head section; provided with luffing jib hoist winch drum within bottom section with a guide sheave, a nylon guide sheave for luffing jib hoist cable pinned to on a part of 7.24m heavy-duty tapered extension, and two nylon guide sheaves for luffing jib/luffing jib foot crane hoist cables on tower head section. A 0.38m head section pins tower jib bottom section, front and rear posts.

Tower boom extension ..... Available in length 3.05m, 6.10m and 9.15m with tower boom/rear post pendants; a 6.10m extension is provided with boom hoist bridle rest.

Ultra heavy-duty tower boom extension ..... Available in two kinds of 9.15m long with tower boom/rear post pendants; one is boom bridle rest, and the other is w/out the bridle rest.

Tower boom length ..... 21.35m to 60.95m; the configuration of a 60.95m tower boom as maximum as recommended is as under: (1) 7.62m heavy-duty tower bottom section, (2) 9.15m ultra heavy-duty boom extension w/bridle rest x 1 pc., (3) 9.15m ultra heavy-duty boom extension x 2 pcs., (4) 3.05m heavy-duty boom extension x 1 pc., (5) 6.10m heavy-duty boom extension w/bridle rest x 1 pc., (6) 9.15m heavy-duty boom extension x 1 pc., (7) 7.24m heavy-duty tapered extension, and (8) 0.38m tower head section.

Tower boom luffing angle ..... 88° thru 65° (according to tower boom/luffing jib combination).

### Notes:

- All of tower booms except 0.38m tower head section are available to complete liftcrane boom attachment.
- As one of the cases, in converting luffing towercrane boom attachment of 60.95m as shown above as recommended one plus luffing jib from 51.80m to 60.95m shown in Tower Jib Configuration of page 26 here to liftcrane boom attachment of 88.40m as maximum as available, as a 3.05m boom extension and 7.24m heavy-duty tapered extension are not usable in this case although these two sections are available to use in other cases that the boom length don't exceeds 70.10m, a two-section consisting of one 9.15m heavy-duty boom extension and one 4.55m tapered boom extension is additionally required.

## TOWER JIB:

Lattice construction, round tubular main chords, alloy hi-ten steel, with bracing of round steel tubing.

Tower jib connections ..... In-line pin connections at 1.55m deep by 1.55m wide.

Basic tower jib ..... Three-pieces, 21.35m basic length; 9.15m bottom section, one 3.05m jib extension and 9.15m top section. A 9.15m bottom section can optionally provide a 3-nylon sheave machinery at a part of its foot for a 70t lift as max.

Tower jib top head machinery ..... Three head and two guide nylon sheaves mounted on anti-friction bearings.

Tower jib extensions ..... Available in 3.05m, 6.10m and 9.15m lengths with pendants.

Heavy-duty tower jib extension ..... Available in 9.15m with pendants.

Mid-point suspension cable ..... Required when tower jib length exceeds 51.80m

Maximum tower jib length ..... 60.95m; a 60.95m tower jib configuration is as under: (1) 9.15m bottom section, (2) 9.15m heavy jib extension x 2 pcs., (3) 3.05m jib extension x 2 pcs., (4) 9.15m jib extension x 2 pcs., and (5) 9.15m top section.

Tower jib luffing angle ..... Available from 15° thru 73° to ground (according to tower boom/luffing jib combination possible).

**Note:** All of tower jibs except 9.15m bottom section and 9.15m heavy extension are available to complete liftcrane attachment when its length exceeds 73.15m.

## FRONT AND REAR POSTS:

All-welded lattice construction; 8.9m long for front and 7.3m long for rear post. Pinned to tower jib bottom section and tower head section respectively. The posts each provided with a-four nylon sheave machinery for 8-part rope reeving between posts.

## HOOK BLOCKS:

To be selected from 80t, 35t and 13.5t hook blocks (as same as those of the HOOK BLOCKS mentioned in to "Crane 250 metric tons" of separate SCX2500LF SPECIFICATIONS)

## DRUM DATA:

See DRUM DATA mentioned into page 7 of separate SCX2500LF SPECIFICATIONS

## HOIST REEVING:

No. of part line	Luffing jib & jib foot crane hoists					
	6	5	4	3	2	1
Max. load (ton)	80.0	67.5	54.0	40.5	27.0	13.5

**Note:** The actual lifting capacity is, however, restricted by the crane capacity and/or by the SWL of appropriate hook capacity

## CABLES:

See CABLES mentioned into page 8 of separate SCX2500LF SPECIFICATIONS.

## WORKING WEIGHT:

Approx. 239ton with 60.95m tower boom, 60.95m tower jib, 93.7ton counterweight, 14.0ton carbody weight, 1,120mm wide track shoes and 80t hook block

## GROUND PRESSURE:

133.4kPa <1.36kg/cm<sup>2</sup>> under a 239ton working weight mentioned above.

# Luffing Towercrane Capacities 70 metric tons

## ■ w/21.35m Tower

Jib length (m)	21.35				24.40				27.45				30.50				33.50					
Tower angle (°)	88	85	75	65	88	85	75	65	88	85	75	65	88	85	75	65	88	85	75	65		
Working radius (m)																						
9.0	70.0/9.3																					
10.0	70.0				69.8/10.2																	
11.0	70.0	69.5/11.5			69.5				69.4/11.1													
12.0	63.9	68.5			69.2	69.0/12.6			68.9				68.7					62.5/12.9				
13.0	57.0	65.2			65.7	68.6			68.5	68.0/13.6			68.3					61.3				
14.0	51.3	58.2			59.3	67.0			67.3	67.9			67.9	67.8/14.6				59.6				
15.0	44.9	52.3			53.9	60.5			61.3	67.5			67.6	67.2				57.4	63.6/15.7			
16.0	37.6	47.4			49.3	55.0			56.2	62.4			62.7	62.1				55.6	61.8			
18.0	31.6	41.9	52.6/18.5		44.3	46.1			47.9	52.7			53.7	53.8				53.4	55.5			
20.0	26.3	35.3	47.1		37.9	41.8	47.6		43.9	45.3	43.4/21.5		46.5	47.1				46.9	48.5			
22.0	25.1	29.7	39.6		32.6	36.0	42.2		38.3	41.8	42.1		42.4	41.8	39.6/23.1			41.8	43.1			
24.0	23.9/23.4	26.2	33.6		27.9	31.0	37.9		33.4	36.5	37.8		38.2	37.5	37.5			37.6	38.7	36.3/24.6		
26.0		24.6/24.5	30.4	33.3	24.8	26.4	34.4	31.8/26.9	29.2	32.0	34.3		34.7	34.0	34.0			34.1	35.0	33.9		
28.0			25.1	30.4	24.0/26.3	24.6/27.4	31.4	30.3	26.9	27.9	31.3	29.0/28.9	31.0	31.0	31.1			31.2	32.0	31.0		
30.0			24.8/28.1	28.0			27.2	27.8	23.8/29.3	25.4	28.8	27.7	27.5	28.5	28.6	26.8/30.8		28.1	30.0	28.5		
32.0				26.3/31.6			24.6/31.1	25.7		24.4/30.4	26.6	25.6	24.0	25.2	26.4	25.6		25.2	27.1	26.4	24.7/32.6	
34.0								23.9			24.6	23.8	23.6/32.2	24.4/33.3	24.6	23.8		22.4	24.3	24.5	23.6	
36.0								23.5/34.5					22.2		22.9			20.7/35.2	21.5	22.8	22.0	
38.0													21.2/37.5		22.3/37.0			21.0/36.3	21.3	20.6		
40.0																		19.5			20.1/39.9	19.3
42.0																		19.2/40.4				18.2
44.0																						17.5/43.4

(EC404036)

## ■ w/21.35m Tower

Jib length (m)	36.55				39.60				42.65				45.70				48.75				
Tower angle (°)	88	85	75	65	88	85	75	65	88	85	75	65	88	85	75	65	88	85	75	65	
Working radius (m)																					
13.0	54.0/13.8																				
14.0	53.8				47.0/14.7																
15.0	53.3				46.8				41.3/15.6												
16.0	52.8	53.9/16.7			46.3	53.0/17.8			41.1				36.5/16.5					32.4/17.4			
18.0	52.2	53.0			45.8	49.5			40.6	44.5			36.2	40.5/19.8				32.2			
20.0	46.3	47.2			45.3	47.0			40.1	44.0			35.6	40.4				31.7	35.7/20.9		
22.0	41.1	42.9			40.5	43.3			39.5	43.0			35.0	39.5				31.2	35.5		
24.0	37.0	38.5			36.5	38.7			36.2	38.4			34.4	37.6				30.8	35.0		
26.0	33.5	35.4	33.8/26.1		33.1	34.9	31.2/27.6		32.8	34.6			32.5	34.3				30.4	32.6		
28.0	30.7	32.2	30.8		30.2	31.8	30.6		29.9	31.5	29.1/29.2		29.6	31.1				29.4	30.5		
30.0	28.2	29.5	28.3		27.8	29.1	28.1		27.5	28.8	28.1		27.2	28.5	27.1/30.7			27.0	28.3		
32.0	25.6	27.2	26.1		25.6	26.8	25.9		25.4	26.5	25.9		25.1	26.2	25.7			24.9	26.0	25.4/32.2	
34.0	23.1	24.8	24.2	22.8/34.8	23.4	24.8	24.1		23.6	24.5	24.0		23.3	24.2	23.8			23.1	24.1	23.7	
36.0	20.8	22.4	22.6	21.9	21.3	22.7	22.4	21.2/36.7	21.6	22.8	22.4		21.6	22.5	22.2			21.5	22.3	22.1	
38.0	18.3	20.1	21.1	20.5	19.3	20.7	20.9	20.3	19.7	21.0	20.9	19.6/38.7	19.9	21.0	20.7			20.0	20.8	20.6	
40.0	18.2/38.1	18.7/39.2	19.8	19.2	17.3	18.7	19.6	19.0	18.0	19.3	19.6	18.8	18.3	19.4	19.4	18.4/40.6		18.5	19.5	19.3	
42.0			18.6	18.1	16.3/41.0	16.7	18.5	17.9	16.3	17.6	18.4	17.7	16.8	17.9	18.2	17.6		17.1	18.1	18.1	17.1/42.6
44.0			18.3/42.9	17.0		16.5/42.2	17.4	16.9	14.5	15.9	17.4	16.7	15.3	16.4	17.2	16.6		15.7	16.7	17.1	16.4
46.0				16.1			16.7/45.8	16.0		14.9/45.1	16.4	15.8	13.8	14.9	16.2	15.6		14.4	15.4	16.2	15.5
48.0				16.0/46.3				15.1			15.6	14.9	13.1/46.9	13.4	15.3	14.8		13.1	14.1	15.4	14.6
50.0							14.6/48.3				15.3/48.7	14.2			14.5	14.0	11.8/48.9	12.8	14.6	13.9	
52.0												13.5			14.1/51.7	13.3		12.1/51.0	13.9	13.2	
54.0													13.4/52.2							13.2	12.5
56.0																12.3/55.1			13.1/54.8	11.9	
58.0																					11.4
60.0																					11.3/58.1

(EC404036)

## ■ w/21.35m Tower

Jib length (m)	51.80				54.85				57.90				60.95			
Tower angle (°)	88	85	75	65	88	85	75	65	88	85	75	65	88	85	75	65
Working radius (m)																
18.0	29.0/18.3				26.1/19.1											
20.0	28.8	33.2/21.9			25.9				23.6				21.4/20.9			
22.0	28.5	33.2			25.7	27.0/23.0			23.4				21.3			
24.0	28.2	33.0			25.5	26.8			23.2	24.4			21.1	21.2/25.1		
26.0	27.9	32.8			25.3	26.5			23.0	24.3			20.9	21.2		
28.0	27.5	32.6			25.0	26.3			22.8	24.2			20.7	21.1		
30.0	27.0	28.3			24.8	26.0			22.5	24.1			20.5	21.0		
32.0	24.9	26.0	23.8/33.7		24.6	25.1			22.3	23.8			20.3	20.9		
34.0	23.1	24.0	23.6		22.8	23.8	22.6/35.3		22.0	22.7			20.0	20.5		
36.0	21.4	22.3	21.9		21.2	22.1	22.0		21.0	21.6	21.3/36.8		19.5	20.0		
38.0	20.0	20.8	20.5		19.8	20.5	20.5		19.6	20.4	20.4		18.6	19.0	19.3/38.3	
40.0	18.7	19.4	19.3		18.5	19.2	19.2		18.3	19.0	19.1		17.7	18.2	18.8	
42.0	17.4	18.2	18.1		17.3	18.0	18.0		17.2	17.8	17.9		17.0	17.4	17.7	
44.0	16.1	17.0	17.1	15.9/44.6	16.1	16.9	17.0		16.2	16.7	16.8		16.0	16.6	16.7	
46.0	14.9	15.8	16.1	15.3	15.0	15.8	16.0	15.0/46.5	15.1	15.7	15.9		15.1	15.6	15.8	
48.0	13.7	14.6	15.3	14.5	13.9	14.7	15.2	14.3	14.0	14.8	15.0	14.2/48.5	14.1	14.7	14.9	
50.0	12.6	13.5	14.5	13.7	12.8	13.6	14.4	13.6	13.0	13.8	14.2	13.6	13.1	13.9	14.1	13.4/50.4
52.0	11.4	12.3	13.7	13.0	11.8	12.6	13.6	12.9	12.1	12.8	13.5	12.9	12.2	12.9	13.4	12.8
54.0	10.9/52.8	11.1/53.9	13.1	12.4	10.8	11.6	13.0	12.2	11.2	11.9	12.8	12.3	11.4	12.0	12.7	12.1
56.0			12.4	11.8	9.9/55.8	10.6	12.3	11.6	10.3	11.0	12.2	11.7	10.5	11.2	12.1	11.5
58.0			12.0/57.6	11.2		10.1/56.9	11.8	11.1	9.3	10.1	11.6	11.1	9.7	10.4	11.5	11.0
60.0				10.7			11.3	10.6	8.8/58.7	9.2/59.8	11.1	10.6	8.9	9.6	11.0	10.5
62.0				10.5/61.0			11.1/60.5	10.1			10.8	10.1	8.2/61.7	8.7	10.5	10.0
64.0								9.7			10.3/63.5	9.6		8.3/62.8	10.0	9.5
66.0												9.2			9.6	9.1
68.0												9.0/66.9			9.5/66.4	8.7
70.0																8.4/69.9

(EC404036)

## ■ w/24.40m Tower

Jib length (m)	21.35				24.40				27.45				30.50				33.50			
Tower angle (°)	88	85	75	65	88	85	75	65	88	85	75	65	88	85	75	65	88	85	75	65
Working radius (m)																				
9.0	19.6/9.4																			
10.0	19.5				18.4/12.3															
11.0	19.3	18.9/11.8			18.1				16.8/11.2											
12.0	14.7	18.7			18.6	18.2/12.8			16.4				16.3/12.1							
13.0	14.7	18.3			16.5	18.1			16.0	17.0/13.9			16.8				15.9/6			
14.0	14.8	18.3			15.9	17.7			16.6	17.5			16.2	16.8/14.9			15.9/0			
15.0	14.9	18.8			15.4	17.1			16.1	17.1			16.8	16.5			15.8/3	14.8/5.9		
16.0	14.7	18.6			14.9	16.3			15.7	16.9			16.3	16.4			15.7	16.4		
18.0	13.9	18.4	19.0/19.3		14.7	17.2			14.3	16.8			15.1	15.4			15.7	15.4		
20.0	13.1	18.1	18.8		13.8	17.1	14.5/20.8		14.3	16.1			14.9	18.5			14.7	18.5		
22.0	12.6	18.4	18.3		13.2	16.7	14.5		13.8	16.0	14.0/22.3		14.4	18.1	17.1/23.5		14.3	18.0	14.0	
24.0	12.0/23.5	18.2	18.8		12.8	16.6	13.7		13.7	17.2	13.4		13.9	18.7	17.0		13.8	18.6	14.3/25.4	
26.0		18.4/14.8	18.4	18.3/18.3	12.5	17.0	13.8		13.4	17.6	13.9		13.9	18.1	17.5		13.9	18.5	14.4	13.4
28.0			18.3	19.9	12.0/26.4	17.5/27.7	13.8	13.5/28.3	13.3	18.4	14.0		13.1	18.1	18.0		13.3	18.0	14.5	13.5
30.0			18.8/28.9	18.5			13.8	13.3	13.8/29.4	18.1	18.5	17.1/30.2	12.7	18.3	18.1		13.2	18.4	14.6	13.6
32.0				18.4			13.8/31.9	13.3		18.0/6	18.6	13.3	12.4	18.4	18.0		13.1	18.5	14.7	13.7
34.0				18.3/32.9				13.4			18.4	13.5	12.5/32.3	18.8/33.6	18.1	13.3	12.5	18.6	14.8	13.8
36.0								13.5/35.6				13.8/34.9	12.9				12.5	18.7	14.9	13.9
38.0												13.9/38.8	12.5				12.5	18.8	15.0	14.0
40.0													12.5/38.8				12.5	18.9	15.1	14.1
42.0																	12.5	19.0	15.2	14.2
44.0																		19.1	15.3	14.3
46.0																			19.2	14.4

(EC404036)

## ■ w/24.40m Tower

Jib length (m)	36.55				39.60				42.65				45.70				48.75			
Tower angle (°)	88	85	75	65	88	85	75	65	88	85	75	65	88	85	75	65	88	85	75	65
Working radius (m)	88	85	75	65	88	85	75	65	88	85	75	65	88	85	75	65	88	85	75	65
13.0	51.7/13.9																			
14.0	51.5				45.3/14.8															
15.0	51.0				45.0				39.9/15.7											
16.0	50.4	54.0/17.0			44.4				39.7				35.4/16.6					31.6/17.5		
18.0	49.3	53.5			43.8	49.5			39.2	40.5/19.1			35.2					31.0	35.2/21.2	
20.0	48.0	48.5			43.0	48.1			38.8	40.1			34.8	40.2/20.1				31.0	35.2/21.2	
22.0	42.7	43.1			42.2	42.6			38.2	38.5			34.4	39.0				30.6	34.9	
24.0	38.4	38.7			37.9	38.2			37.6	37.4			34.0	37.0				30.3	34.0	
26.0	34.7	35.1	31.8/26.9		34.3	34.6			34.0	34.6			33.7	34.5				29.9	33.1	
28.0	31.3	32.0	30.3		31.2	31.6	29.8/28.4		31.1	31.6			30.7	31.5				29.5	30.8	
30.0	28.3	29.5	27.9		28.3	29.0	27.8		28.3	29.3	27.8		28.2	28.8	26.1/31.5			27.6	28.6	
32.0	25.7	27.2	25.7		25.7	26.8	25.7		25.8	26.8	25.6		25.8	26.6	25.6			25.8	26.4	24.6/33.0
34.0	23.2	25.1	23.9		23.5	25.2	23.8		23.6	25.3	23.7		23.6	24.6	23.7			23.7	24.5	23.7
36.0	20.9	22.7	22.2	21.3/36.1	21.4	23.0	22.2		21.6	23.2	22.1		21.7	22.9	22.1			21.8	22.7	22.0
38.0	18.4	20.4	20.8	20.0	19.4	20.9	20.7	19.9	19.8	21.2	20.6		20.0	21.3	20.7			20.1	21.2	20.6
40.0	18.1/38.2	18.6/39.5	19.5	18.8	17.4	19.0	19.5	18.6	18.1	19.4	19.3	18.4	18.3	19.6	19.4	17.2/41.9		18.5	19.8	19.3
42.0			18.4	17.7	16.3/41.1	16.9	18.3	17.5	16.4	17.7	18.2	17.3	16.8	18.0	18.3	17.2	17.1	18.3	18.1	16.0/43.9
44.0			17.6/43.6	16.7		16.4/42.4	17.3	16.5	14.6	16.0	17.1	16.3	15.3	16.5	17.2	16.2	15.8	16.8	17.0	16.0
46.0				15.8		16.4	15.6	14.5/44.1	14.8/45.4	16.2	15.4	13.8	15.1	16.3	15.3	14.5	15.5	15.5	16.1	15.1
48.0				15.1/47.8		16.1/46.6	14.8			15.4	14.6	13.0/47.0	13.5	15.4	14.5	13.2	14.2	15.2	15.2	14.3
50.0							14.0			14.8/49.5	13.8		13.2/48.3	14.6	13.7	11.7	12.9	14.4	13.5	
52.0							13.8/50.5				13.1			13.9	13.0		12.0/51.3	13.7	12.8	
54.0											12.7/53.5			13.7/52.5	12.4			13.1	12.2	
56.0															11.8			12.6/55.4	11.6	
58.0															11.7/56.4				11.2	
60.0																				10.7/58.4

(EC404036)

## ■ w/24.40m Tower

Jib length (m)	51.80				54.85				57.90				60.95							
Tower angle (°)	88	85	75	65	88	85	75	65	88	85	75	65	88	85	75	65				
Working radius (m)	88	85	75	65	88	85	75	65	88	85	75	65	88	85	75	65				
18.0	28.3/18.4				25.6/19.3															
20.0	28.1				25.5				23.1/20.1				21.0/21.0							
22.0	27.7	33.1/22.2			25.2	27.0/23.2			22.9				20.9							
24.0	27.3	32.8			24.9	26.9			22.7	24.2/24.3			20.7	21.0/25.3						
26.0	26.9	32.4			24.6	26.5			22.5	24.1			20.5	21.0						
28.0	26.6	31.1			24.3	26.2			22.3	24.0			20.3	20.9						
30.0	26.2	28.5			24.0	26.0			22.1	23.9			20.1	20.8						
32.0	25.8	26.2			23.7	25.7			21.9	23.6			19.9	20.7						
34.0	23.9	24.2	23.1/34.5		23.1	24.7			21.7	22.8			19.7	20.4						
36.0	22.0	22.5	21.8		21.9	23.1	21.7/36.1		21.0	21.7	20.4/37.6		19.5	20.1						
38.0	20.4	21.6	20.4		20.3	21.5	20.3		20.1	20.7	20.1		18.6	19.2	19.0/39.1					
40.0	18.8	20.0	19.1		18.8	19.9	19.0		18.8	19.8	18.8		17.8	18.3	18.7					
42.0	17.4	18.5	17.9		17.4	18.5	17.8		17.5	18.5	17.6		17.0	17.5	17.5					
44.0	16.2	17.2	16.9	15.0/45.9	16.2	17.2	16.8		16.2	17.2	16.6		16.3	16.8	16.5					
46.0	14.9	15.9	15.9	14.9	15.0	16.0	15.8	14.1/47.8	15.1	16.0	15.6		15.2	16.0	15.5					
48.0	13.8	14.7	15.1	14.1	13.9	14.8	14.9	14.0	14.1	14.9	14.8	13.3/49.8	14.1	15.0	14.7					
50.0	12.6	13.6	14.3	13.3	12.9	13.8	14.2	13.2	13.1	13.9	14.0	13.3	13.2	14.0	13.9	12.6/51.7				
52.0	11.4	12.4	13.5	12.7	11.9	12.7	13.4	12.5	12.1	12.9	13.3	12.6	12.3	13.0	13.2	12.5				
54.0	10.8/52.9	11.2	12.9	12.0	10.8	11.7	12.8	11.9	11.2	12.0	12.6	11.9	11.4	12.1	12.5	11.8				
56.0		11.1/54.2	12.3	11.4	9.7/55.9	10.7	12.2	11.3	10.3	11.1	12.0	11.4	10.6	11.3	11.9	11.2				
58.0			11.7	10.9		10.1/57.1	11.6	10.8	9.3	10.2	11.4	10.8	9.7	10.5	11.3	10.7				
60.0			11.6/58.4	10.4		11.1	10.3	8.9/58.8	9.2	10.9	10.3	8.9	9.6	10.8	10.2					
62.0				10.0		10.8/61.3	9.8		9.1/60.1	10.4	9.8	8.1/61.8	8.8	10.3	9.7					
64.0				9.9/62.3			9.4				10.0	9.4		8.4/63.0	9.8	9.3				
66.0							9.1/65.3				9.9/64.3	9.0			9.4	8.9				
68.0												8.6			9.2/67.2	8.5				
70.0												8.5/68.2				8.1				
72.0																7.9/71.2				

(EC404036)

## ■ w/27.45m Tower

Jib length (m)	21.35				24.40				27.45				30.50				33.50					
Tower angle (°)	88	85	75	65	88	85	75	65	88	85	75	65	88	85	75	65	88	85	75	65		
Working radius (m)																						
9.0	69.5/9.6																					
10.0	69.4				69.2/10.4																	
11.0	69.2				69.0				68.7/11.3													
12.0	65.8	68.6			68.5				68.3				65.2/12.2									
13.0	58.3	68.1			67.2	67.8/13.1			67.8				64.9						56.7/13.1			
14.0	52.4	61.7			60.6	67.4			67.4	67.2/14.1			64.6						55.9			
15.0	47.4	55.3			55.0	63.8			64.3				64.3	66.8/15.2					54.9			
16.0	43.1	49.9			50.2	57.8			57.2	64.5			63.9	64.3					53.8	58.6/16.2		
18.0	38.3	41.4			42.4	48.3			48.7	55.0			54.5	55.3					52.5	55.2		
20.0	32.2	36.9	46.3/20.1		38.5	41.0	42.2/21.6		44.6	47.1			47.2	48.4					49.1	48.4		
22.0	26.9	31.1	41.5		33.1	37.4	41.3		38.8	40.8	39.0/23.1		43.6	43.0					43.7	42.9		
24.0	24.0/23.6	25.9	37.3		28.4	32.2	37.1		33.9	37.8	37.2		39.2	38.6	35.9/24.6				39.2	38.6		
26.0		24.7/25.0	33.8	30.0/27.5	25.4	27.6	33.6		29.6	33.2	33.7		35.1	35.0	33.5				35.1	34.9	33.0/26.2	
28.0			29.3	29.3	24.0/26.5	24.4	30.7	27.3/29.5	25.6	29.0	30.8		31.4	32.0	30.6				31.5	31.9	30.4	
30.0			24.7/29.7	26.9			28.2	26.8	23.8/29.5	24.9	26.3	25.3/31.5	27.9	29.8	28.1				28.4	29.3	27.9	
32.0				24.9			26.1	24.7		24.5/30.9	26.1	24.8	24.4	26.2	26.0	23.3/33.4			25.5	27.1	25.8	
34.0				23.1			24.5/32.7	23.0			24.3	23.0	23.7/32.4	22.7/33.9	24.1	22.8			22.7	25.1	23.9	21.5/35.4
36.0					22.9/34.2			21.4			23.0/35.6	21.4			22.5	21.3			20.7/35.4	22.3	22.3	21.1
38.0								20.6/37.1				20.1			21.1	19.9			21.1/36.8	20.9	19.7	
40.0												18.8			20.7/38.5	18.7				19.6	18.5	
42.0												18.7/40.1				17.6				18.7/41.5	17.4	
44.0																17.1/43.0					16.4	
46.0																						15.7/45.9

(EC404036)

## ■ w/27.45m Tower

Jib length (m)	36.55				39.60				42.65				45.70				48.75					
Tower angle (°)	88	85	75	65	88	85	75	65	88	85	75	65	88	85	75	65	88	85	75	65		
Working radius (m)																						
14.0	49.4				43.5/14.9																	
15.0	46.8				43.0				38.5/15.8													
16.0	48.2	53.2/17.3			42.1				38.1				34.3/16.7						30.7/17.6			
18.0	47.6	52.5			41.2	52.6/18.3			37.4	40.4/19.3			34.1						30.6			
20.0	47.0	48.1			40.3	48.1			36.7	39.5			33.6	40.4/20.4				30.2	34.0/21.4			
22.0	43.6	42.7			39.4	42.7			36.0	38.8			33.1	39.8				29.8	34.0			
24.0	38.9	38.2			38.6	38.4			35.3	38.4			32.6	38.6				29.4	33.8			
26.0	34.9	34.7	30.7/27.7		34.7	34.7			34.6	35.1			32.0	34.9				29.0	33.5			
28.0	31.5	31.7	30.3		31.4	31.7	28.9/29.2		31.3	32.0			31.2	31.8				28.6	31.1			
30.0	28.5	29.1	27.8		28.5	29.1	27.6		28.5	29.4	26.6/30.7		28.4	29.2				27.7	29.0			
32.0	25.8	26.9	25.7		25.9	26.8	25.5		26.0	27.1	25.5		25.9	26.9	25.1/32.3			25.9	26.8	23.9/33.8		
34.0	23.4	25.4	23.8		23.6	24.9	23.6		23.8	25.2	23.6		23.8	25.0	23.5			23.8	24.8	23.4		
36.0	21.0	23.0	22.2	20.0/37.3	21.5	23.3	22.0		21.8	23.3	22.0		21.8	23.2	21.9			21.9	23.1	21.7		
38.0	18.6	20.7	20.7	19.6	19.5	21.2	20.6	18.6/39.3	19.9	21.5	20.6		20.1	21.7	20.4			20.2	21.6	20.3		
40.0	18.2/38.3	18.7/39.7	19.5	18.4	17.5	19.2	19.3	18.2	18.2	19.7	19.3	17.2/41.3	18.4	19.9	19.2			18.6	19.8	19.0		
42.0			18.3	17.3	16.2/41.3	17.2	18.2	17.1	16.5	18.0	18.1	16.9	16.9	18.3	18.0	16.2/43.2		17.2	18.5	17.8		
44.0			17.3	16.3		16.5/42.7	17.1	16.1	14.7	16.3	17.1	15.9	15.4	16.8	17.0	15.8		15.8	17.1	16.8	15.1/45.2	
46.0			17.1/44.4	15.4			16.2	15.2	14.5/44.2	14.9/45.6	16.1	15.0	13.9	15.3	16.0	14.9		14.5	15.7	15.9	14.7	
48.0				14.6			15.8/47.4	14.4			15.3	14.2	13.0/47.1	13.8	15.2	14.1		13.2	14.4	15.0	13.9	
50.0				14.2/48.9				13.7			14.5	13.4		13.3/48.6	14.4	13.3		11.9	13.1	14.2	13.2	
52.0								13.1/51.8			14.4/50.3	12.8			13.7	12.6		11.8/50.1	12.1/51.5	13.5	12.5	
54.0												12.1			13.3/53.3	12.0				12.9	11.8	
56.0												11.9/54.6				11.4				12.3	11.3	
58.0																11.0/57.7				12.2/56.2	10.7	
60.0																					10.2	
62.0																						10.1/60.7

(EC404036)

## ■ w/27.45m Tower

Jib length (m)	51.80				54.85				57.90				60.95			
Tower angle (°)	88	85	75	65	88	85	75	65	88	85	75	65	88	85	75	65
Working radius (m)																
18.0	27.6/18.5				24.9/19.4											
20.0	27.5				24.8				22.6/20.2				20.6/21.1			
22.0	27.3	31.9/22.5			24.6	26.9/23.5			22.4				20.6			
24.0	27.1	31.8			24.4	26.9			22.2	23.4/24.5			20.5	20.5/25.6		
26.0	26.9	31.6			24.2	26.8			22.0	23.4			20.4	20.5		
28.0	26.7	31.0			24.0	26.7			21.8	23.3			20.3	20.4		
30.0	26.4	28.9			23.8	26.6			21.6	23.2			20.2	20.3		
32.0	26.1	26.6			23.6	26.2			21.4	23.1			20.1	20.2		
34.0	24.0	24.6	22.1/35.3		23.4	24.8			21.2	23.0			20.0	20.1		
36.0	22.1	22.9	21.6		22.0	23.0	20.8/36.8		21.0	21.8			19.6	20.0		
38.0	20.5	21.4	20.1		20.4	21.5	20.0		20.2	20.8	19.6/38.4		18.6	19.3	18.5/39.9	
40.0	18.9	20.2	18.8		18.9	20.1	18.7		18.9	19.9	18.5		17.3	18.4	18.4	
42.0	17.5	18.7	17.7		17.5	18.7	17.6		17.6	18.7	17.4		17.1	17.6	17.3	
44.0	16.2	17.4	16.6		16.3	17.4	16.5		16.3	17.4	16.4		16.3	16.9	16.2	
46.0	15.0	16.1	15.7	14.1/47.1	15.1	16.1	15.6		15.2	16.2	15.4		15.2	16.2	15.3	
48.0	13.8	14.9	14.8	13.7	14.0	15.0	14.7	13.4/49.1	14.1	15.1	14.6		14.2	15.1	14.4	
50.0	12.7	13.8	14.1	13.0	12.9	13.9	13.9	13.1	13.1	14.0	13.8	12.5/51.1	13.2	14.1	13.7	
52.0	11.5	12.6	13.3	12.3	11.9	12.9	13.2	12.4	12.2	13.1	13.1	12.2	12.3	13.2	12.9	11.8/53.0
54.0	10.9/53.0	11.4	12.7	11.7	10.9	11.9	12.6	11.7	11.3	12.1	12.4	11.6	11.5	12.3	12.3	11.5
56.0		11.4/54.5	12.1	11.1	9.8	10.8	12.0	11.2	10.3	11.2	11.8	11.0	10.6	11.4	11.7	10.9
58.0			11.5	10.5		10.0/57.4	11.4	10.6	9.4	10.3	11.2	10.5	9.8	10.6	11.1	10.3
60.0			11.2/59.2	10.1			10.9	10.1	8.9/58.9	9.3	10.7	10.0	9.0	9.8	10.6	9.8
62.0				9.6			10.4	9.6		9.1/60.4	10.2	9.5	8.2/61.8	8.9	10.1	9.4
64.0					9.2/63.7		10.3/62.1	9.2			9.8	9.0		8.3/63.3	9.7	8.9
66.0								8.8			8.6/65.0	8.6			9.3	8.5
68.0								8.7/66.6				8.3			8.9	8.2
70.0												8.0/69.5				7.8
72.0																7.5
74.0																7.4/72.4

(EC404036)

## ■ w/30.50m Tower

Jib length (m)	21.35				24.40				27.45				30.50				33.50				
Tower angle (°)	88	85	75	65	88	85	75	65	88	85	75	65	88	85	75	65	88	85	75	65	
Working radius (m)																					
9.0	69.3/9.7																				
10.0	69.2				68.8/10.6																
11.0	68.8				68.6				67.5/11.4												
12.0	66.4	68.4/12.3			68.1				67.5				61.5/12.3								
13.0	59.0	68.0			67.9	67.8/13.3			67.3				60.8					53.7/13.2			
14.0	53.0	63.7			61.2	67.4			67.1	67.0/14.4			59.8					53.3			
15.0	47.9	56.9			55.3	65.6			63.1	66.6			58.2	65.0/15.4				52.5			
16.0	43.5	51.3			50.7	59.3			57.7	64.9			56.8	64.1				51.7	54.0/16.5		
18.0	38.6	42.4			42.8	49.4			49.1	55.8			54.9	55.0				50.9	52.0		
20.0	32.5	37.8	43.3/20.9		38.9	41.9			42.3	48.0			47.6	48.1				49.5	48.0		
22.0	27.1	31.9	40.7		33.4	38.2	38.8/22.4		39.1	41.5	36.9/23.9		43.9	42.6				43.9	42.6		
24.0	24.0/23.7	26.6	36.5		28.6	32.9	36.6		34.2	38.5	36.7		39.5	36.3	33.8/25.4			39.5	38.3		
26.0		24.6/25.3	33.1		25.7	28.2	33.2		29.8	33.8	33.2		35.5	34.7	32.8			35.4	34.7	31.2/27.0	
28.0			30.2	27.7/28.8	24.0/26.6	25.2	30.3		25.8	29.5	30.3		31.7	31.7	30.0			31.8	31.6	29.9	
30.0			26.1	26.3		24.6/28.2	27.9	25.5/30.8	23.9/29.6	25.5	27.9		28.2	29.1	27.5			28.6	29.1	27.5	
32.0			24.7/30.5	24.3			25.8	24.3		24.4/31.2	25.8	23.5/32.8	24.7	26.7	25.5			25.7	26.8	25.3	
34.0				22.6			24.5/33.4	22.6			23.9	22.5	23.8/32.5	24.4	23.6	21.7/34.7		23.0	24.9	23.4	
36.0				21.4/35.5				21.0				22.3	20.8		24.2/34.1	22.0	20.7	20.9/35.5	22.7	21.7	20.0/36.7
38.0								19.7				22.0/36.4	19.6			20.6	19.4		21.4/37.1	20.3	19.2
40.0								19.4/38.4				18.4			19.8/39.3	18.2			19.1	18.0	
42.0													17.7/41.3			17.1			18.0	16.9	
44.0																16.2			17.9/42.3	16.0	
46.0																16.0/44.3				15.1	
48.0																					14.6/47.2

(EC404036)

## ■ w/30.50m Tower

Jib length (m)	36.55				39.60				42.65				45.70				48.75				
Tower angle (°)	88	85	75	65	88	85	75	65	88	85	75	65	88	85	75	65	88	85	75	65	
Working radius (m)																					
14.0	47.2/14.1																				
15.0	46.6				41.7				37.1/15.9												
16.0	45.9	51.0/17.5			41.2				37.0				33.1/16.8				29.7/17.7				
18.0	45.2	50.0			40.7	49.0/18.6			36.6	40.4/19.6			32.9				29.6				
20.0	44.5	48.2			40.2	47.9			36.2	40.3			32.6	38.8/20.6			29.3	33.1/21.7			
22.0	43.9	42.7			39.6	42.5			35.8	40.0			32.3	38.6			29.0	33.1			
24.0	39.2	38.3			38.9	38.2			35.4	38.3			32.0	38.2			28.7	32.9			
26.0	35.2	34.7			35.0	34.6			34.9	34.6			31.7	34.5			28.4	32.7			
28.0	31.7	31.7	29.1/28.5		31.6	31.5			31.5	31.6			31.4	31.5			28.1	31.4			
30.0	28.7	29.1	27.3		28.7	29.0	27.1		28.7	29.0	25.6/31.5		28.6	28.9			27.8	28.8			
32.0	26.0	26.9	25.2		26.1	26.8	25.0		26.2	26.8	25.1		26.1	26.7	23.9/33.1		26.1	26.5			
34.0	23.6	25.0	23.4		23.8	24.8	23.2		24.0	24.8	23.3		23.9	24.8	23.1		24.0	24.6	22.5/34.6		
36.0	21.2	23.3	21.8		21.7	23.1	21.6		21.9	23.2	21.7		22.0	23.1	21.5		22.1	22.9	21.4		
38.0	18.8	21.1	20.4	18.7/38.6	19.7	21.6	20.2		20.1	21.7	20.2		20.2	21.5	20.1		20.4	21.4	19.9		
40.0	18.3/38.4	18.7	19.1	17.9	17.7	19.6	18.9	17.4/40.6	18.4	20.0	19.0		18.6	20.1	18.9		18.8	20.3	18.7		
42.0			18.0	16.8	16.3/41.4	17.6	17.8	16.6	16.7	18.3	17.8	16.1/42.6	17.1	18.5	17.7		17.3	18.7	17.5		
44.0			16.9	15.8		16.6/43.0	16.8	15.7	15.0	16.6	16.8	15.4	15.6	17.0	16.7	15.1/44.5	*6.0	17.3	16.5		
46.0			16.4/45.2	15.0			16.0	14.8	14.7/44.3	14.9/45.9	15.9	14.6	14.1	15.6	15.8	14.4	14.7	16.0	15.6	14.1/46.5	
48.0				14.2			15.0	14.0			15.0	13.8	13.2/47.2	14.1	15.0	13.7	13.4	14.7	14.7	13.8	
50.0				13.5			14.9/48.2	13.3			14.3	13.1		13.5/48.8	14.2	12.9	12.0	13.4	14.0	12.8	
52.0				13.4/50.2				12.6			13.9/51.1	12.4			13.5	12.3	11.8/50.2	12.2/51.8	13.3	12.1	
54.0								12.3/53.1					11.8			12.8	11.7			12.6	11.5
56.0													11.2			12.7/54.1	11.1			12.0	10.9
58.0													11.1/56.1				10.6			11.8/57.0	10.4
60.0																	10.4/59.0				9.9
62.0																					9.5

(EC404036)

## ■ w/30.50m Tower

Jib length (m)	51.80				54.85				57.90				60.95				
Tower angle (°)	88	85	75	65	88	85	75	65	88	85	75	65	88	85	75	65	
Working radius (m)																	
18.0	26.8/18.6				24.3/19.5												
20.0	26.6				24.2				22.1/20.4				20.2/21.2				
22.0	26.3	26.9/22.7			24.0	26.2/23.8			22.0				20.2				
24.0	26.0	26.8			23.8	26.2			21.9	22.8/24.8			20.1	20.0/25.9			
26.0	25.7	26.6			23.6	26.0			21.8	22.8			20.0	20.0			
28.0	25.4	26.3			23.4	25.8			21.7	22.7			19.9	19.9			
30.0	25.1	26.0			23.2	25.6			21.6	22.6			19.8	19.8			
32.0	24.8	25.7			22.9	25.4			21.5	22.5			19.7	19.7			
34.0	24.2	24.5			22.6	24.6			21.4	22.3			19.5	19.6			
36.0	22.3	22.7	21.1/36.1		22.2	22.9	19.9/37.6		21.2	22.0			19.3	19.5			
38.0	20.6	21.2	19.8		20.5	21.4	19.7		20.2	21.0	18.7/39.2		18.7	19.4			
40.0	19.1	19.9	18.5		19.0	20.0	18.4		19.0	20.0	18.2		17.9	18.5	17.7/40.7		
42.0	17.7	18.7	17.4		17.7	18.8	17.3		17.7	18.9	17.1		17.1	17.7	17.0		
44.0	16.4	17.6	16.3		16.4	17.6	16.2		16.4	17.6	16.1		16.4	17.0	15.9		
46.0	15.1	16.3	15.4		15.2	16.3	15.3		15.3	16.4	15.1		15.3	16.3	15.0		
48.0	14.0	15.1	14.6	13.4/48.4	14.1	15.2	14.5		14.2	15.3	14.3		14.3	15.3	14.2		
50.0	12.8	14.0	13.8	12.8	13.1	14.1	13.7	12.5/50.4	13.2	14.2	13.5		13.3	14.3	13.4		
52.0	11.7	12.8	13.1	12.1	12.0	13.1	13.0	12.0	12.3	13.2	12.8	11.7/52.3	12.4	13.3	12.7		
54.0	11.0/53.1	11.7	12.4	11.5	11.0	12.1	12.3	11.4	11.4	12.3	12.2	11.2	11.6	12.4	12.0	11.0/54.3	
56.0		11.4/54.5	11.9	10.9	9.9	11.0	11.7	10.8	10.5	11.4	11.6	10.7	10.7	11.6	11.5	10.6	
58.0			11.3	10.4	9.8/56.1	10.0/57.7	11.2	10.3	9.5	10.5	11.0	10.1	9.9	10.7	10.9	10.0	
60.0			10.8/59.9	9.9			10.7	9.8	9.0/59.0	9.5	10.5	9.7	9.1	9.9	10.4	9.6	
62.0				9.5			10.2	9.4		9.2/60.6	10.0	9.2	8.2	9.1	9.9	9.1	
64.0				9.1			10.0/62.9	9.0				9.6	8.8		8.4/63.6	9.5	8.7
66.0					8.9/64.9			8.6				9.2/65.8	8.4			9.1	8.3
68.0								8.2/67.8					8.0			8.7	7.9
70.0													7.7		8.5/68.8	7.6	
72.0													7.5/70.8				7.2
74.0																	7.0/73.7

(EC404036)



## ■ w/33.50m Tower

Jib length (m)	21.35				24.40				27.45				30.50				33.50			
Tower angle (°)	88	85	75	65	88	85	75	65	88	85	75	65	88	85	75	65	88	85	75	65
Working radius (m)																				
9.0	69.1/9.8																			
10.0	69.0				67.5/10.7															
11.0	68.6				67.5				66.5/11.6											
12.0	67.2	67.8/12.6			67.2				66.2				54.0/12.4							
13.0	59.8	67.4			66.9	67.0/13.6			65.5				53.2				51.0/13.3			
14.0	53.6	65.7			61.9	66.4			64.7	66.1/14.7			51.8				50.5			
15.0	48.4	58.6			56.1	66.1			63.7	65.8			50.5	53.3/15.7			50.1			
16.0	43.9	52.7			51.2	60.8			58.3	64.7			49.2	53.2			48.8	53.1/16.7		
18.0	39.0	43.4			43.2	50.5			49.5	55.7			47.5	52.7			47.1	52.0		
20.0	32.8	38.7	40.8/21.7		39.2	42.8			42.6	46.9			45.8	48.2			45.4	48.1		
22.0	27.4	32.6	40.1		33.7	38.9	37.7/23.2		39.4	42.3			44.2	42.8			44.1	42.7		
24.0	24.0/23.8	27.3	36.0		28.9	33.6	36.1		34.4	37.2	34.9/24.7		39.7	38.4			39.7	38.4		
26.0		24.4/25.6	32.6		26.0	28.8	32.7		30.1	34.4	32.8		35.6	34.8	32.1/26.2		35.5	34.9	29.7/27.8	
28.0			29.8		24.1/26.7	25.9	29.9		26.0	30.1	29.9		31.8	31.8	29.6		31.8	31.8	29.5	
30.0			27.4	25.8/30.1		24.5/28.5	27.5		23.9/29.7	26.0	27.5		28.3	29.3	27.2		28.7	29.2	27.1	
32.0			24.7/31.3	23.9			25.4	23.7/32.1		24.6/31.4	25.4		24.8	27.1	25.2		25.8	27.0	25.1	
34.0				22.2			23.6	22.0			23.6	22.0	23.7/32.6	24.8	23.4		23.0	25.0	23.3	
36.0				20.7			23.4/34.2	20.5			22.0	20.5		24.3/34.4	21.8	20.2	20.7/35.6	23.0	21.7	
38.0				20.2/36.7				19.2			21.1/37.2	19.1			20.4	18.9		21.7/37.3	20.3	18.7
40.0								18.2/39.7				18.0			19.0	17.8			19.0	17.5
42.0												16.9			18.9/40.1	16.7			17.9	16.5
44.0												16.6/42.6				15.8			17.3/43.1	15.5
46.0															15.1/45.6					14.7
48.0																				13.9
50.0																				13.7/48.5

(EC404036)

## ■ w/33.50m Tower

Jib length (m)	36.55				39.60				42.65				45.70				48.75			
Tower angle (°)	88	85	75	65	88	85	75	65	88	85	75	65	88	85	75	65	88	85	75	65
Working radius (m)																				
14.0	44.9/14.2																			
15.0	44.3				39.9/15.1															
16.0	43.5	48.0/17.8			39.8				35.6				31.9/16.9				28.9/17.8			
18.0	42.7	47.0			39.6	38.9/18.8			35.5	38.5/19.9			31.9				28.8			
20.0	41.9	46.0			39.4	38.6			35.4	38.5			31.8	38.0/20.9			28.7			
22.0	41.1	42.6			39.2	37.9			35.3	37.8			31.7	37.7			28.6	32.4		
24.0	39.4	38.2			39.0	37.2			35.2	37.1			31.6	37.0			28.5	32.1		
26.0	35.3	34.6			35.1	34.5			35.0	34.5			31.5	34.4			28.4	31.8		
28.0	31.8	31.6	27.7/29.3		31.7	31.4			31.6	31.5			31.4	31.4			28.2	31.3		
30.0	28.8	29.0	26.9		28.8	28.0	25.8/30.8		28.8	28.9			28.7	28.9			27.9	28.7		
32.0	26.1	26.8	24.9		26.2	26.7	24.6		26.2	26.7	24.5/32.3		26.2	26.6	22.7/33.8		26.2	26.5		
34.0	23.6	24.9	23.1		23.8	24.8	22.8		24.0	24.8	22.9		24.0	24.7	22.5		24.0	24.5	21.3/25.4	
36.0	21.3	23.2	21.5		21.7	23.1	21.2		22.0	23.1	21.3		22.0	23.0	20.9		22.1	22.9	20.8	
38.0	18.9	21.3	20.1	17.5/39.9	19.7	21.5	19.8		20.1	21.6	19.9		20.3	21.5	19.6		20.4	21.4	19.5	
40.0	18.3/38.5	18.9	18.9	17.4	17.7	19.8	18.6	18.2/41.9	18.4	20.2	18.7		18.6	20.1	18.3		18.8	20.0	18.2	
42.0		18.5/40.3	17.7	16.4	16.2/41.5	17.8	17.5	16.2	16.7	18.5	17.5	15.1/43.8	17.1	18.7	17.2		17.4	18.9	17.1	
44.0			16.7	15.4		16.6/43.2	16.5	15.2	14.9	16.8	16.5	15.0	15.6	17.2	16.2	14.1/45.8	16.0	17.4	16.1	
46.0			15.8	14.6			15.5	14.4	14.5/44.4	15.0	15.6	14.2	14.1	15.7	15.3	14.0	14.7	16.1	15.2	13.4/47.8
48.0				13.8			14.8	13.6		14.8/46.2	14.8	13.4	13.0/47.4	14.2	14.5	13.3	13.4	14.8	14.4	13.3
50.0				13.1			14.4/49.0	12.9			14.0	12.7		13.3/49.1	13.7	12.6	12.0	13.5	13.6	12.6
52.0				12.6/51.5				12.3			13.4/51.9	12.0			13.0	11.9	11.7/50.3	12.1	12.9	11.9
54.0								11.7				11.4			12.3	11.3			12.3	11.3
56.0								11.5/54.4				10.9			12.2/54.8	10.8			11.7	10.8
58.0												10.5/57.4				10.3			11.3/57.8	10.3
60.0																9.8				9.8
62.0																9.7/60.3				9.4
64.0																				9.1/63.2

(EC404036)

## ■ w/33.50m Tower

Jib length (m)	51.80				54.85				57.90				60.95			
	88	85	75	65	88	85	75	65	88	85	75	65	88	85	75	65
18.0	26.0/18.7				23.7/19.6											
20.0	25.9				23.7				21.6/20.5				19.7/21.4			
22.0	25.7	25.9/23.0			23.5				21.6				19.7			
24.0	25.5	25.8			23.3	25.6			21.5	22.4/25.1			19.6			
26.0	25.3	25.6			23.1	25.4			21.4	22.4			19.5	19.6/23.1		
28.0	25.1	25.4			22.9	25.2			21.3	22.3			19.4	19.6		
30.0	24.9	25.2			22.7	25.0			21.2	22.2			19.3	19.5		
32.0	24.6	25.0			22.5	24.8			21.1	22.1			19.2	19.4		
34.0	24.2	24.4			22.3	24.4			21.0	22.0			19.1	19.3		
36.0	22.3	22.7	20.3/36.8		22.1	22.8			20.9	21.6			18.9	19.2		
38.0	20.6	21.2	19.5		20.6	21.3	19.1/38.4		20.3	21.1	18.0/39.9		18.7	18.9		
40.0	19.1	19.8	18.2		19.1	20.0	18.1		19.1	19.8	17.9		17.9	18.6	16.9/41.5	
42.0	17.7	19.1	17.1		17.7	18.8	17.0		17.7	18.6	16.8		17.1	17.8	16.7	
44.0	16.4	17.7	16.1		16.4	17.7	16.0		16.5	17.7	15.8		16.4	17.0	15.7	
46.0	15.2	16.4	15.2		15.2	16.5	15.0		15.3	16.5	14.9		15.3	16.4	14.7	
48.0	14.0	15.2	14.3	12.5/49.7	14.1	15.3	14.2		14.2	15.4	14.0		14.3	15.4	13.9	
50.0	12.8	14.1	13.6	12.4	13.1	14.2	13.4	11.7/51.7	13.2	14.3	13.3		13.3	14.4	13.2	
52.0	11.7	12.9	12.9	11.8	12.0	13.2	12.7	11.7	12.3	13.3	12.6	11.0/53.8	12.4	13.4	12.5	
54.0	11.0/53.2	11.8	12.2	11.2	11.0	12.1	12.1	11.0	11.4	12.4	11.9	10.9	11.6	12.5	11.8	10.3/55.6
56.0		11.2/55.0	11.6	10.6	9.9	11.1	11.5	10.5	10.5	11.5	11.3	10.3	10.7	11.6	11.2	10.2
58.0			11.1	10.1	9.7/56.2	10.0/57.9	11.0	10.0	9.5	10.6	10.8	9.8	9.9	10.8	10.7	9.7
60.0			10.6	9.6			10.5	9.5	8.9/59.1	9.6	10.3	9.3	9.1	10.0	10.2	9.2
62.0			10.4/60.7	9.2			10.0	9.1		9.1/60.9	9.8	8.9	8.2	9.2	9.7	8.8
64.0				8.8			9.6/63.7	8.7			9.4	8.5	8.1/62.1	8.4/63.8	9.3	8.4
66.0				8.4				8.3			9.0	8.1			8.9	8.0
68.0				8.3/66.2				7.9			8.9/66.6	7.7			8.5	7.6
70.0								7.7/69.1				7.4			8.2/69.6	7.3
72.0												7.1				7.0
74.0												7.0/72.1				6.7
76.0																6.5/75.0

(EC404036)

## ■ w/36.55m Tower

Jib length (m)	21.35				24.40				27.45				30.50				33.50			
	88	85	75	65	88	85	75	65	88	85	75	65	88	85	75	65	88	85	75	65
9.0	67.5/9.9																			
10.0	67.5				67.3/10.8															
11.0	67.2				67.2				62.0/11.7											
12.0	66.9	67.0/12.8			66.9				61.8				54.0/12.5							
13.0	66.6	66.4			66.6	66.1/13.9			61.1				53.1				48.1/13.4			
14.0	54.2	66.1			62.6	66.0			60.4	65.7/14.9			51.7				47.8			
15.0	48.9	60.3			56.7	65.7			59.7	65.6			50.4				47.2			
16.0	44.4	54.1			51.7	62.5			58.8	64.0			49.1	53.0			46.6	52.9/17.0		
18.0	39.4	44.5			43.5	51.7			49.9	55.0			47.4	52.5			46.0	52.1		
20.0	33.1	39.5			39.5	43.7			42.9	48.2			45.7	48.0			45.4	47.9		
22.0	27.7	33.3	38.9/22.4		33.9	39.7			39.7	42.6			42.2	42.6			44.1	42.5		
24.0	24.0/23.9	28.0	35.7		29.1	34.2	35.6		34.7	38.5	33.1/25.5		39.5	38.2			39.7	38.2		
26.0		24.7/25.8	32.4		26.2	29.4	32.3		30.3	35.0	32.3		35.9	34.6	30.5/27.0		35.8	34.6		
28.0			29.6		23.8/26.9	24.8	29.5		26.2	30.6	29.5		32.0	31.6	29.1		32.2	31.6	25.4/28.5	
30.0			27.8	23.9/31.4		24.4/28.6	27.1		23.9/29.8	26.6	27.1		28.5	29.1	26.5		29.0	29.0	26.6	
32.0			24.9	23.3			25.1	21.9/33.4		24.5/31.7	25.0		25.1	26.9	24.7		26.1	26.8	24.6	
34.0			24.6/32.1	21.6			23.3	21.4			23.2	20.4/35.3	23.9/32.7	25.0	22.8		23.3	24.9	22.8	
36.0				20.2			22.4/35.0	20.0			21.7	19.9		24.8/34.6	21.3	18.8/37.3	21.9/35.7	23.2	21.3	
38.0				18.8				18.7			20.3	18.6			19.9	18.4		22.2/37.6	19.9	17.3/39.2
40.0								17.5				17.5			18.6	17.3			18.7	16.9
42.0								17.0/41.0				16.4			18.3/40.9	16.2			17.5	15.9
44.0												15.8/43.9			15.3				16.8/43.9	15.0
46.0															14.5					14.1
48.0															14.1/48.9					13.4
50.0																				12.7/49.8

(EC404036)

## ■ w/36.55m Tower

Jib length (m)	36.55				39.60				42.65				45.70				48.75							
Tower angle (°)	88	85	75	65	88	85	75	65	88	85	75	65	88	85	75	65	88	85	75	65				
Working radius (m)																								
14.0	42.8/14.3																							
15.0	42.4				38.1/15.2																			
16.0	41.8				37.9				34.2/16.1								30.8/17.0			27.8/17.9				
18.0	41.2	48.5			37.4	37.2/19.1			33.8								30.7			27.7				
20.0	40.6	47.8			36.9	37.1			33.4	36.9/20.1							30.4	36.7/21.2		27.5				
22.0	40.0	42.4			36.4	36.8			33.0	36.7							30.1	36.6		27.3	31.7/22.2			
24.0	39.4	38.2			35.9	36.5			32.6	36.4							29.8	36.3		27.1	31.5			
26.0	35.6	34.6			35.4	34.3			32.2	34.3							29.5	34.0		26.9	31.2			
28.0	32.1	32.6			31.9	32.2			31.8	31.3							29.2	31.0		26.7	30.8			
30.0	29.0	29.0	26.3/30.1		29.0	28.7	24.8/31.6		29.0	28.6							28.9	28.5		26.5	28.4			
32.0	26.3	26.8	24.4		26.4	26.5	24.4		26.4	26.4	23.3/33.1						26.4	26.3		26.3	26.2			
34.0	23.8	24.9	22.7		24.0	24.6	22.6		24.2	24.5	22.6						24.2	24.3	21.9/34.6		24.2	24.3		
36.0	21.5	23.2	21.1		21.9	22.9	21.0		22.2	22.9	21.0						22.2	22.7	20.8		22.3	22.6	20.6/36.2	
38.0	19.1	21.5	19.7		19.9	21.4	19.7		20.3	21.4	19.6						20.4	21.2	19.5		20.5	21.1	19.3	
40.0	18.3/38.6	19.4	18.5	16.3/41.2	17.9	20.0	18.5		18.5	20.1	18.4						18.8	19.8	18.2		19.0	19.8	18.1	
42.0		18.9/40.5	17.4	15.9	16.3/41.6	18.1	17.4	15.1/43.2	16.9	18.7	17.2						17.2	18.6	17.1		17.5	18.5	17.0	
44.0			16.4	14.9		16.6/43.5	16.4	14.8	15.1	17.1	16.2	14.1/45.1					15.8	17.4	16.2		16.1	17.4	16.0	
46.0			15.5	14.1			15.5	13.9	14.6/44.5	15.3	15.3	13.7	14.3	16.0	15.3	13.4/47.1	14.8	16.0	15.3		14.8	16.3	15.0	
48.0				13.3			14.6	13.2		14.3/46.4	14.5	12.9	13.1/47.5	14.5	14.4	13.0	13.5	15.0	14.2		13.5	15.0	14.2	12.5
50.0				12.7			14.1/49.7	12.5			13.8	12.2		13.4/49.4	13.7	12.4	12.2	13.7	13.5		12.2	13.7	13.5	12.2
52.0				12.1				11.9				13.1	11.6				13.0	11.7	11.9/50.4		12.4	12.8	11.5	
54.0				11.9/52.8				11.3				12.8/52.7	11.0				12.4	11.1			12.2/52.3	12.2	10.9	
56.0								10.8/55.7					10.5				11.9/55.6	10.6				11.6	10.4	
58.0													10.0					10.1				11.0	9.9	
60.0													9.9/58.6					9.6				10.9/58.6	9.4	
62.0																		9.3/61.6					9.0	
64.0																							8.6	
66.0																							8.5/64.5	

(EC404036)

## ■ w/36.55m Tower

Jib length (m)	51.80				54.85				57.90				60.95			
Tower angle (°)	88	85	75	65	88	85	75	65	88	85	75	65	88	85	75	65
Working radius (m)																
18.0	25.2/18.8				23.0/19.7											
20.0	25.2				23.0				21.0/20.6					19.3/21.5		
22.0	25.1	25.8/23.3			22.9				20.9					19.3		
24.0	25.0	25.7			22.8	25.1/24.3			20.8	21.8/25.3				19.2		
26.0	24.9	25.5			22.7	25.0			20.7	21.8				19.1	19.1/26.4	
28.0	24.8	25.3			22.6	24.8			20.6	21.7				19.0	19.1	
30.0	24.7	25.1			22.5	24.6			20.5	21.6				18.9	19.0	
32.0	24.6	24.9			22.4	24.4			20.4	21.5				18.8	18.9	
34.0	24.4	24.3			22.3	24.2			20.3	21.4				18.6	18.8	
36.0	22.5	22.6	19.3/37.7		22.1	22.7			20.2	21.3				18.4	18.7	
38.0	20.8	21.1	19.1		20.7	21.2	18.2/39.2		20.1	21.2				18.2	18.6	
40.0	19.2	19.7	17.9		19.2	19.8	17.8		19.2	19.7	17.2/40.7			17.9	18.5	
42.0	17.8	18.5	16.8		17.8	18.6	16.7		17.8	18.5	16.5			17.2	17.9	18.2/42.3
44.0	16.5	17.4	15.8		16.5	17.6	15.7		16.6	17.4	15.5			16.5	17.1	15.4
46.0	15.3	16.4	14.9		15.3	16.7	14.8		15.4	16.7	14.6			15.5	16.4	14.5
48.0	14.1	15.4	14.0		14.2	15.5	13.9		14.4	15.6	13.8			14.4	15.6	13.6
50.0	13.0	14.3	13.3	11.7/51.0	13.2	14.4	13.2		13.4	14.5	13.0			13.4	14.5	12.9
52.0	11.8	13.1	12.6	11.4	12.2	13.3	12.5	10.9/53.0	12.4	13.5	12.3			12.5	13.6	12.2
54.0	11.0/53.3	12.0	12.0	10.8	11.1	12.3	11.9	10.7	11.5	12.6	11.7	10.2/54.9		11.6	12.7	11.6
56.0		11.4/55.3	11.4	10.2	10.0	11.3	11.3	10.1	10.6	11.6	11.1	9.9	10.8	11.8	11.0	9.8/56.9
58.0			10.9	9.7	9.9/56.3	10.2	10.7	9.6	9.6	10.7	10.6	9.4	10.0	11.0	10.4	9.3
60.0			10.4	9.3		10.1/58.2	10.3	9.2	9.0/59.2	9.8	10.1	9.0	9.2	10.2	9.9	8.9
62.0			10.0/61.5	8.8			9.8	8.7		9.3/61.1	9.6	8.6	8.3	9.3	9.5	8.4
64.0				8.4			9.4	8.3			9.2	8.2	8.2/62.2	8.4	9.1	8.0
66.0				8.1			9.3/64.5	7.9			8.8	7.8		8.3/64.1	8.7	7.7
68.0				7.8/67.5				7.6			8.5/67.4	7.4			8.3	7.3
70.0								7.3				7.1			7.9	7.0
72.0								7.2/70.4				6.8			7.8/70.4	6.7
74.0												6.8/73.4				6.4
76.0																6.1
78.0																6.0/76.3

(EC404036)

## ■ w/39.60m Tower

Jib length (m)	21.35				24.40				27.45				30.50				33.50			
Tower angle (°)	88	85	75	65	88	85	75	65	88	85	75	65	88	85	75	65	88	85	75	65
Working radius (m)																				
10.0	67.5				67.1/10.9															
11.0	67.1				67.0				54.0/11.8											
12.0	66.8				66.7				54.0				51.4/12.7							
13.0	61.2	53.3/13.1			66.4				53.8				51.2				45.5/13.5			
14.0	54.8	53.2			63.3	52.9/14.1			53.6				50.7				45.4			
15.0	49.4	53.0			57.3	52.8			53.4	52.8/15.2			50.2				45.2			
16.0	44.8	52.8			52.2	52.6			53.2	52.4			49.7	52.3/16.2			45.0	52.0/17.3		
18.0	39.7	45.6			43.9	52.3			50.3	52.1			49.2	52.0			44.8	51.8		
20.0	33.4	40.5			39.8	44.6			43.3	48.2			48.6	47.8			44.6	47.7		
22.0	28.0	34.1	38.7/23.2		34.2	40.5			40.0	42.9			42.5	42.4			44.1	42.3		
24.0	24.1	28.7	35.2		29.4	34.9	33.7/24.8		34.9	38.6			39.7	38.1			39.7	37.9		
26.0		24.9	31.9		26.5	30.0	31.8		30.5	35.0	31.3/26.3		36.0	34.5	28.9/27.8		35.9	34.4		
28.0		24.5/26.1	29.1		23.8/27.0	25.5	29.1		26.4	31.2	29.0		32.1	31.5	28.7		32.3	31.4	27.0/29.3	
30.0			26.7		24.8/29.0	26.7			23.9/29.9	27.1	26.6		28.6	29.0	26.3		29.0	28.8	26.2	
32.0			24.7	22.0/32.7			24.7			24.4	24.6		25.2	26.8	24.3		26.1	25.6	24.2	
34.0			23.9/32.9	21.0			22.9	20.3/34.7			22.8		23.8/32.8	24.9	22.6		23.3	24.7	22.4	
36.0				19.6			21.5/35.8	19.4			21.3	18.9/36.6		24.2/34.9	21.0		20.7/35.8	23.0	20.9	
38.0				18.3				18.1			19.9	18.0			19.6	17.5/38.6		21.8/37.9	19.5	
40.0				17.5/39.3				17.0			19.4/38.8	16.9			18.4	16.7			18.3	16.2/40.5
42.0								16.0				15.9		17.6/41.7	15.7				17.2	15.5
44.0								15.8/42.3				15.0			14.8				16.2	14.6
46.0												14.5/45.2			14.0				16.0/44.6	13.8
48.0															13.2					13.0
50.0															13.1/48.2					12.3
52.0																				12.0/51.1

(EC404036)

## ■ w/39.60m Tower

Jib length (m)	36.55				39.60				42.65				45.70				48.75			
Tower angle (°)	88	85	75	65	88	85	75	65	88	85	75	65	88	85	75	65	88	85	75	65
Working radius (m)																				
14.0	40.5/14.4																			
15.0	40.5				36.4/15.3															
16.0	40.4				36.3				32.8/16.2				29.6/17.1							
18.0	40.2	40.1/18.3			36.1	39.7/19.4			32.7				29.6				26.8			
20.0	40.0	39.7			35.9	39.5			32.5	39.5/20.4			29.5	36.0/21.4			26.7			
22.0	39.8	39.3			35.7	39.1			32.3	39.0			29.4	35.7			26.6	26.9/22.5		
24.0	39.5	38.1			35.5	37.9			32.1	38.0			29.3	35.1			26.5	26.7		
26.0	35.7	34.4			35.3	34.3			31.9	34.4			29.2	33.0			26.4	26.4		
28.0	32.2	31.4			32.0	31.4			31.7	31.4			29.1	31.1			26.3	26.1		
30.0	29.1	28.9	25.3/30.9		29.1	28.8			29.1	28.8			28.9	28.6			26.2	25.8		
32.0	26.4	26.7	24.3		26.4	26.4	23.7/32.4		26.5	26.6	22.2/33.9		26.4	26.4			26.1	25.5		
34.0	23.9	24.7	22.5		24.1	24.7	22.3		24.2	24.7	22.1		24.2	24.5	20.9/35.4		24.2	24.3		
36.0	21.5	23.1	21.0		21.9	23.0	20.7		22.2	23.0	20.6		22.2	22.8	20.5		22.3	22.6	19.7/36.9	
38.0	19.2	21.6	19.6		19.9	21.5	19.4		20.3	21.6	19.2		20.4	21.3	19.1		20.6	21.1	18.9	
40.0	17.3/38.7	19.6	18.4		17.9	20.1	18.2		18.6	20.2	18.0		18.8	19.9	17.9		19.0	19.8	17.7	
42.0		18.8/40.8	17.3	15.1/42.5	16.2/41.7	18.3	17.1		16.9	18.9	16.9		17.2	18.7	16.8		17.5	18.6	16.6	
44.0			16.3	14.4		16.7/43.7	16.1	14.0/44.5	15.1	17.2	15.9		15.8	17.6	15.8		16.1	17.8	15.6	
46.0			15.4	13.6			15.2	13.4	14.5/44.6	15.5	15.0	13.3/45.4	14.3	16.1	14.9		14.8	16.4	14.7	
48.0			14.8/47.6	12.9			14.4	12.7	14.9/46.7	14.2	12.7	13.1/47.6	14.6	14.1	12.4/48.4		13.5	15.1	13.9	
50.0				12.2			13.6	12.0			13.5	12.0		13.4/49.8	13.4	11.9	12.2	13.8	13.2	11.6/50.3
52.0				11.6			13.5/50.5	11.4			12.8	11.4			12.7	11.3	11.8/50.5	12.5	12.5	11.1
54.0				11.0				10.9			12.3/53.5	10.8			12.1	10.7		12.1/52.6	11.9	10.5
56.0								10.3				10.3			11.5	10.2			11.3	10.0
58.0								10.1/57.0				9.8			11.4/56.4	9.7			10.8	9.5
60.0												9.4/59.9				9.2			10.4/59.4	9.1
62.0																8.8				8.6
64.0																8.6/62.9				8.2
66.0																				7.9/65.8

(EC404036)

## ■ w/39.60m Tower

Jib length (m)	51.80				54.85				57.90				60.95			
Tower angle (°)	88	85	75	65	88	85	75	65	88	85	75	65	88	85	75	65
Working radius (m)	88	85	75	65	88	85	75	65	88	85	75	65	88	85	75	65
18.0	24.4/18.9				22.3/19.8											
20.0	24.4				22.3				20.4/20.7				18.8/21.8			
22.0	24.3	26.7/23.5			22.2				20.4				18.8			
24.0	24.2	26.6			22.1	24.4/24.6			20.3	21.3/25.6			18.7			
26.0	24.1	26.3			22.0	24.3			20.2	21.3			18.6	18.7/26.7		
28.0	24.0	26.0			21.9	24.1			20.1	21.2			18.5	18.7		
30.0	23.9	25.7			21.8	23.9			20.0	21.1			18.4	18.6		
32.0	23.8	25.4			21.7	23.7			19.9	21.0			18.3	18.5		
34.0	23.7	24.1			21.6	23.5			19.8	20.9			18.1	18.4		
36.0	22.5	22.4			21.5	22.5			19.7	20.8			17.9	18.3		
38.0	20.8	20.9	18.4/38.5		20.7	21.0			19.5	20.5			17.7	18.2		
40.0	19.3	19.6	17.5		19.2	19.7	17.4		19.2	19.6	16.4/41.5		17.5	18.1		
42.0	17.8	18.4	16.4		17.8	18.5	16.3		17.8	18.4	16.1		17.2	18.0	15.5/43.0	
44.0	16.5	17.3	15.5		16.5	17.4	15.3		16.6	17.3	15.2		16.5	17.2	15.0	
46.0	15.3	16.8	14.6		15.3	16.8	14.4		15.4	16.3	14.3		15.5	16.5	14.1	
48.0	14.1	15.5	13.8		14.2	15.6	13.6		14.4	15.7	13.5		14.4	15.7	13.3	
50.0	13.0	14.4	13.0		13.2	14.5	12.9		13.3	14.6	12.7		13.4	14.6	12.6	
52.0	11.8	13.2	12.3	10.8/52.3	12.1	13.4	12.2		12.4	13.6	12.0		12.5	13.7	11.9	
54.0	10.9/53.5	12.1	11.7	10.3	11.1	12.4	11.6	10.2/54.3	11.5	12.6	11.4		11.6	12.7	11.3	
56.0		11.2/55.5	11.1	9.8	10.0	11.4	11.0	9.7	10.5	11.7	10.8	9.5/56.2	10.8	11.9	10.7	
58.0			10.6	9.3	9.7/56.4	10.3	10.5	9.2	9.6	10.8	10.3	9.0	10.0	11.0	10.2	8.9/58.2
60.0			10.1	8.9		10.0/58.5	10.0	8.8	9.0/59.3	9.9	9.8	8.6	9.1	10.2	9.7	8.5
62.0			9.7	8.5			9.5	8.4		9.2/61.4	9.4	8.2	8.3	9.4	9.2	8.1
64.0			9.6/62.3	8.1			9.1	8.0			8.9	7.8	8.1/62.3	8.5	8.8	7.7
66.0				7.7			8.9/63.3	7.6			8.5	7.4		8.3/64.4	8.4	7.3
68.0				7.4				7.3			8.2	7.1			8.1	7.0
70.0				7.2/68.8				6.9			8.1/69.2	6.8			7.7	6.7
72.0								6.7/71.7				6.5			7.5/71.1	6.4
74.0												6.2				6.1
76.0												6.1/74.7				5.8
78.0																5.6/77.6

(EC404036)

## ■ w/42.65m Tower

Jib length (m)	21.35				24.40				27.45				30.50				33.50				
Tower angle (°)	88	85	75	65	88	85	75	65	88	85	75	65	88	85	75	65	88	85	75	65	
Working radius (m)	88	85	75	65	88	85	75	65	88	85	75	65	88	85	75	65	88	85	75	65	
10.0	57.4/10.1																				
11.0	67.0				54.0				53.7/11.9												
12.0	66.7				53.8				53.7				48.3/12.8								
13.0	62.0	53.2/13.4			53.6				53.5				48.1						43.1/13.7		
14.0	55.4	53.1			53.4	53.1/14.4			53.3				47.6						43.0		
15.0	50.0	53.0			53.1	53.0			53.1	52.8/15.5			47.1					42.6			
16.0	45.3	52.8			52.7	52.8			52.9	52.5			46.6	48.7/16.5				42.2	48.5/17.5		
18.0	40.1	46.8			44.3	52.0			50.7	51.5			46.1	48.3				41.8	48.2		
20.0	33.7	41.4			40.2	45.6			43.6	48.1			45.6	47.7				41.4	47.6		
22.0	28.2	34.9			34.5	41.4			40.2	42.7			42.8	42.3				41.0	42.1		
24.0	24.4	29.4	34.9		29.6	35.6	32.2/25.5		35.2	38.4			39.7	37.9				39.6	37.8		
26.0	24.1/24.1	25.7	31.6		26.8	30.6	31.4		30.7	34.8	29.7/27.1		36.0	34.3				36.0	34.2		
28.0		24.8/26.3	28.8		23.8/27.1	26.1	28.7		26.6	31.7	28.5		32.4	31.3	27.8/28.6			32.5	31.2		
30.0			26.5			24.5/29.3	26.3		23.9	27.6	26.2		28.8	28.8	26.2			29.2	28.6	25.9/30.1	
32.0			24.5				24.3						25.1	24.2				26.3	26.5	24.0	
34.0			22.9/33.7	20.4			22.6	18.9/35.9		24.6/32.2	22.4		23.7/33.0	24.7	22.5			23.5	24.6	22.3	
36.0				19.0			21.0	18.8			20.9	17.6/37.9		23.5/35.2	20.9			20.8/35.9	22.9	20.7	
38.0				17.8			20.6/36.6	17.6			19.6	17.5			19.6	16.2/39.9			21.3	19.4	
40.0				16.7				16.5			18.6/39.5	16.4			18.4	16.2			21.2/38.1	18.2	15.1/41.8
42.0				16.4/40.6				15.5				15.4			17.3	15.2				17.1	15.0
44.0								14.8/43.6				14.6			17.0/42.5	14.3				16.1	14.1
46.0												13.8			13.5					15.5/45.4	13.3
48.0												13.8/46.5			12.8						12.6
50.0															12.3/48.4						11.9
52.0																					11.3
54.0																					11.2/52.4

(EC404036)

## ■ w/42.65m Tower

Jib length (m)	36.55				39.60				42.65				45.70				48.75			
Tower angle (°)	88	85	75	65	88	85	75	65	88	85	75	65	88	85	75	65	88	85	75	65
Working radius (m)																				
14.0	38.7/14.5																			
15.0	38.5				34.8/15.4															
16.0	38.1				34.2				31.4/16.3				28.5/17.2							
18.0	37.7	38.7/18.6			33.8	38.6/19.6			31.2				28.4				25.9/18.1			
20.0	37.3	38.5			33.4	38.6			30.9	38.1/20.7			28.2	34.5/21.7			25.8			
22.0	36.9	38.1			33.0	38.2			30.6	38.0			28.0	34.5			25.6	26.9/22.8		
24.0	36.5	37.6			32.6	37.8			30.3	37.9			27.8	34.2			25.4	26.8		
26.0	35.8	34.1			32.2	34.2			30.0	34.3			27.6	33.9			25.2	26.5		
28.0	32.4	31.1			31.8	31.2			29.7	31.4			27.4	30.9			25.0	26.4		
30.0	29.3	28.6	24.3/31.6		29.2	28.7			29.2	28.8			27.2	28.4			24.8	26.2		
32.0	26.5	26.4	23.9		26.6	26.5	22.6/33.2		26.7	26.6			26.6	26.2			24.6	26.1		
34.0	24.0	24.5	22.2		24.2	24.6	22.0		24.4	24.7	21.2/34.7		24.4	24.3			24.4	24.2		
36.0	21.7	22.8	20.6		22.1	23.0	20.4		22.3	23.1	20.2		22.4	22.6	20.0/36.2		22.4	22.5	18.8/37.7	
38.0	19.3	21.3	19.3		20.1	21.5	19.1		20.4	21.6	18.9		20.6	21.1	18.7		20.7	21.0	18.6	
40.0	18.3/38.8	20.0	18.1		18.1	20.1	17.9		18.7	20.2	17.7		18.9	19.8	17.5		19.1	19.7	17.4	
42.0		19.2/41.1	17.0	14.1/43.8	16.3/41.8	18.6	16.8		17.0	19.0	16.6		17.4	18.6	16.5		17.6	18.5	16.3	
44.0			16.0	14.0		16.5	15.8	13.1/45.7	15.2	17.5	15.6		15.9	17.5	15.5		16.2	17.4	15.3	
46.0			15.1	13.2			15.0	13.0	14.5/44.7	15.8	14.7	12.4/47.7	14.4	16.3	14.6		14.9	16.4	14.4	
48.0			14.3	12.4			14.2	12.3		14.9/47.0	13.9	12.3	13.1/47.7	14.8	13.8	11.6/49.7	13.6	15.3	13.6	
50.0			14.2/48.4	11.8			13.4	11.6			13.2	11.6		13.3/49.9	13.1	11.5	12.3	14.0	12.9	10.8/51.6
52.0				11.2			13.0/51.3	11.0			12.5	11.0			12.4	10.9	11.9/50.6	12.7	12.2	10.7
54.0				10.6				10.5			11.9	10.4			11.8	10.3		12.1/52.3	11.6	10.1
56.0				10.3/55.3				10.0			11.8/54.3	9.9			11.3	9.8			11.1	9.6
58.0								9.5				9.4			10.9/57.2	9.3			10.6	9.2
60.0								9.4/58.3				9.0				8.9			10.1	8.7
62.0												8.7/61.2				8.5			10.0/60.2	8.3
64.0																8.1				7.9
66.0																8.0/64.2				7.6
68.0																				7.4/67.1

(EC404036)

## ■ w/42.65m Tower

Jib length (m)	51.80				54.85				57.90				60.95			
Tower angle (°)	88	85	75	65	88	85	75	65	88	85	75	65	88	85	75	65
Working radius (m)																
18.0	23.6/19.0				21.8/19.9											
20.0	23.5				21.6				19.9/20.8				18.3/21.7			
22.0	23.4	24.2/23.8			21.5				19.8				18.3			
24.0	23.3	24.1			21.4	23.9/24.8			19.7	20.8/25.9			18.2			
26.0	23.2	23.9			21.3	23.8			19.6	20.8			18.1	18.3/26.9		
28.0	23.1	23.7			21.2	23.6			19.5	20.7			18.0	18.3		
30.0	23.0	23.5			21.1	23.4			19.4	20.6			17.9	18.2		
32.0	22.9	23.3			21.0	23.2			19.3	20.5			17.8	18.1		
34.0	22.8	23.1			20.9	23.0			19.2	20.4			17.7	18.0		
36.0	22.7	22.3			20.8	22.7			19.1	20.3			17.6	17.9		
38.0	20.9	20.8	17.6/39.3		20.7	21.2			19.0	20.1			17.5	17.8		
40.0	19.4	19.5	17.2		19.3	19.9	16.6/40.8		18.9	19.8			17.4	17.7		
42.0	17.9	18.3	16.1		17.9	18.7	16.0		17.9	18.6	15.6/42.3		17.3	17.5	14.8/43.8	
44.0	16.6	17.2	15.1		16.6	17.6	15.0		16.7	17.5	14.8		16.5	17.1	14.7	
46.0	15.4	16.2	14.3		15.4	16.6	14.1		15.5	16.6	14.0		15.5	16.1	13.8	
48.0	14.2	15.4	13.5		14.3	15.8	13.3		14.4	15.6	13.2		14.5	15.2	13.0	
50.0	13.0	14.6	12.7		13.3	14.7	12.6		13.4	14.8	12.4		13.5	14.4	12.3	
52.0	11.9	13.4	12.1	10.0/53.7	12.2	13.6	11.9		12.5	13.7	11.8		12.6	13.7	11.6	
54.0	11.1/53.6	12.3	11.5	10.0	11.2	12.6	11.3	9.5/55.5	11.5	12.8	11.2		11.7	12.9	11.0	
56.0		11.3/55.8	10.9	9.4	10.1	11.6	10.8	9.3	10.6	11.9	10.6	8.8/57.5	10.9	12.0	10.5	
58.0			10.4	9.0	9.8/56.5	10.5	10.2	8.8	9.7	10.9	10.1	8.7	10.0	11.2	9.9	8.2/59.3
60.0			9.9	8.5		10.1/58.7	9.8	8.4	9.0/59.5	10.0	9.6	8.2	9.2	10.3	9.5	8.1
62.0			9.4	8.1			9.3	8.0		9.2/61.7	9.1	7.8	8.3	9.5	9.0	7.7
64.0			9.2/63.1	7.8			8.9	7.6			8.7	7.4	8.1/62.4	8.7	8.6	7.3
66.0				7.4			8.5	7.3			8.3	7.1		8.4/64.6	8.2	7.0
68.0				7.1				6.9			8.0	6.8			7.8	6.7
70.0				6.7				6.6			7.8/69.0	6.5			7.5	6.3
72.0				6.6/70.1				6.3				6.2			7.2/71.9	6.1
74.0								6.2/73.0				5.9				5.8
76.0												5.6/75.9				5.5
78.0																5.3
80.0																5.2/78.9

(EC404036)

## ■ w/45.70m Tower

Jib length (m)	21.35				24.40				27.45				30.50				33.50			
	88	85	75	65	88	85	75	65	88	85	75	65	88	85	75	65	88	85	75	65
10.0	54.0/10.2																			
11.0	54.0				53.8/11.1															
12.0	53.8				53.7				50.8				45.4/12.9							
13.0	53.6	53.1/13.6			53.5				50.0				45.4				40.8/13.8			
14.0	53.4	53.0			53.3	52.7/14.7			49.2				45.1				40.7			
15.0	50.5	52.8			53.1	52.6			48.4	52.4/15.7			44.8				40.5			
16.0	45.8	52.6			52.9	52.4			47.6	52.2			44.5	51.3/16.8			40.3	50.8/17.8		
18.0	40.5	48.0			44.7	51.3			46.8	51.1			44.2	51.0			40.1	50.6		
20.0	34.0	39.9			40.5	46.6			43.9	47.8			43.9	47.4			39.9	47.3		
22.0	28.5	35.7			34.8	39.7			40.5	42.4			43.1	42.0			39.7	41.9		
24.0	24.8	30.1	32.8/24.8		29.8	36.3			35.4	38.1			39.7	37.7			39.5	37.6		
26.0	24.1/24.2	26.5	31.0		27.0	31.3	30.4/26.3		31.0	34.6	28.1/27.9		36.0	34.1			36.0	34.2		
28.0		24.7/26.6	28.3		23.8/27.2	26.7	28.1		26.9	31.6	28.0		32.6	31.1	26.4/29.4		32.7	31.0		
30.0			26.0			24.4/29.6	25.8		24.2	28.2	25.7		29.1	28.6	25.8		29.5	28.5	24.6/30.9	
32.0			24.0				23.9		23.9/30.1	25.7	23.7		25.7	26.4	23.8		26.5	26.3	23.6	
34.0			22.2	18.8/35.3			22.1			24.5/32.5	22.0		23.8/33.1	24.5	22.1		23.7	24.4	21.8	
36.0			21.9/34.4	18.3			20.6	17.4/37.2			20.5			23.4/36.4	20.6		20.7	22.8	20.3	
38.0				17.2			19.7/37.4	17.0			19.2	16.2/39.2			19.2			21.3	19.0	
40.0				16.1				15.9			18.0	15.8			18.0	15.0/41.2		21.1/38.4	17.8	
42.0				15.2/41.9				15.0			17.8/40.3	14.9			16.9	14.6			16.8	13.9/43.1
44.0								14.1				13.9			16.3/43.3	13.8			15.8	13.5
46.0								13.8/44.8				13.3				13.0			14.9	12.8
48.0												12.8/47.8				12.3			14.8/46.2	12.1
50.0																11.7				11.5
52.0																11.6/50.7				10.9
54.0																				10.4/53.7

(EC404036)

## ■ w/45.70m Tower

Jib length (m)	36.55				39.60				42.65				45.70				48.75			
	88	85	75	65	88	85	75	65	88	85	75	65	88	85	75	65	88	85	75	65
14.0	36.7/14.6																			
15.0	36.6				33.2/15.5															
16.0	36.4				33.1				30.1/16.4				27.4/17.3							
18.0	36.2	39.8/18.8			32.9	39.5/19.9			30.0				27.4				25.0/18.2			
20.0	36.0	39.7			32.7	39.5			29.8	37.7/20.9			27.3				24.9			
22.0	35.8	39.4			32.5	39.0			29.6	37.5			27.2	33.5			24.8	27.0/23.0		
24.0	35.6	37.7			32.3	37.5			29.4	37.1			27.1	33.2			24.7	26.9		
26.0	35.4	34.1			32.1	34.0			29.2	34.1			27.0	32.9			24.6	26.7		
28.0	32.6	31.2			31.9	31.1			29.0	31.1			26.9	30.7			24.5	26.4		
30.0	29.5	28.5			29.4	28.5			28.8	28.6			26.8	28.2			24.4	26.1		
32.0	26.7	26.4	23.1/32.4		26.8	26.4			26.8	26.4			26.7	26.1			24.3	25.9		
34.0	24.2	24.5	21.7		24.4	24.4	21.5		24.5	24.4	20.2/35.5		24.5	24.2			24.2	24.0		
36.0	21.9	22.8	20.2		22.2	22.8	20.0		22.5	22.8	19.8		22.5	22.5	19.0/37.0		22.6	22.3		
38.0	19.5	21.3	18.9		20.2	21.4	18.7		20.6	21.4	18.5		20.7	21.0	18.4		20.8	20.8	17.9/38.5	
40.0	18.4/33.9	20.1	17.7		18.2	20.0	17.5		18.8	20.0	17.3		19.0	19.7	17.2		19.2	19.5	17.0	
42.0		19.3/41.3	16.6		16.3/41.9	18.7	16.5		17.1	18.8	16.2		17.5	18.5	16.1		17.7	18.4	15.9	
44.0			15.7	13.0/45.1		16.9	15.5		15.4	17.7	15.3		16.0	18.0	15.2		16.3	17.3	15.0	
46.0			14.8	12.6		16.6/44.3	14.6	12.3/47.0	14.7/44.8	16.0	14.4		14.5	16.5	14.3		15.0	16.3	14.1	
48.0			14.0	12.0			13.8	12.0		14.9/47.2	13.6	11.4/49.0	13.1/47.8	15.1	13.5		13.7	15.5	13.3	
50.0			13.6/49.2	11.3			13.1	11.3			12.9	11.1		13.5	12.8	10.7/51.0	12.4	14.2	12.6	
52.0				10.7			12.5	10.8			12.3	10.5		13.3/50.2	12.1	10.4	11.9/50.7	12.9	12.0	10.0/52.9
54.0				10.2			12.4/52.1	10.2			11.7	10.0			11.5	9.9		12.1/53.1	11.4	9.7
56.0				9.7				9.7			11.3/55.1	9.5		11.0	9.4				10.8	9.2
58.0				9.6/56.6				9.2				9.0			10.5	8.9			10.3	8.7
60.0								8.9/59.6				8.6				8.5			9.8	8.3
62.0												8.2				8.1			9.6/60.9	7.9
64.0												8.1/62.5				7.7				7.5
66.0																7.5/65.5				7.2
68.0																				6.9
70.0																				6.9/68.4

(EC404036)

## ■ w/45.70m Tower

Jib length (m)	51.80				54.85				57.90				60.95			
Tower angle (°)	88	85	75	65	88	85	75	65	88	85	75	65	88	85	75	65
Working radius (m)																
18.0	22.8/19.1															
20.0	22.8				21.0				19.3/20.9				17.8/21.8			
22.0	22.7				20.9				19.2				17.8			
24.0	22.6	25.9/24.1			20.8	23.2/25.1			19.1				17.7			
26.0	22.5	25.6			20.7	23.1			19.0	20.4/26.1			17.6	17.9/27.2		
28.0	22.4	25.3			20.6	22.9			18.9	20.3			17.5	17.9		
30.0	22.3	25.0			20.5	22.7			18.8	20.2			17.4	17.8		
32.0	22.2	24.7			20.4	22.5			18.7	20.1			17.3	17.7		
34.0	22.1	23.8			20.3	22.3			18.6	20.0			17.2	17.6		
36.0	22.0	22.1			20.2	22.1			18.5	19.9			17.1	17.5		
38.0	21.0	20.8			20.1	20.8			18.4	19.8			17.0	17.4		
40.0	19.5	19.4	16.7/40.1		19.4	19.4	15.8/41.6		18.3	19.3			16.9	17.3		
42.0	18.0	18.3	15.7		18.0	18.3	15.6		18.0	18.1	14.9/43.1		16.8	17.2		
44.0	16.7	17.2	14.8		16.7	17.2	14.7		16.8	17.1	14.5		16.6	16.8	14.1/44.6	
46.0	15.5	16.2	13.9		15.5	16.2	13.8		15.6	16.1	13.6		15.6	15.8	13.5	
48.0	14.3	15.3	13.2		14.4	15.3	13.0		14.5	15.2	12.8		14.6	15.0	12.7	
50.0	13.1	14.5	12.4		13.3	14.6	12.3		13.5	14.4	12.1		13.6	14.2	12.0	
52.0	12.0	13.6	11.8		12.3	13.8	11.7		12.5	13.7	11.5		12.7	13.4	11.3	
54.0	11.0/53.7	12.5	11.2	9.3/54.9	11.3	12.7	11.1		11.6	12.9	10.9		11.8	12.8	10.7	
56.0		11.2	10.6	9.0	10.2	11.7	10.5	8.7/56.8	10.7	12.0	10.3		10.9	12.1	10.2	
58.0		11.1/56.1	10.1	8.6	9.8/56.6	10.7	10.0	8.4	9.8	11.1	9.8	8.1/58.8	10.1	11.3	9.7	
60.0			9.6	8.1		10.2/59.0	9.5	8.0	9.0/59.6	10.2	9.3	7.8	9.3	10.5	9.2	7.6/60.7
62.0			9.2	7.7			9.1	7.6		9.2/61.5	8.9	7.4	8.4	9.7	8.8	7.3
64.0			8.8/63.9	7.4			8.7	7.3			8.5	7.1	8.1/62.5	8.8	8.3	6.9
66.0				7.0			8.3	6.9			8.1	6.7		8.3/64.9	8.0	6.6
68.0				6.7			8.1/66.8	6.6			7.7	6.4			7.6	6.3
70.0				6.4				6.3			7.4/69.8	6.1			7.3	6.0
72.0				6.2/71.3				6.0				5.8			7.0	5.7
74.0								5.7				5.6			6.9/72.7	5.4
76.0								5.6/74.3				5.3				5.2
78.0												5.1/77.2				4.9
80.0																4.7
82.0																4.6/80.2

(EC404036)

## ■ w/48.75m Tower

Jib length (m)	21.35				24.40				27.45				30.50				33.50				
Tower angle (°)	88	85	75	65	88	85	75	65	88	85	75	65	88	85	75	65	88	85	75	65	
Working radius (m)																					
10.0	54.0/10.3																				
11.0	54.0				53.8/11.2																
12.0	53.8				53.7				47.5/12.1												
13.0	53.6	53.0/13.9			53.5				47.0				42.8					38.6/13.9			
14.0	53.4	53.0			53.3	52.6/14.9			46.5				42.4					38.5			
15.0	51.0	52.8			53.1	52.6			46.0				42.0					38.2			
16.0	46.2	52.6			52.9	52.4			45.5	40.5			41.6	40.2/17.0				37.9			
18.0	40.9	49.2			45.1	52.2			45.0	40.3			41.2	40.0				37.6	39.8/18.1		
20.0	34.3	40.8			40.8	47.7			44.3	39.8			40.8	39.6				37.3	39.4		
22.0	28.8	36.5			35.0	40.5			40.8	39.6			40.4	39.1				37.0	38.9		
24.0	25.1	30.8	31.0/26.6		30.1	37.0			35.7	38.2			39.7	37.7				36.5	37.7		
26.0	24.1/24.3	25.5	30.4		25.5	31.9	28.7/27.1		31.2	34.6			36.0	34.2				35.9	34.2		
28.0		24.5/26.9	27.8		23.8/27.3	27.3	27.6		27.1	31.6	26.7/28.6		32.8	31.2				32.9	31.1		
30.0			25.5			24.6/29.8	25.3		24.5	29.1	25.2		29.2	28.7	25.0/30.2			29.6	28.7	23.3/31.7	
32.0			23.5				23.4		24.0/30.2	26.3	23.2		25.8	26.5	23.3			26.6	26.4	23.1	
34.0			21.8				21.7			24.7/32.8	21.6		23.7/33.2	24.6	21.6			23.8	24.5	21.4	
36.0			20.9/35.2	17.3/36.6			20.2				20.1			23.2/35.7	20.1			20.9	22.8	19.9	
38.0				16.5			18.9	16.1/38.5			18.8			18.8				20.7/36.1	21.4	18.6	
40.0				15.5			18.7/38.2	15.3			17.6	14.9/40.5		17.6				20.9/38.7	17.4		
42.0				14.6				14.4			17.0/41.1	14.3		16.6	13.9/42.4					16.4	
44.0					14.0/43.2			13.5				13.4		15.6	13.2					15.4	12.8/44.4
46.0								12.8				12.7		15.5/44.1	12.5					14.6	12.2
48.0								12.7/46.1				12.0			11.8					14.2/47.0	11.5
50.0												11.6/49.1			11.2						10.9
52.0															10.6						10.4
54.0																					9.9
56.0																					9.4/55.0

(EC404036)



■ w/48.75m Tower

Jib length (m)	36.55				39.60				42.65				45.70				48.75				
Tower angle (°)	88	85	75	65	88	85	75	65	88	85	75	65	88	85	75	65	88	85	75	65	
Working radius (m)																					
14.0	34.8/14.8																				
15.0	34.8				31.7/15.6																
16.0	34.5				31.6				28.8/16.5												
18.0	34.2	39.2/19.1			31.3				28.7					26.2					24.0/18.3		
20.0	33.9	39.0			31.0	38.9/20.2			28.4	35.1/21.2				26.0					23.9		
22.0	33.6	38.6			30.7	38.4			28.1	34.9				25.8	27.0/22.2				23.7	26.0/23.3	
24.0	33.3	37.5			30.4	37.3			27.8	34.4				25.6	26.8				23.5	25.9	
26.0	33.0	34.0			30.1	33.8			27.5	33.9				25.4	26.2				23.2	25.7	
28.0	32.7	31.1			29.7	30.8			27.2	30.9				25.2	25.8				23.0	25.4	
30.0	29.6	28.5			29.4	28.3			26.9	28.4				25.0	25.5				22.8	25.2	
32.0	26.8	26.4	21.9/33.2		26.9	26.2			26.6	26.2				24.8	24.9				22.6	24.5	
34.0	24.3	24.5	21.3		24.5	24.3	20.5/34.7		24.6	24.3				24.6	24.0				22.4	23.8	
36.0	21.9	22.8	19.8		22.3	22.7	19.6		22.5	22.7	19.1/36.3			22.6	22.3	18.0/37.8			22.2	22.1	
38.0	19.6	21.3	18.5		20.3	21.2	18.3		20.6	21.2	18.1			20.7	20.8	17.9			20.9	20.7	17.0/39.3
40.0	18.3/39.1	20.0	17.3		18.3	18.9	17.1		18.9	18.9	16.9			19.1	19.5	16.8			19.2	19.4	16.6
42.0		19.0/41.6	16.3		16.2	18.7	16.1		17.2	18.7	15.8			17.5	18.4	15.7			17.8	18.2	15.5
44.0			15.3			17.1	15.1		15.4	17.7	14.9			16.0	17.3	14.8			16.4	17.1	14.6
46.0			14.5	12.2/46.4		16.7/44.5	14.3		14.6/44.8	16.2	14.1			14.6	16.3	13.9			15.1	16.2	13.8
48.0			13.7	11.6			13.5	11.4/48.3		15.0/47.5	13.3			13.2/47.9	15.2	13.2			13.8	15.3	13.0
50.0			13.0	11.0			12.8	10.8			12.6	10.5/50.3			13.7	12.5			12.4	14.4	12.3
52.0				10.5			12.2	10.3			11.9	10.0			13.4/50.4	11.8	9.9/52.2		11.8/50.6	13.1	11.6
54.0				9.9			11.9/52.9	9.8			11.4	9.5				11.2	9.4		12.2/53.4	11.1	9.2/54.2
56.0				9.5				9.3			10.9/55.8	9.1				10.7	8.9			10.5	8.7
58.0				9.0/57.9				8.8				8.6				10.2	8.5			10.0	8.3
60.0								8.4				8.2			10.0/58.8	8.1				9.5	7.9
62.0								8.2/60.9				7.8					7.7			9.2/61.7	7.5
64.0												7.5/63.8					7.3				7.1
66.0																	7.0				6.8
68.0																	6.9/66.7				6.5
70.0																					6.2/69.7

(EC404036)

■ w/48.75m Tower

Jib length (m)	51.80				54.85				57.90				60.95			
Tower angle (°)	88	85	75	65	88	85	75	65	88	85	75	65	88	85	75	65
Working radius (m)																
18.0	22.0/19.2															
20.0	21.9				20.3/20.1				18.7/21.0				17.3/21.9			
22.0	21.8				20.2				18.6				17.2			
24.0	21.7	25.8/24.3			20.1	22.5/25.4			18.5				17.1			
26.0	21.6	25.7			20.0	22.5			18.4	19.8/26.4			17.0	17.4/27.5		
28.0	21.5	25.5			19.9	22.3			18.3	19.8			16.9	17.4		
30.0	21.4	25.3			19.8	22.1			18.2	19.7			16.8	17.3		
32.0	21.3	25.1			19.7	21.9			18.1	19.6			16.7	17.2		
34.0	21.2	24.0			19.6	21.7			18.0	19.5			16.6	17.1		
36.0	21.1	22.3			19.5	21.5			17.9	19.4			16.5	17.0		
38.0	21.0	20.9			19.4	21.0			17.8	19.3			16.4	16.9		
40.0	19.5	19.6	16.0/40.8		19.3	19.6			17.7	19.2			16.3	16.8		
42.0	18.1	18.4	15.4		18.1	18.4	15.0/42.4		17.6	18.3	14.1/43.9		16.2	16.7		
44.0	16.7	17.3	14.4		16.8	17.4	14.3		16.8	17.3	14.1		16.1	16.6	13.4/45.4	
46.0	15.5	16.4	13.6		15.6	16.4	13.4		15.6	16.3	13.3		15.7	15.9	13.1	
48.0	14.3	15.5	12.8		14.4	15.5	12.7		14.5	15.5	12.5		14.6	15.0	12.4	
50.0	13.2	14.6	12.1		13.4	14.7	12.0		13.5	14.7	11.8		13.6	14.2	11.7	
52.0	12.0	13.7	11.5		12.3	13.9	11.3		12.6	13.8	11.1		12.7	13.5	11.0	
54.0	10.9/53.8	12.6	10.9		11.3	12.8	10.7		11.6	13.0	10.6		11.8	12.8	10.4	
56.0		11.4	10.3	8.5/56.2	10.3	11.8	10.2		10.7	12.1	10.0		11.0	12.1	9.9	
58.0		10.8/56.9	9.8	8.1	9.9/56.7	10.6	9.7	8.0/58.1	9.8	11.2	9.5		10.1	11.4	9.4	
60.0			9.4	7.7		10.1/59.3	9.2	7.6	9.0/59.7	10.3	9.0	7.4/60.1	9.3	10.6	8.9	
62.0			8.9	7.3			8.8	7.2		9.3	8.6	7.0	8.4	9.7	8.5	6.9
64.0			8.5	7.0			8.4	6.8		9.2/62.2	8.2	6.7	8.1/62.6	8.9	8.1	6.5
66.0			8.4/64.7	6.6			8.0	6.5			7.8	6.3		8.4/65.2	7.7	6.2
68.0				6.3			7.7/67.6	6.2			7.5	6.0			7.4	5.9
70.0				6.0				5.9			7.2	5.7			7.0	5.6
72.0				5.8				5.6			7.1/70.6	5.5			6.7	5.3
74.0					5.7/72.6			5.4				5.2			6.5/73.5	5.1
76.0								5.2/75.2				4.9				4.8
78.0												4.7				4.6
80.0													4.6/78.5			4.4
82.0																4.2/81.5

(EC404036)

■ w/51.80m Tower

Jib length (m)	21.35				24.40				27.45				30.50				33.50			
Tower angle (°)	88	85	75	65	88	85	75	65	88	85	75	65	88	85	75	65	88	85	75	65
Working radius (m)																				
10.0	54.0/10.4																			
11.0	54.0				53.9/11.3															
12.0	53.8				53.8			44.6/12.2												
13.0	53.6				53.6			44.2					40.4/13.1							
14.0	53.4	53.1/14.2			53.4			43.7					40.3						36.6	
15.0	51.6	53.0			53.2	52.9/15.2		43.2					40.2						36.5	
16.0	46.7	52.8			53.0	52.5		42.7	50.0/16.3				40.1	40.5/17.3				36.4		
18.0	41.3	50.5			45.5	50.8		42.2	49.0				39.9	40.5				36.3	39.6/18.3	
20.0	34.7	41.8			41.2	48.1		41.7	47.3				39.7	39.7				36.2	39.3	
22.0	29.1	37.3			35.3	41.4		41.1	42.0				39.5	39.0				36.1	38.9	
24.0	25.4	31.5			30.3	37.8		35.9	37.7				39.3	37.5				36.0	37.5	
26.0	24.2/24.4	26.2	29.4/26.4		25.8	32.5	27.3/27.9		31.4	34.2			36.0	34.0				35.9	33.9	
28.0		24.8/27.1	27.4		23.9/27.4	27.9	27.3		27.3	31.2	25.6/29.4		32.9	31.1				32.8	31.0	
30.0			25.1			24.8	25.0		24.7	28.7	25.0		29.4	28.6	23.9/31.0			29.7	28.5	
32.0			23.2			24.9/30.1	23.1		24.0/30.3	25.2	23.0		25.9	26.4	23.0			26.7	26.3	22.3/32.5
34.0			21.5				21.3			24.6/33.0	21.4		23.6/33.3	24.5	21.3			23.9	24.4	21.0
36.0			20.0	16.1/37.9			19.9				19.9			22.8	19.8			21.0	22.7	19.6
38.0				16.1			18.6	14.9/39.8			18.6				18.5			20.7/36.2	21.3	18.3
40.0				15.0			18.0/39.0	14.9			17.4	13.9/41.8			17.4			20.7/38.9	17.1	
42.0				14.2				14.0			16.4/41.9	13.8			16.3	13.2/43.7			16.1	
44.0				13.3				13.1				13.0			15.4	13.0			15.2	12.2/45.7
46.0				13.1/44.5				12.4				12.3			15.0/44.9	12.3			14.3	12.1
48.0								11.9/47.4				11.6				11.6			13.6/47.8	11.4
50.0												11.1				11.0				10.8
52.0												10.9/50.4				10.4				10.2
54.0																10.0/53.3				9.7
56.0																				9.2
58.0																				9.1/56.3

(EC404036)

■ w/51.80m Tower

Jib length (m)	36.55				39.60				42.65				45.70				48.75						
Tower angle (°)	88	85	75	65	88	85	75	65	88	85	75	65	88	85	75	65	88	85	75	65			
Working radius (m)																							
14.0	33.2/14.9																						
15.0	33.2				30.2/15.8																		
16.0	33.1				30.2				27.5/16.6								25.2/17.5						
18.0	33.0	39.1/19.4			30.1				27.4								25.2		23.1/18.4				
20.0	32.9	39.0			30.0	36.1/20.4			27.3	32.3/21.5							25.1		23.0				
22.0	32.8	38.4			29.9	35.7			27.2	32.2							25.0	26.4/22.5	22.9	26.2/23.5			
24.0	32.7	37.3			29.8	35.2			27.1	31.7							24.9	26.2	22.8	26.1			
26.0	32.6	33.8			29.7	33.6			27.0	31.4							24.8	25.8	22.7	25.7			
28.0	32.5	30.8			29.6	30.6			26.9	30.8							24.7	25.5	22.6	25.4			
30.0	29.7	28.3			29.5	28.1			26.8	28.2							24.6	25.2	22.5	25.1			
32.0	26.9	26.1			27.0	25.9			26.7	26.1							24.5	24.9	22.4	24.8			
34.0	24.4	24.3	20.9		24.6	24.0	19.6/35.5		24.7	24.2							24.3	23.8	22.3	24.0			
36.0	22.0	22.6	19.5		22.4	22.3	19.3		22.6	22.5	18.3/37.1						22.6	22.1	22.2	22.3			
38.0	19.7	21.1	18.2		20.3	20.9	18.0		20.7	21.0	17.7						20.8	20.7	17.3/38.6	20.9	20.9		
40.0	18.3/39.2	19.8	17.0		18.4	19.6	16.8		18.9	19.7	16.6						19.1	19.4	16.5	19.3	19.6	16.2/40.1	
42.0		18.7/41.9	16.0		16.3	18.4	15.8		17.2	18.5	15.6						17.6	18.2	15.4	17.8	18.4	15.3	
44.0			15.1		16.1/42.1	17.4	14.9		15.5	17.5	14.6						16.1	17.2	14.5	16.4	17.3	14.3	
46.0			14.2	11.4/47.6		17.0/44.8	14.0		14.6/45.0	16.4	13.8						14.6	16.2	13.7	15.1	16.3	13.5	
48.0			13.5	11.3			13.3	10.5/49.6		15.4/47.8	13.0						13.0	15.3	12.9	13.8	15.4	12.7	
50.0			12.8	10.7			12.6	10.5			12.4	9.8/51.6					13.9	12.2		12.5	14.5	12.0	
52.0			12.5/50.7	10.1			11.9	9.9			11.7	9.7					13.4/50.7	11.6	9.2/53.5	11.9/50.9	13.2	11.4	
54.0				9.6			11.4/53.7	9.4			11.1	9.2						11.0	9.1		12.1/53.5	10.8	8.5/55.5
56.0				9.1				8.9			10.6	8.7						10.5	8.6			10.3	8.4
58.0				8.7				8.5			10.4/56.6	8.3						10.0	8.1			9.8	8.0
60.0				8.4/59.2				8.1				7.9						9.6/59.6	7.8			9.3	7.6
62.0								7.7				7.5							7.4			8.9	7.2
64.0								7.6/62.1				7.2							7.0			8.8/62.5	6.8
66.0												6.9/65.1							6.7				6.5
68.0																			6.4				6.2
70.0																							5.9
72.0																							5.8/71.0

(EC404036)

## ■ w/51.80m Tower

Jib length (m) Tower angle (°) Working radius (m)	51.80				54.85				57.90				60.95			
	88	85	75	65	88	85	75	65	88	85	75	65	88	85	75	65
18.0	21.3/19.3															
20.0	21.3				19.8/20.2				18.1/21.1							
22.0	21.2				19.5				18.1				16.8			
24.0	21.1	24.1/24.6			19.4	21.4/25.6			18.0				16.7			
26.0	21.0	24.0			19.3	21.4			17.9	19.3/26.7			16.6	17.0/27.7		
28.0	20.9	23.7			19.2	21.2			17.8	19.2			16.5	17.0		
30.0	20.8	23.5			19.1	21.0			17.7	19.0			16.4	17.0		
32.0	20.7	23.3			19.0	20.8			17.6	18.8			16.3	17.0		
34.0	20.6	23.1			18.9	20.6			17.5	18.8			16.2	16.9		
36.0	20.5	22.2			18.8	20.4			17.4	18.8			16.1	16.9		
38.0	20.4	20.7			18.7	20.2			17.3	18.8			16.0	16.9		
40.0	19.6	19.4	15.3/41.6		18.5	19.5			17.2	18.6			15.9	16.8		
42.0	18.1	18.2	15.1		18.1	18.4	14.4/43.2		17.1	18.2			15.8	16.8		
44.0	16.8	17.1	14.1		16.8	17.3	14.0		16.9	17.2	13.5/44.7		15.7	16.7		
46.0	15.5	16.1	13.3		15.6	16.3	13.2		15.7	16.2	13.0		15.6	15.8	12.8/46.2	
48.0	14.4	15.3	12.6		14.5	15.5	12.4		14.6	15.3	12.2		14.6	14.9	12.1	
50.0	13.2	14.4	11.9		13.4	14.6	11.7		13.6	14.5	11.5		13.6	14.1	11.4	
52.0	12.1	13.8	11.2		12.4	13.9	11.1		12.6	13.7	10.9		12.7	13.3	10.8	
54.0	11.0/53.9	12.7	10.6		11.4	13.0	10.5		11.7	13.1	10.3		11.8	12.7	10.2	
56.0		11.5	10.1	7.9/57.4	10.3	11.9	10.0		10.7	12.2	9.8		11.0	12.0	9.7	
58.0		11.1/56.6	9.6	7.8	9.8/56.8	10.9	9.5	7.4/59.4	9.8	11.3	9.3		10.2	11.5	9.2	
60.0			9.1	7.4		10.1/59.5	9.0	7.3	8.9/59.8	10.4	8.8	6.8/61.4	9.3	10.6	8.7	
62.0			8.7	7.0			8.6	6.9		9.4	8.4	6.7	8.5	9.8	8.3	6.3/63.3
64.0			8.3	6.7			8.2	6.5		9.1/62.5	8.0	6.3	8.2/62.7	9.0	7.9	6.2
66.0			8.1/65.5	6.3			7.8	6.2			7.6	6.0		8.4/65.4	7.5	5.9
68.0				6.0			7.5	5.9			7.3	5.7			7.2	5.6
70.0				5.7			7.4/66.4	5.6			7.0	5.4			6.8	5.3
72.0				5.5				5.4			6.8/71.4	5.2			6.5	5.1
74.0				5.2/73.9				5.1				4.9			6.3	4.8
76.0								4.9				4.7			6.2/74.3	4.6
78.0								4.8/76.9				4.5				4.3
80.0												4.3/79.8				4.1
82.0																4.0
84.0																3.9/82.7

(EC404036)

## ■ w/54.85m Tower

Jib length (m) Tower angle (°) Working radius (m)	24.40				27.45				30.50				33.50				36.55					
	88	85	75	65	88	85	75	65	88	85	75	65	88	85	75	65	88	85	75	65		
11.0	47.3/11.4																					
12.0	47.2				40.5/12.3																	
13.0	47.0				40.4				38.0/13.2													
14.0	46.8				40.3				37.9				34.4/14.1									
15.0	46.6	51.4/15.5			40.2				37.8				34.2							31.5		
16.0	46.4	51.0			40.1	40.3/16.5			37.7	39.9/17.6			34.0							31.3		
18.0	42.5	50.2			40.0	40.4			37.6	39.8			33.8	39.9/18.6					31.1	36.5/19.6		
20.0	39.9	47.3			39.9	40.1			37.5	39.6			33.6	39.5					30.9	36.4		
22.0	35.6	42.0			39.8	39.5			37.4	38.9			33.4	38.8					30.7	35.7		
24.0	30.6	37.7			36.2	37.8			37.3	37.4			33.2	37.4					30.5	35.2		
26.0	26.0	33.2			31.6	34.3			36.0	33.9			33.0	33.8					30.3	33.7		
28.0	23.9/27.5	28.5	26.0/28.7		27.5	31.3			32.2	31.0			32.6	30.9					30.1	30.7		
30.0		25.5	24.7		25.0	28.8	24.3/30.2		28.4	28.5	22.7/31.7		29.9	28.4					29.9	28.2		
32.0		24.0/30.4	22.8		24.0/30.4	25.7	22.6		26.1	26.3	22.4		26.9	26.2	21.2/33.3				27.1	26.0		
34.0			21.1			23.6/33.3	21.0		24.4/33.4	24.4	20.8		24.1	24.3	20.6				24.6	24.2	19.8/34.8	
36.0			19.7				19.5			22.7	19.4		21.2	22.7	19.1				22.2	22.5	19.0	
38.0			18.4				18.3			22.6/32.2	18.1		20.7/36.3	21.2	17.9				19.8	21.1	17.7	
40.0			17.3/39.8	13.7/41.1			17.1				17.0			20.4/39.2	16.7				18.2/39.3	19.7	16.6	
42.0				13.3			16.1	12.7/43.1			15.9				15.7					18.6	15.6	
44.0				12.5				15.8/42.7	12.4		15.0	12.1/45.0			14.8					18.5/42.1	14.7	
46.0				11.8					11.7		14.3/45.6	11.7			14.0	11.2/47.0					13.9	
48.0				11.2					11.0			11.1			13.2	10.8					13.1	10.4/48.9
50.0				10.9/48.7					10.5			10.5			13.0/48.6	10.3					12.4	10.1
52.0										10.0/51.7					9.7						11.9/51.5	9.6
54.0														9.4								9.1
56.0													9.3/54.6									8.7
58.0																						8.2
60.0																						7.8
62.0																						7.7/60.5

(EC404036)

### ■ w/54.85m Tower

Jib length (m)	39.60				42.65				45.70				48.75				51.80				
Tower angle (°)	88	85	75	65	88	85	75	65	88	85	75	65	88	85	75	65	88	85	75	65	
Working radius (m)	88	85	75	65	88	85	75	65	88	85	75	65	88	85	75	65	88	85	75	65	
15.0	28.8/15.9																				
16.0	28.8				26.4/16.8				24.2/17.6												
18.0	28.6				26.3				24.2				22.3/18.5				20.5/19.4				
20.0	28.4	33.1/20.7			26.1	26.9/21.7			24.0				22.2				20.5				
22.0	28.2	32.8			25.9	26.8			23.8	26.5/22.8			22.1	24.3/23.8			20.4				
24.0	28.0	32.2			25.7	26.5			23.6	26.4			22.0	24.3			20.3	22.4/24.9			
26.0	27.8	31.9			25.5	26.2			23.4	26.1			21.9	23.9			20.2	22.3			
28.0	27.6	30.8			25.3	25.9			23.2	25.8			21.8	23.6			20.1	22.0			
30.0	27.4	28.3			25.1	25.6			23.0	25.5			21.7	23.3			20.0	21.8			
32.0	27.1	26.2			24.9	25.0			22.8	24.9			21.6	23.0			19.9	21.6			
34.0	24.7	24.3			24.7	24.4			22.6	24.0			21.5	22.7			19.8	21.4			
36.0	22.5	22.6	18.6/36.3		22.7	22.8	17.4/37.8		22.4	22.4			21.4	22.3			19.7	21.2			
38.0	20.5	21.1	17.5		20.8	21.3	17.3		20.9	21.0	16.4/39.4		21.0	20.8			19.6	20.6			
40.0	18.5	19.8	16.4		19.0	20.0	16.2		19.2	19.7	16.0		19.4	19.5	15.4/40.9		19.5	19.3			
42.0	16.4	18.6	15.4		17.3	18.8	15.2		17.7	18.5	15.0		17.9	18.3	14.8		18.2	18.1	14.5/42.4		
44.0	16.1/42.2	17.6	14.5		15.6	17.8	14.3		16.2	17.4	14.1		16.5	17.3	13.9		16.9	17.1	13.8		
46.0		17.0/45.1	13.7		14.5/45.2	16.7	13.4		14.7	16.5	13.3		15.2	16.3	13.1		15.6	16.1	12.9		
48.0			12.9			14.9	12.7		13.1	15.5	12.6		13.9	15.4	12.4		14.4	15.2	12.2		
50.0			12.2	9.7/50.9			12.0		13.0/48.1	14.1	11.9		12.6	14.6	11.7		13.3	14.4	11.5		
52.0			11.6	9.4			11.4	9.1/52.9		13.4/51.0	11.3		11.9/51.0	13.4	11.1		12.1	13.6	10.9		
54.0			11.1	8.9			10.8	8.6			10.7	8.4/54.8		12.2/53.9	10.5		10.8	12.9	10.3		
56.0			10.9/54.5	8.5			10.3	8.2			10.2	8.1		10.0	7.7/56.8				11.7	9.8	
58.0				8.0			9.9/57.4	7.8			9.7	7.7			9.5	7.5		11.1/58.9	9.3	7.2/58.7	
60.0				7.6				7.4			9.2	7.3			9.1	7.1			8.9	6.9	
62.0				7.3				7.1		9.1/60.4	6.9				8.6	6.7			8.4	6.6	
64.0				7.0/63.4				6.7			6.6				8.4/63.3	6.4			8.1	6.2	
66.0								6.4			6.3					6.1			7.7	5.9	
68.0								6.3/66.4				6.0				5.8			7.6/66.3	5.6	
70.0												5.8/69.3				5.5				5.4	
72.0																5.3				5.1	
74.0																5.2/72.3				4.9	
76.0																					4.7/75.2

(EC404036)

### ■ w/54.85m Tower

Jib length (m)	54.85				57.90				60.95			
Tower angle (°)	88	85	75	65	88	85	75	65	88	85	75	65
Working radius (m)	88	85	75	65	88	85	75	65	88	85	75	65
20.0	19.0/20.3				17.6/21.2							
22.0	18.9				17.6				16.3/22.1			
24.0	18.8	20.0/25.9			17.5				16.2			
26.0	18.7	20.0			17.4	18.1/26.9			16.1			
28.0	18.6	19.7			17.3	18.0			16.0	16.3		
30.0	18.5	19.5			17.2	17.8			15.9	16.1		
32.0	18.4	19.3			17.1	17.6			15.8	16.0		
34.0	18.3	19.1			17.0	17.5			15.7	15.9		
36.0	18.2	18.8			16.9	17.4			15.6	15.8		
38.0	18.1	18.7			16.8	17.3			15.5	15.7		
40.0	18.0	18.6			16.7	17.2			15.4	15.6		
42.0	17.9	18.2	13.7/43.9		16.6	17.1			15.3	15.5		
44.0	16.9	17.2	13.6		16.5	17.0	12.8/45.5		15.2	15.4		
46.0	15.7	16.2	12.8		15.7	16.1	12.6		15.1	15.3	12.1/47.0	
48.0	14.5	15.3	12.1		14.7	15.2	11.9		15.0	14.8	11.7	
50.0	13.5	14.5	11.4		13.6	14.4	11.2		14.6	14.0	11.1	
52.0	12.4	13.8	10.8		12.7	13.7	10.6		13.7	13.3	10.4	
54.0	11.4	13.1	10.2		11.7	13.0	10.0		12.8	12.6	9.9	
56.0	10.4	12.1	9.7		10.8	12.3	9.5		11.9	12.0	9.4	
58.0	9.9/56.9	11.1	9.2		9.9	11.4	9.0		11.0	11.4	8.9	
60.0		10.1/59.8	8.7	6.7/60.7	9.0/59.9	10.5	8.5		10.2	10.8	8.4	
62.0			8.3	6.4		9.6	8.1	6.1/62.7	9.4	9.9	8.0	
64.0			7.9	6.1		9.2/62.7	7.7	5.9	9.0/62.8	9.1	7.6	5.7/64.6
66.0			7.6	5.8			7.4	5.6		8.4/65.7	7.2	5.5
68.0			7.2	5.5			7.0	5.3			6.9	5.2
70.0			7.0/69.2	5.2			6.7	5.0			6.6	4.9
72.0				5.0			6.4	4.8			6.3	4.7
74.0				4.7			6.3/72.1	4.6			6.0	4.4
76.0				4.5				4.3			5.9/75.1	4.2
78.0				4.3				4.1				4.0
80.0				4.2/78.1				3.9				3.8
82.0								3.8/81.1				3.6
84.0												3.4

(EC404036)

### ■ w/57.90m Tower

Jib length (m)	27.45				30.50				33.50				36.55				39.60			
	88	85	75	65	88	85	75	65	88	85	75	65	88	85	75	65	88	85	75	65
12.0	39.4/12.4																			
13.0	39.4				35.9/13.3															
14.0	39.3				35.9			32.8/14.2												
15.0	39.2				35.8			32.7				30.0/15.1								
16.0	39.1	39.1/16.8			35.7	38.8/17.8		32.6				29.8				27.5				
18.0	39.0	39.0			35.6	38.8		32.5	36.2/18.9			29.7	33.3/19.9			27.4				
20.0	38.9	38.8			35.5	38.6		32.4	35.9			29.6	33.3			27.3	30.2/21.0			
22.0	38.8	38.4			35.4	38.3		32.3	35.2			29.5	32.6			27.2	30.0			
24.0	36.4	37.6			35.3	37.2		32.2	34.7			29.4	32.0			27.1	29.5			
26.0	31.9	34.0			35.2	33.7		32.1	33.6			29.3	31.7			27.0	29.1			
28.0	27.7	31.0			32.9	30.7		32.0	30.7			29.2	30.5			26.9	28.8			
30.0	25.2	28.5	23.2/31.0		28.6	28.2		30.1	28.2			29.1	28.0			26.8	27.8			
32.0	24.0/30.5	26.3	22.3		26.4	26.1	21.7/32.5	27.1	26.1			27.3	25.8			26.7	25.7			
34.0		24.9/33.6	20.7		33.8/33.5	24.2	20.5	24.3	24.2	20.2/34.1		24.7	24.0	19.0/35.6		24.8	23.8			
36.0			19.3		22.5	19.1		21.4	22.6	18.8		22.3	22.3	18.7		22.6	22.2	17.8/37.1		
38.0			18.0		22.2/36.5	17.8		20.8/36.4	21.1	17.6		20.0	20.9	17.5		20.6	20.7	17.3		
40.0			16.9			16.7			20.1/39.5	16.5		18.3/39.4	19.6	16.4		18.6	19.4	16.2		
42.0			15.9			15.7				15.5			18.4	15.3		16.6	18.3	15.2		
44.0			15.2/43.5	12.1/44.3		14.8				14.6			18.2/42.4	14.5		16.3/42.3	17.3	14.3		
46.0				11.6		14.0	11.3/46.3			13.8				13.6			16.6/45.3	13.4		
48.0				10.9		13.8/46.4	10.7			13.0	10.4/48.3			12.9				12.7		
50.0				10.3			10.1			12.5/49.4	9.9			12.2	9.7/50.2			12.0		
52.0				9.8			9.6				9.4			11.6	9.3			11.4	9.0/52.2	
54.0				9.5/52.9			9.1				8.9			11.5/52.3	8.8			10.8	8.6	
56.0							8.7/55.9				8.4				8.4			10.5/55.3	8.1	
58.0											8.1				7.9				7.7	
60.0											7.9/58.8				7.6				7.4	
62.0															7.2/61.8				7.0	
64.0																			6.7	
66.0																			6.5/64.7	

(EC404036)

### ■ w/57.90m Tower

Jib length (m)	42.65				45.70				48.75				51.80				54.85			
	88	85	75	65	88	85	75	65	88	85	75	65	88	85	75	65	88	85	75	65
16.0	25.3/16.9				23.2/17.7															
18.0	25.3				23.2				21.4/18.6				19.8/19.5							
20.0	25.2				23.1				21.3				19.8				18.3/20.4			
22.0	25.1	27.0			23.0	24.8/23.0			21.2				19.7				18.2			
24.0	25.0	26.9			22.9	24.6			21.1	22.6/24.1			19.6	20.8/25.1			18.1			
26.0	24.9	26.5			22.8	24.2			21.0	22.2			19.5	20.7			18.0	18.4/26.2		
28.0	24.8	26.2			22.7	23.9			20.9	21.9			19.4	20.4			17.9	18.3		
30.0	24.7	26.0			22.6	23.6			20.8	21.6			19.3	20.2			17.8	18.1		
32.0	24.6	25.8			22.5	23.3			20.7	21.3			19.2	20.0			17.7	17.9		
34.0	24.5	23.9			22.4	23.0			20.6	21.0			19.1	19.8			17.6	17.7		
36.0	22.9	22.3			22.3	22.2			20.5	20.7			19.0	19.6			17.5	17.5		
38.0	20.9	20.8	16.7/38.6		21.0	20.8			20.4	20.4			18.9	19.4			17.4	17.3		
40.0	19.2	19.5	15.9		19.3	19.5	15.7/40.2		19.5	19.4	14.7/41.7		18.8	19.2			17.3	17.1		
42.0	17.4	18.4	14.9		17.8	18.3	14.8		18.0	18.2	14.6		18.3	18.0	13.8/43.2		17.2	16.9		
44.0	15.7	17.3	14.0		16.3	17.3	13.9		16.6	17.2	13.7		17.0	16.9	13.5		17.0	16.7	13.1/44.7	
46.0	14.5/45.3	16.3	13.2		14.8	16.3	13.1		15.3	16.2	12.9		15.7	16.0	12.7		15.7	16.1	12.6	
48.0		15.2	12.5		13.2	15.4	12.3		14.0	15.4	12.2		14.5	15.1	12.0		14.6	15.2	11.8	
50.0		15.0/48.3	11.8		13.0/48.2	14.3	11.7		12.7	14.5	11.5		13.4	14.3	11.3		13.5	14.3	11.2	
52.0			11.2			13.6/51.2	11.1		11.9/51.1	13.6	10.9		12.2	13.5	10.7		12.5	13.6	10.5	
54.0			10.6	8.3/54.1			10.5			12.2	10.3		11.0	13.0	10.1		11.5	13.0	10.0	
56.0			10.1	7.9			10.0	7.7/56.1		12.0/54.2	9.8		10.8/54.1	11.9	9.6		10.4	12.2	9.5	
58.0			9.6	7.5			9.5	7.3			9.3	7.1/58.1		11.1/57.1	9.1		9.8/57.0	11.2	9.0	
60.0			9.5/58.2	7.1			9.1	7.0			8.9	6.8			8.7	6.6		10.1	8.5	6.2/61.0
62.0				6.8			8.8/61.2	6.7			8.4	6.4			8.3	6.2		10.0/60.1	8.1	6.1
64.0				6.4				6.3			8.1	6.1			7.9	5.9			7.7	5.8
66.0				6.1				6.0			8.0/64.1	5.8			7.5	5.6			7.4	5.5
68.0				5.9/67.7				5.7				5.5			7.4/67.0	5.4			7.1	5.2
70.0								5.5				5.3				5.1			6.7	5.0
72.0								5.4/70.6				5.0				4.8				4.7
74.0												4.8/73.5				4.6				4.5
76.0																4.4				4.3
78.0																4.3/78.5				4.1
80.0																				3.9/79.4

(EC404036)

### ■ w/57.90m Tower

Jib length (m)	57.90				60.95			
	88	85	75	65	88	85	75	65
20.0	17.021.3							
22.0	17.0				15.8/22.2			
24.0	16.9				15.7			
26.0	16.8	16.7/27.2			15.6			
28.0	16.7	16.7			15.5	15.1/28.2		
30.0	16.6	16.5			15.4	15.1		
32.0	16.5	16.4			15.3	14.9		
34.0	16.4	16.3			15.2	14.8		
36.0	16.3	16.2			15.1	14.7		
38.0	16.2	16.1			15.0	14.6		
40.0	16.1	16.0			14.9	14.5		
42.0	16.0	15.9			14.8	14.4		
44.0	15.9	15.8			14.7	14.3		
46.0	15.8	15.7	12.2/46.3		14.6	14.2	11.6/47.8	
48.0	14.7	15.1	11.6		14.5	14.1	11.5	
50.0	13.7	14.3	11.0		13.8	13.9	10.8	
52.0	12.7	13.6	10.4		12.8	13.2	10.2	
54.0	11.8	12.9	9.8		11.9	12.5	9.7	
56.0	10.9	12.5	9.3		11.1	11.9	9.1	
58.0	9.9	11.6	8.8		10.3	11.3	8.7	
60.0	8.9	10.6	8.4		9.4	10.8	8.2	
62.0		9.7	7.9	5.6/63.9	8.6	10.1	7.8	
64.0		9.2/63.0	7.6	5.6	8.2/62.9	9.2	7.4	5.3/65.9
66.0			7.2	5.3		8.3	7.1	5.2
68.0			6.9	5.0			6.7	4.9
70.0			6.6	4.8			6.4	4.7
72.0			6.3	4.5			6.1	4.4
74.0			6.1/72.9	4.3			5.9	4.2
76.0				4.1			5.6/75.9	4.0
78.0				3.9				3.8
80.0				3.7				3.5
82.0				3.5				3.4
84.0				3.4/82.4				3.2
86.0								3.1/85.3

(EC404036)

### ■ w/60.95m Tower

Jib length (m)	30.50				33.50				36.55				39.60				42.65			
	88	85	75	65	88	85	75	65	88	85	75	65	88	85	75	65	88	85	75	65
13.0	33.8/33.4																			
14.0	33.9				31.1/44.9															
15.0	33.7				31.0				28.6/52											
16.0	33.5				30.9				28.6								26.1/61			24.2/70
18.0	33.3	35.0/18.1			30.8	32.7/19.1			28.5				26.0				24.1			
20.0	33.1	35.2			30.7	32.5			28.4	30.1/20.2			25.9	27.0/21.2			24.0			
22.0	32.9	34.6			30.6	31.9			28.3	29.6			25.8	27.0			23.9			24.9/22.3
24.0	32.7	34.1			30.5	31.4			28.2	29.0			25.7	26.8			23.8			24.6
26.0	32.5	33.8			30.4	31.0			28.1	28.7			25.6	26.4			23.7			24.2
28.0	32.3	30.5			30.3	30.8			28.0	28.4			25.5	26.1			23.6			23.9
30.0	30.0	28.0			30.1	27.9			27.9	27.7			25.4	25.8			23.5			23.6
32.0	26.6	25.9	20.4/33.3		27.3	25.8			27.4	25.7			25.3	25.5			23.4			23.3
34.0	23.8/33.6	24.0	19.9		24.4	23.9	19.1/34.9		24.9	23.8			25.2	23.6			23.3			23.0
36.0		22.5	18.5		21.6	22.3	18.4		22.5	22.1	17.9/36.4		22.8	22.0	16.9/37.9		23.0			22.0
38.0		21.9/36.8	17.3		20.8/36.5	20.8	17.1		20.1	20.7	17.0		20.7	20.5	16.8		21.1			19.8/38.4
40.0			16.2			19.7/39.7	16.1		19.3/39.5	19.5	15.9		18.7	19.2	15.7		19.3			15.5
42.0			15.2				15.1			18.3	14.9		16.7	18.1	14.7		17.6			14.5
44.0			14.3				14.2			17.9/42.7	14.1		16.3/42.4	17.1	13.9		15.9			13.6
46.0			13.5	10.3/47.6			13.4				13.3			16.3/45.6	13.1		14.7/45.4			12.8
48.0			13.1/47.2	10.2			12.7	9.3/49.6			12.5				12.3					12.1
50.0				9.7			12.0	9.4			11.9	8.9/51.5			11.7				15.2/48.6	11.4
52.0				9.1			11.9/50.2	8.9			11.3	8.8			11.1	8.2/53.5				10.9
54.0				8.7				8.5			10.9/53.1	8.3			10.5	8.1				10.3
56.0				8.2				8.0				7.9			10.0	7.7				9.8
58.0				8.0/57.2				7.6				7.5			9.9/56.1	7.3				9.3
60.0								7.2				7.1				6.9				8.1/58.0
62.0									7.1/60.1			6.8				6.6				6.4
64.0													6.6/63.1			6.3				6.0
66.0																6.0				5.8
68.0																				5.5
70.0																				5.2/68.9

(EC404036)

## ■ w/60.95m Tower

Jib length (m)	45.70				48.75				51.80				54.85				57.90			
(Tower angle (°)) Working radius (m)	88	85	75	65	88	85	75	65	88	85	75	65	88	85	75	65	88	85	75	65
16.0	22.3/17.9																			
18.0	22.3				20.6/18.7				20.1/19.6											
20.0	22.2				20.5				19.6				17.7/20.5				16.5/21.4			
22.0	22.1	22.7/23.3			20.4				19.5				17.6				16.4			
24.0	22.0	22.6			20.3	20.6/24.3			19.4	19.2/25.4			17.5				16.3			
26.0	21.9	22.2			20.2	20.4			19.3	19.2			17.4	17.0/26.4			16.1	15.5/27.5		
28.0	21.8	21.9			20.1	20.1			19.2	19.1			17.3	16.9			15.9	15.5		
30.0	21.7	21.6			20.0	19.9			19.1	19.0			17.2	16.7			15.8	15.3		
32.0	21.6	21.3			19.9	19.7			18.9	18.9			17.1	16.5			15.7	15.1		
34.0	21.5	21.0			19.8	19.5			18.8	18.8			17.0	16.4			15.6	15.0		
36.0	21.4	20.7			19.7	19.3			18.7	18.7			16.9	16.3			15.5	14.9		
38.0	21.1	20.3			19.6	19.1			18.6	18.6			16.8	16.2			15.4	14.8		
40.0	19.4	19.0	14.9/40.9		19.5	18.9			18.5	18.5			16.7	16.1			15.3	14.7		
42.0	17.9	17.8	14.4		18.1	17.7	13.8/42.5		18.4	17.9			16.6	16.0			15.2	14.6		
44.0	16.4	16.8	13.5		16.7	16.7	13.3		17.0	16.8	13.1		16.5	15.9	12.4/45.3		15.1	14.5		
46.0	14.9	15.8	12.7		15.4	15.7	12.5		15.8	15.7	12.3		15.8	15.6	12.2		15.0	14.4	11.6/47.0	
48.0	13.3	15.0	12.0		14.1	14.9	11.8		14.6	14.9	11.6		14.7	14.8	11.5		14.8	14.3	11.3	
50.0	13.0/48.3	14.2	11.3		12.8	14.1	11.1		13.4	14.1	10.9		13.6	14.0	10.8		13.8	14.0	10.6	
52.0		13.6/51.5	10.7		11.9/51.3	13.4	10.5		12.3	13.4	10.3		12.6	13.4	10.2		12.8	13.4	10.0	
54.0			10.2			12.5	10.0		11.1	12.6	9.8		11.6	12.8	9.7		11.9	12.7	9.5	
56.0			9.7	7.0/57.4		12.3/54.4	9.5		10.9/54.2	12.1	9.3		10.5	12.2	9.1		10.9	12.1	9.0	
58.0			9.2	6.9			9.0	6.5/59.4		11.7/57.4	8.8		9.8/57.1	11.4	8.7		10.0	11.5	8.5	
60.0			8.8	6.6			8.6	6.4			8.4	5.9/61.3		10.3	8.2		9.0	10.8	8.1	
62.0			8.4/61.9	6.2			8.2	6.0			8.0	5.8		10.1/60.3	7.8	5.5/63.3	8.9/60.1	9.9	7.6	
64.0				5.9			7.8	5.7			7.6	5.5			7.5	5.4		9.3/63.3	7.3	5.0/65.2
66.0				5.6			7.6/64.9	5.4			7.2	5.2			7.1	5.1			6.9	4.9
68.0				5.3				5.1			7.0/67.8	5.0			6.8	4.8			6.6	4.6
70.0				5.1				4.9				4.7			6.5	4.6			6.3	4.4
72.0								4.7				4.5			6.4/70.8	4.4			6.0	4.1
74.0				4.8/71.9				4.4				4.3				4.1			5.8/73.7	3.9
76.0								4.3/74.8				4.0				3.9				3.7
78.0												3.8/77.8				3.7				3.5
80.0																3.5				3.3
82.0																3.4/80.7				3.2
84.0																				3.0/83.7

(EC404036)

## ■ w/60.95m Tower

Jib length (m)	60.95			
(Tower angle (°)) Working radius (m)	88	85	75	65
22.0	15.0/22.3			
24.0	14.9			
26.0	14.7			
28.0	14.5	14.1/28.5		
30.0	14.4	14.0		
32.0	14.3	13.8		
34.0	14.2	13.7		
36.0	14.1	13.6		
38.0	14.0	13.5		
40.0	13.9	13.4		
42.0	13.8	13.3		
44.0	13.7	13.2		
46.0	13.6	13.1		
48.0	13.5	13.0	11.1/48.6	
50.0	13.3	12.9	10.5	
52.0	12.9	12.8	9.9	
54.0	12.0	12.3	9.3	
56.0	11.2	11.7	8.8	
58.0	10.3	11.1	8.4	
60.0	9.5	10.6	7.9	
62.0	8.6	10.1	7.5	
64.0	8.1/63.0	9.4	7.1	
66.0		8.5	6.8	4.8/67.2
68.0		8.4/66.2	6.5	4.5
70.0			6.2	4.2
72.0			5.9	4.0
74.0			5.6	3.8
76.0			5.4	3.6
78.0			5.3/75.7	3.4
80.0				3.2
82.0				3.0
84.0				2.9
86.0				2.7
88.0				2.6/86.6

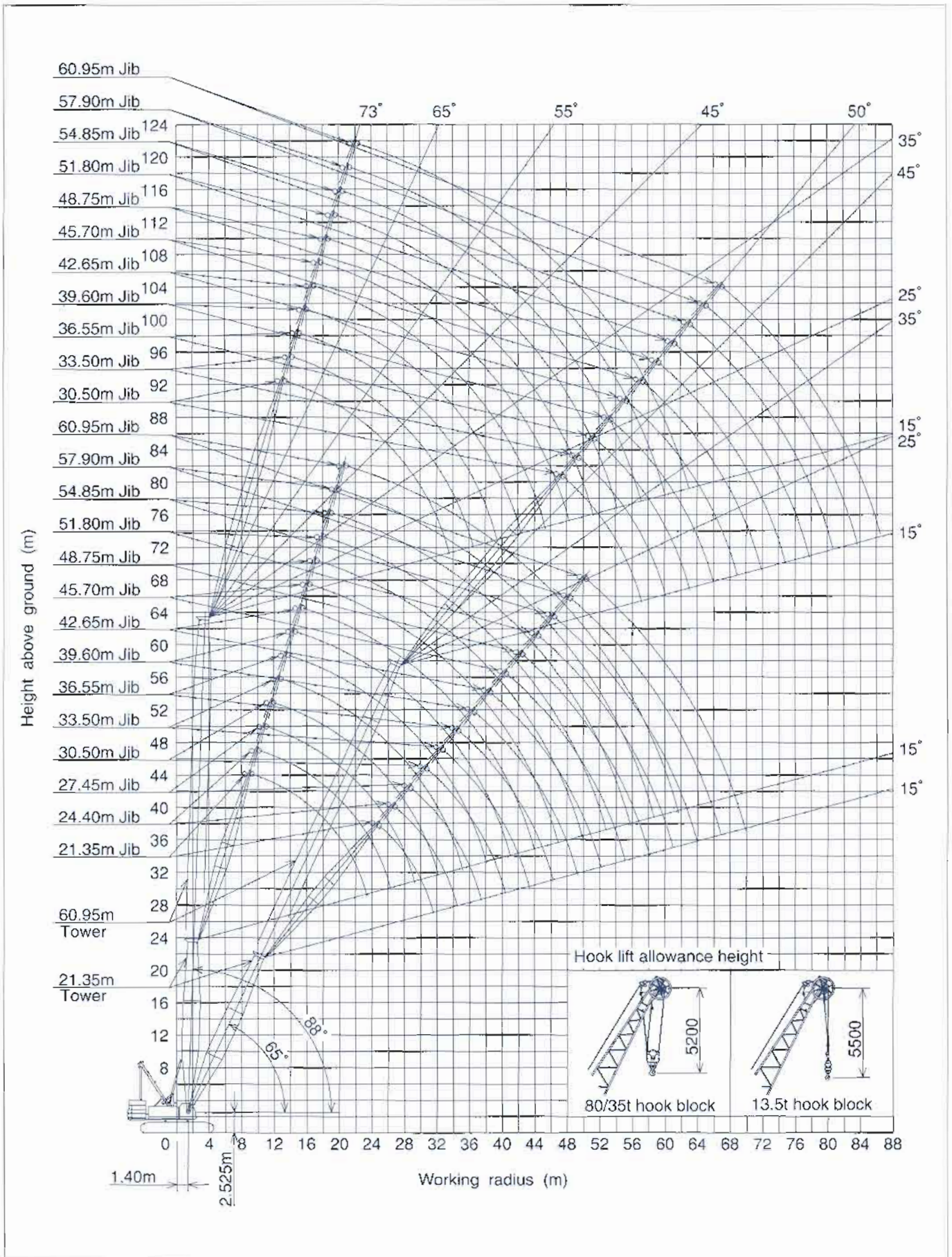
(EC404036)

**Notes — Luffing towercrane capacities**

1. Capacities included in these charts are the maximum allowable, and are based on machine standing level on firm supporting surface under ideal job conditions.
2. Capacities are in metric tons, and are rated in accordance with American SAE Standards; the figures surrounded by bold lines are based on factors other than those which would cause a tipping condition.
3. Capacities are based on freely suspended loads and make no allowance for such factors as the effect of wind, sudden stopping of loads, supporting surface conditions, and operating speeds. Operator must reduce load ratings to take such conditions into account. Deduction from rated capacities must be made for weight of hook block, weighted ball/hook, sling, spreader bar, or other suspended gear. Hook block weight is as follows,  
80t-----1.4ton    35t-----0.9ton    13.5t-----0.6ton
4. A 93.7ton counterweight and 14.0ton carbody weight are required for all capacities on these charts.
5. All capacities are rated for 360° swing.
6. Least stable rated condition is over the side.
7. Attachment must be erected and lowered over the front of the crawler mounting.
8. Working radii shown above are at loading condition.
9. The machine can be steplessly operated at tower angle between 88 and 65 degrees safely; towercrane capacities available under any tower angle are automatically set up by a computerized automatic over-load preventing system, Model SML-10.
10. The machine shall be operated in accordance with manufacturer's standard tower boom and jib combination shown in page 26 here.



# Luffing Towercrane Working Ranges



# Tower Boom & Jib Combination Table

## ■ Combination Table

Jib length (m) Tower length (m)	21.35	24.40	27.45	30.50	33.50	36.55	39.60	42.65	45.70	48.75	51.80	54.85	57.90	60.95
21.35	○	○	○	○	○	○	○	○	○	○	○	○	○	○
24.40	○	○	○	○	○	○	○	○	○	○	○	○	○	○
27.45	○	○	○	○	○	○	○	○	○	○	○	○	○	○
30.50	○	○	○	○	○	○	○	○	○	○	○	○	○	○
33.50	○	○	○	○	○	○	○	○	○	○	○	○	○	○
36.55	○	○	○	○	○	○	○	○	○	○	○	○	○	○
39.60	○	○	○	○	○	○	○	○	○	○	○	○	○	○
42.65	○	○	○	○	○	○	○	○	○	○	○	○	○	○
45.70	○	○	○	○	○	○	○	○	○	○	○	○	○	○
48.75	○	○	○	○	○	○	○	○	○	○	○	○	○	○
51.80	○	○	○	○	○	○	○	○	○	○	○	○	○	○
54.85	×	○	○	○	○	○	○	○	○	○	○	○	○	○
57.90	×	×	○	○	○	○	○	○	○	○	○	○	○	○
60.95	×	×	×	○	○	○	○	○	○	○	○	○	○	○

### Notes:

The meaning of symbols shown in the above table is as follows;

1. Symbol of "○" : Possible to luff tower between 88° thru 65°.
2. Symbol of "×" : Impossible to make tower boom and jib combination.

## ■ Tower Boom Configuration

Boom length (m)	Tower boom configuration
21.35m	
24.40m	
27.45m	
30.50m	
33.50m	
36.55m	
39.60m	
42.65m	
45.70m	
48.75m	
51.80m	
54.85m	
57.90m	
60.95m	

### Notes:

1 The meaning of figures and symbols shown above is as follows:

- : 7.62m heavy-duty bottom section
- : 7.24m heavy-duty tapered extension plus 0.38m head section
- : 9.15m tower boom extension
- : 9.15m ultra heavy-duty tower boom extension
- : 9.15m ultra heavy-duty tower boom extension w/bridle rest
- : 6.10m tower boom extension w/bridle rest
- : 3.05m tower boom extension

2 The other combination for each boom length except 21.35m shall be available. If required, please consult us or nearest distributor.

## ■ Tower Jib Configuration

Jib length (m)	Tower jib boom configuration
21.35m	
24.40m	
27.45m	
30.50m	
33.50m	
36.55m	
39.60m	
42.65m	
45.70m	
48.75m	
51.80m	
54.85m	
57.90m	
60.95m	

### Notes:

1 The meaning of figures and symbols shown above is as follows:

- : 9.15m tower jib bottom section
- : 9.15m tower jib top section
- : 9.15m tower jib extension
- : 9.15m heavy-duty tower jib extension
- : 6.10m tower jib extension
- : 3.05m tower jib extension
- ★ : Midpoint suspension cable installing position; it is required to install it when jib length is 51.80m and over.

2 The other combination for each jib length except 2 kinds of lengths of 21.35m/60.95m shall be available. If required, please consult us or nearest distributor.

# Luffing Jib Foot Crane Capacities 70 metric tons

## ■ w/21.35m Tower

Jib length (m) Working radius (m)	21.35	24.40	27.45	30.50	33.50	36.55	39.60	42.65	45.70	48.75	51.80	54.85	57.90	60.95
6.5	70.0/6.6	69.2/6.6	69.0/6.6	68.8/6.6	68.6/6.6	68.4/6.6	68.2/6.6	68.0/6.6	67.8/6.6	67.6/6.6	67.4/6.6	67.2/6.6	67.0/6.6	66.8/6.6
7.0	69.0	68.7	68.5	68.3	68.1	67.9	67.7	67.5	67.3	67.1	66.9	66.7	66.5	66.3
7.5	68.5	68.2	68.0	67.8	67.6	67.4	67.2	67.0	66.8	66.6	66.4	66.2	66.0	65.8
8.0	68.0	67.7	67.5	67.3	67.1	66.9	66.7	66.5	66.3	66.1	65.9	65.7	65.5	65.3
9.0	67.2	66.9	66.7	66.5	66.3	66.1	65.9	65.7	65.5	65.3	65.1	64.9	64.7	64.5
10.0	66.4	66.1	65.9	65.7	65.5	65.3	65.1	64.9	64.7	64.5	64.3	64.1	63.9	63.7
11.0	65.6	65.3	65.1	64.9	64.7	64.5	64.3	64.1	63.9	63.7	63.5	63.3	63.1	62.9
12.0	64.8	64.5	64.3	64.1	63.9	63.7	63.5	63.3	63.1	62.9	62.7	62.5	62.3	62.1
13.0	64.7/12.2	64.4/12.2	64.2/12.2	64.0/12.2	63.8/12.2	63.6/12.2	63.4/12.2	63.2/12.2	63.0/12.2	62.8/12.2	62.6/12.2	62.4/12.2	62.2/12.2	62.0/12.2

(EC404033)

## ■ w/24.40m Tower

Jib length (m) Working radius (m)	21.35	24.40	27.45	30.50	33.50	36.55	39.60	42.65	45.70	48.75	51.80	54.85	57.90	60.95
7.0	69.0/7.1	68.8/7.1	68.6/7.1	68.4/7.1	68.2/7.1	68.0/7.1	67.8/7.1	67.6/7.1	67.4/7.1	67.2/7.1	67.0/7.1	66.8/7.1	66.6/7.1	66.4/7.1
7.5	68.4	68.1	67.9	67.7	67.5	67.3	67.1	66.9	66.7	66.5	66.3	66.1	65.9	65.7
8.0	67.9	67.6	67.4	67.2	67.0	66.8	66.6	66.4	66.2	66.0	65.8	65.6	65.4	65.2
9.0	67.1	66.8	66.6	66.4	66.2	66.0	65.8	65.6	65.4	65.2	65.0	64.8	64.6	64.4
10.0	66.3	66.0	65.8	65.6	65.4	65.2	65.0	64.8	64.6	64.4	64.2	64.0	63.8	63.6
11.0	65.5	65.2	65.0	64.8	64.6	64.4	64.2	64.0	63.8	63.6	63.4	63.2	63.0	62.8
12.0	64.7	64.4	64.2	64.0	63.8	63.6	63.4	63.2	63.0	62.8	62.6	62.4	62.2	62.0
13.0	63.9	63.6	63.4	63.2	63.0	62.8	62.6	62.4	62.2	62.0	61.8	61.6	61.4	60.9
14.0	63.5/13.5	63.2/13.5	63.0/13.5	62.8/13.5	62.6/13.5	62.4/13.5	62.2/13.5	62.0/13.5	61.8/13.5	61.6/13.5	60.7/13.5	59.4/13.5	58.0/13.5	56.8/13.5

(EC404033)

## ■ w/27.45m Tower

Jib length (m) Working radius (m)	21.35	24.40	27.45	30.50	33.50	36.55	39.60	42.65	45.70	48.75	51.80	54.85	57.90	60.95
7.5	68.3/7.7	68.0/7.7	67.8/7.7	67.6/7.7	67.4/7.7	67.2/7.7	67.0/7.7	66.8/7.7	66.6/7.7	66.4/7.7	66.2/7.7	66.0/7.7	65.8/7.7	65.6/7.7
8.0	67.8	67.5	67.3	67.1	66.9	66.7	66.5	66.3	66.1	65.9	65.7	65.5	65.3	65.1
9.0	67.0	66.7	66.5	66.3	66.1	65.9	65.7	65.5	65.3	65.1	64.9	64.7	64.5	64.3
10.0	66.2	65.9	65.7	65.5	65.3	65.1	64.9	64.7	64.5	64.3	64.1	63.9	63.7	63.5
11.0	65.4	65.1	64.9	64.7	64.5	64.3	64.1	63.9	63.7	63.5	63.3	62.9	62.7	62.5
12.0	64.6	64.3	64.1	63.9	63.7	63.5	63.3	63.1	62.9	62.7	62.5	62.3	62.1	91.9
13.0	63.8	63.5	63.3	63.1	62.9	62.7	62.5	62.3	62.1	61.9	61.7	61.5	61.3	61.1
14.0	63.0	62.7	62.5	62.3	62.1	61.9	61.7	60.1	59.7	58.5	57.2	56.1	54.7	53.6
15.0	61.6/14.8	60.8/14.8	60.2/14.8	59.3/14.8	58.3/14.8	57.5/14.8	56.4/14.8	54.7/14.8	54.3/14.8	53.1/14.8	51.9/14.8	50.8/14.8	49.5/14.8	48.3/14.8

(EC404033)

## ■ w/30.50m Tower

Jib length (m) Working radius (m)	21.35	24.40	27.45	30.50	33.50	36.55	39.60	42.65	45.70	48.75	51.80	54.85	57.90	60.95
8.0	67.7/8.2	67.4/8.2	67.2/8.2	67.0/8.2	66.8/8.2	66.6/8.2	66.4/8.2	66.2/8.2	66.0/8.2	65.8/8.2	65.6/8.2	65.4/8.2	65.2/8.2	65.0/8.2
9.0	66.9	66.6	66.4	66.2	66.0	65.8	65.6	65.4	65.2	65.0	64.8	64.6	64.4	64.2
10.0	66.1	65.8	65.6	65.4	65.2	65.0	64.8	64.6	64.4	64.2	64.0	63.8	63.6	63.4
11.0	65.3	65.0	64.8	64.6	64.4	64.2	64.0	63.8	63.6	63.4	63.2	63.0	62.8	62.6
12.0	64.5	64.2	64.0	63.8	63.6	63.4	63.2	63.0	62.8	62.6	62.4	62.2	62.0	61.8
13.0	63.7	63.4	63.2	63.0	62.8	62.6	62.4	62.2	62.0	61.8	61.6	61.4	61.2	61.0
14.0	62.8	62.5	62.3	62.1	61.9	61.7	61.3	60.0	59.1	57.8	57.4	56.4	55.1	53.9
15.0	59.2	58.4	57.6	57.1	56.0	55.1	54.6	53.4	52.5	51.3	50.9	49.9	48.6	47.5
16.0	53.5	52.7	51.9	51.4	50.3	49.5	49.0	47.8	46.9	45.7	45.3	44.3	43.1	42.1

(EC404033)

### ■ w/33.50m Tower

Jib length (m) Working radius (m)	21.35	24.40	27.45	30.50	33.50	36.55	39.60	42.65	45.70	48.75	51.80	54.85	57.90	60.95
8.0	67.2/8.7	66.9/8.7	66.7/8.7	66.5/8.7	66.3/8.7	66.1/8.7	65.9/8.7	65.7/8.7	65.5/8.7	65.3/8.7	65.1/8.7	64.9/8.7	64.7/8.7	64.5/8.7
9.0	66.8	66.5	66.3	66.1	65.9	65.7	65.5	65.3	65.1	64.9	64.7	64.5	64.3	64.1
10.0	66.0	65.6	65.4	65.2	65.0	64.8	64.6	64.4	64.2	64.0	63.8	63.6	63.4	63.2
11.0	65.2	64.9	64.7	64.5	64.3	64.1	63.9	63.7	63.5	63.1	62.9	62.7	62.5	62.3
12.0	64.4	64.1	63.9	63.7	63.5	63.3	63.1	62.9	62.7	62.5	62.3	62.1	61.9	61.7
13.0	63.6	63.3	63.1	62.9	62.7	62.5	62.3	62.1	61.9	61.7	61.5	61.3	61.1	60.9
14.0	62.8	62.5	62.3	62.1	61.9	61.7	61.3	60.1	59.1	57.9	57.6	56.6	55.3	54.2
15.0	59.0	58.2	57.4	56.3	55.9	55.1	54.6	53.4	52.5	51.4	51.0	50.0	48.8	47.9
16.0	53.3	52.5	51.8	50.7	50.3	49.4	49.0	47.8	47.0	45.8	45.5	44.5	43.3	42.3
18.0	47.1/17.3	46.3/17.3	45.6/17.3	45.1/17.3	44.1/17.3	43.3/17.3	42.9/17.3	41.8/17.3	40.9/17.3	39.8/17.3	39.5/17.3	38.5/17.3	37.4/17.3	36.4/17.3

(EC404033)

### ■ w/36.55m Tower

Jib length (m) Working radius (m)	21.35	24.40	27.45	30.50	33.50	36.55	39.60	42.65	45.70	48.75	51.80	54.85	57.90	60.95
9.0	66.7/9.2	66.3/9.2	66.1/9.2	65.9/9.2	65.7/9.2	65.5/9.2	65.3/9.2	65.1/9.2	64.9/9.2	64.7/9.2	64.5/9.2	64.3/9.2	64.1/9.2	63.9/9.2
10.0	65.9	65.6	65.4	65.2	65.0	64.8	64.6	64.4	64.2	64.0	63.8	63.6	63.4	63.2
11.0	65.1	64.8	64.6	64.4	64.2	64.0	63.8	63.6	63.4	63.2	63.0	62.8	62.6	62.4
12.0	64.3	64.0	63.8	63.6	63.4	63.2	63.0	62.8	62.6	62.4	62.2	62.0	61.8	61.6
13.0	63.5	63.1	62.9	62.7	62.5	62.3	62.1	61.9	61.7	61.5	61.3	61.1	60.9	60.7
14.0	62.7	62.4	62.2	62.0	61.8	61.6	61.2	60.0	59.1	57.9	57.6	56.7	55.4	54.4
15.0	58.8	58.0	57.2	56.8	55.7	55.5	54.5	53.4	52.5	51.3	51.1	50.1	48.9	47.9
16.0	53.0	52.2	51.5	51.1	50.1	49.8	48.9	47.7	46.9	45.8	45.5	44.6	43.4	42.4
18.0	43.9	43.1	42.4	42.0	41.0	40.8	39.9	38.8	38.0	36.9	36.7	35.8	34.7	33.7
20.0	41.6/18.6	40.9/18.6	40.2/18.6	39.7/18.6	38.8/18.6	38.5/18.6	37.6/18.6	36.6/18.6	35.8/18.6	34.7/18.6	34.4/18.6	33.6/18.6	32.5/18.6	31.6/18.6

(EC404033)

### ■ w/39.60m Tower

Jib length (m) Working radius (m)	21.35	24.40	27.45	30.50	33.50	36.55	39.60	42.65	45.70	48.75	51.80	54.85	57.90	60.95
9.0	66.2/9.8	65.9/9.8	65.7/9.8	65.5/9.8	65.3/9.8	65.1/9.8	64.9/9.8	64.7/9.8	64.5/9.8	64.3/9.8	64.1/9.8	63.9/9.8	63.7/9.8	63.5/9.8
10.0	65.8	65.5	65.3	65.1	64.9	64.7	64.5	64.3	64.1	63.9	63.7	63.5	63.3	63.1
11.0	65.0	64.7	64.5	64.3	64.1	63.9	63.7	63.5	63.3	63.1	62.9	62.7	62.5	62.3
12.0	64.2	63.9	63.7	63.5	63.2	63.0	62.8	62.7	62.5	62.3	62.1	61.9	61.7	61.5
13.0	63.4	63.1	62.9	62.7	62.5	62.3	62.1	61.9	61.7	61.5	61.3	61.1	60.9	60.7
14.0	62.6	62.3	62.1	61.9	61.7	61.5	61.0	59.8	58.8	58.7	57.6	56.6	55.4	54.4
15.0	58.4	58.1	57.4	56.5	55.5	55.3	54.3	53.2	52.3	52.1	51.0	50.1	48.9	47.9
16.0	52.7	52.3	51.6	50.8	49.8	49.6	48.7	47.6	46.7	46.5	45.4	44.5	43.4	42.4
18.0	43.5	43.2	42.5	41.7	40.8	40.6	39.7	38.6	37.8	37.5	36.6	35.7	34.6	33.7
20.0	36.9/19.9	36.5/19.9	35.9/19.9	35.1/19.9	34.2/19.9	34.0/19.9	33.1/19.9	32.1/19.9	31.3/19.9	31.0/19.9	30.1/19.9	29.3/19.9	28.3/19.9	27.4/19.9

(EC404033)

### ■ w/42.65m Tower

Jib length (m) Working radius (m)	21.35	24.40	27.45	30.50	33.50	36.55	39.60	42.65	45.70	48.75	51.80	54.85	57.90	60.95
10.0	65.7/10.3	65.4/10.3	65.2/10.3	65.0/10.3	64.8/10.3	64.6/10.3	64.4/10.3	64.2/10.3	64.0/10.3	63.8/10.3	63.6/10.3	63.4/10.3	63.2/10.3	63.0/10.3
11.0	64.9	64.6	64.4	64.2	64.0	63.8	63.6	63.4	63.2	63.0	62.8	62.6	62.4	62.2
12.0	64.1	63.8	63.6	63.4	63.2	63.0	62.8	62.6	62.4	62.2	62.0	61.8	61.6	62.4
13.0	63.3	63.0	62.8	62.6	62.4	62.2	62.0	61.8	61.6	61.4	61.2	61.0	60.5	60.3
14.0	62.5	62.2	62.0	61.8	61.6	61.4	60.9	59.8	58.9	58.7	57.6	56.7	55.5	54.5
15.0	58.2	57.9	57.2	56.3	55.3	55.2	54.2	53.1	52.3	52.0	51.0	50.1	49.0	48.0
16.0	52.5	52.1	51.5	50.6	49.7	49.5	48.6	47.5	46.7	46.4	45.4	44.5	43.4	42.6
18.0	43.3	42.0	42.3	41.5	40.6	40.4	39.6	38.5	37.7	37.5	36.6	35.7	34.7	33.8
20.0	36.3	36.0	35.4	34.6	33.7	33.5	32.7	31.7	31.0	30.7	29.8	29.0	28.0	27.2
22.0	32.9/21.2	32.6/21.2	32.0/21.2	31.2/21.2	30.3/21.2	30.1/21.2	29.3/21.2	28.4/21.2	27.6/21.2	27.4/21.2	26.5/21.2	25.7/21.2	24.7/21.2	23.9/21.2

(EC404033)

### ■ w/45.70m Tower

Jib length (m) Working radius (m)	21.35	24.40	27.45	30.50	33.50	36.55	39.60	42.65	45.70	48.75	51.80	54.85	57.90	60.95
10.0	65.0/10.8	64.7/10.8	64.5/10.8	64.3/10.8	64.1/10.8	63.9/10.8	63.7/10.8	63.5/10.8	63.3/10.8	63.1/10.8	62.9/10.8	62.7/10.8	62.5/10.8	62.3/10.8
11.0	64.8	64.5	64.3	64.1	63.9	63.7	63.5	63.3	63.1	62.9	62.7	62.5	62.3	62.1
12.0	64.0	63.7	63.5	63.3	63.1	62.9	62.7	62.5	62.3	62.1	61.9	61.7	61.5	61.3
13.0	63.2	62.9	62.7	62.5	62.3	62.1	61.9	61.7	61.5	61.3	61.1	60.9	60.7	60.5
14.0	62.4	62.1	61.9	61.7	61.5	61.3	61.1	60.7	59.6	58.7	58.6	57.5	56.6	55.4
15.0	58.3	57.6	56.9	56.1	55.1	54.9	54.0	52.9	52.1	51.9	50.9	50.0	48.9	47.9
16.0	52.6	51.8	51.2	50.3	49.4	49.3	48.4	47.3	46.5	46.3	45.3	44.5	43.4	42.5
18.0	43.3	42.6	42.0	41.2	40.3	40.2	39.3	38.3	37.5	37.3	36.4	35.6	34.6	33.7
20.0	36.3	35.7	35.1	34.3	33.4	33.3	32.4	31.5	30.7	30.5	29.6	28.9	27.9	27.1
22.0	30.8	30.2	29.6	28.8	28.0	27.8	27.0	26.1	25.4	25.2	24.3	23.6	22.6	21.8
24.0	29.6/22.5	29.0/22.5	28.4/22.5	27.7/22.5	26.8/22.5	26.7/22.5	25.9/22.5	24.9/22.5	24.2/22.5	24.0/22.5	23.2/22.5	22.4/22.5	21.5/22.5	20.7/22.5

(EC404033)

### ■ w/48.75m Tower

Jib length (m) Working radius (m)	21.35	24.40	27.45	30.50	33.50	36.55	39.60	42.65	45.70	48.75	51.80	54.85	57.90	60.95
11.0	64.9/11.4	64.6/11.4	64.4/11.4	64.2/11.4	64.0/11.4	63.8/11.4	63.6/11.4	63.4/11.4	63.2/11.4	63.0/11.4	62.8/11.4	62.6/11.4	62.4/11.4	62.2/11.4
12.0	63.9	63.6	63.4	63.2	63.0	62.8	62.6	62.4	62.2	62.0	61.8	61.6	61.4	61.2
13.0	63.1	62.8	62.6	62.4	62.2	62.0	61.8	61.6	61.4	61.2	61.0	60.8	60.6	60.4
14.0	62.3	62.0	61.8	61.6	61.4	61.2	61.0	60.5	60.2	59.4	58.4	57.3	56.4	55.3
15.0	58.0	57.2	56.6	56.3	55.4	54.7	53.8	53.5	52.7	51.7	50.7	48.8	48.8	47.8
16.0	52.2	51.5	50.8	50.6	49.7	49.0	48.1	47.8	47.0	46.1	45.1	44.3	43.2	42.3
18.0	43.0	42.3	41.7	41.4	40.6	39.9	39.0	38.7	38.0	37.1	36.2	35.4	34.4	33.6
20.0	36.0	35.3	34.7	34.4	33.6	33.0	32.2	31.8	31.2	30.3	29.4	28.7	27.7	26.9
22.0	30.4	29.8	29.2	29.0	28.1	27.5	26.7	26.4	25.8	24.9	24.1	23.4	22.4	21.7
24.0	26.4/23.8	25.8/23.8	25.2/23.8	24.9/23.8	24.1/23.8	23.5/23.8	22.8/23.8	22.5/23.8	21.8/23.8	21.0/23.8	20.2/23.8	19.5/23.8	18.6/23.8	17.8/23.8

(EC404033)

### ■ w/51.80m Tower

Jib length (m) Working radius (m)	21.35	24.40	27.45	30.50	33.50	36.55	39.60	42.65	45.70	48.75	51.80	54.85	57.90	60.95
11.0	64.4/11.9	64.1/11.9	63.9/11.9	63.7/11.9	63.5/11.9	63.3/11.9	63.1/11.9	62.9/11.9	62.7/11.9	62.5/11.9	62.3/11.9	62.2/11.9	60.8/11.9	58.6/11.9
12.0	63.8	63.5	63.3	63.1	62.9	62.7	62.5	62.3	62.1	61.9	61.7	61.4	59.3	57.1
13.0	63.0	62.7	62.5	62.3	62.1	61.9	61.7	61.5	61.3	61.1	60.9	60.0	57.9	55.7
14.0	62.2	61.9	61.7	61.5	61.3	61.1	60.3	60.1	59.3	58.3	57.3	56.4	55.3	54.3
15.0	57.8	57.0	56.4	56.1	55.2	54.5	53.6	53.3	52.6	51.6	50.6	49.8	48.7	47.8
16.0	52.0	51.3	50.6	50.4	49.5	48.8	47.9	47.7	46.9	46.0	45.1	44.2	43.2	42.3
18.0	42.8	42.1	41.5	41.2	40.4	39.7	38.9	38.6	37.9	37.0	36.1	35.4	34.4	33.5
20.0	35.7	35.1	34.5	34.2	33.4	32.8	32.0	31.7	31.1	30.2	29.3	28.6	27.7	26.9
22.0	30.2	29.6	29.0	28.8	28.0	27.4	26.6	26.3	25.7	24.8	24.0	23.3	22.4	21.6
24.0	25.8	25.1	24.6	24.3	23.6	23.0	22.2	21.9	21.3	20.5	19.7	19.0	18.1	17.4
26.0	23.7/25.1	23.0/25.1	22.5/25.1	22.2/25.1	21.5/25.1	20.9/25.1	20.2/25.1	19.9/25.1	19.3/25.1	18.5/25.1	17.7/25.1	17.0/25.1	16.1/25.1	15.4/25.1

(EC404033)

### ■ w/54.85m Tower

Jib length (m) Working radius (m)	24.40	27.45	30.50	33.50	36.55	39.60	42.65	45.70	48.75	51.80	54.85	57.90	60.95
12.0	62.9/12.4	62.7/12.4	62.5/12.4	62.3/12.4	62.1/12.4	61.9/12.4	61.5/12.4	59.5/12.4	57.6/12.4	55.8/12.4	52.9/12.4	51.0/12.4	49.1/12.4
13.0	62.5	62.3	62.1	61.9	61.7	61.5	60.8	58.8	56.9	55.1	52.2	50.3	48.4
14.0	61.7	61.5	61.3	61.1	60.9	60.7	59.5	57.5	55.6	53.8	51.0	49.1	47.2
15.0	56.7	56.1	55.8	54.9	54.2	53.4	53.1	52.4	51.4	50.5	49.9	48.0	46.1
16.0	50.9	50.3	50.1	49.2	48.5	47.7	47.4	46.7	45.8	44.9	44.3	43.3	42.4
18.0	41.7	41.1	40.9	40.1	39.4	38.6	38.4	37.7	36.8	25.9	35.4	34.4	33.6
20.0	34.7	34.1	33.9	33.1	32.5	31.7	31.5	30.8	30.0	29.1	28.6	27.7	26.9
22.0	29.2	28.6	27.4	27.6	27.0	26.3	26.0	25.4	24.6	23.8	23.3	22.4	21.6
24.0	24.7	24.2	24.0	23.2	22.6	21.9	21.6	21.0	20.2	19.4	19.0	18.1	17.4
26.0	21.1	20.5	20.3	19.6	19.0	18.3	18.0	17.4	16.7	15.9	15.4	14.6	13.9
28.0	20.6/26.3	20.1/26.3	19.8/26.3	19.1/26.3	18.5/26.3	17.8/26.3	17.5/26.3	16.9/26.3	16.2/26.3	15.4/26.3	15.0/26.3	14.1/26.3	13.4/26.3

(EC404033)

## ■ w/57.90m Tower

Jib length (m)	27.45	30.50	33.50	36.55	39.60	42.65	45.70	48.75	51.80	54.85	57.90	60.95
Working radius (m)												
13.0	54.0	54.0	54.0	54.0	54.0	53.0	51.2	49.5	47.9	45.4	43.7	42.0
14.0	54.0	54.0	54.0	54.0	53.8	51.8	50.0	48.4	46.7	44.3	42.6	40.9
15.0	53.1	52.9	52.7	52.5	52.4	50.6	48.9	47.3	45.7	43.3	41.6	39.9
16.0	51.0	50.2	49.3	48.7	47.8	47.6	46.9	46.3	44.6	42.3	40.6	38.9
18.0	41.7	41.0	40.2	39.5	38.7	38.5	37.9	37.0	36.1	35.4	34.4	33.6
20.0	34.7	34.0	33.2	32.6	31.8	31.6	30.9	30.1	29.3	28.6	27.7	26.9
22.0	29.1	28.5	27.7	27.1	26.4	26.1	25.5	24.7	23.9	23.2	22.3	21.6
24.0	24.7	24.0	23.3	22.7	22.0	21.7	21.1	20.4	19.6	18.9	18.1	17.4
26.0	21.0	20.4	19.6	19.1	18.3	18.1	17.5	16.8	16.0	15.4	14.5	13.9
28.0	18.5/27.6	17.9/27.6	17.1/27.6	16.6/27.6	15.9/27.6	15.6/27.6	15.1/27.6	14.3/27.6	13.6/27.6	13.0/27.6	12.1/27.6	11.5/27.6

(EC404033)

## ■ w/60.95m Tower

Jib length (m)	30.50	33.50	36.55	39.60	42.65	45.70	48.75	51.80	54.85	57.90	60.95
Working radius (m)											
13.0	52.0/13.5	50.4/13.5	48.9/13.5	46.3/13.5	45.6/13.5	44.0/13.5	42.5/13.5	41.0/13.5	38.9/13.5	37.4/13.5	35.8/13.5
14.0	51.4	49.8	48.3	46.7	45.0	43.4	41.9	40.4	38.3	36.8	35.2
15.0	50.4	48.7	47.2	45.7	43.9	42.4	40.9	39.5	37.3	35.8	34.3
16.0	49.3	47.7	46.2	44.7	43.0	41.4	40.0	38.6	36.5	35.0	33.5
18.0	41.3	40.5	39.9	39.2	38.3	37.6	36.8	36.8	34.8	33.4	31.9
20.0	34.3	33.5	32.9	32.2	31.4	30.7	30.0	30.0	29.5	28.7	28.0
22.0	28.7	28.0	27.4	26.7	25.9	25.3	24.6	24.6	24.2	23.3	22.7
24.0	24.2	23.5	23.0	22.3	21.5	20.9	20.2	20.2	19.8	19.0	18.4
26.0	20.6	19.9	19.3	18.7	17.9	17.3	16.6	16.6	16.2	15.4	14.8
28.0	17.5	16.8	16.3	15.6	14.9	14.3	13.6	13.6	13.2	12.4	11.8
30.0	16.2/28.9	15.6/28.9	15.1/28.9	14.4/28.9	13.6/28.9	13.1/28.9	12.4/28.9	12.4/28.9	12.0/28.9	11.2/28.9	10.6/28.9

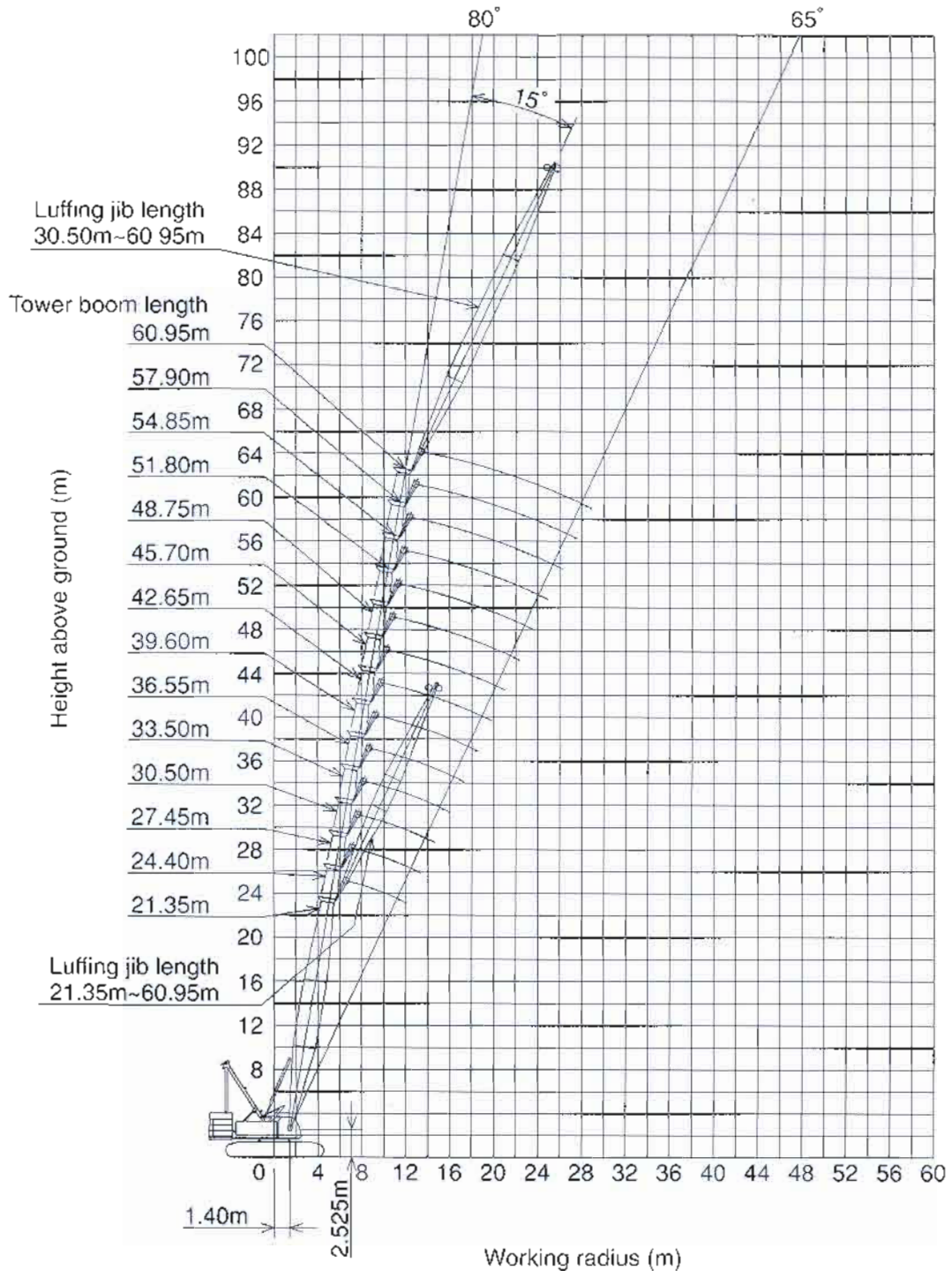
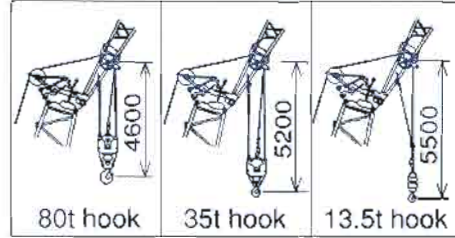
(EC404033)

### Notes — Luffing jib foot crane capacities

- Capacities on these charts are available when handling load off an optional 3-nylon sheave machinery provided on luffing jib foot with movement of tower boom hoisting/lowering under the condition that luffing jib offset angle to tower boom is 15 degrees. It is accordingly required to attach a 3-nylon sheave machinery as an optional extra on a part of luffing jib foot.
- Capacities included in this chart are the maximum allowable, and are based on machine standing level on firm supporting surface under ideal job conditions.
- Capacities are in metric tons, and are rated in accordance with American SAE Standards; the figures are all based on factors other than those which would cause a tipping condition.
- Capacities are based on freely suspended loads and make no allowance for such factors as the effect of wind, sudden stopping of loads, supporting surface conditions, and operating speeds. Operator must reduce load ratings to take such conditions into account. Deduction from rated capacities must be made for weight of hook block, weighted ball/hook, sling, spreader bar, or other suspended gear. Hook block weight is as follows:  
80t ..... 1.4ton    35t ..... 0.9ton    13.5t ..... 0.6ton
- All capacities are rated for 360° swing.
- Least stable rated condition is over the side.
- A 93.7ton counterweight and 14 0ton carbody weight are required for all capacities on these charts.
- Attachment must be erected and lowered over the ends of the crawler mounting.
- Tower boom and jib configurations shall be in accordance with manufacturer's standard described here in "Tower Boom & Jib Combination Diagram" shown in page 26.

# Luffing Jib Foot Crane Working Ranges

Hook lift allowance height:





Specifications subject to change without notice

**(1300 65 8888)**

Website: [www.btequipment.com.au](http://www.btequipment.com.au)

		Phone	Fax
BRISBANE	10-14 Ashover Road, Rocklea. Qld 4106	(07) 3373 6400	(07) 3875 1680
SYDNEY	6 Ferngrove Place, South Granville. NSW 2142	(02) 9780 7200	(02) 9780 7290
MELBOURNE	80-86 Frankston-Dandenong Road, Dandenong. Vic 3175	(03) 9554 0300	(03) 9554 0398
ADELAIDE	908 Main North Road, Mawson Lakes. SA 5095	(08) 8262 8292	(08) 8262 8320
PERTH	50 Great Eastern Highway, South Guildford. WA 6055	(08) 9478 0600	(08) 9478 0688

Address Inquires to.