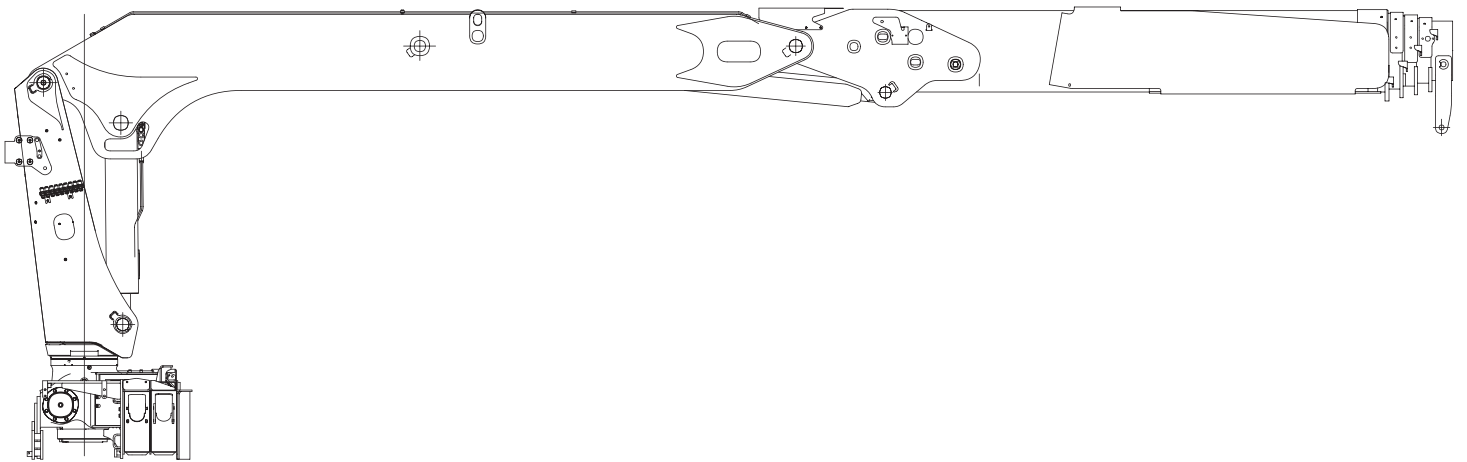


# Hiab 335 K

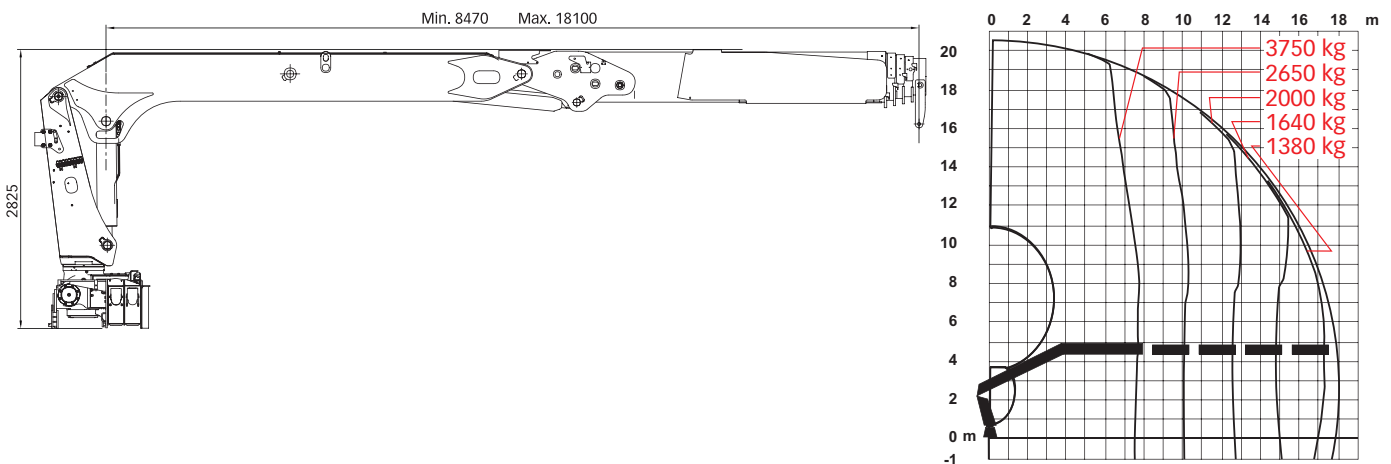
## Range 26–29 tm



# Hiab 335 K Basic data

Technical data	K-4 CLX	K-4 HiPro	K-4 Pro
Max. lifting capacity (kNm)	261	283	261
Outreach, hydraulic extensions (m)	18.1	18.1	18.1
Outreach, manual extensions (m)	0	0	0
Outreach / lifting capacity (m/kg)	7.7 / 3400	7.7 / 3750	7.7 / 3400
	10.1 / 2400	10.1 / 2650	10.1 / 2400
	12.6 / 1820	12.6 / 2000	12.6 / 1820
	14.9 / 1480	14.9 / 1640	14.9 / 1480
	17.3 / 1250	17.3 / 1380	17.3 / 1250
Slewing angle (°)	460	460	460
Height in folded position (mm)	2825	2825	2825
Width in folded position (mm)	2500	2500	2500
Installation space needed (mm)	1142	1142	1142
Weight, "standard" crane without stabilisers (kg)	4646	4674	4630
Weight, stabilizer equipment (kg)	660	660	660

## Hiab 335 K-4 HiPro



**Disclaimer** Hiab cranes have been built to meet the highest standards of safety and service life and have been thoroughly tested. Strength calculations for this model have been carried out in accordance with EN13001 in fatigue class S2. Cargotec's certified Quality Assurance System complies with ISO 9001. Some of the items in our literature may be extra equipment. Certain applications may require an official permit. We reserve the right to change technical specifications without prior notice. Hiab cranes produced for EU-countries are CE-marked and comply with the European Standard EN 12999.

**Hiab** is the world's leading provider of on-road load handling equipment. Our high performance product range includes loader cranes, forestry and recycling cranes, demountables, truck-mounted forklifts and tail lifts. We aim to set the industry benchmark for customer satisfaction by providing products and services that meet customer needs globally. [www.hiab.com](http://www.hiab.com)  
Hiab is part of Cargotec. [www.cargotec.com](http://www.cargotec.com)