

# MANITEX VALLA 120 D



## Diesel operated Arm Lift Mobile Crane Max. Capacity **Kg. 12.000**



**Valla**

OUT REACH (mm)	CAPACITY (kg)
2.000	7.000
4.000	3.500
7.000	1.900

### TECHNICAL DATA

**CRANE FRAME:** Six-wheelers frame fabricated from preformed and welded steel plate with built-in counterweight.

**ENGINE:** Diesel 4 cylinders water cooled with electric starter and automatic fuel switch off.

**TRANSMISSION:** Automatic (hydrostatic) "automotive". Differential axle. Max speed 14 Km/h.

**BRAKES:** foot hydraulically operated brakes (disc on front, drums on rear wheels). Parking hand brake mechanically operated.

**SUSPENSION:** oscillating rear axle with mechanical lock.

**STEERING:** power steering with hydraulic cylinder and 140° articulation. Safety valves and filter.

**WHEELS:** Nr. 2 rear pneumatic 250 R15- Nr. 4 front superelastic 250 R15

**BOOM:** fabricated from preformed and welded quality steel plate. Nr.4 sections: 1 fixed; 3 hydraulically telescoping. Fitted with nylon wear pads adjustable wear pads on the sides.

**LMI:** Electronic Load Moment Indicator. Display showing lifted load, max allowed load, lifting percentage, operating radius, angle, telescope and light indicators on the operative mode.

**TOTAL WEIGHT:** approx. Kg. 13.000    **MAX. CAPACITY:** Kg. 12.000

**Options on request:** hydraulic winch, chain hoists, carry-deck, manual and hydraulic jibs, man bucket, remote control, full set of road lights.

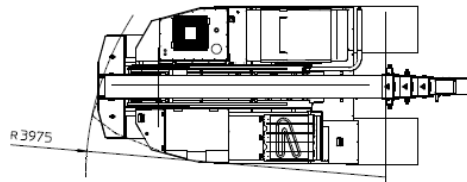
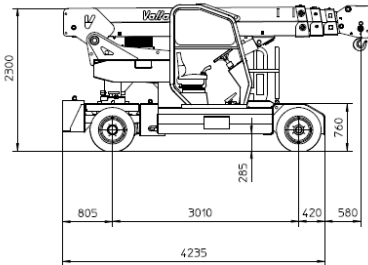
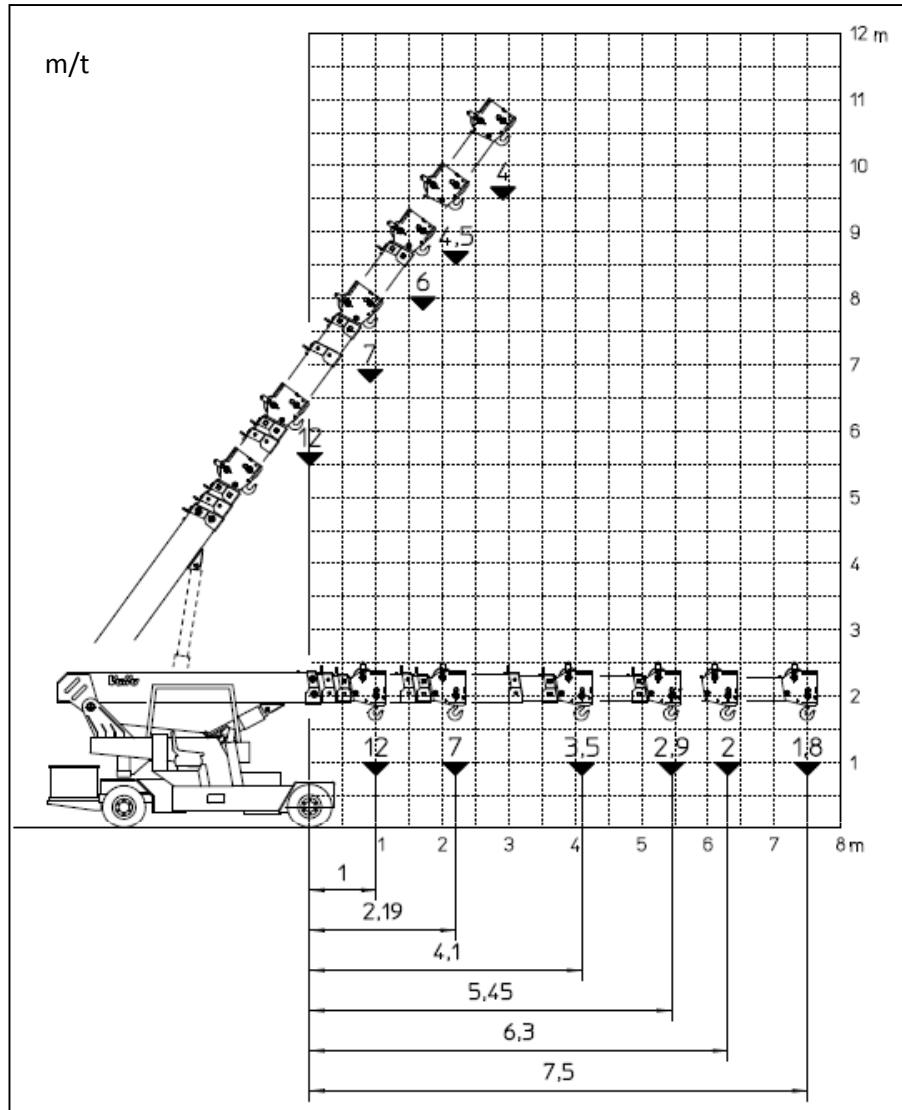
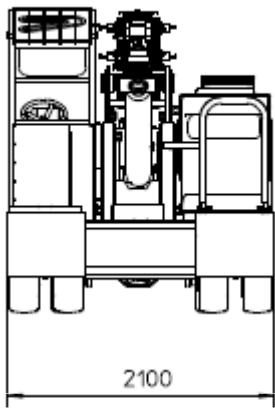


# MANITEX VALLA 120 D



Crane complies with the following standard:  
 -2006/42/CE  
 -UNIEN13000  
 -I.S.P.E.S.L.

mm.



Data above are subject to be changed without any previous notice. Pictures may differ from descriptive leaflet.



Valla – division of CVS Ferrari Srl  
 Via Piacenza, 45 – 29010 Calendasco – Piacenza – ITALIA  
 Tel. 0039 0523 762025 – 762004 – Fax 0039 0523 760531  
 Internet: [www.valla.com](http://www.valla.com) – email: [info@valla.com](mailto:info@valla.com)