



Altec AT235 Articulating/Telescopic Aerial Device



- **Unique Articulating Arm Provides Superior Height and Reach Capability**
- **Working Side Reach Up To 27.0 ft (8.2 m)**
- **Platform Capacity 350 lbs (159 kg)**
- **Working Height of 40.3 ft (12.3 m)**

- **Easily Mounted on 15,000 lb (6804 kg) GVWR Chassis — No Outriggers Required**
- **Provides Easy Access to Set-Back Poles**



Altec AT235 Specifications

STANDARD FEATURES

- Non-Insulated Aerial Device
- All Steel Boom Construction
- Hydraulically Extended Boom
- Noncontinuous Rotation
- Engine Start/Stop at Upper and Lower Controls
- Open Center Hydraulic System
- 120 VAC Circuit in Booms with Outlets at the Platform
- Can Mount on a 15,000 lb (6804 kg) GVWR Chassis, 60 in (1524 mm) CA or 84 in (2134 mm) CA

OPTIONS

- Pedestal or Bridge Mountings
- Choice of Platforms:
 - Side or End-Mounted
 - Walk-In Round and Rectangular Splicer Platforms
 - Gravity or Hydraulic Leveling
- Single or Two Speed Controls
- Choice of Reservoir:
 - Bed-Mounted
 - Pedestal-Mounted
- Airline to Platform
- Canopy and Curtain Assembly
- Secondary Stowage System
- Heater for Platform
- Seat for Platform
- Tool Pouches and Trays

GENERAL SPECIFICATIONS

Ground to Bottom of Platform* —		
End-Mounted Platform	35.3 ft	10.7 m
(@ reach from centerline)	8.0 ft	2.4 m
Side-Mounted Platform	35.0 ft	10.7 m
(@ reach from centerline)	6.5 ft	2.0 m
Working Height* —		
End-Mounted Platform	40.3 ft	12.3 m
Side-Mounted Platform	40.3 ft	12.3 m
Maximum Reach from Centerline of Rotation to Lip of Platform —		
End-Mounted Platform	26.5 ft	8.1 m
Side-Mounted Platform	24.9 ft	7.6 m
Stowed Travel Height, approximate*		
	10.9 ft	3.3 m
Platform Capacity —		
End-Mounted	350 lb	159 kg
Side-Mounted	350 lb	159 kg
Articulating Arm		
	0° to 90°	
Boom Articulation		
	-25° to 78°	
Rotation		
	370° Noncontinuous	

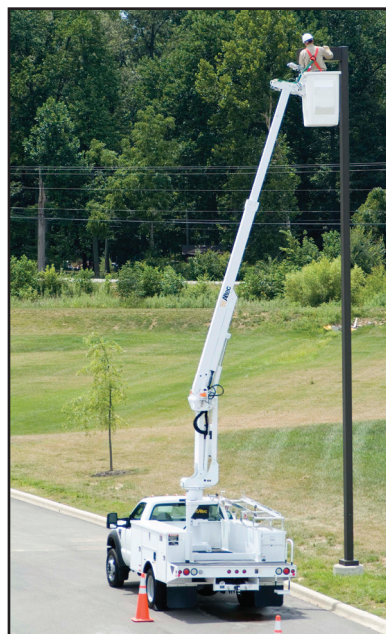
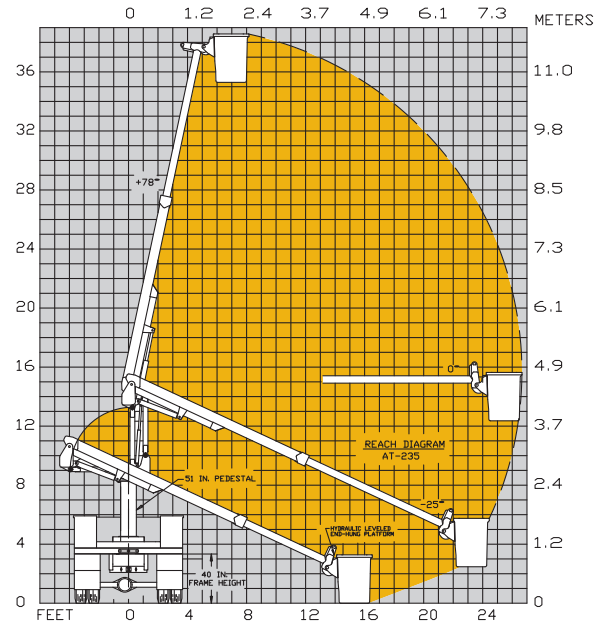
*Based on 40-inch (1016 mm) Chassis Frame Height

Altec Industries, Inc. reserves the right to improve models and change specifications without notice or obligation. Altec Aerial Devices meet or exceed all applicable ANSI and CSA Standards as of the date of manufacture.

RECOMMENDED FEATURES

- Fall Protection System
- Wheel Chocks

REACH DIAGRAM



Exceptional Vertical Reach



Easy Ground Access to the Platform

Altec Sales and Service



Manufacturing and Service Facilities Located Throughout the United States and Canada
www.altec.com

Altec Industries, Inc.

Post Office Box 10264
Birmingham, Alabama 35202
Phone 205/991-7733
Fax 205/991-9993
sales@altec.com

ALT4001081
AT235-3M-9/08