

MANITEX VALLA 400 D



Diesel operated Arm Lift Mobile Crane Max. Capacity Kg. 40.000



Valla

OUT REACH (mm)	CAPACITY (kg)
2.000	40.000
6.000	11.000
9.000	6.500

TECHNICAL DATA

CRANE FRAME: fabricated from preformed and welded steel plate with built-in counterweight.

ENGINE: Diesel 6 cylinders IVECO motor

ELECTRIC SYSTEM: 24 V

TRANSMISSION: Automatic torque converter – 3 gear forward + 3 gear reverse; max speed up to 25 km/h – hydraulic pump PTO

BRAKES: service hydraulic (disk brakes), parking hydraulic

STEERING: power steering operated through own hydraulic circuit. Fitted with safety valves and filter.

CAB: automotive type

WHEELS: Nr. 4 on drive axle 14.00 – 24" + Nr. 2 on steering axle.

HYDRAULIC SYSTEM: electric proportional distributor controlled with joystick. Fitted with filter and safety valves. Maximum hydraulic pressure 220 Bar.

BOOM: boom fabricated from preformed and welded quality steel plate. Nr.4 telescoping sections: 1 fixed; 2 hydraulically telescoping. Fitted with nylon wear pads adjustable wear pads on the sides.

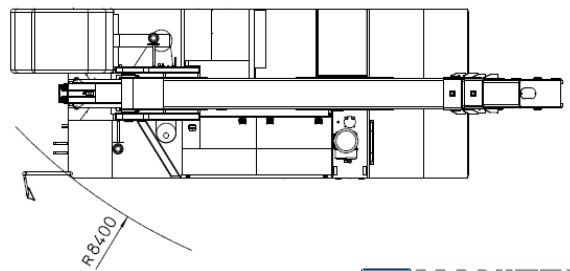
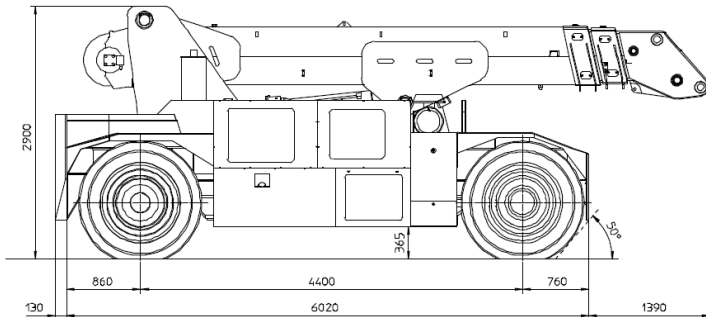
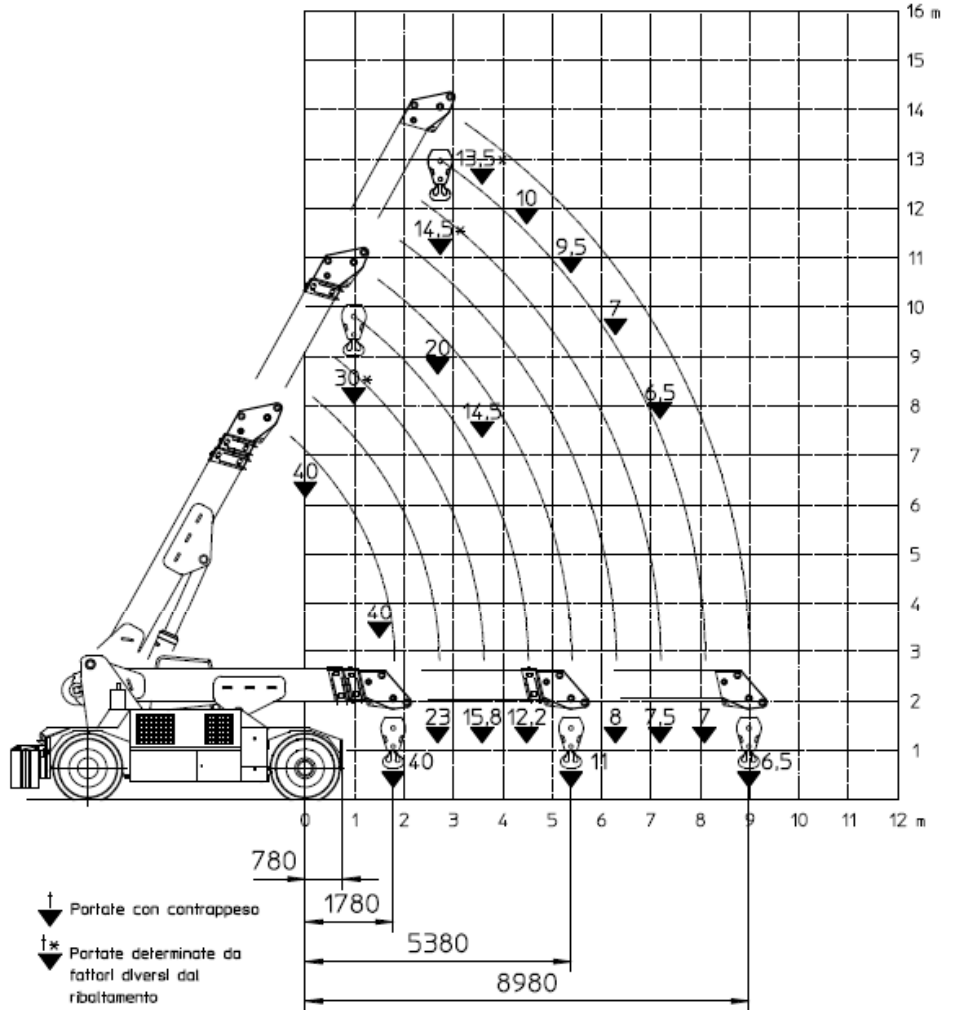
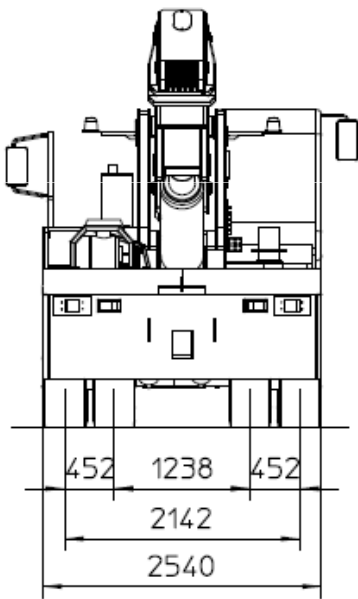
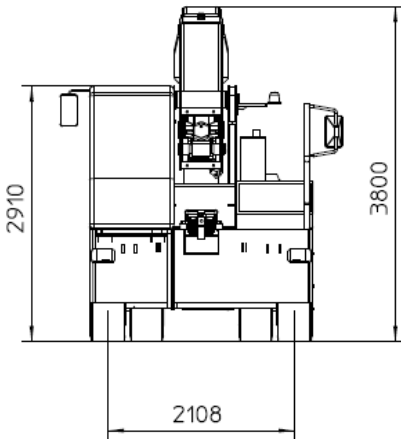
WINCH: hydraulic with cable inside the boom

LMI: Electronic Load Moment Indicator. Display showing lifted load, max allowed load, tilting percentage, operating radius, angle, telescope and light indicators on the operative mode.

TOTAL WEIGHT: approx. Kg. 29.000 **MAX. CAPACITY:** Kg. 40.000

Options on request: manual and hydraulic jibs; cable remote control; radio remote control;





Data subject to be changed without any previous notice. Pictures may differ from technical description.