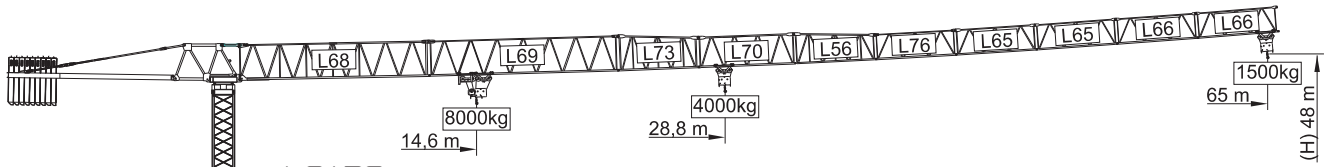
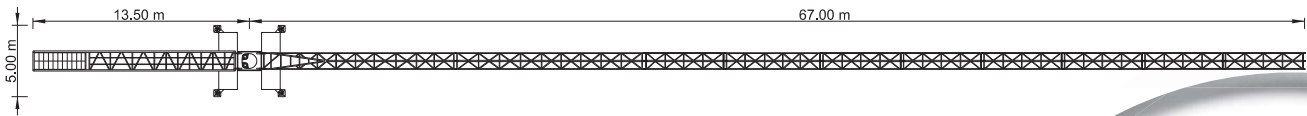
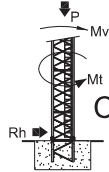
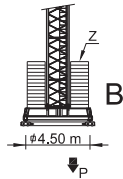
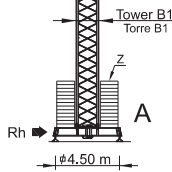


# SGT 6515TL



## LOADS CARGAS

Counterweight Contrapeso	Jib Length Comprimento da Lança	Kg / m		m	18	23	28	33	38	40	45	50	55	60	65
		8000	4000												
19000kg 9x2000kg+1x1000kg	65 m L68+L69+L73+L70+L56+ L76+L65+L65+L66+L66	14,6 m	28,8 m	4000	4000	4000	3430	2920	2750	2380	2100	1860	1660	1500	1100
18000kg 8x2000kg+2x1000kg	60 m L68+L69+L73+L70+L56+ L76+L65+L65+L66	15,5 m	30,7 m	4000	4000	4000	3650	3100	2920	2540	2240	1990	1800	1800	
18000kg 8x2000kg+2x1000kg	55 m L68+L69+L73+L70+L56+ L76+L65+L66	17,3 m	34,2 m	4000	4000	4000	4000	3510	3310	2890	2550	2300	2300		
17000kg 8x2000kg+1x1000kg	50 m L68+L69+L73+L70+L56+ L76+L65	18,5 m	36,7 m	4000	4000	4000	4000	3800	3580	3130	2800	2800			
16000kg 8x2000kg	45 m L68+L69+L73+L70+L56+L76	19,2 m	37,6 m	4000	4000	4000	4000	3950	3730	3300	2900				
15000kg 7x2000kg+1x1000kg	40 m L68+L69+L73+L70+L56	19,3 m	37,8 m	4000	4000	4000	4000	3970	3800	3400					
13000kg 6x2000kg+1x1000kg	38 m L68+L73+L70+L56+L76+L65	19,2 m	38 m	4000	4000	4000	4000	4000							
11000kg 5x2000kg+1x1000kg	33 m L68+L73+L70+L56+L76	18,5 m	33 m	4000	4000	4000	4000	4000							
10000kg 5x2000kg	28 m L68+L73+L70+L56	17,3 m	28 m	4000	4000	4000	4000	4000							



## REACTIONS REAÇÕES

BALLAST TABLE AND MAXIMUM REACTIONS FOR ALL JIB VERSIONS TABELA DE LASTRO E REAÇÕES MÁXIMAS PARA TODAS AS VERSÕES DE LANÇA						
A / B			C			
H m	Z kN	P kN	Mv kNm	P kN	Rh kN	Mt kNm
24	600	495	1490	392	30	135
27	700	529	1534	400	34	135
30	700	539	1582	408	38	135
33	700	549	1634	415	42	135
36	700	560	1691	423	45	135
39	800	596	1750	431	49	135
42	800	608	1815	439	53	135
45	900	646	1884	449	57	135
48	1000	685	1957	457	61	135

## CHARACTERISTICS CARACTERÍSTICAS

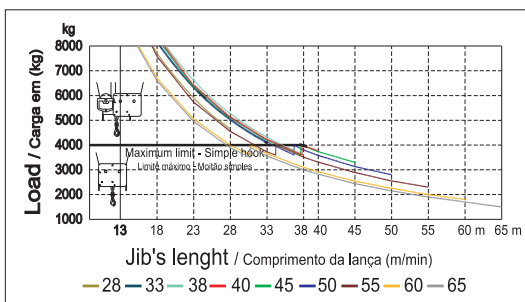
Motions Movimento		Speed Velocidade	Motor's power Pot. dos motores
↑↓ Hoisting Elevação	⬆️⬇️ ⬆️⬇️	0 a 85 m/min.	22 kW
		0 a 42,5 m/min.	
○ Slewing Orientação		0 a 1 r.p.m.	3x5 da.N.m
↔️ Trolleying Distribuição		0 a 60 m/min.	5,5 kW
↔️ Travelling Translação	*	0 a 10 m/min.	2x4 kW
⚡ Electric power		/ Potência total	40 kVA
Tension / Tensão		400 v ±5% (50 Hz)	

\* Option / Opção

PARTS  
ELEMENTOS

		A (mm)	B (mm)	C (mm)	Peso (kg)
Jib section Lança		11970	1900	2900	5050
Jib section Lança		11960	1160	2260	1650
Jib section Lança		5230	1160	2260	750
Jib section Lança		6200	1160	1950	680
Jib section Lança		5200	1160	1930	590
Jib section Lança		5180	1160	1610	370
Jib section Lança		5110	1160	1610	330
Jib section Lança		5110	1160	1610	300
Tower section 12m Tramo torre 12m		12000	1620	1620	3450
Tower section 6m Tramo torre 6m		6130	1620	1620	1800
Tower section 3m Tramo torre 3m		3195	1620	1620	980
Telescopic section Tramo telescopagem		3195	1830	1830	920
Head section Cabeçote		2620	2180	2150	4860
Pyramid Piramide		3860	1220	2280	1840
Counter-jib Contra-lança		10550	1500	500	4000
Cross shaped base Chassis		6620	500	1040	1850
Cross shaped base Chassis		3210	340	1040	950
Ballast Contra-peso		1160	165	2950	1000
		1160	330	2950	2000
Foundation tower Tramo de encastrar		1775	1600	1600	650

LOAD DIAGRAM  
DIAGRAMA DE CARGAS



SPEED DIAGRAM  
DIAGRAMA DE VELOCIDADE

