

MANITEX VALLA 180 E



Electric battery operated Arm Lift Mobile Crane Max. Capacity **Kg. 18.000**



TECHNICAL DATA

Valla	
OUT REACH (mm)	CAPACITY (kg)
3.000	7.500
5.000	4.000
7.000	3.000

CRANE FRAME: Six-wheel frame fabricated from preformed and welded steel plate with built-in counterweight.

TRACTION: by DC 20 kw 96V reversible electric motor, controlled by chopper.

Boom movements: 20 kW - 96 V service motor pump

BATTERY: 96V 1036Ah battery, battery meter on dashboard.

BRAKES: foot hydraulically operated brakes (disc on front, drums on rear wheels). Parking hand brake mechanically operated.

SUSPENSION: oscillating rear axle with mechanical lock.

STEERING: power steering operated through own hydraulic circuit by a hydraulic cylinder fitted between the articulated power unit and the crane frame allowing 140° steering fitted with safety valves and filters. 6 kW – 96 V motor driven pump.

WHEELS: Nr. 2 rear superelastic 3.55/65-15" - Nr. 4 front superelastic 3.55/65-15"

BOOM: boom fabricated from preformed and welded quality steel plate. Nr.4 telescoping sections: 1 fixed; 3 hydraulically telescoping. Fitted with nylon wear pads adjustable wear pads on the sides.

BOOM CONTROL: Distributor by proportional levers. Motor driven pump 20kW 96V.

LMI: Electronic Load Moment Indicator. Display showing lifted load, max allowed load, tilting percentage, operating radius, angle, telescope and light indicators on the operative mode.

TOTAL WEIGHT: approx. kg. 20.000 **MAX. CAPACITY:** kg. 18.000

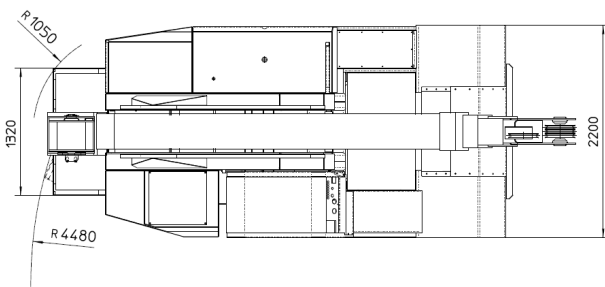
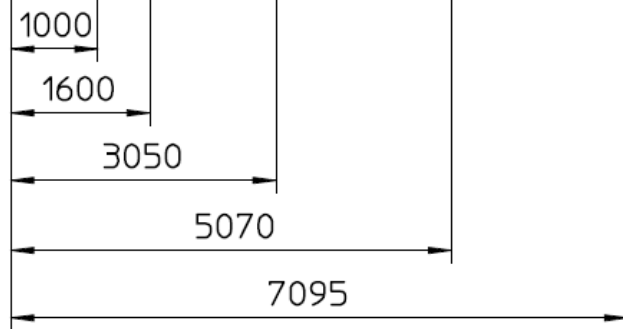
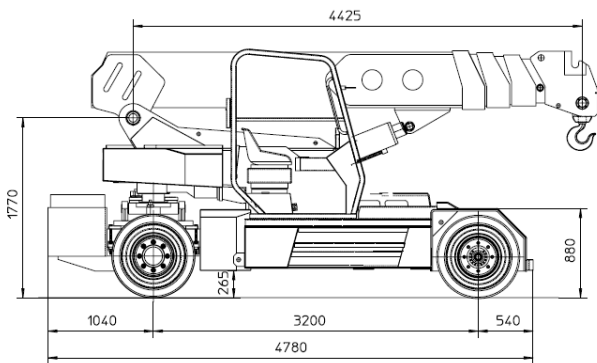
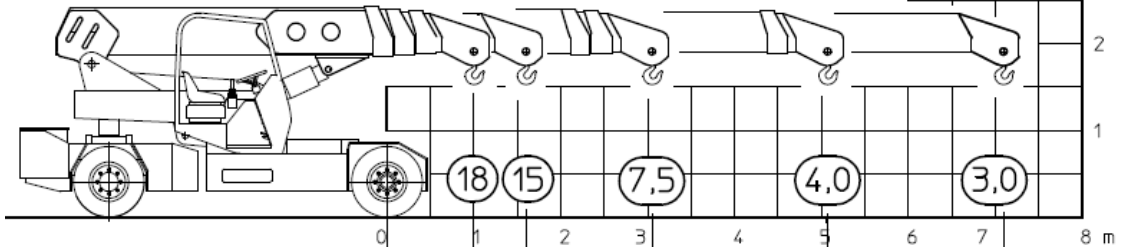
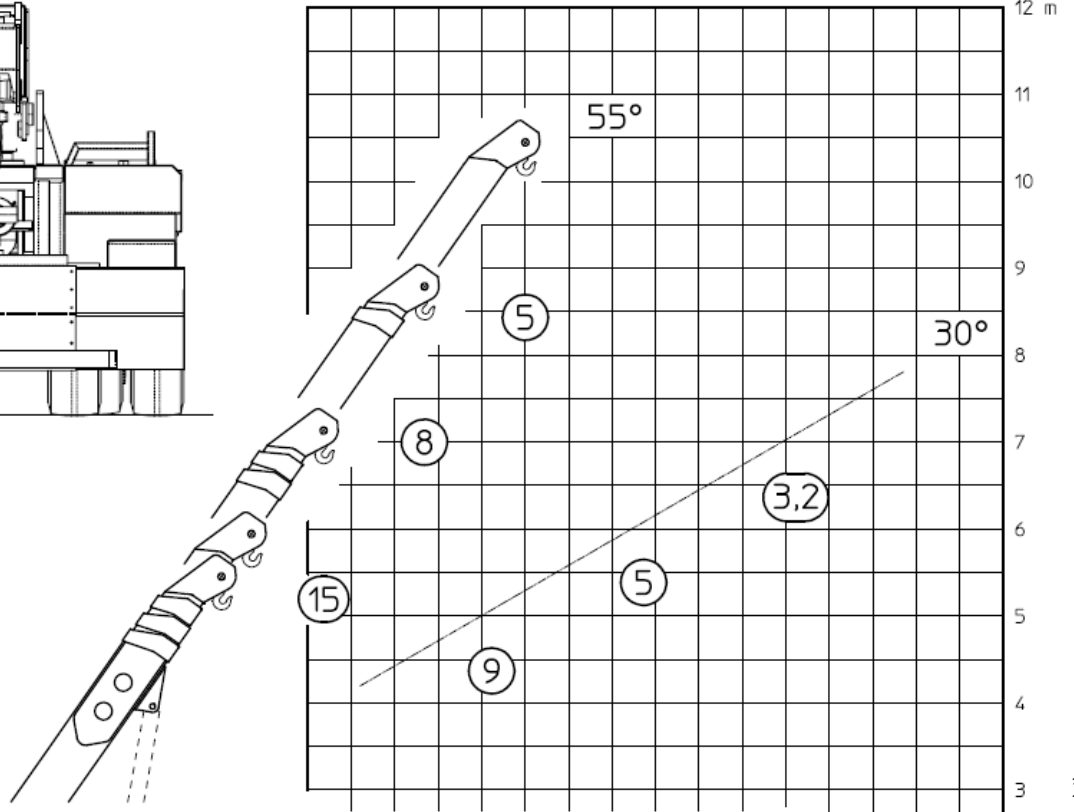
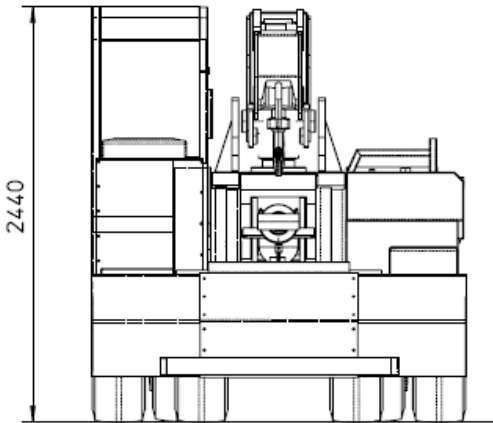
Options on request: hydraulic winch; chain hoists; carry-deck; battery charger (on board and stand-alone); manual and hydraulic jibs; cable remote control; radio remote control; working light; fire extinguisher.



MANITEX VALLA 180 E



The crane applies to the following std.:
 -2006/42/CE
 -UNIEN13000
 -I.S.P.E.S.L.



Data subject to be changed without any previous notice. Pictures may differ from technical description.



Valla – division of CVS Ferrari Srl
 Via Piacenza, 45 – 29010 Calendasco – Piacenza – ITALIA
 Tel. 0039 0523 762025 – 762004 – Fax 0039 0523 760531
 Internet: www.valla.com – email: info@valla.com