

Articulating Cranes

**32027**

Technical Specifications

Material Handling Systems





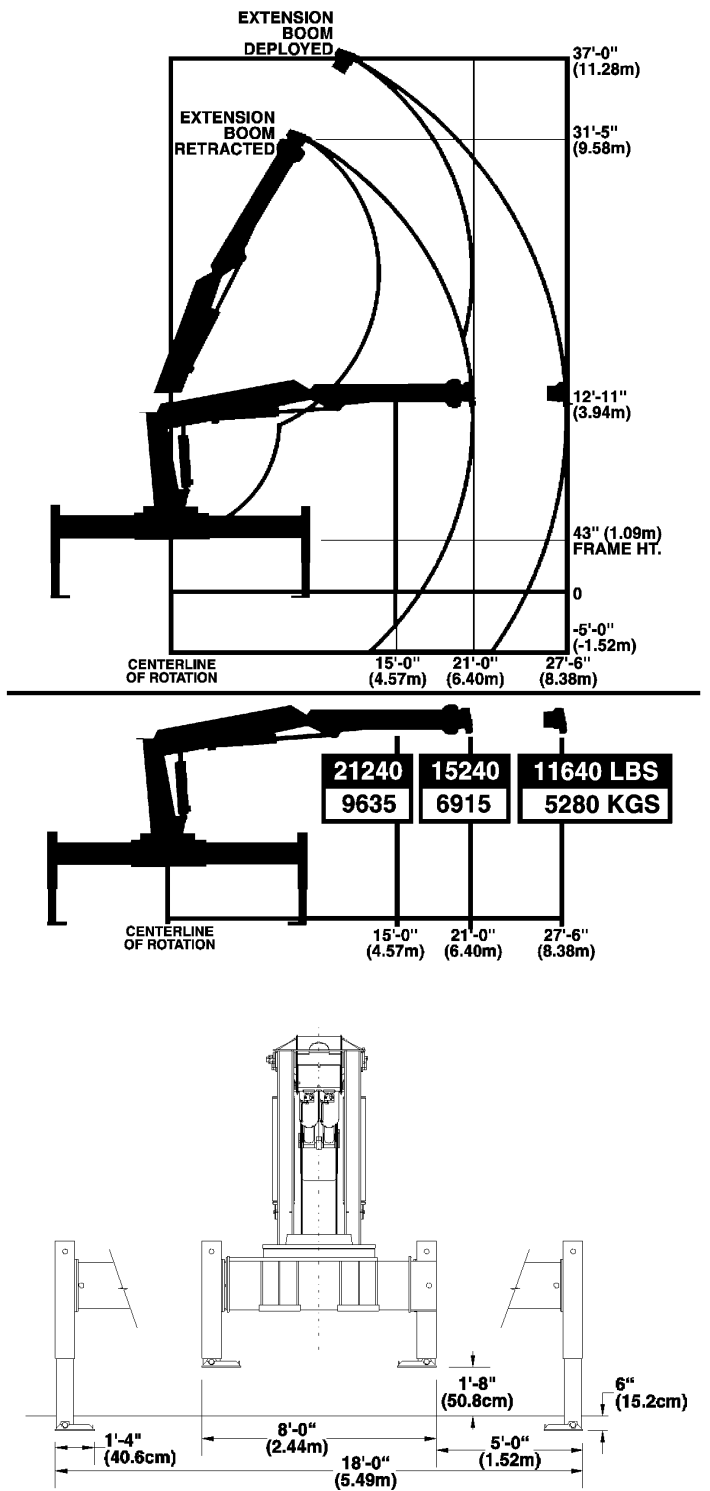
Specifications	1 Hydraulic
<b>Crane Rating</b> (ANSI B30.22)*	320,000 ft-lb (44.3 tm)
<b>Maximum Crane Rating</b> *	320,000 ft-lb (44.3 tm)
<b>Horizontal Reach</b> from centerline of rotation	27'6" (8.4 m)
<b>Hydraulic Extension</b>	78" (2.0 m)
<b>Vertical Reach</b> from mounting surface	33'5" (10.2 m)
from ground/43" frame height	37'0" (11.3 m)
<b>Crane Weight</b>	16,500 lbs. (7485 kg)
<b>Outrigger Span</b> base-mounted	18'0" (5.5 m)
auxiliary (required)	14'0" (4.3 m)
<b>Outrigger Pads</b> auxiliary	16" x 16" (40.6 x 40.6 cm) 14" x 14" (35.6 x 35.6 cm)
<b>Crane Storage Height</b> from mounting surface	9'5" (2.9 m)
from ground/43" frame height	13'0" (4.0 m)
<b>Mounting Space Required**</b>	70" (1.8 m)
<b>Rotational Torque</b>	38,320 ft-lb (5.3 tm)
<b>Optimum Pump Capacity</b>	35 gpm (132.5 L/min)
<b>System Operating Pressure</b>	3,000 psi (207 bar)
<b>Oil Reservoir Capacity</b>	60 U.S. gallons (227 L)
<b>Hook Approach</b> horizontal from centerline of rotation	7'1" (2.2 m)
vertical from mounting surface	7'10" (2.4 m)
<b>Center of Gravity ***</b> horizontal from centerline of rotation	50" (1.3 m)
away from outriggers	
from mounting surface	6'0" (1.8 m)

\* Maximum crane rating (ft-lb) is defined as the rated load (lbs.) which when multiplied by its respective distance (ft.) from centerline of rotation gives the greatest ft-lb value. ANSI B30.22 crane rating (ft-lb) is the rated load (lb) x the respective distance (ft.) from centerline of rotation with all extensions retracted and the inner and outer booms in a horizontal position.

\*\* Mast swing within the confines of the crane base requiring no additional space behind the cab.

\*\*\* Crane in stowed position.

### Capacity Charts



# 32027 Articulating Crane

## Performance Characteristics

<b>Rotation</b>	400°	29 seconds
<b>Inner Boom Elevation</b>	-30° to +70°	28 sec (ext), 22 sec (retract)
<b>Outer Boom Articulation</b>	127°	32 sec (ext), 23 sec (retract)
<b>Extension Boom</b>	78" (2.0 m)	20 sec (ext), 20 sec (retract)
<b>Vertical Outrigger Stroke</b>		
power out outriggers	60" (1.52 m)	8 seconds
power down outriggers	21" (0.5 m)	13 seconds

## Power Source

Load-sensing piston pump and PTO application. Minimum horsepower required is 68 horsepower.

## Cylinder Holding Valves

The holding sides of all standard cylinders are equipped with integral mounted holding or counterbalance valves to prevent sudden cylinder collapse in case of hose or other hydraulic failure. The power-out and power-down outrigger cylinders have positive, pilot-operated holding valves that open only upon command. The counterbalance valve serves several functions. First, it is a holding valve. Second, it is constructed so that it will control the lowering function and allow that motion to be feathered while under load. Finally, if a hose breaks the only oil loss will be that in the hose.

## Rotation System

Rotation of the crane is accomplished through a turntable bearing, powered by two high-torque hydraulic disc-valve motors through two planetary gear boxes. A fail-safe, spring-loaded brake is an integral part of each planetary gear box which provides rotational and parking brake action. Total gear reduction is 99:1.

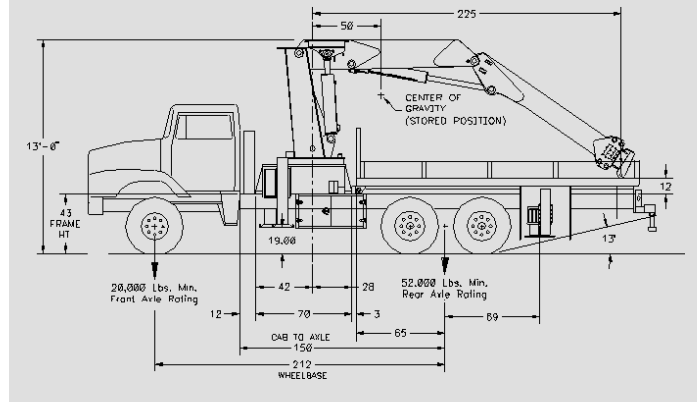
## Hydraulic System

The hydraulic system is a closed-center, load-sensing, standby-pressure system providing 35 gpm (132.5 L/min) optimum oil flow at 3,000 psi (207 bar). Stack-type control valve with radio remote plus single operational control handles located on driver's side of the crane for all lift, telescope and swing functions is standard. Single control lever for each outrigger function, located on the same side as the outrigger, is standard. System includes hydraulic oil reservoir, return-line filter, variable displacement radial piston pump and closed-center, load-sensing control valve

## Selected Weights of Ancillary Equipment

<b>Auxiliary Outriggers</b>	1,770 lbs. (803 kgs)
18' subframe	1,800 lbs. (816 kgs)
pump & PTO	140 lbs. (64 kgs)
mounting hardware	520 lbs. (235 kgs)
oil reservoir	190 lbs. (86 kgs)
oil (60 gallons / 227 L)	420 lbs. (190 kgs)

## Minimum Chassis Specifications



Minimum Chassis Specs	Standard 32027 Crane
<b>Crane Mount</b>	Behind Cab
<b>Crane Working Area</b>	360° (6.3 rad)
<b>Chassis Style</b>	Conventional
<b>Front Axle Rating (GAWR)</b>	20,000 lbs. (9,072 kg)
<b>Rear Axle Rating (GAWR)</b>	52,000 lbs. (2,3587 kg) Tandem Axle
<b>Wheelbase</b>	212" (5,385 mm)
<b>Cab-To-Axle</b>	150" (3,810 mm)
<b>Frame Height From Ground</b>	43" (1,092 mm) max.
<b>Resistance To Bending Moment</b>	4,740,000 in-lb (54,611 kg-m)
Frame Section Modulus	40.45 in <sup>3</sup> (663 cc)
Frame Yield Strength	110,000 psi (758 N/mm <sup>2</sup> )
<b>Min After Frame</b>	140" (3,556 mm)
<b>Chassis Frame Rail Widths</b>	
Outside Dimension	34" (864 mm) min. to 40" (1,016 mm) max.
Inside Dimension	24" (610 mm) min. to 30" (762 mm) max.

To maintain vehicle stability, it will be necessary to provide auxiliary outriggers which have at a minimum 14'0" (4.3 m) span. A subframe/torsion box must be used to tie the auxiliary outriggers to the crane. For each application, contact IMT for a weight distribution and stability analysis.

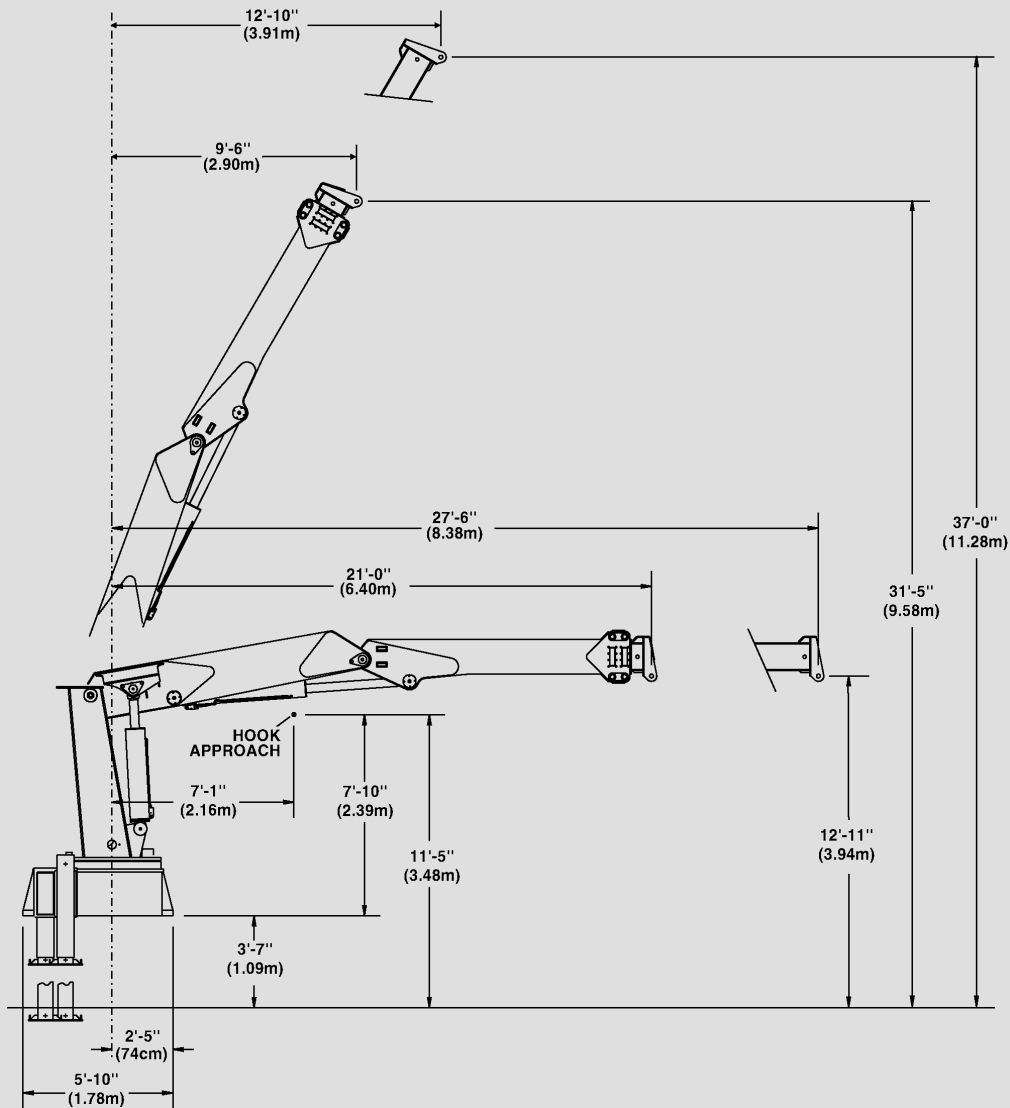
## Notes:

1. GAWR means Gross Axle Weight Rating and is dependent on all components of the vehicle such as axles, tires, wheels, springs, brakes, steering and frame strength meeting the manufacturer's recommendations. Always specify GAWR when purchasing a truck.
2. Minimum axle requirements may increase with use of diesel engines, longer wheelbase or service bodies. Contact the factory for further information.
3. Weight distribution calculations are required to determine final axle loading.
4. All chassis and crane combinations must be stability-tested to ensure stability per ANSI B30.22



# 32027 Articulating Crane

## Geometric Configurations



Iowa Mold Tooling Co., Inc.

500 Highway 18 West  
P.O. Box 189  
Garner, Iowa 50438-0189  
(641) 923-3711  
Fax: (641) 923-6063  
Web Site: [www.imt.com](http://www.imt.com)

(800) 247-5958

### Manufacturer's Limited Warranty Coverage

Products manufactured by IMT are warranted to be free from defects in material and workmanship, under proper use, application and maintenance in accordance with IMT's written recommendations, instructions and specifications as follows:

1. Ninety (90) days: labor on IMT workmanship from the date of shipment to the end user.
2. One (1) year: original IMT parts from the date of shipment to the end user.

IMT reserves the right to change specifications and design without notice.