



ET18KX

FEATURES

- * 4,500 lb. Maximum Lifting Capacity
- * 18,000 ft.-lb. Moment Rating
- * Electric-Hydraulic Power
- * Manual or Hydraulic Boom Extension 8-12 ft.
- * Manual Boom Extension 12-16 ft.
- * Continuous Power Rotation
- * Meets ANSI B30.5 Safety Standards
- * Meets OSHA 1910.180 Requirements

STANDARD EQUIPMENT

- * Capacity Overload Shut-Off System
- * Anti-Two-Blocking System
- * 80 ft. of 5/16" Aircraft-Quality Wire Rope
- * Remote Control Pendant: 25 ft. Cord and Quick Disconnect
- * Snatch Block with Swivel Hook Safety Latch
- * Master Disconnect Switch
- * Battery Cable: 25 ft.

MINIMUM REQUIREMENTS

- * 10,500 lb. GVWR Chassis
- * Outriggers
- * Electric Power Source: 12V DC

LIFTING CAPACITIES	
REACH (FT.)	CAPACITY (LBS.)
4	4,500
8	2,250
12	1,500
16	1,125

OPTIONAL EQUIPMENT

- * Radio Remote Controls
- * Manual Outrigger Packages
- * Mounting Pedestal for Platform Bodies
- * Boom Rests

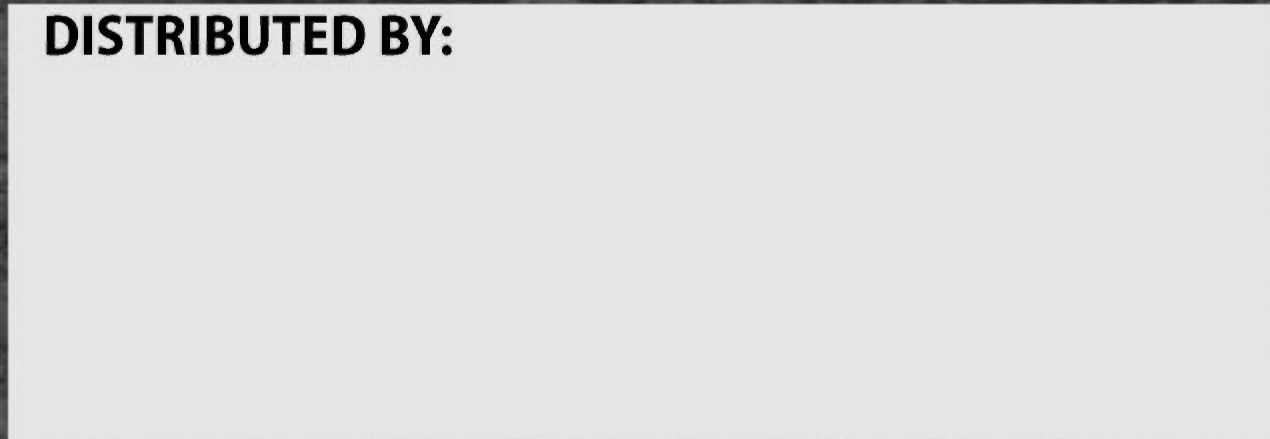
Specifications subject to change without notice.



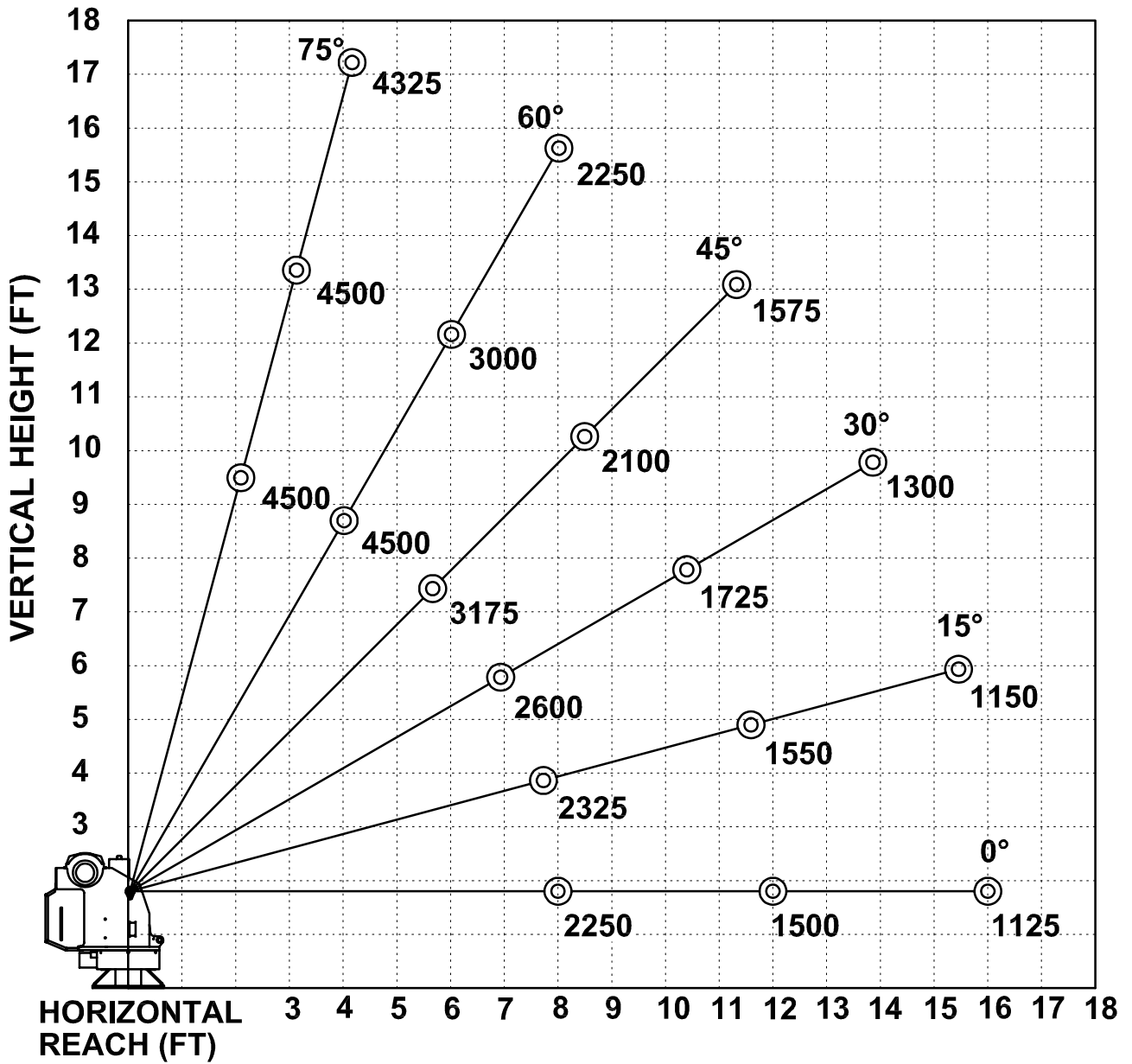
RUGGED. RELIABLE. REAL.

12110 Best Place Cincinnati, OH 45241
 800-226-2238 internetsales@venturo.com
 www.venturo.com

DISTRIBUTED BY:



ET18K(X) - 8-12-16 BOOM MAXIMUM CAPACITY CHART



**MUST USE SNATCH BLOCK
FOR LOADS OF 2250 LBS.
AND GREATER**