



Altec LMAP System

RECOMMENDED FEATURES

- Wheel Chocks
- Fall Protection System (with platform)
- Radio Remote Control (with platform)

OPTIONS

- 1-Piece 31 ft (9.4 m) Jib
- 2-Man Steel Platform
- Climate-Controlled Enclosed Cab
- Load Blocks for Multiple Parts of Line
- Hydraulic Tool Circuit at Tail Shelf
- Pintle Hitch
- Hot Shift Power Take-Off
- Utility Tool Boxes
- Rotation Resistant Wire Rope
- Winch Control at Load Hook Stow Point
- Glide Swing
- Auxiliary Winch, 5000 lbs (2250 kg) Capacity

STANDARD SAFETY FEATURES

- Altec LMAP (Load Moment & Area Protection) System
 - Rated Capacity Limiter
 - Displays: Boom Length, Boom Angle, Load on Hook, Percent of Rated Capacity
 - Electronic Working Area Definition
 - Operator Defined Audible Alarm Set-Points for Boom Angle, Length and Rotational Position
- Outrigger Boom Interlock System
- Outrigger Motion Alarm
- Back-up Alarm
- Emergency Stop at Operator Controls
- Winch Drum Rotation Indicator
- Anti-Two Block Device
- Front Bumper Outrigger
- Altec Opti-View® Riding Seat Control Station

CRANE SPECIFICATIONS

- 70,000 lb (31,759 kg) Maximum Lifting Capacity
- 127 ft (38.7 m) 5-Section Non-Insulated Boom
- 137 ft (41.8 m) Maximum Sheave Height
- Stowed Travel Height of 12.9 ft (3.9 m)
- Vehicle Travel Length of 38 ft (11.6 m)
- Sequential Out-and-Down Outriggers
 - Full Span 24 ft (7.3 m)
 - Mid Span 15.75 ft (4.8 m)
 - Short Span 8.17 ft (2.5 m)
- Hydraulic Pilot-Operated Control System
- Continuous Rotation
- Hydraulic Oil Cooling System
- Life Cycle Tested for Reliability

CHASSIS REQUIREMENTS

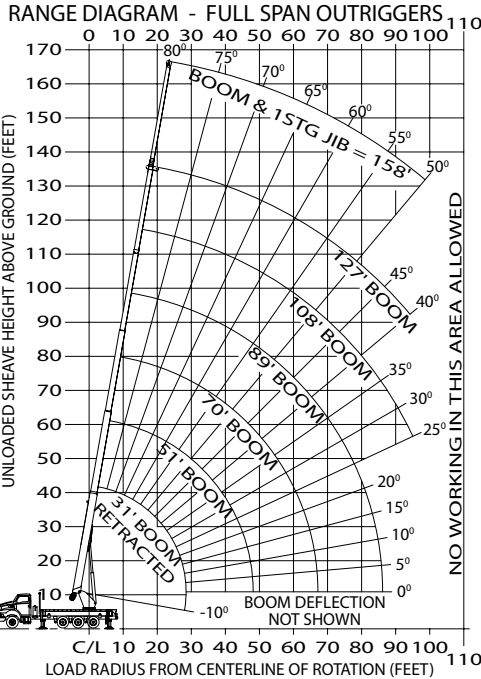
	Option 1 Rear Tandem with Pusher		Option 2 Rear Tri-Drive	
Gross Vehicle Weight Rating	70,000 lb	(31,750 kg)	70,000 lb	(31,750 kg)
Front Axle Weight Rating	20,000 lb	(9070 kg)	20,000 lb	(9070 kg)
Rear Axle Combination Rating	40,000 + 17,500 lb	(18,140 + 7940 kg)	60,000 lb	(27,220 kg)
Cab-to-Axle	192 in	(4877 mm)	177 in	(4496 mm)
Wheel Base	262 in	(6655 mm)	251 in	(6375 mm)

The CA and WB dimensions are approximate. The new Federal Exhaust Emission Standard may affect these dimensions. Confirm overall configuration before ordering chassis.

Altec AC35-127S Capacities



MODEL AC35-127S EXAMPLE CAPACITIES

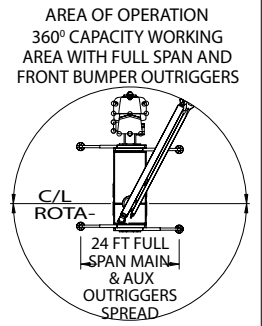


BOOM LOAD CAPACITIES IN LBS. WITH FULL SPAN OUTRIGGERS (24 FT)

LOAD RADIUS (FT)	31 FT BOOM LBS	51 FT BOOM LBS	70 FT BOOM LBS	89 FT BOOM LBS	108 FT BOOM LBS	127 FT BOOM LBS
6	73 70000					
8	69 60700					
10	65 52300	76 35000				
12	60 46100	74 33000				
15	56 38000	70 31000	76 30000			
20	45 28000	64 24500	72 23000	77 17000		
25	28 21000	57 19500	68 19000	73 16500	77 14000	
30		50 16000	63 14500	70 14000	75 12000	77 8400
35		42 13200	58 12700	66 11000	72 10000	75 7900
40		33 10600	53 10200	62 9100	69 8500	73 7400
45		20 8500	47 8850	59 7500	66 7100	71 6800
50			41 7500	55 6700	63 6100	69 6000
55			34 6200	51 6200	60 5100	66 5100
60			26 5100	47 5300	56 4650	63 4500
65			14 4100	43 4400	53 4300	60 3850
70				37 3500	49 3600	58 3300
75				30 2850	46 3000	55 2850
80				23 2250	41 2400	52 2450
85				9 1750	37 1900	49 2000
90					32 1450	46 1600
95					26 1050	42 1150
100					22 750	37 750
	0 15500	0 6000	0 2700	0 1350	NO CAPACITY	NO CAPACITY
	500	350	250	200	150	150

NOTE: RATINGS ABOVE THE HEAVY LINE ARE BASED ON STRUCTURAL COMPETENCE AND NOT ON MACHINE STABILITY

0° BOOM CAPACITIES
STOWED JIB LOAD DEDUCTIONS



- DEDUCTIONS FROM RATED LOADS FOR HANDLING DEVICES
- OVERHAUL BALL: 230 LBS
- 1-SHEAVE LOADBLOCK: 360 LBS
- 2-SHEAVE LOADBLOCK: 500 LBS
- 3-SHEAVE LOADBLOCK: 600 LBS

JIB LOAD CAPACITIES (LBS) FOR ALL BOOM LENGTHS
JIB CAPACITIES FOR FULL SPAN OUTRIGGERS (24 FT)

LOADED BOOM ANGLE	50°*	55°	60°	65°	70°	75°	80°
1 STAGE 31 FT JIB	700	1250	1900	2600	3100	3400	3900

* DO NOT OPERATE JIB BELOW THIS ANGLE UNLESS BOOM IS FULLY RETRACTED.

<p>OPERATORS AIDS MUST BE IN GOOD OPERATING CONDITION BEFORE OPERATING CRANE. REFER TO OWNERS MANUAL.</p> <p>KEEP AT LEAST 3 WRAPS OF LOADLINE ON DRUM AT ALL TIMES.</p> <p>USE ONLY 5/8" DIAMETER IWRC OR ROTATION RESISTANT WIRE ROPE WITH 45,400 LBS. MIN. BREAKING STRENGTH ON THIS MACHINE.</p>		1 PART LOAD LINE	2 PART LOAD LINE	3 PART LOAD LINE	4 PART LOAD LINE	5 PART LOAD LINE	6 PART LOAD LINE
		LOADS UP TO	LOADS UP TO	LOADS UP TO	LOADS UP TO	LOADS UP TO	LOADS UP TO
IWRC XXIP WIRE ROPE		12,971 LBS.	25,942 LBS.	38,913 LBS.	51,884 LBS.	64,855 LBS.	70,000 LBS.
ROTATION RESISTANT WIRE ROPE		9,080 LBS.	18,160 LBS.	27,240 LBS.	36,320 LBS.	45,400 LBS.	54,480 LBS.
MAXIMUM BOOM LENGTH AT MAXIMUM ELEVATION WITH RIGGING SHOWN TO REACH THE GROUND		127 FT BOOM	119 FT BOOM	87 FT BOOM	68 FT BOOM	55 FT BOOM	46 FT BOOM
WINCH		LIFTS AND SPEEDS					
5/8" DIAMETER IWRC XXIP CABLE SUPPLIED	STANDARD PLANETARY WINCH HIGH SPEED	6170 LBS. 298 FT/MIN	12,340 LBS. 149 FT/MIN	18,510 LBS. 99 FT/MIN	24,680 LBS. 74 FT/MIN	30,850 LBS. 59 FT/MIN	37,020 LBS. 49 FT/MIN
	STANDARD PLANETARY WINCH LOW SPEED	12340 LBS. 149 FT/MIN	24,680 LBS. 74 FT/MIN	37,020 LBS. 49 FT/MIN	49,360 LBS. 37 FT/MIN	61,700 LBS. 29 FT/MIN	70,000 LBS. 24 FT/MIN
ALL WINCH PULLS AND SPEEDS IN THIS CHART ARE SHOWN ON THE 3RD LAYER. WINCH LINE PULLS WOULD INCREASE ON THE FIRST AND SECOND LAYERS. WINCH LINE SPEED WOULD DECREASE ON THE FIRST AND SECOND LAYERS. WINCH LINE PULLS MAY BE LIMITED BY THE WINCH CAPACITY OF 10,439 LBS FULL DRUM OR ANSI CABLE SAFETY LIMITS SHOWN IN CHART FOR IWRC XXIP AND ROTATION RESISTANT WIRE ROPES.							

- CAUTION:**
- Load ratings shown are maximum allowable loads with the crane mounted on an Altec-approved chassis.
 - Loaded boom angles at specified boom lengths give only an approximation of the operating radius. The boom angle before loading should be greater to account for deflections. Do not exceed the operating radius for rated loads.
 - When between listed lengths for radii, always use the smallest of values shown. Capacities for the 31 ft. boom length must only be lifted with boom fully retracted.
 - Load ratings are based on freely suspended loads with the crane properly set-up on outriggers, with the machine leveled and standing on firm uniform supporting surface.
 - Actual working capacities depend on supporting surfaces, wind and other factors affecting stability such as hazardous surroundings, experience of personnel, and proper handling.
 - Weights of load block, stowed jib, or other accessories must be deducted from the rated capacities shown.



For Service: 1-877-GO-ALTEC

For Sales: 1-866-966-2969

Altec Cranes are supported by service centers and over 115 mobile service technicians positioned across North America, seven days a week, 24 hours a day.

United States:

Alabama Service Center
1730 Vanderbilt Road
Birmingham, AL 35234

Arizona Service Center
2420 South 16th Avenue
Phoenix, AZ 85007

California Service Center (Northern)
325 Industrial Way
Dixon, CA 95620

California Service Center (Southern)
2882 Pomona Boulevard
Pomona, CA 91766

Colorado Service Center
641 Telluride Street
Aurora, CO 80011

Florida Service Center
2570 Old Okeechobee Road
West Palm Beach, FL 33409

Georgia Service Center
287 First Street
Forest Park, GA 30297

Indiana Service Center
5201 West 84th Street
Indianapolis, IN 46268

Kentucky Service Center
200 Altec Drive
Elizabethtown, KY 42701

Maryland Service Center
1434 Hughes Ford Road
Frederick, MD 21701

Massachusetts Service Center
28 Wales Street
Millbury, MA 01527

Missouri Service Center
2106 S. Riverside Road
St. Joseph, MO 64507

North Carolina Service Center
1550 Aerial Avenue
Credmoor, NC 27522

Ohio Service Center
1236 Township Road 1175
Ashland, OH 44805

Oregon Service Center
13817 NE Sandy Boulevard
Portland, OR 97230

Pennsylvania Service Center
250 Laird Street
Plains, PA 18705

Texas Service Center
1001 Solon Road
Waxahachie, TX 75156

Virginia Service Center
325 South Center Drive
Daleville, VA 24083

Canada:

British Columbia Service Center
12352 84th Avenue
Surrey, BC V3W 0J5

Manitoba Service Center
57 Durand Road
Winnipeg, Manitoba R2J 3T1

Ontario Service Center
831 Nipissing Road
Milton, Ontario L9T 4Z4



Vehicle Travel Height of 12.9 ft (3.9 m)



Optional 2-Man Platform

Altec Industries, Inc.

325 South Center Drive
Daleville, VA 24083
1-540-992-5300



Manufacturing and Service Facilities Located
Throughout the United States and Canada

www.altec.com