

Valla



25 E



Electric battery operated Mobile Crane Max. Capacity **Kg.2.500**



Valla

OUTREACH (mm)	CAPACITY (kg)
1.000	1.550
1.500	1.000
2.500	500

TECHNICAL DATA

CRANE FRAME: Three-wheelers frame fabricated from preformed and welded steel plate with built-in counterweight and, for maintenance purposes, removable counterweight .

TRACTION: by AC 3kw 48V reversible electric motor, controlled by inverter, electro magnetic control on disk brake.

BATTERY: 48V 200Ah battery, battery meter on dashboard.

DRIVE: by 180° steering helm. Steering 700W 48V electric motor electronically controlled. Complete with safety device on backward.

WHEELS: Nr. 1 rear cushion 305x135 e Nr. 2 front 18x7-R8 superelastic.

BOOM: three elements boom (1 fixed and 2 hydraulically telescoping section) with sequential hydraulic telescope by double internal cylinder fitted with nylon wear pads. Adjustable wear pads on the sides.

BOOM CONTROL: by electronic proportional joystick distributor. 4 kW 48V motor pump.

LMI: Electronic Load Moment Indicator. Display showing lifted load, max allowed load, tilting percentage, operating radius, angle, telescope and light indicators on the operative mode.

TOTAL WEIGHT: approx. kg. 2.200

MAX. CAPACITY: kg. 2.500

Options on request: hydraulic winch; special oversized hydraulic winch; chain hoists; carry-deck; battery charger (on board and stand-alone); manual and hydraulic jibs; cable remote control; radio remote control; low temperatures kit; working light.



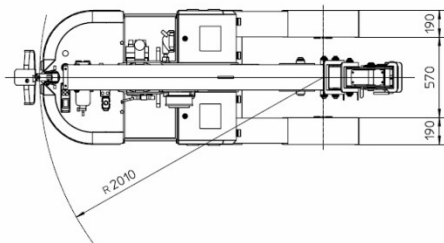
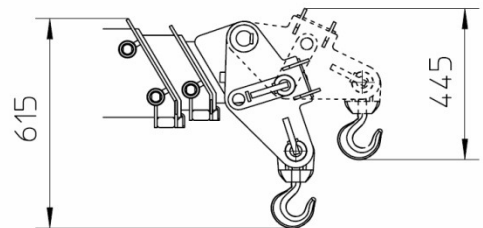
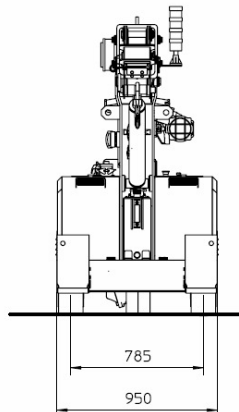
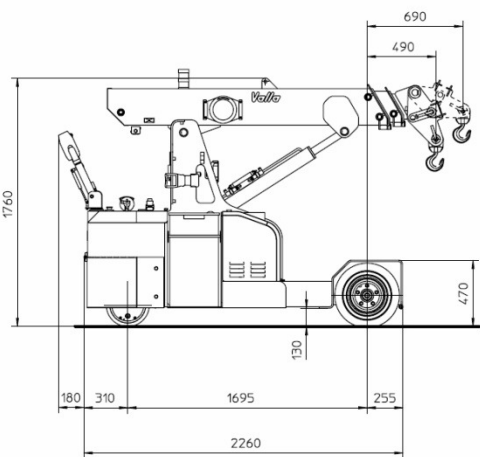
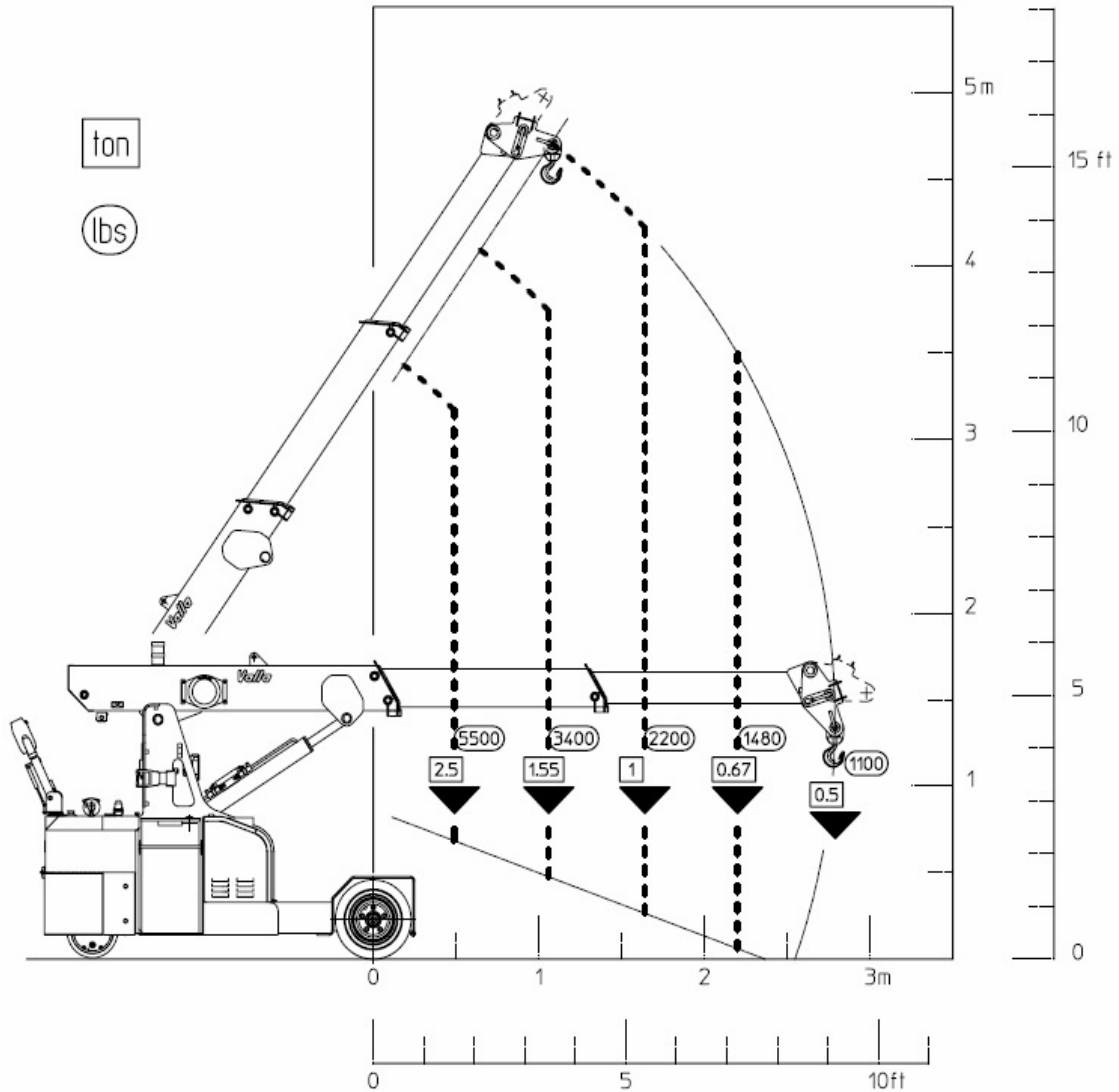
Valla



25 E



The VALLA mobile crane mod. 25 E
 complies with the following standards:
 -2006/42/CE
 -UNIEN13000
 -I.S.P.E.S.L.



Valla S.p.A.

Via Piacenza, 45 – 29010 Calendasco – Piacenza – ITALIA
 Tel. 0039 0523 762025 – 762004 – Fax 0039 0523 760531
 Internet: www.valla.com – email: info@valla.com

Data subject to be changed without any previous notice. Pictures may differ from technical description.