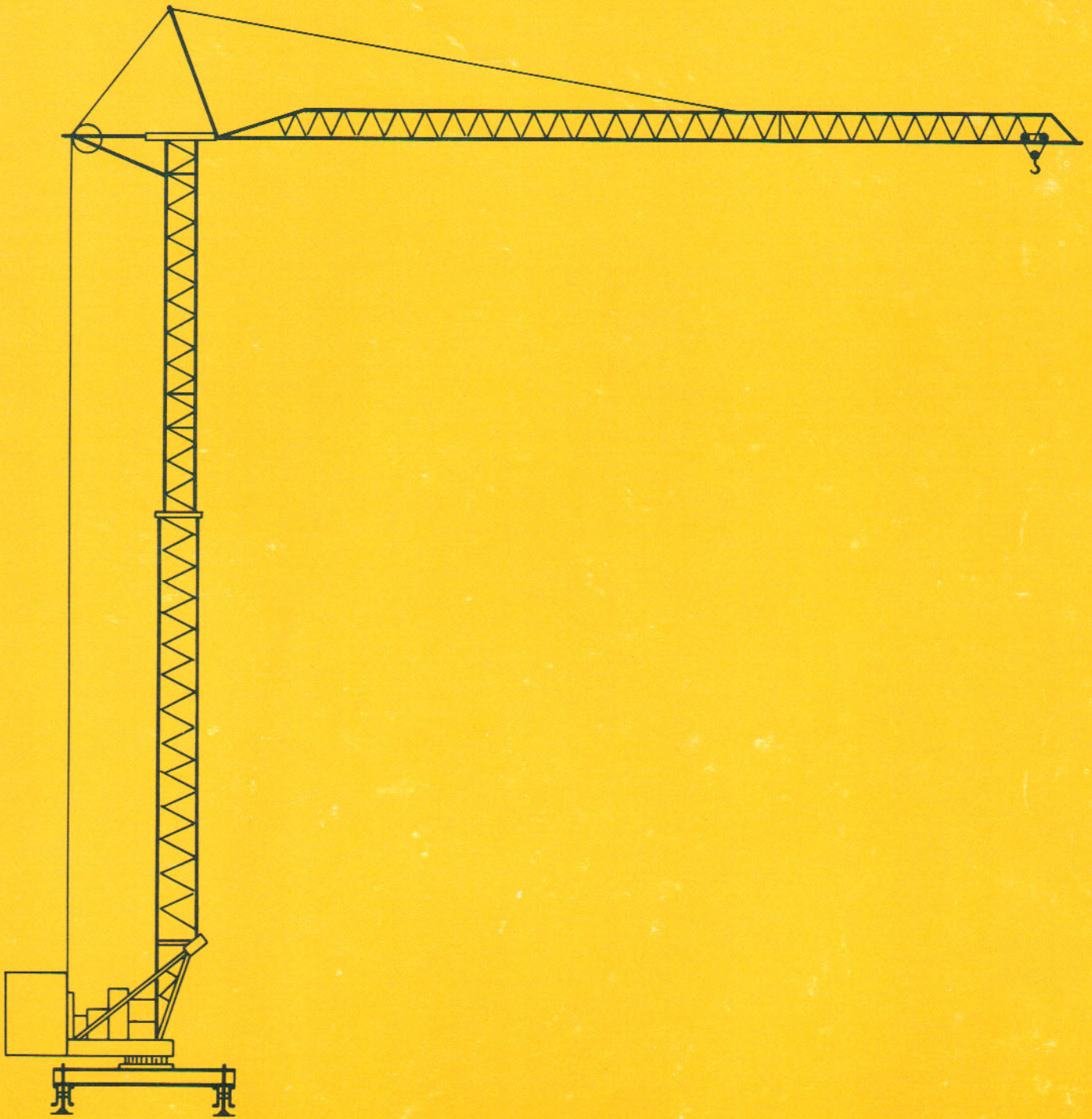


GMR 15.50



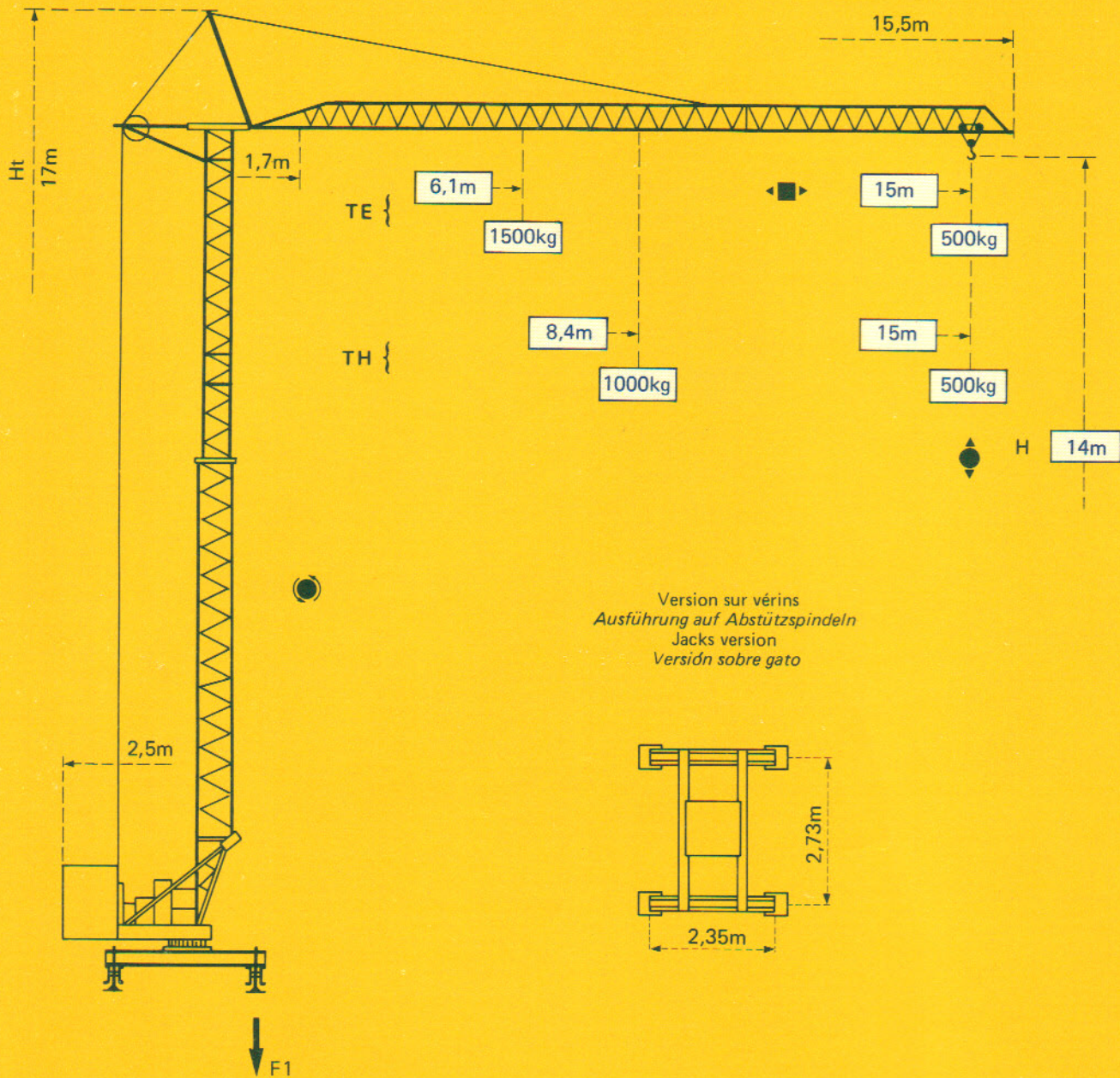
GMR 15.50

Potain



Potain GMR 15.50

Cotes Abmessungen Dimensions Dimensiones



F1 = Réactions Eckdrücke Reactions Reacciones

F1	● 51 kN	■ 26 kN
	3 t	

- En service
- Hors service

A vide sans lest ni train de transport, avec flèche et hauteur maximum.

- In Betrieb
- Ausser Betrieb

Ohne Last, Ballast und Transportachse, mit Maximalausleger und Maximalhöhe.


- In service
- Out of service

Without load, ballast or transport axles, with maximum jib and maximum height.

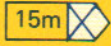
- En servicio
- Fuera de servicio

Sin carga, sin lastre, ni tren de transporte, flecha y altura maximas.

Courbes de charges Lastkurven Load curves Curvas de cargas

 Flèche Ausleger Jib Flecha

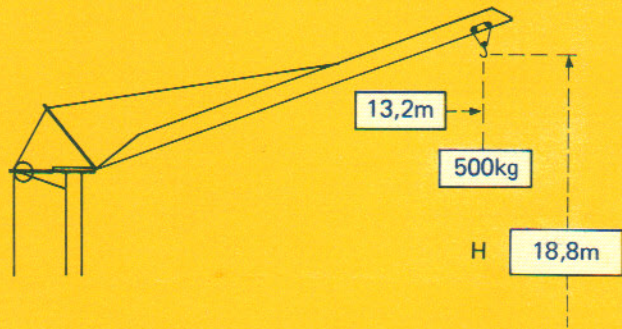
1,7	→ 6,1	7	8	9	10	11	12	13	14	15	m
TE	1500	1260	1070	920	810	720	650	590	540	500	kg

 15m

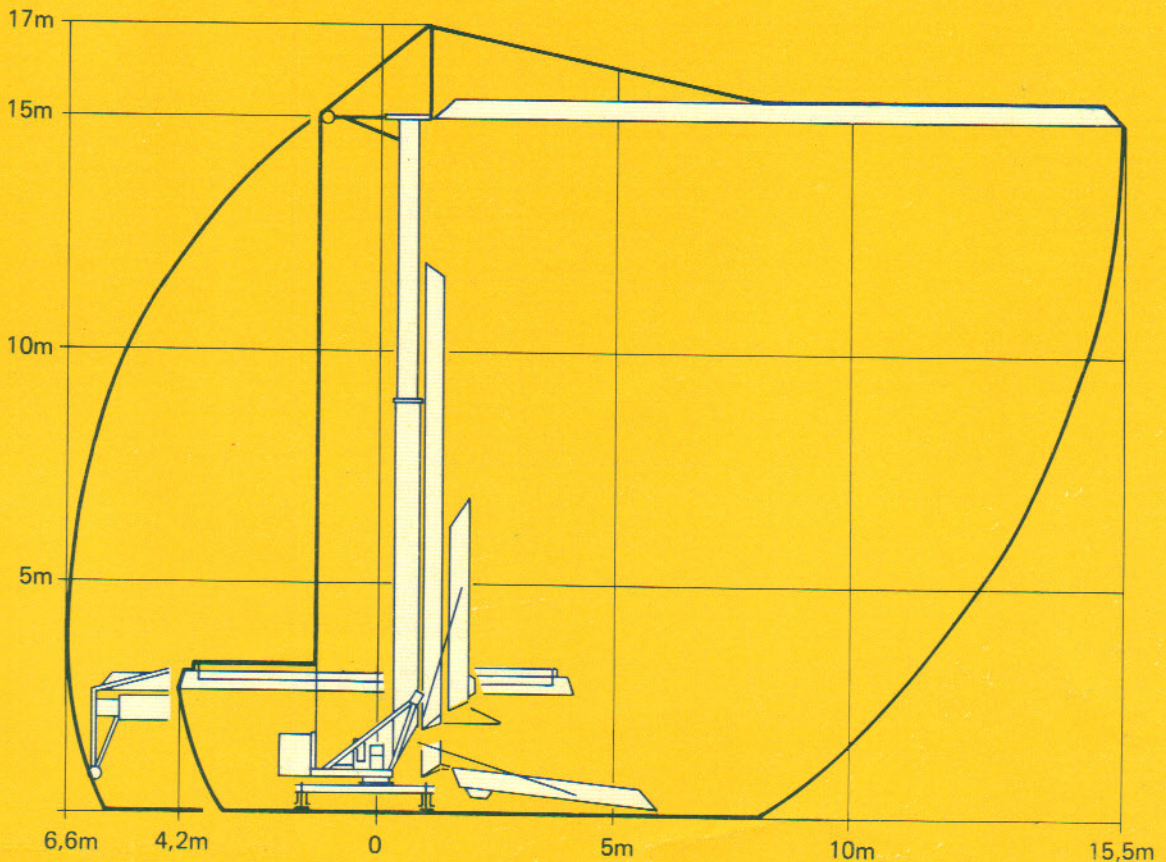
	1,7	→ 8,4	9	10	11	12	13	14	15	m
TH		1000	920	810	720	650	590	540	500	kg

Flèche relevée Ausleger in Steilstellung Raised jib Flecha izada














Chariot bloqué
(version standard)
Verriegelte Laufkatze
(Standardausführung)
Trolley locked
(standard crane)
Carro bloqueado
(version standard)



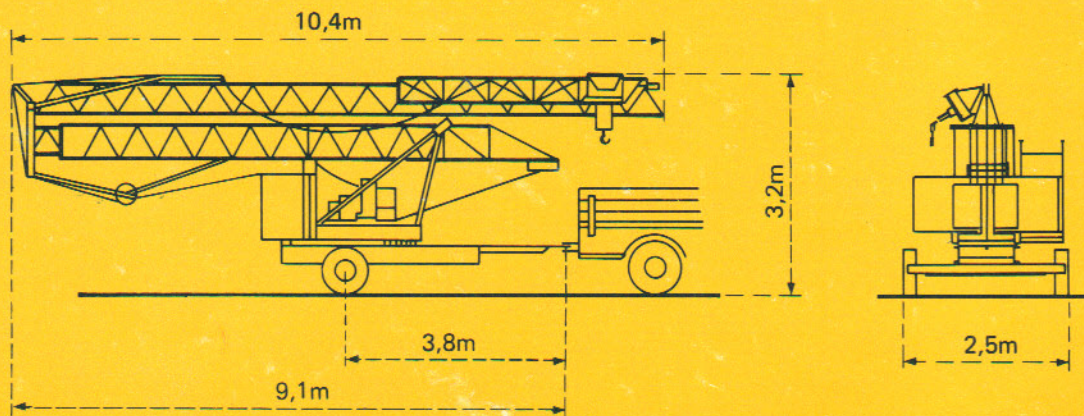
Montage Montage Erection Montaje



Mécanismes *Antriebe* Mechanisms *Mecanismos*

					m/min.	kg	ch-PS hp	kW
Levage Heben Hoisting Elevación	TH	 810 A			12,5	1000	8	5,9
					25	500		
	TE				12,5	1500	4	3
					25	500		
Distribution - <i>Katzfahren</i> Trolleying - <i>Distribución</i>				25		0,5	0,37	
Orientation - <i>Schwenken</i> Slewing - <i>Orientación</i>				1 tr/min U/min-rpm		0,5	0,37	
Puissance électrique nécessaire <i>Anschlusswert</i> Necessary electric power <i>Potencia eléctrica necesaria</i>	TE	220 V 380 V 50 HZ 	Réseau - <i>Netzstrom</i> - Mains supply - <i>Red</i>				8 kVA	
			Groupe électrogène - <i>Stromaggregat</i> Generator set - <i>Grupo electrogeno</i>				Nous consulter <i>Auf Anfrage</i> Consult us <i>Consultarnos</i>	

Transport *Transport* Transport *Transporte*



Version tractée derrière camion
Ausführung als LKW-Anhänger
 Lorry towed version
Versión remolcable detrás de un camión

 **Potain**

18, rue de Charbonnières B.P 173 - F 69130 ECULLY
 Tél. (7) 833.81.81 Téléx 330 179
 EXPORT. 89 Av. du Pdt Roosevelt - CHEVILLY - LARUE
 F 94150 RUNGIS - Tél. (1) 687.22.23 - Téléx 270001
 POTAIN GmbH - D 6082 MÖRFELDEN - WALLDORF
 Nordendstr. 79-87 - Postfach 420 - Tel. (6 105) 5091 - Telex 4 185745
 POTAIN SUISSE S.A. - CH 5115 MÖRIKEN WILDEGG
 Tel. 64.53.19.91 - Telex 68294

Modifications réservées - Änderungen vorbehalten - Subject to modification - Modificaciones reservadas
 Ref. 8036 EXY 1
 Printed in France