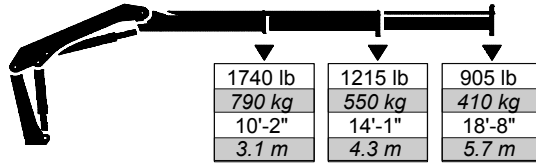


2.5/18

Articulating Crane Technical Specifications

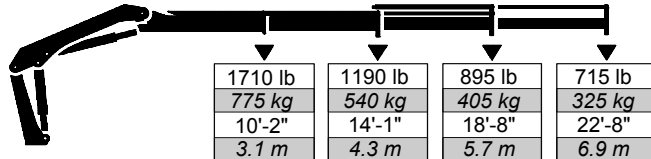
2.5/18 Lifting Capacities

2.5/18 - 2 Hydraulic



1740 lb 790 kg	1215 lb 550 kg	905 lb 410 kg
10'-2"	14'-1"	18'-8"
3.1 m	4.3 m	5.7 m

2.5/18 - 3 Hydraulic



1710 lb 775 kg	1190 lb 540 kg	895 lb 405 kg	715 lb 325 kg
10'-2"	14'-1"	18'-8"	22'-8"
3.1 m	4.3 m	5.7 m	6.9 m



Note: Crane appearance subject to change.

2.5/18 Specifications

Outrigger Pad Diameter	5.5" (140 mm)
Crane Storage Height	5' 0" (1527 mm)
Mounting Space	1' 9" (538 mm)
Rotational Torque	2820 ft-lb (390 kgm)
Rotation	370°
Optimum Pump Performance	3.2 gpm (12 l/min)
System Pressure	2755 psi (190 bar)
Oil Reservoir Capacity	3.96 gal (15 l)
Outrigger Extension Span	
Standard (man. out / hyd. down)	9' 10" (3000 mm)
Weight	130 lb (59 kg)
Wide (man. out / hyd. down)	12' 10" (3900 mm)
Weight	130 lb (59 kg)

Minimum Chassis Specifications

Front Axle Rating (GAWR)	5000 lb (2270 kg)
Rear Axle Rating (GAWR)	7000 lb (3175 kg)
Resistance To Bending Moment	270,000 in-lb (31,105 kg-m)

2.5/18

2 - Hydraulic

3 - Hydraulic

Crane Rating*	18,085 ft-lb (2.5 tm)	17,360 ft-lb (2.4 tm)
Maximum Horizontal Reach	18' 4" (5.6 m)	23' 0" (7.0 m)
Maximum Vertical Reach	23' 10" (7.3 m)	28' 1" (8.6 m)
Maximum Capacity	1740 lb (790 kg)	1710 lb (775 kg)
Max Cap @ Max Reach	905 lb (410 kg)	715 lb (325 kg)
Crane Weight (Standard)**	850 lb (386 kg)	930 lb (421 kg)
Crane Weight (Wide)**	895 lb (405 kg)	970 lb (440 kg)
Hook Approach		
Vertical	6' 10" (2.08 m)	6' 7" (2.01 m)
Horizontal	3' 1" (0.94 m)	3' 3" (1.00 m)
Center of Gravity - Stored		
Vertical	1' 6" (465 mm)	1' 7" (475 mm)
Horizontal (C/L Rot to Bridge)	9.6" (245 mm)	9.6" (245 mm)

* Crane rating (ft-lb) is the rated load (lb) multiplied by the respective distance (ft) from centerline of rotation with all extensions retracted and the inner and outer booms in a horizontal position, per ANSI B30.22.

** Crane weight does not include outriggers.

© 2010 Iowa Mold Tooling Co., Inc. All Rights Reserved.

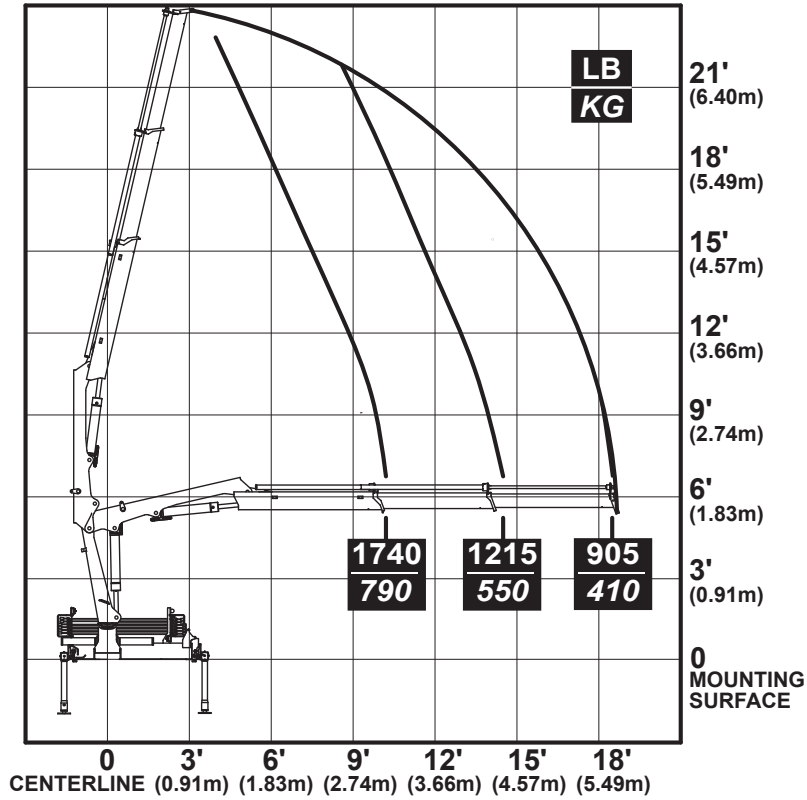


An Oshkosh Corporation Company

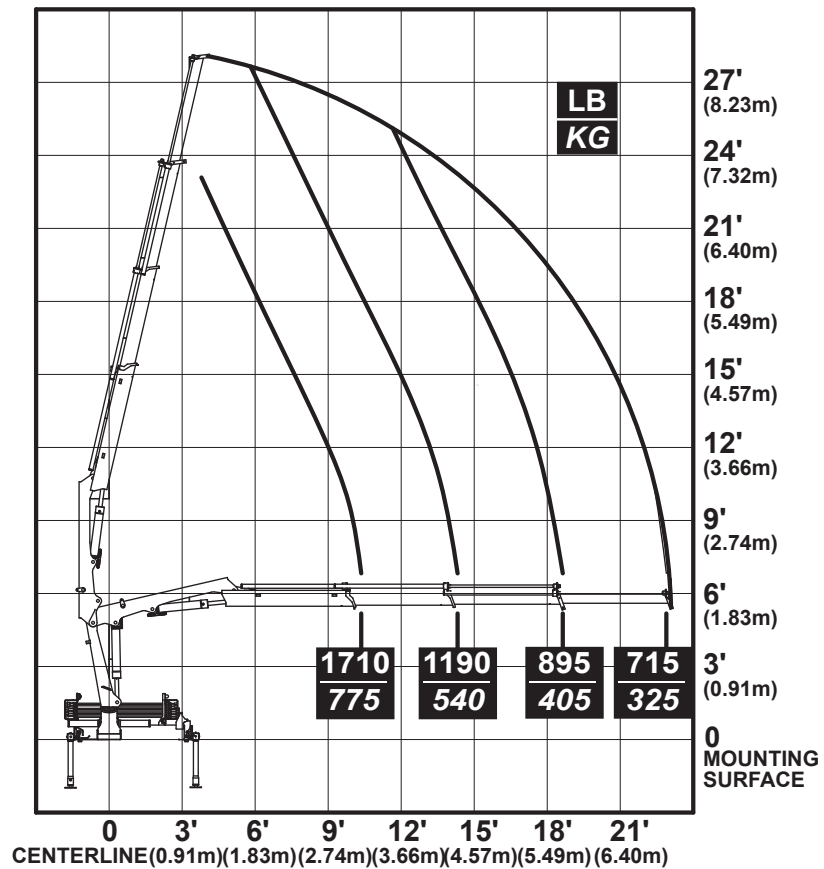
2.5/18 Articulating Crane

Capacity Charts

2-Hydraulic



3-Hydraulic

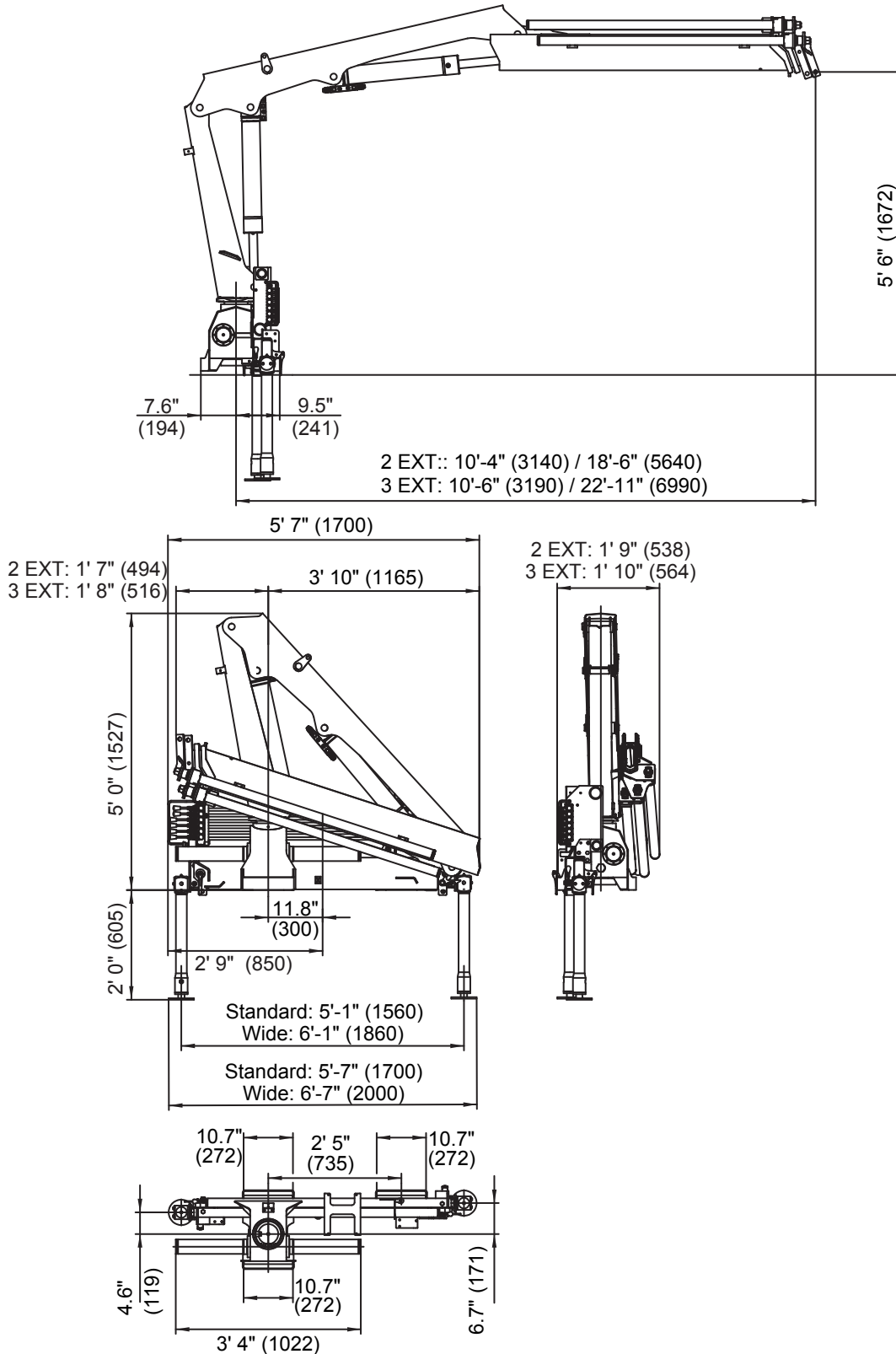


2.5/18 Articulating Crane



An Oshkosh Corporation Company

Geometric Configurations



Iowa Mold Tooling Co., Inc.

500 Highway 18 West P.O. Box 189 Garner, Iowa 50438-0189
 800-247-5958 641-923-3711 Fax: 641-923-6063 www.imt.com