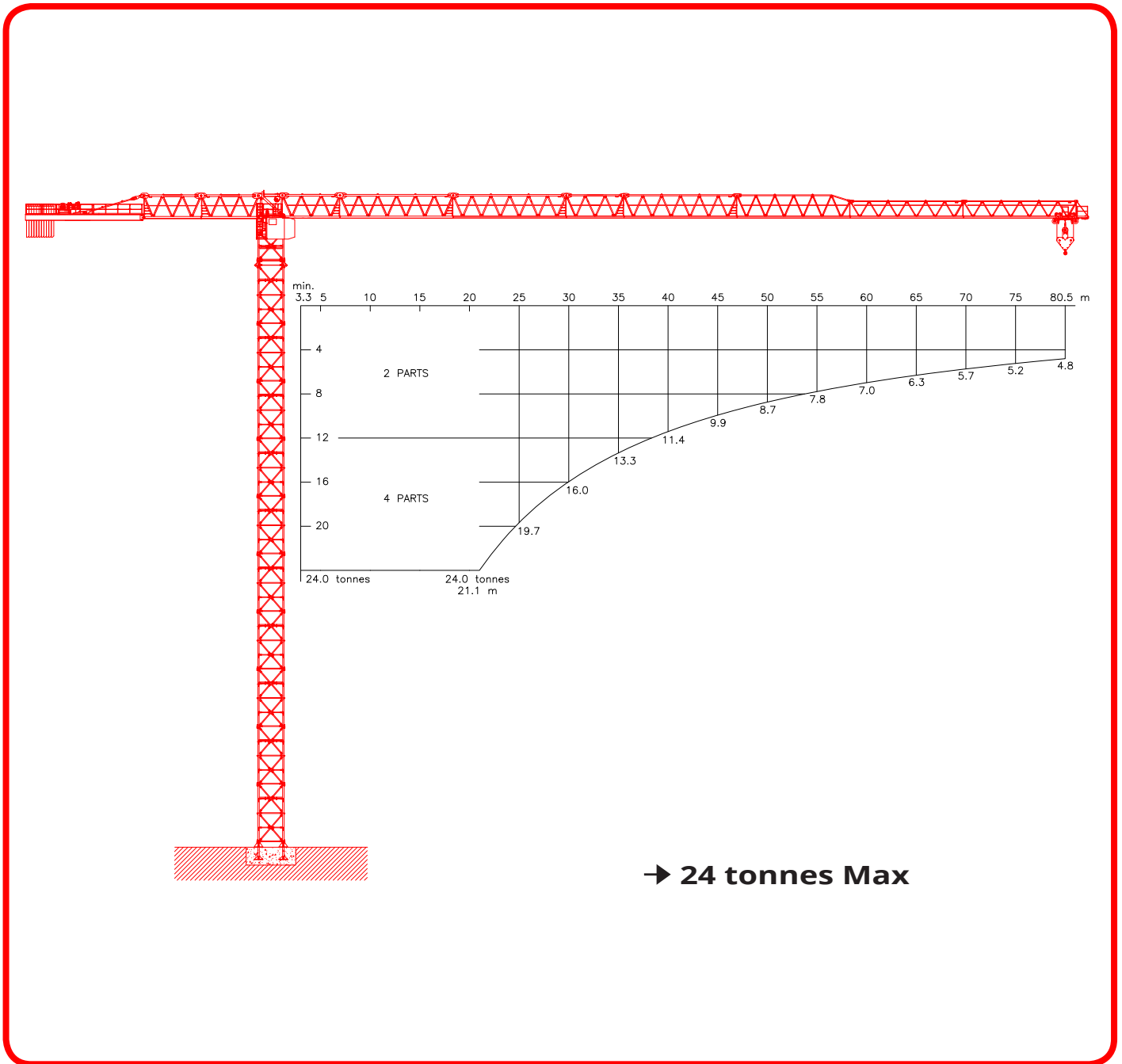




# KROLL CRANES



F.E.M 1.001-HC1/A3/E3

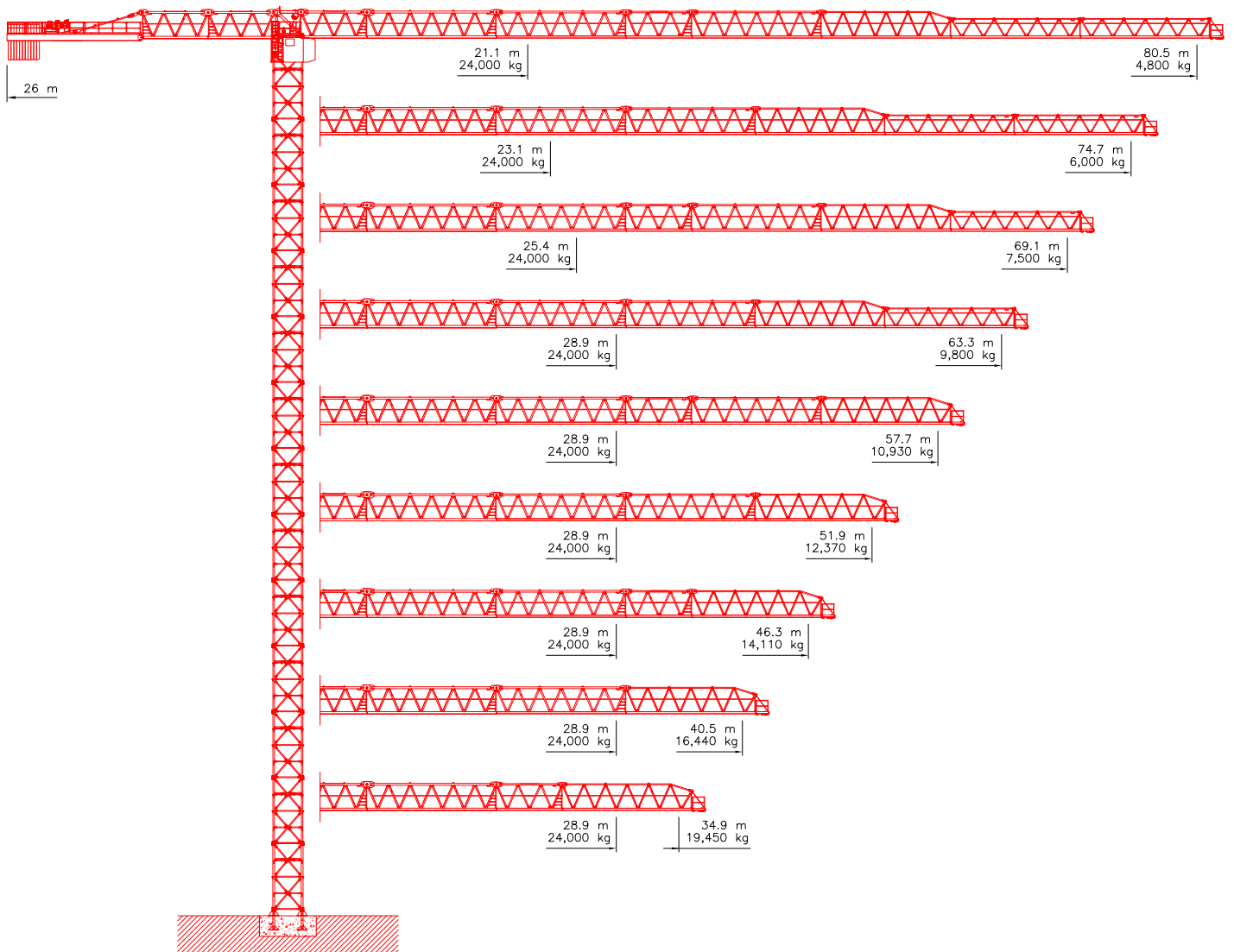


## FLAT TOP TOWER CRANE

# K630F

24 tonnes Max



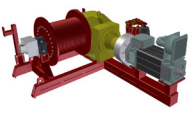
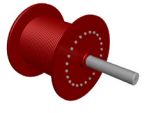
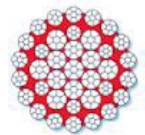

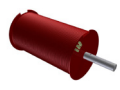
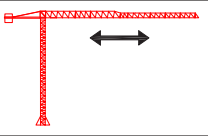


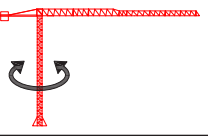


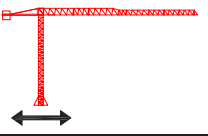
# JIB CONFIGURATIONS





# LOAD CHARTS

| Radius | Jib Length |         |         |         |         |         |         |         |         |         |         |         |         |         |         |         |         |         |        |        |
|--------|------------|---------|---------|---------|---------|---------|---------|---------|---------|---------|---------|---------|---------|---------|---------|---------|---------|---------|--------|--------|
|        | 80.5 m     |         | 74.7 m  |         | 69.1 m  |         | 63.3 m  |         | 57.7 m  |         | 51.9 m  |         | 46.3 m  |         | 40.5 m  |         | 34.9 m  |         |        |        |
|        | 4 parts    | 2 parts | 4 parts | 2 parts | 4 parts | 2 parts | 4 parts | 2 parts | 4 parts | 2 parts | 4 parts | 2 parts | 4 parts | 2 parts | 4 parts | 2 parts | 4 parts | 2 parts |        |        |
| [m]    | [kg]       | [kg]    | [kg]    | [kg]    | [kg]    | [kg]    | [kg]    | [kg]    | [kg]    | [kg]    | [kg]    | [kg]    | [kg]    | [kg]    | [kg]    | [kg]    | [kg]    | [kg]    | [kg]   |        |
| 20.0   | 24,000     | 12,000  | 24,000  | 12,000  | 24,000  | 12,000  | 24,000  | 12,000  | 24,000  | 12,000  | 24,000  | 12,000  | 24,000  | 12,000  | 24,000  | 12,000  | 24,000  | 12,000  | 24,000 | 12,000 |
| 21.0   | 24,000     | 12,000  | 24,000  | 12,000  | 24,000  | 12,000  | 24,000  | 12,000  | 24,000  | 12,000  | 24,000  | 12,000  | 24,000  | 12,000  | 24,000  | 12,000  | 24,000  | 12,000  | 24,000 | 12,000 |
| 22.0   | 22,920     | 12,000  | 24,000  | 12,000  | 24,000  | 12,000  | 24,000  | 12,000  | 24,000  | 12,000  | 24,000  | 12,000  | 24,000  | 12,000  | 24,000  | 12,000  | 24,000  | 12,000  | 24,000 | 12,000 |
| 23.0   | 21,780     | 12,000  | 24,000  | 12,000  | 24,000  | 12,000  | 24,000  | 12,000  | 24,000  | 12,000  | 24,000  | 12,000  | 24,000  | 12,000  | 24,000  | 12,000  | 24,000  | 12,000  | 24,000 | 12,000 |
| 24.0   | 20,750     | 12,000  | 23,000  | 12,000  | 24,000  | 12,000  | 24,000  | 12,000  | 24,000  | 12,000  | 24,000  | 12,000  | 24,000  | 12,000  | 24,000  | 12,000  | 24,000  | 12,000  | 24,000 | 12,000 |
| 25.0   | 19,800     | 12,000  | 21,960  | 12,000  | 24,000  | 12,000  | 24,000  | 12,000  | 24,000  | 12,000  | 24,000  | 12,000  | 24,000  | 12,000  | 24,000  | 12,000  | 24,000  | 12,000  | 24,000 | 12,000 |
| 26.0   | 18,930     | 12,000  | 21,010  | 12,000  | 23,410  | 12,000  | 24,000  | 12,000  | 24,000  | 12,000  | 24,000  | 12,000  | 24,000  | 12,000  | 24,000  | 12,000  | 24,000  | 12,000  | 24,000 | 12,000 |
| 27.0   | 18,130     | 12,000  | 20,120  | 12,000  | 22,430  | 12,000  | 24,000  | 12,000  | 24,000  | 12,000  | 24,000  | 12,000  | 24,000  | 12,000  | 24,000  | 12,000  | 24,000  | 12,000  | 24,000 | 12,000 |
| 28.0   | 17,390     | 12,000  | 19,310  | 12,000  | 21,530  | 12,000  | 24,000  | 12,000  | 24,000  | 12,000  | 24,000  | 12,000  | 24,000  | 12,000  | 24,000  | 12,000  | 24,000  | 12,000  | 24,000 | 12,000 |
| 29.0   | 16,700     | 12,000  | 18,550  | 12,000  | 20,690  | 12,000  | 23,940  | 12,000  | 23,940  | 12,000  | 23,940  | 12,000  | 23,940  | 12,000  | 23,950  | 12,000  | 23,950  | 12,000  | 23,950 | 12,000 |
| 30.0   | 16,070     | 12,000  | 17,850  | 12,000  | 19,910  | 12,000  | 23,050  | 12,000  | 23,050  | 12,000  | 23,050  | 12,000  | 23,050  | 12,000  | 23,060  | 12,000  | 23,050  | 12,000  | 23,050 | 12,000 |
| 31.0   | 15,470     | 12,000  | 17,190  | 12,000  | 19,190  | 12,000  | 22,220  | 12,000  | 22,210  | 12,000  | 22,220  | 12,000  | 22,220  | 12,000  | 22,220  | 12,000  | 22,220  | 12,000  | 22,220 | 12,000 |
| 32.0   | 14,910     | 12,000  | 16,580  | 12,000  | 18,510  | 12,000  | 21,440  | 12,000  | 21,440  | 12,000  | 21,440  | 12,000  | 21,440  | 12,000  | 21,450  | 12,000  | 21,440  | 12,000  | 21,440 | 12,000 |
| 33.0   | 14,390     | 12,000  | 16,000  | 12,000  | 17,870  | 12,000  | 20,710  | 12,000  | 20,710  | 12,000  | 20,710  | 12,000  | 20,710  | 12,000  | 20,720  | 12,000  | 20,710  | 12,000  | 20,710 | 12,000 |
| 34.0   | 13,900     | 12,000  | 15,460  | 12,000  | 17,280  | 12,000  | 20,030  | 12,000  | 20,020  | 12,000  | 20,030  | 12,000  | 20,030  | 12,000  | 20,030  | 12,000  | 20,030  | 12,000  | 20,030 | 12,000 |
| 34.9   | 13,480     | 12,000  | 15,010  | 12,000  | 16,770  | 12,000  | 19,450  | 12,000  | 19,440  | 12,000  | 19,450  | 12,000  | 19,450  | 12,000  | 19,450  | 12,000  | 19,450  | 12,000  | 19,450 | 12,000 |
| 35.0   | 13,440     | 12,000  | 14,960  | 12,000  | 16,720  | 12,000  | 19,380  | 12,000  | 19,380  | 12,000  | 19,390  | 12,000  | 19,390  | 12,000  | 19,390  | 12,000  | 19,390  | 12,000  | 19,390 | 12,000 |
| 36.0   | 13,010     | 12,000  | 14,480  | 12,000  | 16,190  | 12,000  | 18,780  | 12,000  | 18,780  | 12,000  | 18,780  | 12,000  | 18,780  | 12,000  | 18,780  | 12,000  | 18,780  | 12,000  | 18,780 | 12,000 |
| 37.0   | 12,600     | 12,000  | 14,030  | 12,000  | 15,690  | 12,000  | 18,210  | 12,000  | 18,200  | 12,000  | 18,210  | 12,000  | 18,210  | 12,000  | 18,210  | 12,000  | 18,210  | 12,000  | 18,210 | 12,000 |
| 38.0   | 12,210     | 12,000  | 13,600  | 12,000  | 15,220  | 12,000  | 17,670  | 12,000  | 17,660  | 12,000  | 17,670  | 12,000  | 17,670  | 12,000  | 17,670  | 12,000  | 17,670  | 12,000  | 17,670 | 12,000 |
| 39.0   | 11,840     | 11,840  | 13,200  | 12,000  | 14,770  | 12,000  | 17,150  | 12,000  | 17,150  | 12,000  | 17,160  | 12,000  | 17,160  | 12,000  | 17,160  | 12,000  | 17,160  | 12,000  | 17,160 | 12,000 |
| 40.0   | 11,490     | 11,490  | 12,810  | 12,000  | 14,350  | 12,000  | 16,670  | 12,000  | 16,670  | 12,000  | 16,670  | 12,000  | 16,670  | 12,000  | 16,670  | 12,000  | 16,670  | 12,000  | 16,670 | 12,000 |
| 40.5   | 11,330     | 11,330  | 12,630  | 12,000  | 14,140  | 12,000  | 16,440  | 12,000  | 16,430  | 12,000  | 16,440  | 12,000  | 16,440  | 12,000  | 16,440  | 12,000  | 16,440  | 12,000  | 16,440 | 12,000 |
| 41.0   | 11,160     | 11,160  | 12,450  | 12,000  | 13,940  | 12,000  | 16,210  | 12,000  | 16,210  | 12,000  | 16,210  | 12,000  | 16,210  | 12,000  | 16,210  | 12,000  | 16,210  | 12,000  | 16,210 | 12,000 |
| 42.0   | 10,850     | 10,850  | 12,110  | 12,000  | 13,560  | 12,000  | 15,770  | 12,000  | 15,770  | 12,000  | 15,770  | 12,000  | 15,770  | 12,000  | 15,770  | 12,000  | 15,770  | 12,000  | 15,770 | 12,000 |
| 43.0   | 10,550     | 10,550  | 11,780  | 11,780  | 13,200  | 12,000  | 15,350  | 12,000  | 15,350  | 12,000  | 15,350  | 12,000  | 15,350  | 12,000  | 15,350  | 12,000  | 15,350  | 12,000  | 15,350 | 12,000 |
| 44.0   | 10,270     | 10,270  | 11,460  | 11,460  | 12,850  | 12,000  | 14,960  | 12,000  | 14,950  | 12,000  | 14,960  | 12,000  | 14,960  | 12,000  | 14,960  | 12,000  | 14,960  | 12,000  | 14,960 | 12,000 |
| 45.0   | 9,990      | 9,990   | 11,160  | 11,160  | 12,520  | 12,000  | 14,580  | 12,000  | 14,570  | 12,000  | 14,580  | 12,000  | 14,580  | 12,000  | 14,580  | 12,000  | 14,580  | 12,000  | 14,580 | 12,000 |
| 46.0   | 9,740      | 9,740   | 10,880  | 10,880  | 12,200  | 12,000  | 14,210  | 12,000  | 14,210  | 12,000  | 14,220  | 12,000  | 14,220  | 12,000  | 14,220  | 12,000  | 14,220  | 12,000  | 14,220 | 12,000 |
| 46.3   | 9,660      | 9,660   | 10,790  | 10,790  | 12,110  | 12,000  | 14,110  | 12,000  | 14,110  | 12,000  | 14,110  | 12,000  | 14,110  | 12,000  | 14,110  | 12,000  | 14,110  | 12,000  | 14,110 | 12,000 |
| 47.0   | 9,490      | 9,490   | 10,600  | 10,600  | 11,900  | 11,900  | 13,870  | 12,000  | 13,870  | 12,000  | 13,870  | 12,000  | 13,870  | 12,000  |         |         |         |         |        |        |
| 48.0   | 9,250      | 9,250   | 10,340  | 10,340  | 11,610  | 11,610  | 13,540  | 12,000  | 13,530  | 12,000  | 13,540  | 12,000  | 13,540  | 12,000  |         |         |         |         |        |        |
| 49.0   | 9,020      | 9,020   | 10,090  | 10,090  | 11,330  | 11,330  | 13,220  | 12,000  | 13,220  | 12,000  | 13,220  | 12,000  | 13,220  | 12,000  |         |         |         |         |        |        |
| 50.0   | 8,800      | 8,800   | 9,850   | 9,850   | 11,070  | 11,070  | 12,910  | 12,000  | 12,910  | 12,000  | 12,910  | 12,000  | 12,910  | 12,000  |         |         |         |         |        |        |
| 51.0   | 8,590      | 8,590   | 9,620   | 9,620   | 10,810  | 10,810  | 12,620  | 12,000  | 12,620  | 12,000  | 12,620  | 12,000  | 12,620  | 12,000  |         |         |         |         |        |        |
| 51.9   | 8,410      | 8,410   | 9,420   | 9,420   | 10,590  | 10,590  | 12,370  | 12,000  | 12,370  | 12,000  | 12,370  | 12,000  | 12,370  | 12,000  |         |         |         |         |        |        |
| 52.0   | 8,390      | 8,390   | 9,400   | 9,400   | 10,570  | 10,570  | 12,340  | 12,000  | 12,340  | 12,000  | 12,340  | 12,000  | 12,340  | 12,000  |         |         |         |         |        |        |
| 53.0   | 8,200      | 8,200   | 9,190   | 9,190   | 10,330  | 10,330  | 12,070  | 12,000  | 12,070  | 12,000  | 12,070  | 12,000  | 12,070  | 12,000  |         |         |         |         |        |        |
| 54.0   | 8,010      | 8,010   | 8,980   | 8,980   | 10,110  | 10,110  | 11,810  | 11,810  | 11,810  | 11,810  | 11,810  | 11,810  | 11,810  | 11,810  |         |         |         |         |        |        |
| 55.0   | 7,840      | 7,840   | 8,790   | 8,790   | 9,890   | 9,890   | 11,560  | 11,560  | 11,560  | 11,560  | 11,560  | 11,560  | 11,560  | 11,560  |         |         |         |         |        |        |
| 56.0   | 7,660      | 7,660   | 8,600   | 8,600   | 9,680   | 9,680   | 11,320  | 11,320  | 11,320  | 11,320  | 11,320  | 11,320  | 11,320  | 11,320  |         |         |         |         |        |        |
| 57.0   | 7,500      | 7,500   | 8,410   | 8,410   | 9,480   | 9,480   | 11,090  | 11,090  | 11,090  | 11,090  | 11,090  | 11,090  | 11,090  | 11,090  |         |         |         |         |        |        |
| 57.7   | 7,380      | 7,380   | 8,290   | 8,290   | 9,340   | 9,340   | 10,930  | 10,930  | 10,930  | 10,930  | 10,930  | 10,930  | 10,930  | 10,930  |         |         |         |         |        |        |
| 58.0   | 7,340      | 7,340   | 8,240   | 8,240   | 9,280   | 9,280   | 10,870  | 10,870  | 10,870  | 10,870  |         |         |         |         |         |         |         |         |        |        |
| 59.0   | 7,180      | 7,180   | 8,070   | 8,070   | 9,090   | 9,090   | 10,650  | 10,650  | 10,650  | 10,650  |         |         |         |         |         |         |         |         |        |        |
| 60.0   | 7,030      | 7,030   | 7,900   | 7,900   | 8,910   | 8,910   | 10,440  | 10,440  | 10,440  | 10,440  |         |         |         |         |         |         |         |         |        |        |
| 61.0   | 6,890      | 6,890   | 7,740   | 7,740   | 8,730   | 8,730   | 10,240  | 10,240  | 10,240  | 10,240  |         |         |         |         |         |         |         |         |        |        |
| 62.0   | 6,750      | 6,750   | 7,590   | 7,590   | 8,560   | 8,560   | 10,040  | 10,040  | 10,040  | 10,040  |         |         |         |         |         |         |         |         |        |        |
| 63.0   | 6,610      | 6,610   | 7,440   | 7,440   | 8,400   | 8,400   | 9,860   | 9,860   | 9,860   | 9,860   |         |         |         |         |         |         |         |         |        |        |
| 63.3   | 6,570      | 6,570   | 7,400   | 7,400   | 8,350   | 8,350   | 9,800   | 9,800   | 9,800   | 9,800   |         |         |         |         |         |         |         |         |        |        |
| 64.0   | 6,480      | 6,480   | 7,300   | 7,300   | 8,240   | 8,240   | 9,700   | 9,700   | 9,700   | 9,700   |         |         |         |         |         |         |         |         |        |        |
| 65.0   | 6,350      | 6,350   | 7,160   | 7,160   | 8,090   | 8,090   | 9,550   | 9,550   | 9,550   | 9,550   |         |         |         |         |         |         |         |         |        |        |
| 66.0   | 6,230      | 6,230   | 7,020   | 7,020   | 7,940   | 7,940   | 9,400   | 9,400   | 9,400   | 9,400   |         |         |         |         |         |         |         |         |        |        |
| 67.0   | 6,110      | 6,110   | 6,890   | 6,890   | 7,790   | 7,790   | 9,250   | 9,250   | 9,250   | 9,250   |         |         |         |         |         |         |         |         |        |        |
| 68.0   | 6,000      | 6,000   | 6,760   | 6,760   | 7,650   | 7,650   | 9,100   | 9,100   | 9,100   | 9,100   |         |         |         |         |         |         |         |         |        |        |
| 69.0   | 5,890      | 5,890   | 6,640   | 6,640   | 7,510   | 7,510   | 8,950   | 8,950   | 8,950   | 8,950   |         |         |         |         |         |         |         |         |        |        |
| 69.1   | 5,870      | 5,870   | 6,630   | 6,630   | 7,500   | 7,500   | 8,940   | 8,940   | 8,940   | 8,940   |         |         |         |         |         |         |         |         |        |        |
| 70.0   | 5,780      | 5,780   | 6,520   | 6,520   | 7,400   | 7,400   | 8,800   | 8,800   | 8,800   | 8,800   |         | </      |         |         |         |         |         |         |        |        |

|  |   |  |  |   |   |
|--|---|--|--|---|---|
| <b>HOIST WINCH</b><br><br><b>MOTOR</b><br>85 kW  | <b>2-PARTS</b><br><br> |  | <b>4-PARTS</b><br><br>   |   |   |
|  |                        | Load<br><br>0 - 1.2 t<br>1.2 - 5.0 t<br>5.0 - 12.0 t | Max. Speed<br><br>136 m/min<br>74 m/min<br>34 m/min  | Load<br><br>0 - 2.4 t<br>2.4 - 10.0 t<br>10.0 - 24.0 t                | Max. Speed<br><br>68 m/min<br>37 m/min<br>17 m/min                            |
|   | <b>HOIST DRUM</b>   |  |   | <b>HOIST WIRE</b>   |   |
|  | <b>CAPACITY</b><br><br>550 m / 6 Layers   |  |  | <b>Diameter</b><br><br>20 mm  | <b>Safety Factor</b><br><br>5   |
|    | <b>TROLLEY WINCH</b><br><br><b>MOTOR</b><br>16 kW   |  |    | <b>TROLLEY DRUM</b><br><br><b>CAPACITY</b><br>75 m / 1 Layer          |   |
|  | <b>TROLLEY SPEEDS</b>   |  |  | <b>TROLLEY WIRE</b>   |   |
|   | 0 - 24 t  | 0 - 70 m/min   | <b>Diameter</b><br><br>10 mm   | <b>Safety Factor</b><br><br>6   | <b>MBL</b><br><br>87 kN   |
|   | <b>SLEW DRIVE</b><br><br><b>Motor</b><br>3 x 10 kW  |  |   | <b>POWER</b><br><br><b>SUPPLY</b><br>400 - 480 V, 50/60 Hz            |   |
|  | <b>SLEW SPEEDS</b>  |  |  | <b>Consumption</b><br><br>150 kVA                                     | <b>Main Fuse</b><br><br>160 A   |
|   | 0 - 24 t  | 0 - 0.6 rpm  |  |   |   |
|   | <b>UNDERCARRIAGE</b><br><br><b>Motor</b><br>4 x 7 kW  |  |    | <b>SUPPLY CABLE</b>   |   |
|  | <b>TRAVEL SPEEDS</b>  |  |  | <b>Cable Length</b><br><br><b>0 - 175 m</b><br><br><b>175 - 250 m</b> | <b>Cable Type</b><br><br>4 x 70 mm <sup>2</sup><br><br>4 x 95 mm <sup>2</sup> |
|   | 0 - 24 t  | 0 - 25 m/min   |  |   |   |
| All motion controls are completely stepless ensuring smooth and jerk-free operation. Creeping speed down to 0.5% of maximum speed. |   |  | All specifications shown in the tables are for the standard version of K630F. For special requirements regarding load charts or drive speeds, please contact Krøll Cranes A/S. |   |   |



## KRØLL CRANES



KRØLL CRANES A/S  
Nordkranvej 2  
DK-3540 Lyngø  
Denmark

Tel: +45 48 18 74 00  
Mail: [info@krollcranes.dk](mailto:info@krollcranes.dk)  
Web: [www.krollcranes.dk](http://www.krollcranes.dk)

